





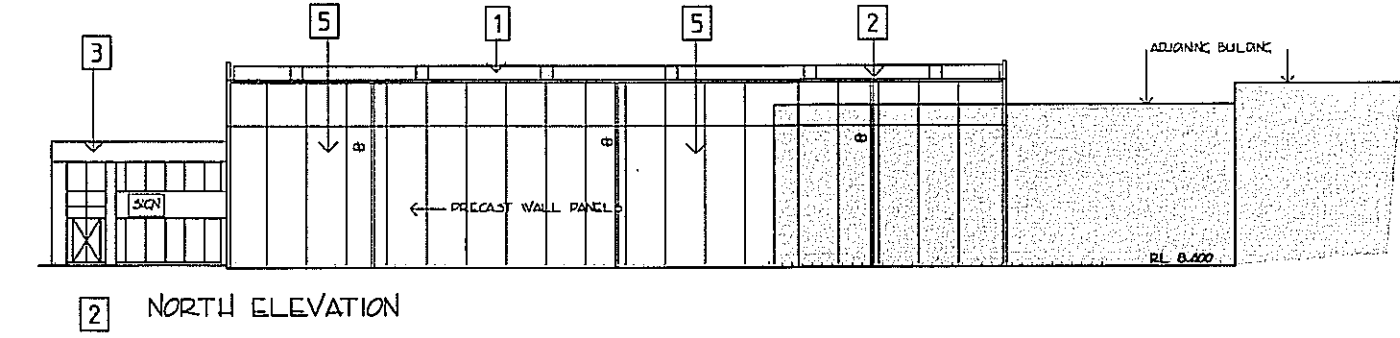
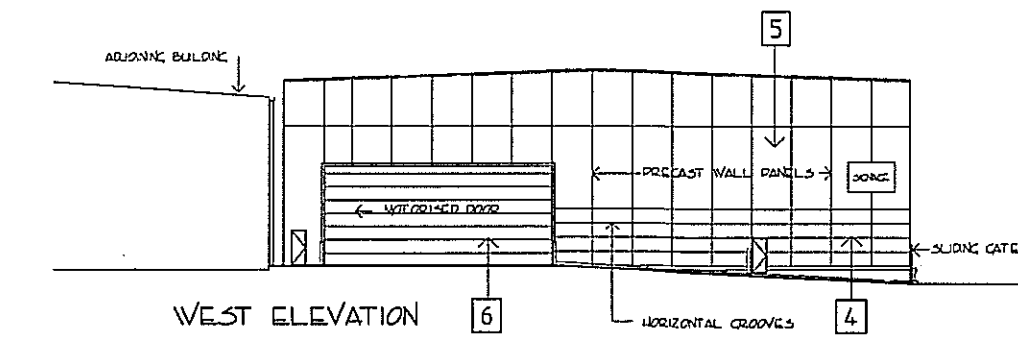
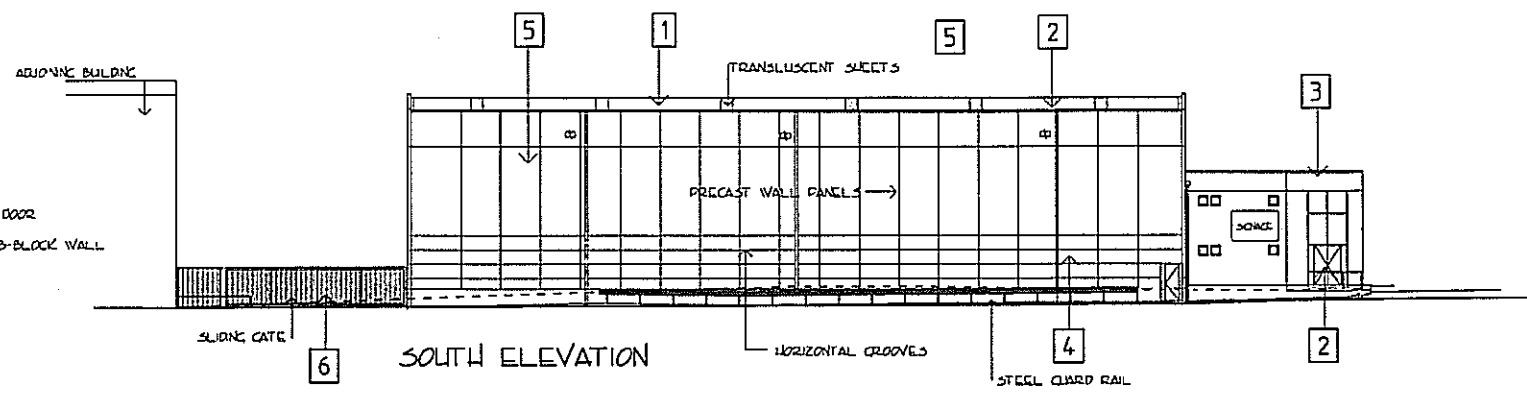
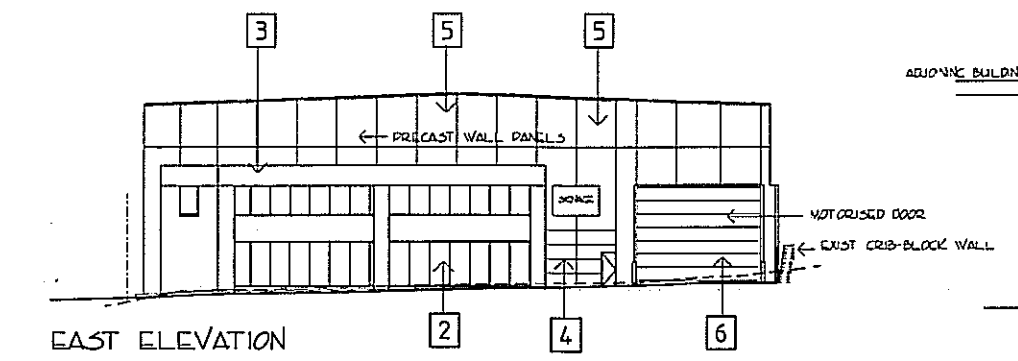


WARWICKSHIRE COUNTY COUNCIL  
 THIS PLAN TO BE READ  
 IN CONJUNCTION WITH  
 DEFERRED COMMENCEMENT  
 CONSENT NUMBER DA009/0392  
 (Approval of consent must  
 be obtained via written notice  
 from Warwick Council)

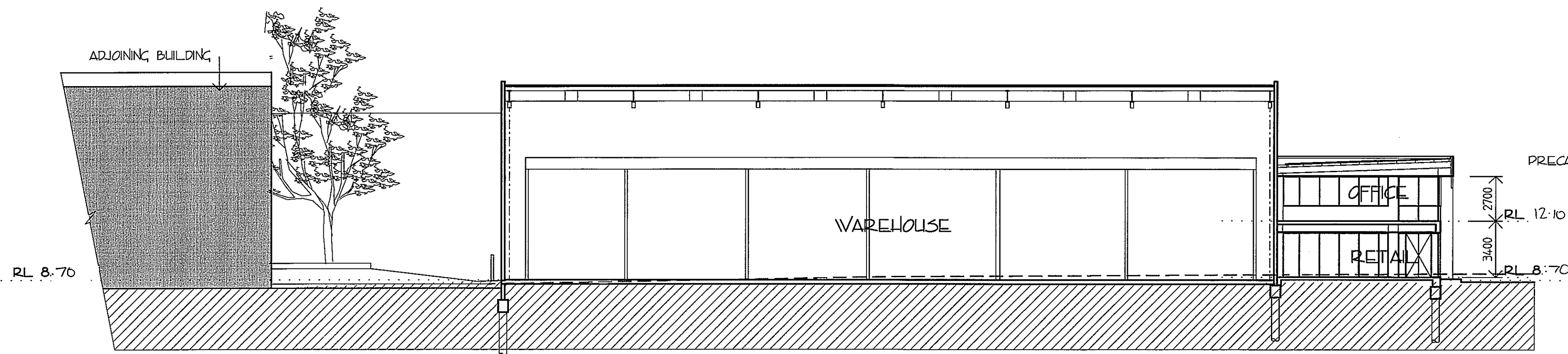
- 1  ROOF- Colorband "Paperbark" Lysaght Klip-lak
- 2  WINDOWS, GUTTERS & DOWNPIPES- Dulux Powdercoat "Berry Grey" 88362
- 3  OFFICE- Fascia, Spandrels, columns & wall  
Dulux "Conservatory Blue" 308G08/086
- 4  WAREHOUSE- Precast Panels of grooved section  
Dulux "Conservatory Blue" 308G08/086
- 5  WAREHOUSE- Precast Panels of above grooved section  
Dulux "Yorkshire Teal" 90G3 18/16
- 6  ROLLER SHUTTERS, BOLLARDS & GATE  
Dulux Powdercoat "Teal" 5651 Gloss



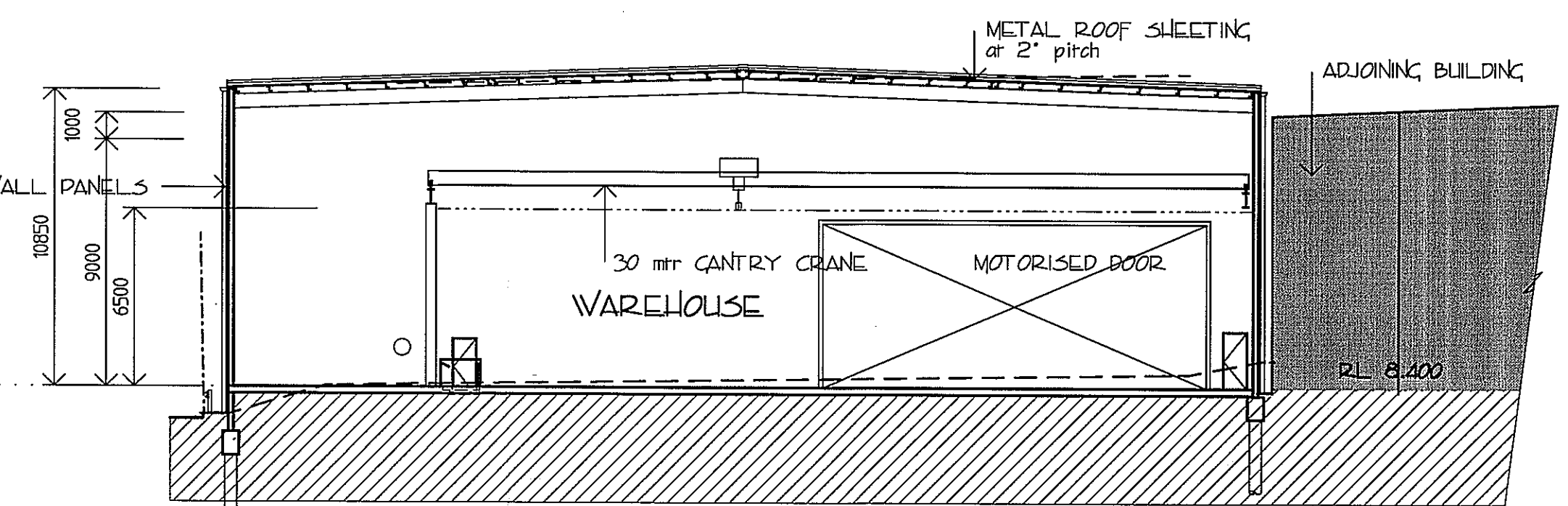
LOT 19, UNIT 2, 9 13 WINBOURNE ROAD, BROOKVALE  
 PROPOSED INDUSTRIAL DEVELOPMENT  
 AUST-EQUITY PROPERTIES  
 WOLSH, LYENHO & BREKHOFF - ARCHITECTS  
 January 2004

EXTERNAL  
 FINISHES

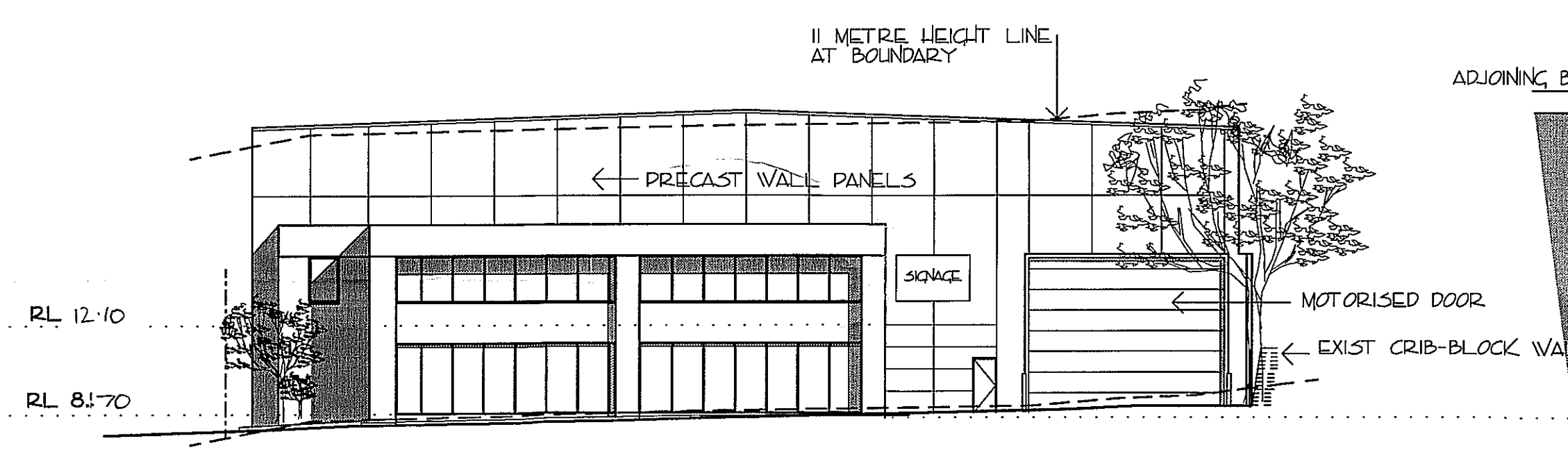
DA05  
 2904  
 date 10.01.04



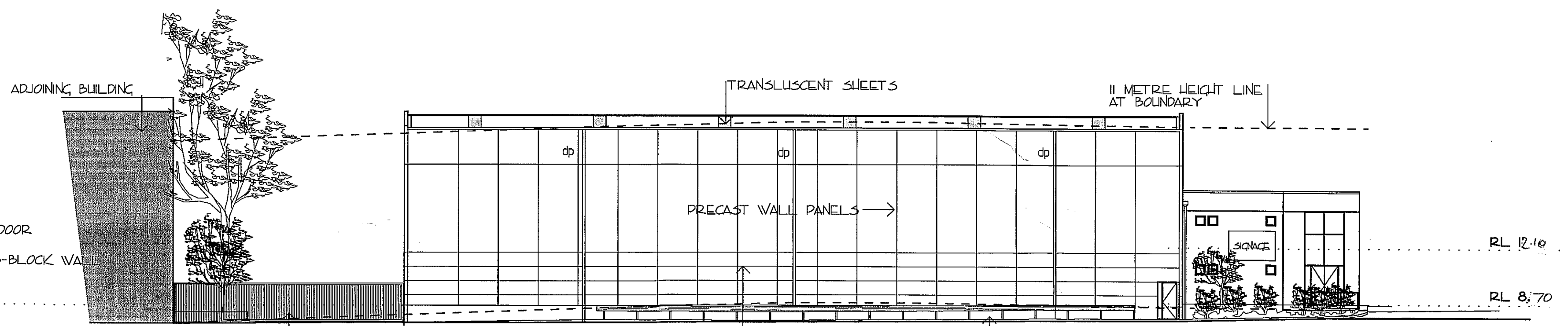
SECTION A-A



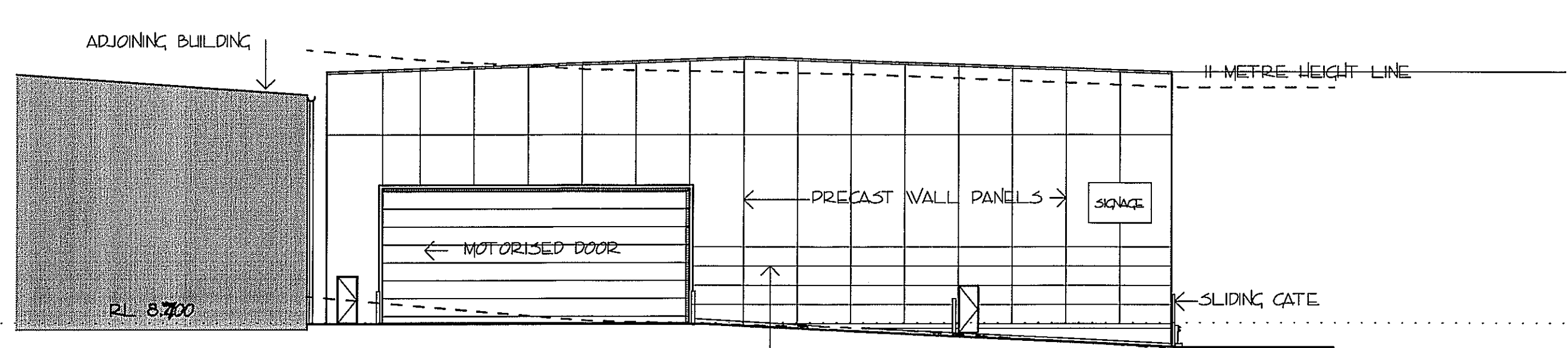
SECTION B-B



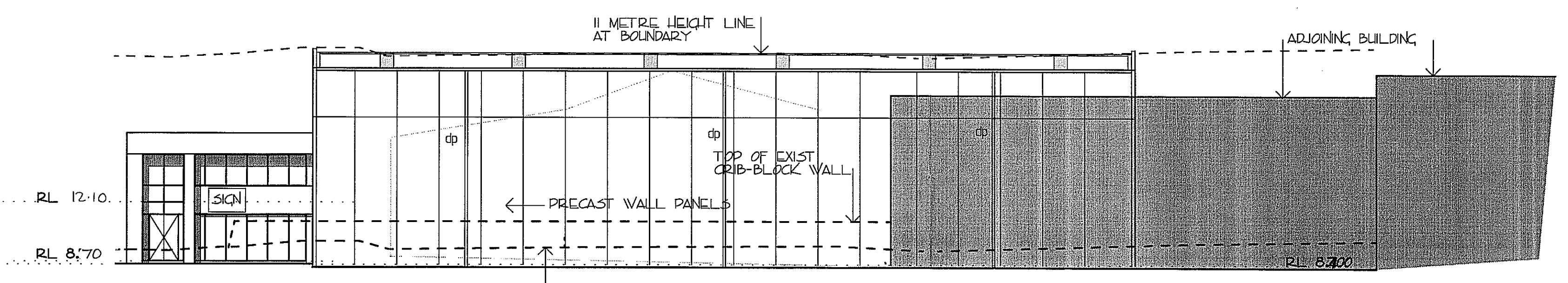
EAST ELEVATION



SOUTH ELEVATION



WEST ELEVATION



NORTH ELEVATION

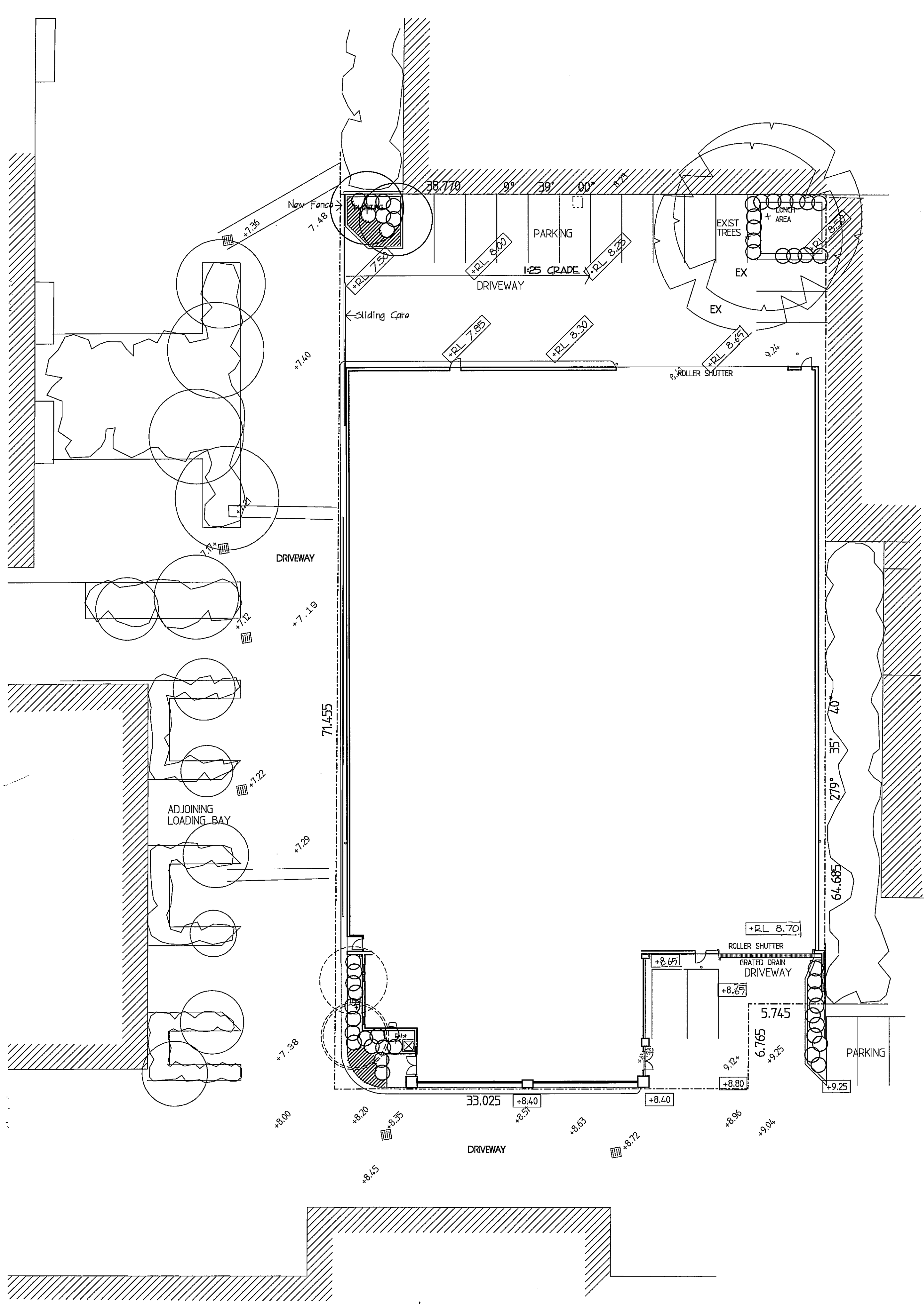
WARNING NOTICE  
 THIS PLAN TO BE READ  
 IN CONNECTION WITH  
 DEFINED COMMENCEMENT  
 CONSENT  
 D200910392  
 (Application of consent must  
 be obtained in written notice  
 from Environment Canada)

LOT 19, UNIT 2, 9 13 WINBOURNE ROAD, BROOKVALE  
 PROPOSED INDUSTRIAL DEVELOPMENT

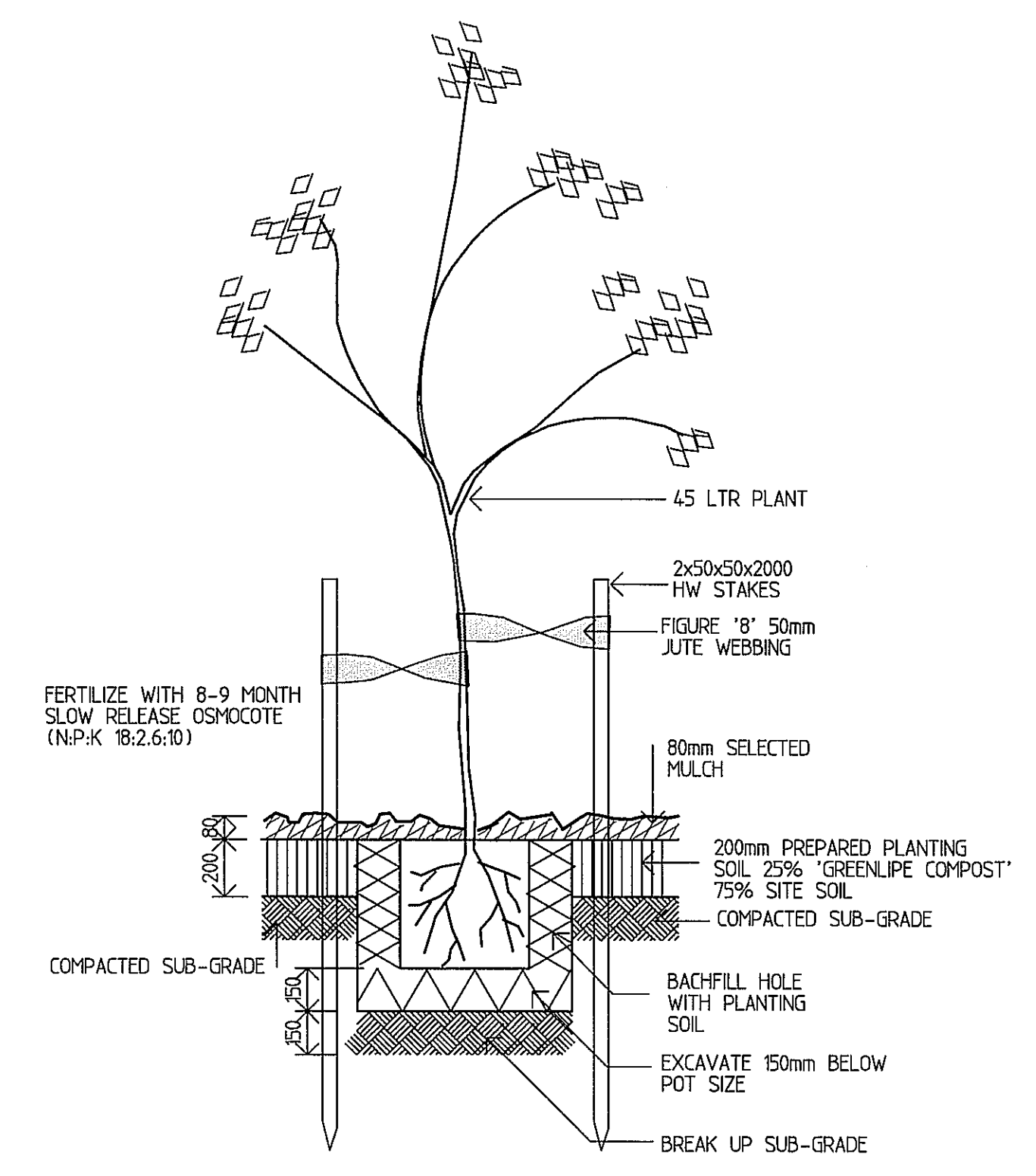
AUST-EQUITY PROPERTIES  
 WOLSKI, LYCENKO & BRECKNOCK - ARCHITECTS  
 february 2009

ELEVATIONS  
 & SECTIONS

DA02  
 2904  
 date 3.04.09



GROUND FLOOR  
SCALE 1:200



TYPICAL PLANTING DETAIL

PLANTING LEGEND

	BOTANICAL/COMMON NAME	POT SIZE	MATURE HEIGHT	NUMBER REQ'D
INDIGENOUS TREES	MELALEUCA STYYPHELOIDES (Prickly Leaved Paperbark)	25 LTR	TO 10 MTRS	2
TALL NATIVE SCREEN TREE / SHRUB	ACHENA SMITHII MINOR (Dwarf Lillypilly)	200 mm	TO 5 MTRS	48
LOCAL NATIVE GROUND COVER	GREVILLEA OBTUSIFOLIA OR SIMILAR	150 mm		30

- EXISTING TREE TO BE REMOVED  
 - EXISTING TREE TO BE RETAINED  
 - EXISTING LANDSCAPING ON ADJOINING PROPERTIES

THIS PLAN IS A PRELIMINARY DESIGN. THIS PLAN TO BE READ IN CONJUNCTION WITH DETAILED CONSTRUCTION DOCUMENTS. CONSENT NUMBER: DA002910397. (Additional information may be supplied on request upon written notice from the Council.)

LOT 19, UNIT 2, 9 13 WINBOURNE ROAD, BROOKVALE  
PROPOSED INDUSTRIAL DEVELOPMENT

AUST-EQUITY PROPERTIES  
WOLSKI, LYCENKO & BRECKNOCK - ARCHITECTS  
february 2009

LANDSCAPE PLAN

DA03  
2904 date26.03.09

