

**THIS PLAN IS TO BE READ IN CONJUNCTION WITH THE CONDITIONS OF DEVELOPMENT CONSENT**

**DA2021/0001**



PITTWATER RD



MAIN STREET:	PARK ST
CROSS ST:	PITTWATER RD
OUTSIDE/OPP:	MONA VALE HALL
SUBURB:	MONA VALE
KNOWN AS:	PITTWATER PARK



ISSUE	DESCRIPTION	DATE	DRAWN
A	DRAFT FOR REVIEW	3/12/20	JC
B	DA ISSUE	4/12/20	AG

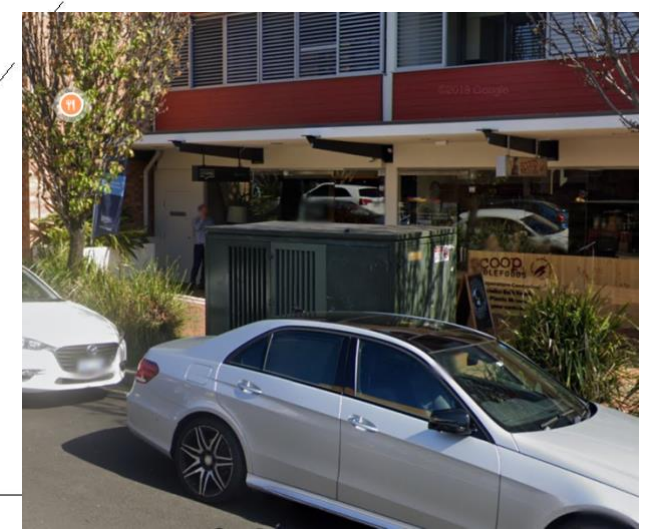
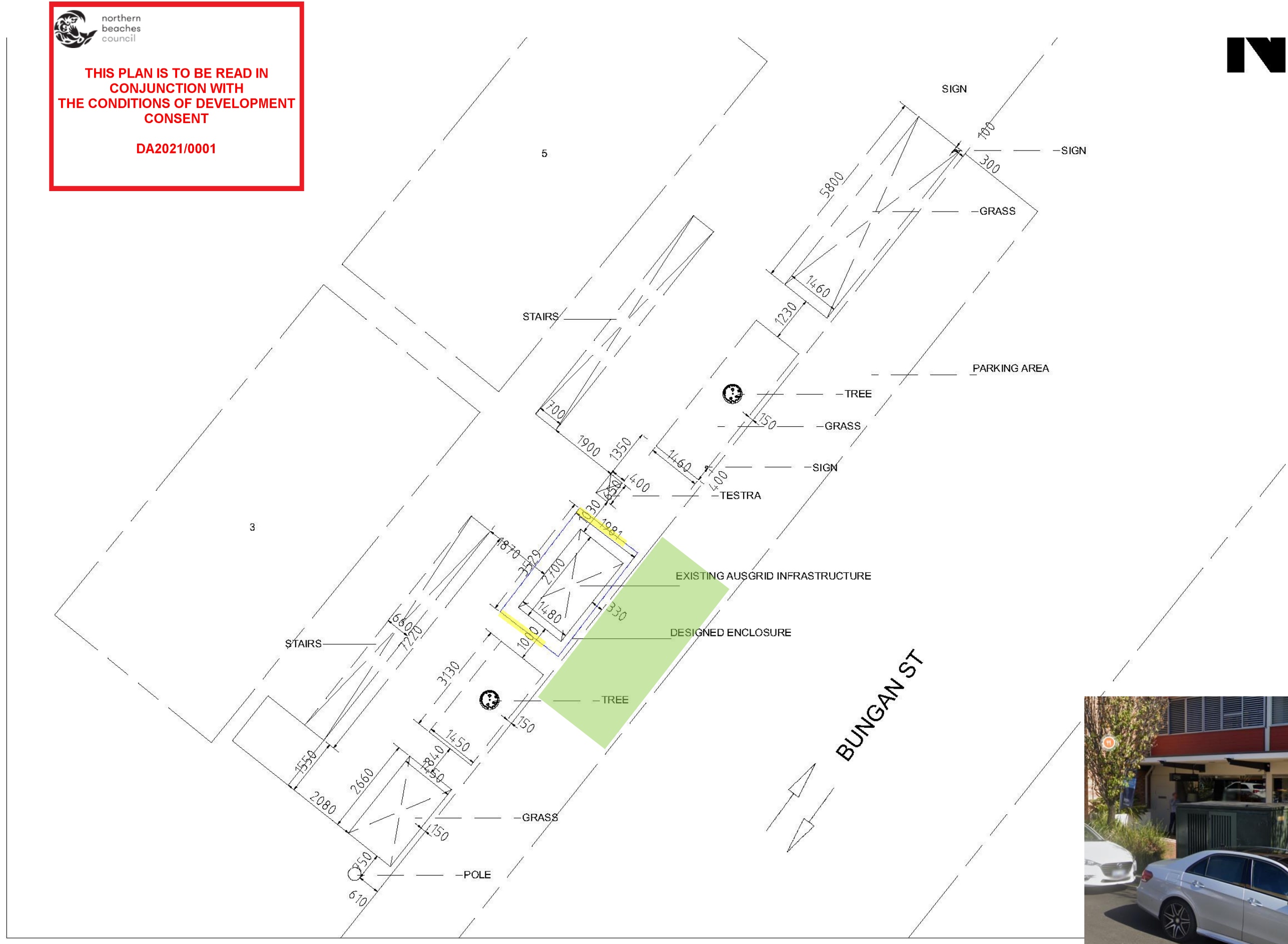
THIS DRAWING IS THE PROPERTY OF JOLT CHARGE AND SHALL NOT BE COPIED IN PART OR IN WHOLE WITHOUT AUTHORISATION

**JOLT CHARGE PTY LTD**  
LEVEL 24, 3000 BARANGAROO AVE, SYDNEY NSW2000

NORTHERN BEACHES COUNCIL			
PARK ST, MONA VALE			
DATE	SCALE	SITE NO.	REVISION
4/12/20	1:75	16388	B

**THIS PLAN IS TO BE READ IN  
CONJUNCTION WITH  
THE CONDITIONS OF DEVELOPMENT  
CONSENT**

**DA2021/0001**



<b>MAIN STREET:</b>	BUNGAN ST
<b>CROSS ST:</b>	PITTWATER RD
<b>OUTSIDE/OPP:</b>	7 BUNGAN ST
<b>SUBURB:</b>	MONA VALE
<b>KNOWN AS:</b>	BUNGAN PITTWATER



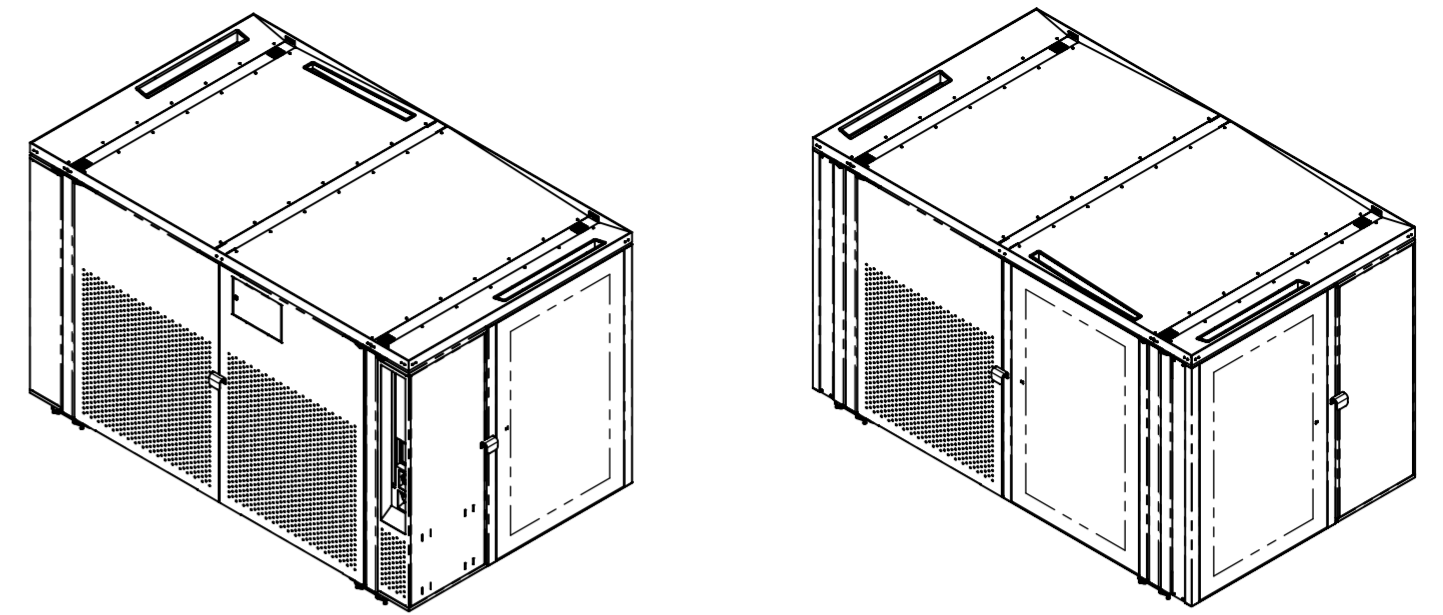
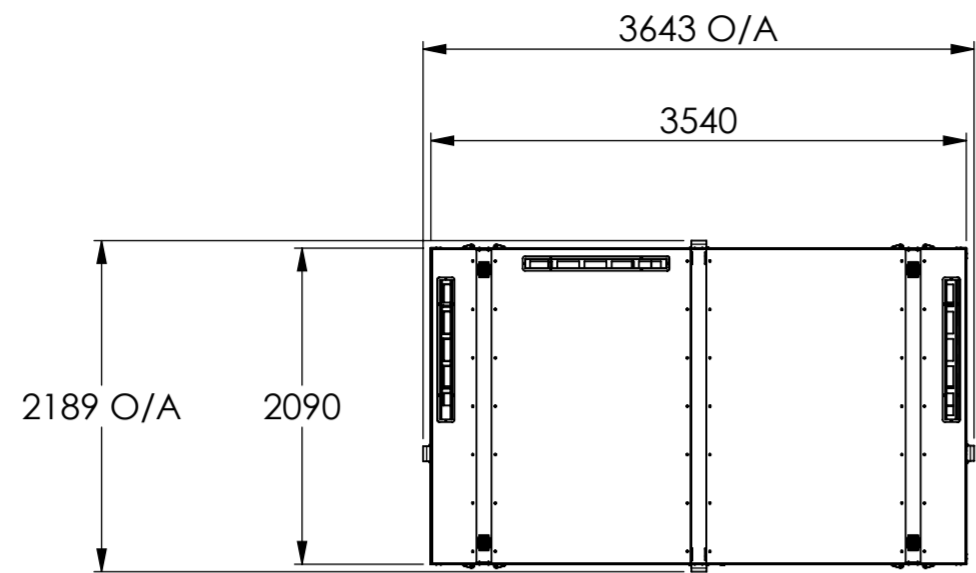
ISSUE	DESCRIPTION	DATE	DRAWN
A	DRAFT FOR REVIEW	3/12/20	JC
B	DA ISSUE	4/12/20	AG

THIS DRAWING IS THE PROPERTY OF JOLT CHARGE AND SHALL NOT BE COPIED IN PART OR IN WHOLE WITHOUT AUTHORISATION

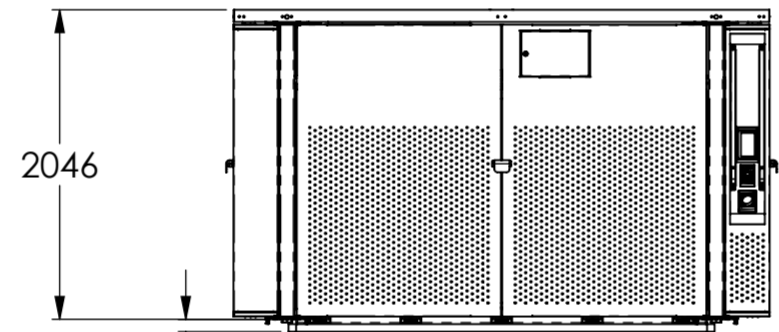
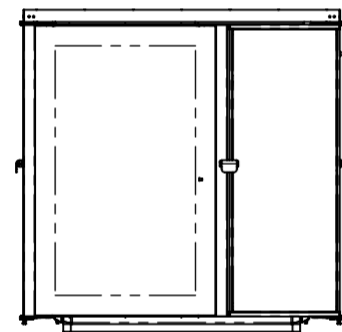
**JOLT CHARGE PTY LTD**  
LEVEL 24, 300 BARANGAROO AVE, SYDNEY NSW2000

NORTHERN BEACHES COUNCIL			
BUNGAN ST, MONA VALE			
DATE	SCALE	SITE NO.	REVISION
4/12/20	1:75	16460	B

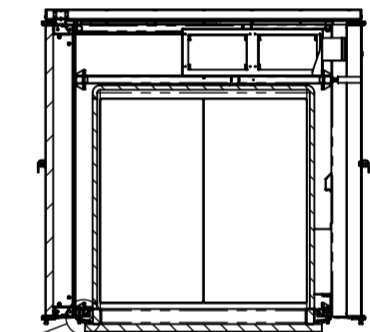
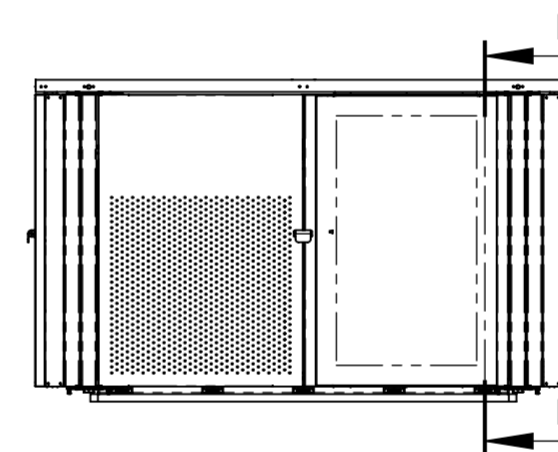
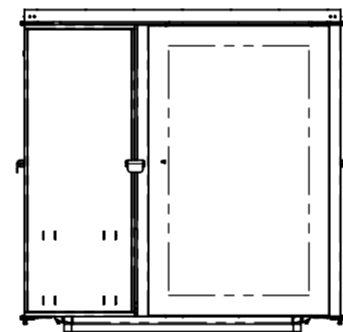

  
**THIS PLAN IS TO BE READ IN CONJUNCTION WITH THE CONDITIONS OF DEVELOPMENT CONSENT**
  
**DA2021/0001**



ISOMETRIC VIEWS (NTS)



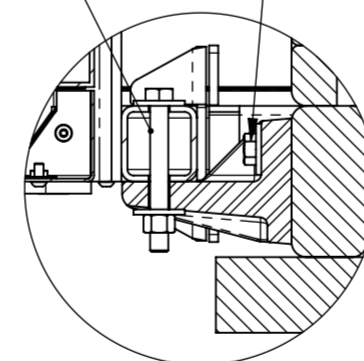
82 GROUND CLEARANCE



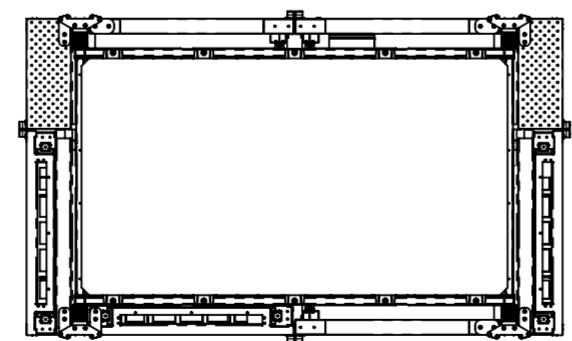
SECTION D-D

BOLT BRACKET TO STRUCTURAL FRAME

M12 BLIND BOLT BRACKETS TO TRANSFORMER



DETAIL E  
SCALE 1 : 5



**NOTES:**

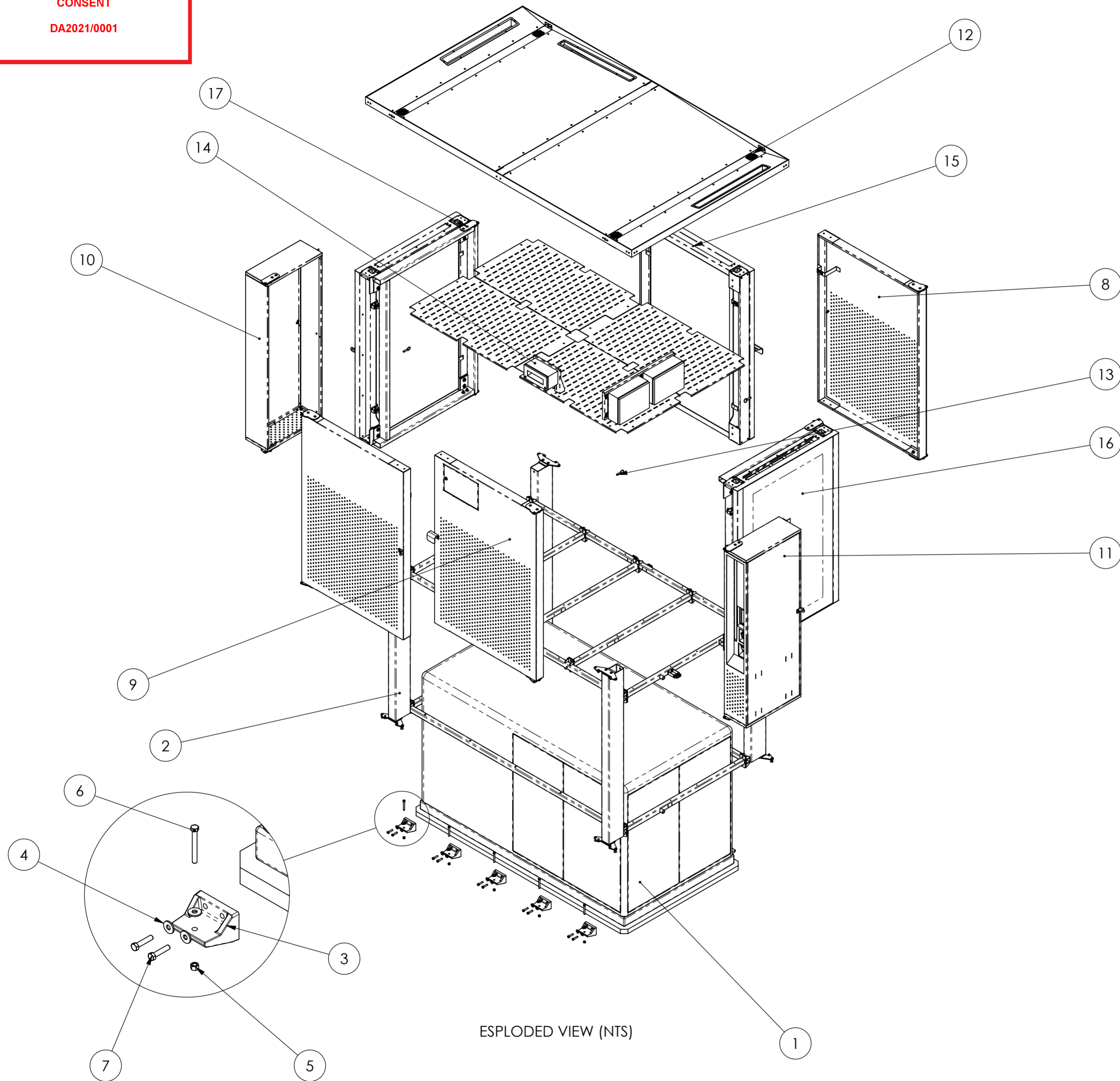
- FUNCTIONAL DIMENSIONS SHOWN ONLY. REFER TO 3D CAD FILE FOR ALL OTHER DIMENSIONS &/ OR DRAFT
- 'L.P.' INDICATES ONE OR BOTH POINTS OF DIMENSION TAKEN AT THEORETICAL INTERSECTION POINT OF 2 LINES
- 'O/A' INDICATES OVERALL DIMENSION
- ALL DIMENSIONS IN mm
- TOLERANCE UNLESS SPECIFIED OTHERWISE:  
LINEAR ±0.1  
ANGULAR ±0.5
- PARTS TO BE FREE FROM SCRATCHES & DAMAGE
- ALL SURFACES TO BE SMOOTH, CLEAN & FREE OF ANY IMPERFECTIONS

REV	DESCRIPTION	DRAWN	DATE
A	ORIGINAL ISSUE	MB	01/06/2020

<b>VERT DESIGN</b>			
SUITE 7, 17 THURLOW ST REDFERN 2016 t: 9698 7770 www.vertdesign.com.au			
<b>DO NOT SCALE DRAWING</b>		<b>THIRD ANGLE PROJECTION</b>	
TITLE	JOLT GRILL GENERAL ASSEMBLY	CLIENT	JOLT
MATERIAL	SEE PART DRAWINGS	PROJECT	JOLT-PG
FINISH-COLOUR	SEE PART DRAWINGS	PART No.	JOLT-PG-GA-01
MODEL REVISION	0.1	DRAWING REVISION	A
DRAWN	MB	DATE	11/06/2020
		SHEET	1 OF 3
ASSEMBLY		JOLT-PG-GA-01	SCALE
			1:50
			A2
		ISSUED FOR:	
		<input type="checkbox"/> REFERENCE	
		<input type="checkbox"/> PRODUCTION	
		<input checked="" type="checkbox"/> QUOTATION ONLY	
		<input type="checkbox"/> CLIENT APPROVAL	
		<input type="checkbox"/> PROTOTYPE	
		<input type="checkbox"/> PRELIMINARY TOOLING	


  
**THIS PLAN IS TO BE READ IN CONJUNCTION WITH THE CONDITIONS OF DEVELOPMENT CONSENT**
  
 DA2021/0001




EXPLODED VIEW (NTS)

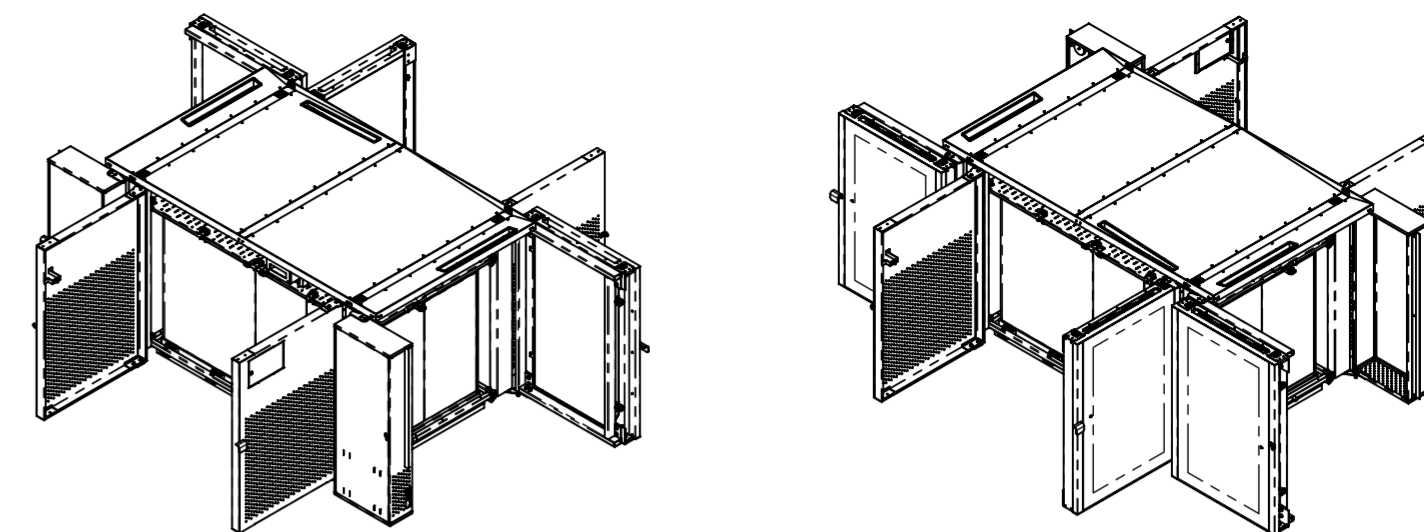
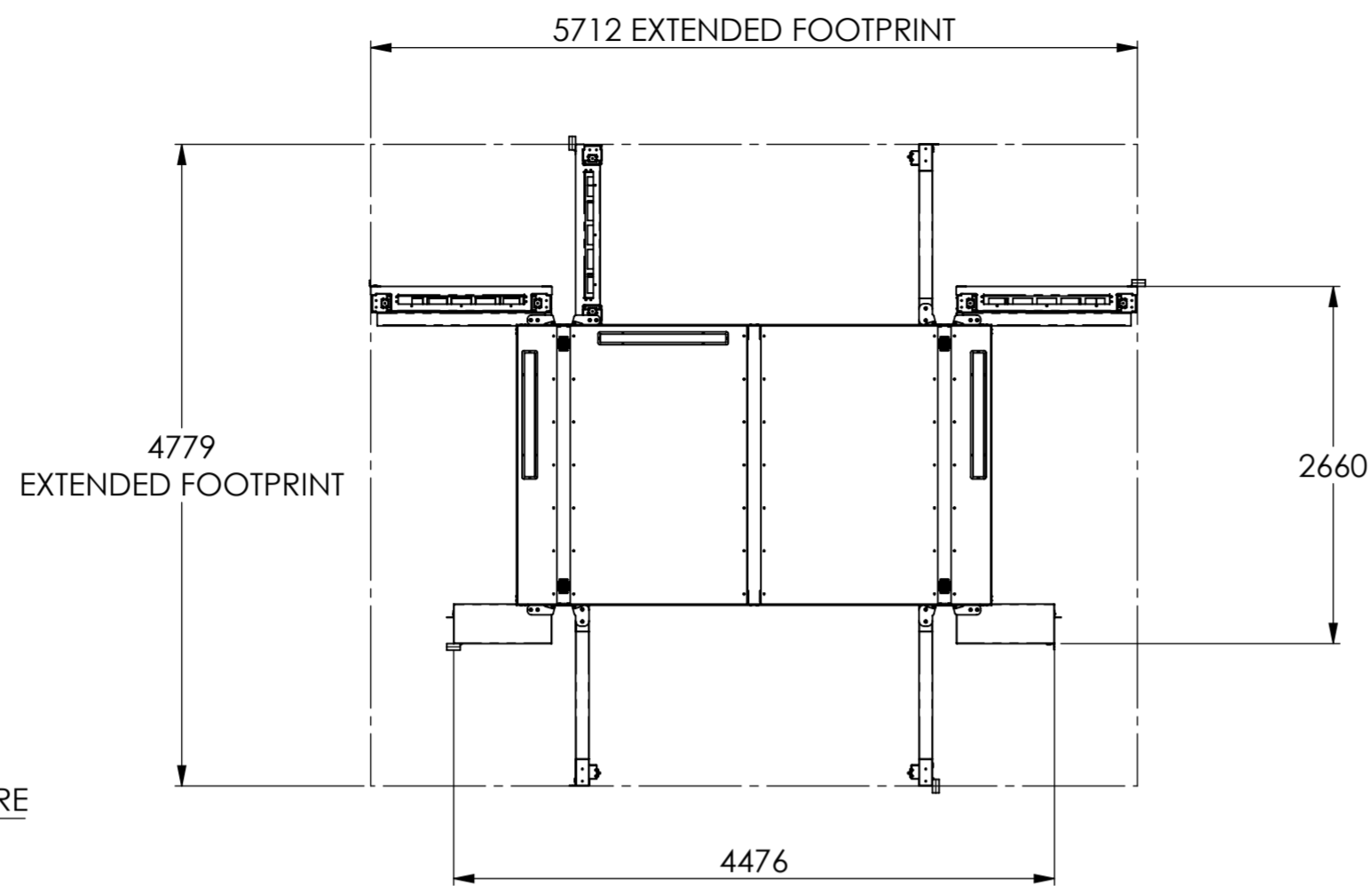
ITEM NO.	PART NUMBER	DESCRIPTION	Default/ QTY.
1	transfer cabinet	AUSGRID KIOSK	1
2	jolt-pg-st_a01_revA	STRUCTURE SUB-ASSEMBLY	1
3	jolt_pg_cast bracket_revB	TRANSFORMER MOUNT BRACKET	10
4	B18.22M - Plain washer, 12 mm, regular		40
5	B18.2.4.2M - Hex nut, Style 2, M12 x 1.75 --D-N		10
6	B18.2.3.5M - Hex bolt M12 x 1.75 x 100 --30N		10
7	B18.2.3.5M - Hex bolt M12 x 1.75 x 55 --30N	NOTE: USE BLIND BOLT	20
8	jolt-pg- drb_a01_revA	BLANK DOOR SUB-ASSEMBLY	2
9	jolt-pg- drm_a01_revA	METER DOOR SUB-ASSEMBLY	1
10	jolt-pg- blb_a01_revA	BLANK BAY SUB-ASSEMBLY	1
11	jolt-pg- chb_sub01_revA	CHARGE BAY SUB-ASSEMBLY	1
12	jolt-pg-rf_a01_revA	ROOF SUB-ASSEMBLY	1
13	DRI-34	DETENT PIN	4
14	jolt-pg- EQ_a01_revA	EQUIPMENT SHELF SUB- ASSEMBLY	1
15	jolt-pg-scr_a01_revA	SCREEN SUB-ASSEMBLY	1
16	jolt-pg- scs_a01_revA	SCREEN FRAME SUB-ASSEMBLY	1
17	jolt-pg- scs_a01_revA	SCREEN FRAME SUB-ASSEMBLY (OPPOSITE SIDE)	1

NOTES:

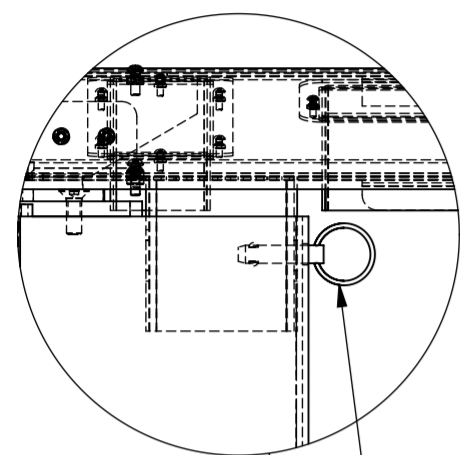
- FUNCTIONAL DIMENSIONS SHOWN ONLY, REFER TO 3D CAD FILE FOR ALL OTHER DIMENSIONS &/ OR DRAFT
- 'I.P.' INDICATES ONE OR BOTH POINTS OF DIMENSION TAKEN AT THEORETICAL INTERSECTION POINT OF 2 LINES
- 'O/A' INDICATES OVERALL DIMENSION
- ALL DIMENSIONS IN mm
- TOLERANCE UNLESS SPECIFIED OTHERWISE:  
 LINEAR ±0.1  
 ANGULAR ±0.5
- PARTS TO BE FREE FROM SCRATCHES & DAMAGE
- ALL SURFACES TO BE SMOOTH, CLEAN & FREE OF ANY IMPERFECTIONS

A		ORIGINAL ISSUE	MB	01/06/2020
REV	DESCRIPTION		DRAWN	DATE
<b>VERT DESIGN</b>				
SUITE 7, 17 THURLOW ST REDFERN 2016 t: 9698 7770 www.vertdesign.com.au				
<b>DO NOT SCALE DRAWING</b>		<b>THIRD ANGLE PROJECTION</b>		<b>ISSUED FOR:</b>
TITLE	JOLT GRILL GENERAL ASSEMBLY	CLIENT	JOLT	<input type="checkbox"/> REFERENCE
MATERIAL	SEE PART DRAWINGS	PROJECT	JOLT-PG	<input type="checkbox"/> PRODUCTION
FINISH-COLOUR	SEE PART DRAWINGS	PART No.	JOLT-PG-GA-01	<input checked="" type="checkbox"/> QUOTATION ONLY
MODEL REVISION	0.1	DRAWING REVISION	A	<input type="checkbox"/> CLIENT APPROVAL
DRAWN	DATE	SHEET	ASSEMBLY	<input type="checkbox"/> PROTOTYPE
MB	11/06/2020	2 OF 3	JOLT-PG-GA-01	<input type="checkbox"/> PRELIMINARY TOOLING
		SCALE	1:30	A2


  
**THIS PLAN IS TO BE READ IN CONJUNCTION WITH THE CONDITIONS OF DEVELOPMENT CONSENT**
  
**DA2021/0001**

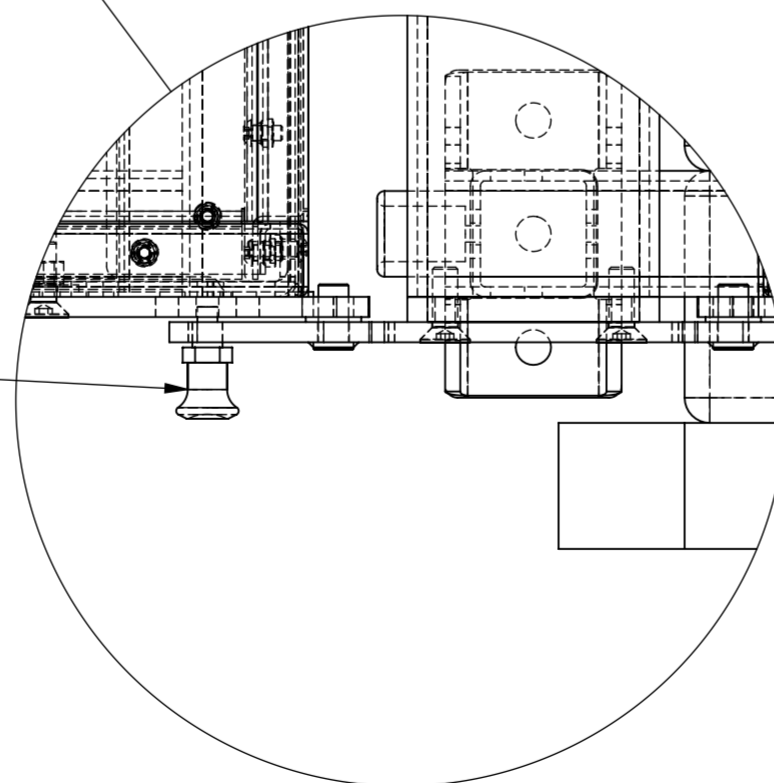
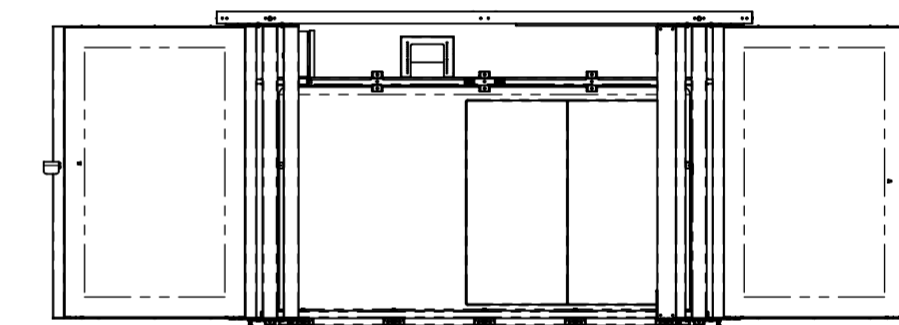
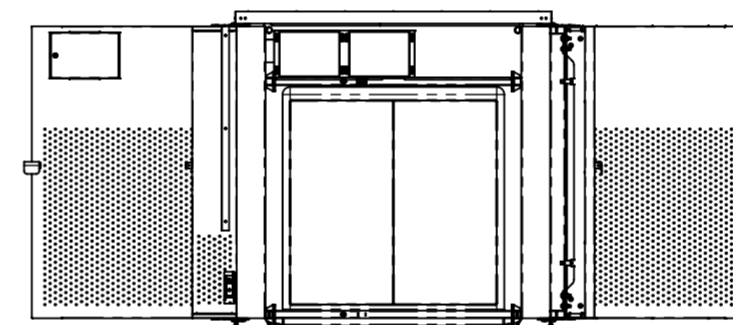
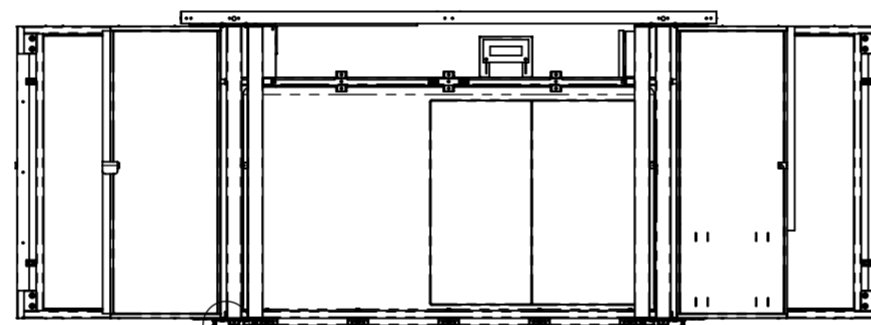
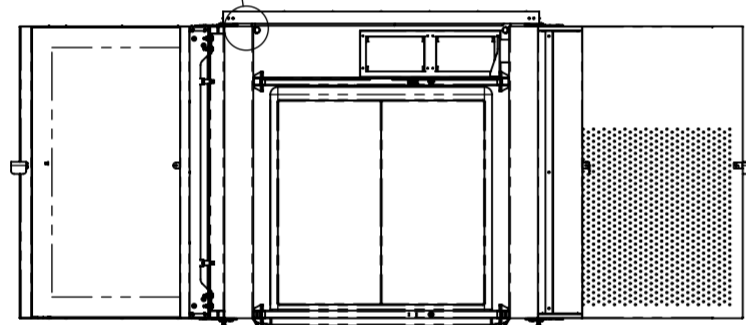


ISOMETRIC VIEW (NTS)



DETAIL G  
SCALE 1 : 5

USE OF DETENT PIN TO SECURE ROOF STRUCTURE



SPRING PLUNGER IS USED TO HOLD DOORS AT 90° SWING RADIUS

DETAIL F  
SCALE 1 : 3

**NOTES:**

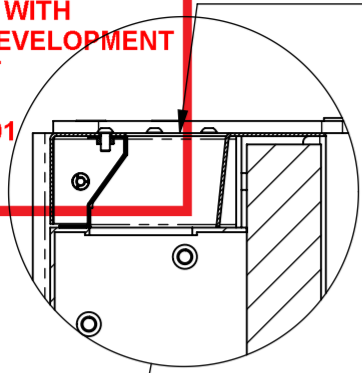
- FUNCTIONAL DIMENSIONS SHOWN ONLY. REFER TO 3D CAD FILE FOR ALL OTHER DIMENSIONS &/ OR DRAFT
- 'L.P.' INDICATES ONE OR BOTH POINTS OF DIMENSION TAKEN AT THEORETICAL INTERSECTION POINT OF 2 LINES
- 'O/A' INDICATES OVERALL DIMENSION
- ALL DIMENSIONS IN mm
- TOLERANCE UNLESS SPECIFIED OTHERWISE:  
LINEAR ±0.1  
ANGULAR ±0.5
- PARTS TO BE FREE FROM SCRATCHES & DAMAGE
- ALL SURFACES TO BE SMOOTH, CLEAN & FREE OF ANY IMPERFECTIONS

A	ORIGINAL ISSUE	MB	01/06/2020
<b>REV</b>	<b>DESCRIPTION</b>	<b>DRAWN</b>	<b>DATE</b>
<p><b>VERT DESIGN</b>          SUITE 7, 17 THURLOW ST REDFERN 2016          t: 9698 7770 www.vertdesign.com.au</p>			
<b>DO NOT SCALE DRAWING</b>		<b>THIRD ANGLE PROJECTION</b>	
TITLE JOLT GRILL GENERAL ASSEMBLY MATERIAL SEE PART DRAWINGS FINISH-COLOUR SEE PART DRAWINGS		CLIENT JOLT PROJECT JOLT-PG PART No. JOLT-PG-GA-01	
MODEL REVISION 0.1	DRAWING REVISION A	ASSEMBLY JOLT-PG-GA-01	SCALE 1:50
DRAWN MB	DATE 11/06/2020	SHEET 3 OF 3	A2
ISSUED FOR:		<input type="checkbox"/> REFERENCE <input type="checkbox"/> PRODUCTION <input checked="" type="checkbox"/> QUOTATION ONLY <input type="checkbox"/> CLIENT APPROVAL <input type="checkbox"/> PROTOTYPE <input type="checkbox"/> PRELIMINARY TOOLING	

northern beaches council

**THIS PLAN IS TO BE READ IN CONJUNCTION WITH THE CONDITIONS OF DEVELOPMENT CONSENT DA2021/0001**

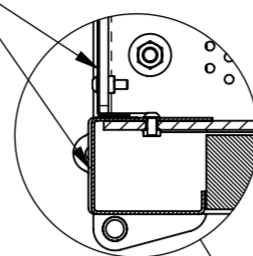
ASSEMBLED DUCTING FOR AIR FLOW



DETAIL D SCALE 1 : 5

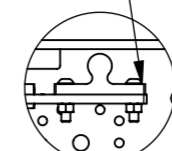


ATTACH COVER PLATE & TRIM PLATE WITH FASTENERS

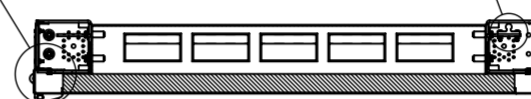


DETAIL G SCALE 1 : 5

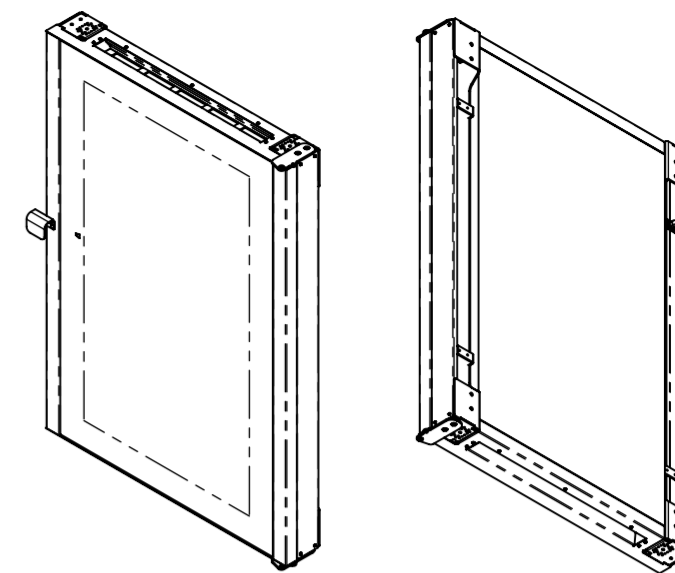
SECURE CATCH PLATE WITH FASTENERS



DETAIL F SCALE 1 : 5

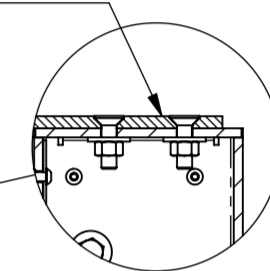


SECTION E-E

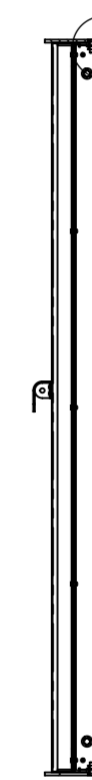


ISOMETRIC VIEWS (NTS)

CONNECT HINGE PLATES WITH NUT & BOLT

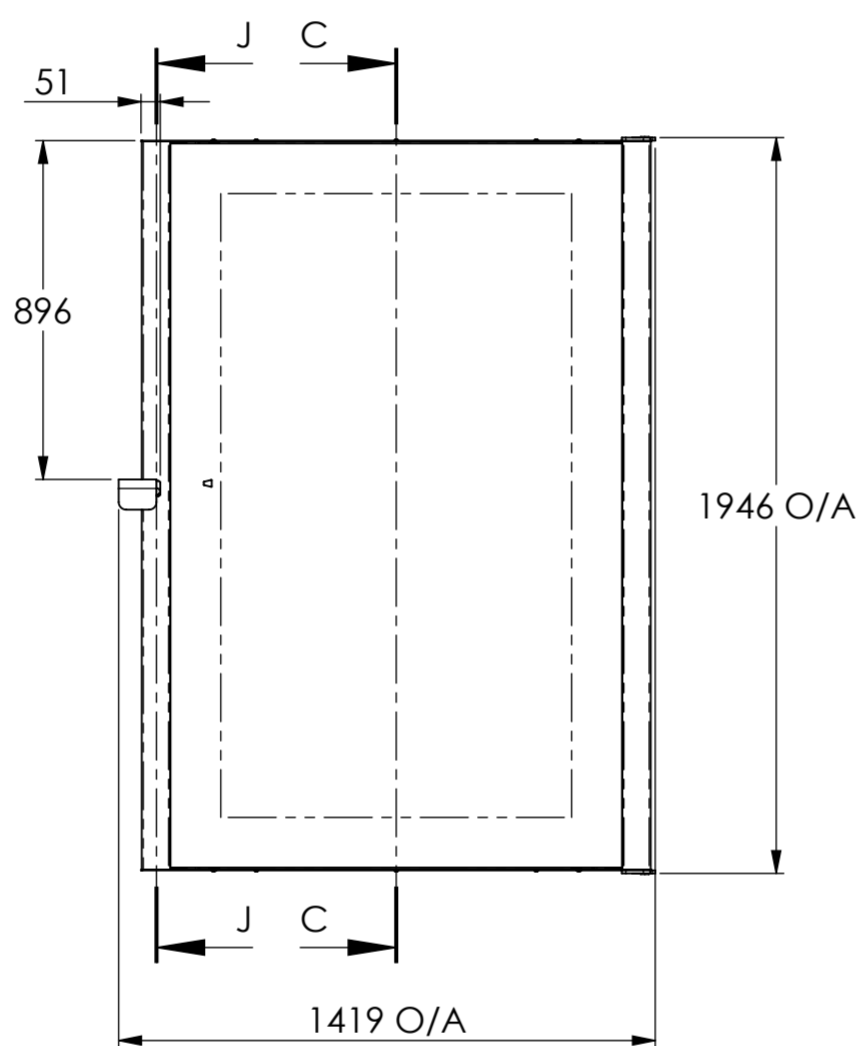


DETAIL I SCALE 1 : 5

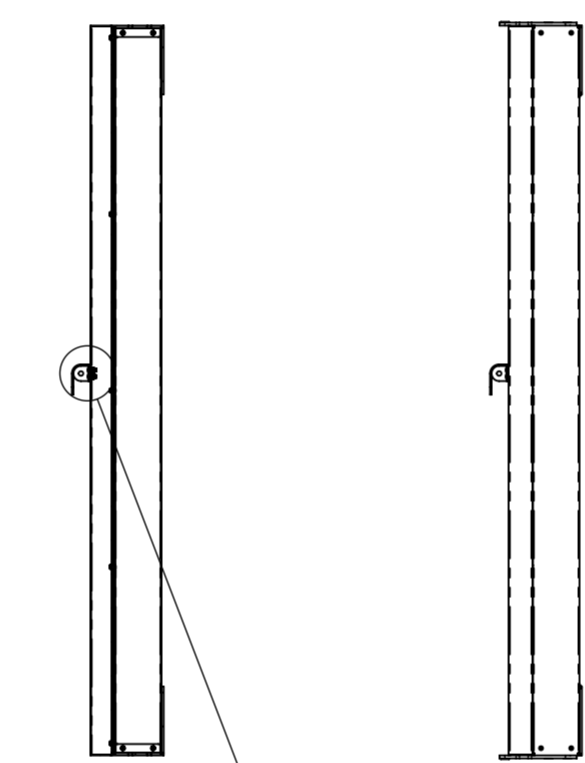


SECTION H-H

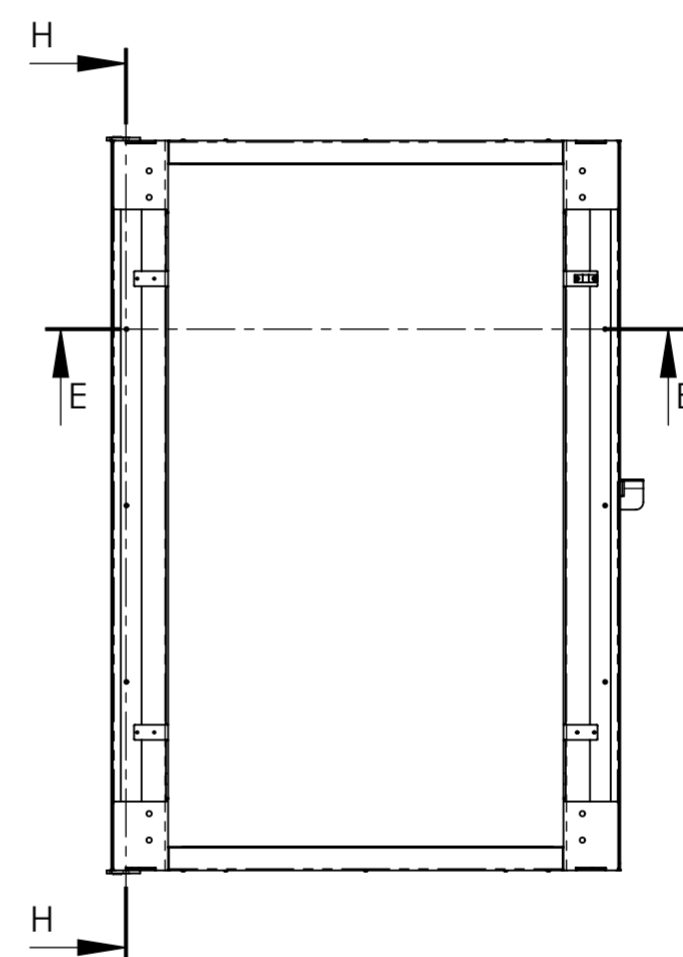
SCREEN CONNECTED TO CHANNELS WITH M10 FASTENERS



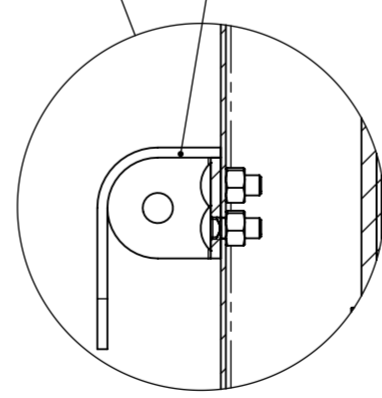
SECTION C-C



SECTION J-J



SECURE PADLOCK HANDLE WITH M8 CUP HEAD BOLTS




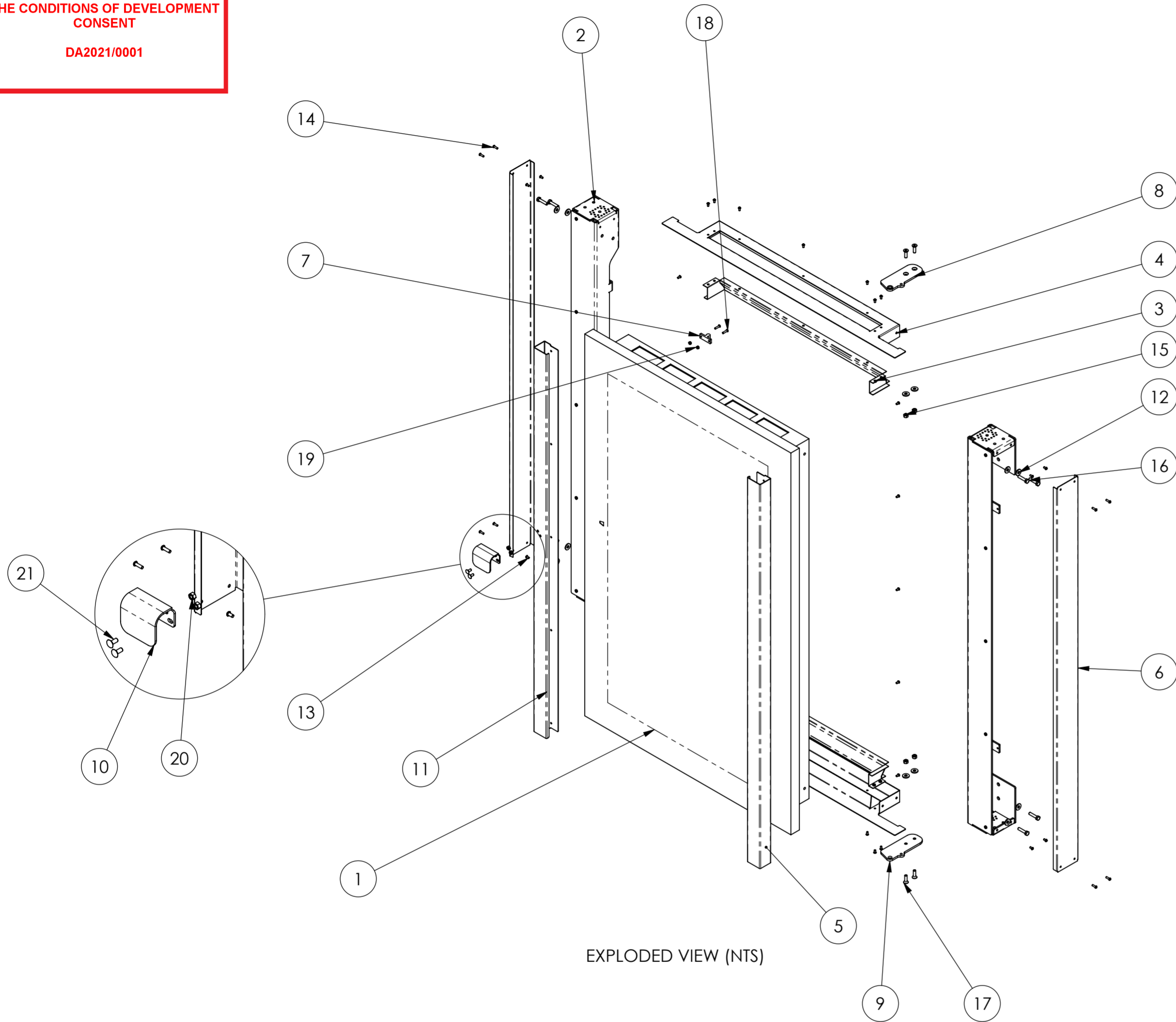
DETAIL L SCALE 1 : 3

NOTES:

- FUNCTIONAL DIMENSIONS SHOWN ONLY. REFER TO 3D CAD FILE FOR ALL OTHER DIMENSIONS &/ OR DRAFT
- 'L.P.' INDICATES ONE OR BOTH POINTS OF DIMENSION TAKEN AT THEORETICAL INTERSECTION POINT OF 2 LINES
- 'O/A' INDICATES OVERALL DIMENSION
- ALL DIMENSIONS IN mm
- TOLERANCE UNLESS SPECIFIED OTHERWISE:  
LINEAR ±0.1  
ANGULAR ±0.5
- PARTS TO BE FREE FROM SCRATCHES & DAMAGE
- ALL SURFACES TO BE SMOOTH, CLEAN & FREE OF ANY IMPERFECTIONS

A	ORIGINAL ISSUE	MB	01/06/2020	
REV	DESCRIPTION	DRAWN	DATE	
<b>VERT DESIGN</b>				
SUITE 7, 17 THURLOW ST REDFERN 2016 t: 9698 7770 www.vertdesign.com.au				
<b>DO NOT SCALE DRAWING</b>		<b>THIRD ANGLE PROJECTION</b>		<b>ISSUED FOR:</b>
TITLE	SCREEN SUB-ASSEMBLY	CLIENT	JOLT	<input type="checkbox"/> REFERENCE
MATERIAL	ZINCALUME STEEL	PROJECT	JOLT-PG	<input type="checkbox"/> PRODUCTION
FINISH-COLOUR	POWDERCOAT DULUX ARMOURS PRAY SATIN BLACK 9109024S	PART No.	JOLT-PG-SCR-SUB-01	<input checked="" type="checkbox"/> QUOTATION ONLY
MODEL REVISION	0.1	DRAWING REVISION	A	<input type="checkbox"/> CLIENT APPROVAL
DRAWN	MB	DATE	11/06/2020	<input type="checkbox"/> PROTOTYPE
		SHEET	1 OF 2	<input type="checkbox"/> PRELIMINARY TOOLING
		ASSEMBLY	JOLT-PG-GA-01	
		SCALE	1:20	A2


  
**THIS PLAN IS TO BE READ IN CONJUNCTION WITH THE CONDITIONS OF DEVELOPMENT CONSENT**
  
 DA2021/0001



EXPLODED VIEW (NTS)

NOTES:

- FUNCTIONAL DIMENSIONS SHOWN ONLY. REFER TO 3D CAD FILE FOR ALL OTHER DIMENSIONS &/ OR DRAFT
- 'L.P.' INDICATES ONE OR BOTH POINTS OF DIMENSION TAKEN AT THEORETICAL INTERSECTION POINT OF 2 LINES
- 'O/A' INDICATES OVERALL DIMENSION
- ALL DIMENSIONS IN mm
- TOLERANCE UNLESS SPECIFIED OTHERWISE:  
 LINEAR ±0.1  
 ANGULAR ±0.5
- PARTS TO BE FREE FROM SCRATCHES & DAMAGE
- ALL SURFACES TO BE SMOOTH, CLEAN & FREE OF ANY IMPERFECTIONS

ITEM NO.	PART NUMBER	DESCRIPTION	Default/ QTY.
1	LG screen block	LG AD SCREEN *FREE ISSUE ITEM*	1
2	jolt-pg-scr-p01_revA	SCR STRUCTURAL CHANNEL	2
3	jolt-pg-scr-p03_revA	SCR DUCTING	2
4	jolt-pg-scr-p02_revA	SCR TOP PLATE	2
5	jolt-pg-scr-p04_revA	SCR TRIM CHANNEL	1
6	jolt-pg-scr-p05_revA	SCR COVER PLATE	2
7	BH2132_door holder	STOCK PART (www.indrub.com.au)	1
8	jolt_pg_hng-p02_revA	HINGE PLATE TYPE A	1
9	jolt_pg_hng-p03_revA	HINGE PLATE TYPE A	1
10	jolt_pg_pad-p01_revA	PADLOCK HANDLE	1
11	jolt-pg-scr-p04_revA	SCR TRIM CHANNEL WITH PADLOCK HOLES	1
12	B18.22M - Plain washer, 10 mm, regular		12
13	B18.3.4M - 6 x 1.0 x 12 SBHCS --N		32
14	B18.3.4M - 6 x 1.0 x 20 SBHCS --N		8
15	B18.2.4.2M - Hex nut, Style 2, M10 x 1.5, with 16mm WAF --D-N		4
16	B18.2.3.5M - Hex bolt M10 x 1.5 x 45 --26N		8
17	B18.3.5M - 10 x 1.5 x 35 Socket FCHS --35N		4
18	B18.3.4M - 6 x 1.0 x 25 SBHCS --N		2
19	B18.2.4.2M - Hex nut, Style 2, M6 x 1 -D-N		4
20	B18.2.4.2M - Hex nut, Style 2, M8 x 1.25 --D-N		2
21	AS-NZS 1390 S - M8 x 20-N		2

A	ORIGINAL ISSUE	MB	01/06/2020
REV	DESCRIPTION	DRAWN	DATE
<b>VERT DESIGN</b> SUITE 7, 17 THURLOW ST REDFERN 2016 t: 9698 7770 www.vertdesign.com.au			
<b>DO NOT SCALE DRAWING</b>		<b>THIRD ANGLE PROJECTION</b>	
TITLE SCREEN SUB-ASSEMBLY		CLIENT JOLT	
MATERIAL ZINCALUME STEEL		PROJECT JOLT-PG	
FINISH-COLOUR POWDERCOAT DULUX ARMOURSPRAY SATIN BLACK 9109024S		PART No. JOLT-PG-SCR-SUB-01	
MODEL REVISION 0.1	DRAWING REVISION A	ASSEMBLY JOLT-PG-GA-01	SCALE 1:15
DRAWN MB	DATE 11/06/2020	SHEET 2 OF 2	A2
ISSUED FOR:		<input type="checkbox"/> REFERENCE <input type="checkbox"/> PRODUCTION <input checked="" type="checkbox"/> QUOTATION ONLY <input type="checkbox"/> CLIENT APPROVAL <input type="checkbox"/> PROTOTYPE <input type="checkbox"/> PRELIMINARY TOOLING	