

Location & Notes



Standard hours for construction:

Construction may only be carried out between 7.00 am and 6.00 pm on Monday to Friday, or between 8.00 am and 1.00 pm on Saturdays, and no construction is to be carried out at any time on a Sunday or a public holiday.

Compliance with plans:

Demolition

Any demolition must be carried out in accordance with AS 2601—2001, The demolition of structures.

Mechanical ventilation systems

If the work includes a mechanical ventilation system that is a regulated system within the meaning of the Public Health Act 2010, the system must be notified as required by the Public Health Regulation 2012, before an occupation certificate (whether interim or final) for the work is issued.

Food businesses

If the work relates to a food business within the meaning of the Food Act 2003, the food business must be notified as required by that Act, or licensed as required by the Food Regulation 2010, before an occupation certificate (whether interim or final) for the work is issued. Premises to be fitted out to comply with Standard 3.2.3 of the Australian and New Zealand Food Standards Code, the Food Act 2003 and Australian Standard AS 4674 'Design, construction and fit out of food premises',

Noise


- (1) The development must comply with the requirements for industrial premises contained in the Noise Policy.
- (2) Noise emitted by the development—
 - (a) must not exceed an L A (15 min) of 5dB(A) above background noise when measured at any lot boundary of the property where the development is being carried out, and
 - (b) must not cause the relevant amenity criteria in Table 2.1 in the Noise Policy to be exceeded.
- (3) In this clause, the Noise Policy means the document entitled NSW Industrial Noise Policy (ISBN 0 7313 2715 2) published in January 2000 by the Environment Protection Authority.

Lighting

- (1) All new external lighting must—
 - (a) comply with AS 4282–1997 Control of the obtrusive effects of outdoor lighting, and
 - (b) be mounted, screened and directed in a way that it does not create a nuisance or light spill on to buildings on adjoining lots or public places.
- (2) Lighting at vehicle access points to the development must be provided in accordance with AS/NZS 1158 Set:2010 Lighting for roads and public spaces Set.

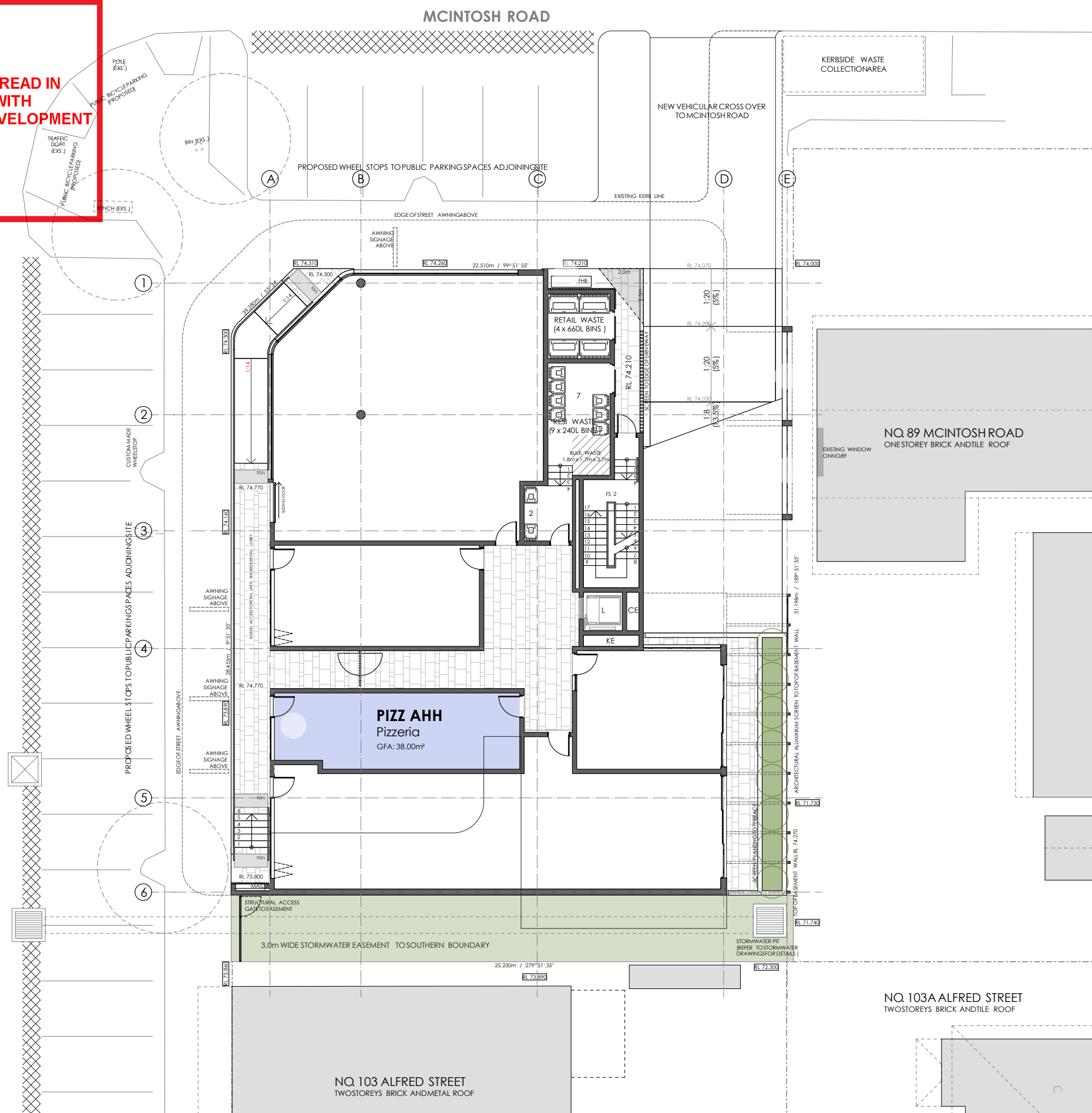
Use of driveways and parking areas

- (1) All driveways and parking areas must be unobstructed at all times.
- (2) Except as otherwise permitted by an existing condition of the most recent development consent (other than a complying development certificate) that applies to the premises, driveways and car spaces—
 - (a) must not be used for the manufacture, storage or display of goods, materials or any other equipment, and
 - (b) must be used solely for vehicular access and for the parking of vehicles associated with the use of the premises.

 Arid Design Studios	Client : Salt & Pepper Pty Ltd	Project #: SNP01.001	Scale:	Author GvW	Stage: Development	Rev: 00	ALL MEASUREMENTS ARE IN MILLIMETERS TOLERANCE 0.25mm (UNLESS SPECIFIED) SCALE ACCURATE @ A3 WRITTEN DIMENSIONS TAKE PRIORITY	Notes: All given dimensions that relate to products and product cutouts must be cross-referenced to product manufacture specification	
	Project: 91-93 McIntosh Rd, Narraweena, Pizzeria		Part Description:	Checked by: -	Arid Design Studios is the owner of the Copyright and all confidential information in this drawing and these illustrated concepts. They must not be copied in whole or in part, in any form or by any means, and the information in them must not be disclosed to any person or used for any purpose other than the specific purpose for which they are provided, without the prior written consent of the Company. The products depicted or described in this drawing and these written concepts may not be manufactured by any person other than the company.				
	Dwg Title: Location & Notes		Dwg #: A01	Date Saved: 9/04/2020 9:23:42 AM	Page Size: A3				



DA2020/0404



Dwg Title: **Site**

Dwg #: **A02**

Page Size: **A3**

All given dimensions that relate to products and product cutouts must be cross-referenced to product manufacturer specification



Architectural elevation drawing of the rear facade of a three-story building. The drawing includes vertical dimensions on the left and right sides, and horizontal dimensions at the bottom. The facade features large windows, brickwork, and a balcony. A red cloud highlights a circular illuminated sign under an awning on the ground floor. The drawing is labeled with grid lines E, D, C, B, and A from left to right.

Vertical dimensions (left side):

- ROOF: RL 84.370
- SECOND FLOOR: RL 81.270
- FIRST FLOOR: RL 78.170
- GROUND LEVEL: RL 74.770

Vertical dimensions (right side):

- 200
- 3100
- 3100
- 3400

Horizontal dimensions (bottom):

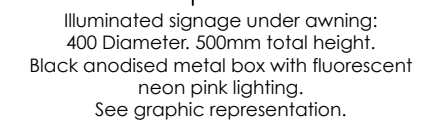
- 2700
- 2370
- 250
- 400

Grid lines (bottom):

- E
- D
- C
- B
- A

Other labels and notes:

- FBK 3 (Roof)
- FB1 (Second Floor)
- FB1 (First Floor)
- SLR (Ground Floor)
- awning
- 400 Diameter. 500mm total height.
- Black anodised metal box with fluorescent neon pink lighting.
- See graphic representation.



All given dimensions that relate to products and product cutouts must be cross-referenced to product manufacturer's specification

Dwg #: **A03**

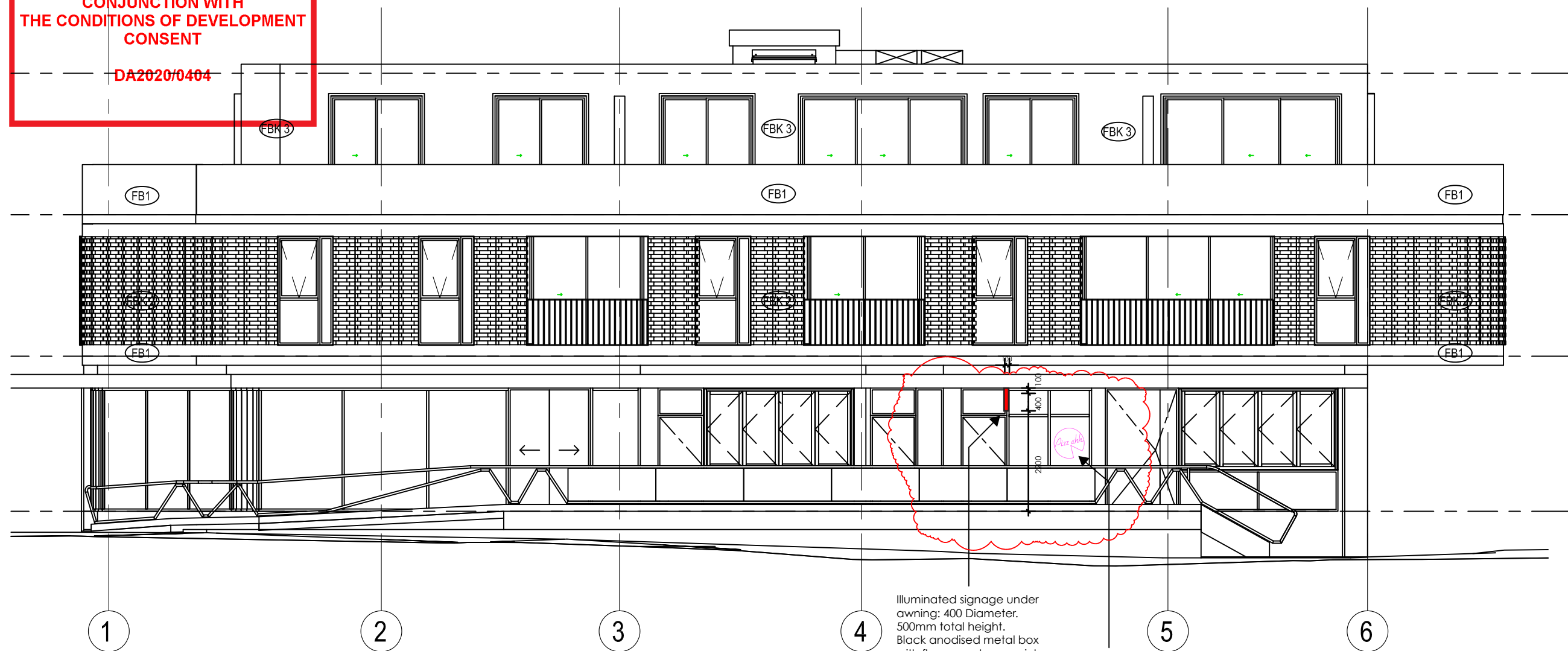
Page Size: **A3**Page Size: **A3**



northern
beaches
council

THIS PLAN IS TO BE READ IN
CONJUNCTION WITH
THE CONDITIONS OF DEVELOPMENT
CONSENT


DA2020/0404



Illuminated signage under awning: 400 Diameter. 500mm total height. Black anodised metal box with fluorescent neon pink lighting. See graphic representation.

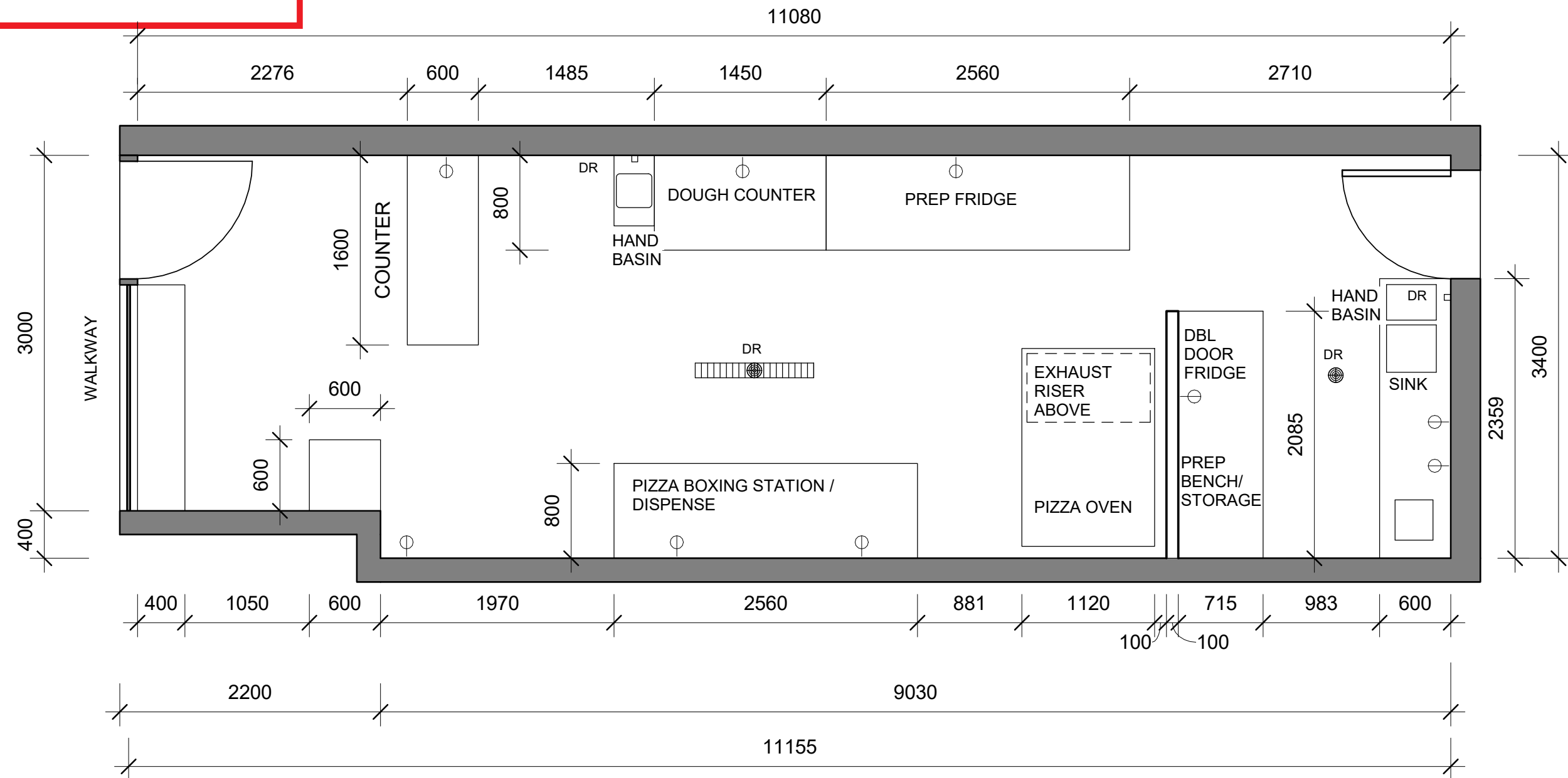
Illuminated signage in Window: 600 Diameter. Black anodised metal box with fluorescent neon pink lighting. See graphic representation, for visual effect.



 Arid Design Studios	Client : Salt & Pepper Pty Ltd	Project #: SNP01.001	Scale:	Author GvW	Stage: Development	Rev: 00	ALL MEASUREMENTS ARE IN MILLIMETERS TOLERANCE 0.25mm (UNLESS SPECIFIED) SCALE ACCURATE @ A3 WRITTEN DIMENSIONS TAKE PRIORITY	Notes: All given dimensions that relate to products and product cutouts must be cross-referenced to product manufacture specification
	Project: 91-93 McIntosh Rd, Narraweena, Pizzeria		Part Description:	Checked by: -	Arid Design Studios is the owner of the Copyright and all confidential information in this drawing and these illustrated concepts. They must not be copied in whole or in part, in any form or by any means, and the information in them must not be disclosed to any person or used for any purpose other than the specific purpose for which they were provided, without the prior written consent of the Company. The products depicted or described in this drawing and these written concepts may not be manufactured by any person other than the company.			
	Dwg Title: Signage Elevation 2		Dwg #: A04	Date Saved: 9/04/2020 9:23:43 AM				
				Page Size: A3				



DA2020/0404



Arid Design Studios

Dwg Title: **Plan**

Project #: **SNP01.001**

Part Description:	
-------------------	--

Dwg #: **A05**

Checked by: ▪

Date Saved: 9/04/2020 9:23:43

Page Size: **A3**

Rev: 00

ALL MEASUREMENTS
ARE IN MILLIMETERS

© 2008 The Authors
Journal compilation © 2008 Blackwell Publishing Ltd

TOI FRANCE 0.25mm

SCALE ACCURATE @ A

SCALE ACCURATE @ A3
WRITTEN DIMENSIONS

All given dimensions that relate to products and product cutouts must be cross-referenced to product manufacturer specification



northern
beaches
council

THIS PLAN IS TO BE READ IN
CONJUNCTION WITH
THE CONDITIONS OF DEVELOPMENT
CONSENT

DA2020/0404

