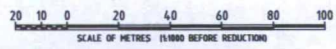


NOTE: LOCATION AND LEVEL OF ALL SERVICES TO BE CONFIRMED ON SITE

- LEGEND**
- - - - - EXISTING STORMWATER TO REMAIN
 - - - - - EXISTING STORMWATER TO BE REMOVED
 - - - - - PROPOSED STORMWATER (RCP)
 - - - - - PROPOSED STORMWATER (RCBC)
 - PROPOSED HIGH CAPACITY INLET
 - APPROXIMATE AREAS OF REGRAIDING
 - APPROXIMATE AREA OF CHANNEL REGRAIDING
 - PROPOSED STAGE 1 BUILDING WORKS
 - BOUNDARY
 - A1 LONGSECTION REFERENCE
 - - - - - ELECTRICITY
 - - - - - GAS
 - - - - - OPTICAL FIBRE
 - - - - - OPTUS
 - - - - - SEWER
 - - - - - TELSTRA
 - - - - - WATER



DATE PLOTTED: 05 August 2016 10:44am
 WESTFIELD DESIGN & CONSTRUCTION
 PROJECT NO: WDC-16-001
 SHEET NO: WDC-16-001-301
 DRAWING NO: WDC-16-001-301

I	16/08/2016	LAYOUT AMENDMENTS	DN	DNA
H	15/12/2014	FLOOD BARRIERS ADDED TO ACCESS ROAD	JT	DNA
G	08/08/2014	SECTION 96 THROUGH BING LEE	GV	DNA
F	30/07/2014	CULVERT AMENDED THROUGH BING LEE	DH	DNA
E	16/10/2013	LAYOUT AMENDMENTS	NDK	SGB
D	30/08/2013	LAYOUT AMENDMENTS	NDK	SGB
C	17/06/2013	COUNCIL AMENDMENTS	LJB	SGB
B			DNK	SGB
A			DNK	SGB

© Cardno (NSW) Pty Ltd All Rights Reserved.
 Copyright in the content and every part of this drawing belongs to Cardno (NSW) Pty Ltd and may not be copied, sold, transferred, copied or reproduced in whole or in part by any person or firm or in any way, to any person other than by agreement with Cardno (NSW) Pty Ltd.
 This document is produced by Cardno (NSW) Pty Ltd solely for the benefit of and use by the client in accordance with the terms of the contract. Cardno (NSW) Pty Ltd does not and shall not assume any responsibility or liability whatsoever to any third party arising out of the use or reliance by that party on the content of this document.

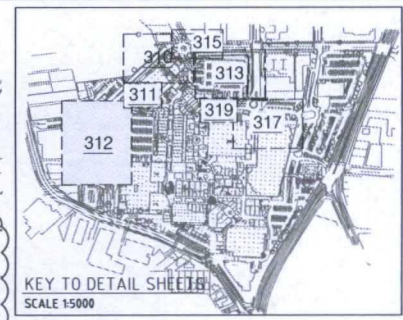
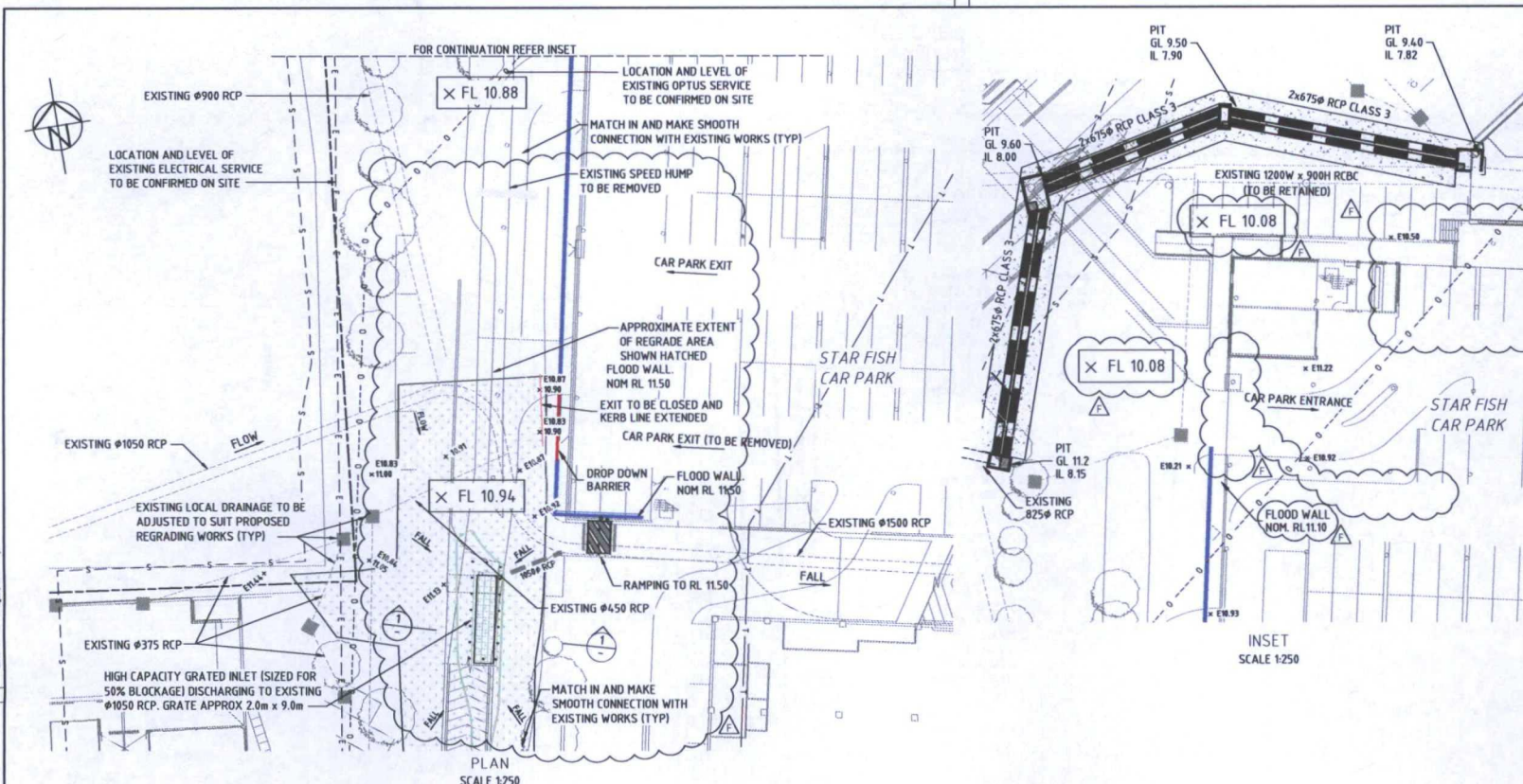


APPROVED:	DATE:	PROJECT DIRECTOR:	DATE:
DESIGNED:	PREPARED:	DESIGNED:	PREPARED:
SGB	BP	SGB	BP
DRAWN:	CHKD:	DRAWN:	CHKD:
NDK	SGB	NDK	SGB

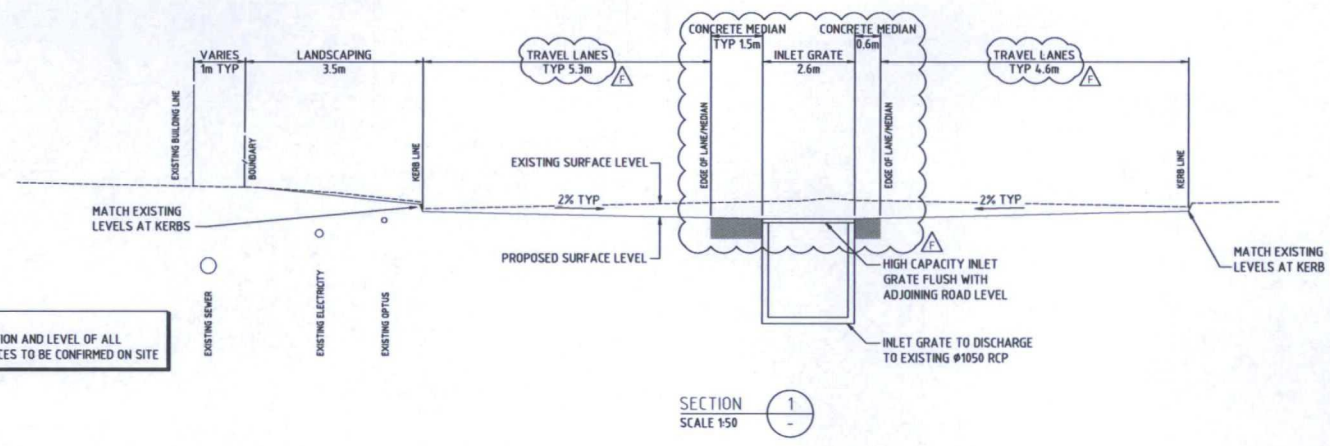
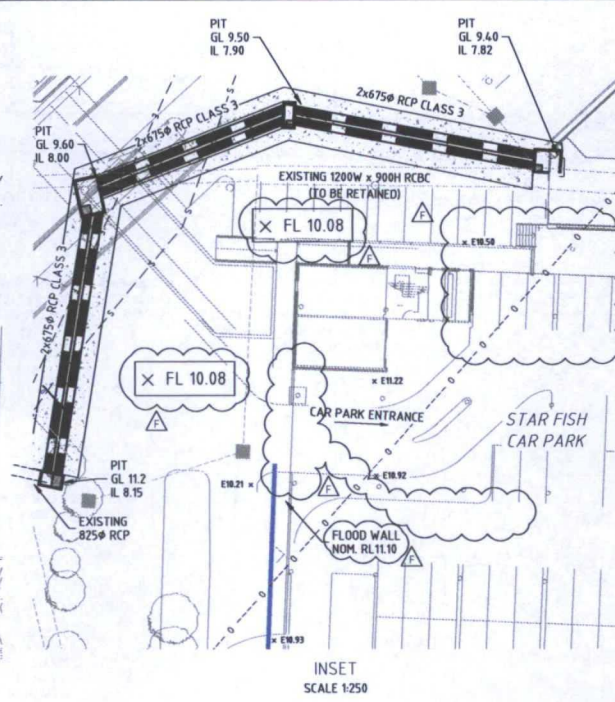
Cardno
 Cardno (NSW) Pty Ltd
 Level 3, 918 Pacific Highway, Gordon, NSW Australia 2072
 Phone: +61 2 9350 7000 Fax: +61 2 9350 7002
 Email: sydney@pdl.cardno.com.au Web: www.cardno.com.au

WESTFIELD DESIGN & CONSTRUCTION
 WARRINGAH MALL
 CONCEPT DRAINAGE AUGMENTATION WORKS
 STAGE 1 EXPANSION WORKS
 GENERAL ARRANGEMENT PLAN - STAGE 1 EXPANSION WORKS

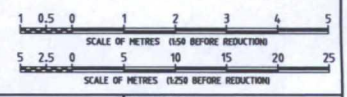
DRAWING STATUS:
NOT FOR CONSTRUCTION
 DRAWING NUMBER:
W4548-301



- LEGEND**
- EXISTING**
- x E10.87 EXISTING LEVEL
 - EXISTING LOCAL DRAINAGE
- PROPOSED**
- x 11.00 PROPOSED LEVEL
 - PROPOSED BOLLARD
 - x FL 10.93 100 YEAR ARI FLOOD LEVEL (m AHD)
 - APPROXIMATE AREA OF REGRADE
 - PROPOSED HIGH CAPACITY GRATE
 - PROPOSED FLOOD WALL
 - PROPOSED FLOOD BARRIER/SHUTTER
- SERVICES**
- E — ELECTRICITY
 - G — GAS
 - T — OPTICAL FIBRE
 - O — OPTUS
 - S — SEWER
 - T — TELSTRA
 - W — WATER
- NOTE: ALL SERVICE LOCATIONS ARE INDICATIVE ONLY.



NOTE:
LOCATION AND LEVEL OF ALL
SERVICES TO BE CONFIRMED ON SITE



DATE PUBLISHED: 10 August 2016 - 16:00
DRAWN BY: SGB, CHECKED BY: BP, PROJECT MANAGER: SGB, PROJECT DIRECTOR: SGB
DRAWING NO: W4548-312, SHEET NO: 1 OF 1, SCALE: 1:250, PROJECT: WESTFIELD WARRINGAH MALL CONCEPT DRAINAGE AUGMENTATION WORKS

REV	DATE	REVISIONS	BY	CHK
F	18/08/2016	LAYOUT AMENDMENTS	CN	DNA
E	30/07/2016	CULVERT AMENDED THOROUGH BING LEE	CH	DNA
D	30/06/2016	LAYOUT AMENDMENTS	NOK	SGB
C	17/06/2016	COUNCIL AMENDMENTS	LLO	SGB
B	22/05/2016	CLIENT AMENDMENTS	NOK	SGB
A	07/05/2016	SECTION 96 APPLICATION	NOK	SGB
0			DN	CHK

© Cardno (NSW) Pty Ltd All Rights Reserved.
Copyright in the whole and every part of this drawing belongs to Cardno (NSW) Pty Ltd and may not be used, copied, transferred, copied or reproduced in whole or in part in any manner or form or on any media, in any person other than by agreement with Cardno (NSW) Pty Ltd.

This document is prepared by Cardno (NSW) Pty Ltd solely for the benefit of and use by the Client in accordance with the terms of the contract. Cardno (NSW) Pty Ltd does not and shall not assume any responsibility or liability whatsoever for any third party reliance on any use or reliance by third party on the content of this document.

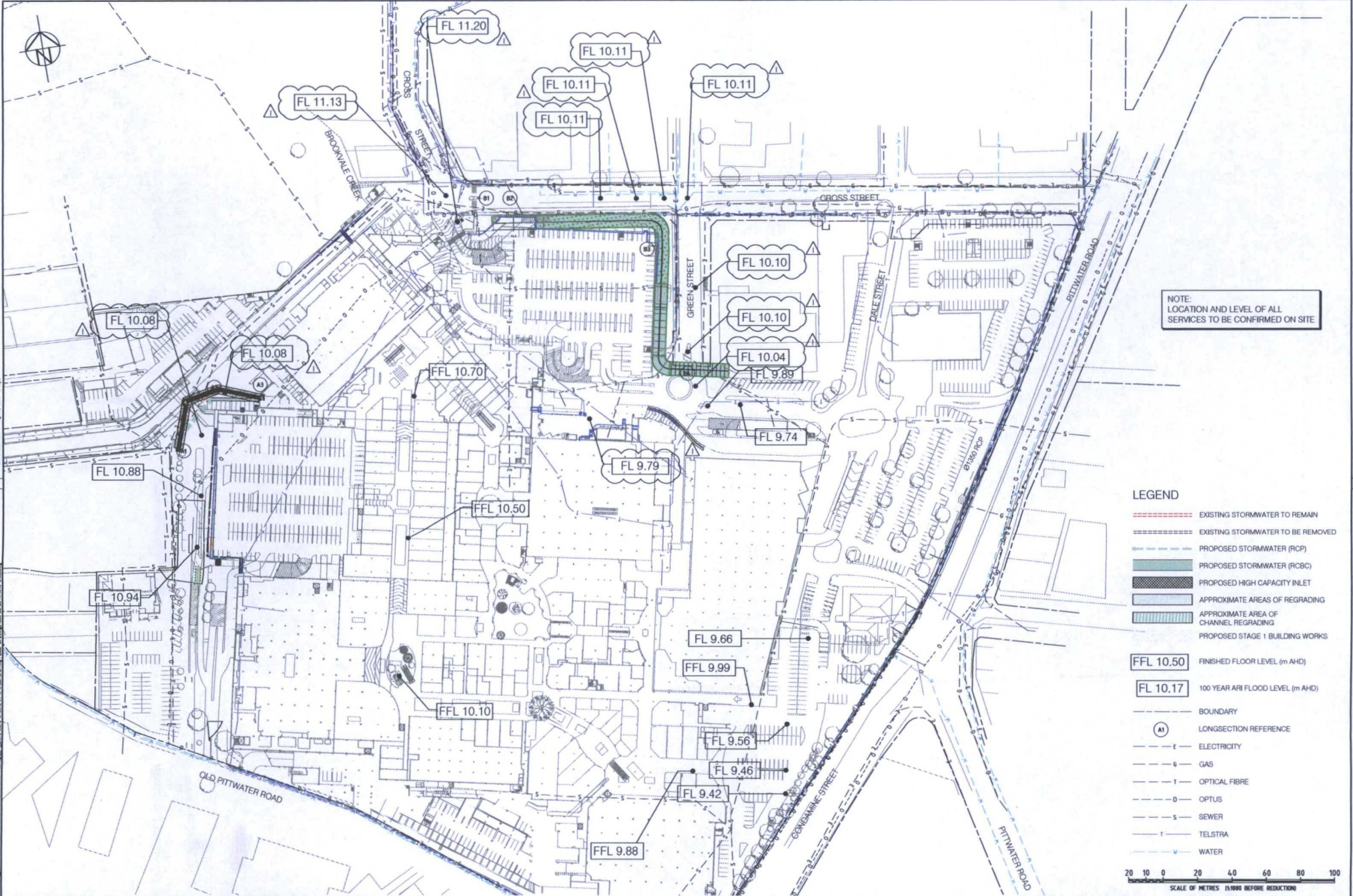
Westfield Design & Construction Pty Limited
100 William Street, Sydney, NSW 2000
Phone: 800 900 7000 Fax: 800 900 7001
Email: sydney@pdc.cardno.com.au Web: www.cardno.com.au
A10 100 201 000

APPROVED:	PROJECT DIRECTOR:	DATE:	PROJECT MANAGER:	DATE:

Westfield DESIGN & CONSTRUCTION
WARRINGAH MALL
CONCEPT DRAINAGE AUGMENTATION WORKS
STAGE 1 EXPANSION WORKS
DETAIL ARRANGEMENT PLAN - STARFISH CARPARK

NOT FOR CONSTRUCTION

DRAWING NO: W4548-312
REV: F



NOTE:
LOCATION AND LEVEL OF ALL
SERVICES TO BE CONFIRMED ON SITE

LEGEND

- - - - - EXISTING STORMWATER TO REMAIN
- - - - - EXISTING STORMWATER TO BE REMOVED
- - - - - PROPOSED STORMWATER (RCP)
- - - - - PROPOSED STORMWATER (RCBC)
- - - - - PROPOSED HIGH CAPACITY INLET
- - - - - APPROXIMATE AREAS OF REGRADING
- - - - - APPROXIMATE AREA OF CHANNEL REGRADING
- - - - - PROPOSED STAGE 1 BUILDING WORKS

FFL 10.50 FINISHED FLOOR LEVEL (m AHD)
FL 10.17 100 YEAR ARI FLOOD LEVEL (m AHD)

- BOUNDARY
- (A1) LONGSECTION REFERENCE
- - - - - ELECTRICITY
- - - - - GAS
- - - - - OPTICAL FIBRE
- - - - - OPTUS
- - - - - SEWER
- - - - - TELSTRA
- - - - - WATER

20 10 0 20 40 60 80 100
SCALE OF METRES 1:1000 BEFORE REDUCTION

1	18/08/2016	LAYOUT AMENDMENTS	CM	DNA
2	15/10/2016	FLOOD LEVELS AMENDED	JT	DNA
3	13/08/2016	FLOOD LEVELS REVISED	GV	DNA
4	30/07/2016	CULVERT AMENDED THROUGH BING LEE	DH	DNA
5	16/10/2015	LAYOUT AMENDMENTS	NDK	SGB
6	30/08/2015	LAYOUT AMENDMENTS	NDK	SGB
7	29/04/2015	AMENDED FLOOD LEVELS	LDB	SGB
REV	DATE	REVISED	BY	CHK

Westfield

This document is produced by Cardno (NSW) Pty Ltd on behalf of Westfield Design & Construction Pty Ltd. The use of this document is restricted to the project for which it was prepared and shall not be used for any other purpose without the written consent of Westfield Design & Construction Pty Ltd.

Westfield Design & Construction Pty Ltd
Level 3, 710 Pacific Highway, Gordon, NSW Australia 2072
Phone: 02 9375 1700 Fax: 02 9375 1702
Email: sydney@wfd.com.au
www.westfield.com.au

Cardno (NSW) Pty Ltd
ABN 95 801 915 876
Level 3, 710 Pacific Highway, Gordon, NSW Australia 2072
Phone: 02 9375 1700 Fax: 02 9375 1702
Email: sydney@wfd.com.au
www.westfield.com.au

APPROVED: PROJECT DIRECTOR DATE: REVIEWED: PROJECT MANAGER DATE:

DESIGNED: SGB BP
DRAWN: NDK SGB

Westfield DESIGN & CONSTRUCTION

WARRINGAH MALL
CONCEPT DRAINAGE AUGMENTATION WORKS
STAGE 1 EXPANSION WORKS
GENERAL ARRANGEMENT PLAN - STAGE 1 EXPANSION WORKS

DRAWING STATUS: **NOT FOR CONSTRUCTION**

DRAWING NUMBER: **W4548-318**

REV: **1**

DRAWN BY: J. GARDNER, L. S. GARDNER, K. S. GARDNER, A. C. GARDNER, S. GARDNER, R. GARDNER, M. GARDNER, J. GARDNER, K. GARDNER, L. GARDNER, M. GARDNER, N. GARDNER, O. GARDNER, P. GARDNER, Q. GARDNER, R. GARDNER, S. GARDNER, T. GARDNER, U. GARDNER, V. GARDNER, W. GARDNER, X. GARDNER, Y. GARDNER, Z. GARDNER, AA. GARDNER, AB. GARDNER, AC. GARDNER, AD. GARDNER, AE. GARDNER, AF. GARDNER, AG. GARDNER, AH. GARDNER, AI. GARDNER, AJ. GARDNER, AK. GARDNER, AL. GARDNER, AM. GARDNER, AN. GARDNER, AO. GARDNER, AP. GARDNER, AQ. GARDNER, AR. GARDNER, AS. GARDNER, AT. GARDNER, AU. GARDNER, AV. GARDNER, AW. GARDNER, AX. GARDNER, AY. GARDNER, AZ. GARDNER, BA. GARDNER, BB. GARDNER, BC. GARDNER, BD. GARDNER, BE. GARDNER, BF. GARDNER, BG. GARDNER, BH. GARDNER, BI. GARDNER, BJ. GARDNER, BK. GARDNER, BL. GARDNER, BM. GARDNER, BN. GARDNER, BO. GARDNER, BP. GARDNER, BQ. GARDNER, BR. GARDNER, BS. GARDNER, BT. GARDNER, BU. GARDNER, BV. GARDNER, BW. GARDNER, BX. GARDNER, BY. GARDNER, BZ. GARDNER, CA. GARDNER, CB. GARDNER, CC. GARDNER, CD. GARDNER, CE. GARDNER, CF. GARDNER, CG. GARDNER, CH. GARDNER, CI. GARDNER, CJ. GARDNER, CK. GARDNER, CL. GARDNER, CM. GARDNER, CN. GARDNER, CO. GARDNER, CP. GARDNER, CQ. GARDNER, CR. GARDNER, CS. GARDNER, CT. GARDNER, CU. GARDNER, CV. GARDNER, CW. GARDNER, CX. GARDNER, CY. GARDNER, CZ. GARDNER, DA. GARDNER, DB. GARDNER, DC. GARDNER, DD. GARDNER, DE. GARDNER, DF. GARDNER, DG. GARDNER, DH. GARDNER, DI. GARDNER, DJ. GARDNER, DK. GARDNER, DL. GARDNER, DM. GARDNER, DN. GARDNER, DO. GARDNER, DP. GARDNER, DQ. GARDNER, DR. GARDNER, DS. GARDNER, DT. GARDNER, DU. GARDNER, DV. GARDNER, DW. GARDNER, DX. GARDNER, DY. GARDNER, DZ. GARDNER, EA. GARDNER, EB. GARDNER, EC. GARDNER, ED. GARDNER, EE. GARDNER, EF. GARDNER, EG. GARDNER, EH. GARDNER, EI. GARDNER, EJ. GARDNER, EK. GARDNER, EL. GARDNER, EM. GARDNER, EN. GARDNER, EO. GARDNER, EP. GARDNER, EQ. GARDNER, ER. GARDNER, ES. GARDNER, ET. GARDNER, EU. GARDNER, EV. GARDNER, EW. GARDNER, EX. GARDNER, EY. GARDNER, EZ. GARDNER, FA. GARDNER, FB. GARDNER, FC. GARDNER, FD. GARDNER, FE. GARDNER, FF. GARDNER, FG. GARDNER, FH. GARDNER, FI. GARDNER, FJ. GARDNER, FK. GARDNER, FL. GARDNER, FM. GARDNER, FN. GARDNER, FO. GARDNER, FP. GARDNER, FQ. GARDNER, FR. GARDNER, FS. GARDNER, FT. GARDNER, FU. GARDNER, FV. GARDNER, FW. GARDNER, FX. GARDNER, FY. GARDNER, FZ. GARDNER, GA. GARDNER, GB. GARDNER, GC. GARDNER, GD. GARDNER, GE. GARDNER, GF. GARDNER, GH. GARDNER, GI. GARDNER, GJ. GARDNER, GK. GARDNER, GL. GARDNER, GM. GARDNER, GN. GARDNER, GO. GARDNER, GP. GARDNER, GQ. GARDNER, GR. GARDNER, GS. GARDNER, GT. GARDNER, GU. GARDNER, GV. GARDNER, GW. GARDNER, GX. GARDNER, GY. GARDNER, GZ. GARDNER, HA. GARDNER, HB. GARDNER, HC. GARDNER, HD. GARDNER, HE. GARDNER, HF. GARDNER, HG. GARDNER, HI. GARDNER, HJ. GARDNER, HK. GARDNER, HL. GARDNER, HM. GARDNER, HN. GARDNER, HO. GARDNER, HP. GARDNER, HQ. GARDNER, HR. GARDNER, HS. GARDNER, HT. GARDNER, HU. GARDNER, HV. GARDNER, HW. GARDNER, HX. GARDNER, HY. GARDNER, HZ. GARDNER, IA. GARDNER, IB. GARDNER, IC. GARDNER, ID. GARDNER, IE. GARDNER, IF. GARDNER, IG. GARDNER, IH. GARDNER, II. GARDNER, IJ. GARDNER, IK. GARDNER, IL. GARDNER, IM. GARDNER, IN. GARDNER, IO. GARDNER, IP. GARDNER, IQ. GARDNER, IR. GARDNER, IS. GARDNER, IT. GARDNER, IU. GARDNER, IV. GARDNER, IW. GARDNER, IX. GARDNER, IY. GARDNER, IZ. GARDNER, JA. GARDNER, JB. GARDNER, JC. GARDNER, JD. GARDNER, JE. GARDNER, JF. GARDNER, JG. GARDNER, JH. GARDNER, JI. GARDNER, JJ. GARDNER, JK. GARDNER, JL. GARDNER, JM. GARDNER, JN. GARDNER, JO. GARDNER, JP. GARDNER, JQ. GARDNER, JR. GARDNER, JS. GARDNER, JT. GARDNER, JU. GARDNER, JV. GARDNER, JW. GARDNER, JX. GARDNER, JY. GARDNER, JZ. GARDNER, KA. GARDNER, KB. GARDNER, KC. GARDNER, KD. GARDNER, KE. GARDNER, KF. GARDNER, KG. GARDNER, KH. GARDNER, KI. GARDNER, KJ. GARDNER, KK. GARDNER, KL. GARDNER, KM. GARDNER, KN. GARDNER, KO. GARDNER, KP. GARDNER, KQ. GARDNER, KR. GARDNER, KS. GARDNER, KT. GARDNER, KU. GARDNER, KV. GARDNER, KW. GARDNER, KX. GARDNER, KY. GARDNER, KZ. GARDNER, LA. GARDNER, LB. GARDNER, LC. GARDNER, LD. GARDNER, LE. GARDNER, LF. GARDNER, LG. GARDNER, LH. GARDNER, LI. GARDNER, LJ. GARDNER, LK. GARDNER, LL. GARDNER, LM. GARDNER, LN. GARDNER, LO. GARDNER, LP. GARDNER, LQ. GARDNER, LR. GARDNER, LS. GARDNER, LT. GARDNER, LU. GARDNER, LV. GARDNER, LW. GARDNER, LX. GARDNER, LY. GARDNER, LZ. GARDNER, MA. GARDNER, MB. GARDNER, MC. GARDNER, MD. GARDNER, ME. GARDNER, MF. GARDNER, MG. GARDNER, MH. GARDNER, MI. GARDNER, MJ. GARDNER, MK. GARDNER, ML. GARDNER, MM. GARDNER, MN. GARDNER, MO. GARDNER, MP. GARDNER, MQ. GARDNER, MR. GARDNER, MS. GARDNER, MT. GARDNER, MU. GARDNER, MV. GARDNER, MW. GARDNER, MX. GARDNER, MY. GARDNER, MZ. GARDNER, NA. GARDNER, NB. GARDNER, NC. GARDNER, ND. GARDNER, NE. GARDNER, NF. GARDNER, NG. GARDNER, NH. GARDNER, NI. GARDNER, NJ. GARDNER, NK. GARDNER, NL. GARDNER, NM. GARDNER, NO. GARDNER, NP. GARDNER, NQ. GARDNER, NR. GARDNER, NS. GARDNER, NT. GARDNER, NU. GARDNER, NV. GARDNER, NW. GARDNER, NX. GARDNER, NY. GARDNER, NZ. GARDNER, OA. GARDNER, OB. GARDNER, OC. GARDNER, OD. GARDNER, OE. GARDNER, OF. GARDNER, OG. GARDNER, OH. GARDNER, OI. GARDNER, OJ. GARDNER, OK. GARDNER, OL. GARDNER, OM. GARDNER, ON. GARDNER, OO. GARDNER, OP. GARDNER, OQ. GARDNER, OR. GARDNER, OS. GARDNER, OT. GARDNER, OU. GARDNER, OV. GARDNER, OW. GARDNER, OX. GARDNER, OY. GARDNER, OZ. GARDNER, PA. GARDNER, PB. GARDNER, PC. GARDNER, PD. GARDNER, PE. GARDNER, PF. GARDNER, PG. GARDNER, PH. GARDNER, PI. GARDNER, PJ. GARDNER, PK. GARDNER, PL. GARDNER, PM. GARDNER, PN. GARDNER, PO. GARDNER, PP. GARDNER, PQ. GARDNER, PR. GARDNER, PS. GARDNER, PT. GARDNER, PU. GARDNER, PV. GARDNER, PW. GARDNER, PX. GARDNER, PY. GARDNER, PZ. GARDNER, QA. GARDNER, QB. GARDNER, QC. GARDNER, QD. GARDNER, QE. GARDNER, QF. GARDNER, QG. GARDNER, QH. GARDNER, QI. GARDNER, QJ. GARDNER, QK. GARDNER, QL. GARDNER, QM. GARDNER, QN. GARDNER, QO. GARDNER, QP. GARDNER, QQ. GARDNER, QR. GARDNER, QS. GARDNER, QT. GARDNER, QU. GARDNER, QV. GARDNER, QW. GARDNER, QX. GARDNER, QY. GARDNER, QZ. GARDNER, RA. GARDNER, RB. GARDNER, RC. GARDNER, RD. GARDNER, RE. GARDNER, RF. GARDNER, RG. GARDNER, RH. GARDNER, RI. GARDNER, RJ. GARDNER, RK. GARDNER, RL. GARDNER, RM. GARDNER, RN. GARDNER, RO. GARDNER, RP. GARDNER, RQ. GARDNER, RR. GARDNER, RS. GARDNER, RT. GARDNER, RU. GARDNER, RV. GARDNER, RW. GARDNER, RX. GARDNER, RY. GARDNER, RZ. GARDNER, SA. GARDNER, SB. GARDNER, SC. GARDNER, SD. GARDNER, SE. GARDNER, SF. GARDNER, SG. GARDNER, SH. GARDNER, SI. GARDNER, SJ. GARDNER, SK. GARDNER, SL. GARDNER, SM. GARDNER, SN. GARDNER, SO. GARDNER, SP. GARDNER, SQ. GARDNER, SR. GARDNER, SS. GARDNER, ST. GARDNER, SU. GARDNER, SV. GARDNER, SW. GARDNER, SX. GARDNER, SY. GARDNER, SZ. GARDNER, TA. GARDNER, TB. GARDNER, TC. GARDNER, TD. GARDNER, TE. GARDNER, TF. GARDNER, TG. GARDNER, TH. GARDNER, TI. GARDNER, TJ. GARDNER, TK. GARDNER, TL. GARDNER, TM. GARDNER, TN. GARDNER, TO. GARDNER, TP. GARDNER, TQ. GARDNER, TR. GARDNER, TS. GARDNER, TT. GARDNER, TU. GARDNER, TV. GARDNER, TW. GARDNER, TX. GARDNER, TY. GARDNER, TZ. GARDNER, UA. GARDNER, UB. GARDNER, UC. GARDNER, UD. GARDNER, UE. GARDNER, UF. GARDNER, UG. GARDNER, UH. GARDNER, UI. GARDNER, UJ. GARDNER, UK. GARDNER, UL. GARDNER, UM. GARDNER, UN. GARDNER, UO. GARDNER, UP. GARDNER, UQ. GARDNER, UR. GARDNER, US. GARDNER, UT. GARDNER, UY. GARDNER, UZ. GARDNER, VA. GARDNER, VB. GARDNER, VC. GARDNER, VD. GARDNER, VE. GARDNER, VF. GARDNER, VG. GARDNER, VH. GARDNER, VI. GARDNER, VJ. GARDNER, VK. GARDNER, VL. GARDNER, VM. GARDNER, VN. GARDNER, VO. GARDNER, VP. GARDNER, VQ. GARDNER, VR. GARDNER, VS. GARDNER, VT. GARDNER, VU. GARDNER, VV. GARDNER, VW. GARDNER, VX. GARDNER, VY. GARDNER, VZ. GARDNER, WA. GARDNER, WB. GARDNER, WC. GARDNER, WD. GARDNER, WE. GARDNER, WF. GARDNER, WG. GARDNER, WH. GARDNER, WI. GARDNER, WJ. GARDNER, WK. GARDNER, WL. GARDNER, WM. GARDNER, WN. GARDNER, WO. GARDNER, WP. GARDNER, WQ. GARDNER, WR. GARDNER, WS. GARDNER, WT. GARDNER, WU. GARDNER, WV. GARDNER, WW. GARDNER, WX. GARDNER, WY. GARDNER, WZ. GARDNER, XA. GARDNER, XB. GARDNER, XC. GARDNER, XD. GARDNER, XE. GARDNER, XF. GARDNER, XG. GARDNER, XH. GARDNER, XI. GARDNER, XJ. GARDNER, XK. GARDNER, XL. GARDNER, XM. GARDNER, XN. GARDNER, XO. GARDNER, XP. GARDNER, XQ. GARDNER, XR. GARDNER, XS. GARDNER, XT. GARDNER, XU. GARDNER, XV. GARDNER, XW. GARDNER, XX. GARDNER, XY. GARDNER, XZ. GARDNER, YA. GARDNER, YB. GARDNER, YC. GARDNER, YD. GARDNER, YE. GARDNER, YF. GARDNER, YG. GARDNER, YH. GARDNER, YI. GARDNER, YJ. GARDNER, YK. GARDNER, YL. GARDNER, YM. GARDNER, YN. GARDNER, YO. GARDNER, YP. GARDNER, YQ. GARDNER, YR. GARDNER, YS. GARDNER, YT. GARDNER, YU. GARDNER, YV. GARDNER, YW. GARDNER, YX. GARDNER, YY. GARDNER, YZ. GARDNER, ZA. GARDNER, ZB. GARDNER, ZC. GARDNER, ZD. GARDNER, ZE. GARDNER, ZF. GARDNER, ZG. GARDNER, ZH. GARDNER, ZI. GARDNER, ZJ. GARDNER, ZK. GARDNER, ZL. GARDNER, ZM. GARDNER, ZN. GARDNER, ZO. GARDNER, ZP. GARDNER, ZQ. GARDNER, ZR. GARDNER, ZS. GARDNER, ZT. GARDNER, ZU. GARDNER, ZV. GARDNER, ZW. GARDNER, ZX. GARDNER, ZY. GARDNER, ZZ. GARDNER