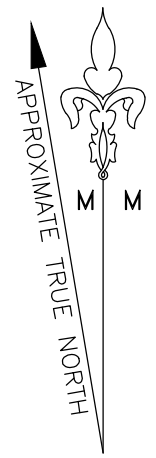
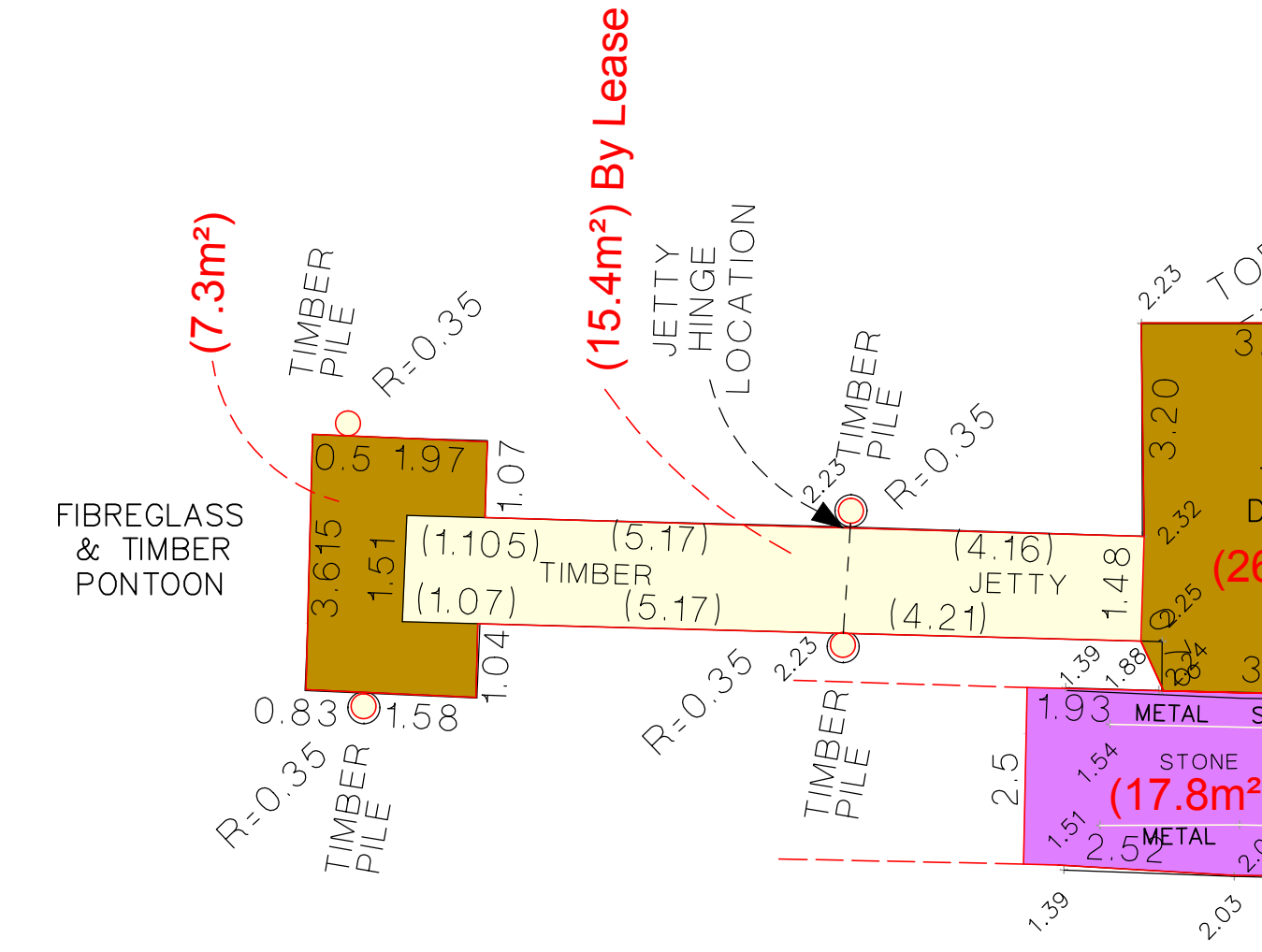


PART LOT 91
D.P. 13620
RESERVE FOR ACCESS AND DRAINAGE



PITTWATER
CAREEL
BAY

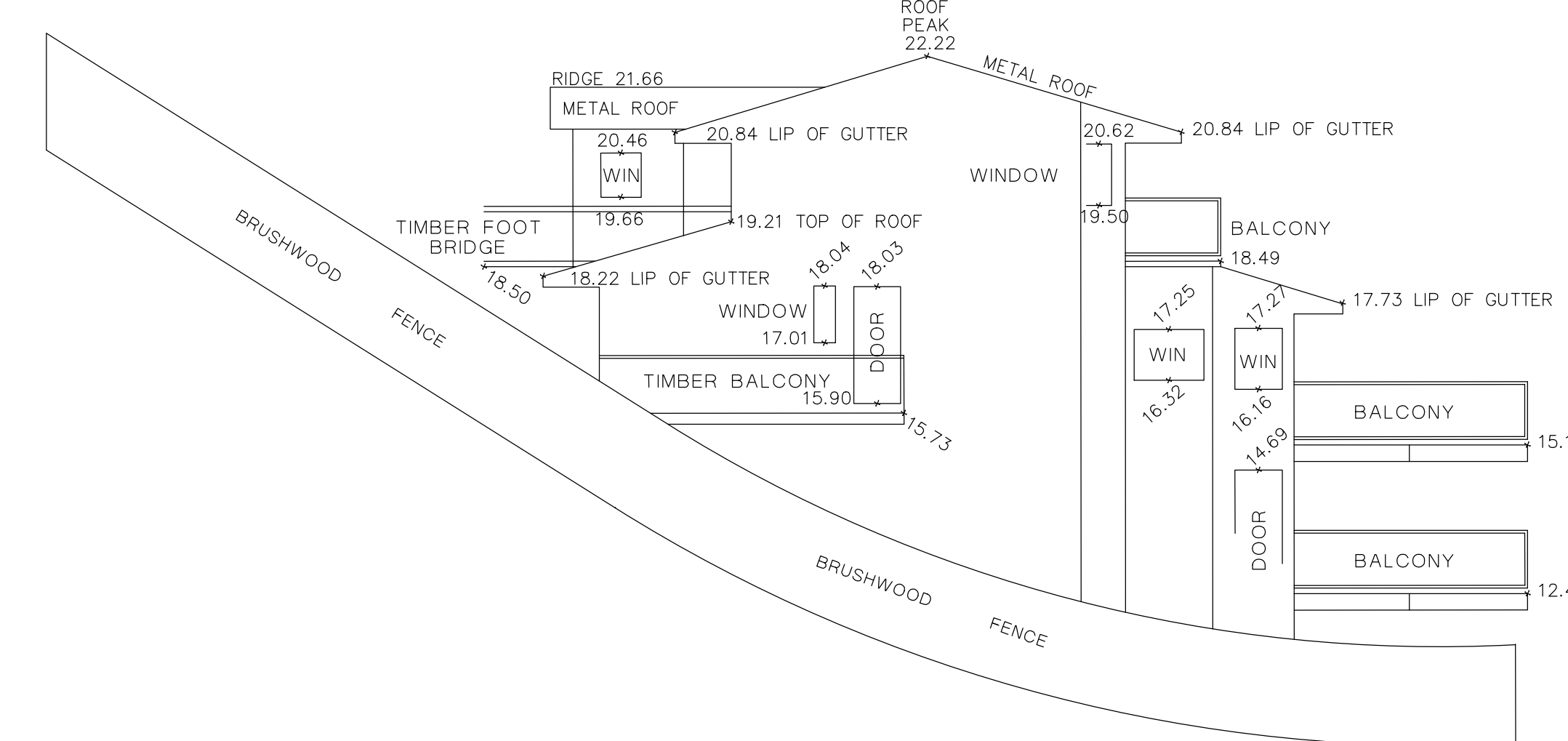
BARRENJOEY
ROAD



- NOTES
- The boundaries shown hereon have been compiled from Plans available from the Department of Lands and are subject to survey.
 - The relationship between features and boundaries is diagrammatic only.
 - No investigation has been made of underground services on or adjacent to this land.
 - Restriction on building may apply to this land.
 - For origin of levels see M B S Green & Associates Pty. Ltd. plan number A1 M4668.
 - Subtract 0.95m from levels hereon, to relate to AHD. (Origin of Levels SSM 101517 Adopted RL as 21955)
 - Bearings shown hereon are related to magnetic meridian. Add 9° 30' to each bearing to relate to approximate True North.
 - Subject to covenant C153652
 - Mean High Water Mark shown hereon scaled from plans obtained from Department of Lands and are subject to survey.
 - See Department of Lands Diagram Licence No. 432087 (31 July 2009) for lease boundaries adjacent to LOT 46 DP 13620.



NORTHERN ELEVATION OF RESIDENCE No. 965
(AUGUST 2007)
DIAGRAM
1:100



COPYRIGHT
THIS DRAWING HAS BEEN PROCESSED ELECTRONICALLY.
NEITHER THE PAPER REPRESENTATION NOR THE ELECTRONIC
FILE MAY BE COPIED IN PART OR WHOLE WITHOUT THE
WRITTEN APPROVAL OF FRANK M MASON & CO. PTY LTD.

FRANK M MASON & CO. PTY LTD
LAND AND ENGINEERING SURVEYORS
CONSULTANTS IN LAND DEVELOPMENT
KIRRIBILLI 2
P.O. Box 56, WILSONS POINT NSW 1565
Tel 02 9929 6233
02 9955 5385
Fax 02 9929 7722
info@mason.net.au

Drawn	SW	Surveyor	SW	Datum	SEE NOTE 5	Date	04.05.2015
Reduction Ratio	Size	Drawing Name	Sheet	of			
1:100	A0	32147-62					