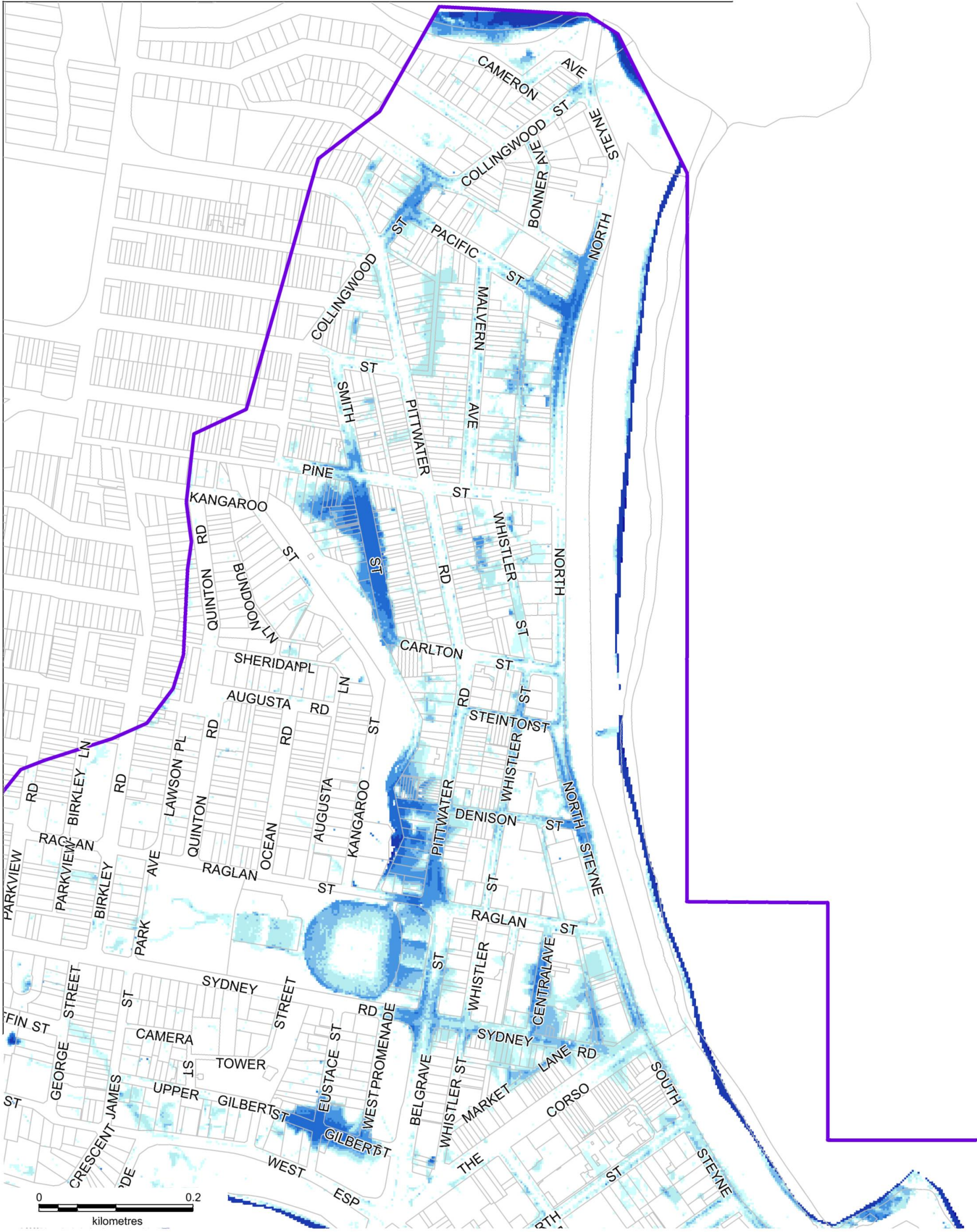


APPENDIX

A

VALIDATION FIGURES



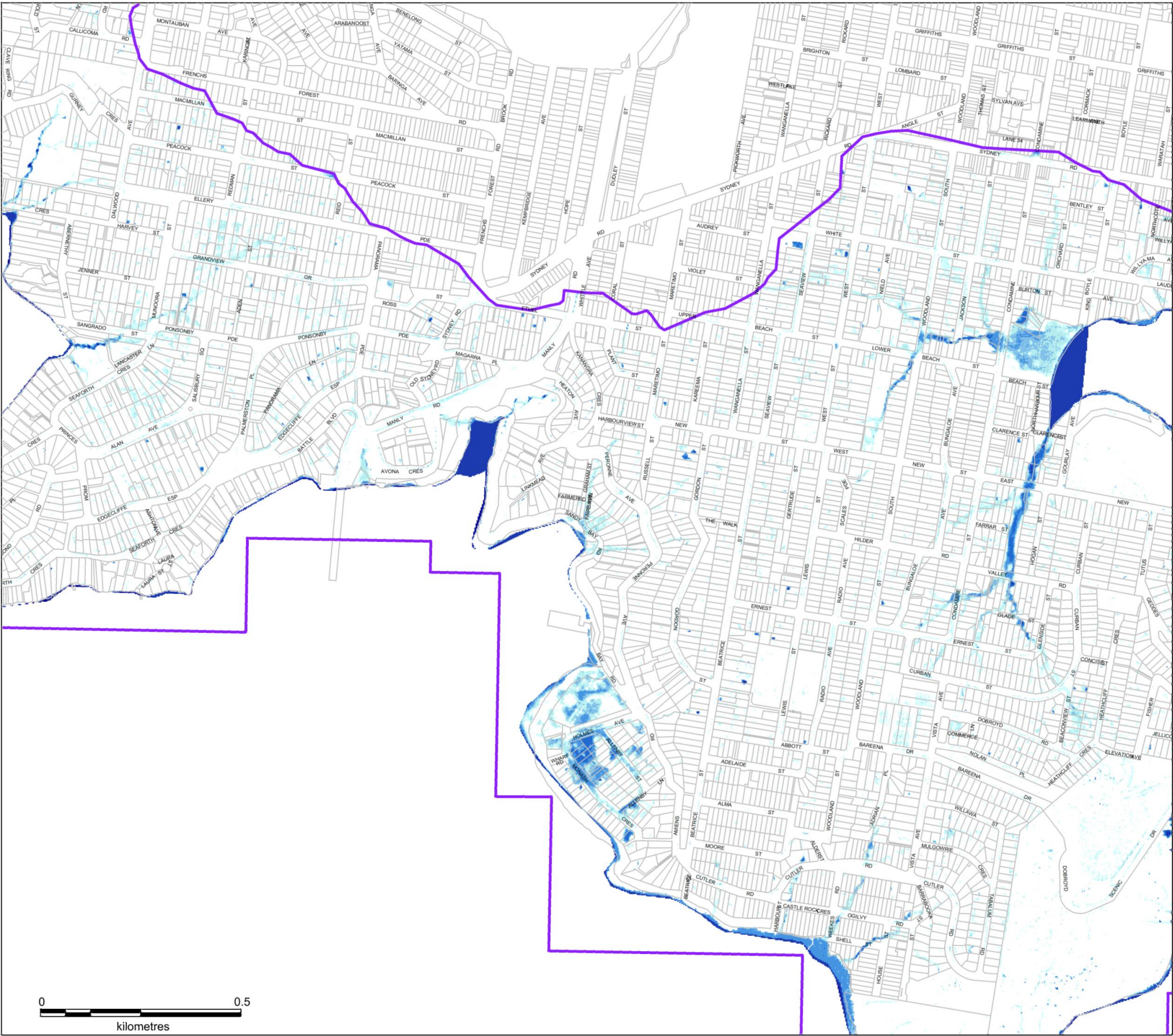
Manly to Seaforth Flood Study

12 / 02 / 2010
Rainfall Event



Cardno

Map Produced by: NSW/ACT (Water and Environment)
Date: 15 / 12 / 2014
Coordinate System: MGA Zone 56
Project: NA49913018



Manly to Seaforth Flood Study

12 / 02 / 2010
Rainfall Event

Maximum Depth (m)

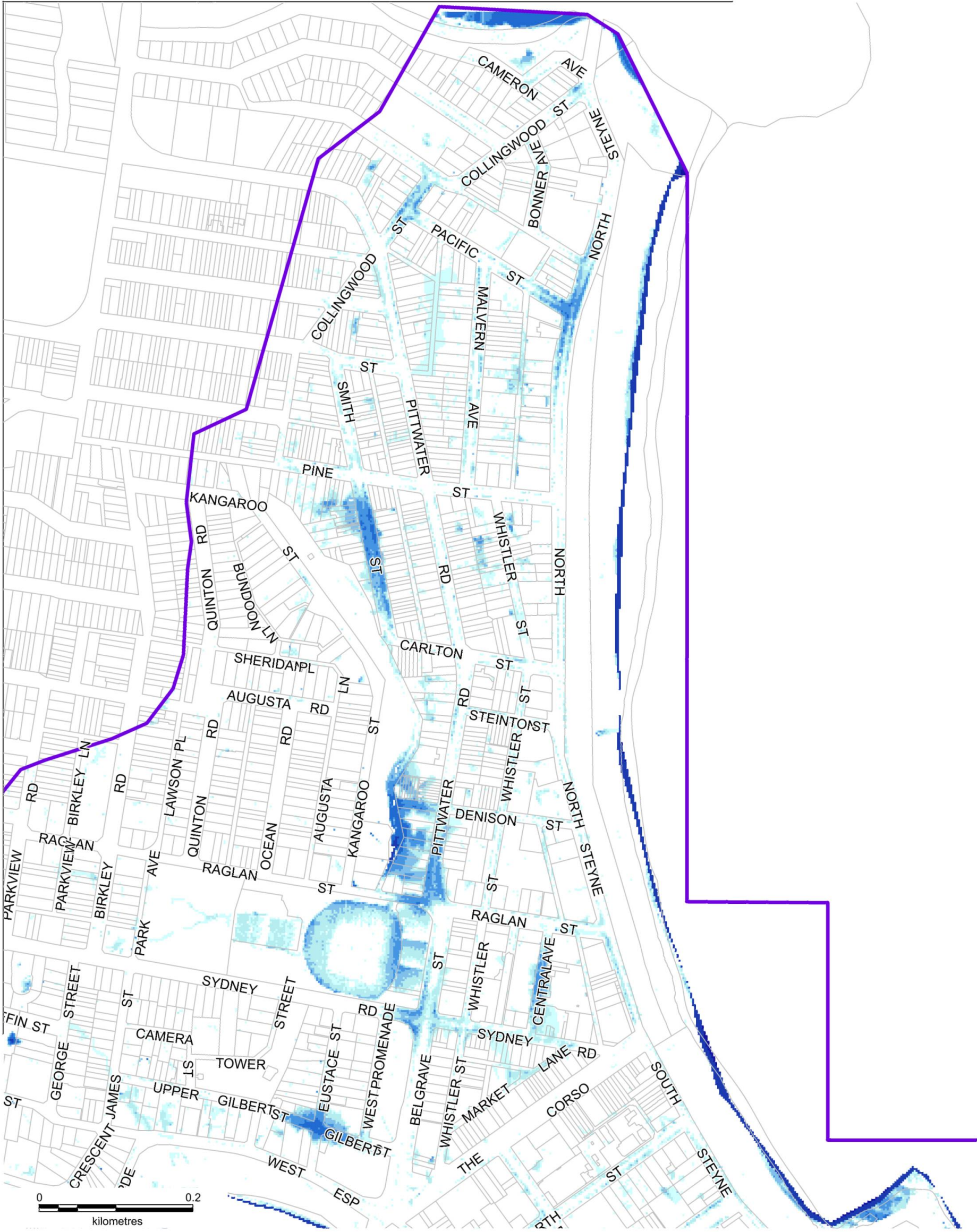
- 2 to 10
- 1.5 to 2
- 1 to 1.5
- 0.5 to 1
- 0.3 to 0.5
- 0.2 to 0.3
- 0.1 to 0.2
- 0.05 to 0.1

Study Area



Map Produced by: NSW/ACT (Water and Environment)
Date: 15 / 12 / 2014
Coordinate System: MGA Zone 56
Project: NA49913018

Validation Event Hydraulic Model Results 12/02/2010, West Model Area



Maximum Depth (m)

2 to 10	0.3 to 0.5
1.5 to 2	0.2 to 0.3
1 to 1.5	0.1 to 0.2
0.5 to 1	0.05 to 0.1

Study Area

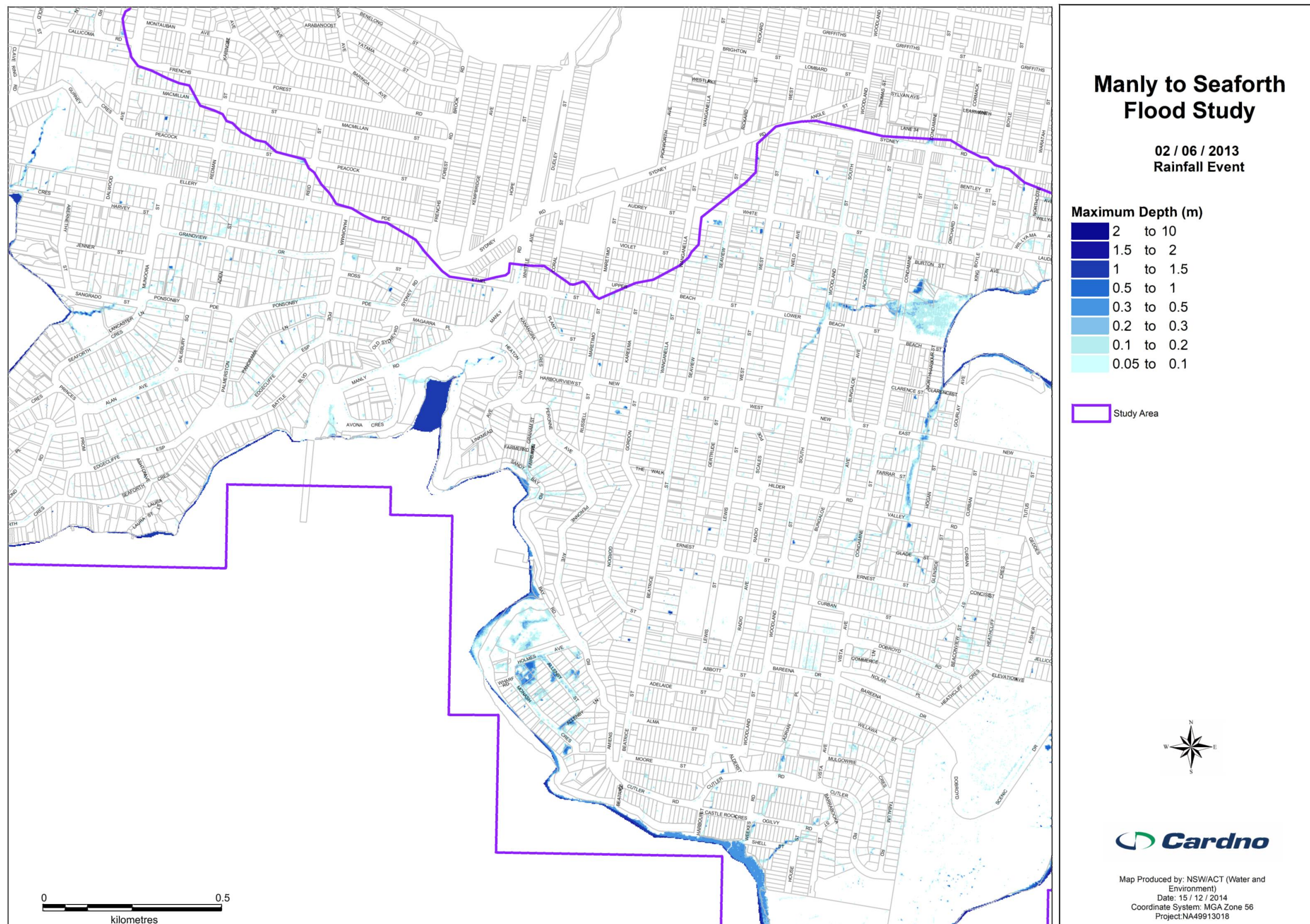
Manly to Seaforth Flood Study

02 / 06 / 2013
Rainfall Event

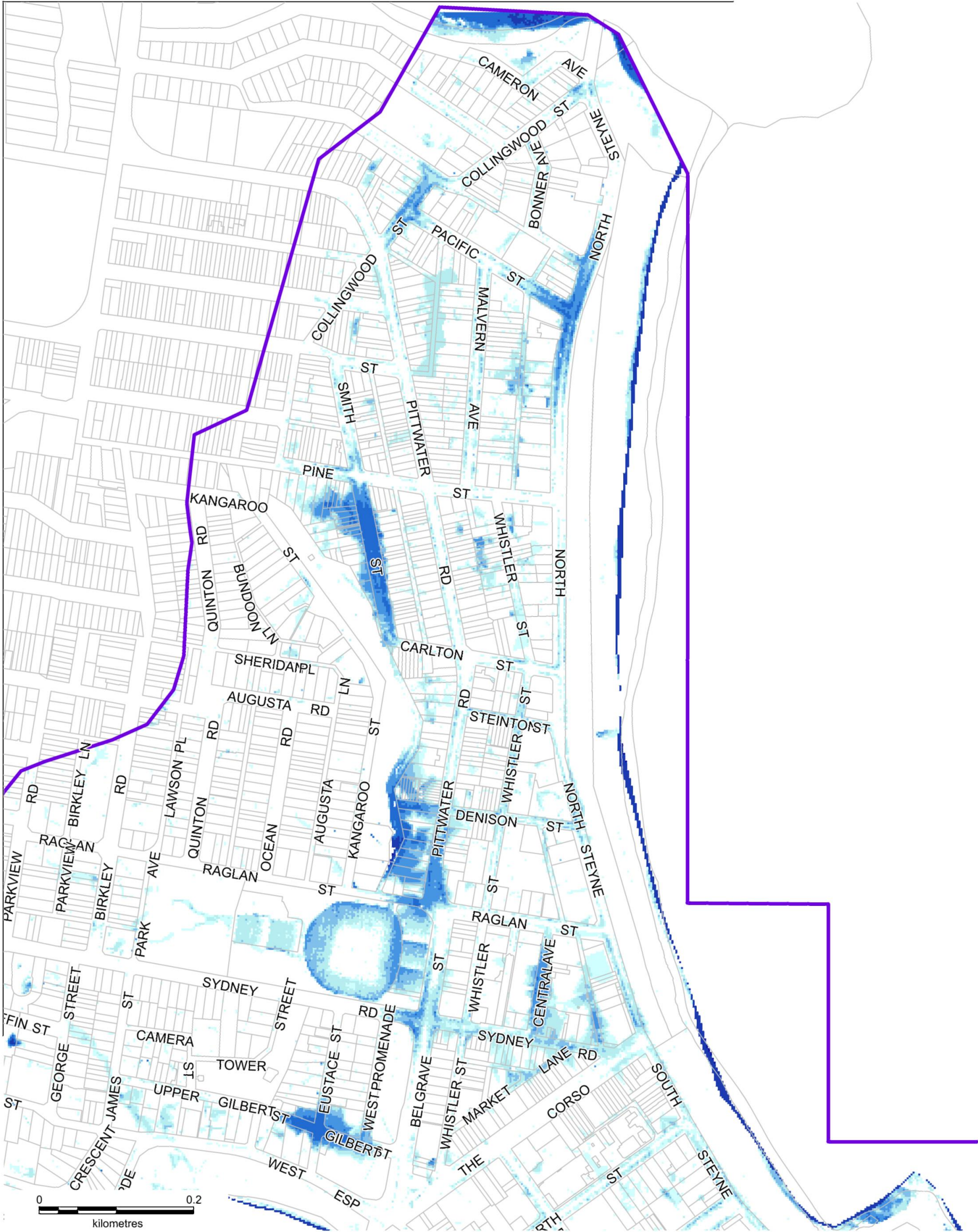


Cardno

Map Produced by: NSW/ACT (Water and Environment)
Date: 15 / 12 / 2014
Coordinate System: MGA Zone 56
Project: NA49913018



Validation Event Hydraulic Model Results 2/06/2013, West Model Area



Maximum Depth (m)			
	2 to 10		0.3 to 0.5
	1.5 to 2		0.2 to 0.3
	1 to 1.5		0.1 to 0.2
	0.5 to 1		0.05 to 0.1
	Study Area		

Manly to Seaforth Flood Study

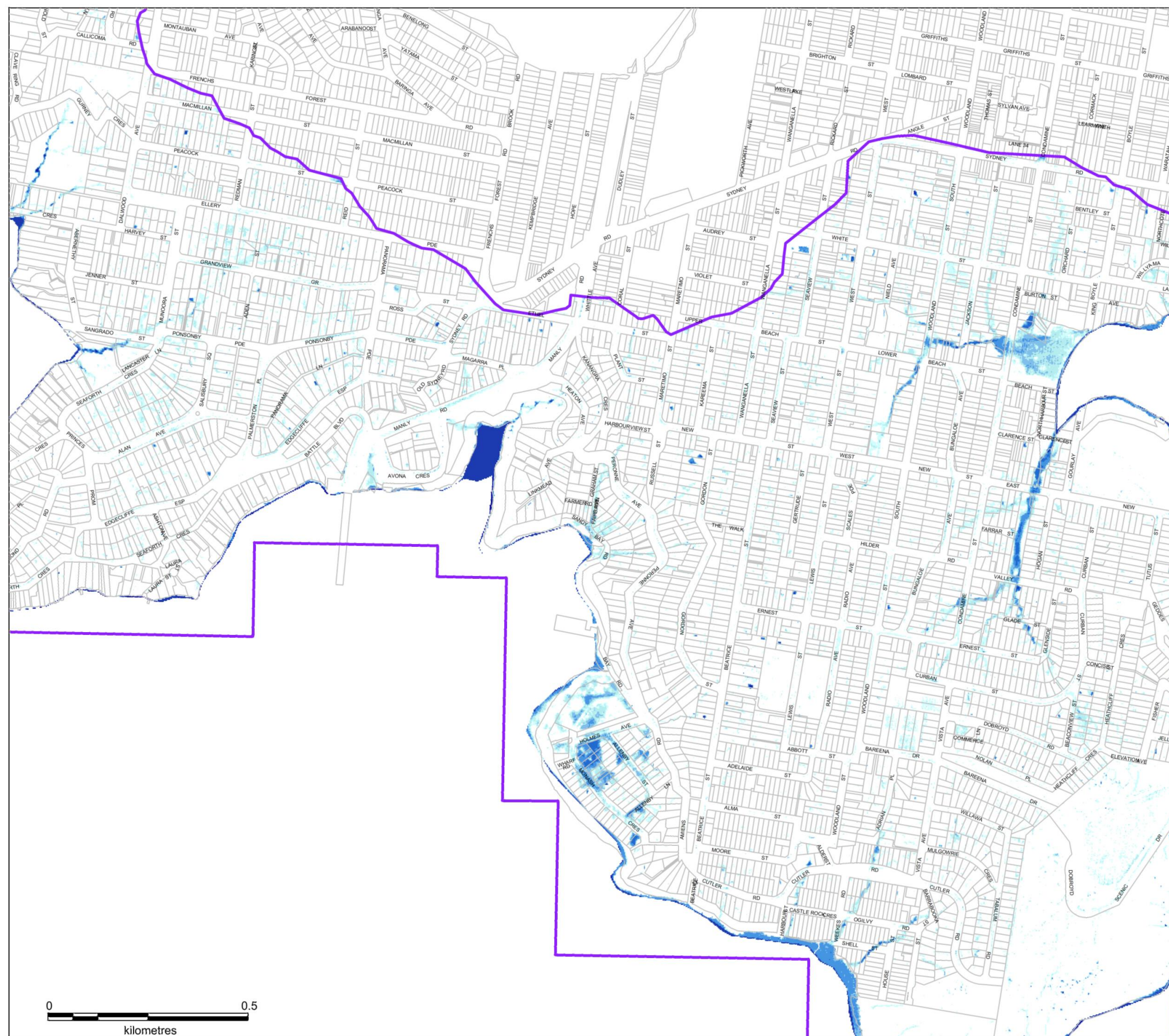
28 / 10 / 2013
Rainfall Event



Cardno

Map Produced by: NSW/ACT (Water and Environment)
Date: 15 / 12 / 2014
Coordinate System: MGA Zone 56
Project: NA49913018

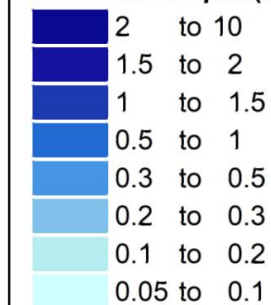
Validation Event Hydraulic Model Results 28/10/2013, East Model Area



Manly to Seaforth Flood Study

28 / 10 / 2013
Rainfall Event

Maximum Depth (m)



Study Area



Map Produced by: NSW/ACT (Water and
Environment)
Date: 15 / 12 / 2014
Coordinate System: MGA Zone 56
Project: NA49913018

Validation Event Hydraulic Model Results 28/10/2013, West Model Area