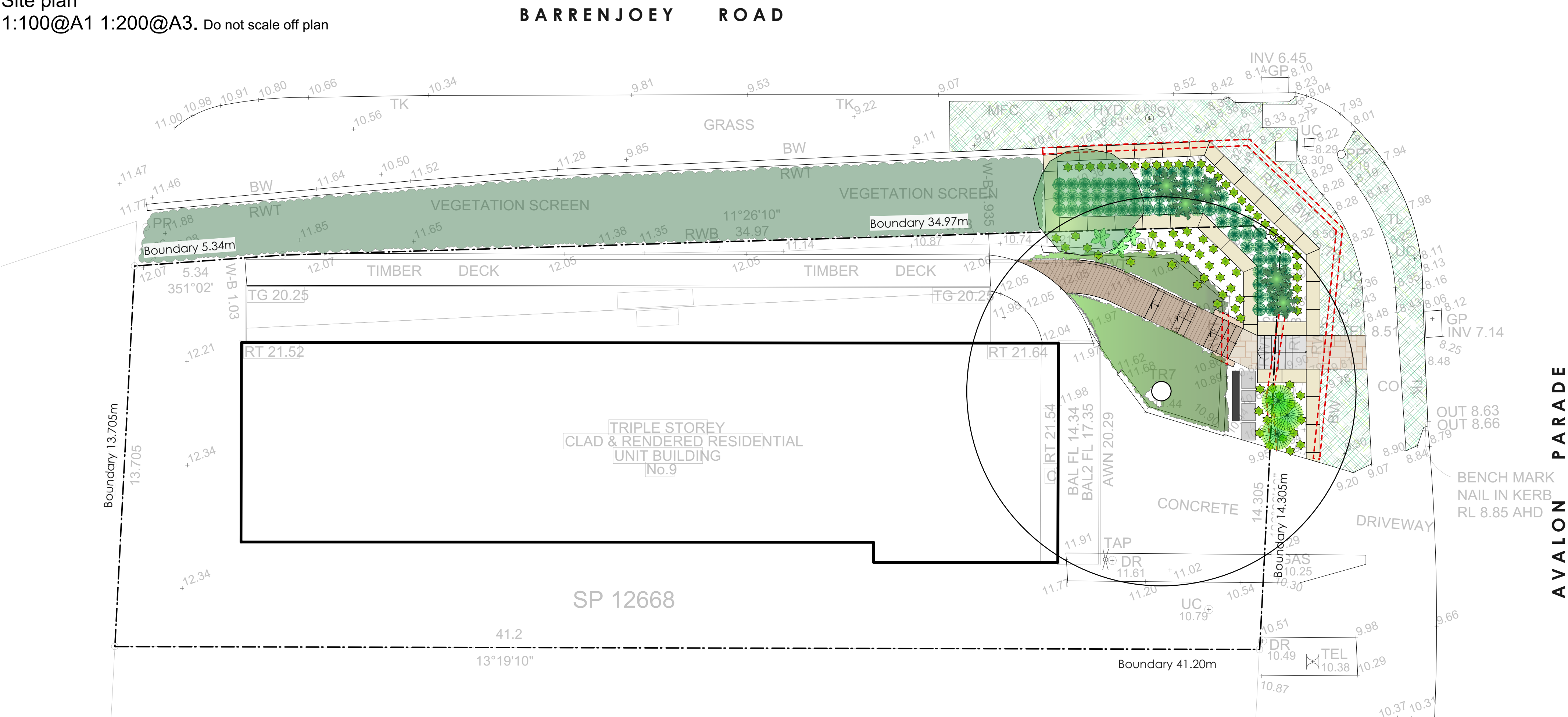
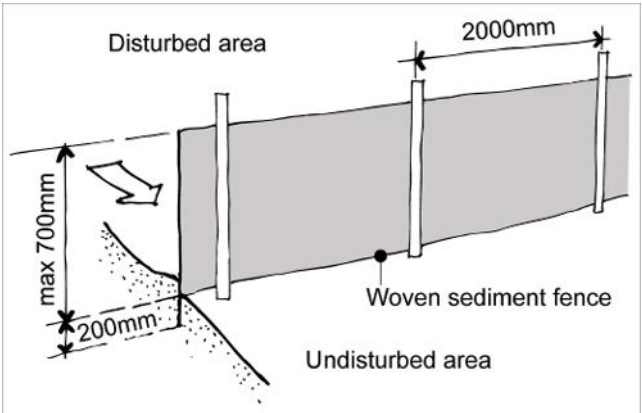
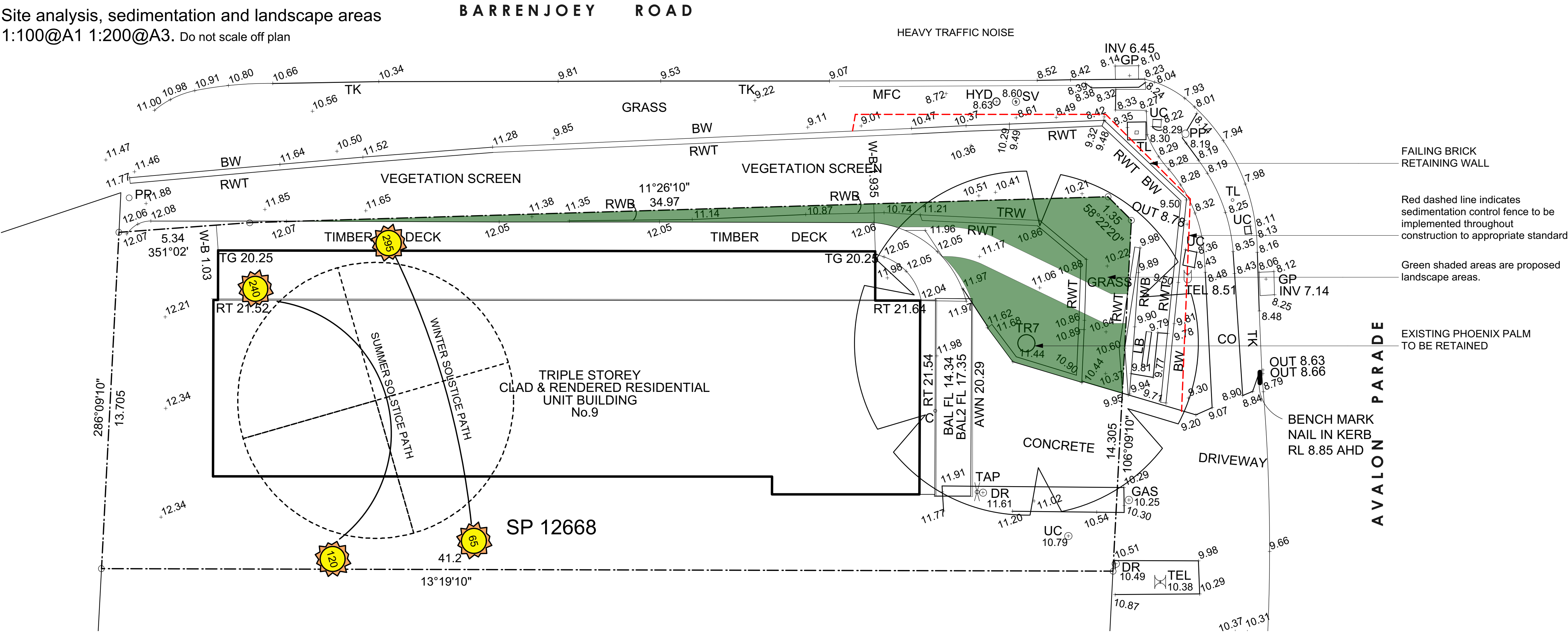


Site plan
1:100@A1 1:200@A3. Do not scale off plan



- Legend**
- TURF AREA
 - TIMBER DECKING
 - CONCRETE PAVING
 - UNIT PAVING
 - STAIRS
 - PEBBLE
 - COBBLESTONE
 - TIMBER
 - WATER
 - MASONRY RETAINING WALL
 - STONE RETAINING WALL
 - TIMBER RETAINING WALL
 - BOULDER RETAINING WALL
 - SITE OR WORKS BOUNDARY
 - PROPOSED LEVEL
 - TOP OF WALL LEVEL
 - MATERIAL NAME
 - SURFACE FALL DIRECTION
 - SURFACE DRAINS
 - SURVEY (50% GREY LINES)
 - EXISTING TREE TO RETAIN
 - EXISTING TREE TO REMOVE
 - EXISTING ROCK OUTCROP

Site analysis, sedimentation and landscape areas
1:100@A1 1:200@A3. Do not scale off plan



Sedimentation Control Fence
Not to scale.
Source: www.yourhome.gov.au

| AREA CALCULATION | | |
|--------------------------|-----------|------------|
| | AREA (m2) | PERCENTAGE |
| Site | 600 | |
| Landscape total existing | 66.79 | 11.13% |
| Landscape total proposed | 55.96 | 9.33% |

| | | |
|---|----------|------------------------|
| E | 11/11/21 | Issue E for DA |
| D | 12/11/20 | DA coordination |
| C | 19/02/20 | DA coordination |
| B | 05/02/20 | DRAFT issue for review |
| A | 09/12/19 | DRAFT issue for review |

Notes:
>Do not scale off plan.
>Contractors to check all measurements onsite before quoting or commencing work.
>If abnormalities arise, contact the Landscape Architect.
>This design is copyright and is not to be reproduced in anyway without written consent of Jamie King Landscape Architect

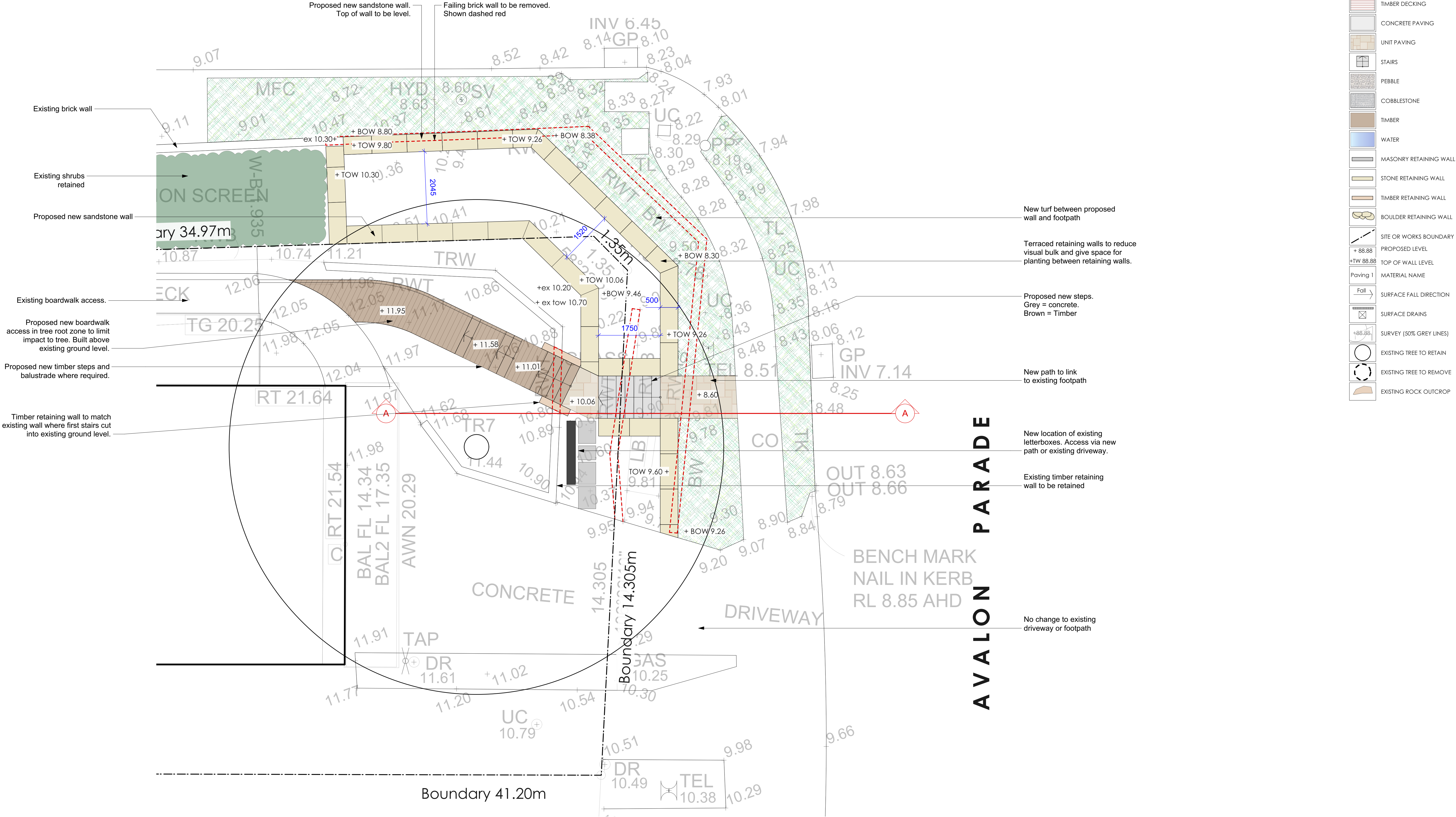
| | | | | | |
|---------|-----------------------------------|--|--|------------|-----------|
| PROJECT | No. 9 Avalon Parade, Avalon Beach | | | PROJECT # | 2039 |
| CLIENT | Strata committee | | | DATE # | See above |
| DWG | Landscape plan | | | SCALE @ A1 | See Plan |
| | | | | DRAWN | SA |
| | | | | CHKD | JK |
| | | | | REVISION | |

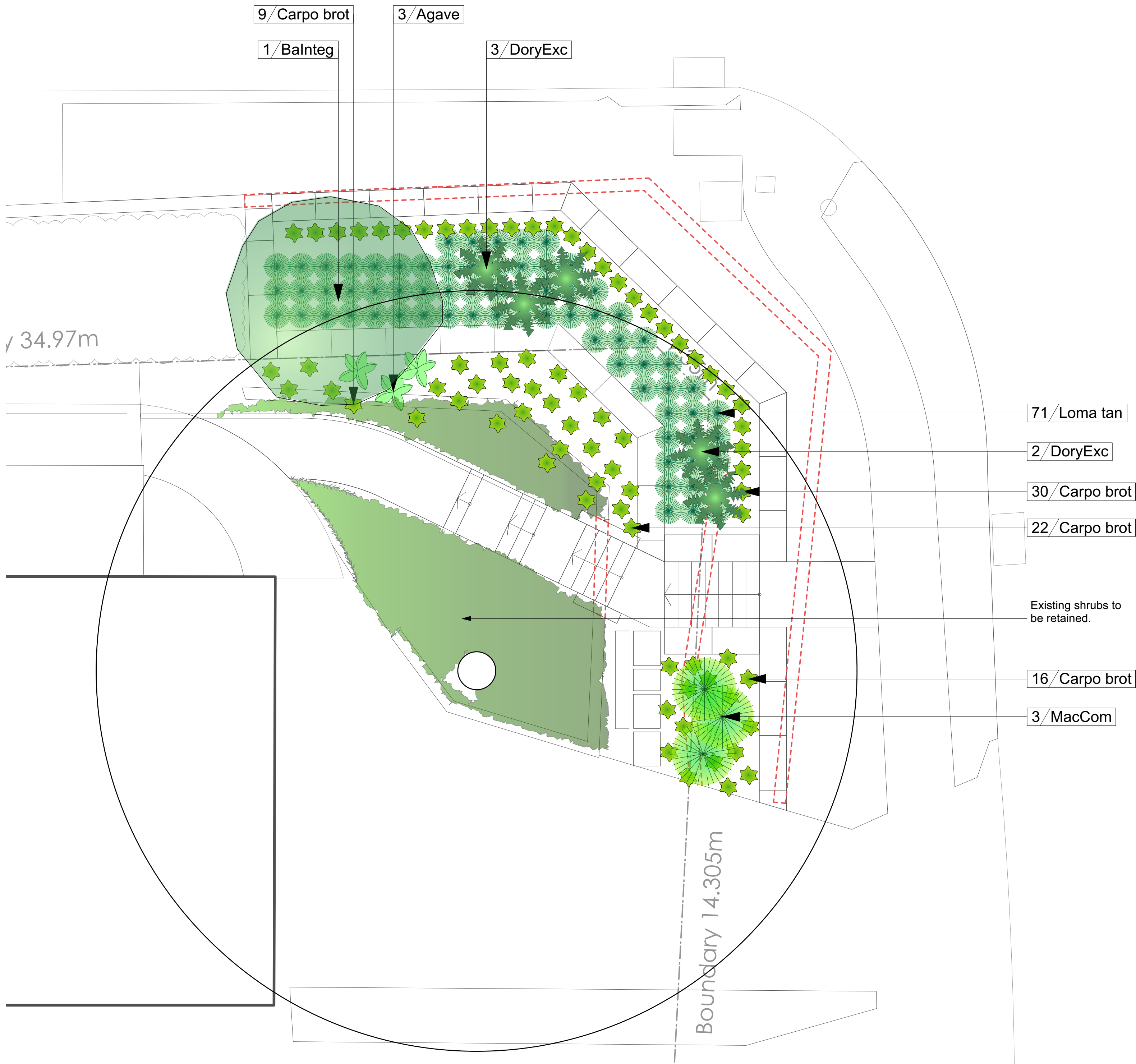
Jamie King Landscape Architect
84 Palmgrove Rd, Avalon, NSW, 2107
T: 0421 517 991
W: www.jamieking.com.au
E: jamie@jamieking.com.au



JAMIE KING
LANDSCAPE ARCHITECT
DESIGN • APPROVE • MANAGE

Detail plan
1:50@A1 1:100@A3. Do not scale off plan





Legend

- TURF AREA
- TIMBER DECKING
- CONCRETE PAVING
- UNIT PAVING
- STAIRS
- PEBBLE
- COBBLESTONE
- TIMBER
- WATER
- MASONRY RETAINING WALL
- STONE RETAINING WALL
- TIMBER RETAINING WALL
- BOULDER RETAINING WALL
- SITE OR WORKS BOUNDARY
- PROPOSED LEVEL
- TOP OF WALL LEVEL
- MATERIAL NAME
- SURFACE FALL DIRECTION
- SURFACE DRAINS
- SURVEY (50% GREY LINES)
- EXISTING TREE TO RETAIN
- EXISTING TREE TO REMOVE
- EXISTING ROCK OUTCROP

| ID | Quantity | Latin Name | Common Name | Scheduled Size | Mature Height | Mature Spread |
|------------|----------|------------------------------|---------------------------------------|----------------|---------------|---------------|
| | 6 | 160 | | 6 | 6 | 6 |
| Agave | 3 | Agave attenuata | Agave | 25lt | 0.6 - 0.75m | 0.0 - 0.3m |
| BalInteg | 1 | Banksia integrifolia | Coastal Banksia | 25lt | 8 - 12m | 3.5 - 6m |
| Carpo brot | 77 | Carpobrotus glaucescens | Coastal Moonflower, Pigface, Iceplant | Tube | 0.0 - 0.3m | 1.2 - 2.0m |
| DoryExc | 5 | Doryanthes excelsa | GyMEA Lily, Giant Lily | 25lt | 1.5 - 3m | 1.2 - 2.0m |
| Loma tan | 71 | Lomandra longifolia 'Tanika' | Spiny-headed mat rush | Tube | 0.45 - 0.6m | 0.6 - 0.9m |
| MacCom | 3 | Macrozamia communis | Burrawang | 200mm | 0.5 - 1m | 1m |

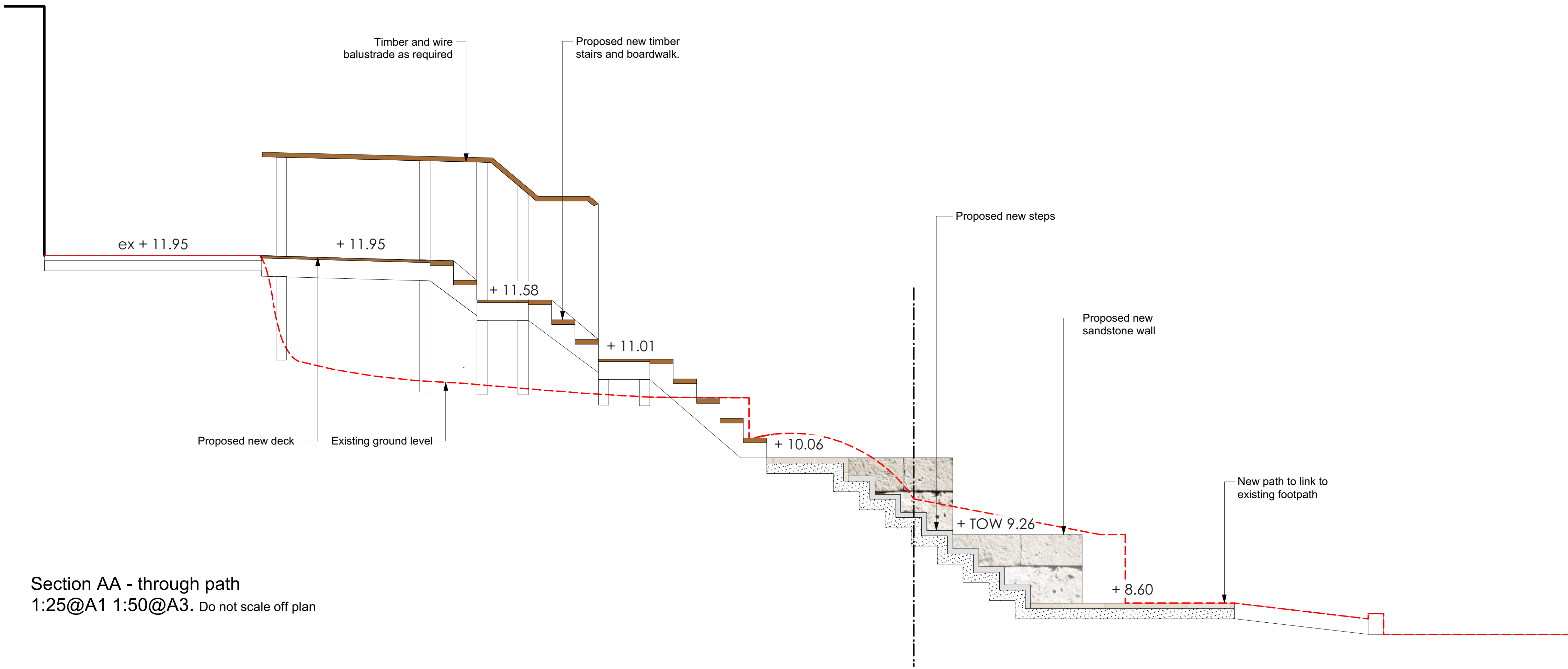


JAMIE KING
LANDSCAPE ARCHITECT
DESIGN • APPROVE • MANAGE

| | | |
|---|----------|------------------------|
| E | 11/11/21 | Issue E for DA |
| D | 12/11/20 | DA coordination |
| C | 19/02/20 | DA coordination |
| B | 05/02/20 | DRAFT issue for review |
| A | 09/12/19 | DRAFT issue for review |

Notes:
>Do not scale off plan.
>Contractors to check all measurements onsite before quoting or commencing work.
>If abnormalities arise, contact the Landscape Architect.
>This design is copyright and is not to be reproduced in anyway without written consent of Jamie King Landscape Architect

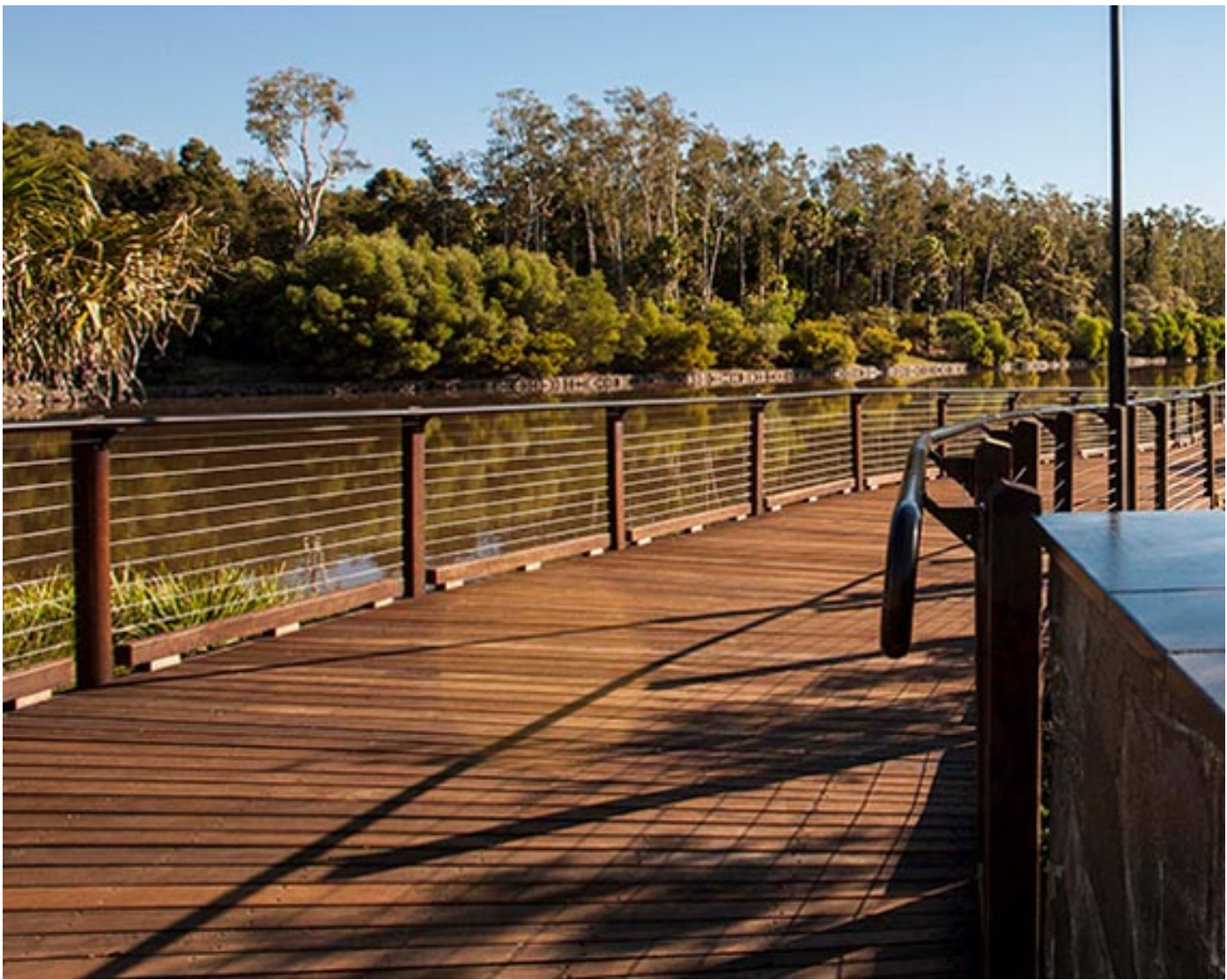
| ISSUE | DATE | REVISION | PROJECT # |
|---------|-----------------------------------|----------|------------------------------|
| PROJECT | No. 9 Avalon Parade, Avalon Beach | | 2039 |
| CLIENT | Strata committee | | DATE # See above DWG # |
| DWG | Planting plan | | SCALE @ A1 See Plan Sht-102a |
| | DRAWN SA | CHKD JK | REVISION |



Section AA - through path
1:25@A1 1:50@A3. Do not scale off plan



Sandstone log retaining wall



Timber boardwalk with posts and wire balustrade



Timber stairs

Notes:
>Do not scale off plan.
>Contractors to check all measurements onsite before quoting or commencing work.
>If abnormalities arise, contact the Landscape Architect.
>This design is copyright and is not to be reproduced in anyway without written consent of Jamie King Landscape Architect

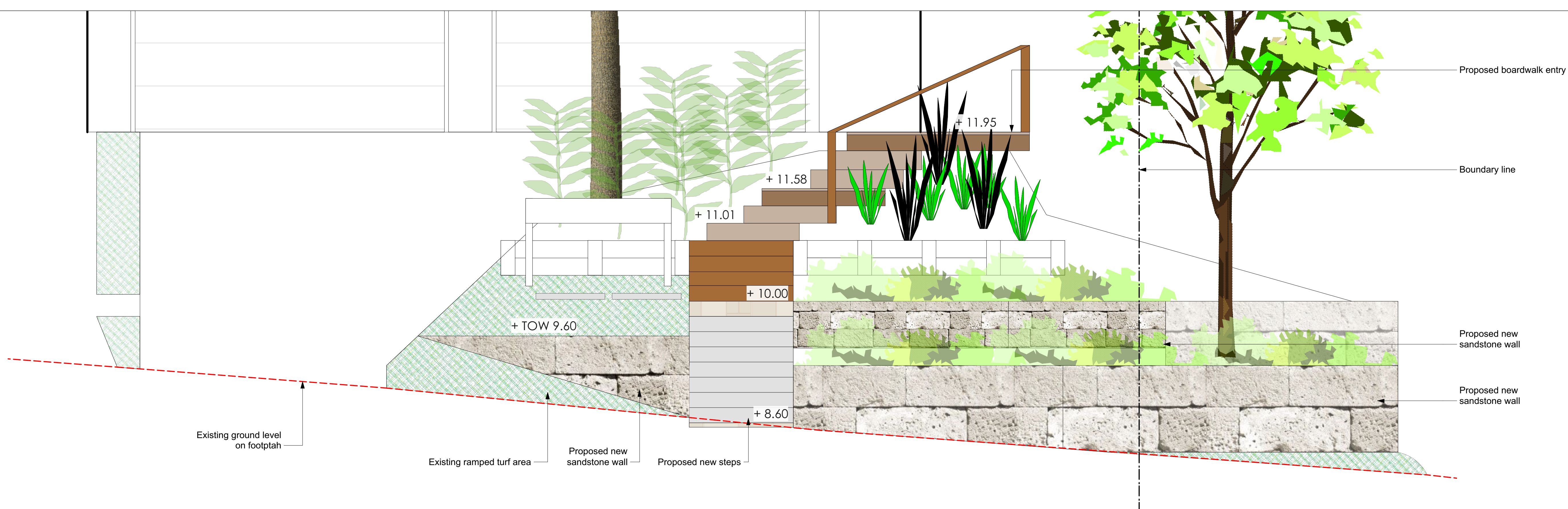
| | | |
|---|----------|------------------------|
| E | 11/11/21 | Issue E for DA |
| D | 12/11/20 | DA coordination |
| C | 19/02/20 | DA coordination |
| B | 05/02/20 | DRAFT issue for review |
| A | 09/12/19 | DRAFT issue for review |

| ISSUE | DATE | REVISION | PROJECT # |
|---------|-----------------------------------|---|-----------|
| PROJECT | No. 9 Avalon Parade, Avalon Beach | | 2039 |
| CLIENT | Strata committee | DATE # See above SCALE @ A1 See Plan | DWG # |
| DWG | Section | DRAWN SA CHKD JK | REVISION |

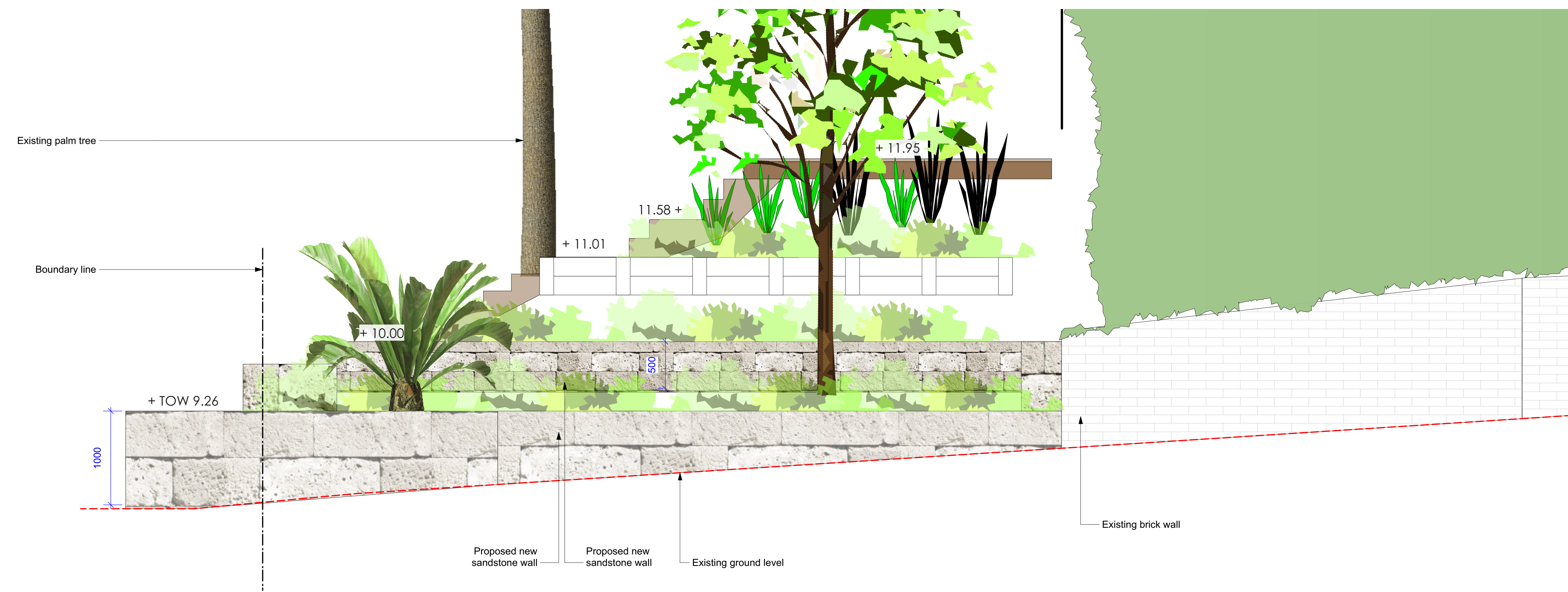
Jamie King Landscape Architect
84 Palmgrove Rd, Avalon, NSW, 2107
W: www.jamieking.com.au
T: 0421 517 991
E: jamie@jamieking.com.au



JAMIE KING
LANDSCAPE ARCHITECT
DESIGN ● APPROVE ● MANAGE



Northern Elevation
1:25@A1 1:50@A3. Do not scale off plan



Western Elevation
1:25@A1 1:50@A3. Do not scale off plan

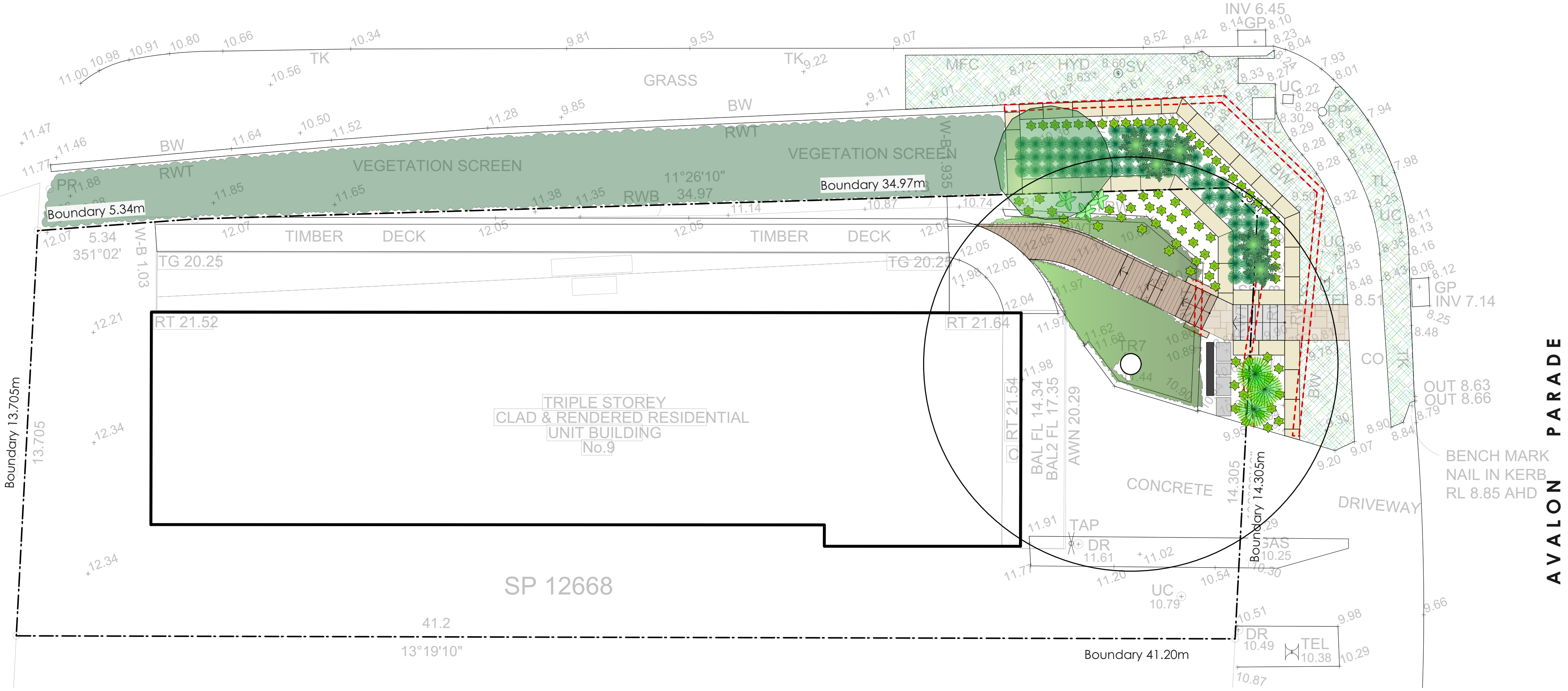


JAMIE KING
LANDSCAPE ARCHITECT
DESIGN • APPROVE • MANAGE

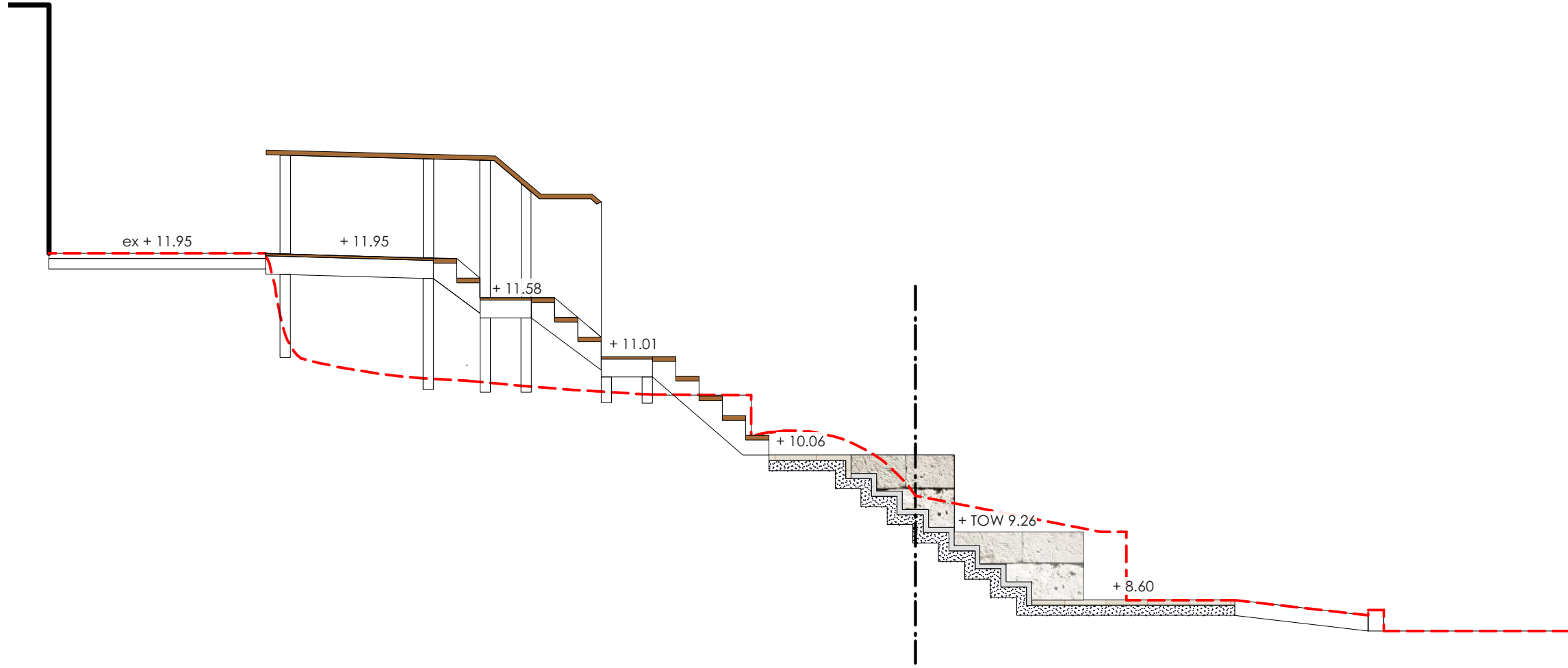
| | | | | | |
|------------------------------------|----------|------------------------|---|-----------|---------|
| | | | Notes: >Do not scale off plan. >Contractors to check all measurements onsite before quoting or commencing work. >If abnormalities arise, contact the Landscape Architect. >This design is copyright and is not to be reproduced in any way without written consent of Jamie King Landscape Architect | | |
| E | 11/11/21 | Issue E for DA | | | |
| D | 12/11/20 | DA coordination | | | |
| C | 09/02/20 | DA coordination | | | |
| B | 05/02/20 | DRAFT issue for review | | | |
| A | 09/12/19 | DRAFT issue for review | | | |
| ISSUE | | DATE | | REVISION | |
| PROJECT | | | PROJECT # | | |
| No. 9 Avalon Parade, Avalon Beach | | | 2039 | | |
| CLIENT | | | DATE # | See above | DWG # |
| Strata committee | | | SCALE @ A1 | See Plan | Sht-104 |
| DWG | | | DRAWN | SA | |
| Elevations | | | CHKD | JK | |
| | | | REVISION | | |
| Jamie King Landscape Architect | | | W: www.jamieking.com.au | | |
| 84 Palmgrove Rd, Avalon, NSW, 2107 | | | T: 0421 517 991 | | |
| | | | E: jamie@jamieking.com.au | | |

Notification plan
1:100@A1 1:200@A3. Do not scale off plan

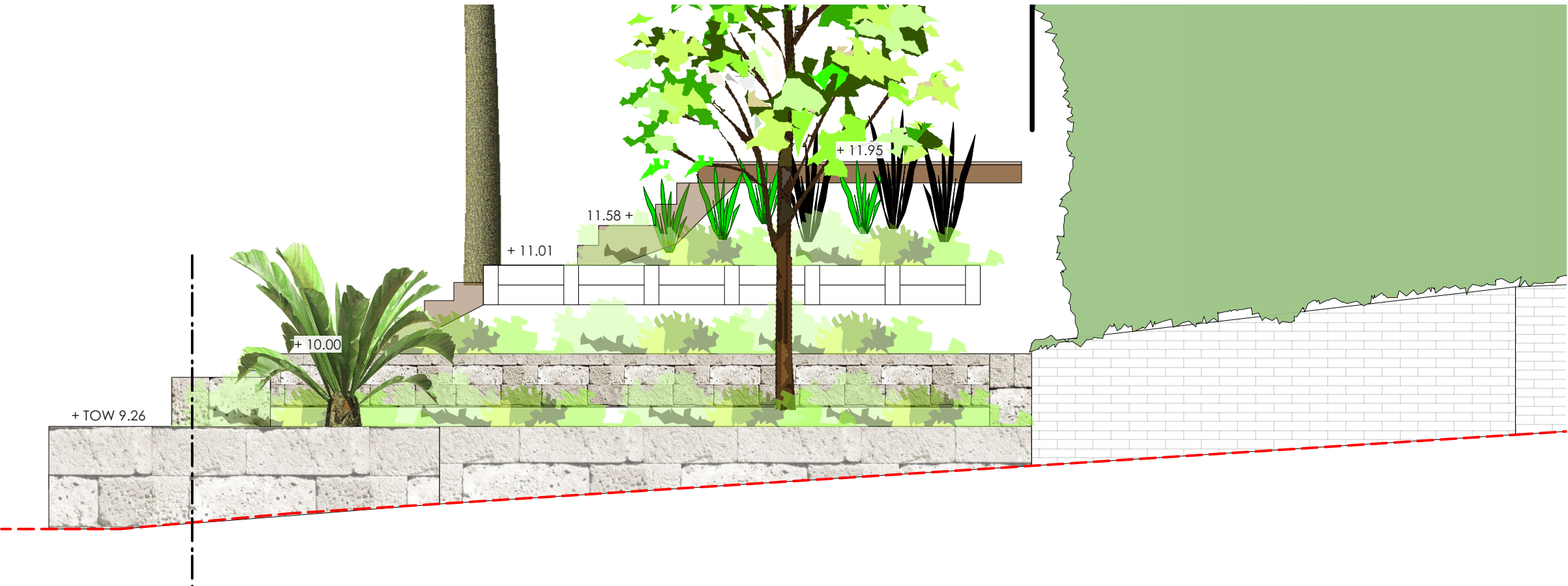
BARRENJOEY ROAD



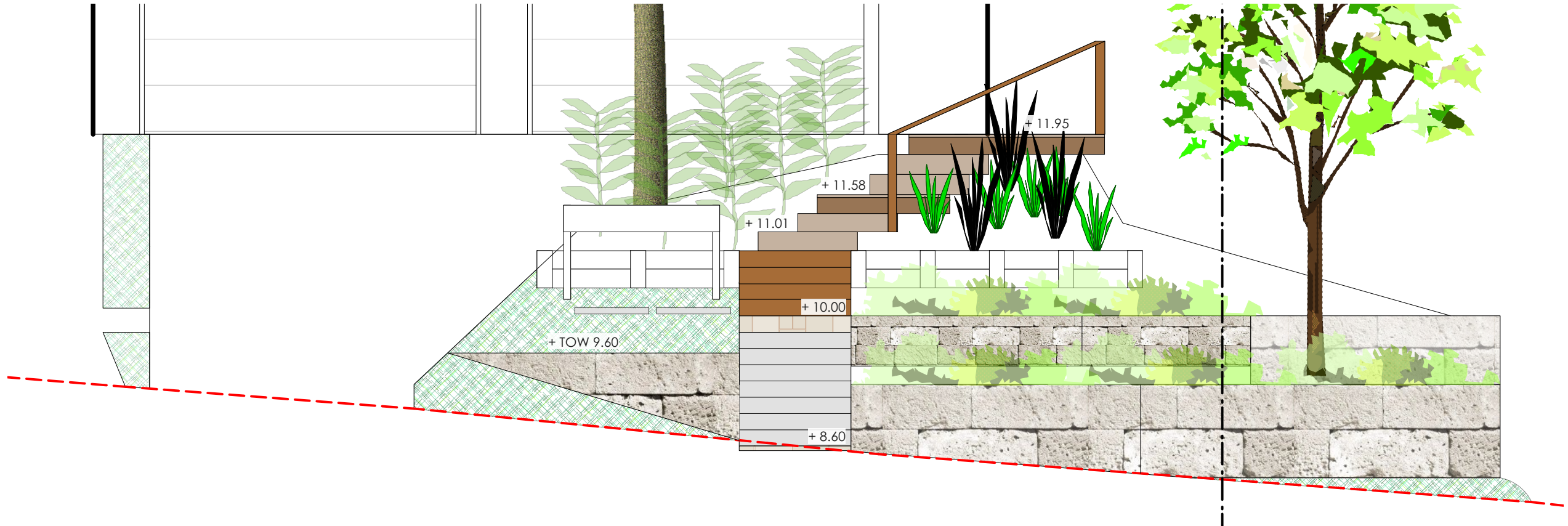
- Legend
- TURF AREA
 - TIMBER DECKING
 - CONCRETE PAVING
 - UNIT PAVING
 - STAIRS
 - PEBBLE
 - COBBLESTONE
 - TIMBER
 - WATER
 - MASONRY RETAINING WALL
 - STONE RETAINING WALL
 - TIMBER RETAINING WALL
 - BOULDER RETAINING WALL
 - SITE OR WORKS BOUNDARY
 - PROPOSED LEVEL
 - TOP OF WALL LEVEL
 - MATERIAL NAME
 - SURFACE FALL DIRECTION
 - SURFACE DRAINS
 - SURVEY (50% GREY LINES)
 - EXISTING TREE TO RETAIN
 - EXISTING TREE TO REMOVE
 - EXISTING ROCK OUTCROP



Section AA - through path
1:50@A1 1:100@A3. Do not scale off plan



Western Elevation
1:50@A1 1:100@A3. Do not scale off plan



Northern Elevation
1:50@A1 1:100@A3. Do not scale off plan



JAMIE KING
LANDSCAPE ARCHITECT
DESIGN • APPROVE • MANAGE

Notes:

- >Do not scale off plan.
- >Contractors to check all measurements onsite before quoting or commencing work.
- >If abnormalities arise, contact the Landscape Architect.
- >This design is copyright and is not to be reproduced in anyway without written consent of Jamie King Landscape Architect

| | | |
|---|----------|------------------------|
| E | 11/11/21 | Issue E for DA |
| D | 12/11/20 | DA coordination |
| C | 19/02/20 | DA coordination |
| B | 05/02/20 | DRAFT issue for review |
| A | 09/12/19 | DRAFT issue for review |

| | | | |
|----------|-----------------------------------|---------------------|-----------|
| ISSUE | DATE | REVISION | PROJECT # |
| PROJECT | No. 9 Avalon Parade, Avalon Beach | | 2039 |
| CLIENT | Strata committee | DATE # See above | DWG # |
| DWG | Notification plan | SCALE @ A1 See Plan | Sht-201 |
| DRAWN | SA | CHKD | JK |
| REVISION | | | |

Jamie King Landscape Architect
84 Palmgrove Rd, Avalon, NSW, 2107
T: 0421 517 991
W: www.jamieking.com.au
E: jamie@jamieking.com.au