

KEVIN AVENUE

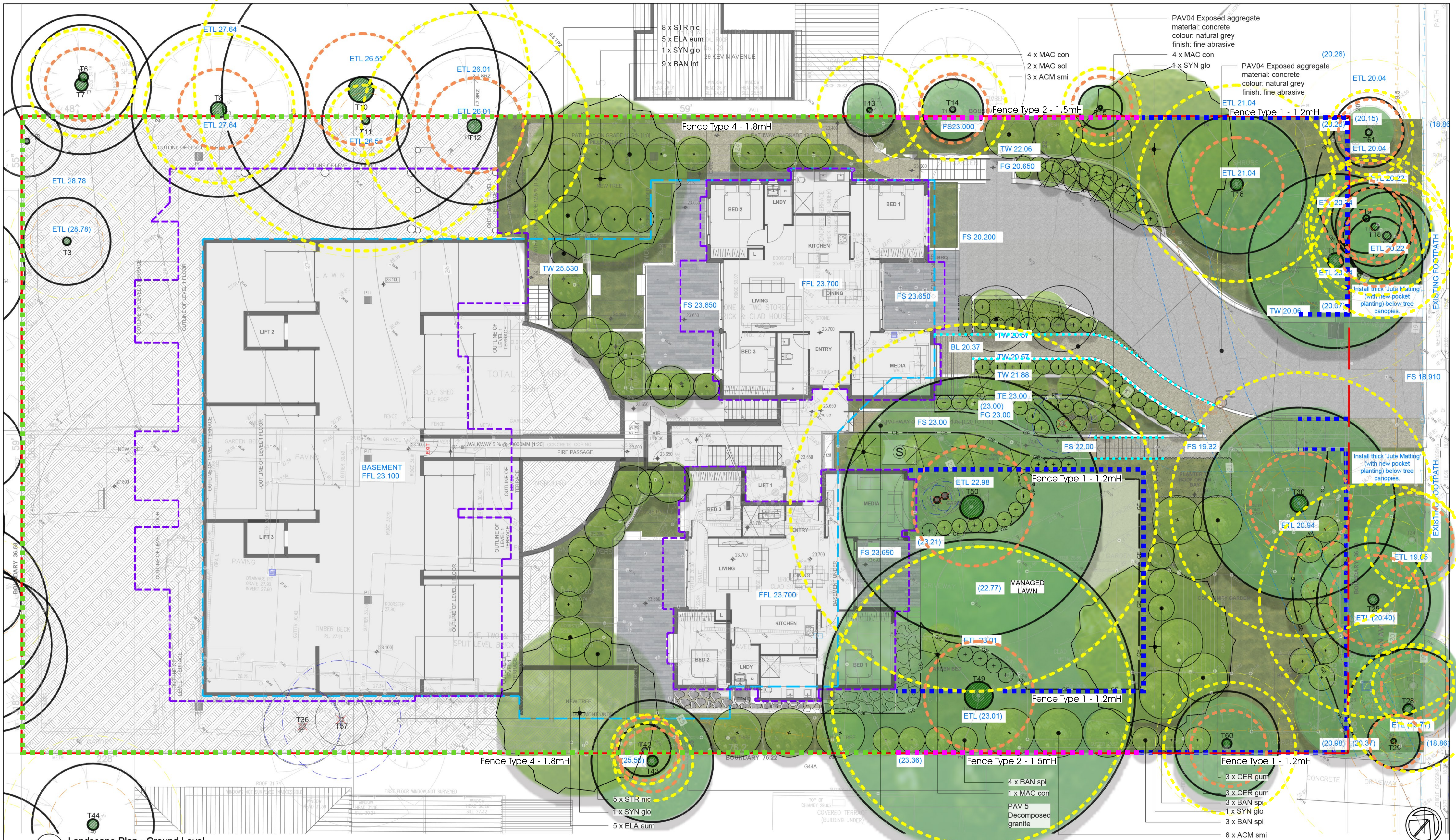
1 Overall Landscape Plan

Scale 1:200 @ A1

Plant Schedule					
Abbreviation	Botanical Name	Common Name	Mature Height (m)	Pot Size	Qty
Trees					
ACM smi	Acmena smithii	Lilly Pilly	0.5-0.6	45L	18
ANG cos	Angophora costata	Sydney red gum	15-25	75L	2
BAC myr	Backhousia myrtifolia	Cinnamon myrtle	3	45L	6
BAN int	Banksia integrifolia	Costal Banksia	8-10	45L	3
BAN spi	Banksia spinulosa	Hairpin Banksia	1-3	45L	9
CER gum	Ceratopetalum gummiferum	NSW Christmas Bush	5	35L	6
ELA gum	Elaeocarpus Eumundii	Eumundi quandong	5-10	200L	10
GLO fer	Glochidion ferdinandi	Cheese Tree	20	400L	1
LIV aus (1.0M)	Livistona australis	Cabbage-Tree Palm	25-30	1m clear stem	5
LIV aus (2.0M)	Livistona australis	Cabbage-Tree Palm	25-30	2m clear stem	2
LIV aus (4.0M)	Livistona australis	Cabbage-Tree Palm	25-30	4m clear stem	2
MAG sou	Magnolia soulangiana	Deciduous Magnolia	8-12	200L	2
SYN glo	Syncarpia glomulifera	Turpentine tree	30-35	100L	6
Shrubs					
ABR orn	Abrophyllum ornans	Native hydrangea	3-8	200mm	25
ACA str	Acacia stricta	Straight wattle	1-5	200mm	15
BAE imb	Baeckea imbricata	Heath myrtle	1	200mm	15
BLA nob	Blandfordia nobilis	Christmas bell	0.4	200mm	15
COR alb	Correa alba	White correa	1.5	300mm	85
DOR exc (25)	Doryanthes excelsa	Gynea lily	2-4	25L	55
DOR exc (45)	Doryanthes excelsa	Gynea lily	2-4	45L	25
DOR exc (75)	Doryanthes excelsa	Gynea lily	2-4	75L	15
EPA lon	Epacris longiflora	Fuchsia heath	0.5-2	200mm	55
ERI bux	Eriostemon buxifolius	Box-leaf waxflower	0.3-0.6	200mm	35
ERI aus	Eriostemon australis	Pink wax flower	2	300mm	65
GRE lin	Grevillea linearifolia	White spider flower	1-2	300mm	25
HIB emp	Hibbertia empetrifolia	Trailing Guinea-flower	1-2	200mm	85
JAC sco	Jacksonia scoparia	Dogwood	5	200mm	25
KUN amb	Kunzea ambigua	Poverty bush	5	200mm	15
LEU par	Leucopogon parviflorus	Costal beard-heath	1-5	200mm	15
MEL hyp	Melaleuca hypericifolia	Hillock bush	6	200mm	5
MEL thy	Melaleuca thymifolia	Thyme scented melaleuca	1.0-1.5	140mm	5
NOT lon	Notelaea longifolia	Long-leaved-olive	3	200mm	15
OLE tom	Olearia tomentosa	Toothed paper daisy	1.5-2.0	140mm	35
PAN pan	Pandorea pandorana	Wonga wonga vine	6	140mm	55
PEL aus	Pelargonium australe	Austral Storks	0.5	140mm	35
PRO ova	Prostanthera ovifolia	Mint Bush	1.5-5	140mm	35
SYZ ole	Syzygium oleosum	Blue Lilly Pilly	7	300mm	15
SYZ pan	Syzygium paniculatum	Magenta Lilly Pilly	15	300mm	15
TEL spe	Telopea speciosissima	Waratah	3	300mm	7
WES fru	Westringia fruticosa	Costal Rosemary	3	300mm	15
Accents					
MAC com	Macrozamia communis	Burrawang	2-3	45L	15
PAT ser	Patersonia sericea	Purple flag	0.6	300mm	15
PER lev	Persoonia levis	Broad-leaved geebung	5	300mm	15
XAN sp	Xanthorrhoea sp.	Grass Tree	2-6	45L	10
XAN arb	Xanthorrhoea arborea	Broadleaf grass-tree	0.6	35L	30
Ferns					
ADI aet	Adiantum aethiopicum	Common maidenhair	0.45	100mm	150
BLE nud	Blechnum nudum	Water fern	0.5-1	200mm	75
CYA aus (1M)	Cyathea australis	The rough tree fern	10-15	1m clear stem	10
CYA aus (2M)	Cyathea australis	The rough tree fern	10-15	2m clear stem	10
Grasses & Groundcovers (3 plants per 1m2)					
CAR gla	Carpobrotus glaucescens	Pig Face	0.2	Tube	325
DIA cae	Dianella caerulea 'producta'	Paroo Lily	0.4	V/Cell	325
DOO asp	Doodia aspera	Pickly Rasp Fern	0.5	140mm	325
GAH asp	Ghania aspera	Rough saw sedge	1-1-05	V/Cell	325
GER hom	Geranium homeanum	Native geranium	0.7	100mm	325
LOM mul	Lomandra multiflora	Many flowered Lomandra	0.5	V/Cell	325
LOM obl	Lomandra obliqua	Fish bones	0.1	V/Cell	325
MYO ins	Myoporum insulare	Boobialla	0.2-6	140mm	325
POA aff	Poa affinis	Native poa grass	0.4-1.2	140mm	325

LEGEND GENERAL PROPERTY BOUNDARY BASEMENT OUTLINE ROOF OUTLINE		TREE RETENTION, REMOVAL AND PRUNING EXISTING TREES - TO BE RETAINED & PROTECTED (as per Tree Protection Zone AS4907) EXISTING TREES - TO BE REMOVED		MATERIALS, FINISHES & FURNITURE GARDEN EDGE SCULPTURE (Garden Ornament) WALLING TYPE 1 - Saw cut sandstone cladding (dry stacked jointing) WALLING TYPE 2 - Metal cladding / Corten Steel (Planters)		PAVING TYPE 1 - Unit Pavers PAVING TYPE 2 - Stepping stones PAVING TYPE 3 - Artificial Turf PAVING TYPE 4 - Exposed aggregate PAVING TYPE 5 - Decomposed granite BALUSTRADE TYPE 1 FENCE TYPE 1 - Privacy Screen (Open) 1.2mH FENCE TYPE 2 - Privacy Screen (Open) 1.5mH		FENCE TYPE 3 - Privacy Screen (Open) 1.8mH FENCE TYPE 4 - Privacy Screen (Semi closed) 1.8mH MANAGED LAWN MASS PLANTING		PROJECT NEW SENIORS LIVING DEVELOPMENT 25-27 KEVIN AVENUE, AVALON BEACH, NSW 2107 LANDSCAPE ARCHITECT L1/13 10 Park Street Mone Vale, NSW 2103 Phone: 61 2 8411 2734 4/5 Jubilee Avenue, Warriewood, NSW Australia www.symstudio.com		DRAWING TITLE Overall Landscape Plan APPROVED FOR RELEASE AILA #1420 DATE: 02/07/24 DRAWN: DF CHECKED: CG PROJECT NO.: GTR03 DRAWING NO.: GTR03-DA-100 ISSUE: B	
--	--	--	--	---	--	---	--	--	--	--	--	---	--

COPYRIGHT OF DESIGN SHOWN HERE IS RETAINED AND AUTHORITY FOR ANY REPRODUCTION, IF IN DOUBT ASK. FOLLOW WRITTEN DIMENSIONS ONLY. DO NOT SCALE OFF DRAWINGS. DO NOT KEEP SUPERSEDED DRAWINGS ON SITE.



1 Landscape Plan - Ground Level

Scale 1:100 @ A1

LEGEND

GENERAL

- PROPERTY BOUNDARY
- BASEMENT OUTLINE
- ROOF OUTLINE

TREE RETENTION, REMOVAL AND PRUNING

- EXISTING TREES - TO BE RETAINED & PROTECTED (as per Tree Protection Zone AS4907)
- EXISTING TREES - TO BE REMOVED

MATERIALS, FINISHES & FURNITURE

- GARDEN EDGE
- SCULPTURE (Garden Ornament)
- WALLING TYPE 1 - Saw cut sandstone cladding (dry stacked jointing)
- WALLING TYPE 2 - Metal cladding (Corten Steel, Planters)

- PAV1 - PAVING TYPE 1 - Unit Pavers
- PAV2 - PAVING TYPE 2 - Stepping stones
- PAV3 - PAVING TYPE 3 - Artificial Turf
- PAV4 - PAVING TYPE 4 - Exposed aggregate

- PAV5 - PAVING TYPE 5 - Decomposed granite
- BAL - BALUSTRADE TYPE 1
- FENCE TYPE 1 - Privacy Screen (Open) 1.2mH
- FENCE TYPE 2 - Privacy Screen (Open) 1.5mH

- FENCE TYPE 3 - Privacy Screen (Open) 1.8mH
- FENCE TYPE 4 - Privacy Screen (Semi closed) 1.8mH
- L - MANAGED LAWN
- M - MASS PLANTING

PROJECT: NEW SENIORS LIVING DEVELOPMENT
25-27 KEVIN AVENUE, AVALON BEACH, NSW 2107

DRAWING TITLE: Landscape Plan (1 of 2) - Ground Level

APPROVED FOR RELEASE: AILA #1420

DATE: 02/07/24 DRAWN: DF CHECKED: CG

PROJECT No: GTR03 DRAWING No: GTR03-DA-101 ISSUE: C

LANDSCAPE ARCHITECT: sym. studio
Phone: 61 2 8411 2734
45/6 Jubilee Avenue, Warriewood, NSW Australia www.symstudio.com.au

DATE	ISSUE	AMENDMENT	BY
02/07/2024	C	DEVELOPMENT APPLICATION	DF
30/10/2023	B	DEVELOPMENT APPLICATION	DF
20/10/2023	A	DEVELOPMENT APPLICATION	DF
12/10/2023	P1	DEVELOPMENT APPLICATION	DF

Copyright of design shown here is retained and authority for any reproduction, if in doubt ask. FOLLOW WRITTEN DIMENSIONS ONLY. DO NOT SCALE OFF DRAWINGS. DO NOT KEEP SUPERSEDED DRAWINGS ON SITE.

