

1854 | STEYNE HOTEL, MANLY

Figure 3.1

1860

Steyne Hotel

State Library  
Victoria



Figure 3.2

1910

Steyne Hotel

hotelsteyne.com.au



Figure 3.3 | 1913 | Steyne Hotel, alterations and additions | State Records NSW



Figure 3.4 | 1926 | Steyne Hotel, Lot boundaries | LTO Vol.3929 Folio

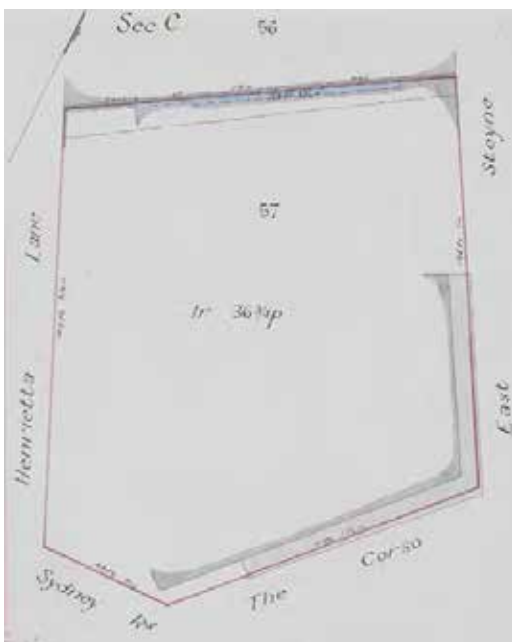


Figure 3.5      1935      Steyne Hotel, Ground Floor

State Records 71109

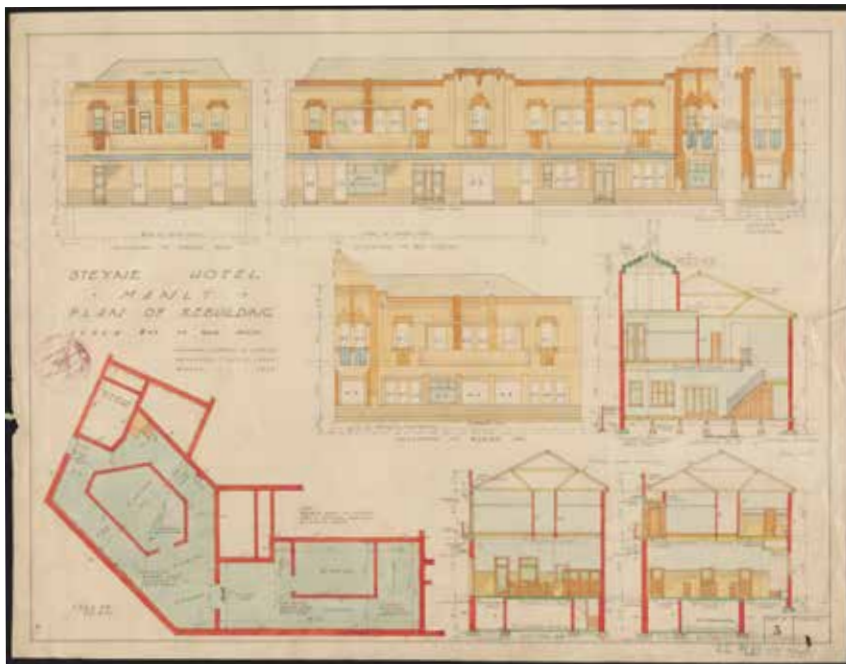


Figure 3.6      1935      Steyne Hotel, Ground Floor

State Records  
71111



Figure 3.7 1939 Steyne Hotel, 1st Floor Section

State Records  
71110

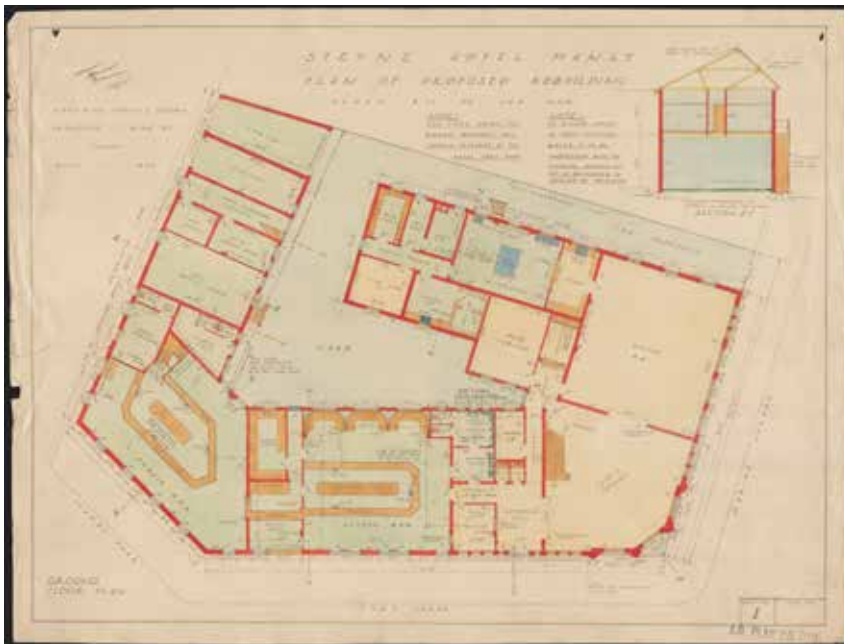


Figure 3.8 1939 Steyne Hotel, New Stair

State Records  
71112

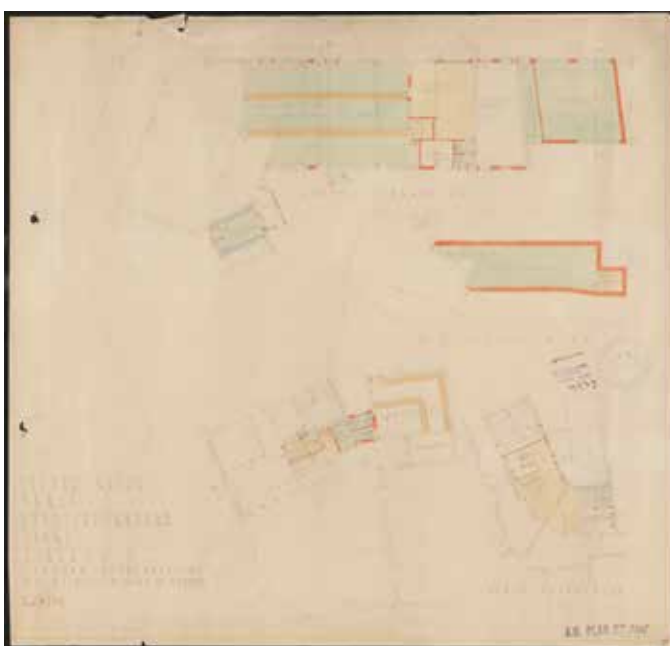


Figure 3.9 1939 Steyne Hotel, Sections

State Records  
71113

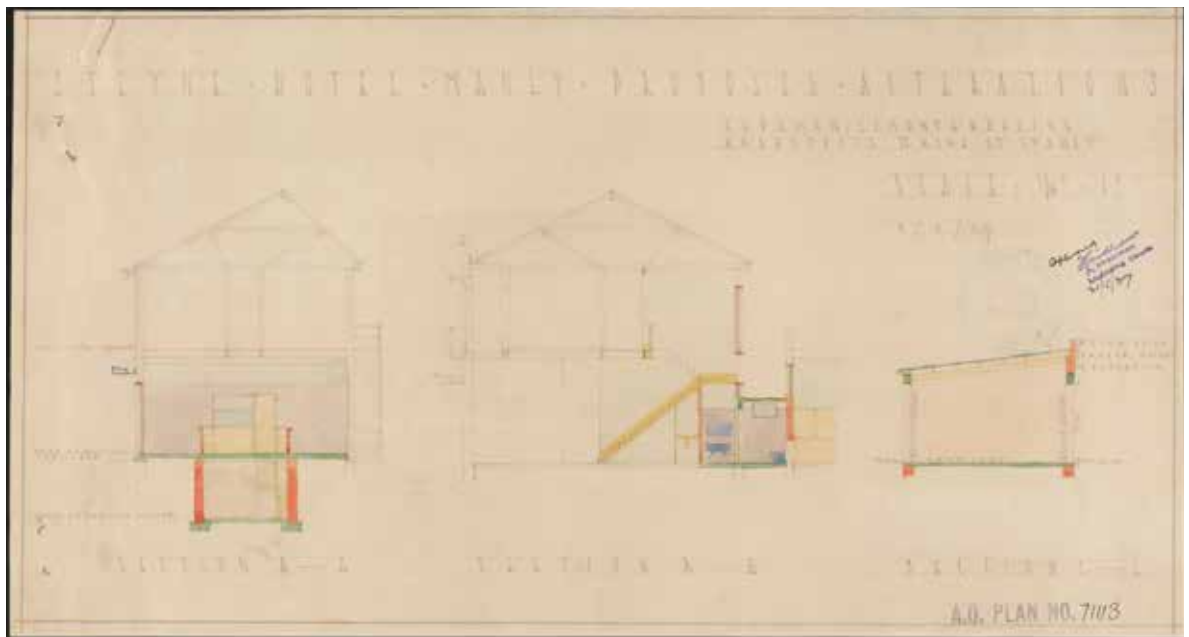


Figure 3.10 1939 Steyne Hotel, Dining Room Extensions

State Records  
71114

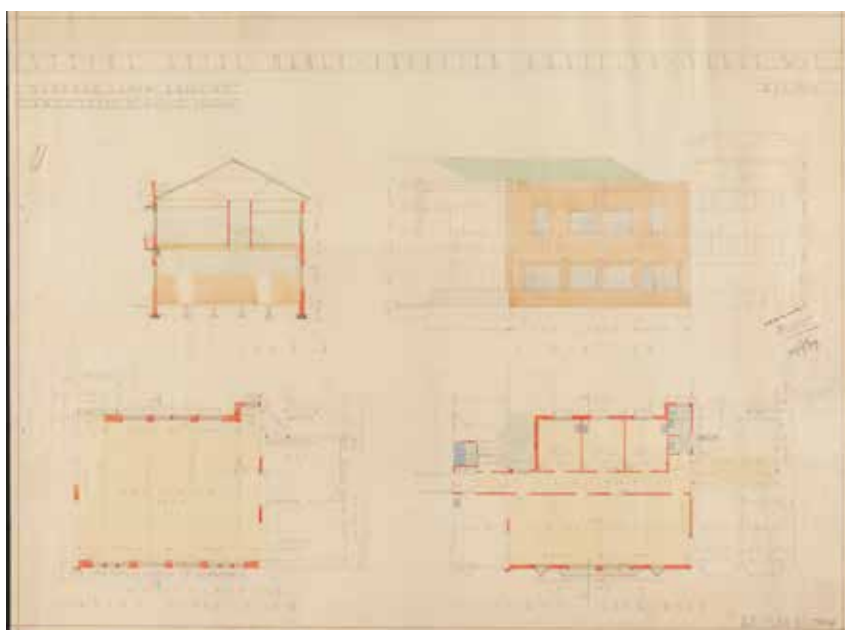




Figure 3.11      1939      Steyne Hotel, Kitchen and Dining Room Extensions      State Records

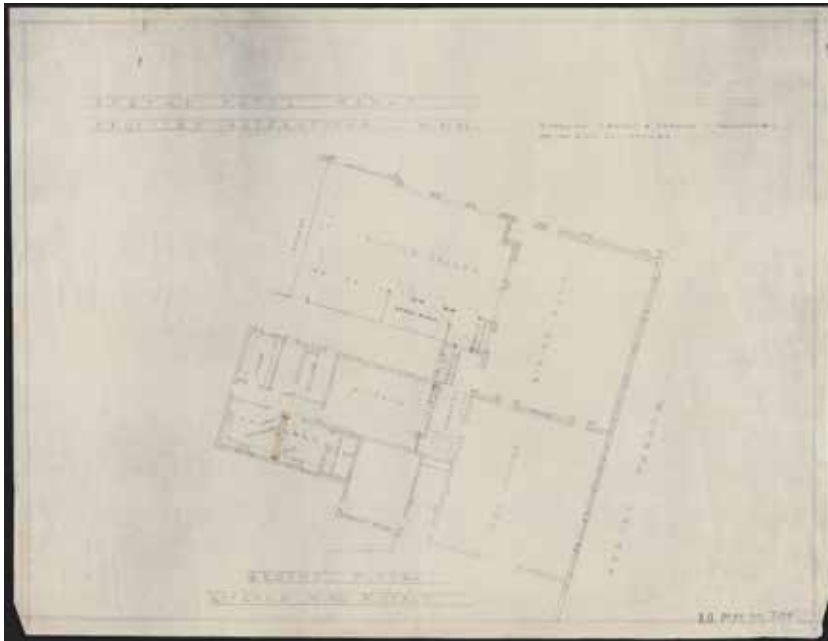


Figure 3.12      1936      Steyne Hotel, Exterior      Decoration & Glass Magazine, National Library Archive



Figure 3.13      1936      Steyne Hotel, Exterior

State Records  
71109



Figure 3.14      1936      Steyne Hotel, Exterior

Noel Butlin  
Archive Collection



Figure 3.15      1936      Steyne Hotel, Exterior Corner Tower

Building Magazine, National  
Library Archive



Figure 3.16      1936      Steyne Hotel, Exterior

Building Magazine,  
National Library Archive





Figure 3.17      1936      Steyne Hotel, Public Bar

Noel Butlin Archive Collection



Figure 3.18      1936      Steyne Hotel Cocktail Lounge

Noel Butlin Archive Collection



Figure 3.19      1936      Steyne Hotel, Cocktail Lounge

Building Magazine, National  
Library Archive



Figure 3.20      1936      Steyne Hotel, Dining Room

Building Magazine, National  
Library Archive



Figure 3.21      1936      Steyne Hotel, Dining Room

Noel Butlin Archive  
Collection



Figure 3.22      1936      Steyne Hotel, Saloon Bar

Building Magazine,  
National Library Archive





Figure 3.23      1936      Steyne Hotel, Saloon Bar

Building Magazine, National  
Library Archive



Figure 3.24      1936      Steyne Hotel, Saloon Bar

Building Magazine, National  
Library Archive



Figure 3.25      1936      Steyne Hotel, Sitting Room      Noel Butlin Archive Collection



Figure 3.26      1936      Steyne Hotel, Sitting Room      Building Magazine, National Library Archive





Figure 3.27      1936      Steyne Hotel, Bedroom

Decoration & Glass Magazine,  
National Library Archive



Figure 3.28      1936      Steyne Hotel, Bedroom

Noel Butlin Archive Collection



Figure 3.29      19      Steyne Hotel,



Figure 3.30      1930      Steyne Hotel, Exterior      Noel Butlin Archive Collection



Figure 3.31      1949      Steyne Hotel, Exterior      Noel Butlin Archive Collection



Figure 3.32      1949      Steyne Hotel, Exterior      Noel Butlin Archive Collection



Figure 3.33      1949      Steyne Hotel, Exterior      Noel Butlin Archive Collection



Figure 3.34      1949      Steyne Hotel, Exterior





Figure 3.35

2002

Steyne Hotel, Saloon Bar Tile Work

Archival Record



Figure 3.6

2002

Steyne Hotel, Saloon Bar Tile Work

Archival Record

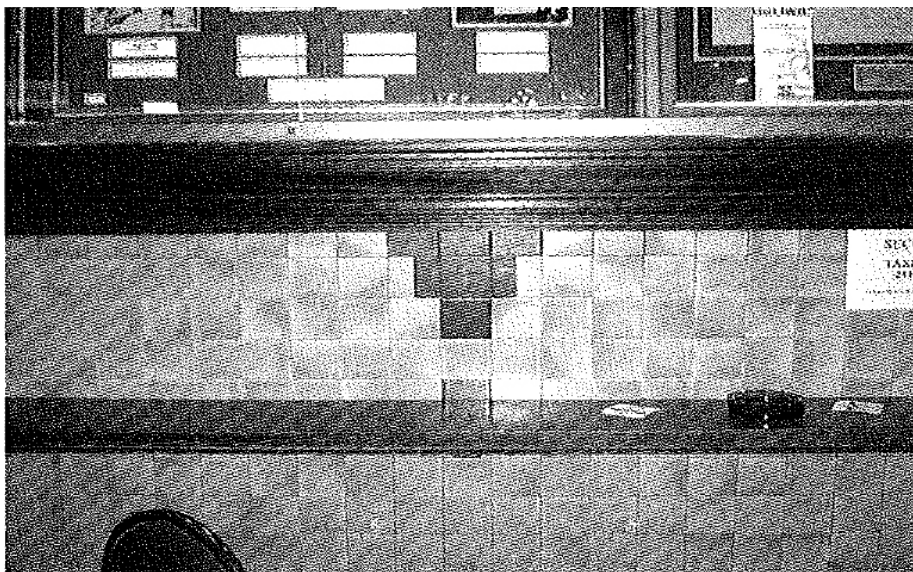




Figure 3.37

2002

Steyne Hotel, Reception Desk

Archival Record

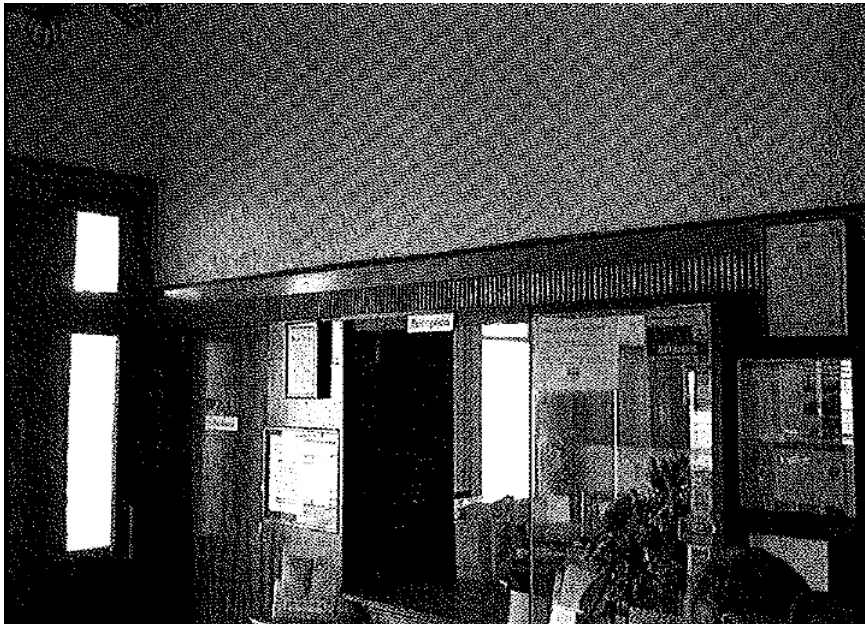


Figure 3.38

2002

Steyne Hotel, Bottle Shop Ceiling

Archival Record



Figure 3.39

2002

Steyne Hotel, Timber Stair

Archival Record

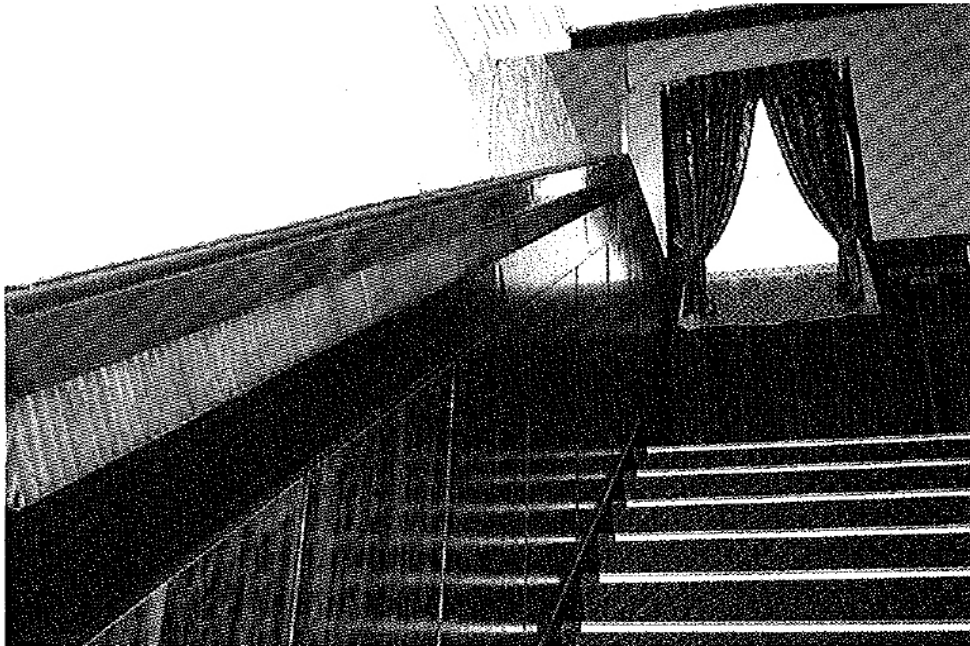


Figure 3.40

2002

Steyne Hotel, Stair, Timber Detail

Archival Record

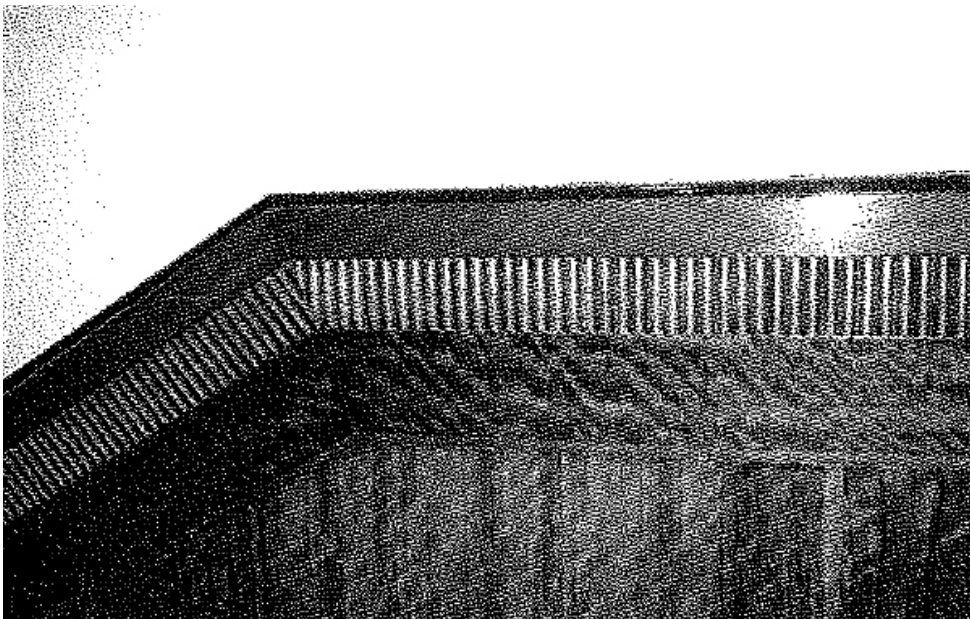


Figure 3.41

2002

Steyne Hotel, Entry Stair Cornice Detail

Archival Record

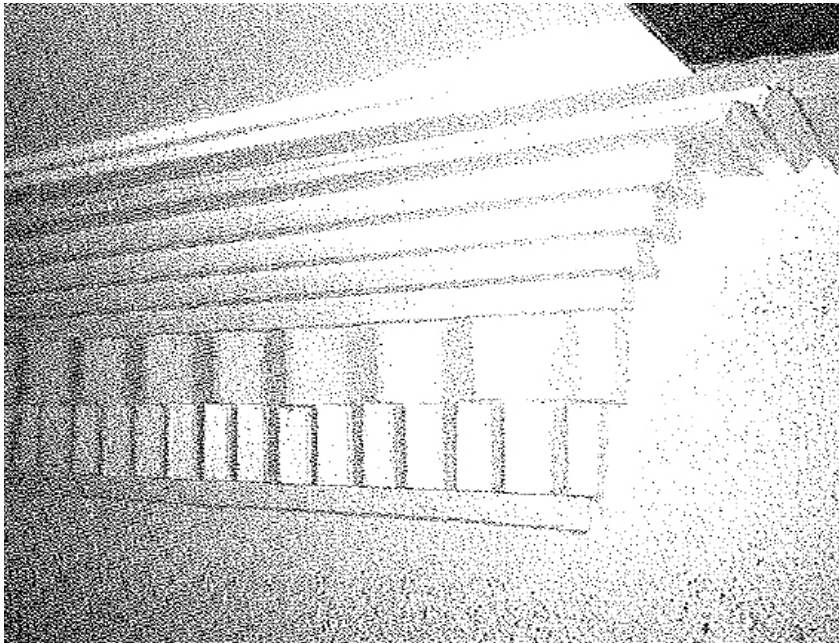


Figure 4.1      2018      Hotel Steyne, south elevation (to The Corso)

Architectural  
Projects



Figure 4.2      2018      Hotel Steyne, south elevation (To Whistler Street)

Architectural  
Projects





Figure 4.3      2018      Hotel Steyne, west elevation (To Henrietta Lane)

Architectural  
Projects



Figure 4.4      2018      Hotel Steyne, east elevation (to North Steyne)

Architectural  
Projects





Figure 4.5

2018

Existing Beer Garden south, view of exterior to Saloon Bar

Architectural  
Projects



Figure 4.6

2018

Existing Courtyard stair and west elevation to centre wing

Architectural  
Projects



Figure 4.7

2018

Existing Sports Bar in area of new Stair 4 - view to north

Architectural  
Projects



Figure 4.8

2018

Existing Beer Garden (north) and courtyard from second floor - view to south

Architectural  
Projects



Figure 4.9      2018      Existing Beer Garden (north) and bar - view to south

Architectural  
Projects



Figure 4.10      2018      Beer Garden (north) view to north. Former 41 North Steyne in background

Architectural  
Projects





Figure 4.11

2018

Existing bridge walkway and Stair 4 above courtyard at first floor level - view to east

Architectural  
Projects



Figure 4.12

2018

Existing Courtyard (north) at first floor level - view to north

Architectural  
Projects



Figure 4.13      2018      Existing north terrace to centre wing at first floor level

Architectural  
Projects



Figure 4.14      2018      View of existing lift No.2 from exterior of Saloon Bar

Architectural  
Projects





Figure 4.15      2018      Existing external courtyard and stair - view to north

Architectural  
Projects



Figure 4.16      2018      Existing Hotel Room 01

Architectural  
Projects



Figure 4.17      2018      Existing Hotel Room 05

Architectural  
Projects



Figure 4.18      2018      Hotel accommodation corridor to east wing at first floor level

Architectural  
Projects



Figure 4.19

2018

Existing hotel accommodation corridor to centre wing  
at first floor level

Architectural  
Projects



Figure 4.20

2018

Existing Hotel Room 12A

Architectural  
Projects



Figure 4.21      2018      Existing Hotel Room 13

Architectural  
Projects



Figure 4.22      2018      Existing Hotel Room 14

Architectural  
Projects





Figure 4.23      2018      Bath to existing Hotel Room 14

Architectural  
Projects



Figure 4.24      2018      Existing Hotel Room 17

Architectural  
Projects



Figure 4.25      2018      Existing Hotel Room 23

Architectural  
Projects



Figure 4.26      2018      Existing hotel room used as office - centre wing

Architectural  
Projects



Figure 4.27

2018

Existing verandah to administration offices at first floor level

Architectural  
Projects



Figure 4.28

2018

Existing administration offices at first floor

Architectural  
Projects



Figure 4.29      2018      Existing hotel room used as workshop - centre wing

Architectural  
Projects

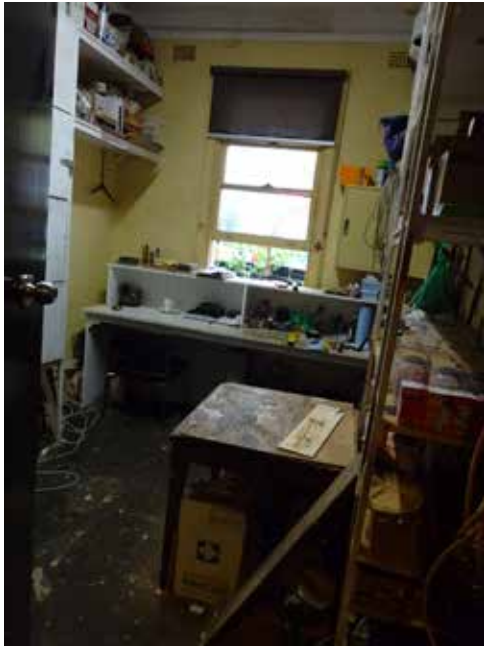


Figure 4.30      2018      Existing hotel accommodation reception - first floor

Architectural  
Projects





Figure 4.31      2018      Existing Blacket's Bar, second floor

Architectural  
Projects



Figure 4.32      2018      Existing Blacket's Bar, second floor

Architectural  
Projects

