

Item 1

Main ID Sign

**Construction Method:**

- Fabricated 100 × 100 × 3mm Aluminium SHS frame powdercoated white
- 3mm white ACM face panels front and rear
- Digital print and computer cut vinyl graphics

Installation:

- Mechanically fixed to Concrete footing via 4x M16 Chemset Rods

Client:

PICA Group

Project:

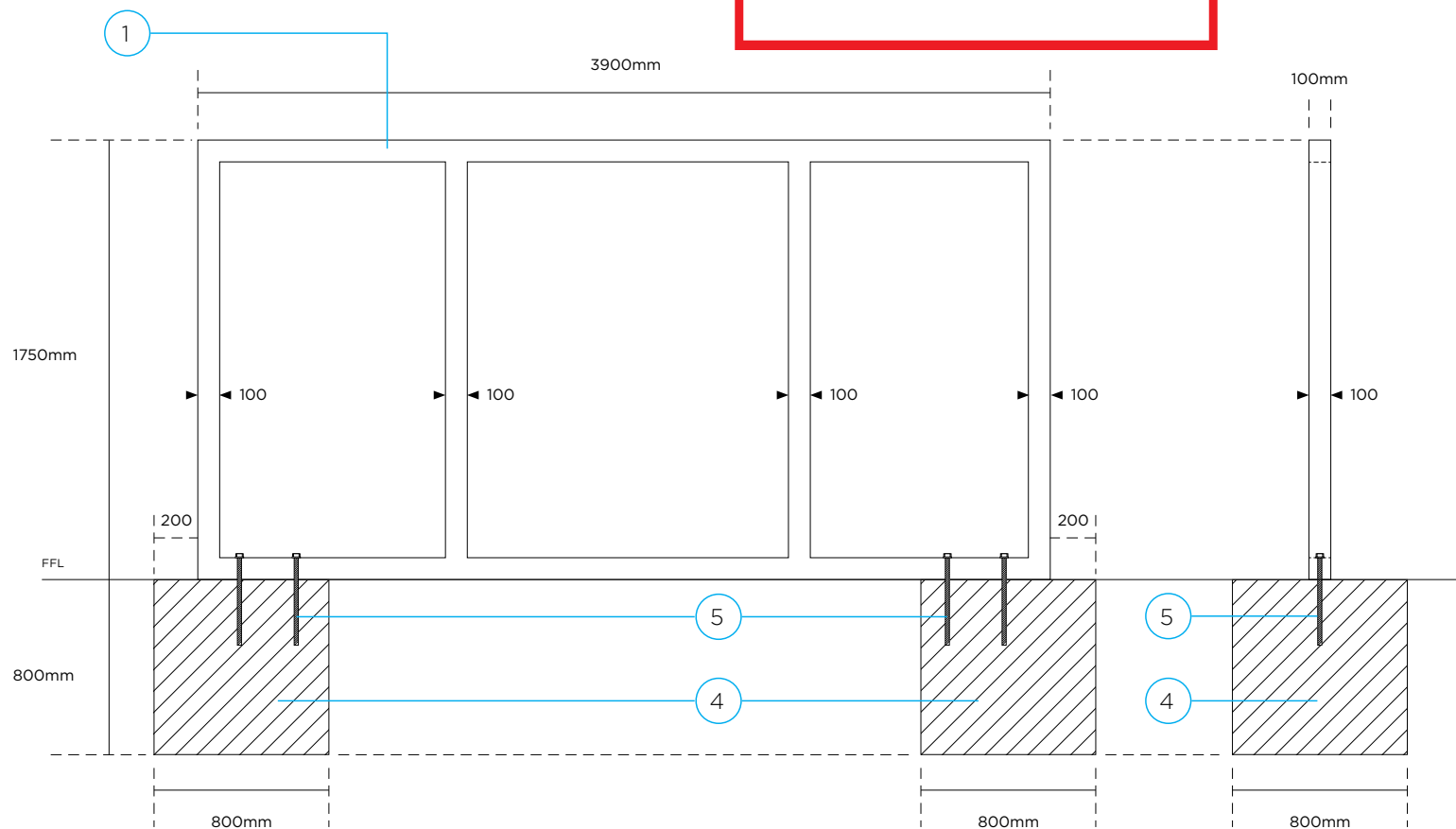
BCS – Frenchs Forest Main ID Sign

Date:

3rd February 2021

Issue: 8

Main ID Sign Construction Detail Frame and Footing



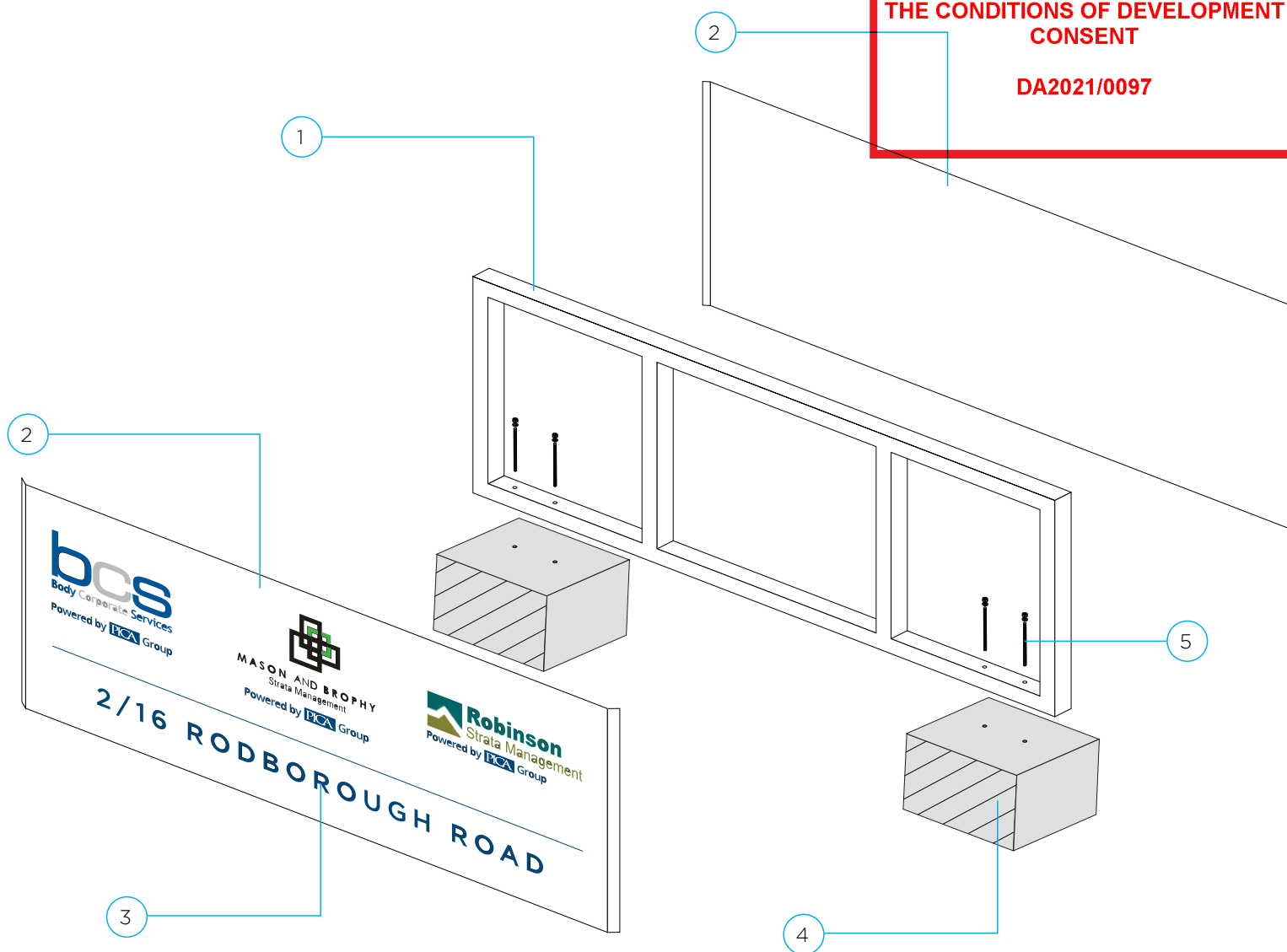
1. Fabricated 100 × 100 × 3mm Aluminium SHS frame powdercoated white
2. 3mm white ACM face panels front and rear
3. Digital print and computer cut vinyl graphics
4. Concrete footing to engineers approval
5. M16 Chemset rods with 300mm embedment

- Mechanically fixed to Concrete footing via 4x M16 Chemset Rods

Issue: 8

Item 1

Main ID Sign Construction Detail

**Construction Method:**

1. Fabricated 100 × 100 × 3mm Aluminium SHS frame powdercoated white
2. 3mm white ACM face panels front and rear
3. Digital print and computer cut vinyl graphics
4. Concrete footing to engineers approval
5. M16 Chemset rods with 300mm embedment

Installation:

- Mechanically fixed to Concrete footing via 4x M16 Chemset Rods

Client:

PICA Group

Project:

BCS – Frenchs Forest Main ID Sign

Date:

3rd February 2021

Issue: 8

Item 1

Main ID Sign - Location



Northern
Beaches
Council

THIS PLAN IS TO BE READ IN
CONJUNCTION WITH
THE CONDITIONS OF DEVELOPMENT
CONSENT

DA2021/0097

ESR Existing Sign

Construction Method:

1. Fabricated 100 × 100 × 3mm Aluminium SHS frame powdercoated white
2. 3mm white ACM face panels front and rear
3. Digital print and computer cut vinyl graphics
4. Concrete footing to engineers approval
5. M16 Chemset rods with 300mm embedment

Installation:

- Mechanically fixed to Concrete footing via 4x M16 Chemset Rods

Client:

PICA Group

Project:

BCS – Frenchs Forest Main ID Sign

Date:

3rd February 2021

Issue: 8

Item 1

Main ID Sign - Location



**THIS PLAN IS TO BE READ IN
CONJUNCTION WITH
THE CONDITIONS OF DEVELOPMENT
CONSENT**

DA2021/0097

New Sign Location
Approx 20 meters from Warringah Road



Construction Method:

1. Fabricated 100 × 100 × 3mm Aluminium SHS frame powdercoated white
2. 3mm white ACM face panels front and rear
3. Digital print and computer cut vinyl graphics
4. Concrete footing to engineers approval
5. M16 Chemset rods with 300mm embedment

Installation:

- Mechanically fixed to Concrete footing via 4x M16 Chemset Rods

Client:

PICA Group

Project:

BCS – Frenchs Forest Main ID Sign

Date:

3rd February 2021

Issue: 8

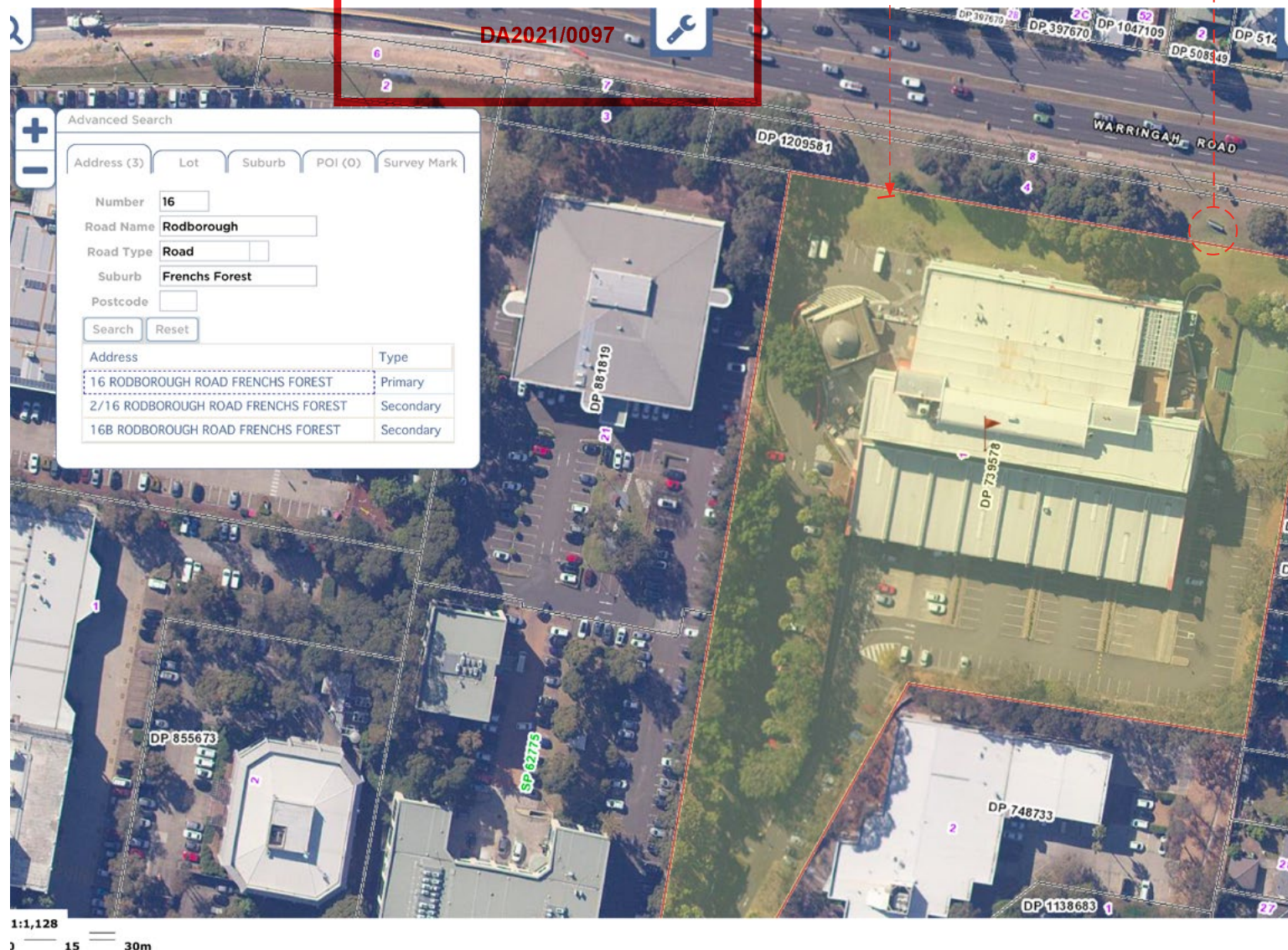
Item 1

Plan View with LOTs Boundaries



**THIS PLAN IS TO BE READ IN
CONJUNCTION WITH
THE CONDITIONS OF DEVELOPMENT
CONSENT**

Refer to Condition 2. No approval for sign referenced as "ESR Existing Sign"

**Construction Method:**

1. Fabricated 100 × 100 × 3mm Aluminium SHS frame powdercoated white
2. 3mm white ACM face panels front and rear
3. Digital print and computer cut vinyl graphics
4. Concrete footing to engineers approval
5. M16 Chemset rods with 300mm embedment

Installation:

- Mechanically fixed to Concrete footing via 4x M16 Chemset Rods

Client:

PICA Group

Project:

BCS – Frenchs Forest Main ID Sign

Date:

3rd February 2021

Issue: 8