





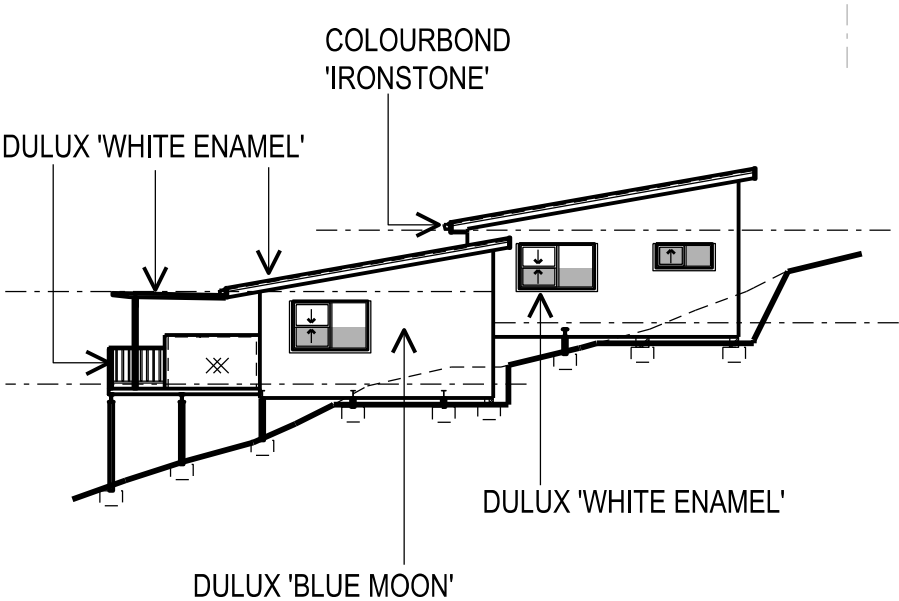
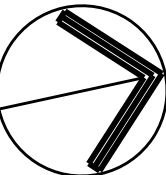


FINISHES SCHEDULE - 41 WALLUMATTA ROAD, NEWPORT		
ELEMENT	DESCRIPTION	COLOUR SAMPLE
ROOFING MATERIAL	STEEL ROOF SHEET (CUSTOMORB OR EQUIVALENT) FINISHED IN 'IRONSTONE' COLOURBOND COLOUR.	
EXTERIOR WALL LINING BOARDS	FIBRE CEMENT BOARDS FINISHED IN THE FOLLOWING PAINT COLOUR: 'BLUE MOON' BY DULUX	
WINDOWS AND DOORS	TIMBER FRAMES FINISHED IN WHITE ENAMEL PAINT COLOUR BY DULUX	
FASCIA BOARDS, PERGOLA BEAMS	AS FOR WINDOWS AND DOORS	
GUTTERS AND DOWNPIPES	STEEL MATERIALS FINISHED IN 'IRONSTONE' COLOURBOND COLOUR.	
HANDRAILS	TIMBER FRAMED, FINISHED IN WHITE ENAMEL PAINT BY DULUX	
CONCRETE DRIVEWAY	PLAIN CONCRETE IN BROOM FINISH	



TYPICAL ELEVATION  
'FINISHES'



PROJECT <b>PROPOSED SECONDARY DWELLING AND ALTERATIONS 41 WALLUMATTA RD, NEWPORT FOR MR &amp; MRS G K &amp; W K LAWRENCE</b>		BUILDING DESIGNER <b>BELLI DESIGN BUILDING PLANS</b> 57 PATRICK ST AVALON 2107 Mob - 0414 228 368	
TITLE <b>SCHEDULE OF FINISHES</b>		DRAWN DATE SCALE CHECKED	N. B. MAY 2020 1 : 200
		DRAWING NUMBER <b>2001-09</b>	REV <b>P1</b>