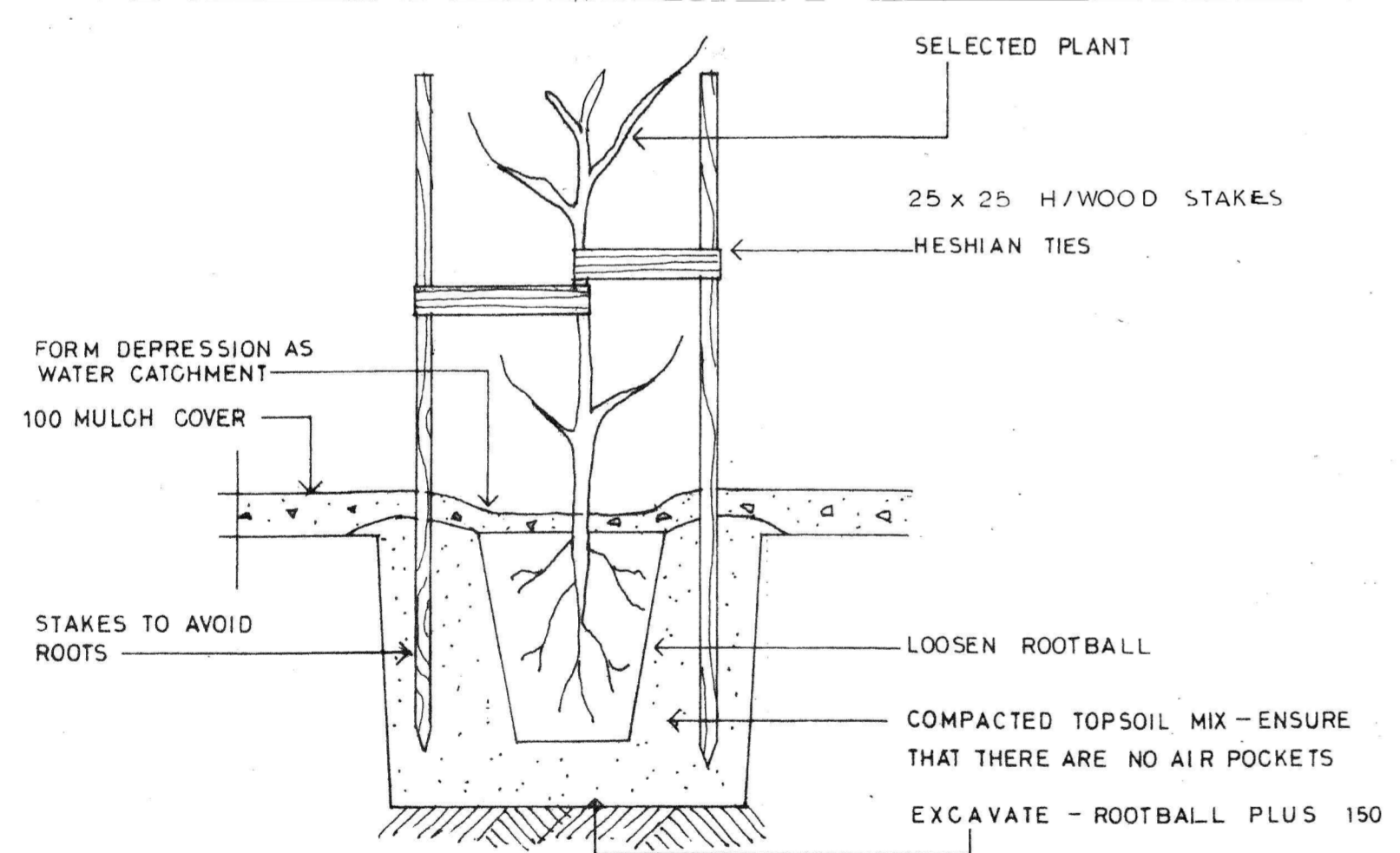
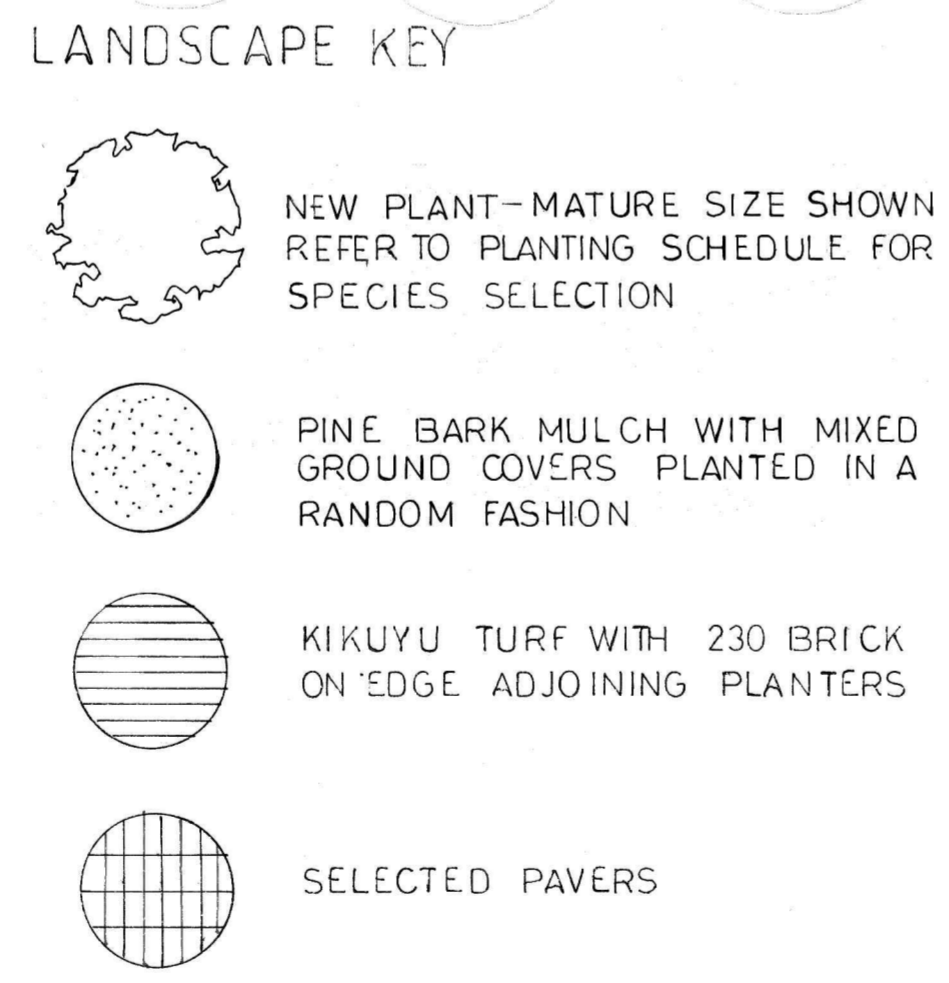


OCEAN STREET

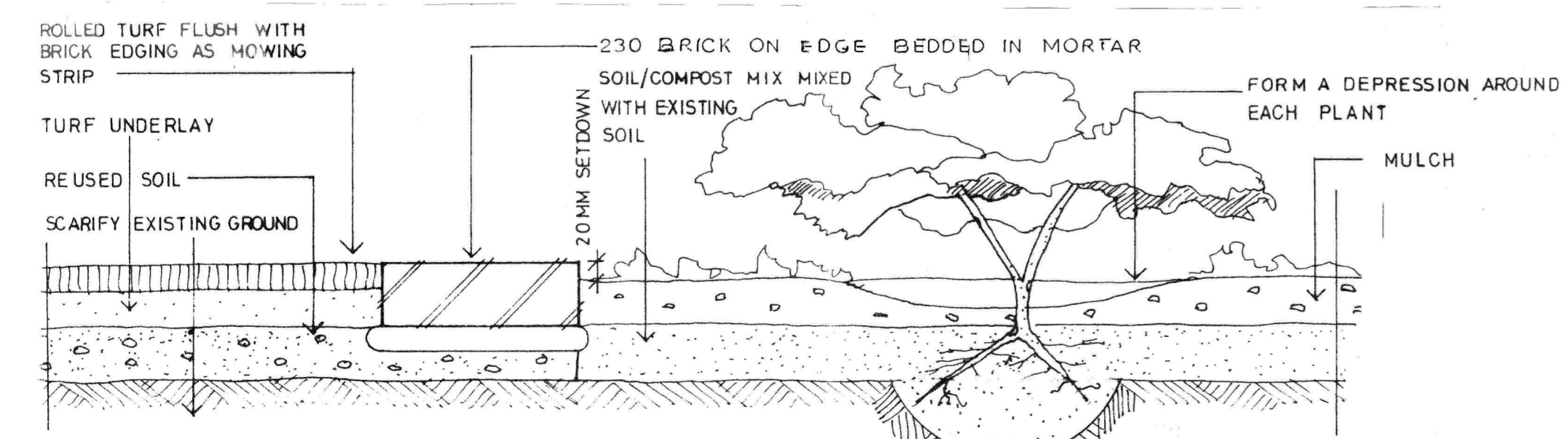


TYPICAL PLANTING & STAKING DETAILS (NTS)



PLANTING SCHEDULE

KEY	BOTANICAL NAME	COMMON NAME	APPROX SPACINGS	MATURE HEIGHT	POT SIZE	STAKING	NO OFF	
SMALL TREE								
①	<i>banksia serrata</i>	red honeysuckle	4 M	4 M	4 L	YES	10	
②	<i>ceratopetalum gummiferum</i>	nsw christmas bush	4 M	4 M	4 L	YES	9	
LARGE SHRUB								
③	<i>callistemon linearis</i>	narrow leaved bottle brush	3 M	3 M	3 L	YES	4	
④	<i>leptospermum scoparium</i>	roseum	2.5 M	2.5 M	3 L	YES	12	
SMALL SHRUB								
⑤	<i>prostanthera ovalifolia</i>	oval leaf mint bush	2 M	2 M	3 L	NO	38	
⑥	<i>westringia fruticosa</i>	coastal rosemary	1 M	1 M	2 L	NO	16	
⑦	<i>violacea iriodes</i>	native iris	1 M	1 M	2 L	NO	29	
⑧	<i>eriostemon myoporoides</i>	long leafed wax flower	1 M	1 M	2 L	NO	26	
GROUND COVERS & CLIMBERS								
	<i>hybbertia obtusifolia</i>	showy guinea flower	-	-	1 L		20	
	<i>leptospermum flavescens</i>	pacific beauty	-	-	1 L		20	
	<i>trachelospermum jasminoides</i>	star jasmn	-	-	1 L		20	
							TOTAL	204



TYPICAL IN GROUND PLANTING DETAILS

Rev	Description	Date
A		

LANDSCAPE PLAN

PROJECT
PROPOSED DEVELOPMENT
140 OCEAN STREET,
NARRABEEN

CLIENT
MISSIONARY SISTERS OF
BLESSED VIRGIN MARY

DRAWN BY
JO'B

CHECKED BY
JO'B

DATE
08/09/19

SCALE (@ A1)
1 : 100

PROJECT NUMBER
2019_002

DRAWING NUMBER
SK010

REV
E

JOHN O'BRIEN
A.A.I.A. B.Arch., Grd. Dip. Land Design

ARCHITECT & LANDSCAPE CONSULTANT
PO BOX 507, DARLINGHURST 1300 • TELEPHONE 0478 145 434
JOHNOBRIENARCHITECT@GMAIL.COM • ABN: 112 669 168 04