

FREMONT[®]

Pittwater RSL Club - Pylon & External Signage

Site Plan SG-01 PYLON SIGN

Scale - 1:200

Survey Source - Urban Surveying 23/05/2023

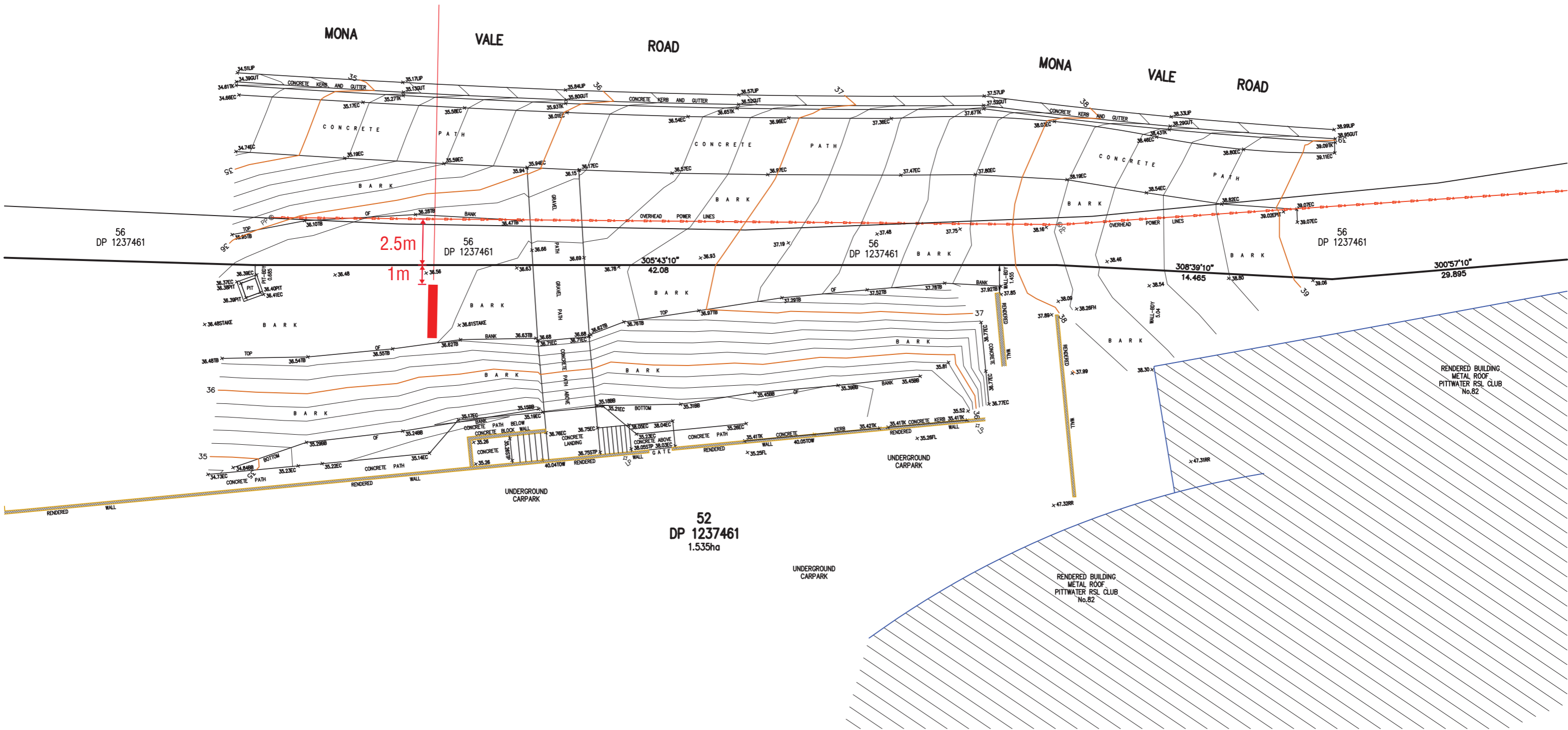


DISTANCE REFERENCES ADDED TO SURVEY

PYLON SIGN INSIDE BOUNDARY - 1m

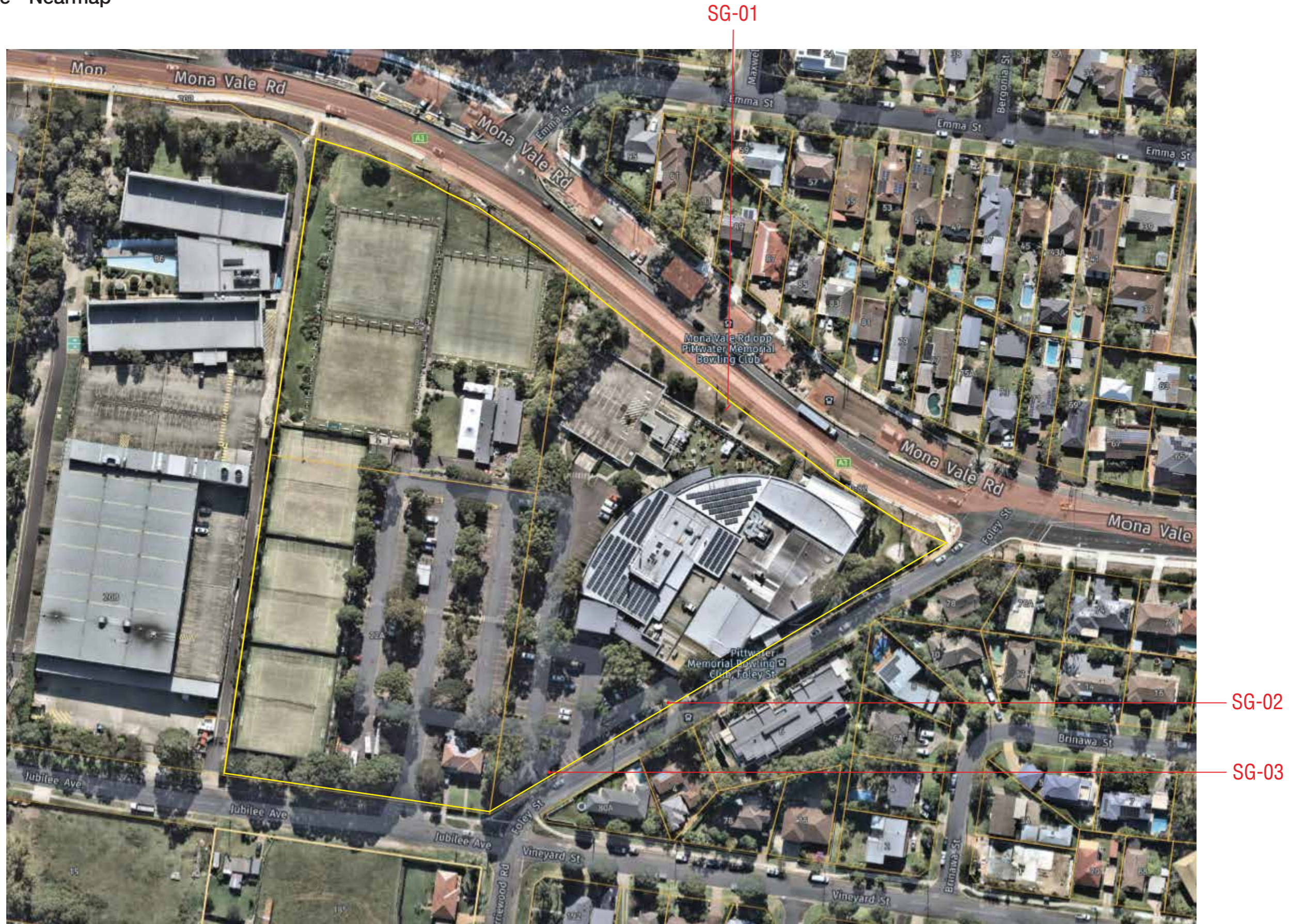
PYLON SIGN OVERHEAD DISTANCE TO POWERLINES - 3.5m

SG-01 PYLON SIGN



Site Plan - SG-01, SG-02, SG-03

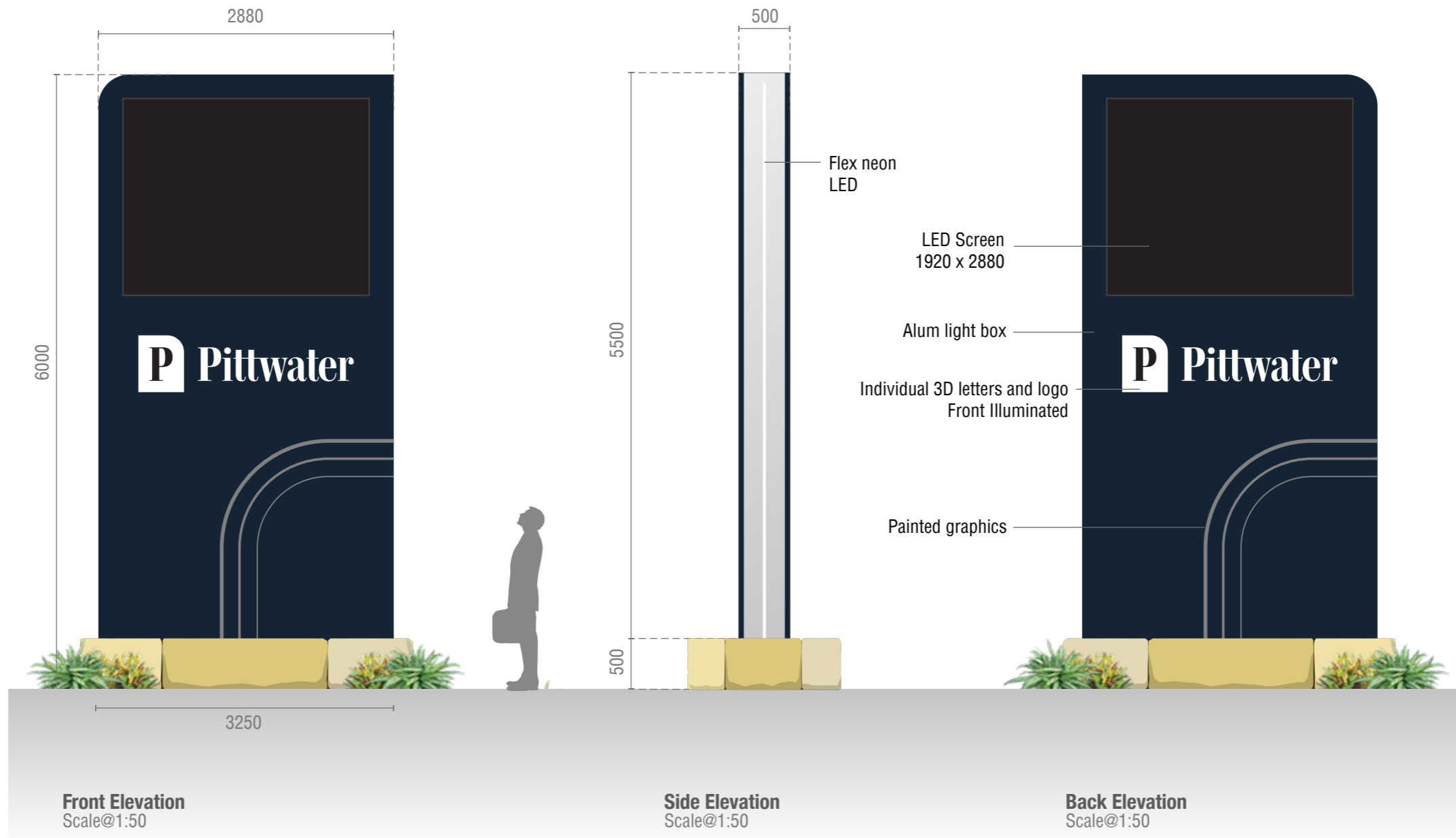
Aerial Photo Source - Nearmap



SG-01_Pylon Sign - Option 1

Details

- Pylon sign with illuminated letters
- LED screen to both sides



SG-01_Pylon Sign - Option 1

Details

- Pylon sign with illuminated letters
- LED screen to both sides



SG-01_Pylon Sign (Screen Details)

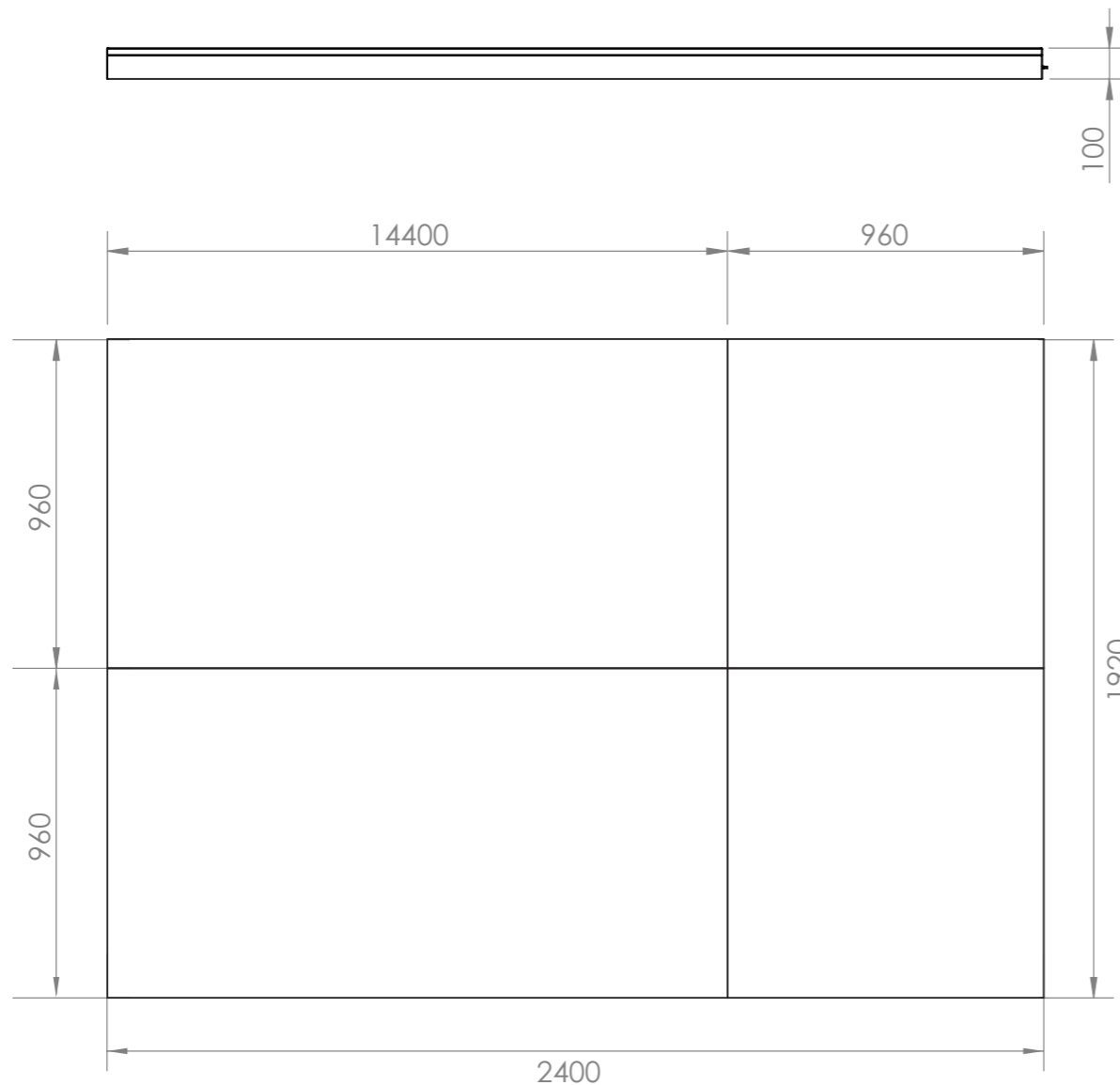
Details

- Steel fabricated sign frame
- Aluminium cladding
- LED screen by others
- Total 4.6sqm

Light Details

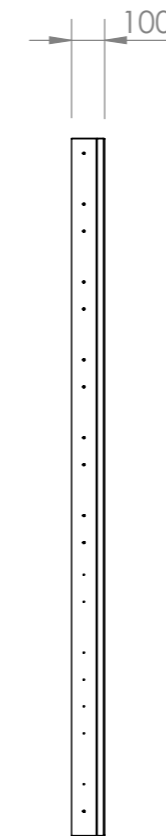
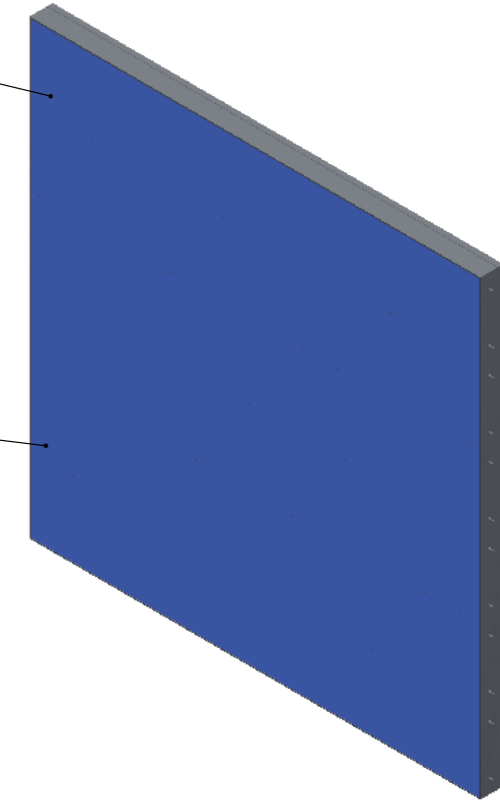
 POWER OUTPUT
12W/m (12V)

 LUMENS
350lm/m



P3 Outdoor LED Display

Ethernet or strong Wifi for Data
If not available a 4g dongle will be required.

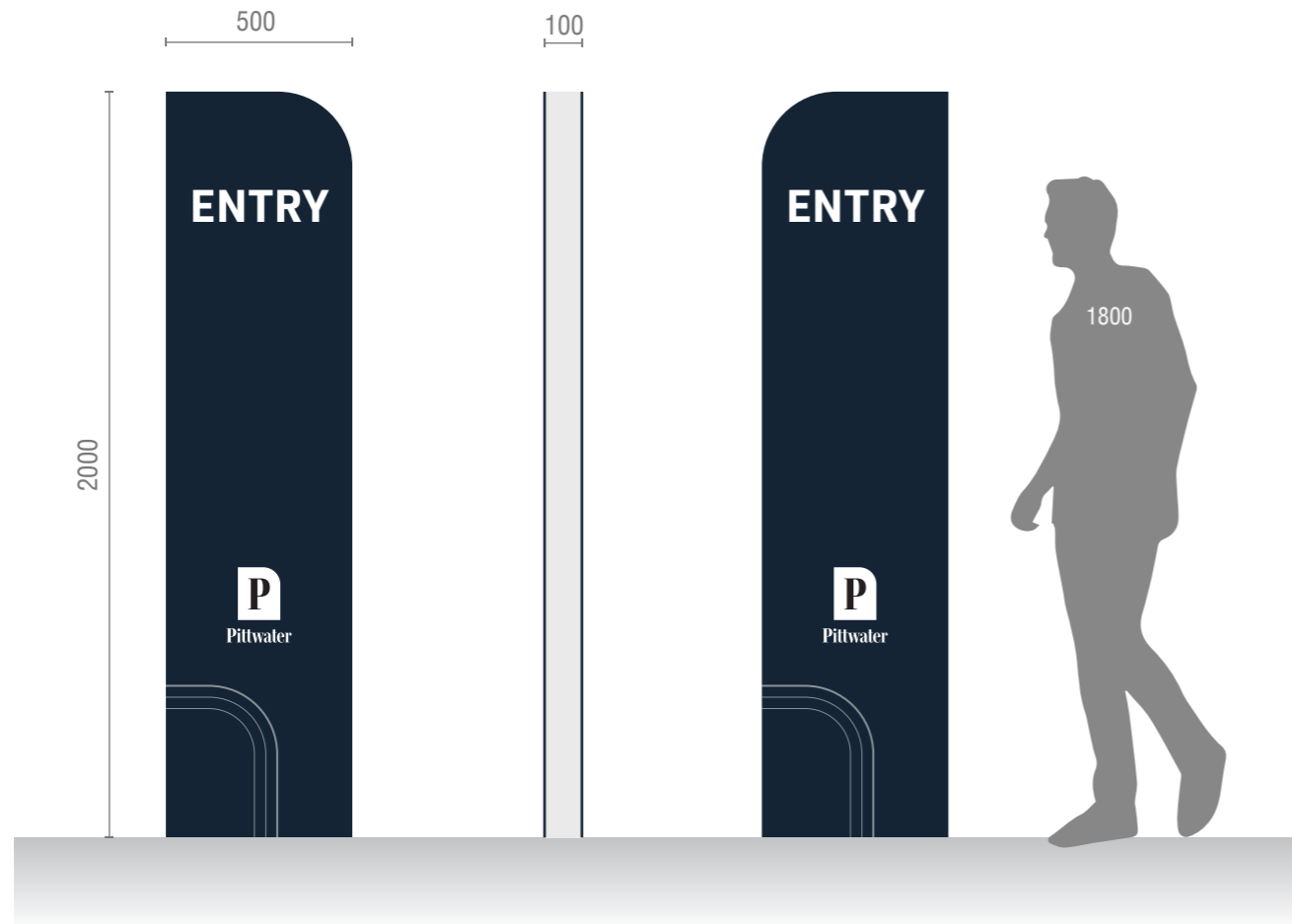


Power & Data Requirements	
GPO Qty	1
GPO Location	Rear
Ethernet QTY	1
Ethernet Location	Female termination in Machine bases / Male termination at server rack
Voltage (volts)	240
Amps (Max/Typical)	10/2.07
Watts (Max/Typical)	2410/496
HEAT BTUs	8212

SG-02_Entry Plinth

Details

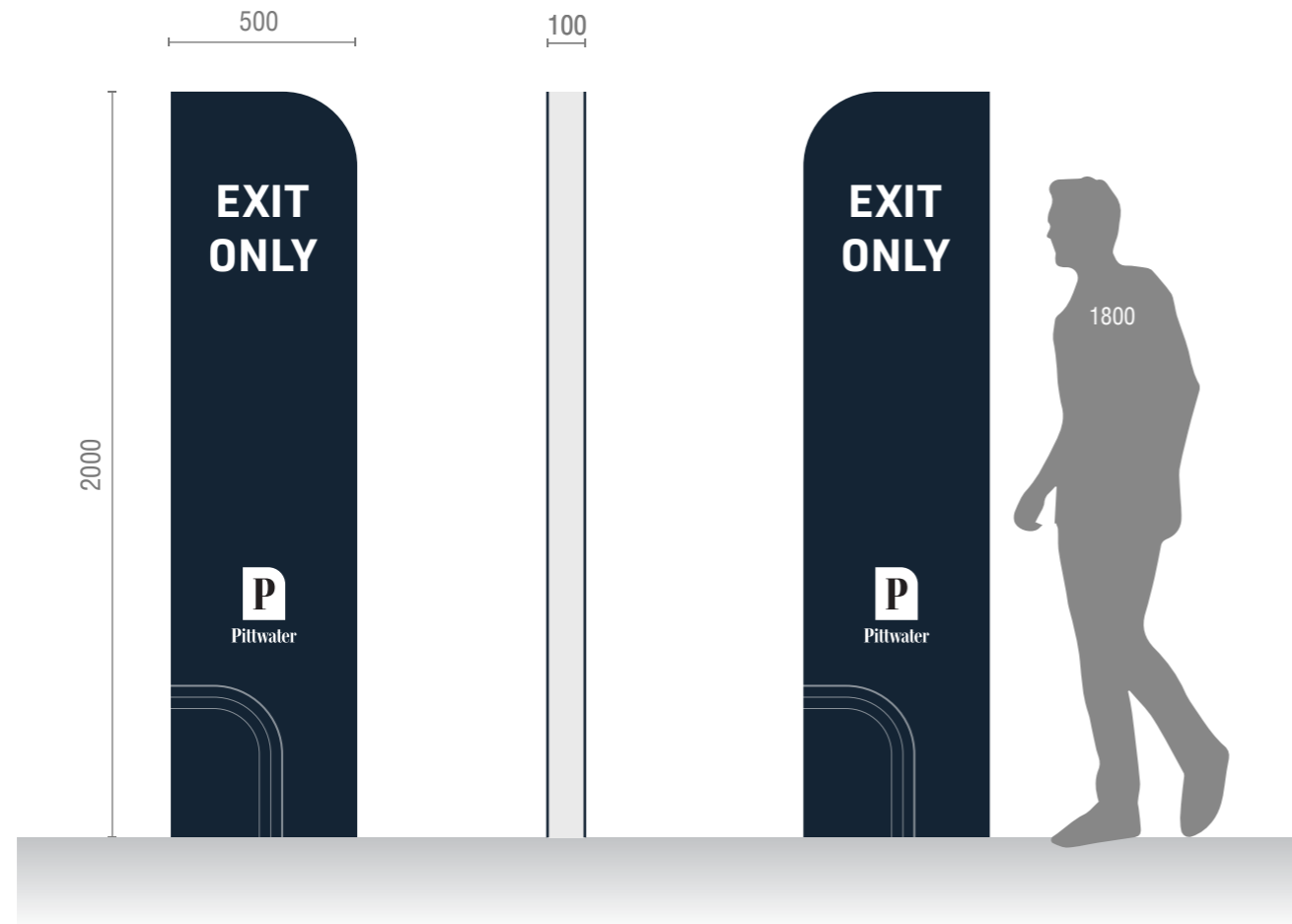
- Non-illuminated plinth sign



SG-03_Exit Plinth

Details

- Non-illuminated plinth sign



Thank you.

F
R
E
M
O
N
T

Carmie

CARLING-KENO RESTAURANT and BAR

GOLDEN NUGGET GAMBLING HALL

BENTLEY'S TRADING POST

LUCKY STRIKE CLUB

BINGO

GOLDEN NUGGET

HOTEL APACHE