

**LANDSCAPE NOTES**

**SOIL PREPARATION**  
WHERE EARTHWORKS HAVE OCCURRED, THE CONTRACTOR IS TO ENSURE STOCKPILED TOPSOIL IS FREE OF UNWANTED MATTER SUCH AS ROCKS, CLAY LAMPS, TREE ROOTS, BUILDERS RUBBISH AND ANY MATERIAL TOXIC TO PLANTS.

**NOXIOUS PLANTS**  
ALL DECLARED NOXIOUS PLANTS LISTED FOR THE COUNCIL AREA ARE TO BE REMOVED FROM ALL AREAS OF THE SITE.





**PREPARATION OF GARDEN BEDS**  
CULTIVATE GARDEN BEDS TO A DEPTH OF 300MM. INCORPORATE ORGANIC SOIL CONDITIONER WITH EXISTING SOIL WHEN PLANTING. DO NOT CULTIVATE SOIL BENEATH EXISTING TREES TO BE RETAINED. FINE GRADE MULCH, SUCH AS FOREST FINES, TO BE INSTALLED TO A DEPTH OF 50MM TO GARDEN BEDS, COVING MULCH DOWN AROUND PLANT STEMS AND FINISHING FLUSH WITH ADJACENT SURFACES. FERTILISE PLANTS WITH SLOW RELEASE FERTILISER SUITABLE TO PLANT SELECTION AND THOROUGHLY WATER TREATMENT.

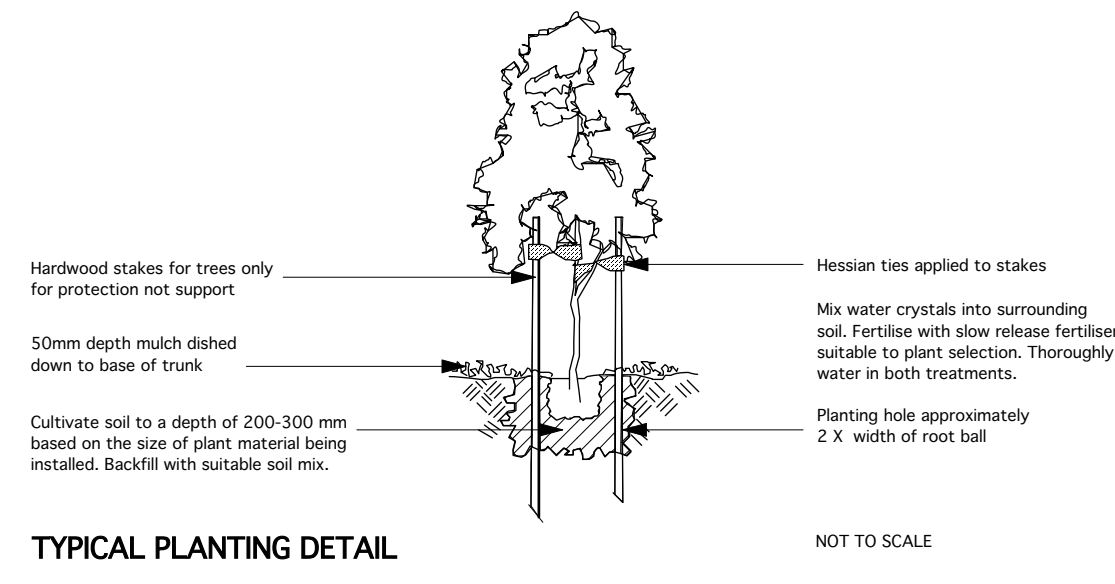
**INSTALLATION OF PLANTING MATERIAL**  
ALL PLANTS ARE TO BE TRUE TO NAME, SIZE AND VARIETY, IN A WELL DEVELOPED HEALTHY CONDITION, FREE FROM INSECTS AND DISEASES AND WITH WELL ESTABLISHED ROOT SYSTEMS. SUBSTITUTES IN SIZE OR VARIETY ARE NOT TO BE MADE. REFER TO PLANTING SCHEDULE FOR SPECIES, CONTAINER SIZES & QUANTITIES.

**PAVING**  
PAVERS TO CLIENT SELECTION.

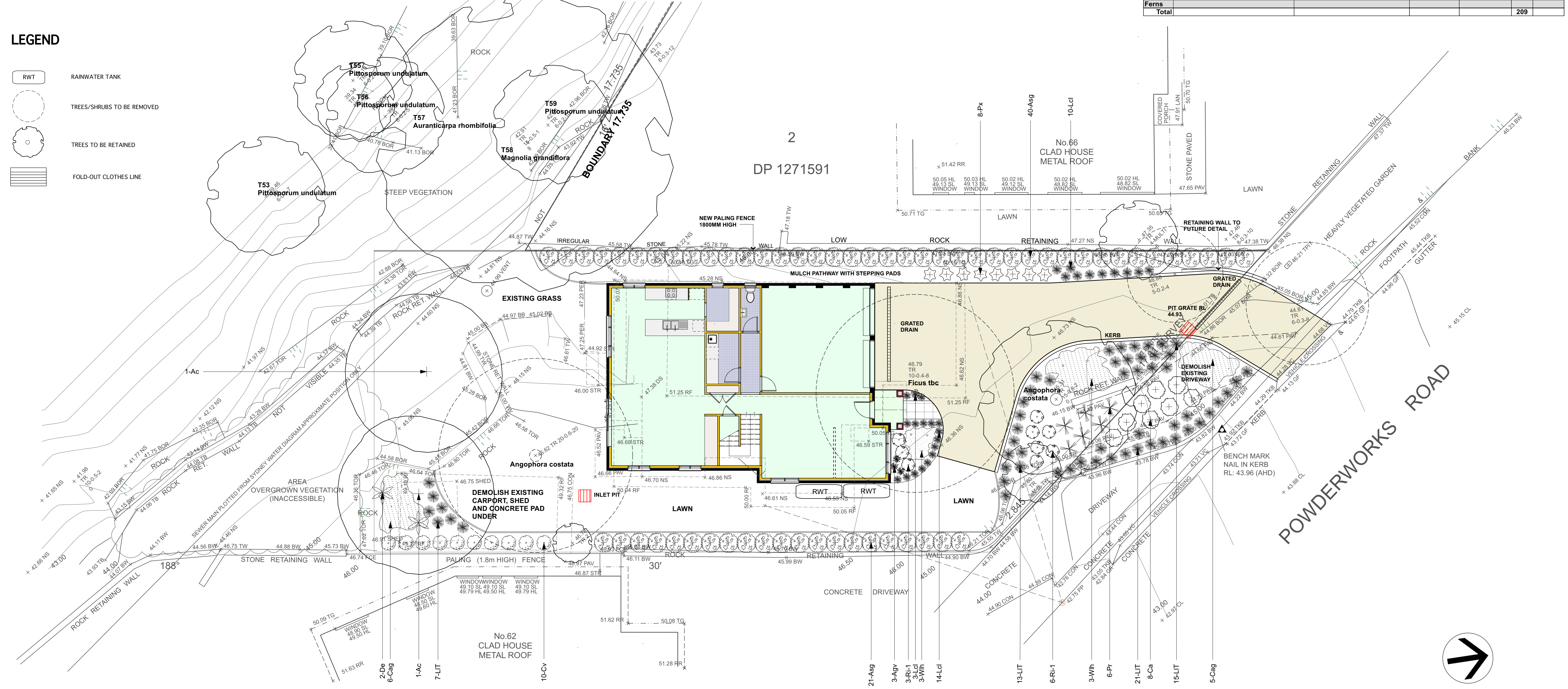
**IRRIGATION**  
INSTALL A FULLY AUTOMATIC DRIP IRRIGATION SYSTEM APPROVED BY COUNCIL AND/OR THE WATER BOARD TO NEW GARDEN BEDS AND PLANTERS. CONNECT IRRIGATION SYSTEM TO RW TANKS.

**LEGEND**

-  RWT RAINWATER TANK
-  TREES/SHRUBS TO BE REMOVED
-  TREES TO BE RETAINED
-  FOLD-OUT CLOTHES LINE




ID	Botanical Name	Common Name	Mature Height	Mature Spread	Qty	Pot size
<b>Trees</b>						
Ac	Angophora costata	Sydney Red Gum, Smooth-barked Apple	15 - 20m	6 - 10m	2	300 mm
<b>Shrubs</b>						
Asg	Acmena smithii var minor	Acmena smithii 'Goodbye Neighbour'	2-5 m	2-3 m	61	300 mm
Cv	Callistemon viminalis 'Better John'	Better John Bottlebrush	0.6 - 1.2m	0.6 - 0.9m	10	200 mm
Ca	Correa alba	White Correa	0.9 - 1.5m	0.9 - 1.2m	8	100 mm
De	Doryanthes excelsa	Gymea Lily, Giant Lily	1.5 - 3m	1.2 - 2.0m	2	200 mm
Px	Philodendron 'Xanadu'	Xanadu Philodendron	1.0 - 1.2m	0.7 - 0.9 m	6	200 mm
Ri-1	Raphiolepis indica 'Oriental Pearl'	Indian Hawthorn	1-1.5 m	0.7 - 0.9 m	9	200 mm
<b>Ground Covers</b>						
Cag	Carpobrotus glaucescens	Pigface, Iceplant	0.0 - 0.3m	1.2 - 2.0m	11	100 mm
Wh	Westringia 'Low Horizon'	Coastal Rosemary	0.3 - 0.4m	0.6 - 1m	6	140 mm
<b>Grasses</b>						
Avy	Anigozanthos 'Gold Velvet'	Gold Velvet Kangaroo Paw	0.5 - 0.6m	0.3 - 0.4m	3	140 mm
Lcl	Lomandra confertifolia 'Little Con'	Mat-rush	0.3 - 0.4m	0.3 - 0.7m	27	100 mm
LIT	Lomandra longifolia 'Tanika'	Spriny-headed mat rush	0.45 - 0.6m	0.6 - 0.9m	56	100 mm
Pr	Pennisetum 'Rubrum'	Purple Fountain Grass	0.6 - 0.75m	0.3 - 0.6m	6	100 mm
<b>Climbers</b>						
<b>Ferns</b>						
<b>Total</b>					<b>209</b>	



**PLANT PALETTE**



 LANDSCAPE DESIGNER <b>PETA GILLILAND LANDSCAPE DESIGN</b> 16 melaleuca street newport nsw 2106 T:0425 245 633 E: info@gillilandscapes.com.au	AMENDMENTS <b>DRAFT 24.4.24 PENDING TREE IMPACT STATEMENT</b>	PROJECT <b>NEW DWELLING</b> 64 POWDERWORKS ROAD NORTH NARRABEEN	DRAWN PG	SCALE 1:100 @ A1	DATE 2/3/24	DWG NO <b>L001</b>	REV <b>A</b>
	ALL CIVIL, STRUCTURAL AND HYDRAULIC WORKS ASSOCIATED WITH THIS PROJECT SHALL BE TO THE RELEVANT ENGINEER'S DETAILS. FIGURED DIMENSIONS TO BE TAKEN IN PREFERENCE TO SCALING. ALL DIMENSIONS AND LEVELS TO BE VERIFIED BY THE CONTRACTOR ON SITE. THIS LANDSCAPE PLAN HAS BEEN PREPARED ON AN A1 SHEET OF PAPER TO BE READ AT 1:100 SCALE.			TITLE <b>Landscape Plan</b>		Sheet 1/1	