

 **northern
beaches
council**

**THIS PLAN IS TO BE READ IN
CONJUNCTION WITH
THE CONDITIONS OF DEVELOPMENT
CONSENT**

DA2025/0129

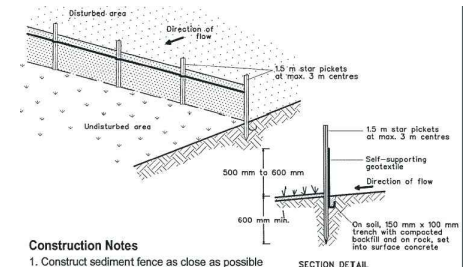
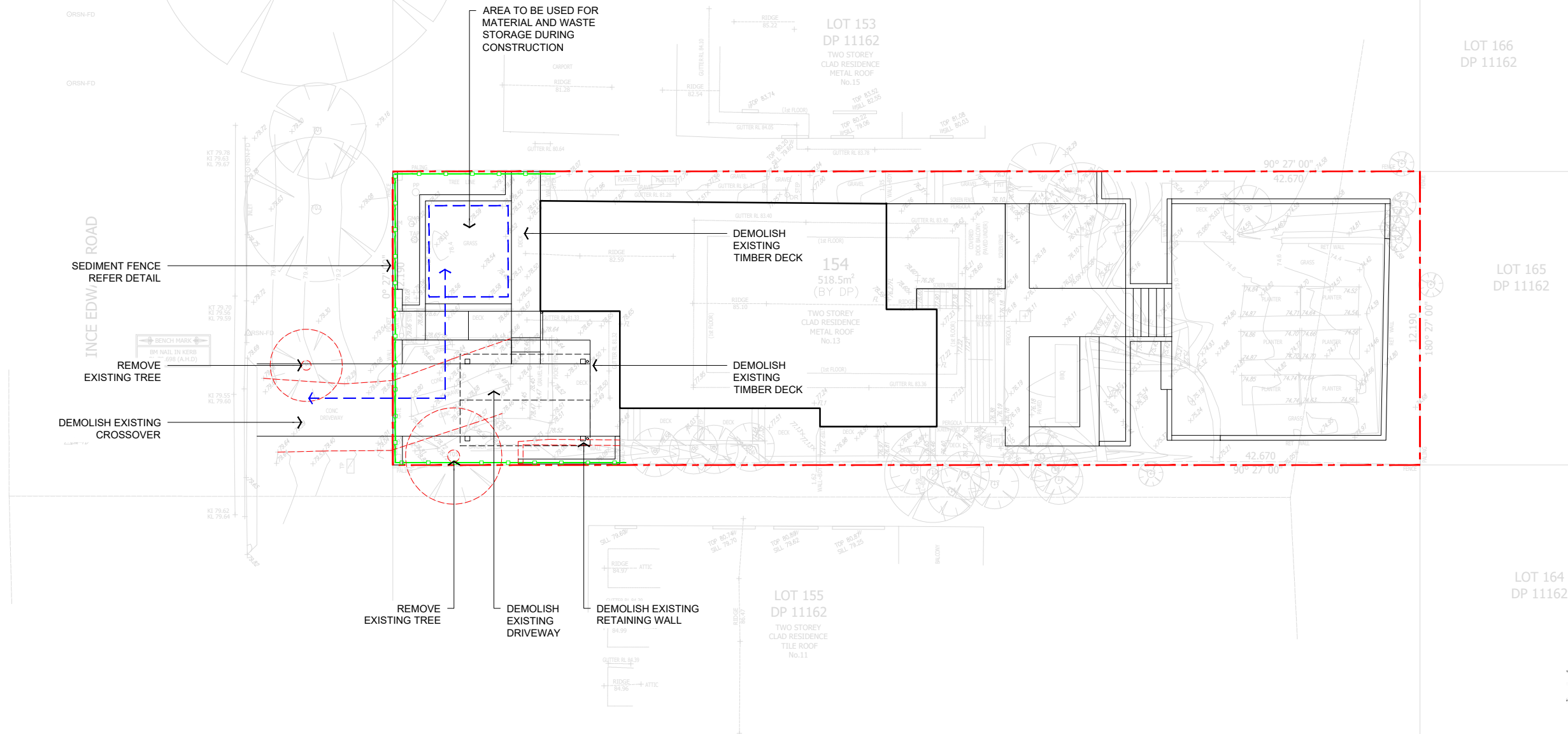
<div>LONE PINE</div> <div>LANDSCAPES</div> <div>531 Sydney Road Seaforth 02 9907 0988 www.lonepinelandscapes.com.au</div>	<div>NOTES</div> <div>1. DO NOT SCALE DRAWINGS. USE FIGURED DIMENSIONS ONLY.</div> <div>2. DIMENSIONS ARE IN MILLIMETRES UNLESS NOTATED DIFFERENTLY.</div> <div>3. CHECK AND VERIFY LEVELS AND DIMENSIONS ON SITE PRIOR TO COMMENCEMENT OF ANY WORK.</div> <div>4. THIS DRAWING IS COPYRIGHT OF LONE PINE LANDSCAPES</div> <div>5. THIS DRAWING MAY NOT BE REPRODUCED, ALTERED OR TRANSMITTED IN ANY FORM WITHOUT PERMISSION.</div> <div>6. THIS DRAWING ISSUE IS NOT FOR CONSTRUCTION</div>	<div><div>0201</div><div>SET-BACKS UPDATED ISSUED FOR DEVELOPMENT APPLICATION</div><div>31.03.25 16.12.24</div></div> <div><div>REV</div><div>DESCRIPTION</div><div>DATE</div></div>	<div><div>NORTH</div><div>SCALE</div><div><div><div></div></div><div><div>0</div><div>2</div><div>4</div><div>8m</div></div></div></div>	<div>PROJECT</div> <div>HODGES / CASTILLO</div> <div>13 PRINCE EDWARD ROAD</div> <div>SEAFORTH</div> <div>2092</div>	<div>DRAWING TITLE</div> <div>SITE PLAN</div>	<div><div>STATUS</div><div>DEVELOPMENT APPLICATION</div><div><div>SCALE @ A3</div><div>1:200</div><div>DRAWN</div><div>CN</div><div>REVIEWED</div><div>NR</div><div>APPROVED</div><div>RF</div></div><div><div>PROJECT NUMBER</div><div>LPL_2730</div><div>DRAWING NUMBER</div><div>LPL_0101</div><div>REV</div><div>02</div></div></div>
---	--	--	--	--	---	---



northern
beaches
council

THIS PLAN IS TO BE READ IN
CONJUNCTION WITH
THE CONDITIONS OF DEVELOPMENT
CONSENT

DA2025/0129



- Construction Notes**
- Construct sediment fence as close as possible to parallel to the contours of the site.
 - Drive 1.5 metre long star pickets into ground, 2.5 metres apart (max.).
 - Dig a 150 mm deep trench along the upslope line of the fence for the bottom of the fabric to be entrenched.
 - Fix self-supporting geotextile to upslope side of posts with wire ties or as recommended by geotextile manufacturer.
 - Join sections of fabric at a support post with a 150 mm overlap.
 - Backfill the trench over the base of the fabric and compact it thoroughly over the geotextile.

SEDIMENT FENCE SD 6-8

LONE
PINE
LANDSCAPES

531 Sydney Road Seaforth | 02 9907 0988 | www.lonepinelandscapes.com.au

NOTES

- DO NOT SCALE DRAWINGS. USE FIGURED DIMENSIONS ONLY.
- DIMENSIONS ARE IN MILLIMETRES UNLESS NOTATED DIFFERENTLY.
- CHECK AND VERIFY LEVELS AND DIMENSIONS ON SITE PRIOR TO COMMENCEMENT OF ANY WORK.
- THIS DRAWING IS COPYRIGHT OF LONE PINE LANDSCAPES
- THIS DRAWING MAY NOT BE REPRODUCED, ALTERED OR TRANSMITTED IN ANY FORM WITHOUT PERMISSION.
- THIS DRAWING ISSUE IS NOT FOR CONSTRUCTION

02
01

SET-BACKS UPDATED
ISSUED FOR DEVELOPMENT APPLICATION

31.03.25
16.12.24

REV

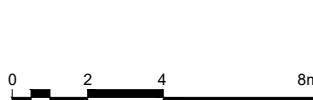
DESCRIPTION

DATE

NORTH



SCALE



PROJECT

HODGES / CASTILLO
13 PRINCE EDWARD ROAD
SEAFORTH
2092

DRAWING TITLE

WASTE MANAGEMENT PLAN

STATUS

DEVELOPMENT APPLICATION

SCALE @ A3

1:200

DRAWN

CN

REVIEWED

NR

APPROVED

RF

PROJECT NUMBER

LPL_2730

DRAWING NUMBER

LPL_0102

REV

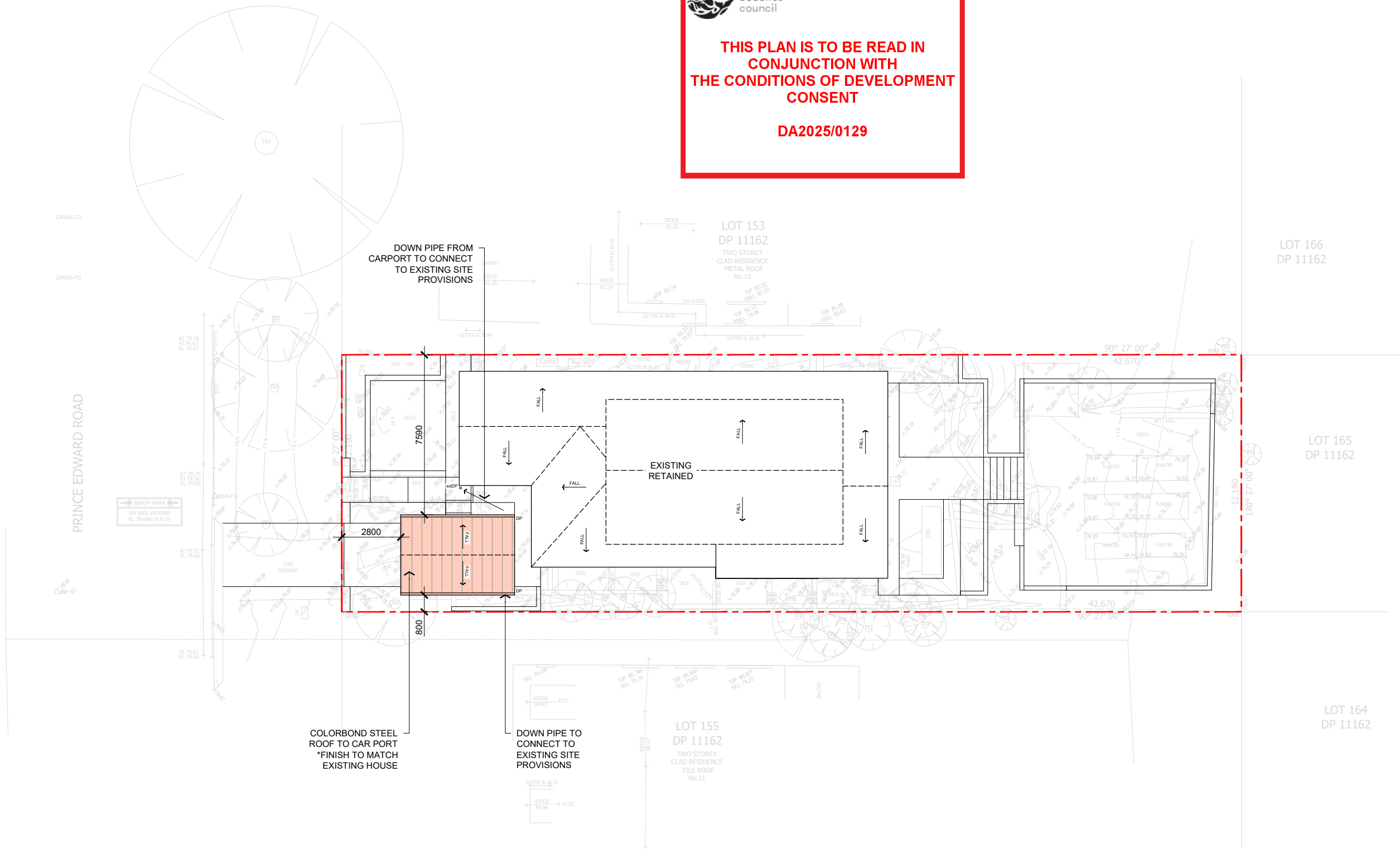
02



northern
beaches
council

THIS PLAN IS TO BE READ IN
CONJUNCTION WITH
THE CONDITIONS OF DEVELOPMENT
CONSENT

DA2025/0129



LONE
PINE
LANDSCAPES

531 Sydney Road Seaforth | 02 9907 0988 | www.lonepinelandscapes.com.au

NOTES

- DO NOT SCALE DRAWINGS. USE FIGURED DIMENSIONS ONLY.
- DIMENSIONS ARE IN MILLIMETRES UNLESS NOTATED DIFFERENTLY.
- CHECK AND VERIFY LEVELS AND DIMENSIONS ON SITE PRIOR TO COMMENCEMENT OF ANY WORK.
- THIS DRAWING IS COPYRIGHT OF LONE PINE LANDSCAPES
- THIS DRAWING MAY NOT BE REPRODUCED, ALTERED OR TRANSMITTED IN ANY FORM WITHOUT PERMISSION.
- THIS DRAWING ISSUE IS NOT FOR CONSTRUCTION

02
01
REV

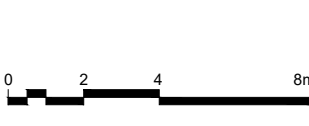
SET-BACKS UPDATED
ISSUED FOR DEVELOPMENT APPLICATION
DESCRIPTION

31.03.25
16.12.24
DATE

NORTH



SCALE



PROJECT

HODGES / CASTILLO
13 PRINCE EDWARD ROAD
SEAFORTH
2092

DRAWING TITLE

ROOF PLAN

STATUS

DEVELOPMENT APPLICATION

SCALE @ A3
1:200

DRAWN
CN

REVIEWED
NR

APPROVED
RF

PROJECT NUMBER
LPL_2730

DRAWING NUMBER
LPL_0104

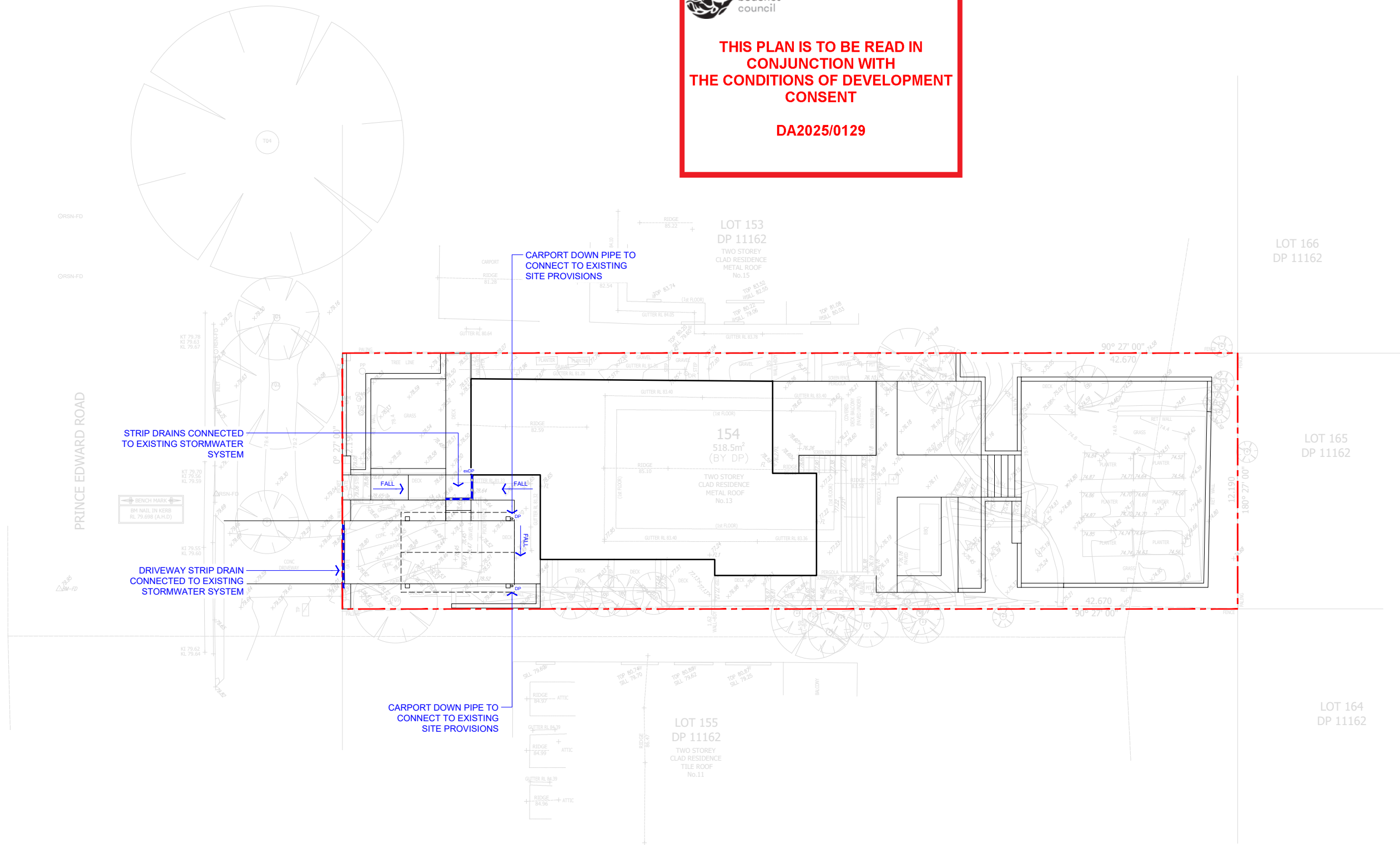
REV
02



northern
beaches
council

THIS PLAN IS TO BE READ IN
CONJUNCTION WITH
THE CONDITIONS OF DEVELOPMENT
CONSENT

DA2025/0129



LONE
PINE
LANDSCAPES

531 Sydney Road Seaforth | 02 9907 0988 | www.lonepinelandscapes.com.au

NOTES

- DO NOT SCALE DRAWINGS. USE FIGURED DIMENSIONS ONLY.
- DIMENSIONS ARE IN MILLIMETRES UNLESS NOTATED DIFFERENTLY.
- CHECK AND VERIFY LEVELS AND DIMENSIONS ON SITE PRIOR TO COMMENCEMENT OF ANY WORK.
- THIS DRAWING IS COPYRIGHT OF LONE PINE LANDSCAPES
- THIS DRAWING MAY NOT BE REPRODUCED, ALTERED OR TRANSMITTED IN ANY FORM WITHOUT PERMISSION.
- THIS DRAWING ISSUE IS NOT FOR CONSTRUCTION

02
01
REV

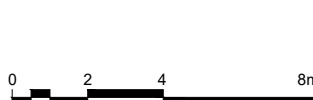
SET-BACKS UPDATED
ISSUED FOR DEVELOPMENT APPLICATION
DESCRIPTION

31.03.25
16.12.24
DATE

NORTH



SCALE



PROJECT

HODGES / CASTILLO
13 PRINCE EDWARD ROAD
SEAFORTH
2092

DRAWING TITLE

STORMWATER PLAN

STATUS

DEVELOPMENT APPLICATION

SCALE @ A3
1:200

DRAWN
CN

REVIEWED
NR

APPROVED
RF

PROJECT NUMBER
LPL_2730

DRAWING NUMBER
LPL_0105

REV
02

LEGEND

- SITE BOUNDARY
- EXISTING LEVELS
- RL
13.785
+

PROPOSED LEVELS
- TO BE DEMOLISHED
- CONCRETE
- NATURAL STONE
PAVING
- TIMBER DECKING
- MASONRY RETAINING
WALL
- TIMBER BATTEN
FENCE / SCREEN
- SYNTHETIC TURF
- MULCHED GARDEN BED
- SHRUB PLANTING
- EXISTING TREE PLANTING
RETAINED

PLANTING SCHEDULE

TREE PLANTING

CODE	BOTANICAL NAME	COMMON NAME	POT SIZE	TOTAL
LAG ind	Lagerstroemia indica	Crape Myrtle	45L	3
WAT flo	Waterhousea floribunda	Weeping Lilly Pilly	45L	3

SHRUB PLANTING

CODE	BOTANICAL NAME	COMMON NAME	POT SIZE	TOTAL
ALP nut	Alpinia nutans	Dwarf cardamon	200mm	33
BLE gib	Blechnum Gibbum 'Silver Lady'	Silver Lady Fern	200mm	3
DRA tri	Dracaena trifasciata	Mother in Laws Tongue	200mm	5
LIG ren	Ligularia reniformis	Tractor Plant	200mm	14
SAN tri	Sansevieria trifasciata	Snake Plant	200mm	5

NOTE:
The plant symbols shown do not represent the exact placement of individual species but rather shows design intent. The plant numbers allow for plants to be spaced according to their growth habit and potential mature size. Exact plant locations will be confirmed prior to construction.



THIS PLAN IS TO BE READ IN
CONJUNCTION WITH
THE CONDITIONS OF DEVELOPMENT
CONSENT

DA2025/0129

LONE
PINE

LANDSCAPES
531 Sydney Road Seaforth | 02 9907 0988 | www.lonepineinlandscapes.com.au

NOTES

- DO NOT SCALE DRAWINGS. USE FIGURED DIMENSIONS ONLY.
- DIMENSIONS ARE IN MILLIMETRES UNLESS NOTATED DIFFERENTLY.
- CHECK AND VERIFY LEVELS AND DIMENSIONS ON SITE PRIOR TO COMMENCEMENT OF ANY WORK.
- THIS DRAWING IS COPYRIGHT OF LONE PINE LANDSCAPES
- THIS DRAWING MAY NOT BE REPRODUCED, ALTERED OR TRANSMITTED IN ANY FORM WITHOUT PERMISSION.
- THIS DRAWING ISSUE IS NOT FOR CONSTRUCTION

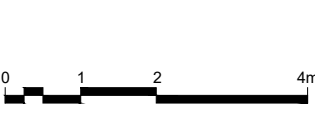
02
01
REV
SET-BACKS UPDATED
ISSUED FOR DEVELOPMENT APPLICATION
DESCRIPTION

31.03.25
16.12.24
DATE

NORTH



SCALE



PROJECT

HODGES / CASTILLO
13 PRINCE EDWARD ROAD
SEAFORTH
2092

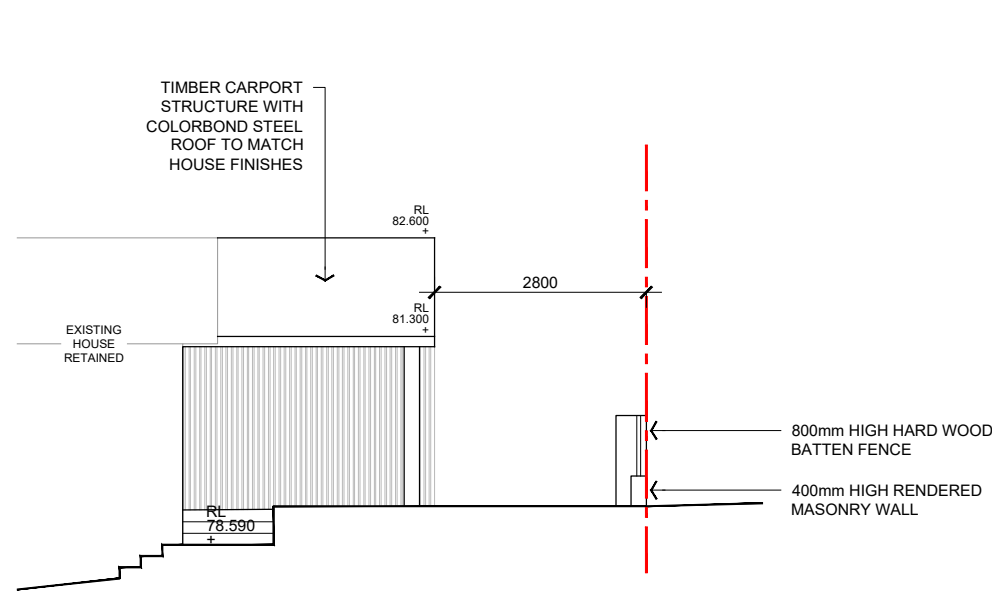
DRAWING TITLE

LANDSCAPE PLAN

STATUS

DEVELOPMENT APPLICATION

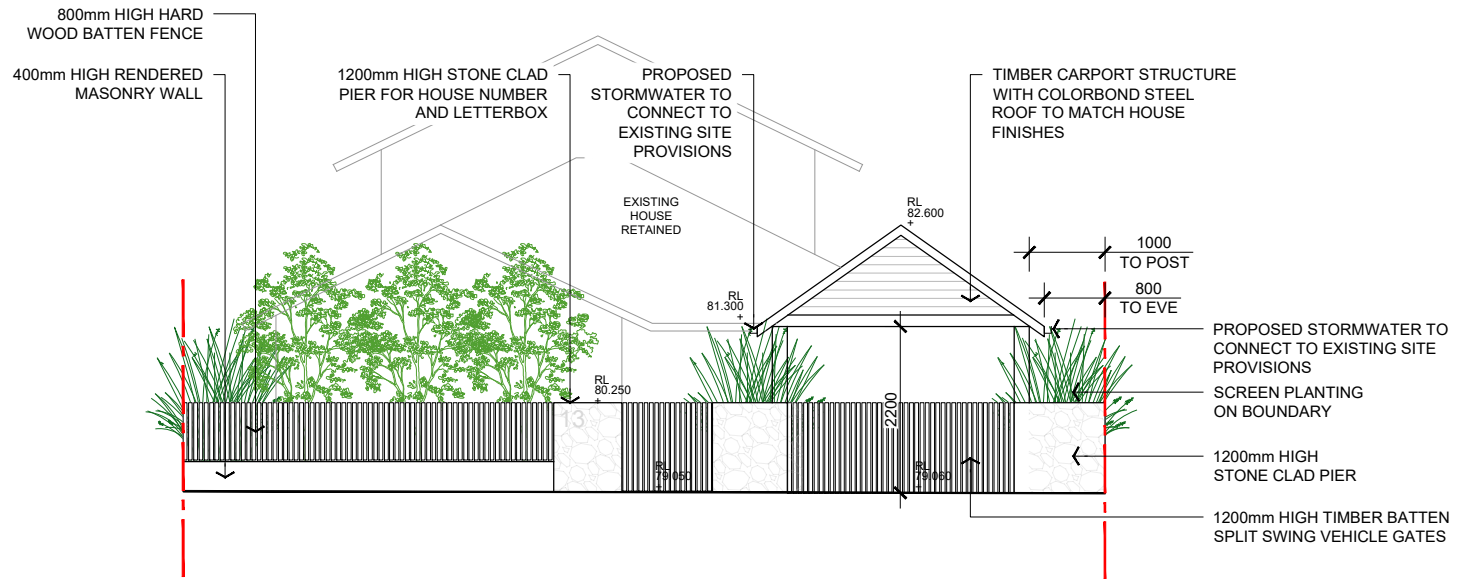
SCALE @ A3	DRAWN	REVIEWED	APPROVED
1:100	CN	NR	RF
PROJECT NUMBER	DRAWING NUMBER	REV	
LPL_2730	LPL_1101	02	



EL01
LPL_1101

ELEVATION 01 - NORTH


Scale: 1:100@A3



EL02
LPL_1101

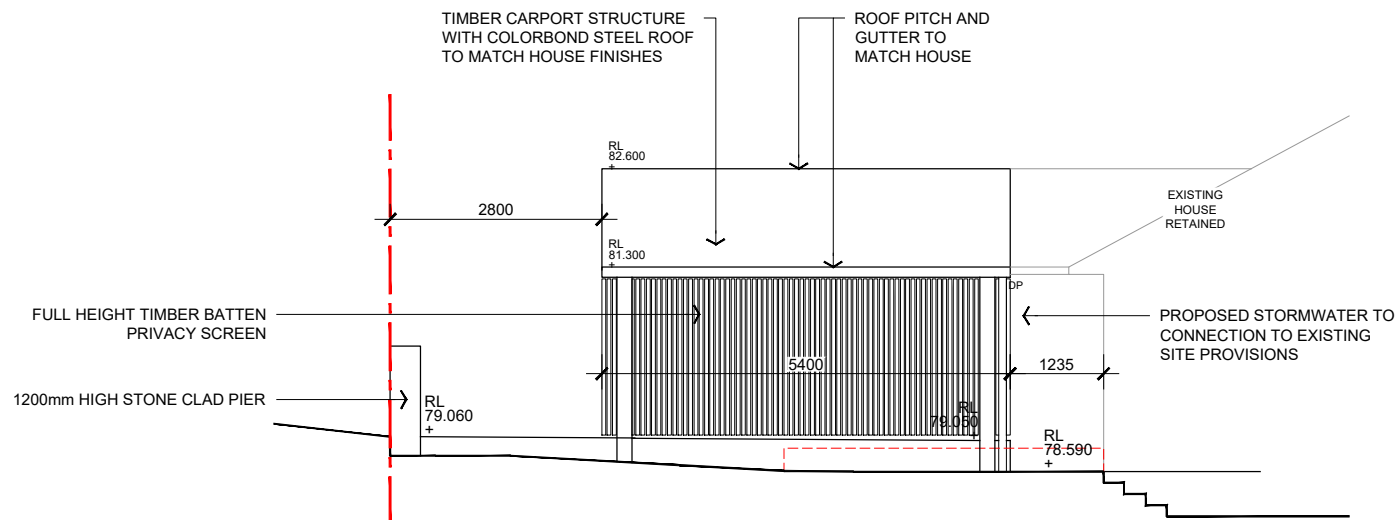
ELEVATION 02 - WEST

Scale: 1:100@A3

 northern
beaches
council

**THIS PLAN IS TO BE READ IN
CONJUNCTION WITH
THE CONDITIONS OF DEVELOPMENT
CONSENT**

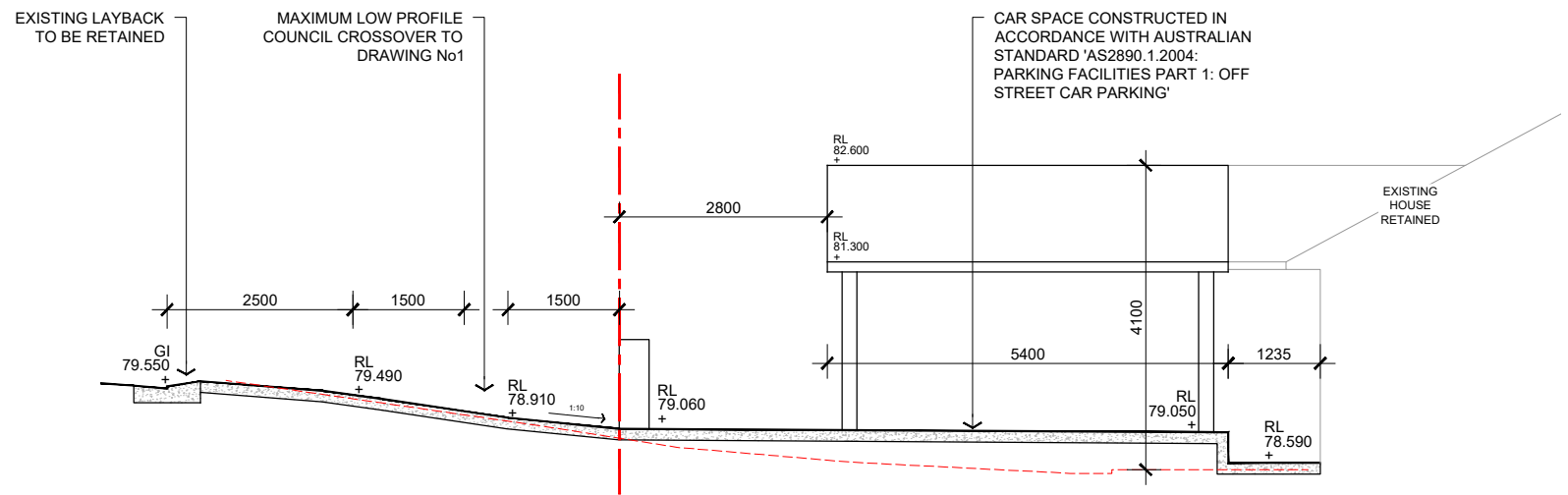
DA2025/0129



EL03
LPL_1101

ELEVATION 03 - SOUTH

Scale: 1:100@A3



SE01
LPL_1101

SECTION 01 - CROSSOVER

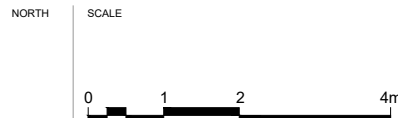
Scale: 1:100@A3

LONE
PINE
LANDSCAPES

531 Sydney Road Seaforth | 02 9907 0988 | www.lonepinelandscapes.com.au

- NOTES
- DO NOT SCALE DRAWINGS. USE FIGURED DIMENSIONS ONLY.
 - DIMENSIONS ARE IN MILLIMETRES UNLESS NOTATED DIFFERENTLY.
 - CHECK AND VERIFY LEVELS AND DIMENSIONS ON SITE PRIOR TO COMMENCEMENT OF ANY WORK.
 - THIS DRAWING IS COPYRIGHT OF LONE PINE LANDSCAPES
 - THIS DRAWING MAY NOT BE REPRODUCED, ALTERED OR TRANSMITTED IN ANY FORM WITHOUT PERMISSION.
 - THIS DRAWING ISSUE IS NOT FOR CONSTRUCTION

02	SET-BACKS UPDATED	31.03.25
01	ISSUED FOR DEVELOPMENT APPLICATION	16.12.24
REV	DESCRIPTION	DATE



PROJECT
HODGES / CASTILLO
13 PRINCE EDWARD ROAD
SEAFORTH
2092

DRAWING TITLE
SECTIONS & ELEVATIONS

STATUS DEVELOPMENT APPLICATION			
SCALE @ A3 1:100	DRAWN CN	REVIEWED NR	APPROVED RF
PROJECT NUMBER LPL_2730	DRAWING NUMBER LPL_2001	REV 02	