

NOTES

1. COPYRIGHT This drawing and/or design is the property of Harrison Friedmann & Associates Pty Ltd and should not be reproduced in part or whole without the written permission of the company.
 2. Bearings, distances and areas of boundaries are from Land & Property Information records unless stated otherwise. Bearings shown are orientated to Magnetic Meridian. Approximate True North is shown above. If accurate True North is required a further survey would be necessary.
 3. The 'Detail Survey' (Clause 31) has been prepared for planning and assessment purposes only under the accepted arrangement between the Client and the Registered Land Surveyor and shows the position of boundaries as determined at the date of survey. It is agreed that the accurate dimensions, area and relative location of the boundaries of the land are not required for the intended purpose of this plan. It is not appropriate to measure or compare in CAD, nor scale any distances either to or from the approximate boundary line shown on this plan. Where offsets are critical they should be verified by an additional survey and/or placement of marks.
 4. The services information shown on this plan have been determined from visual inspection, and for underground services, from plans received from a 'Dig Before You Dig (DBYD)' search. The position of the underground services shown herein has been plotted approximately based on this information, however it should be used as a guide only and cannot be relied upon.
 5. The location of Sydney Water's Sewer Main has been plotted approximately, based on information from Sydney Water. This information can not be relied on. Any construction near Sydney Water Mains requires further investigation, a Service Protection Report (sewer pegout) and approval from Sydney Water.
 6. The locations of spot levels are diagrammatic only. They are accurate for position to a 0.3m in relation to boundaries. Levels critical to design, excavation or construction must be verified. If contours are shown they depict the topography rather than represent the exact level at any particular point. Care should be taken if extrapolating levels or contours.
 7. The spread of the crown of the trees and trunk diameters shown on this plan are diagrammatic only, based on the average spread and trunk size observed in the field. Prior to any development proposal which might be affected by trees it is recommended that the tree spreads and diameters be verified by field inspection.
 8. Australian Height Datum was established from SSM 47186 - RL 35.191 (AHD). Source: SCMS 23 July 2024.
- ALL ABOVE NOTES ARE AN INTEGRAL PART OF THIS PLAN**
- WARNING!** The location of walls and detail points in relation to boundaries is approximate only!

David John Treman
DAVID JOHN TREMAN
REGISTERED SURVEYOR ID 2117

Legend

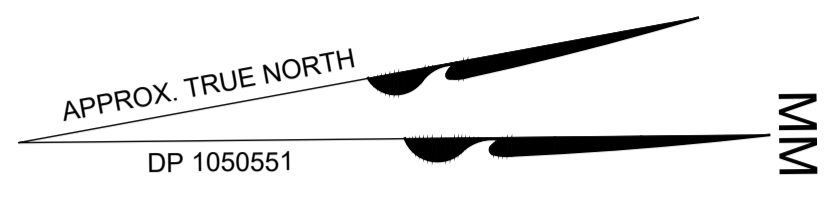
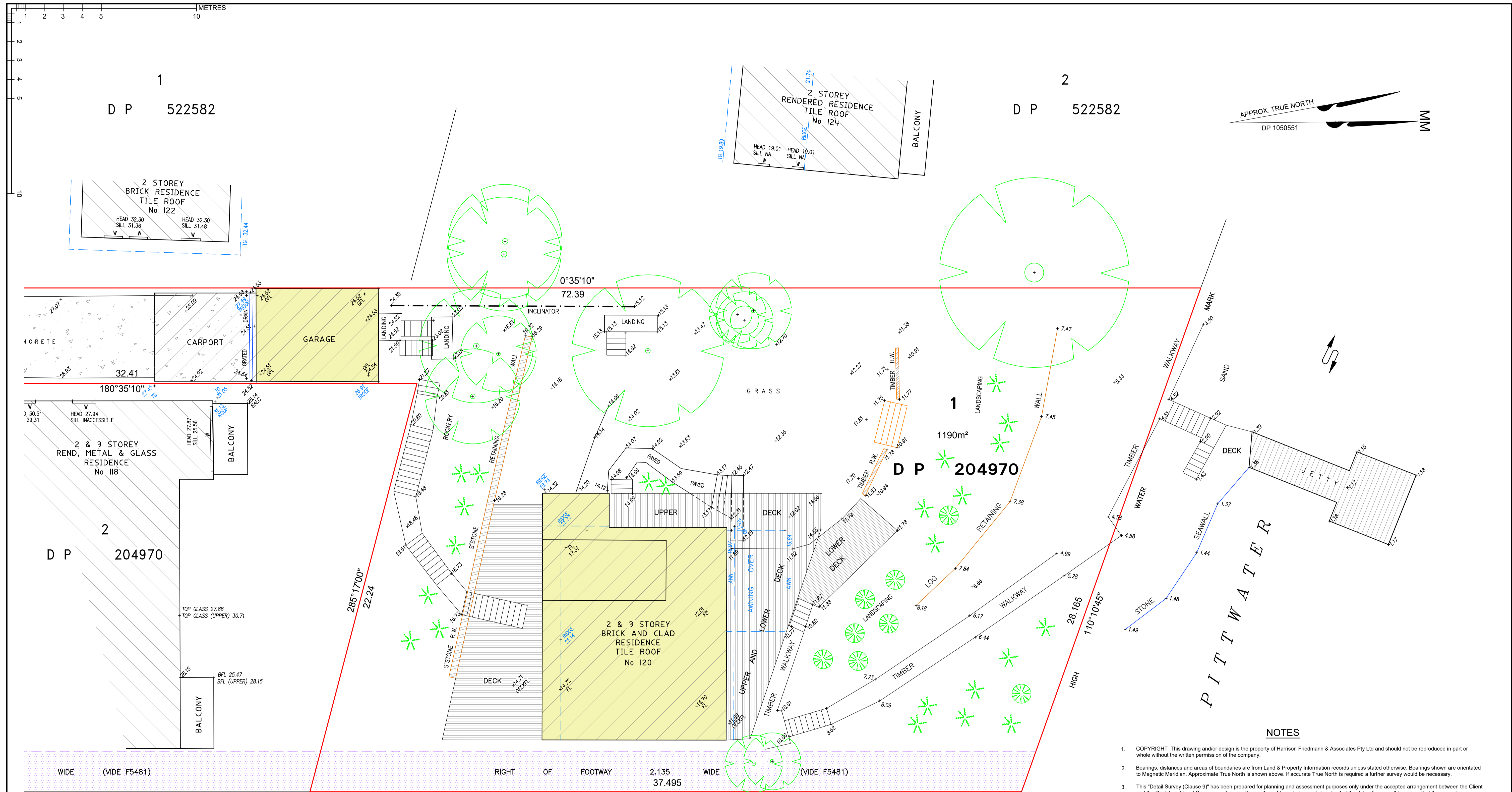
BB	Bottom of Bank	G	Grave	TP	Top of Pile	UW	Upper Window	ML	Metal Lid
BFLL	Bottom Floor Level	GFL	Garage Floor Level	TK	Top of Terrace	VC	Vehicle Crossing	MH	Man Hole
BRW	Bottom Retaining Wall	GL	Ground Level	TK	Top of Terrace	VCFL	Vehicle Crossing Floor Level	MW	Monitoring Well
BK	Bottom of Rock	IVL	Invert Level	TP	Top of Pole	WP	Water Pipe	PP	Power Pole
CONC	Concrete	LW	Lower Window	TR	Top of Rock	WM	Water Meter	SP	Sign Pole
EC	Edge of Concrete	PC	Pedestrian Crossing	TRW	Top Retaining Wall	WM	Water Meter	SV	Stop Valve
FL	Flag Level	PAR	Parapet	TRW	Top Retaining Wall	WM	Water Meter	TS	Tie Rod
FP	Flag side	TL	Top Wall	TRW	Top Retaining Wall	WM	Water Meter	T	Tie Rod
		US	Underside of Slab	USG	Underside of Gutter	WM	Water Meter	TL	Top of Light
		USG	Underside of Gutter	USG	Underside of Gutter	WM	Water Meter	TL	Top of Light

HARRISON FRIEDMANN & ASSOCIATES PTY LTD
INCORPORATED THE PRACTICE OF MICHAEL J STYRIS
SURVEYORS, ENGINEERS, PLANNERS,
BUILDING & ENVIRONMENTAL CONSULTANTS
WATER SERVICES CO-ORDINATOR FOR SYDNEY WATER
P.O. BOX 4628, ROSEBAY BAY, N.S.W. 2127 368 PRINCIPLES HIGHWAY, CARLTON, N.S.W. 2111
PHONE: (02) 8588 7100
FAX: (02) 3546 4418
EMAIL: mail@hfasurveyors.com.au

PLAN SHOWING SITE DETAILS, LEVELS AND INTERNALS
FOR BUILDING DESIGN PURPOSES
AT 120 MCCARRS CREEK ROAD, CHURCH POINT
LOT 1 IN DP 204970

REDUCTION RATIO	1:100 @ A0	SURVEYED/DRAWN	AC/CM
DATUM	A.H.D.	CHECKED	
DATE	26/07/2024	REFERENCE	80346DT
		SHEET	1 OF 4

FOR ETIC



NOTES

- COPYRIGHT This drawing and/or design is the property of Harrison Friedmann & Associates Pty Ltd and should not be reproduced in part or whole without the written permission of the company.
- Bearings, distances and areas of boundaries are from Land & Property Information records unless stated otherwise. Bearings shown are orientated to Magnetic Meridian. Approximate True North is shown above. If accurate True North is required a further survey would be necessary.
- This "Detail Survey (Clause 9)" has been prepared for planning and assessment purposes only under the accepted arrangement between the Client and the Registered Land Surveyor and shows the position of boundaries as determined at the date of survey. It is agreed that the accurate dimensions, area and relative location of the boundaries of the land are not required for the intended purpose of this plan. It is not appropriate to measure or enquire in CAD, nor scale any distances either to or from the approximate boundary line shown on this plan. Where offsets are critical they should be verified by an additional survey and/or placement of marks.
- The services information shown on this plan have been determined from visual inspection, and for underground services, from plans received from this information, however it should be used as a guide only and cannot be relied upon.
- The location of Sydney Water's Sewer Main has been plotted approximately, based on information from Sydney Water. This information can not be relied on. Any construction near Sydney Water Mains requires further investigation, a Service Protection Report (sewer pegout) and approval from Sydney Water.
- The locations of spot levels are diagrammatic only. They are accurate for position to ± 0.3m in relation to boundaries. Levels critical to design, excavation or construction must be verified. If contours are shown they depict the topography rather than represent the exact level at any particular point. Care should be taken if extrapolating levels or contours.
- The spread of the crown of the trees and trunk diameters shown on this plan are diagrammatic only, based on the average spread and trunk size observed in the field. Prior to any development proposal which might be affected by trees it is recommended that the tree spreads and diameters be verified by field inspection.
- Australian Height Datum was established from SSM 47186 - RL 35.191 (AHD) Source SCIMS 23 July 2024.

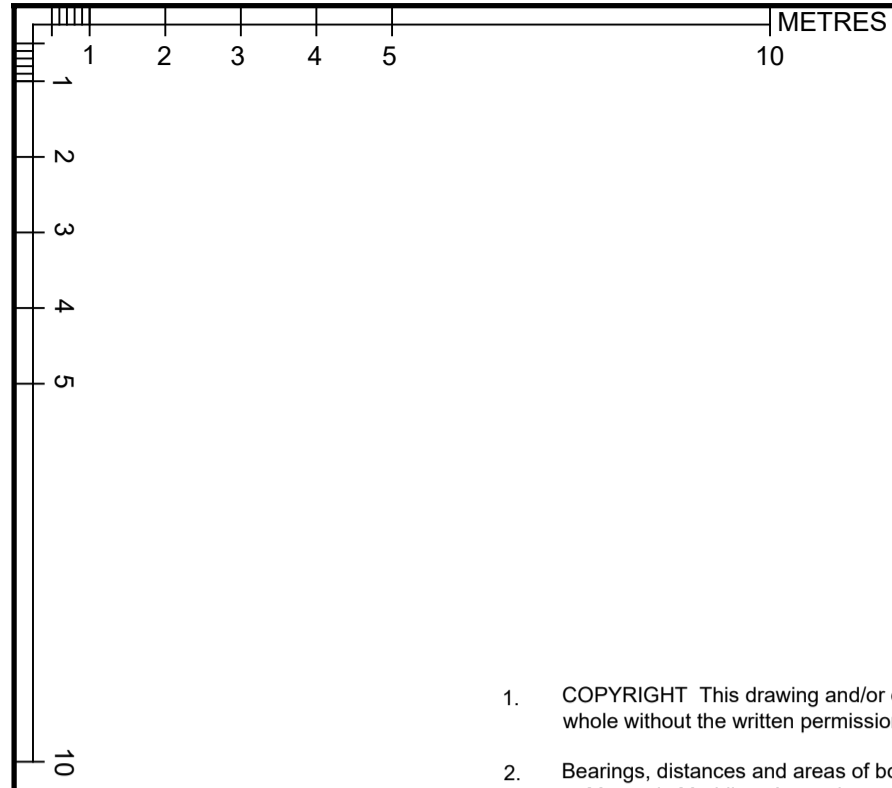
ALL ABOVE NOTES ARE AN INTEGRAL PART OF THIS PLAN
 WARNING! The location of walls and detail points in relation to boundaries is approximate only!

David John Tremain
 DAVID JOHN TREMAIN
 REGISTERED SURVEYOR ID 2117

Legend			
BB	Bottom of Bank	G	Grate
BFL	Balcony Floor Level	CFL	Garage Floor Level
BRW	Bottom Retaining Wall	GM	Gas Meter
BRK	Bottom of Rock	INV	Invert Level
CONC	Concrete	LW	Lower Window
EC	Edge of Concrete	PC	Pedestrian Crossing
FL	Floor Level	PAR	Parapet
FP	Flag pole	RL	Relative Level
		TB	Top of Bank
TF	Top of Fence	UW	Upper Window
TG	Top of Gutter	VC	Vehicle Crossing
TK	Top of Kerb	VFL	Verandah Floor Level
TP	Telstra Pillar	W	Window
TR	Top of Roof	WC	Toilet
TRK	Top of Rock	WM	Water Meter
TRW	Top Retaining Wall	WV	Water Valve
TW	Top Wall	G	Gas
USA	Underside of Awning	H	Hydrant
USG	Underside of Gutter	LH	Lamp Hole
		LP	Light Pole
		ML	Metal Lid
		MH	Man Hole
		MW	Monitoring Well
		PP	Power Pole
		SP	Sign Pole
		SV	Stop Valve
		T	Telstra
		TP	Telstra Pillar
		SW	Approximate Location of Sydney Water Sewer Main (vide Hydrant)

HARRISON FRIEDMANN & ASSOCIATES PTY LTD
 INCORPORATING THE PRACTICE OF MICHAEL J. STYNES
 SURVEYORS, ENGINEERS, PLANNERS,
 BUILDING & ENVIRONMENTAL CONSULTANTS
 WATER SERVICING CO-ORDINATOR FOR SYDNEY WATER
 P.O. BOX 4026, KOGARAH BAY, N.S.W. 2217 365 PRINCES HIGHWAY, CARLTON, N.S.W. 2218
 PHONE: (02) 9558 7100
 FAX: (02) 9546 4418
 EMAIL: mail@hfasurveyors.com.au

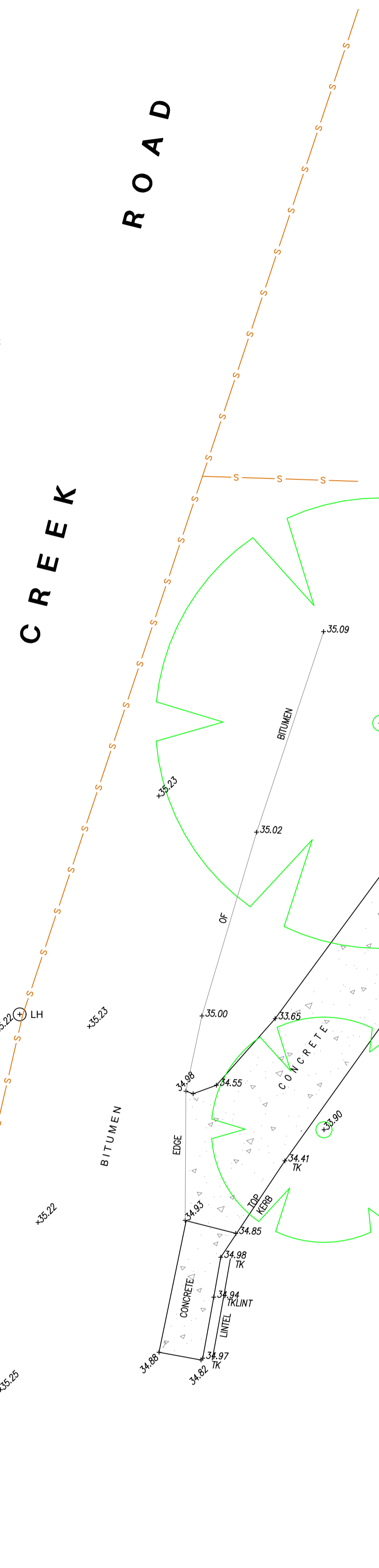
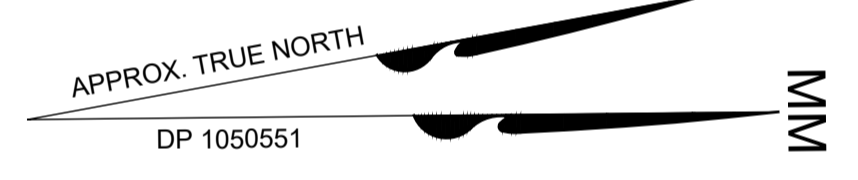
PLAN SHOWING SITE DETAILS, LEVELS AND INTERNALS FOR BUILDING DESIGN PURPOSES AT 120 McCARRS CREEK ROAD, CHURCH POINT LOT 1 IN DP 204970		REDUCTION RATIO 1:100 @ A1	SURVEYED / DRAWN AC/CM
		DATUM A.H.D.	CHECKED DT
		DATE 26/07/2024	REFERENCE 80346DT SHEET 2 OF 4
		FOR ETIC	



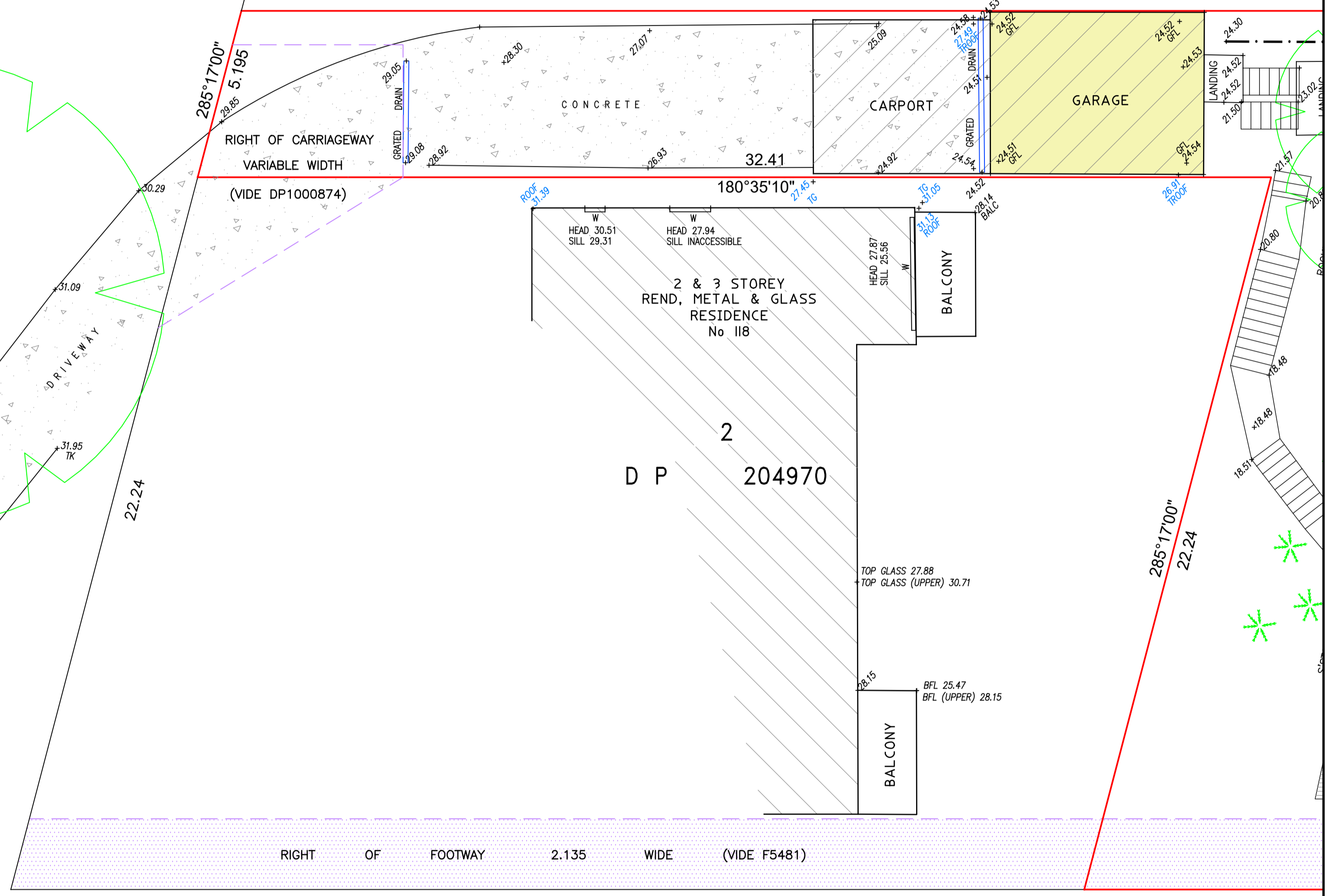
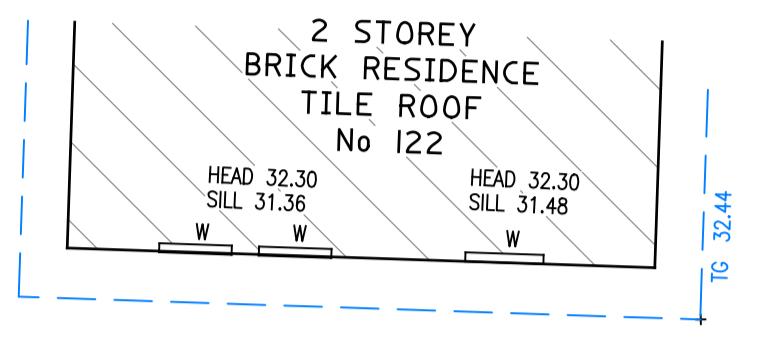
NOTES

- COPYRIGHT This drawing and/or design is the property of Harrison Friedmann & Associates Pty Ltd and should not be reproduced in part or whole without the written permission of the company.
- Bearings, distances and areas of boundaries are from Land & Property Information records unless stated otherwise. Bearings shown are orientated to Magnetic Meridian. Approximate True North is shown above. If accurate True North is required a further survey would be necessary.
- This "Detail Survey (Clause 9)" has been prepared for planning and assessment purposes only under the accepted arrangement between the Client and the Registered Land Surveyor and shows the position of boundaries as determined at the date of survey. It is agreed that the accurate dimensions, area and relative location of the boundaries of the land are not required for the intended purpose of this plan. It is not appropriate to measure or enquire in CAD, nor scale any distances either to or from the approximate boundary line shown on this plan. Where offsets are critical they should be verified by an additional survey and/or placement of marks.
- The services information shown on this plan have been determined from visual inspection, and for underground services, from plans received from a "Dial Before You Dig (DBYD)" search. The position of the underground services shown hereon has been plotted approximately based on this information, however it should be used as a guide only and cannot be relied upon.
- The location of Sydney Water's Sewer Main has been plotted approximately, based on information from Sydney Water. This information can not be relied on. Any construction near Sydney Water Mains requires further investigation, a Service Protection Report (sewer pegout) and approval from Sydney Water.
- The locations of spot levels are diagrammatic only. They are accurate for position to ± 0.3m in relation to boundaries. Levels critical to design, excavation or construction must be verified. If contours are shown they depict the topography rather than represent the exact level at any particular point. Care should be taken if extrapolating levels or contours.
- The spread of the crown of the trees and trunk diameters shown on this plan are diagrammatic only, based on the average spread and trunk size observed in the field. Prior to any development proposal which might be affected by trees it is recommended that the tree spreads and diameters be verified by field inspection.
- Australian Height Datum was established from SSM 47186 - RL 35.191 (AHD) Source SCIMS 23 July 2024.

ALL ABOVE NOTES ARE AN INTEGRAL PART OF THIS PLAN
WARNING! The location of walls and detail points in relation to boundaries is approximate only!



1
 D P 522582



David John Tremain
 DAVID JOHN TREMAIN
 REGISTERED SURVEYOR ID 2117

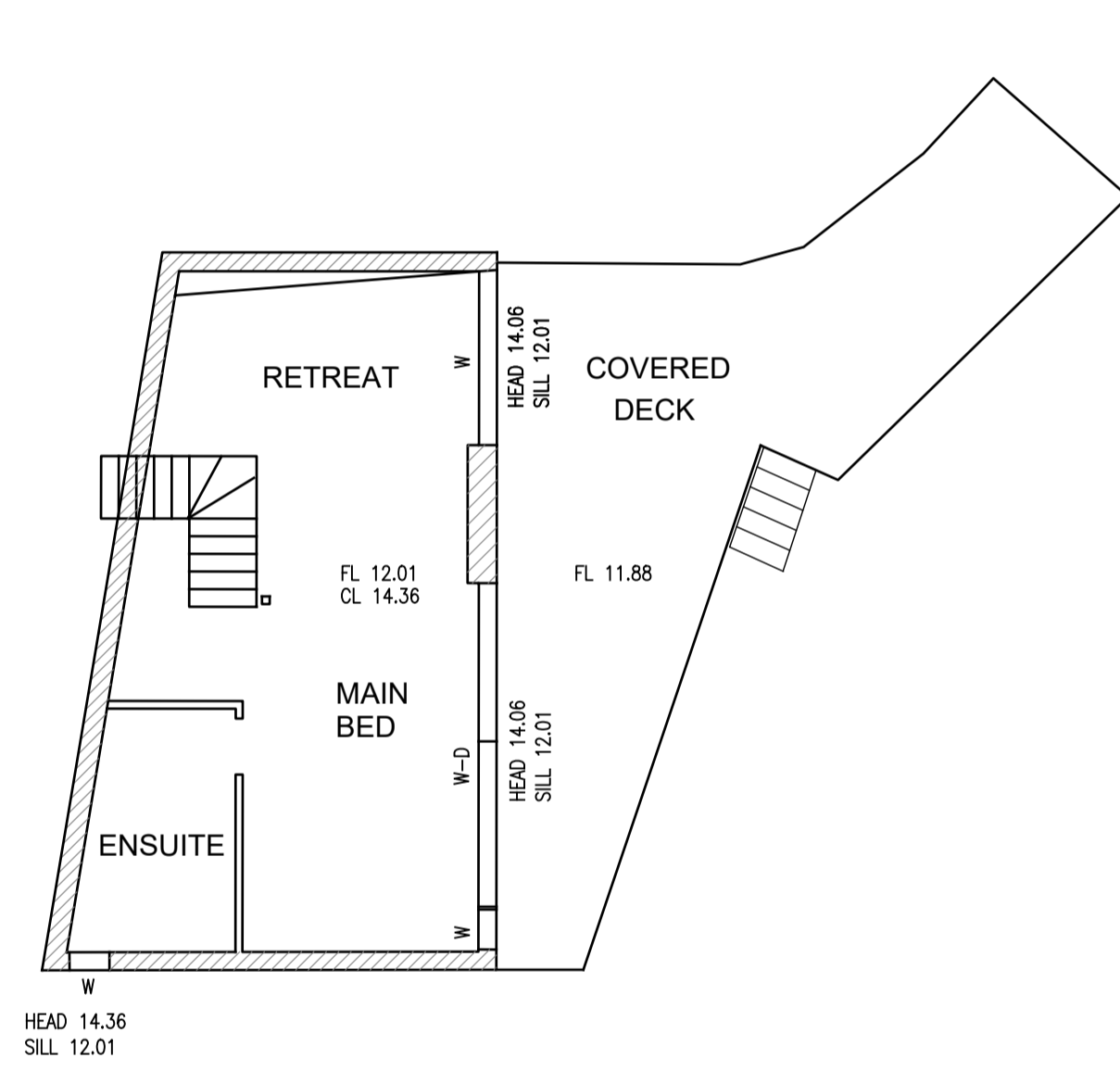
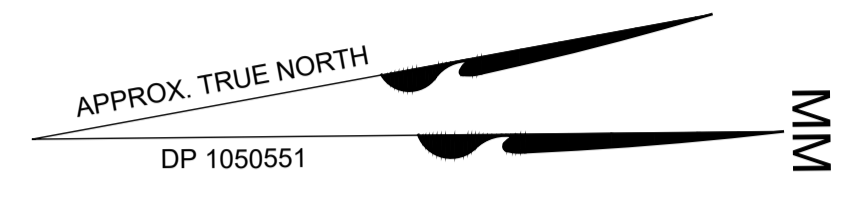
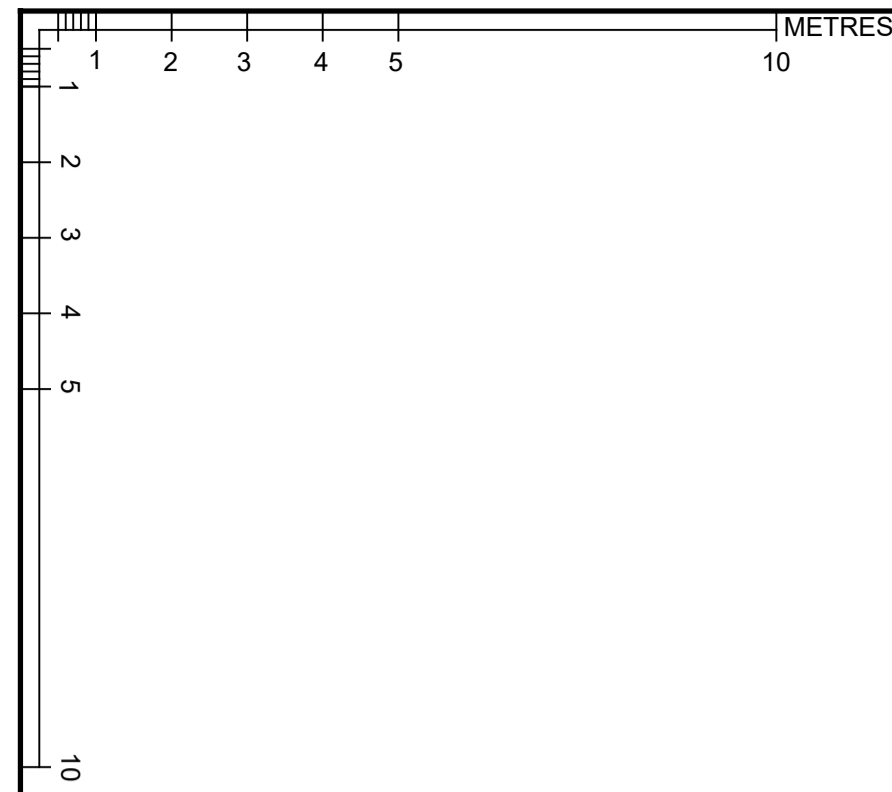
Legend			
BB	Bottom of Bank	G	Grate
BFL	Balcony Floor Level	GFL	Garage Floor Level
BRW	Bottom Retaining Wall	GM	Gas Meter
BRK	Bottom of Rock	INV	Invert Level
CONC	Concrete	LW	Lower Window
EC	Edge of Concrete	PC	Pedestrian Crossing
FL	Floor Level	PAR	Parapet
FP	Flag pole	RL	Relative Level
		TB	Top of Bank
IF	Top of Fence	UW	Upper Window
TG	Top of Gutter	VC	Vehicle Crossing
TK	Top of Kerb	VFL	Verandah Floor Level
TP	Telstra Pillar	W	Window
TR	Top of Roof	WC	Toilet
TRK	Top of Rock	WM	Water Meter
TRW	Top Retaining Wall	WM	Water Meter
TW	Top Wall	G	Gas
USA	Underside of Awning	H	Hydrant
USG	Underside of Gutter	LH	Lamp Hole
		LP	Light Pole
		ML	Metal Lid
		MH	Man Hole
		MW	Monitoring Well
		PP	Power Pole
		SP	Sign Pole
		SV	Stop Valve
		T	Telstra
		TP	Telstra Pillar
		U	Approximate Location of Sydney Water Sewer Main (vide Hydrant)

HARRISON FRIEDMANN & ASSOCIATES PTY LTD
 INCORPORATING THE PRACTICE OF MICHAEL J. STYNES
 SURVEYORS, ENGINEERS, PLANNERS,
 BUILDING & ENVIRONMENTAL CONSULTANTS
 WATER SERVICING CO-ORDINATOR FOR SYDNEY WATER
 P.O. BOX 4028, KOGARAH BAY, N.S.W. 2217 365 PRINCES HIGHWAY, CARLTON, N.S.W. 2218
 PHONE: (02) 8558 7100
 FAX: (02) 9546 4418
 EMAIL: mail@hfasurveyors.com.au

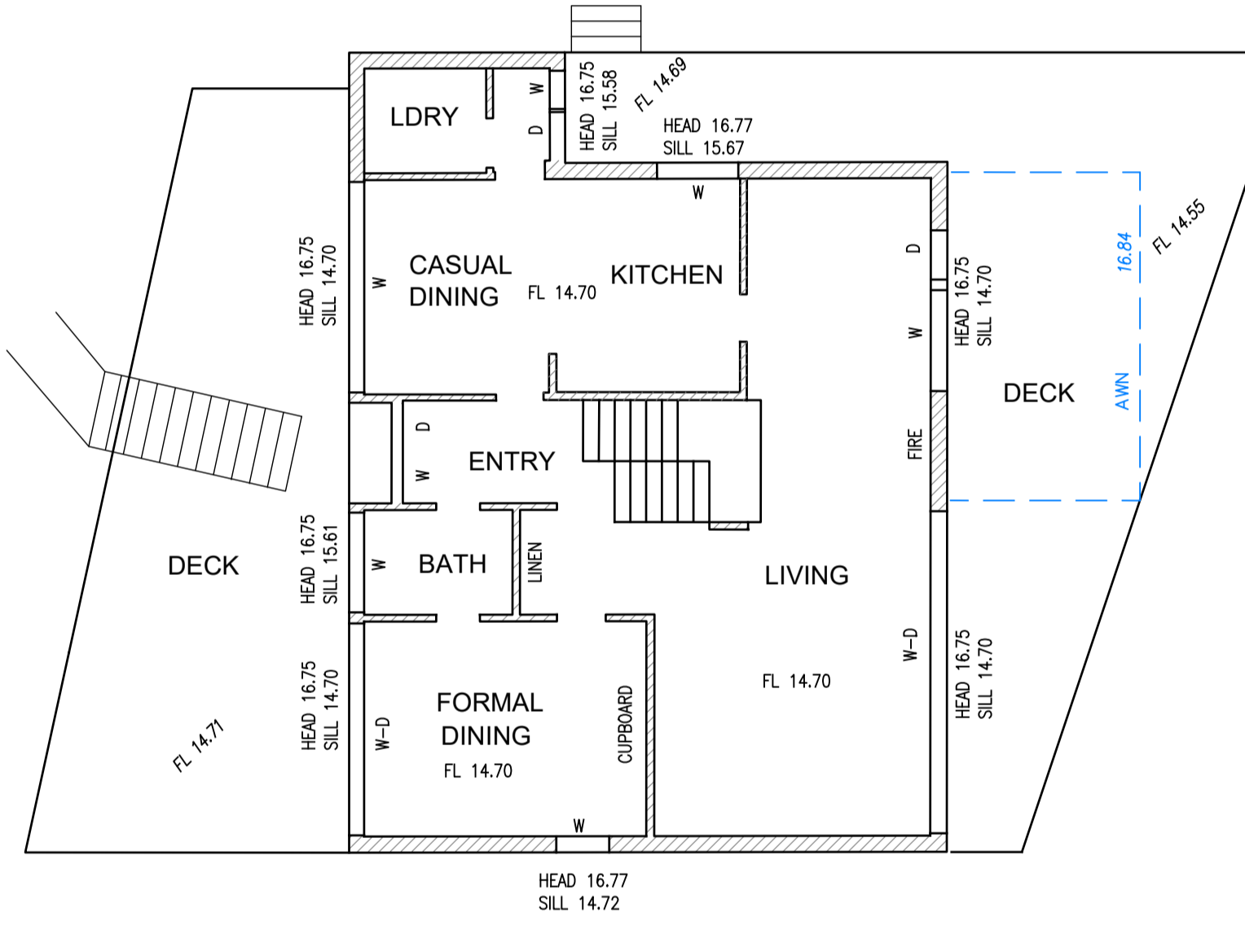
PLAN SHOWING SITE DETAILS, LEVELS AND INTERNALS
 FOR BUILDING DESIGN PURPOSES
 AT 120 McCARRS CREEK ROAD, CHURCH POINT
 LOT 1 IN DP 204970

REDUCTION RATIO	SURVEYED / DRAWN
1:100 @ A1	AC/CM
DATUM	CHECKED
A.H.D.	DT
DATE	REFERENCE
26/07/2024	80346DT
	SHEET 3 OF 4

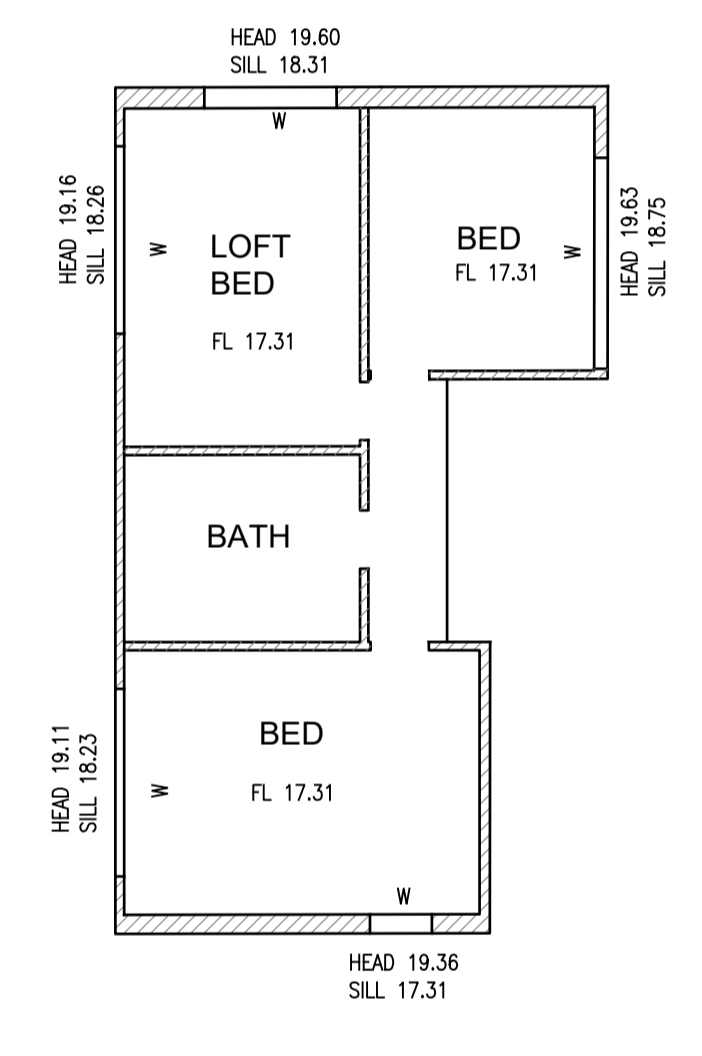
FOR ETIC



LOWER LEVEL



ENTRY LEVEL



LEVEL 1

David Tremain
 DAVID JOHN TREMAIN
 REGISTERED SURVEYOR ID 2117

Legend			
BB Bottom of Bank	G Grate	TF Top of Fence	UW Upper Window
BFL Balcony Floor Level	GFL Garage Floor Level	TG Top of Gutter	VC Vehicle Crossing
BRW Bottom Retaining Wall	GM Gas Meter	TK Top of Kerb	VFL Verandah Floor Level
BRK Bottom of Rock	INV Invert Level	W Window	W Window
CONC Concrete	LW Lower Window	TP Telstra Pillar	WC Water Meter
EC Edge of Concrete	PC Pedestrian Crossing	TR Top of Roof	WM Water Meter
FL Floor Level	PAR Parapet	TRK Top of Rock	G GAS
FP Flag pole	RL Relative Level	TRW Top Retaining Wall	H Hydrant
	TB Top of Bank	TW Top Wall	LH Lamp Hole
		USA Underside of Awning	LP Light Pole
		USG Underside of Gutter	ML Metal Lid
			MH Man Hole
			MW Monitoring Well
			PP Power Pole
			SP Sign Pole
			SV Stop Valve
			T Telstra
			T Telstra Pillar
			Approximate Location of Sydney Water
			Sewer Main (vide Hydra)

HARRISON FRIEDMANN & ASSOCIATES PTY LTD
 INCORPORATING THE PRACTICE OF MICHAEL J. STYNES
 SURVEYORS, ENGINEERS, PLANNERS,
 BUILDING & ENVIRONMENTAL CONSULTANTS
 WATER SERVICING CO-ORDINATOR FOR SYDNEY WATER
 P.O. BOX 4026, KOGARAH BAY, N.S.W. 2217 365 PRINCES HIGHWAY, CARLTON, N.S.W. 2218
 PHONE: (02) 8558 7100
 FAX: (02) 9546 4418
 EMAIL: mail@hfasurveyors.com.au

Liability limited by a scheme approved under Professional Standards Legislation

PLAN SHOWING SITE DETAILS, LEVELS AND INTERNALS FOR BUILDING DESIGN PURPOSES AT 120 McCARRS CREEK ROAD, CHURCH POINT LOT 1 IN DP 204970

FOR ETIC

REDUCTION RATIO 1:100 @ A1	SURVEYED / DRAWN AC/CM
DATUM A.H.D.	CHECKED DT
DATE 26/07/2024	REFERENCE 80346DT SHEET 4 OF 4