

# Flower Power Terrey Hills

Landscape Development Application Design Report

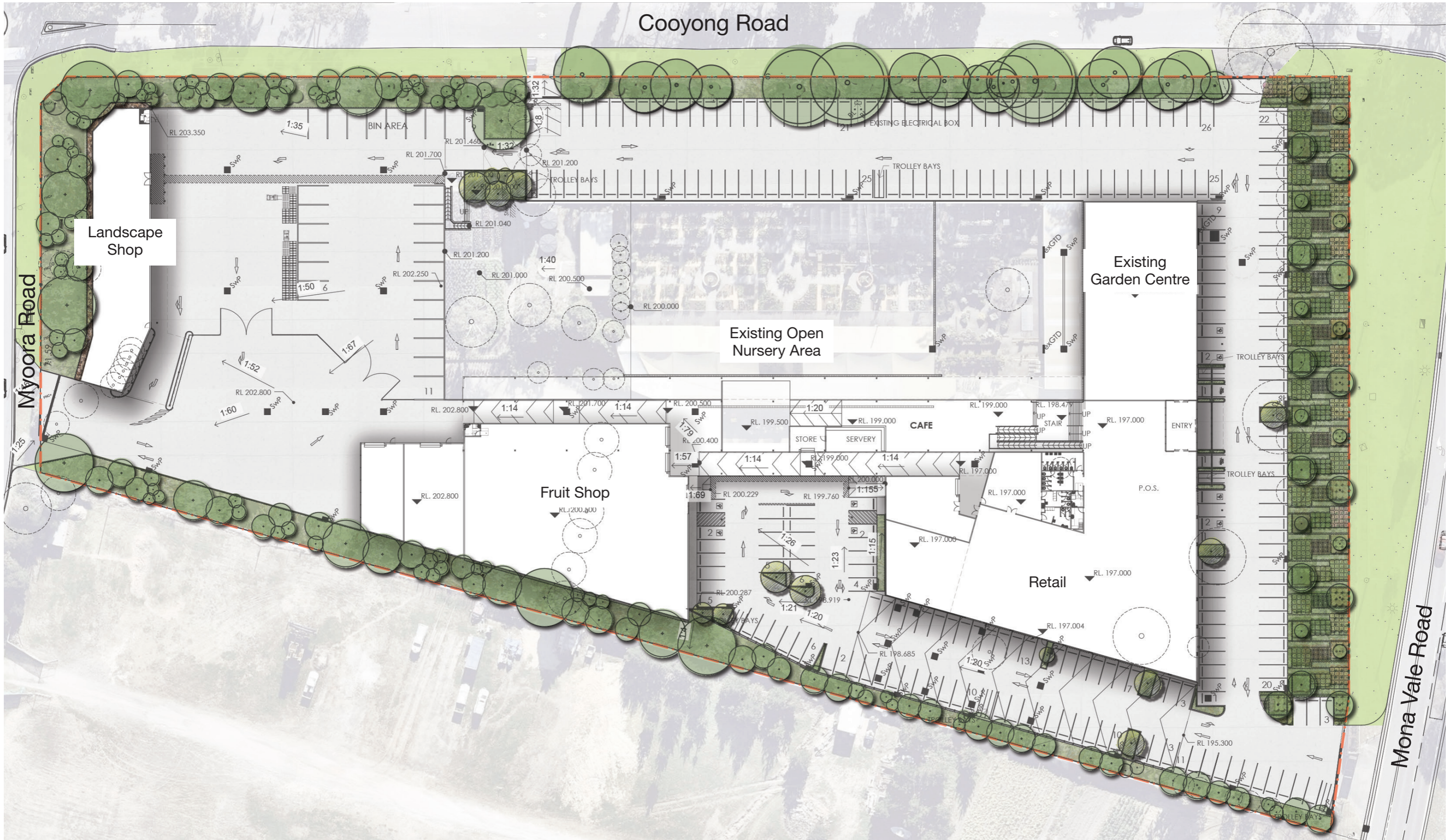
May 2023



SITE IMAGE  
Landscape Architects



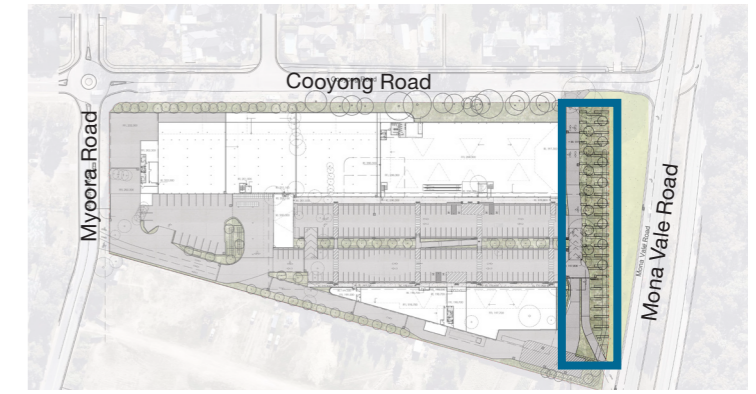
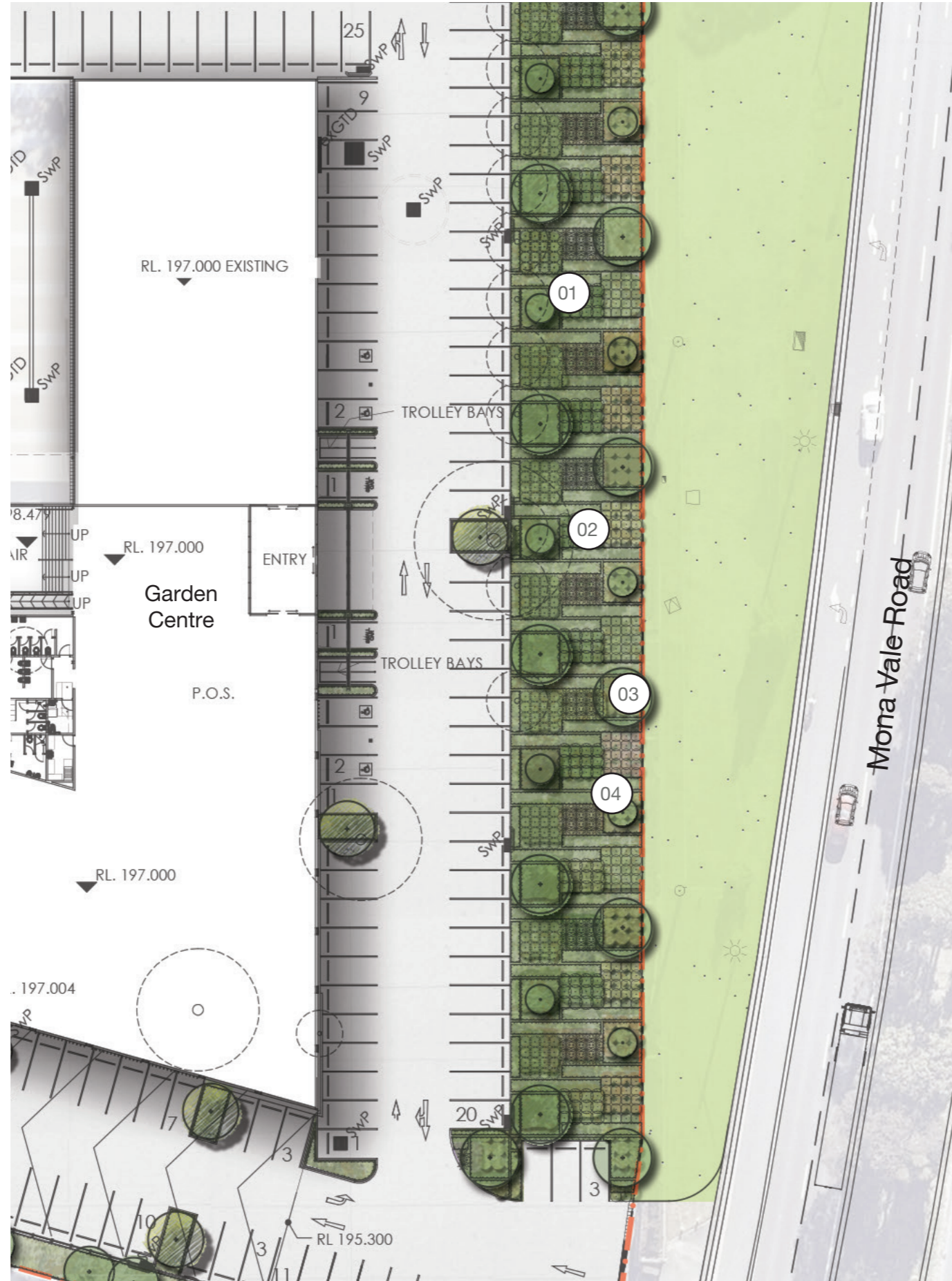
# Landscape | Site Plan



# Landscape | Frontage

## Mona Vale Road

Along Mona Vale Road a frontage of presentation planting is proposed. Planting will consist of a variety of native and exotic grass groundcover and shrub species in blocks. Tree planting will feature along the length of the frontage.



KEY PLAN



02 Banding and block planting of native species



01 Banding and block planting of native species



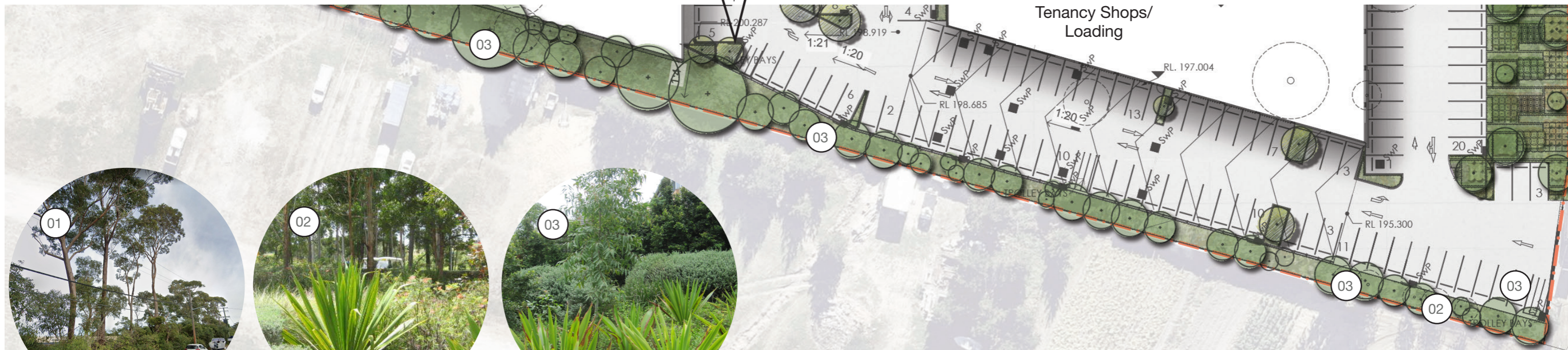
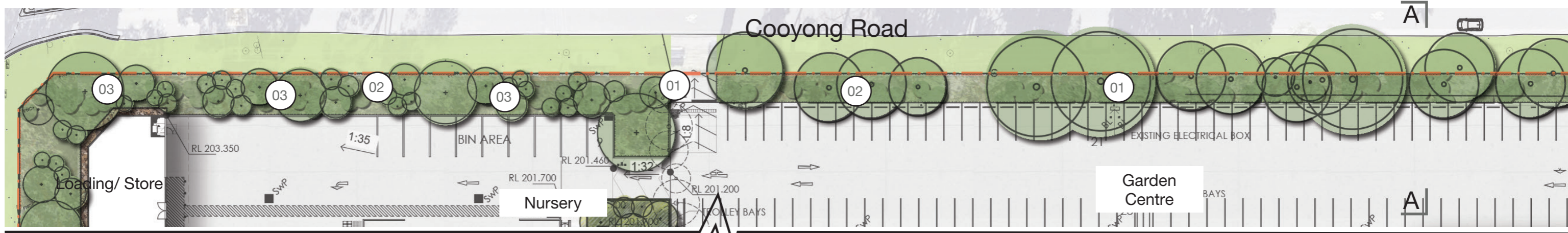
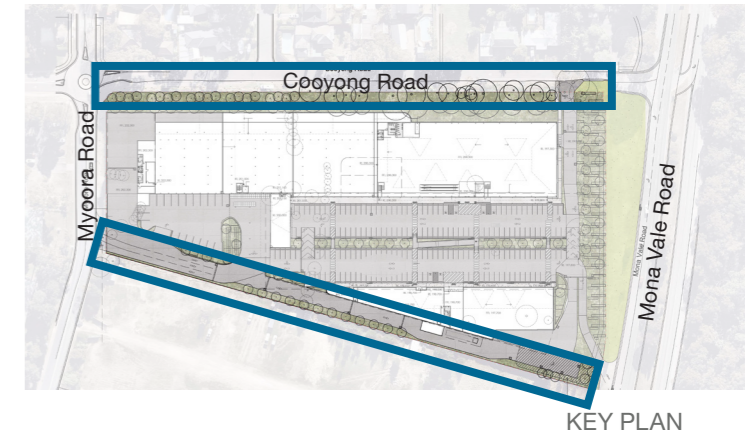
03 Tree planting

04 Proposed signage

# Landscape | Boundaries

## Cooyong Rd & Southern Boundary

Planting to the boundaries shall complement existing trees. Additional tree planting will soften the frontages with mass planting of predominately native grasses groundcovers and shrubs to the understory.



Existing Cooyong Rd trees to be retained



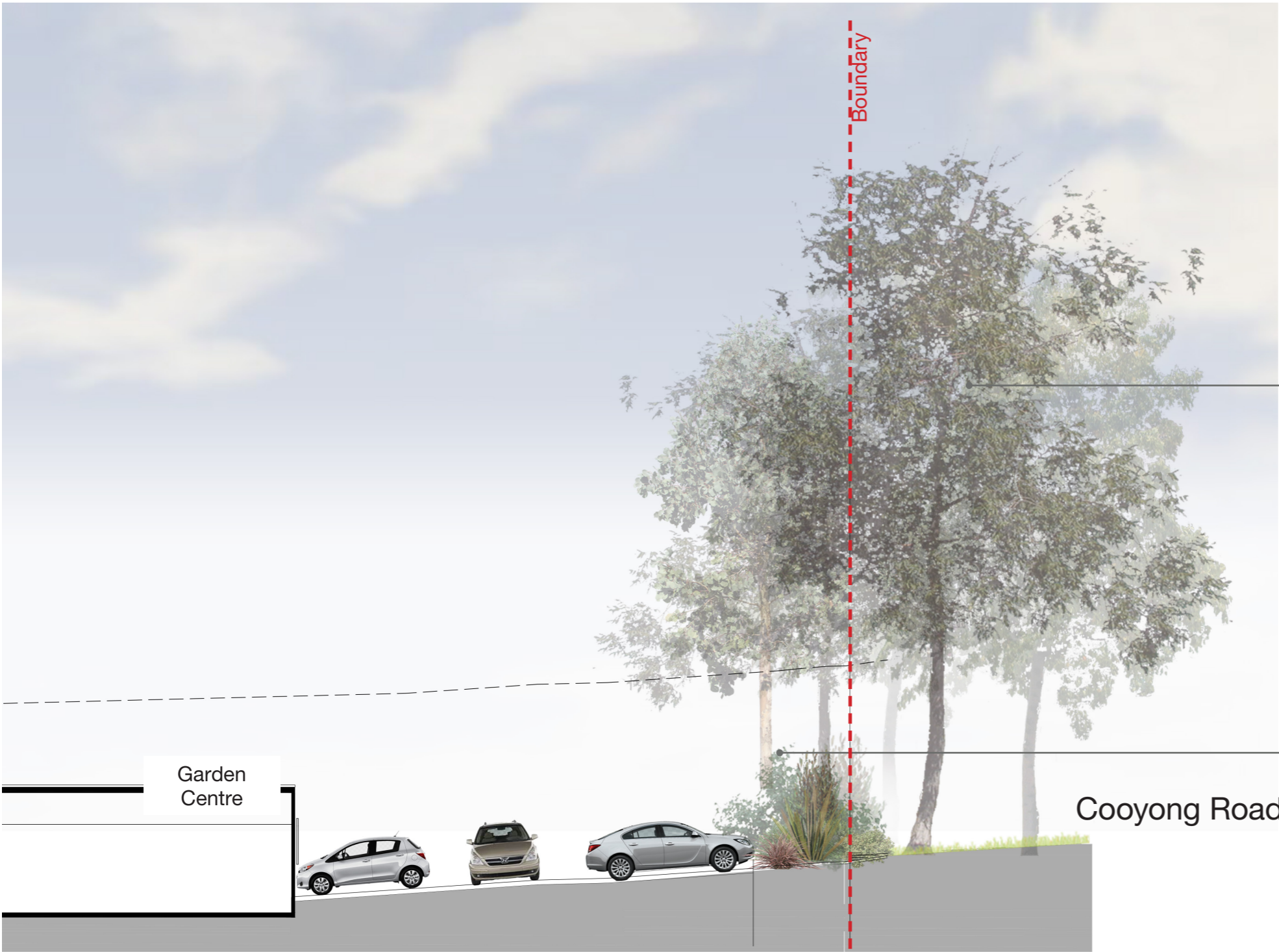
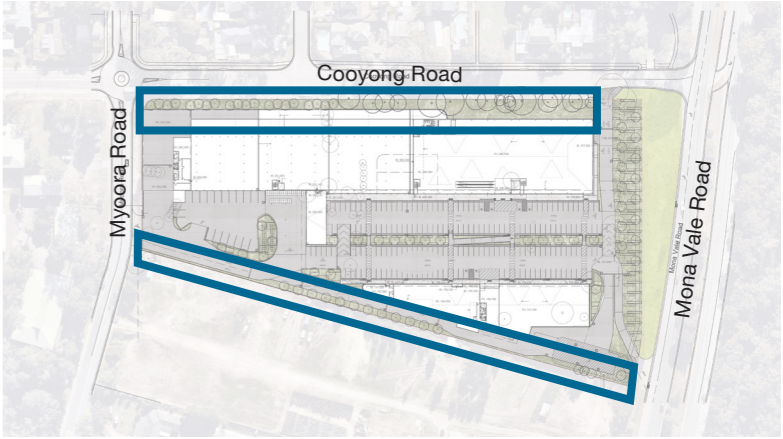
Proposed native grass groundcover and shrub understory planting



Additional infill tree planting to boundaries



# Landscape | Boundary Section



Retain and protect existing trees where possible

Mixture of native shrubs, grasses and groundcovers

Section A-A

# Landscape | Plant Schedule

## Carpark Trees

<i>Cupaniopsis anacardioides</i>	Tuckeroo	7 x 5	As Shown	100L
<i>Elaeocarpus reticulatus</i>	Blueberry Ash	10 x 4	As Shown	100L
<i>Melaleuca decora</i>	White Feather Honeymyrtle	6 x 3	As Shown	100L
<i>Melaleuca quinquenervia</i>	Paperbark	12 x 6	As Shown	100L
<i>Tristanopsis laurina</i>	Water Gum	10 x 5	As Shown	100L

## Boundary Trees

<i>Angophora floribunda</i>	Rough-barked Angophora		As Shown	45L
<i>Backhousia myrtifolia</i>	Grey Myrtle		As Shown	45L
<i>Banksia integrifolia</i>	Coast Banksia		As Shown	45L
<i>Casuarina glauca</i>	Swamp She-oak		As Shown	45L
<i>Corymbia gummifera</i>	Red Bloodwood		As Shown	45L
<i>Corymbia maculata</i>	Spotted Gum		As Shown	45L
<i>Eucalyptus haemastoma</i>	Scribbly Gum		As Shown	45L
<i>Melaleuca stypheloides</i>	Prickly-leaved Paperbark		As Shown	45L
<i>Syzygium glomulifera</i>	Turpentine		As Shown	45L
<i>Synoum glandulosum</i>	Scentless Rosewood		As Shown	45L
<i>Syzygium paniculatum</i>	Magenta Lilly Pilly		As Shown	45L
<i>Syzygium smithii</i>	Common Lilly Pilly		As Shown	45L

## Shrubs and Accents

<i>Acmena smithii</i> 'Minor'	Dwarf Lilly Pilly	4 x 2	As Shown	300mm
<i>Acacia</i> 'Limelight'	Acacia Limelight	0.5 x 0.5	As Shown	300mm
<i>Doryanthes exceisa</i>	Gynea Lily	3 x 2	As Shown	200mm
<i>Loropetalum chinense Rubrum</i>	Chinese Fringe Flower	1 x 1	As Shown	200mm
<i>Melaleuca linariifolia</i> 'Claret Tops'	Honey Myrtle	1 x 1	As Shown	200mm
<i>Photinia glabra</i> 'Rubens'	Japanese Photinia	4 x 2	As Shown	300mm
<i>Phormium tenax</i>	New Zealand Flax	3 x 1.5	As Shown	200mm
<i>Philodendron Xanadu</i>	Xanadu	.8 x 1	As Shown	200mm
<i>Westringia</i> 'Wynyabbie Gem'	Coastal Rosemary	2 x 2	As Shown	200mm

## Groundcovers / Grasses

<i>Carpobrotus glaucescens</i>	Pigface	.2 x 1	5/m2	150mm
<i>Carex appressa</i>	Tall sedge	.8 x 1	5/m2	150mm
<i>Dianella caerulea</i> 'Breeze'	Breeze Paroo Lily	.6 x .6	5/m2	150mm
<i>Hardenbergia violacea</i> 'Rosea'	Native Sarsaparilla	2 x 1	5/m2	150mm
<i>Hibbertia scandens</i>		.5 x 1	5/m2	150mm
<i>Lomandra longifolia</i>	Mat Rush	.7 x 1	5/m2	150mm
<i>Myoporum parvifolium</i> 'Yareena'	Yareena Myoporum	1.5	5/m2	150mm
<i>Poa labillardieri</i> 'Eskdale'	Tussock Grass	.6 x .6	5/m2	150mm
<i>Trachelospermum jasminoides</i>	Star Jasmine	.2 x .5	5/m2	150mm

## Boundary Planting Matrix

Botanical Name	Common Name	"Mature Size (h x w)"	"Density /25m2"	Pot Size
<i>Banksia ericifolia</i>	Heath-leaved Banksia	6 x 2	7	150mm
<i>Callistemon citrinus</i>	Crimson Bottlebrush	1.8 x 1.5	7	150mm
<i>Dodonaea triquetra</i>	Common Hop-Bush	3 x 2	7	150mm
<i>Westringia fruticosa</i>	Coast Rosemary	1 x 1	7	150mm
<i>Melaleuca linearifolia</i>	Snow in Summer	4 x 4	7	150mm
<i>Dianella caerulea</i>	Blue Flax Lily	.4 x .4	10	Tube
<i>Carpobrotus glaucescens</i>	Pig Face	.2 x 1	10	Tube
<i>Hibbertia scandens</i>	Golden Guinea Flower	.2 x 1	10	Tube
<i>Lomandra longifolia</i>	Spiny-headed Mat-rush	.6 x .6	10	Tube



*Cupaniopsis anacardioides*



*Banksia integrifolia*



*Tristanopsis laurina*



*Acmena smithii* 'Minor'



*Melaleuca linariifolia* 'Claret Tops'



*Loropetalum chinense Rubrum*



*Westringia* 'Wynyabbie Gem'



*Lomandra longifolia*



*Carpobrotus glaucescens*