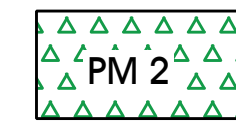


Peninsula Gardens - Indicative Plant Schedule (Page 1 Of 2)



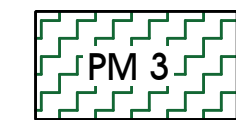
Plant Mix Type 1 - (Total Area= 210m2)

FEATURE EMBANKMENT PLANTING (Mapped as Central Escarpment Moist Forest (CCEMF) Vegetation Community)						
Abbrev	Botanical Name	Common Name	Mature Height (m)	Pot Size	Ratio	Qty
Trees						
LIV aus	Livistona australis	Cabbaget ree palm	20-25	100Lt	1 / 30m2	7
Accents (QTY = Ratio x Area / species)						
MAC com	Macrozamia communis	Burrawang	1.5-2	200mm	0.5 / m2	105
Ferns, Grasses (QTY = Ratio x Area / species)						
FAC nod	Ficinia nodosa	Club rush	0.4	V/cell	5 / m2	525
LOM lon	Lomandra longifolia	Matt Rush	1	V/cell	5 / m2	525



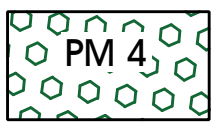
Plant Mix Type 2 - (Total Area= 250m2)

LOW GROUNDCOVER VERGE PLANTING (Mapped as CCEMF Vegetation Community)						
Abbrev	Botanical Name	Common Name	Mature Height (m)	Pot Size	Ratio	Qty
Ferns, Grasses (QTY = Ratio x Area / species)						
FAC nod	Ficinia nodosa	Club rush	0.4	V/cell	5 / m2	625
LOM lon	Lomandra longifolia	Matt Rush	1	V/cell	5 / m2	625



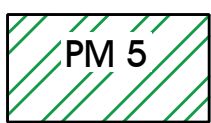
Plant Mix Type 3 - (Total Area = 920m2)

MOSTLY NATIVE FOREST MIX (Mapped as CCEMF Vegetation Community)						
Abbrev	Botanical Name	Common Name	Mature Height (m)	Pot Size	Ratio	Qty
Trees						
ACE smi	Acmena smithii	Lily Pili	10-15	100Lt	1 / 30m2	8
BAN int	Banksia integrifolia	Coast Banksia	4-10	45Lt	1 / 30m2	8
ELA ref	Elaeocarpus reticulatus	Blueberry Ash	10	45Lt	1 / 30m2	8
LIV aus	Livistona australis	Cabbaget ree palm	20-25	100Lt	1 / 15m2	15
Accents (QTY = Ratio x Area / species)						
ACA mol	Acanthus mollis	Oyster Plant	1	140mm	1 / m2	70
ALP cae	Alpinia caerulea	Native Ginger	2	140mm	1 / m2	70
ASP aus	Asplenium australasicum	Bird nest fern	0.5-1.5	140mm	1 / m2	70
CAL dub	Calochlaena dubia	Bracken	0.6-2	140mm	1 / m2	70
CRI ped	Crinum pedunculatum	Swamp Lily	1.2	140mm	1 / m2	70
CYA aus	Cyathea australis	Rough Tree Fern	10	25Lt	0.5 / m2	35
CYA coo	Cyathea cooperi	Cooper's Tree Fern	6	25Lt	0.5 / m2	35
DIC ant	Dicksonia antarctica	Rough tree fern	4-12	25Lt	0.5 / m2	35
DOR exc	Doryanthus excelsa	Gymea Lily	2	140mm	1 / m2	70
HEL bih	Heliconia bihai	Lobster-claws	2-3	140mm	1 / m2	70
LIC ele	Licuala elegans	The Elegant Fan Palm	3-5	200mm	1 / m2	70
MAC com	Macrozamia communis	Burrawang	1.5-2	200mm	1 / m2	70
STR nic	Strelitzia nicolai	Giant White Bird of Paradise	6	200mm	0.5 / m2	35
Shrubs (QTY = Ratio x Area / species)						
ANO gla	Anopterus glandulosus	Native Laurel	2-4	200mm	1 / m2	131
DOD vis P	Dodonaea viscosa 'Purpurea'	Native Hops	4	200mm	1 / m2	131
ERO myo	Erostemon myoperoides	Long Leaf Wax Flower	1	200mm	1 / m2	131
IXO coc	Ixora coccinea	Jungle geranium	1.2-1.8	200mm	1 / m2	131
SYZ leu	Syzygium luehmannii	Small leaved Lilly Pilly	3-5	200mm	1 / m2	131
SYZ ole	Syzygium oleosum	Blue Lilly Pilly	8	200mm	1 / m2	131
VIB odo	Viburnum odoratissimum	Viburnum	3	200mm	1 / m2	131
Ferns, Grasses (QTY = Ratio x Area / species)						
BLE car	Blechnum cartilagineum	gristle fern	0.4	V/cell	5 / m2	418
COM cya	Commelina cyanea	Scurvy Weed		V/cell	5 / m2	418
DOO asp	Doodia aspera	Rasp Fern	0.5	V/cell	5 / m2	418
GAR rad	Gardenia radicans	Prostrate Gardenia	0.48	V/cell	5 / m2	418
HEL gla	Helmholtzia glaberrima	Native stream lily	1-2	V/cell	5 / m2	418
HIB fil	Hibiscus filiceus	Native Hibiscus		V/cell	5 / m2	418
HYP mue	Hypolepis muelleri	Ground Fern		V/cell	5 / m2	418
LOM lon	Lomandra longifolia	Matt Rush	1	V/cell	5 / m2	418
PAN pan	Pandorea pandorana	Wonga Wonga Vine	-	V/cell	5 / m2	418
PTE esc	Pteridium esculentum	Austral Bracken	0.5-1	V/cell	5 / m2	418
SCA ram	Scaevola ramosissima	Purple Fan Flower	0.2	V/cell	5 / m2	418



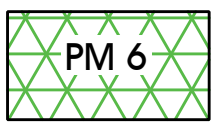
Plant Mix Type 4 - (Total Area = 60m2)

VERGE SCREENING (Mapped as CCEMF Vegetation Community)						
Abbrev	Botanical Name	Common Name	Mature Height (m)	Pot Size	Ratio	Qty
Shrubs (QTY = Ratio x Area / species)						
BAE vir	Baekkea virgata	Weeping Myrtle	1.5	200mm	1 / m2	30
BAN spi	Banksia spinulosa	Hairpin banksia	1	200mm	1 / m2	30
Ferns, Grasses (QTY = Ratio x Area / species)						
FAC nod	Ficinia nodosa	Club rush	0.4	V/cell	5 / m2	100
LOM lon	Lomandra longifolia	Matt Rush	1	V/cell	5 / m2	100
MYO par	Myoporum parvifolium	Creeping Boobialla	0.5	V/cell	5 / m2	100



Plant Mix Type 5 - (Total Area = 340m2)

ACCENT EMBANKMENT PLANTING (Mapped as CCEMF Vegetation Community)						
Abbrev	Botanical Name	Common Name	Mature Height (m)	Pot Size	Ratio	Qty
Accent (QTY = Ratio x Area / species)						
DOR exc	Doryanthus excelsa	Gymea Lily	2	140mm	1 / m2	340
Shrubs (QTY = Ratio x Area / species)						
BAU rub	Bauera rubiodes	River Dog Rose	1.5	140mm	1 / m2	340
Ferns, Grasses (QTY = Ratio x Area / species)						
GAZ hyb	Gazania x hybrida	Treasure Flower	0.3	V/cell	5 / m2	850
LOM lon	Lomandra longifolia	Matt Rush	1	V/cell	5 / m2	850



Plant Mix Type 6 - (Total Area = 350m2)

BOTTOM OF EMBANKMENT PLANTING (Mapped as CCEMF Vegetation Community)						
Abbrev	Botanical Name	Common Name	Mature Height (m)	Pot Size	Ratio	Qty
Accent (QTY = Ratio x Area / species)						
DOR exc	Doryanthus excelsa	Gymea Lily	2	140mm	1 / m2	117
MAC com	Macrozamia communis	Burrawang	1.5-2	200mm	1 / m2	117
Xan mac	Xanthorhoea macronema	Grass Tree	2	140mm	1 / m2	117
Shrubs (QTY = Ratio x Area / species)						
ACA flo	Acacia floribunda	Weeping Acacia	3-8	200mm	1 / m2	175
CER gum	Ceratopetalum gummiferum	NSW Christmas Bush	2-5	200mm	1 / m2	175
Ferns, Grasses (QTY = Ratio x Area / species)						
CAR gla	Carpobrotus glaucens	Pig Face	0.1	V/cell	5 / m2	875
HIB sca	Hibberia scandens var. glabra	climbing guinea flower	0.2	V/cell	5 / m2	875



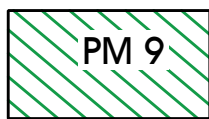
Plant Mix Type 7 - (Total Area= 490m2)

UNIT ENTRY FERNERY PLANTING (Mapped as CCEMF Vegetation Community)						
Abbrev	Botanical Name	Common Name	Mature Height (m)	Pot Size	Ratio	Qty
Accent (QTY = Ratio x Area / species)						
CAL dub	Calochlaena dubia	Bracken	0.6-2	140mm	1 / m2	245
CRI ped	Crinum pedunculatum	Swamp Lily	1.2	140mm	1 / m2	245
Shrubs (QTY = Ratio x Area / species)						
BAE vir	Baekkea virgata	Weeping Myrtle	1.5	200mm	1 / m2	245
IXO coc	Ixora coccinea	Jungle geranium	1.2-1.8	200mm	1 / m2	245
Ferns, Grasses (QTY = Ratio x Area / species)						
ADI aet	Adiantum aethiopicum	Maiden hair fern	0.3	140mm	5 / m2	306
BLE car	Blechnum cartilagineum	gristle fern	0.4	140mm	5 / m2	306
BRA mul B	Brachycome multifida 'Break O Day'	Rock Daisy	0.3	140mm	5 / m2	306
CIS ant	Cissus antarctica	Grape Vine	-	140mm	5 / m2	306
DIC rep	Dichondra repens	Kidney Weed	-	140mm	5 / m2	306
DOO asp	Doodia aspera	Rasp Fern	0.5	140mm	5 / m2	306
HYP mue	Hypolepis muelleri	Ground Fern		140mm	5 / m2	306
VIO hed	Viola hederacea	Native Violet	-	140mm	5 / m2	306



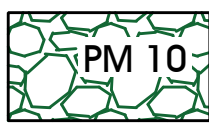
Plant Mix Type 8 - (Total Area= 75m2)

BOTTOM OF EMBANKMENT PLANTING (Mapped as CCEMF Vegetation Community)						
Abbrev	Botanical Name	Common Name	Mature Height (m)	Pot Size	Ratio	Qty
Shrubs (QTY = Ratio x Area / species)						
ERO myo	Erostemon myoperoides	Long Leaf Wax Flower	1	200mm	1 / m2	75
Ferns, Grasses (QTY = Ratio x Area / species)						
HIB sca	Hibberia scandens var. glabra	climbing guinea flower	0.2	V/cell	5 / m2	375



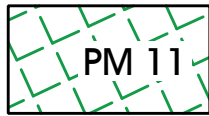
Plant Mix Type 9 - (Total Area = 670m2)

LOW GROWING VERGE MASS PLANTING						
Abbrev	Botanical Name	Common Name	Mature Height (m)	Pot Size	Ratio	Qty
Shrubs (QTY = Ratio x Area / species)						
COR alb	Correa alba	White Correa	1.5	200mm	1 / m2	670
Ferns, Grasses (QTY = Ratio x Area / species)						
DIA cae	Dianella caerulea	Flax Lilly	1	V/cell	5 / m2	1675
MYO par	Myoporum parvifolium	Creeping Boobialla	0.5	V/cell	5 / m2	1675



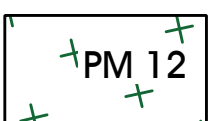
Plant Mix Type 10 - (Total Area = 300m2)

BUILDING PROTECTION APRON, ROCK MULCH WITH MINIMAL PLANTING (Mapped as CCEMF Vegetation Community)						
Abbrev	Botanical Name	Common Name	Mature Height (m)	Pot Size	Ratio	Qty
Shrubs (QTY = Ratio x Area / species)						
BAN spi	Banksia spinulosa	Hairpin banksia	1	200mm	1 / m2	60
Ferns, Grasses (QTY = Ratio x Area / species)						
VIO hed	Viola hederacea	Native Violet	-	140mm	5 / m2	300



Plant Mix Type 11 - (Total Area = 640m2)

BUFFER MANGEMENT AREA (Mapped as CCEMF Vegetation Community)						
Abbrev	Botanical Name	Common Name	Mature Height (m)	Pot Size	Ratio	Qty
Trees (QTY = Ratio x Area / species)						
LIV aus	Livistona australis	Cabbaget ree palm	20-25	140mm	1/30m2	21
Shrubs (QTY = Ratio x Area / species)						
LEP gra	Leptospermum grandifolium	WoollyTea Tree	2	140mm	1 / m2	640
Accents (QTY = Ratio x Area / species)						
CYA aus	Cyathea australis	Rough Tree Fern	10	140mm	0.5 / m2	107
CYA coo	Cyathea cooperi	Cooper's Tree Fern	6	140mm	0.5 / m2	107
MAC com	Macrozamia communis	Burrawang	1.5-2	140mm	1 / m2	214



Plant Mix Type 12 - (Total = 150m2)

RIPARIAN / LOW GROUNDCOVER VERGE PLANTING (Mapped as CCEMF Vegetation Community)						
Abbrev	Botanical Name	Common Name	Mature Height (m)	Pot Size	Ratio	Qty
Ferns, Grasses (QTY = Ratio x Area / species)						
DIA cae	Dianella caerulea	Flax Lilly	1	V/cell	5 / m2	250
FAC nod	Ficinia nodosa	Club rush	0.4	V/cell	5 / m2	250
LOM tan	Lomandra tanika	Tanika	0.5	V/cell	5 / m2	250



Plant Mix Type 13 - (Total = 660m2)

Riparian Mangement Area (Mapped as Coastal Warm Temerate Rainforest)						
Abbrev	Botanical Name	Common Name	Mature Height (m)	Pot Size	Ratio	Qty
Trees (QTY = Ratio x Area / species)						
ALL tor	Allocasuarina torulosa	Sheoak	10	140mm	1 / 30 m2	22
LIV aus	Livistona australis	Cabbage Tree Palm	25	140mm	1 / 30 m2	22
MEL qui	Melaleuca quinquenervia	Broad Leafed Paper-bark	10	140mm	1 / 30 m2	22
SYN glo	Syncarpia glomulifera	Turpentine	15	140mm	1 / 30 m2	22
Shrubs (QTY = Ratio x Area / species)						
BAN eri	Banksia ericifolia	Heath banksia	1	140mm	1 / m2	165
BAN spi	Banksia spinulosa	Hairpin banksia	1	140mm	1 / m2	165
KUN amb	Kunzea ambigua	Tick Bush	2	140mm	1 / m2	165
LEP pol	Leptospermum polygalifolium	Tea Tree	2	140mm	1 / m2	165
Accent (QTY = Ratio x Area / species)						
ASP aus	Asplenium australasicum	Birds Nest Fern	2	140mm	1 / m2	165
CYA coo	Cyathea cooperi	Tree Fern	6	140mm	1 / m2	165
DOR exc	Doryanthus excelsa	Gymea Lily	2	140mm	1 / m2	165
MAC com	Macrozamia communis	Burrawang	1.5-2	140mm	1 / m2	165
Ferns, Grasses (QTY = Ratio x Area / species)						
ADI aet	Adiantum aethiopicum	Maiden hair fern	0.3	V/cell	5 / m2	275
BLE car	Blechnum cartilagineum	gristle fern	0.4	V/cell	5 / m2	275
CAL dub	Calochlaena dubia	Bracken		V/cell	5 / m2	275
CIS ant	Cissus antarctica	Grape Vine	-	V/cell	5 / m2	275
COM cya	Commelina cyanea	Scurvy Weed		V/cell	5 / m2	275
DIA cae	Dianella caerulea	Flax Lilly	1	V/cell	5 / m2	275
GAH cla	Gahnia clarkii	Sword Sedge	2	V/cell	5 / m2	275
HYP mue	Hypolepis muelleri	Ground Fern		V/cell	5 / m2	275
KEN rub	Kennedia rubicunda	Dusky Coral Pea	0.5	V/cell	5 / m2	275
JUN usi	Juncus usitatus	Silky Purple Flag	0.5	V/cell	5 / m2	275
LOM lon	Lomandra longifolia	Matt Rush	1	V/cell	5 / m2	275
PTE esc	Pteridium esculentum	Bracken Fern	0.4	V/cell	5 / m2	275

Street Trees & Feature Shrubs/Trees

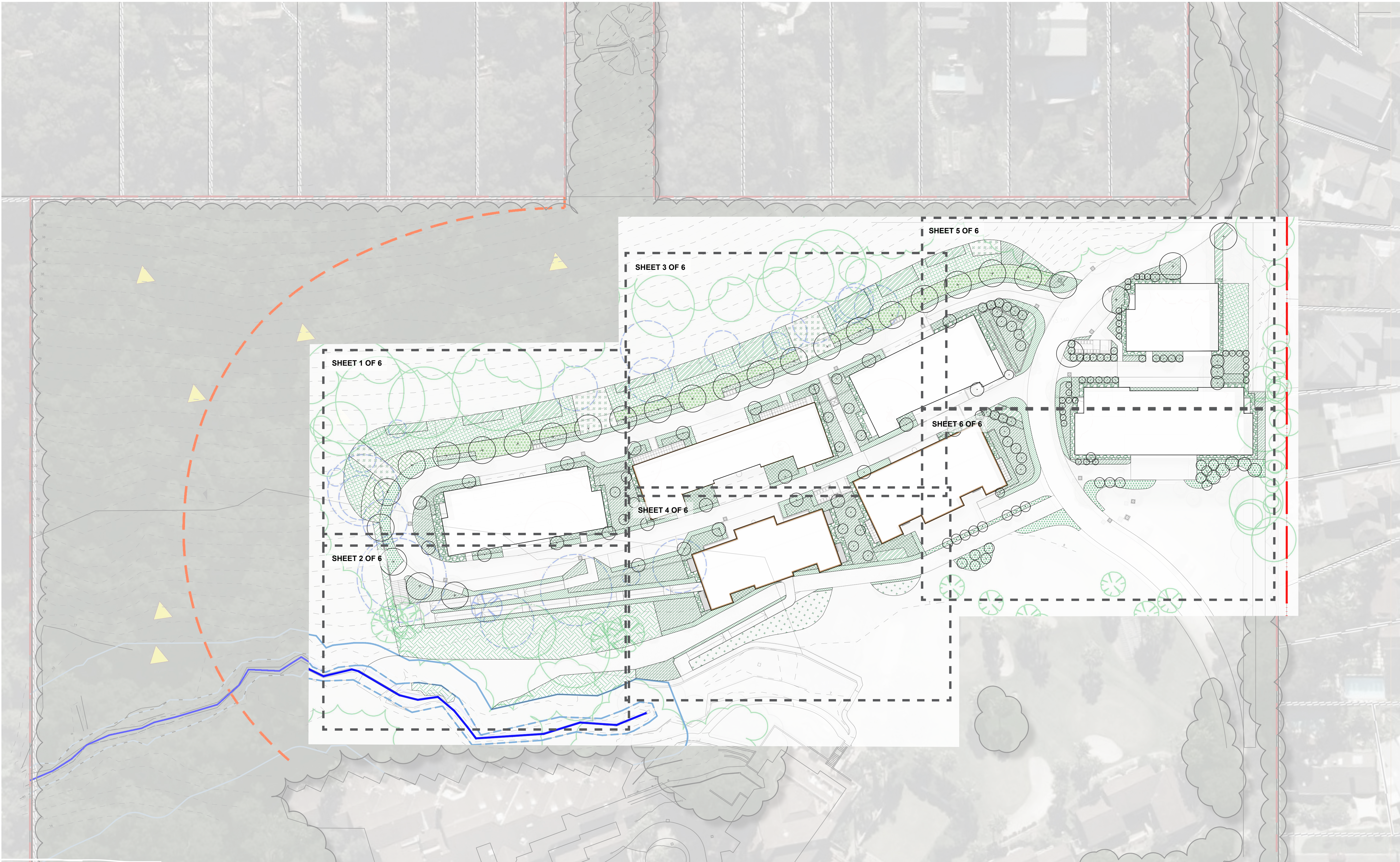
Abbrev	Botanical Name	Common Name	Mature Height (m)	Pot Size	Ratio	Qty
Trees						
ALL tor	Allocasuarina torulosa	Sheoak	10	100L		5
ANG cos	Angophora costata	Somooth Barked Apple	15	100L		4
LIV aus (75L)	Livistona australis	Cabbage Tree Palm	25	75L		22
LIV aus (200L)	Livistona australis	Cabbage Tree Palm	25	200L		11
LIV aus (1000L)	Livistona australis	Cabbage Tree Palm	25	1000L		9
POD ela	Podocarpus elatus	Plum Pine	8-12	75L		37
PRU cer	Prunus cerasifera 'Nigra'	Black Cherry Plum	5	75L		39
TRI lau	Tristanopsis laurina 'Luscious'	Water Gum	7-12	100L		25



Peninsula Gardens - Landscape Masterplan



Peninsula Gardens - Landscape Planting Plan



Peninsula Gardens - Landscape Detail Planting Plan (Sheet 1 of 6)

LEGEND

Property Boundary

Existing Trees To Be Retained & Protected as Per AS-4970.

 Proposed trees

PLANT MIX TYPE 1

PLANT MIX TYPE 2



PLANT MIX TYPE 3

PLANT MIX TYPE 4

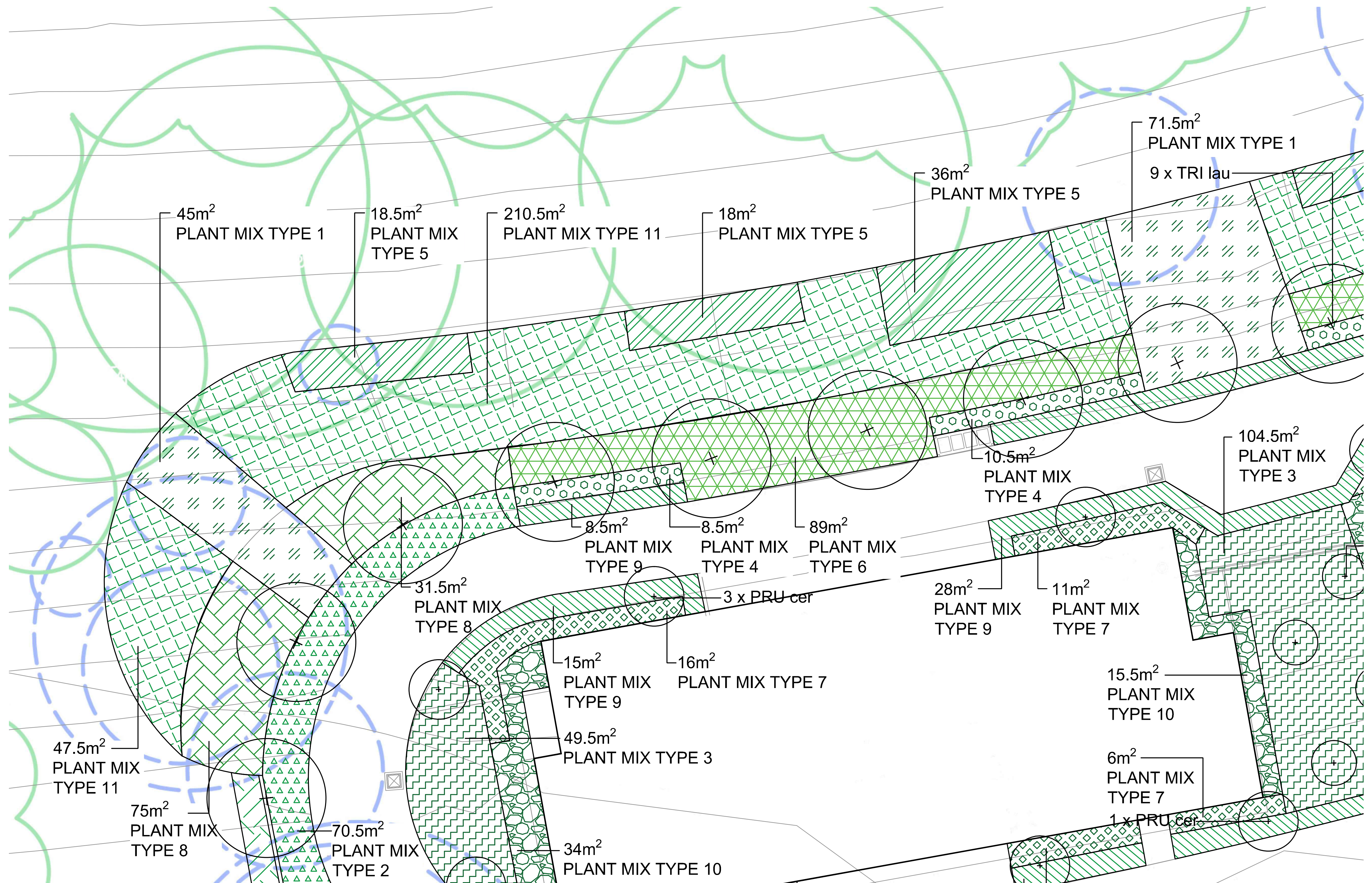
 PLANT MIX TYPE5

PLANT MIX TYPE A

 PLANT MIX TYPE 2

DEFER PLANTING SCHEDULE (2)

REFER PLANTING SCHEDULE (SHEET AVE02-SK-001)FOR SPECIES LIST.



Peninsula Gardens - Landscape Detail Planting Plan (Sheet 2 of 6)

LEGEND

Property Boundary

Existing Trees To Be Retained & Protected as Per AS-4970.

Proposed trees.

PLANT MIX TYPE 1

PLANT MIX TYPE 2

PLANT MIX TYPE 3

PLANT MIX TYPE 4

PLANT MIX TYPE 5

PLANT MIX TYPE 6

PLANT MIX TYPE 7

PLANT MIX TYPE 8

PLANT MIX TYPE 9

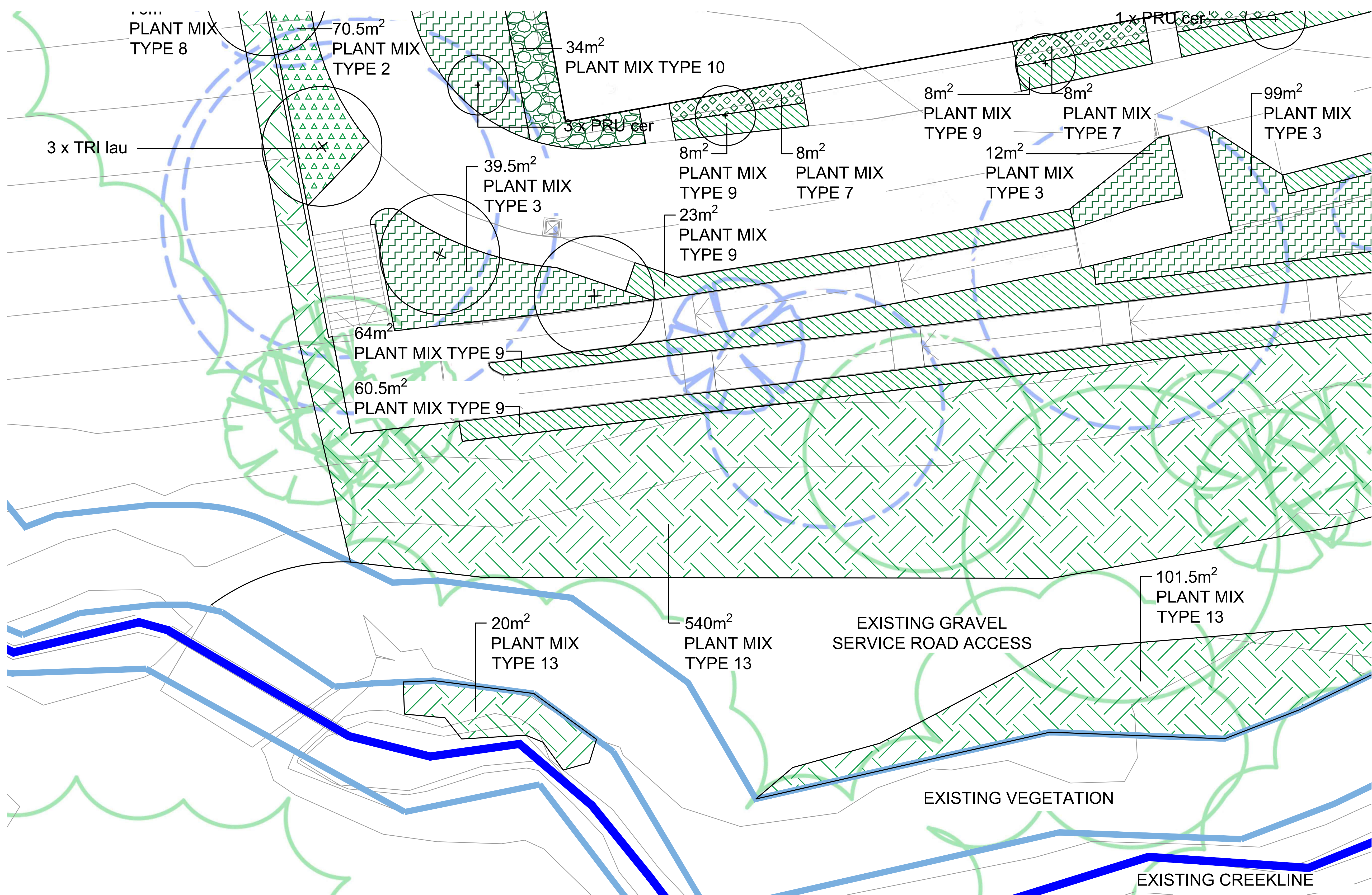
PLANT MIX TYPE 10

PLANT MIX TYPE 11

PLANT MIX TYPE 12

PLANT MIX TYPE 13

REFER PLANTING SCHEDULE (SHEET AVE02-SK-001) FOR SPECIES LIST.



Peninsula Gardens - Landscape Detail Planting Plan (Sheet 3 of 6)

LEGEND

Property Boundary

Existing Trees To Be Retained & Protected as Per AS-4970.

 Proposed trees.

PLANT MIX TYPE 1



PLANT MIX TYPE 2

PLANT MIX TYPE 3

 PLANT MIX TYPE 4 PLANT MIX TYPE5

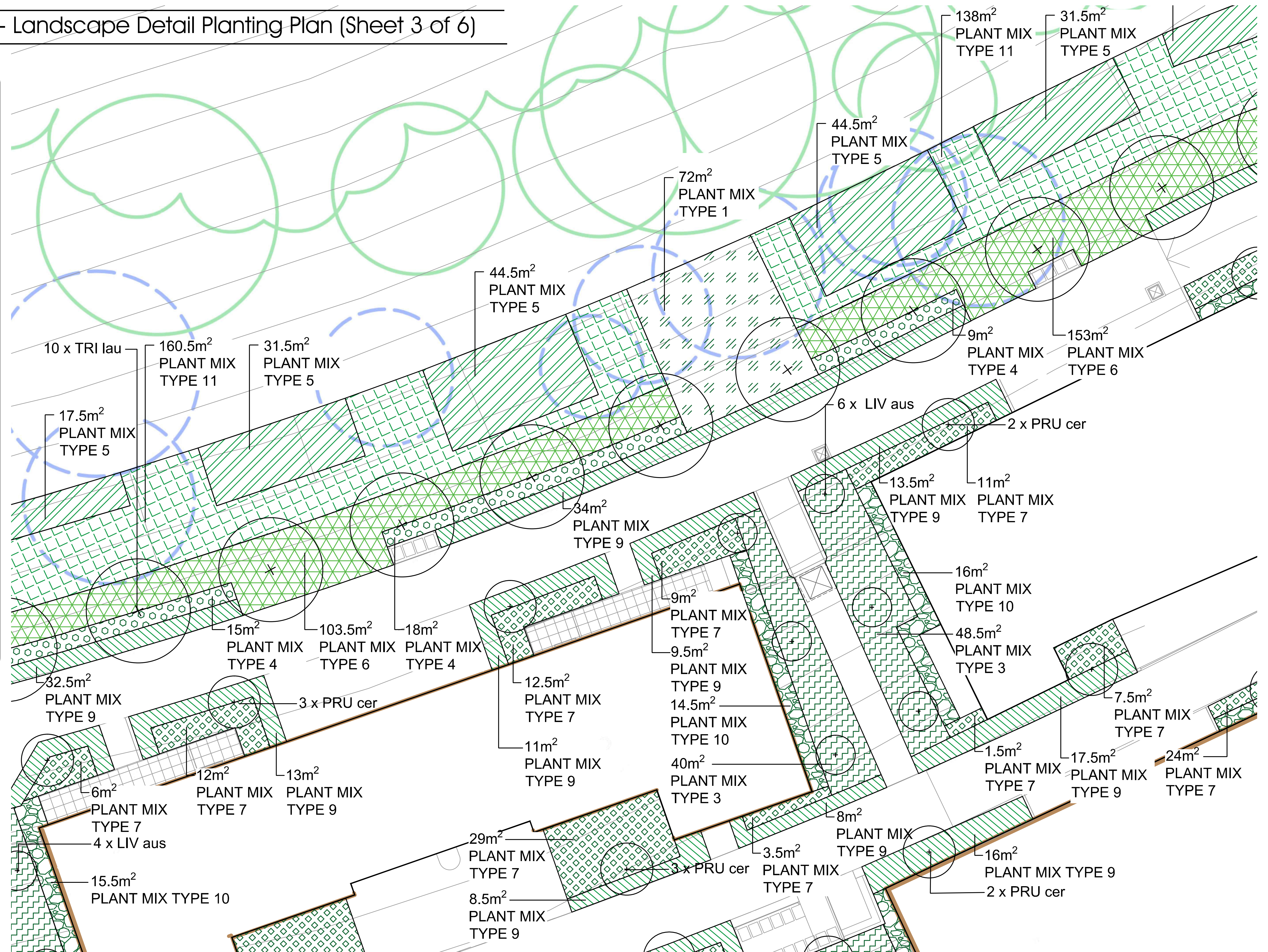
PLANT MIX TYPE 6

 PLANT MIX TYPE 7

PLANTING BASE 2



DEFER PLANTING SCHEDULE (DU)



Peninsula Gardens - Landscape Detail Planting Plan (Sheet 4 of 6)

LEGEND

Property Boundary

Existing Trees To Be Retained & Protected as Per AS-4970.

Proposed trees.

PLANT MIX TYPE 1

PLANT MIX TYPE 2

PLANT MIX TYPE 3

PLANT MIX TYPE 4

PLANT MIX TYPE 5

PLANT MIX TYPE 6

PLANT MIX TYPE 7

PLANT MIX TYPE 8

PLANT MIX TYPE 9

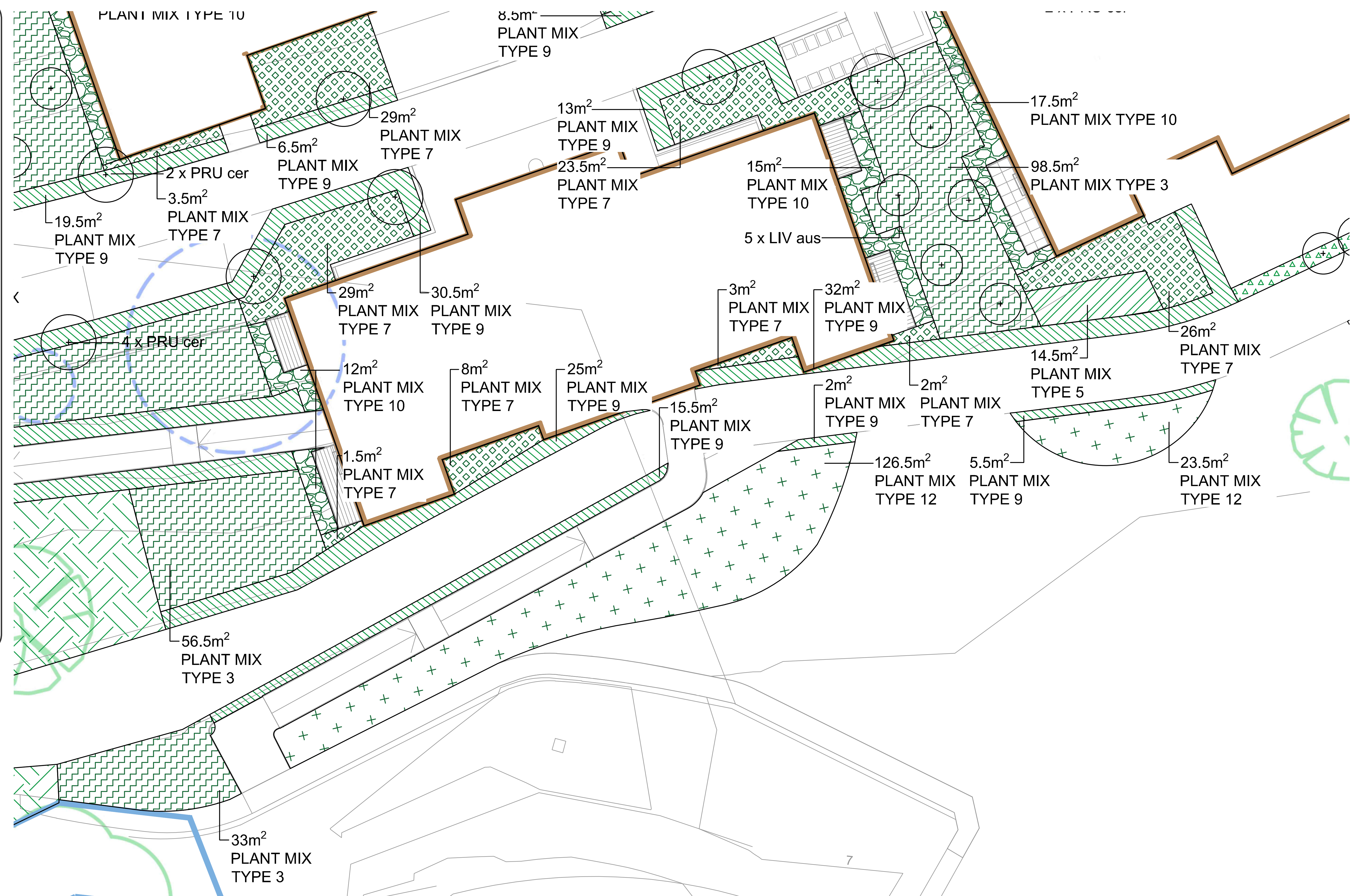
PLANT MIX TYPE 10

PLANT MIX TYPE 11

PLANT MIX TYPE 12

PLANT MIX TYPE 13

REFER PLANTING SCHEDULE (SHEET AVE02-SK-001) FOR SPECIES LIST.



Peninsula Gardens - Landscape Detail Planting Plan (Sheet 5 of 6)

LEGEND



Property Boundary

Existing Trees To Be Retained & Protected as Per AS-4970.

\oplus Proposed trees.

PLANT MIX TYPE 1



PLANT MIX TYPE 2

PLANT MIX TYPE 3

PLANT MIX TYPE 4

 PLANT MIX TYPE5

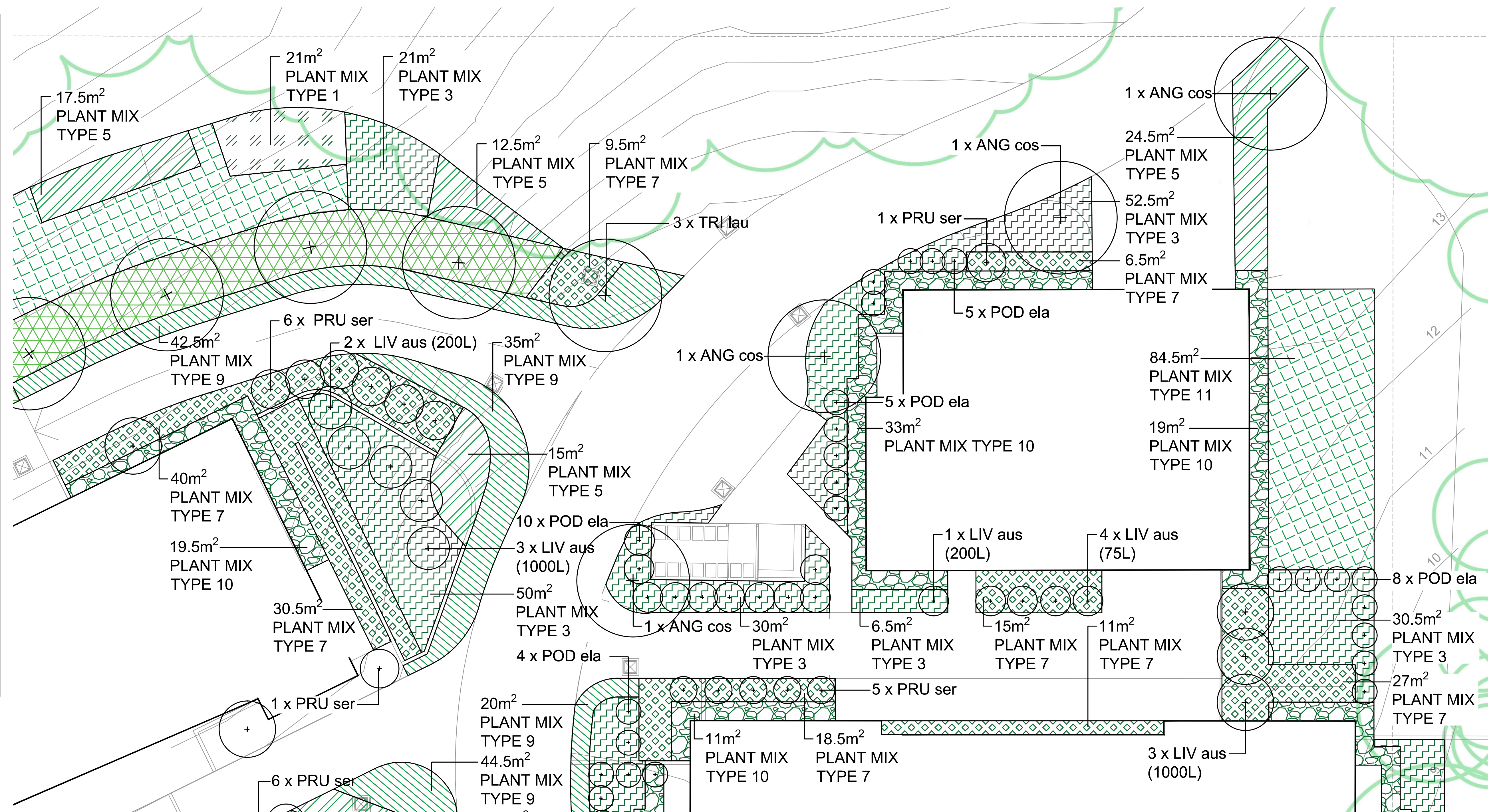
PLANT MIX TYPE 6

 PLANT MIX TYPE 7 PLANT MIX TYPE 9 PLANT MIX TYPE C

PLANT MIXTURE 3



REFER PLANTING SCHEDULE (SHEET AVE02-SK-001)FOR SPECIES LIST.



Peninsula Gardens - Landscape Detail Planting Plan (Sheet 6 of 6)

LEGEND

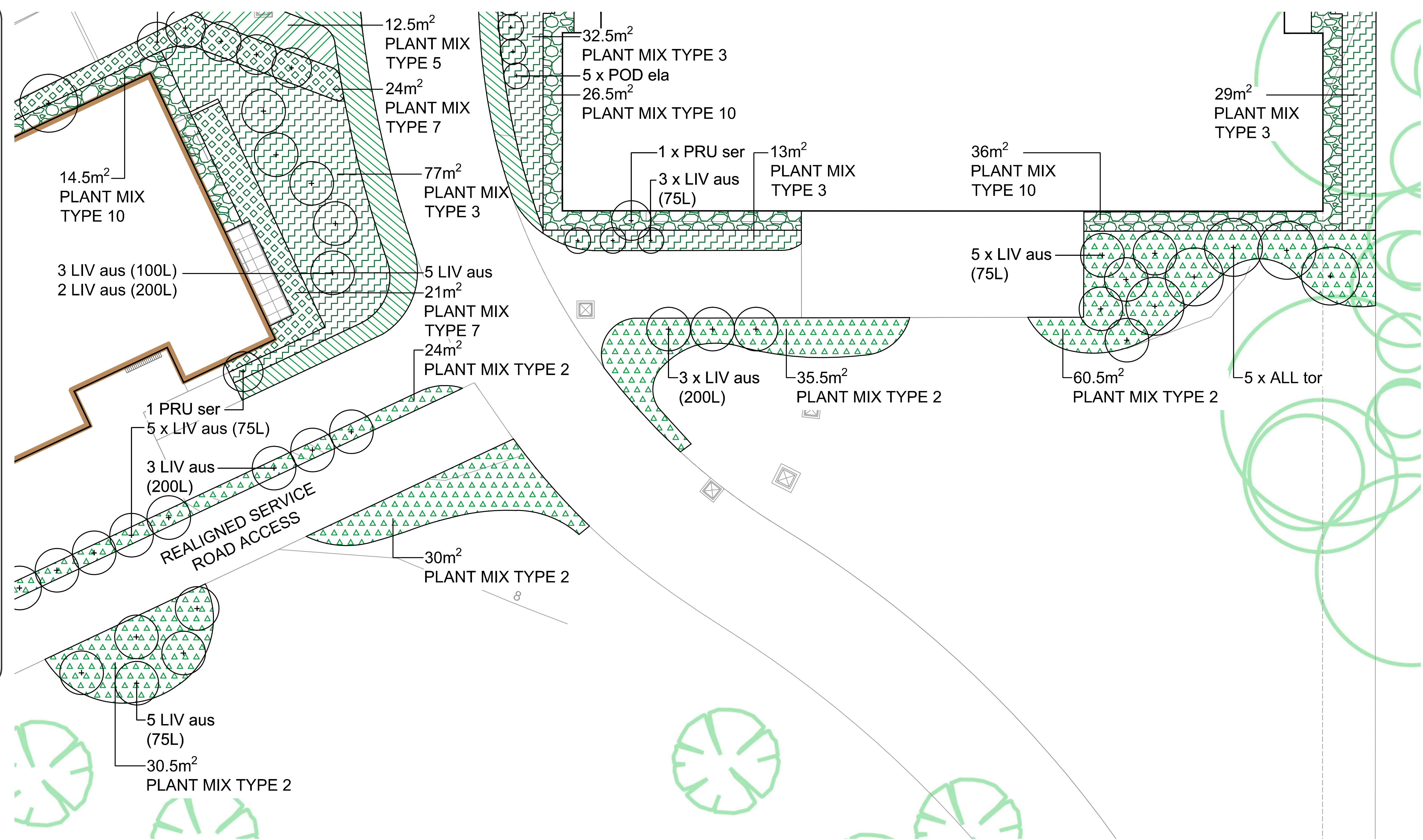
Property Boundary

Existing Trees To Be Retained & Protected as Per AS-4970.

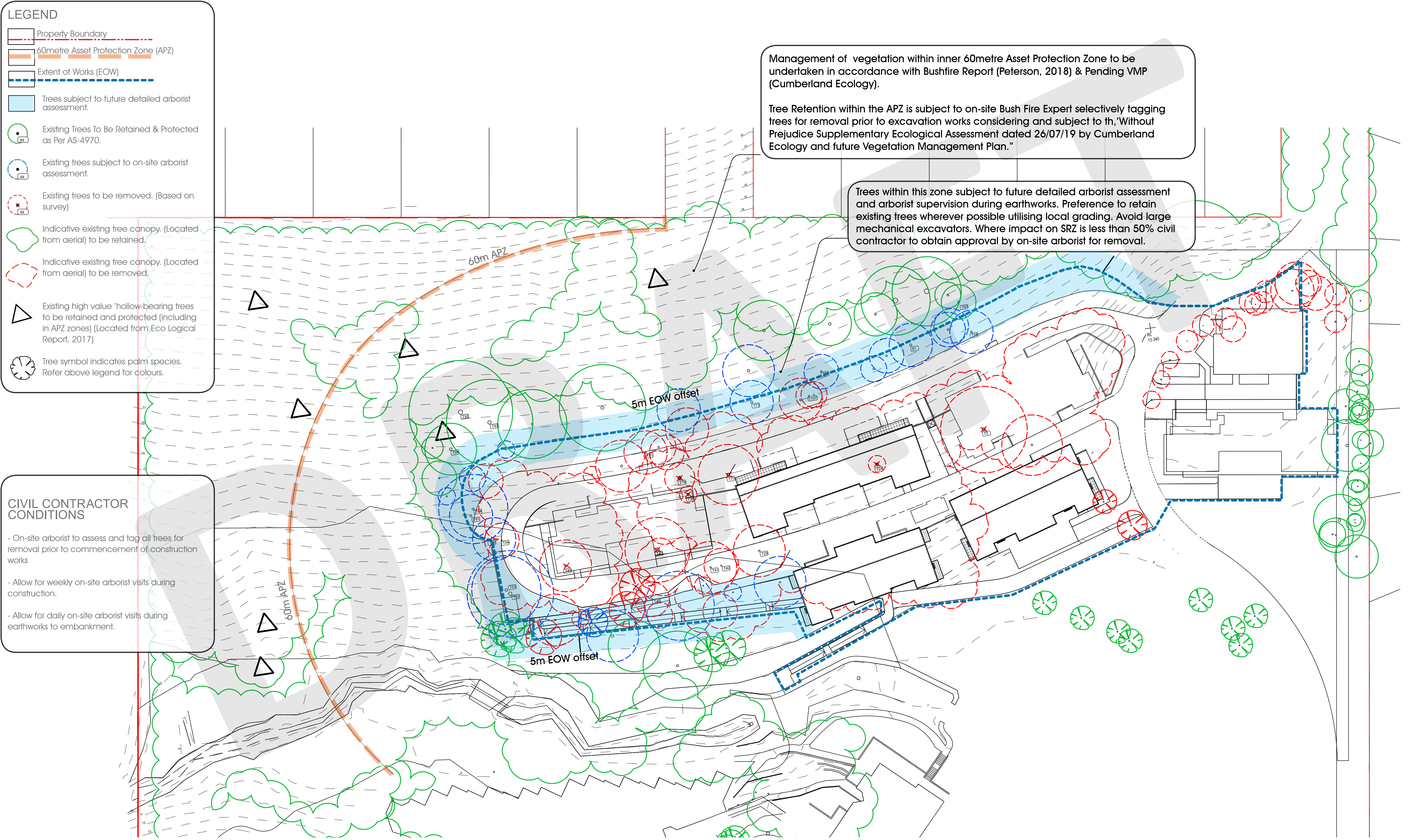
Proposed trees.

	PLANT MIX TYPE 1
	PLANT MIX TYPE 2
	PLANT MIX TYPE 3
	PLANT MIX TYPE 4
	PLANT MIX TYPE 5
	PLANT MIX TYPE 6
	PLANT MIX TYPE 7
	PLANT MIX TYPE 8
	PLANT MIX TYPE 9
	PLANT MIX TYPE 10
	PLANT MIX TYPE 11
	PLANT MIX TYPE 12
	PLANT MIX TYPE 13

REFER PLANTING SCHEDULE (SHEET AVE02-SK-001) FOR SPECIES LIST.



Peninsula Gardens - Tree Retention/Removal Plan



Peninsula Gardens - Tree Protection Plan

LEGEND

- Property Boundary
- 60metre Asset Protection Zone (APZ)
- Extent of Works (EOW)
- Trees subject to future detailed arborist assessment.
- Existing Trees To Be Retained & Protected as Per AS-4970.
- Existing trees subject to on-site arborist assessment.
- Existing trees to be removed. (Based on survey)
- Indicative existing tree canopy. (Located from aerial) to be retained.
- Indicative existing tree canopy. (Located from aerial) to be removed.
- Existing high value 'hollow-bearing trees to be retained and protected (including in APZ zones) (Located from Eco Logical Report, 2017)
- Tree symbol indicates palm species. Refer above legend for colours.
- Tree Protection Exclusion Fencing.

CIVIL CONTRACTOR CONDITIONS

- On-site arborist to assess and tag all trees for removal prior to commencement of construction works
- Allow for weekly on-site arborist visits during construction.
- Allow for daily on-site arborist visits during earthworks to embankment.

Tree Protection Zone

NO ACCESS
Contact:

1.8 m

TYPICAL TREE PROTECTION SIGNAGE - as Per AS-4970.

General Notes:
1. Arborist Report contains existing tree protection measures. Consult with supervising Arborist for protection approval.
2. Timber
(1) Type: Australian Hardwood F17
(2) Finish: None
(3) Colour: Natural
(4) Timber to be stained, 3 coats with adequate drying time between coats. Use 'Integrant' or approved equivalent.
(5) Timber to be kiln dried or equivalent recycled
(6) Timber to be free of open knots, cupping, warping or splitting
(7) Rough sawn timber, subject to approval.

Existing tree to be retained and protected both above and below ground
Do not drive, park vehicles, store stockpile, dump or otherwise place any construction materials within enclosure area
Tree retention/ protection marker tape
Amber battens secured to tree

TYPICAL TREE PROTECTION - TYPE 1 (as Per AS-4970.)

General Notes:
1. Arborist Report contains existing tree protection measures. Consult with supervising Arborist for protection approval.

Existing tree to be retained and protected both above and below ground
Do not drive, park vehicles, store stockpile, dump or otherwise place any construction materials within enclosure area
Tree retention/ protection marker tape
Temporary protection enclosure at the drip line/ extent of canopy
1200mm high orange plastic hazard mesh fixed to star pickets with cable ties max spacing at 4000mm
Ensure safety cap to top of each star picket

TYPICAL TREE PROTECTION - TYPE 2 (as Per AS-4970.)

