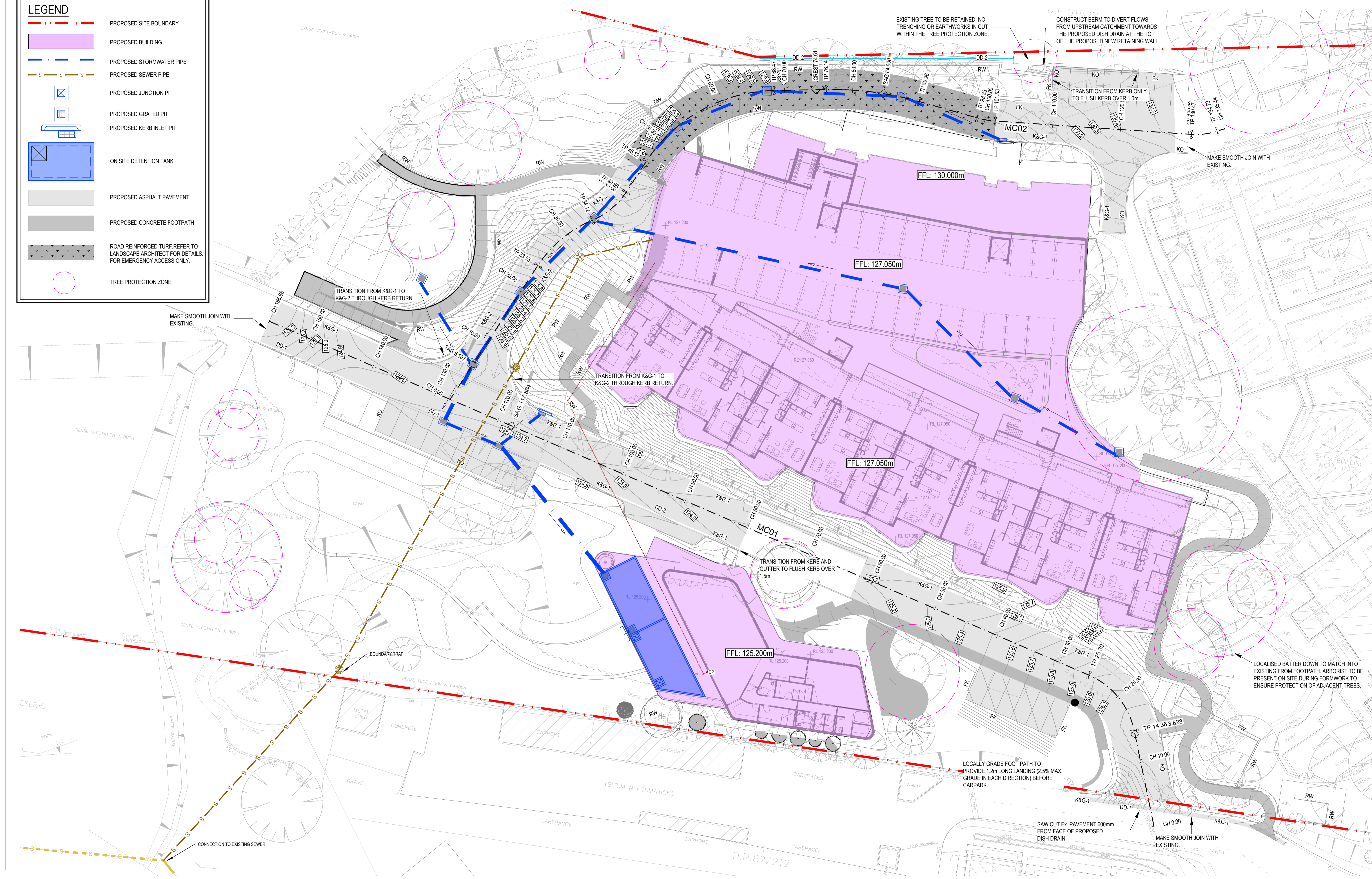


LEGEND

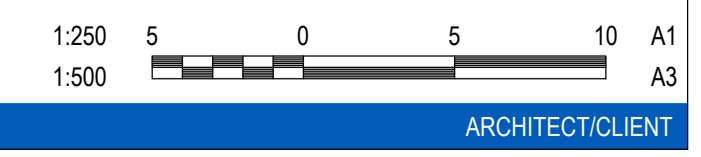
- PROPOSED SITE BOUNDARY
- PROPOSED BUILDING
- PROPOSED STORMWATER PIPE
- PROPOSED SEWER PIPE
- PROPOSED JUNCTION PIT
- PROPOSED GRATED PIT
- PROPOSED KERB INLET PIT
- ON SITE DETENTION TANK
- PROPOSED ASPHALT PAVEMENT
- PROPOSED CONCRETE FOOTPATH
- ROAD REINFORCED TURF. REFER TO LANDSCAPE ARCHITECT FOR DETAILS. FOR EMERGENCY ACCESS ONLY.
- TREE PROTECTION ZONE



REV	DESCRIPTION	DRAWN	APPD	DATE
F	ISSUED FOR APPROVAL	CPO	IAH	27.05.20
E	ISSUED FOR APPROVAL	CPO	IAH	14.02.20
D	ISSUED FOR TENDER	CPO	RET	25.03.19
C	ISSUED FOR TENDER	CPO	RET	13.03.19
B	ISSUED FOR TENDER	CPO	RET	11.03.19
A	ISSUED FOR TENDER	CPO	RET	05.03.19

DRAWN:	CPO
DESIGNED:	GLE
VERIFIED:	IAH 01.06.18
APPROVED FOR TENDER:	RET 04.03.19
APPROVED FOR CONSTRUCTION:	...

JACKSON TEECE
Architecture



181 ALLAMBIE ROAD
ALLAMBIE HEIGHTS
NSW

SITWORKS PLAN

PROJECT	TITLE
38509-CI-060-01.dwg	SITWORKS PLAN



FOR APPROVAL
NOT FOR CONSTRUCTION

AS SHOWN	PROJECT No	CI-060-01	F
SCALE @ A1	38509	DRAWING No	REV