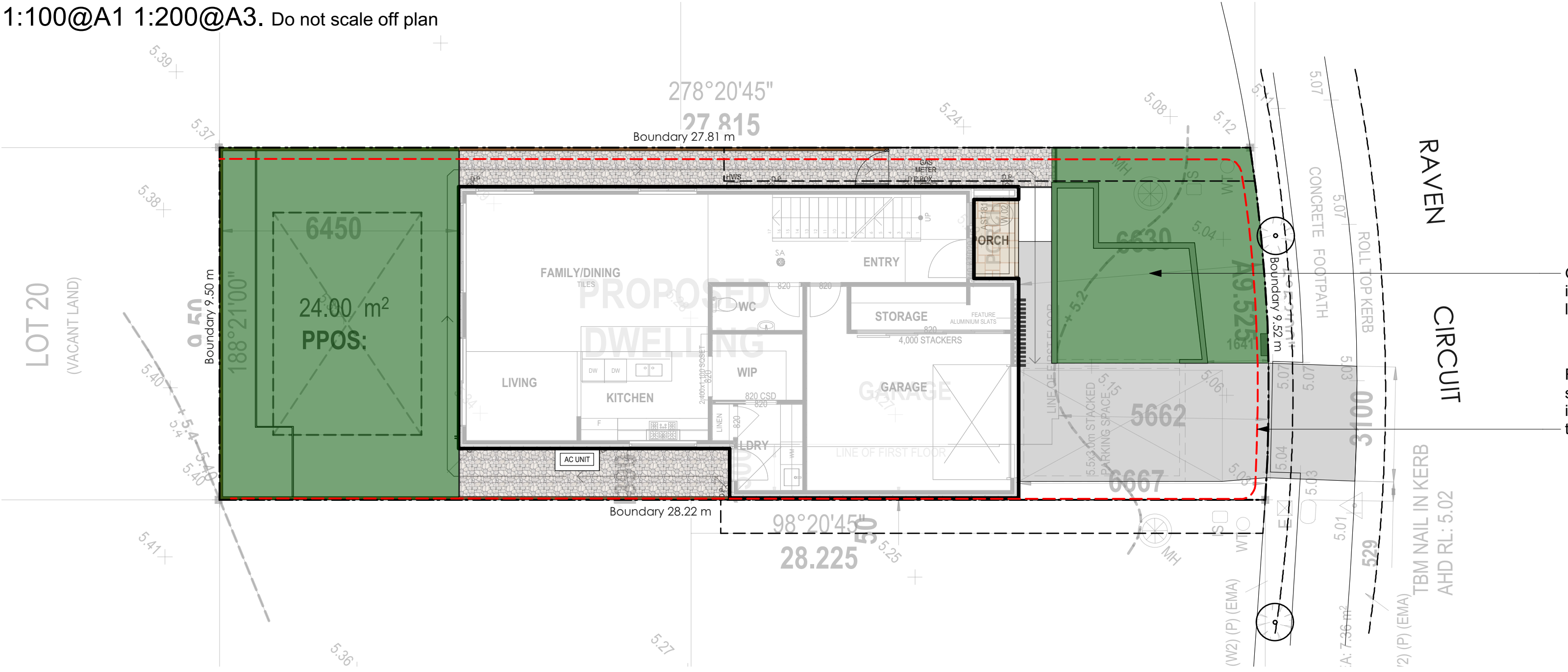
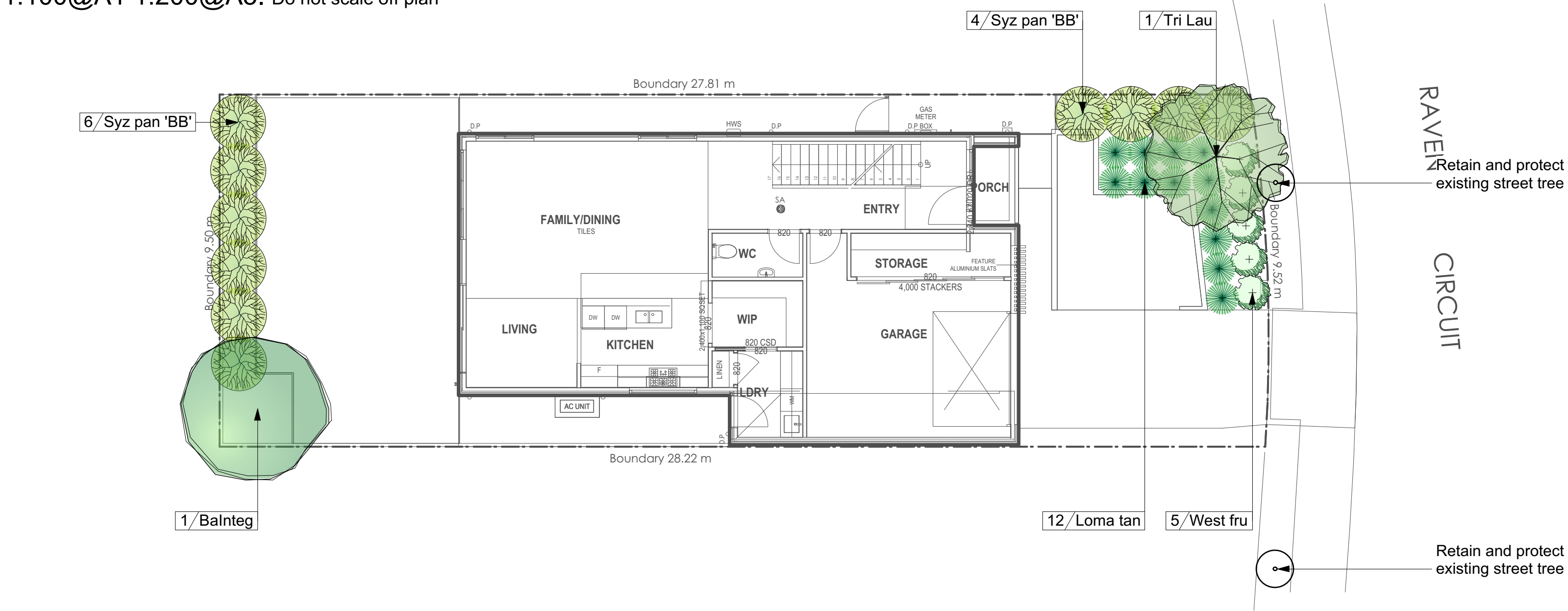


Site Plan
1:100@A1 1:200@A3. Do not scale off plan

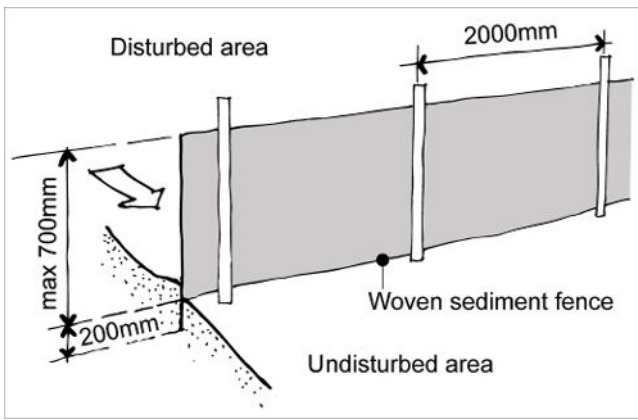


Planting Plan
1:100@A1 1:200@A3. Do not scale off plan

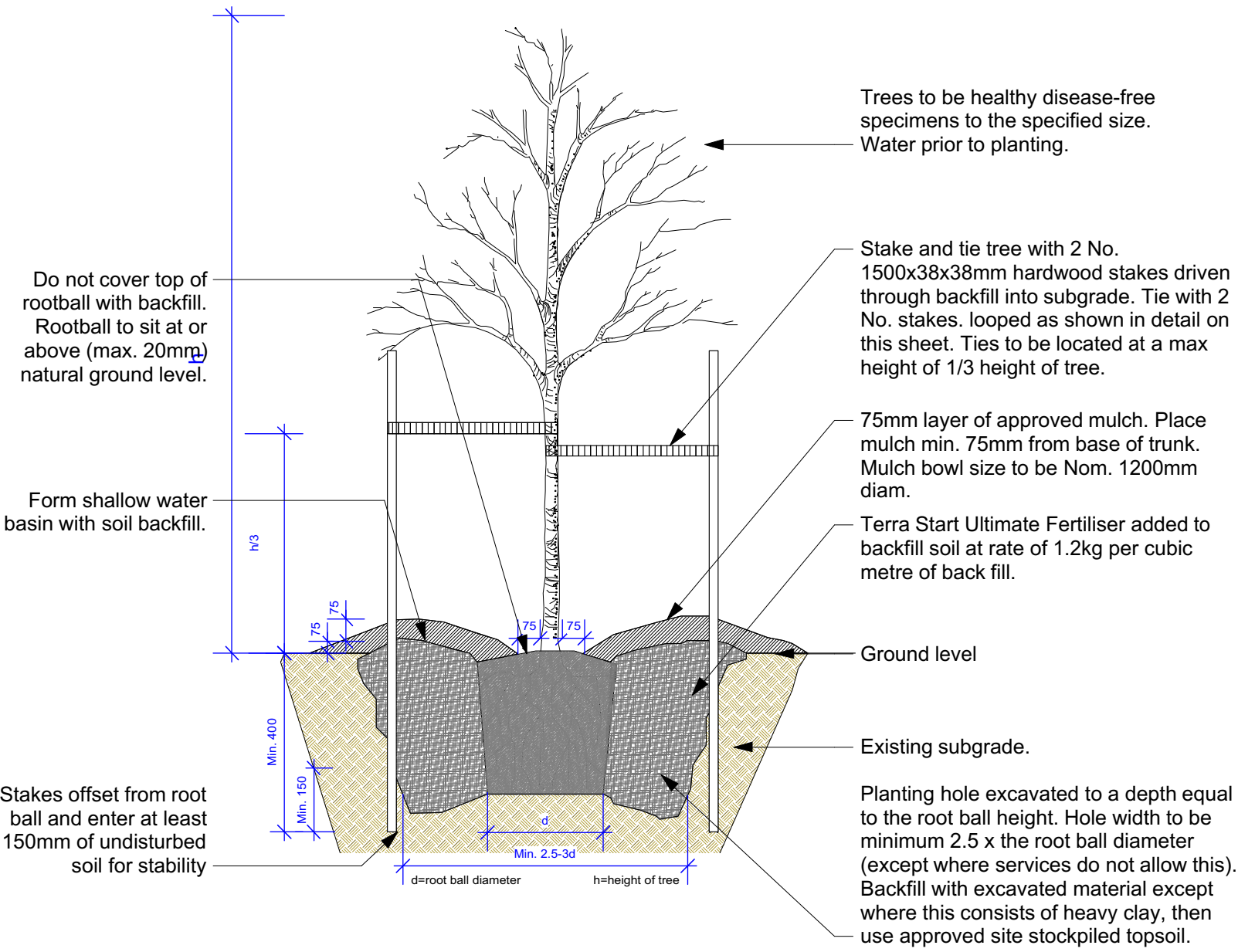


| ID | Quantity | Latin Name | Common Name | Scheduled Size | Mature Height | Mature Spread |
|--------------|----------|---------------------------------------|-----------------------------|----------------|---------------|---------------|
| Balnteg | 1 | Banksia integrifolia | Coastal Banksia | 25lt | 8 - 12m | 3.5 - 6m |
| Loma tan | 12 | Lomandra longifolia 'Tanika' | Spiny-headed mat rush | 150mm | 0.45 - 0.6m | 0.6 - 0.9m |
| Syz pan 'BB' | 10 | Syzygium paniculatum 'Backyard Bliss' | Lillypilly 'Backyard Bliss' | 200mm | 5 - 10m | 6 - 10m |
| Tri Lau | 1 | Tristaniopsis laurina 'Luscious' | Kanooka, Water Gum | 45lt | 12 - 15m | 3.5 - 6m |
| West fru | 5 | Westringia fruticosa | Coastal Rosemary | 150mm | 0.9 - 1.5m | 0.9 - 1.2m |

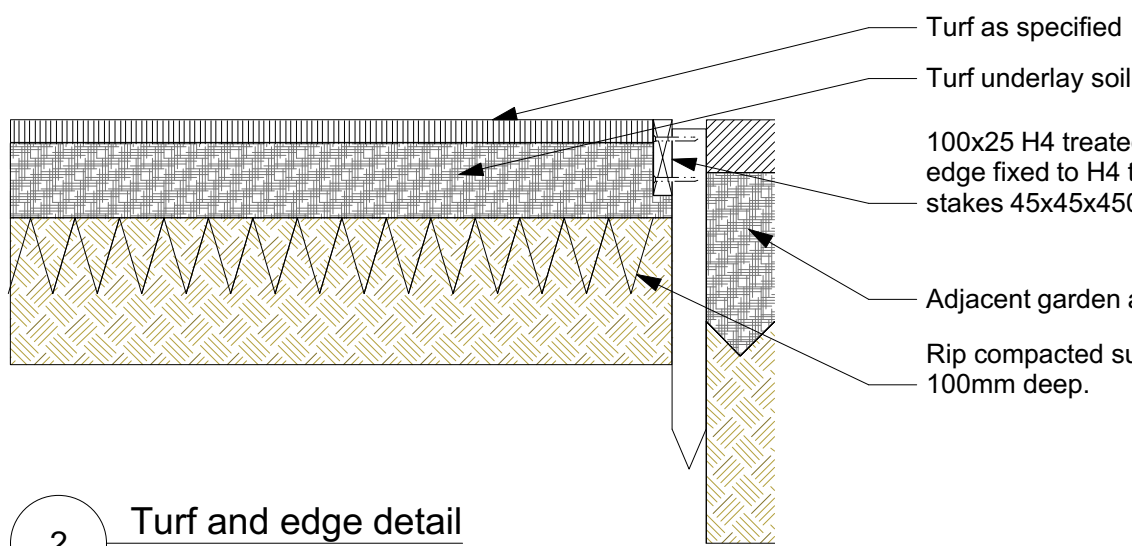
| AREA CALCULATION | | |
|----------------------------|-----------|------------|
| | AREA (m2) | PERCENTAGE |
| Site | 267,8 | |
| Landscape total as per DCP | 94,23 | 35,19% |



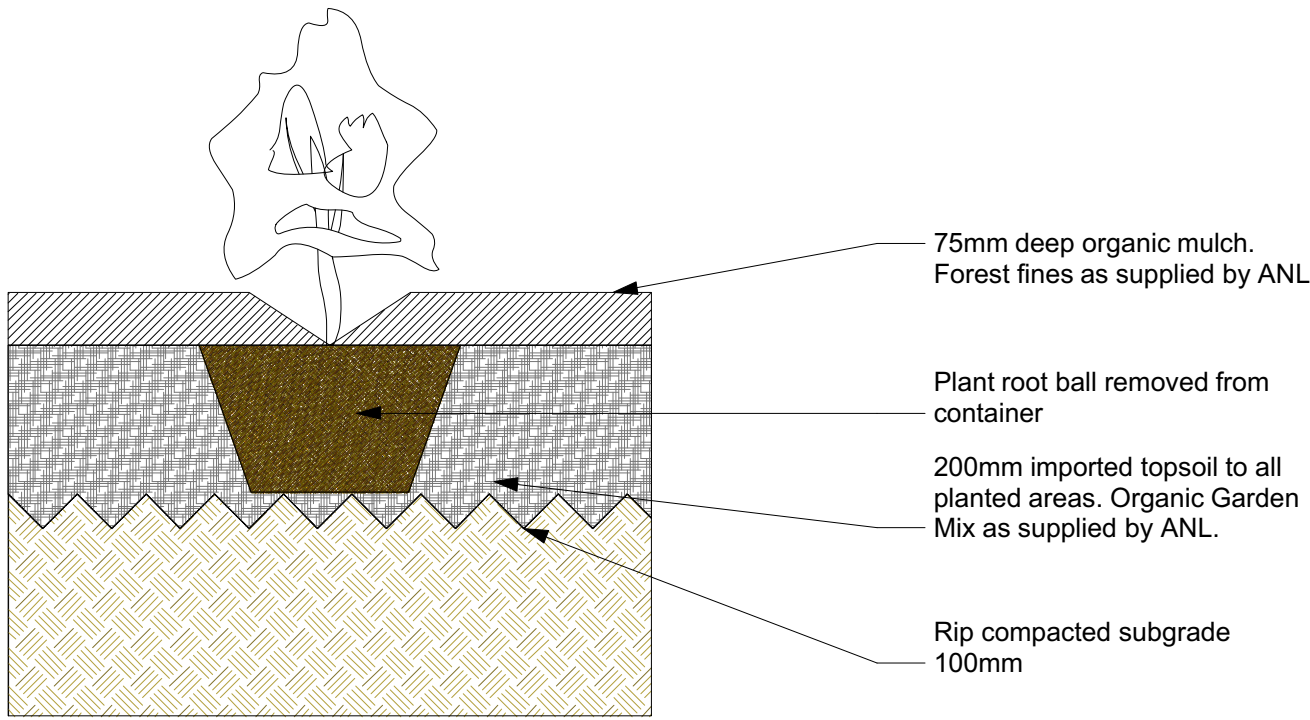
Sedimentation Control Fence
Not to scale.
Source: www.yourhome.gov.au



1 Tree planting
Scale: 1:20



2 Turf and edge detail
Scale: 1:10

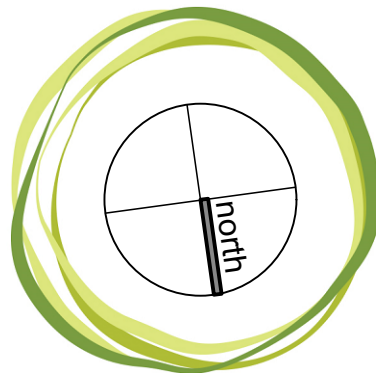


3 Shrub planting
Scale: 1:10

Legend

- MULCH AREA
- TURF AREA
- TIMBER DECKING
- CONCRETE PAVING
- UNIT PAVING
- STAIRS
- PEBBLE
- GRAVEL
- COBBLESTONE
- TIMBER
- WATER
- MASONRY RETAINING WALL
- STONE RETAINING WALL
- TIMBER RETAINING WALL
- BOULDER RETAINING WALL
- SITE OR WORKS BOUNDARY
- + 88.88
- +TW 88.88
- Paving 1
- Fall
- +88.88
- SURVEY (50% GREY LINES)
- EXISTING TREE TO RETAIN
- EXISTING TREE TO REMOVE
- EXISTING ROCK OUTCROP

Notes:
>Do not scale off plan.
>Contractors to check all measurements onsite before quoting or commencing work.
>If abnormalities arise, contact the Landscape Architect.
>This design is copyright and is not to be reproduced in anyway without written consent of Jamie King Landscape Architect.



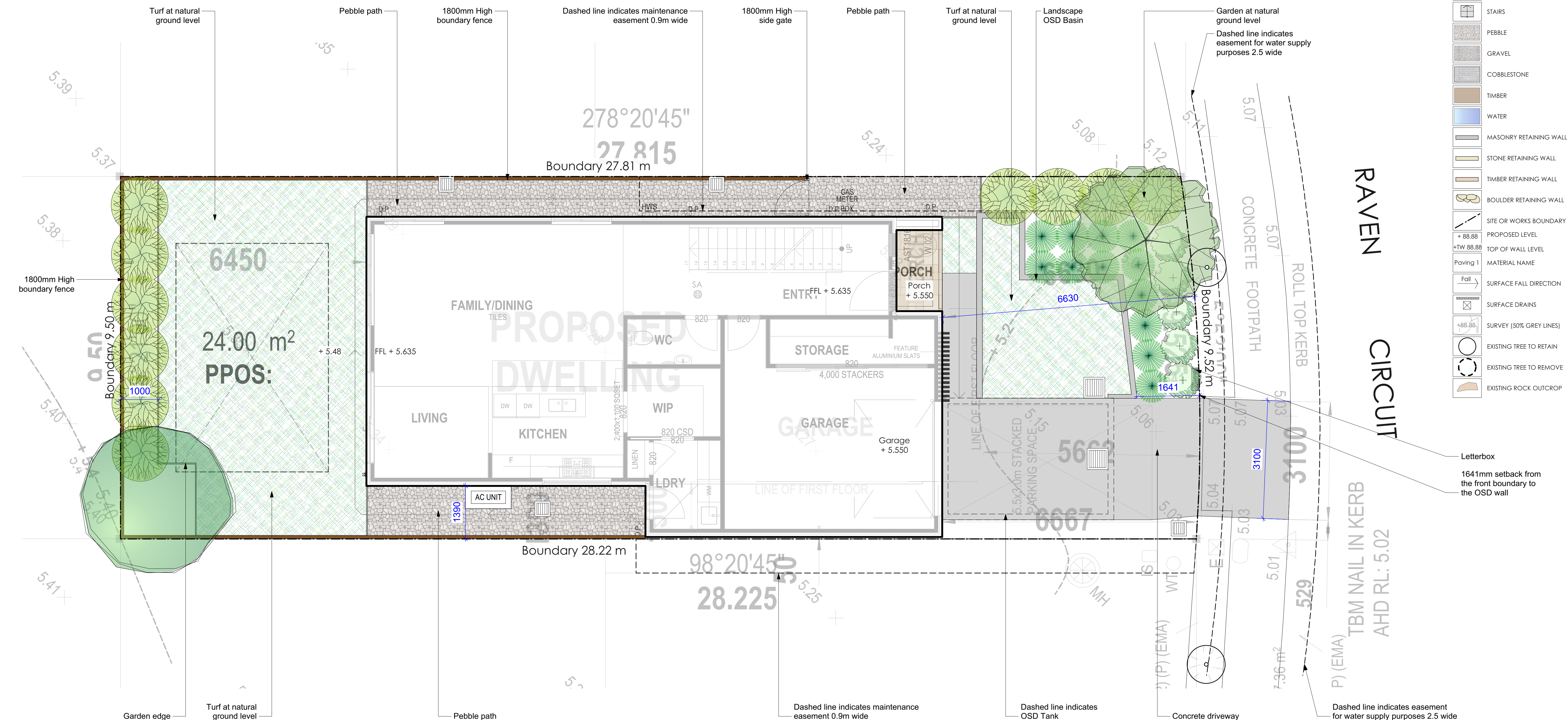
JAMIE KING
LANDSCAPE ARCHITECT
DESIGN • APPROVE • MANAGE

| | | | | |
|---------|--------------------------------|-------------------------|------------|------------------------|
| B | 26/06/23 | DRAFT issue for review. | PROJECT # | 23051 |
| A | 23/12/22 | DRAFT issue for review. | CLIENT | Fu Shun Realty PTY LTD |
| ISSUE | DATE | REVISION | DATE # | See above |
| PROJECT | Lot 5 Raven Circuit Warriewood | | DWG # | Sht-101 |
| CLIENT | Fu Shun Realty PTY LTD | | SCALE @ A1 | See Plan |
| DWG | Master Landscape Plan | | DRAWN | RAR |
| CHKD | JK | REVISION | | |

Jamie King Landscape Architect
22 Coonanga Road, Avalon, NSW, 2107
T: 0421 517 991
W: www.jamieking.com.au
E: jamie@jamieking.com.au

1:50@A1 1:100@A3. Do not scale off plan

| | |
|--|-------------------------|
| | MULCH AREA |
| | TURF AREA |
| | TIMBER DECKING |
| | CONCRETE PAVING |
| | UNIT PAVING |
| | STAIRS |
| | PEBBLE |
| | GRAVEL |
| | COBBLESTONE |
| | TIMBER |
| | WATER |
| | MASONRY RETAINING WALL |
| | STONE RETAINING WALL |
| | TIMBER RETAINING WALL |
| | BOULDER RETAINING WALL |
| | SITE OR WORKS BOUNDARY |
| | PROPOSED LEVEL |
| | TOP OF WALL LEVEL |
| | MATERIAL NAME |
| | SURFACE FALL DIRECTION |
| | SURFACE DRAINS |
| | SURVEY (50% GREY LINES) |
| | EXISTING TREE TO RETAIN |
| | EXISTING TREE TO REMOVE |
| | EXISTING ROCK OUTCROP |



Notes:

- >Do not scale off plan.
- >Contractors to check all measurements onsite before quoting or commencing work.
- >If abnormalities arise, contact the Landscape Architect.
- >This design is copyright and is not to be reproduced in anyway without written consent of Jamie King Landscape Architect.

| | | | | | |
|--------------------------------|----------|-------------------------|--|--|-----------|
| B | 26/06/23 | DRAFT issue for review | | >This design is copyright and is not to be reproduced in anyway without written consent of Jamie King Landscape Architect. | |
| A | 23/12/22 | DRAFT issue for review. | | | |
| ISSUE | | DATE | | REVISION | |
| PROJECT | | | | PROJECT # | |
| Lot 5 Raven Circuit Warriewood | | | | 2305 | |
| CLIENT | | | | DATE # | See above |
| Fu Shun Realty PTY LTD | | | | SCALE @ A1 | See plan |
| DWG | | | | DRAWN | CHKD |
| Landscape Detail Plan | | | | JRK | REVISION |
| | | | | Sht-10 | |

Jamie King Landscape Architect W: www.jamieking.com.au
22 Coonanga Road, Avalon, NSW, 2107 T: 0421 517 991 E: jamie@jamieking.com.au



JAMIE KING
LANDSCAPE ARCHITECT
DESIGN • APPROVE • MANAGE