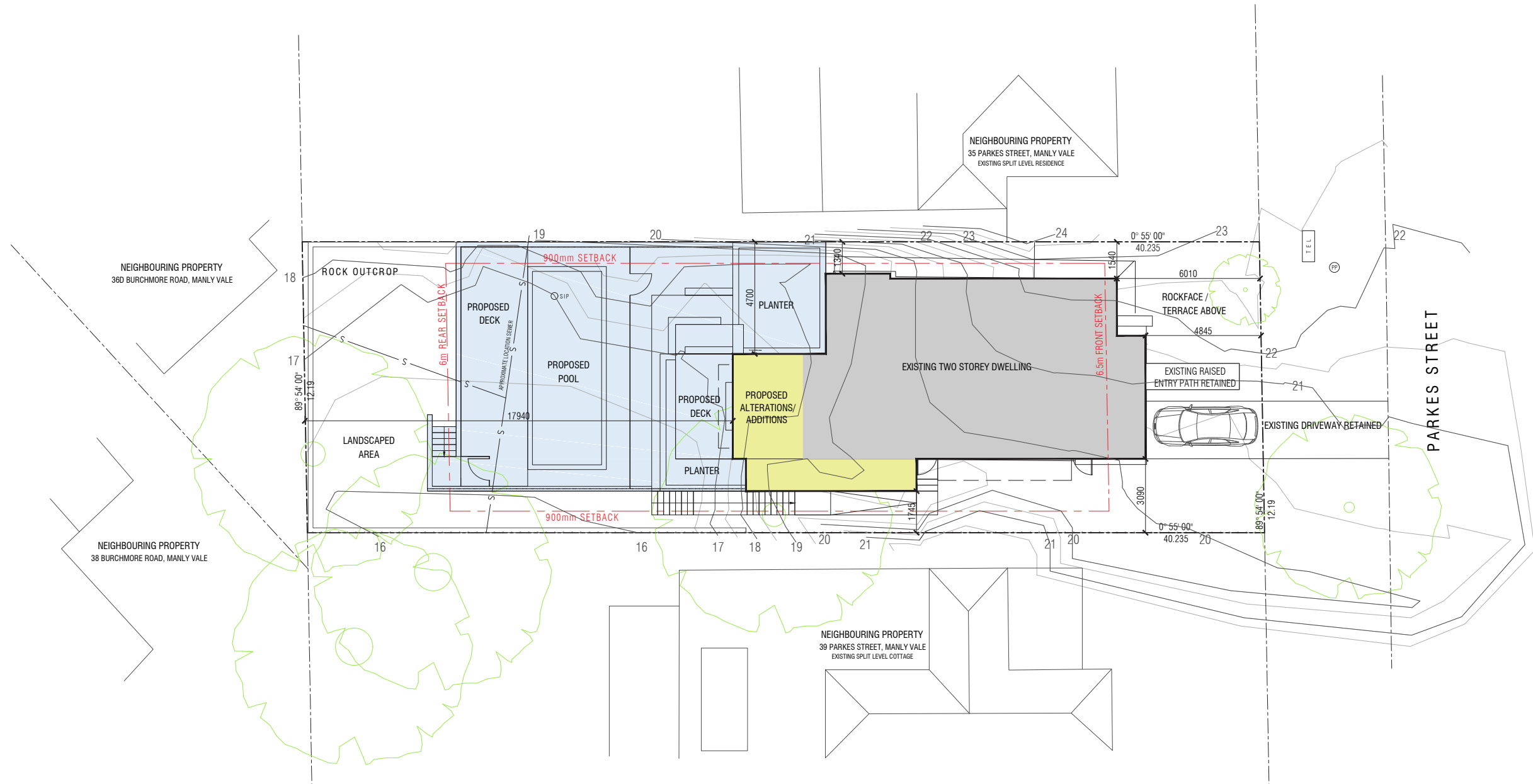


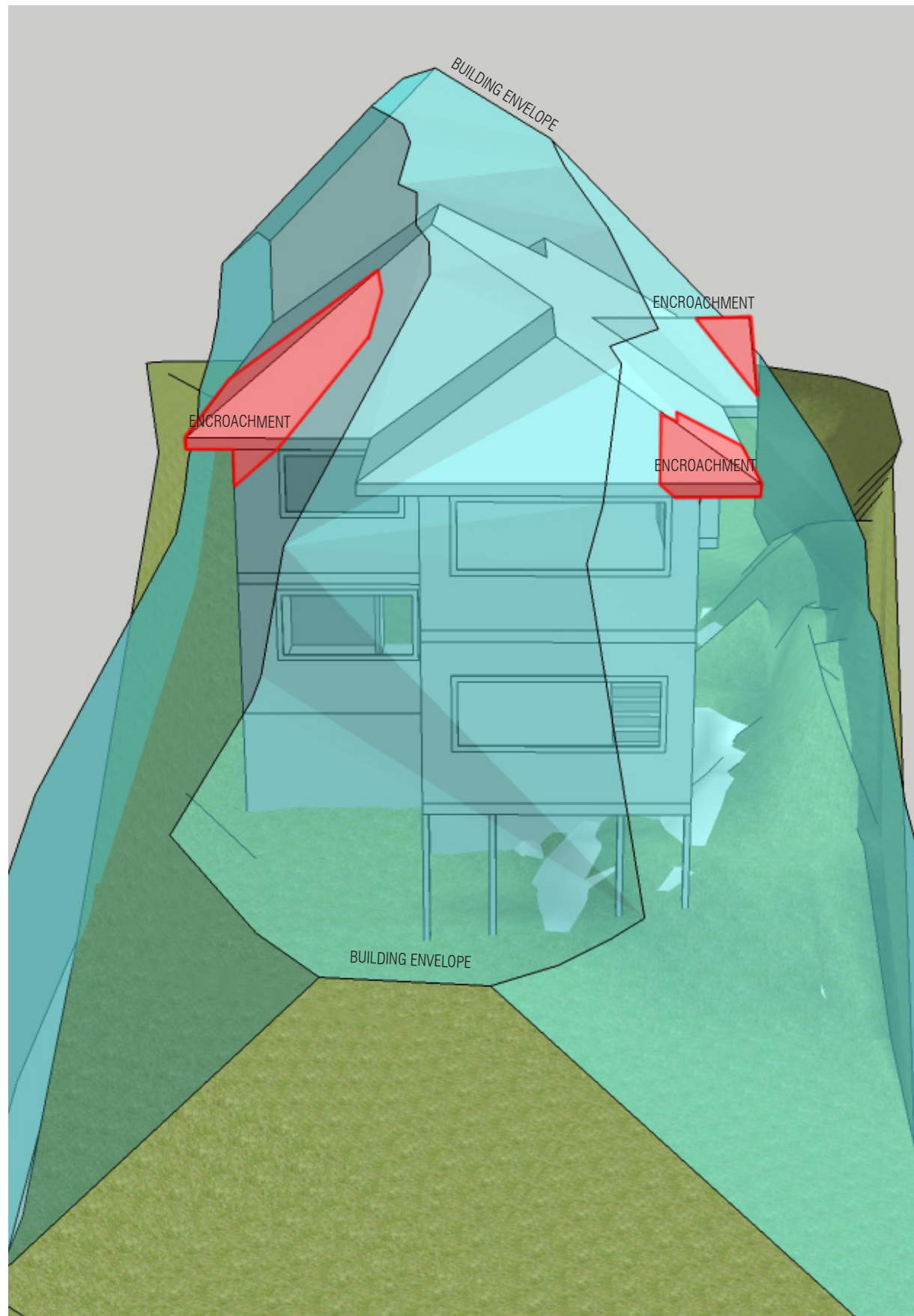


NOTE
THE DEVELOPMENT WILL COMPLY WITH THE ACT
ENVIRONMENT PROTECTION AUTHORITY,
ENVIRONMENT PROTECTION GUIDELINES FOR
CONSTRUCTION AND LAND DEVELOPMENT IN
THE ACT, AUGUST 2007

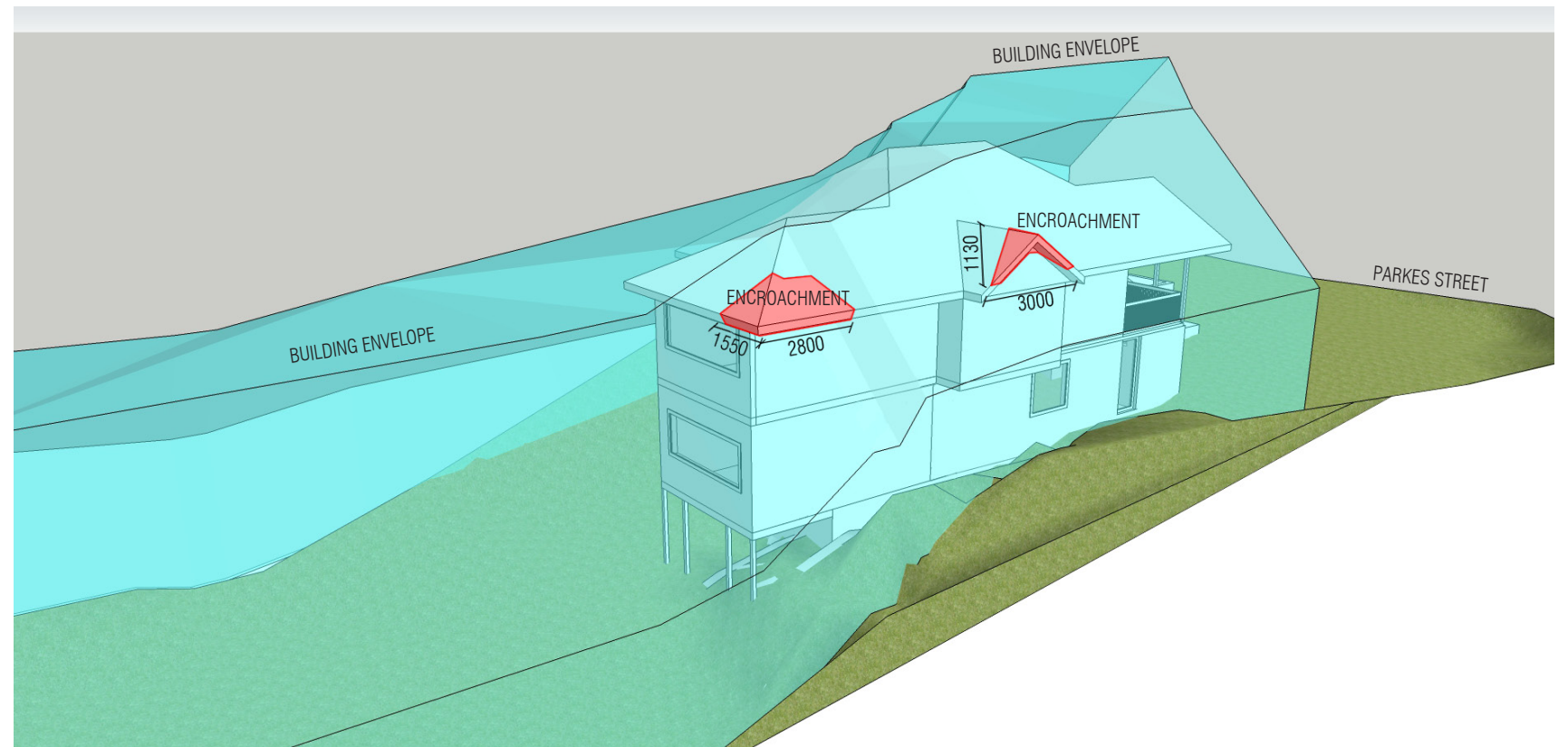
LEGEND

	EXISTING STRUCTURE
	NEW/ADDITIONAL STRUCTURE
	NEW OUTDOOR LANDSCAPING
	SEWERAGE UNDERGROUND
	POWERPOLE
	EXISTING SEWER INSPECTION POINT
	TELSTRA ASSET

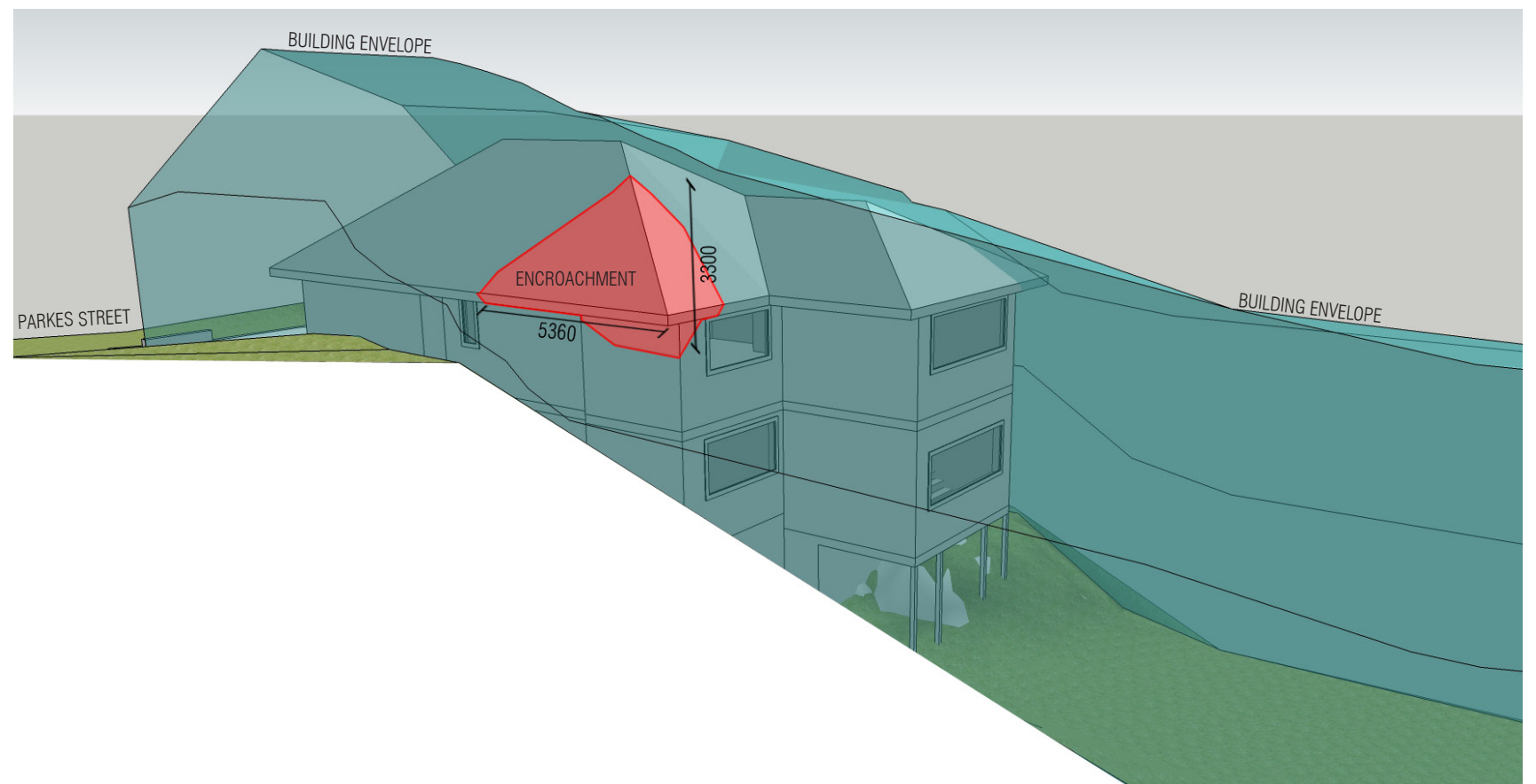




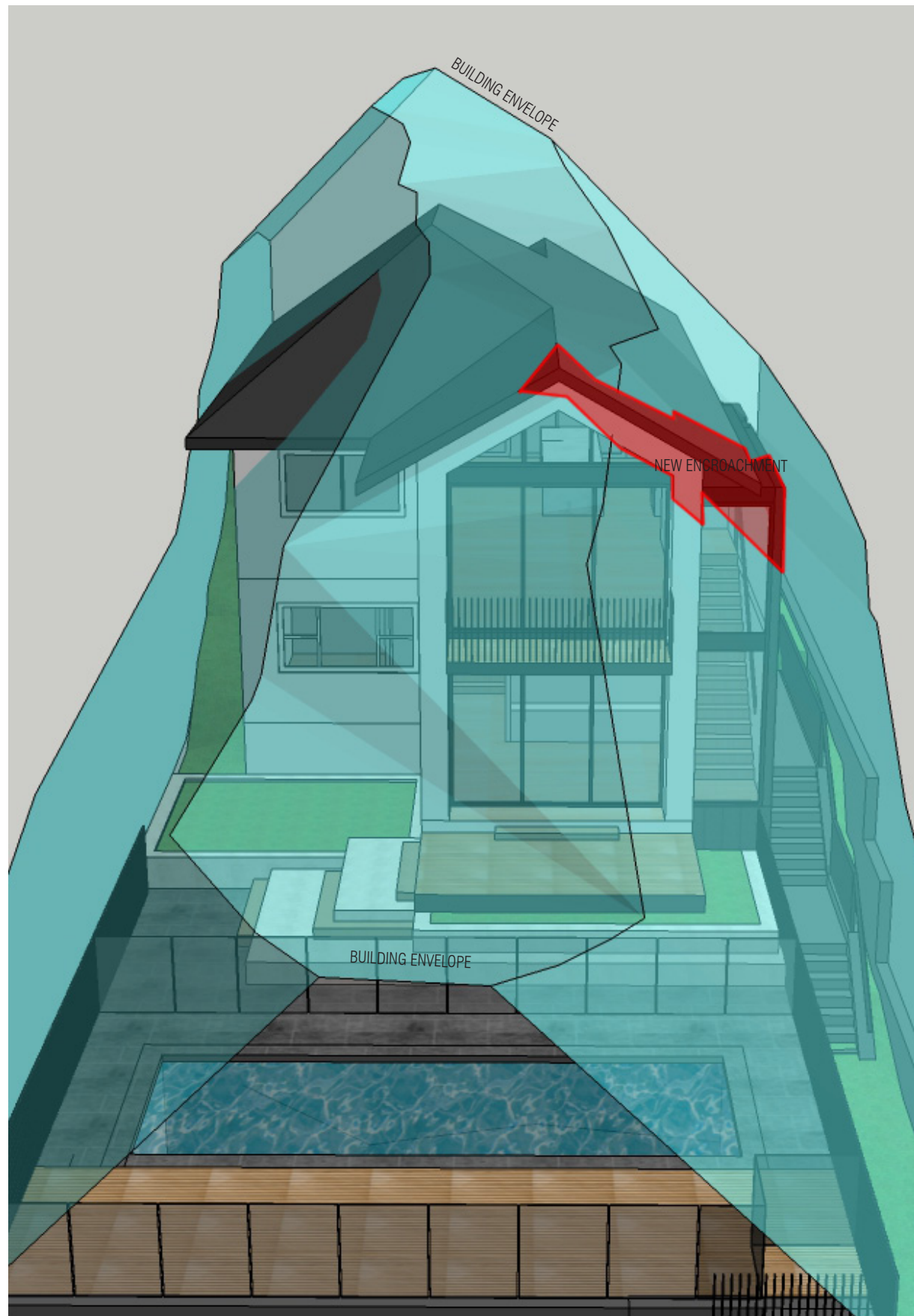
SOUTH ELEVATION



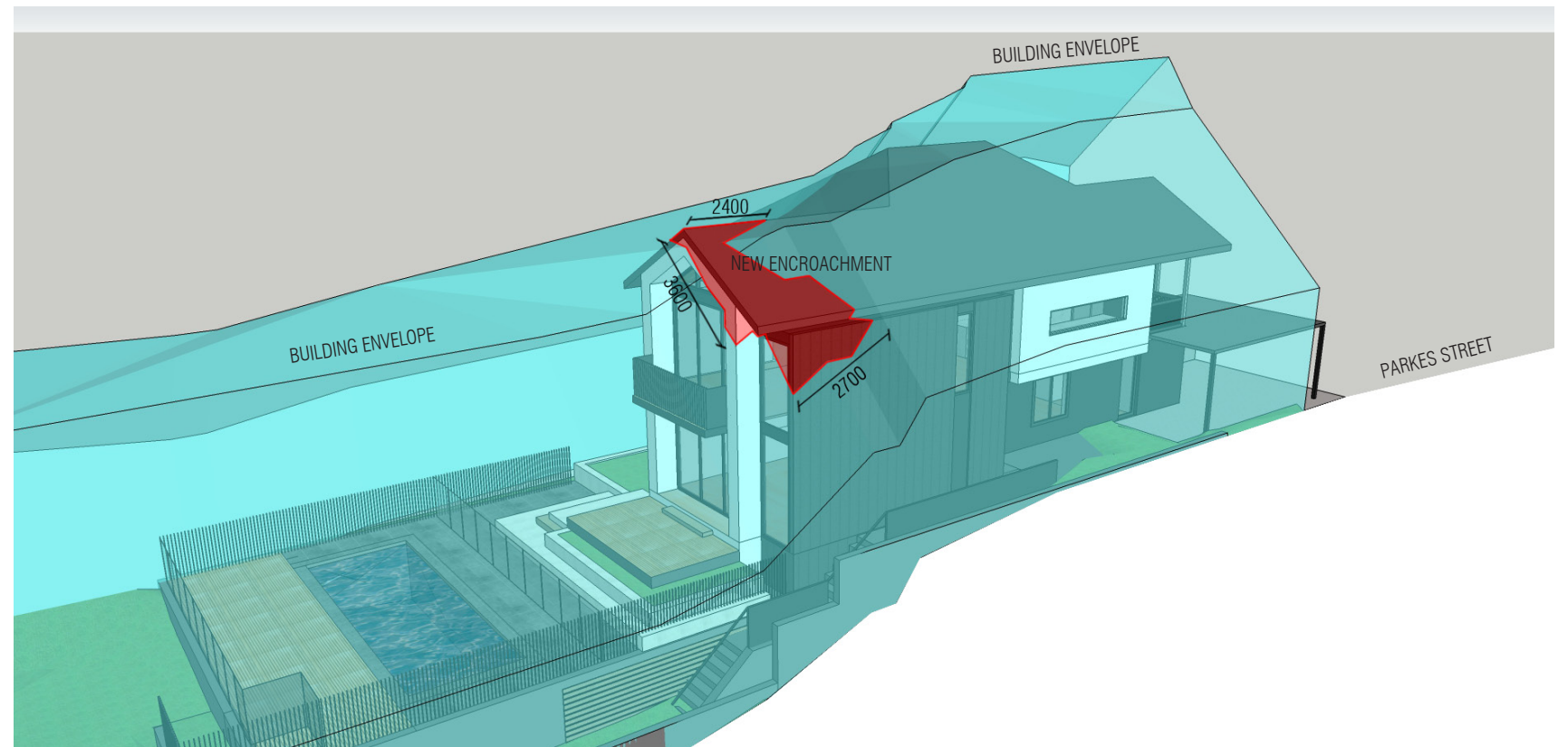
EAST ELEVATION



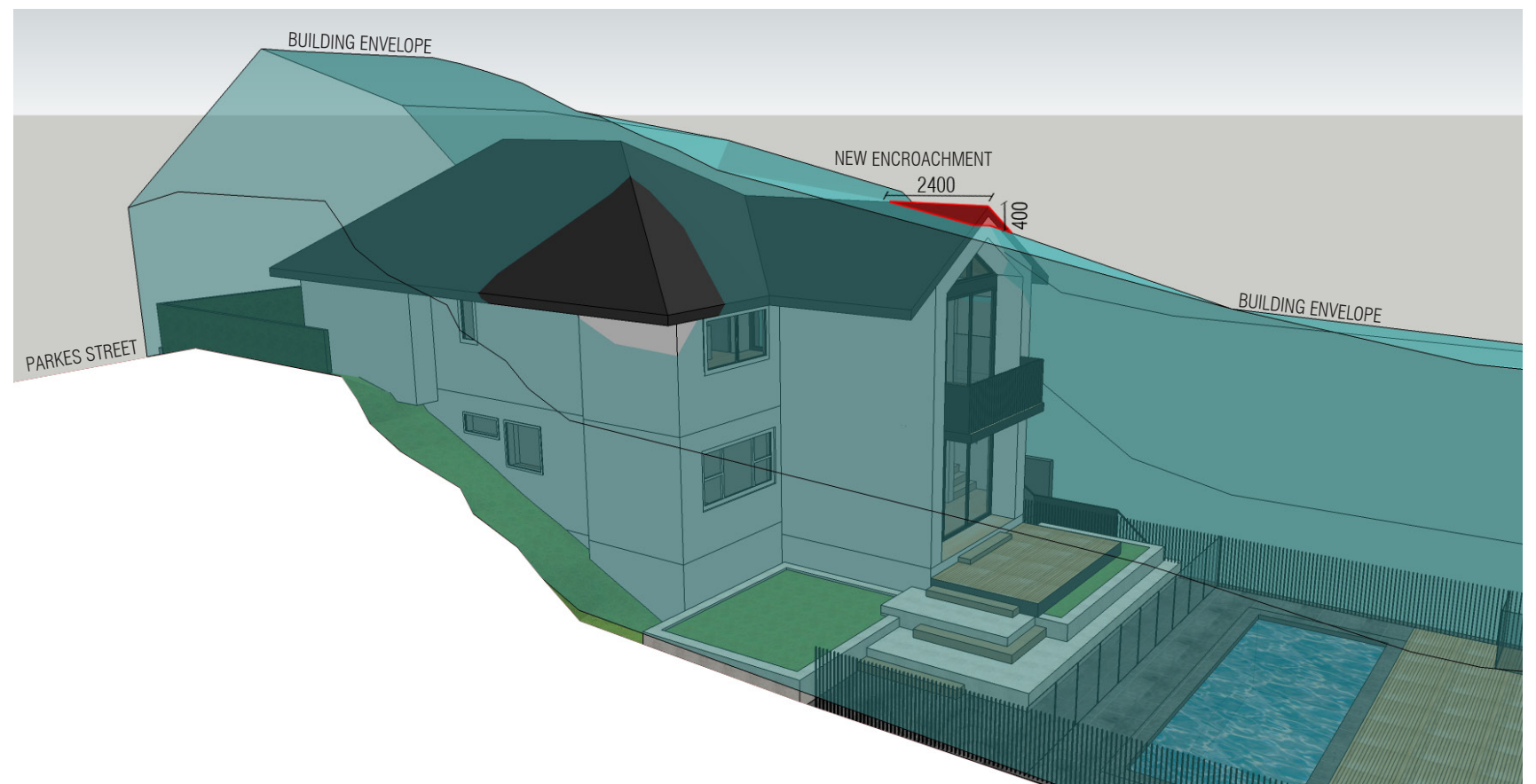
WEST ELEVATION



SOUTH ELEVATION



EAST ELEVATION



WEST ELEVATION