

Re: DA2025/0136 for Construction of a boat shed, waterway access stairs and landscaping at 60 Hudson Parade, Clareville

Introduction

This submission addresses the location of the proposed boatshed within the curtilage of No. 60 Hudson Parade Clareville. This submission supports the location of the boatshed on the southern side of the waterfront boundary and provides heritage justification for this location.

Authorship

This submission was prepared by Ruth Daniell, who has 35 years experience in heritage conservation including the area of conservation of modern architecture. Ruth attended MARC99, an ICROM initiated month long course in Helsinki, Finland as one of 18 international participants. Case studies included modernist houses integrated into a landscape setting by 20th century architects including Alvar Aalto. As a young graduate Ruth knew Bruce Rickard and frequently went to the ridge Street office or the family home in Wahroonga. Ruth prepared the Archival Recording of the house and is familiar with the building and the site. A full CV is attached.

The Architect Bruce Rickard

The house at No. 60 Hudson Parade is a significant house by the Sydney architect Bruce Rickard (1929-2010) who was "one of the most significant architects of the 20th century and a key member of the Sydney School. His practice spanned 60 years and has produced some of the most notable and recognisable houses of the period."¹ Possessing an architecture degree, Rickard sought other educational opportunities to broaden his practice and undertook a fellowship in landscape architecture in America under Ian McHarg, author of the influential book "Design with Nature". The book set out a practical blueprint for a new, healthier relationship between the built environment and nature.

Speaking about the Rickard House III at Cottage Point in an interview with "Houses" magazine, Bruce Rickard stated "You are virtually in the trees and there is this immediacy between you and the water and the trees and the landscape."

The House at No. 60 Hudson Parade Clareville

The house was originally designed by Bruce Rickard in the late 1980s for Jenny Mackenzie, a renowned early childcare professional. The house has a rectangular plan with a gabled roof with a central ridge. The house has two levels, a ground and first floor and a part lower ground floor level. Internally the roof trusses are exposed in the kitchen, dining and living room. The first floor has a terrace on the northern side.

The internal materials include face brick work, natural timber finish in the roof trusses, window frames, doors, joinery, floors, built-in furniture and cabinetry.

The western end of the house has a concrete structure of bush hammered circular columns and a concrete beam structure, with projecting concrete sill and wide eave overhangs.

¹ Bruce Rickard: A life in Architecture, J. Bracknell, P. Lonergan and S. Rickard editors, 2018.

In the tribute to Bruce Rickard, Orford wrote; “His works embody a holistic approach and sensitivity to the genius loci of a site through respect for and responsiveness to its natural features. Bruce instinctively augmented the existing landscape to reinforce the natural character of the site and the climatic performance of the site.”²

The Rickard house at No. 60 Hudson Parade achieves an “immediacy between you and the water and the trees and the landscape.”



Above. The western end of No. 60 Hudson Parade, showing the circular concrete columns and the concrete beams and the wide overhanging eaves. Right. View of the western elevation of No. 60 Hudson Parade with the “Rhythm Stick” sculpture by Stephen King, installed by Jennie Mackenzie in 2002, which is part of the iconography of the house when viewed from the water.

² Tribute - Bruce Rickard, Jacqueline Urford, HBO+EMTB- https://www.modernhouse.co/wp-content/uploads/2014/05/1_Tribute_BruceRickard.pdf

The Modified Drawings

The Modified Drawings responding to council's RFI show a smaller boatshed of a different configuration. The amended design does not require that any tree is cut down. The amended design only encroaches on the TPZ to the amount that is acceptable.

The Arborists Report

The Arborists Report was prepared by Martin Peacock Tree Care dated 29 January 2025.

The Arborist report dated 12 May 2025 addresses the amended design and finds that the smaller boatshed and the amended footprint has an acceptable impact on the trees in the south west.

Refer to both Arborist reports for additional detail.

Setting and Curtilage

It is important that potential Heritage Items retain their setting and curtilage. It is also important that any new development has a sympathetic and appropriate type of visual relationship with the nearby Heritage Item and its components.

The documents dealing with setting and curtilage of Heritage Items are:

- The Australian ICOMOS Burra Charter
- The NSW Heritage Office publication Heritage Curtilages

The NSW Heritage Office Guidelines Heritage Curtilages defines the term 'heritage curtilage' as:

'the area of land (including land covered by water) surrounding an item or an area of heritage significance which is essential for retaining and interpreting its heritage significance'.

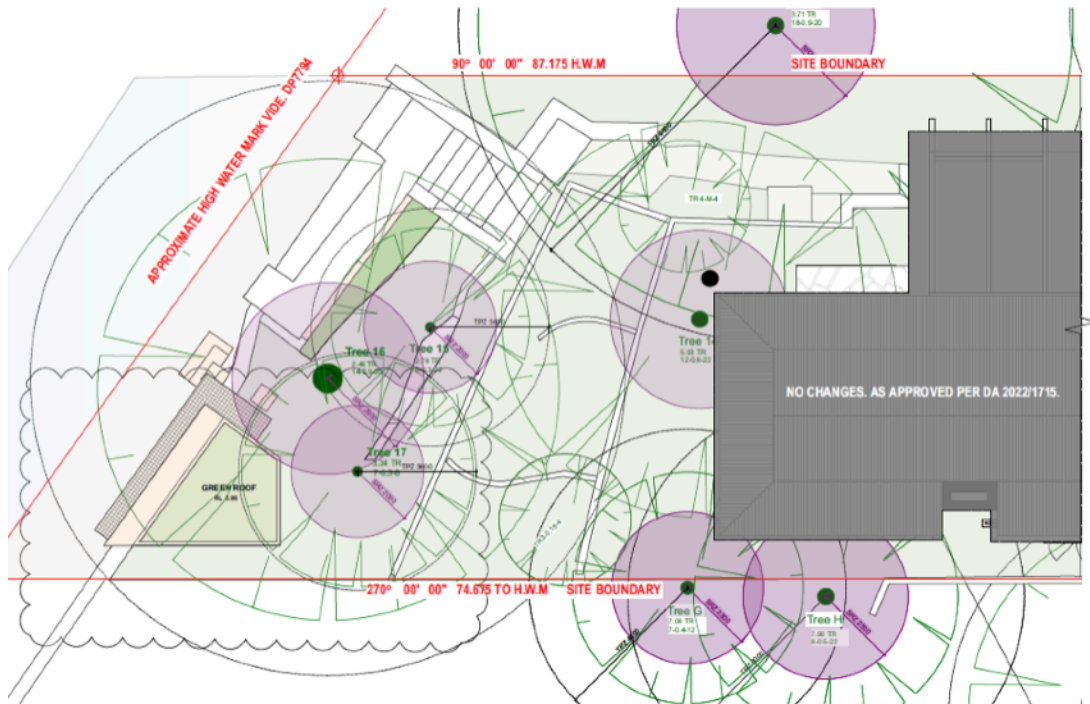
The Australian ICOMOS Burra Charter does not use/or define the notion of curtilage, however it does stress the importance of setting in Article 8:

Conservation requires the maintenance of an appropriate visual setting: eg form, scale, colour texture and materials. No new construction, demolition or modification, which would adversely affect the setting, should be allowed. Environmental intrusions, which adversely affect the setting, should not be allowed. Environmental intrusions, which adversely affect the appreciation or enjoyment of a place, should be excluded.

The curtilage of the No. 60 Hudson Parade is:

- The legal lot curtilage is the area of land within the site boundaries defined by the certificate of title, and this includes the footprint of the house (existing and approved) and the unbuilt upon areas of the site
- In addition there are views and vistas to the Heritage Item from a wider area. These are known as an expanded curtilage. This may include views and vistas to and from the house

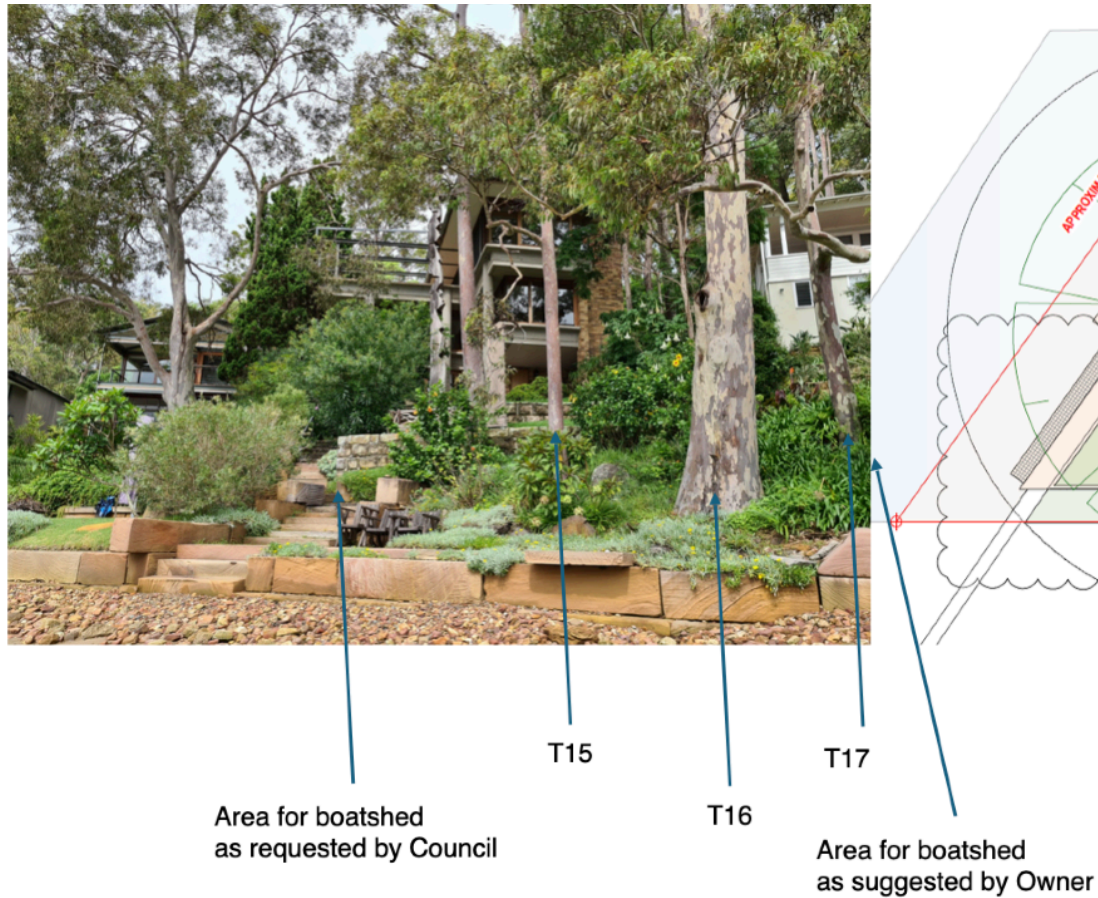
As the house is located at the end of a driveway, between adjacent properties, there are no views from Hudson Parade. The most important views are from the water.



The plan of the amended boatshed, showing a smaller boatshed with a footprint to minimise interference with thereto zone of the existing trees..

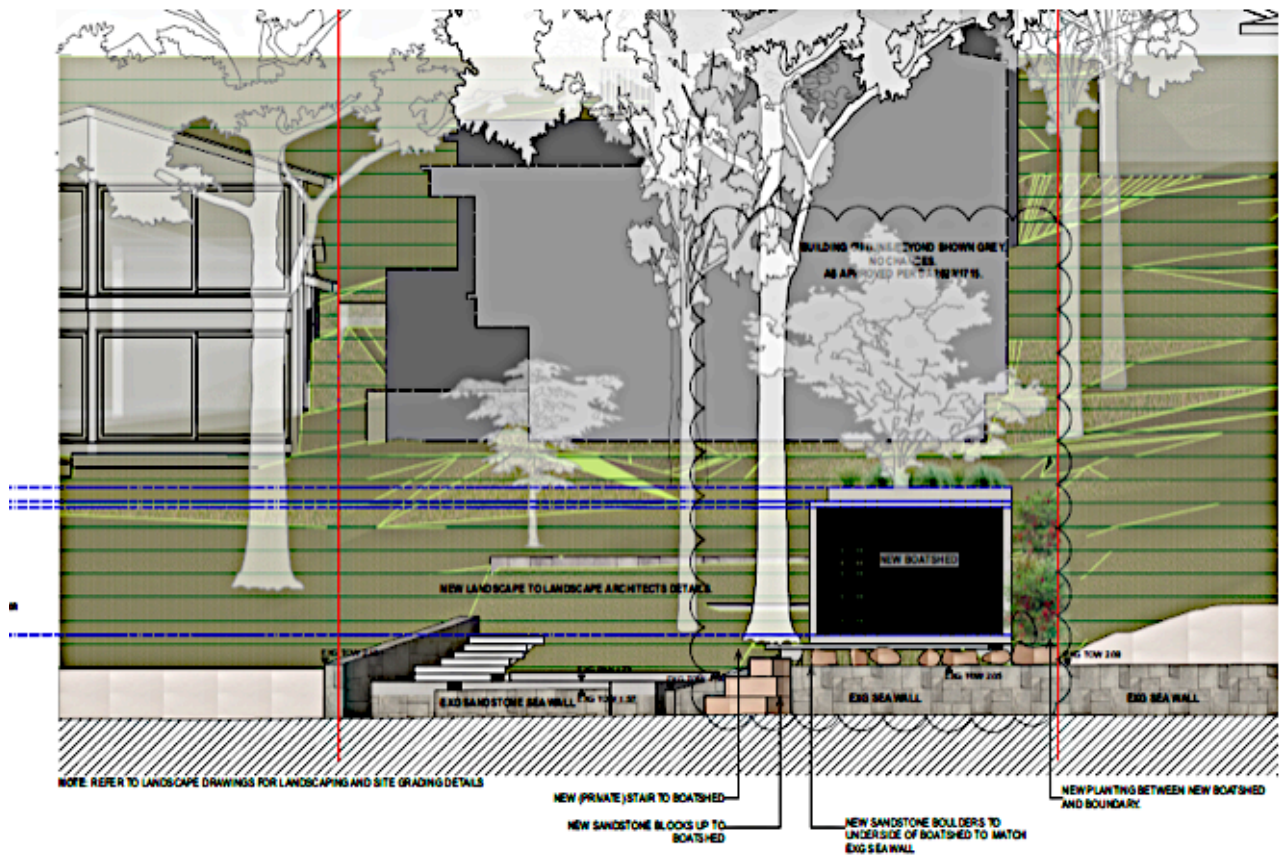
The South West Corner Location

The



View of the house near the water noting the two areas for the boatshed under discussion

following elevation has been provided to assist in understanding of the advantages of positioning a smaller redesigned boatshed on the south east corner of the site. It is noted that the boatshed will not obstruct views from the subject house and the house on the southern side as the boatshed is nestled into the ground, without affecting the root zone of existing trees.



Elevation (supplied) of the amended boatshed in the south east corner of the site.

The North West corner Location

The photo montage below shows the boatshed in the northwest corner of the site. This location interferes with the views and vistas to the house from the water and the prominence of the architecture of the distinctive western facade which has a concrete structure of bush hammered circular columns and a concrete beam structure, with projecting concrete sills and wide eave overhangs. The north west location for the boatshed also reduces the visibility of the Stephen King "Rhythm Stick" sculpture which is part of the iconography of the house.



Photo montage, supplied, showing the connectivity between the house and the water.

Conclusion

The connectivity between the house and the water; and from the water to the house, are important aspects of Bruce Rickard's work evidenced at No. 60 Hudson Parade Clareville.

In my professional opinion, the setting of the house, its expanded curtilage and the architectural design principles of Bruce Rickard where architecture is integrated with nature are best respected and maintained by the amended smaller boatshed design and the location of the boatshed in the south west corner of the site.

12 May 2025

Curriculum vitae

Ruth Elizabeth Daniell

Qualifications

Bachelor of Science (Architecture) 1976
Bachelor of Architecture (Hons) University of Sydney 1979
Bachelor of Laws UNSW 2016

Additional Study

The Conservation of Historic Structures
Institute of Advanced Architectural Studies University of York, United Kingdom, 1977
Certificate of Horticulture I & II Ryde TAFE 1987-1988
MARC 99 - The Conservation of Modern Architecture - Helsinki 1999 - ICCROM and the Helsinki University of Technology

Private Heritage Practice

2000 to Current - Private Practice as a heritage consultant

Heritage Positions - Local Government

Heritage Officer, Woollahra Municipal Council 1996 -1998

Heritage Positions - State Government

Senior Heritage Officer, Heritage Office of New South Wales
1999 - 2000

Heritage Advisory Positions

Coolamon Shire Council, Urana Shire Council Bland Shire Council, and Culcairn Shire Council 1993-1997

Heritage Studies

Narrandera Town Heritage Study 1995
20th Century Riverina Homesteads 1992-1998

Conservation Management Plans

Bonegilla Conservation Management Plan for the Commonwealth Department of Defence: CMP Eveleigh Locomotive Workshop (in conjunction with Otto Cserhalmi) 2002; Conservation Management Plan for the Infants Home Ashfield, *Old Government House Parramatta* (updated) CMP 2001 for the National Trust; *St Vincent's College, Potts Point CMP* 2010; *St Michaels Church Group Conservation Plan*, 2013.

Community Consultation and Workshops

Narrandera Heritage Study;

Imperial Avenue DCP Community Workshop for Waverley Council, 2004: and *Reuse Options Workshop* for Block 19 Bonegilla, Department of Defence and the Australian Heritage Commission.

Strategic Planning Documents

The Paddington Development Control Plan for Woollahra Council, 1998-1999 (author and project director).

Imperial Avenue DCP, 2004 for Waverley Council 1999 (author and project director).

Recent Projects

Bathurst Courthouse Security and Amenities Upgrade 2019-2020

Orange Courthouse Security and Amenities Upgrade 2019

Goodmans Building Annandale Restoration Works 2020

10 Jack Street Riverstone Review of Curtilage and Heritage Listing 2020

72-28 Foveaux Street Surry Hills Heritage Impact Statement for the Refurbishment of a 1970s high rise building in the context of a Conservation Area 2019-2020

Projects In Woollahra

420 Edgecliff Road Woollahra Heritage Impact Statement

337 Edgecliff Road Woollahra Heritage Impact Statement

62-64 Edgecliff Road Woollahra Heritage Impact Statement

301 Edgecliff Road Woollahra Heritage Impact Statement

313A Edgecliff Road Woollahra Heritage Impact Statement

69 Edgecliff Road Woollahra Heritage Impact Statement

337A Edgecliff Road Woollahra Heritage Impact Statement

412 Edgecliff Road Woollahra Heritage Impact Statement

430 Edgecliff Road Woollahra Heritage Impact Statement

1 Fisher Avenue Vaucluse Heritage Impact Statements, Conservation Schedule of Works, Photographic Archival Recording

16 Wentworth Road Vaucluse Heritage Impact Statement, Photographic Archival Recording

Awards

The Leslie Wilkinson Prize for Architectural History 1975

RAPI (Royal Australian Planning Institute) Commendation Award for Excellence in Planning for the '*Paddington Development Control Plan*', 1999.

Woollahra Conservation Award (2006, 2008 and 2011) - 'Taj Mahal' Wiston Gardens, Double Bay for conservation work involving preservation, restoration; 'Grove House', Woollahra for a new building in a

conservation area; and No. 64 Paddington Street, Paddington - Alterations and Additions in a Conservation Area.

Publications

Imported Styles, a book chapter in *The Early Canberra House*, ed P. Freeman pub. Federal Capital Press

1996.

Expert Witness

Land and Environment Court NSW
