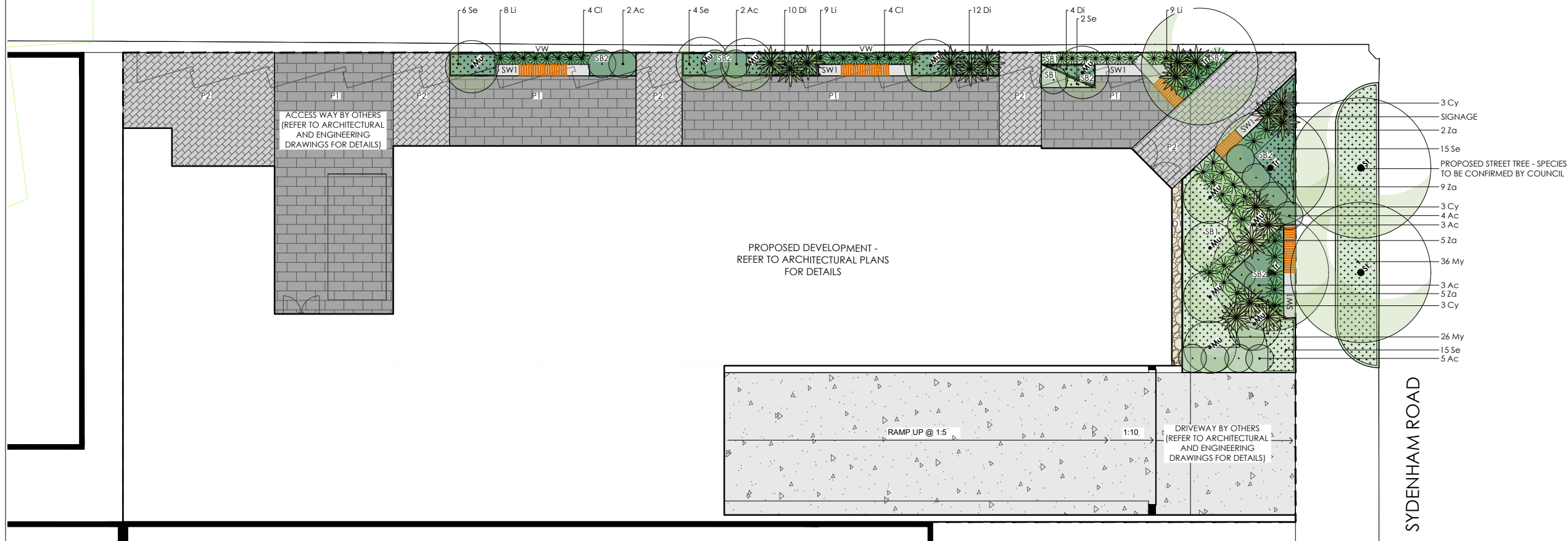


CHARLTON LANE



LEGEND

SITE BOUNDARY

HARD ELEMENTS

- PAVING TYPE 1**
Large format unit pavers
Refer to architectural plans for levels and details
- PAVING TYPE 2**
Small format unit pavers
Refer to architectural plans for levels and details
- VERTICAL WIRES**
Vertical wires or trellis to support climbers for vertical greenery

SOFT ELEMENTS

- SB1 SHRUB BED TYPE 1 - RAISED MASONRY PLANTER**
300mm high planter box
Mulch: 20mm grade tan bark mulch
- SB2 SHRUB BED TYPE 2 - RAISED MASONRY PLANTER**
600mm high planter box
Mulch: 20mm grade tan bark mulch
Planters above basement - min 1000mm depth
Mulch: 20mm grade tan bark mulch.
- DRAINAGE EDGE**
Integrated subsoil drainage along edge of building with gravel - Colour: TBC
- CONCRETE SEATING WALL WITH INTEGRATED BENCH**
- PROPOSED EVERGREEN TREE**
- PROPOSED SHRUBS AND ACCENT PLANTS**
- PROPOSED GROUNDCOVER/ MASS PLANTING**

Notes:

- Mature height and width of planting dependent upon site conditions, aspect and water requirements.
- All gardens and turf should be adequately irrigated.
- All areas and extents to be confirmed and checked on site prior to initiating construction.
- Refer to engineering drawings and architectural plans for drainage details, retaining wall details, heights and dimensions of planter boxes
- All paving to be trafficable

PLANTING TABLE

Code	Botanical Name	Common Name	Height (m)	Width (m)	Density	Pot Size	No	
Trees								
Tr	<i>Tristanopsis laurina</i> 'Luscious'	Watergum	6-8m	4-6m	A s Shown	75L	3	
Mu	<i>Murraya paniculata</i>	Mock orange blossom	3m	2m	A s Shown	45L	11	
St	Proposed street tree - to be confirmed by council							2
Shrubs								
Ac	<i>Acacia cognata</i> 'Limelight'	Bower Wattle	1m	1m	A s Shown	200mm	19	
Climbers								
Cl	<i>Clematis glycinoides</i>	Native Clematis	3m	0.2m	1m C	140mm	8	
Accent Plants								
Za	<i>Philodendron</i> 'Xanadu'	Xanadu	1.2m	1.2m	A s Shown	140mm	21	
Li	<i>Liriope</i> 'Just Right'	Flax Lily	0.6m	0.6m	A s Shown	140mm	26	
Cy	<i>Cycas revoluta</i>	Cycad	1.2m	1.2m	A s Shown	200mm	9	
Groundcovers								
My	<i>Myoporum parvifolium</i> 'Yareena'	Creeping Boobialla	0.2m	1.5m	2/m ²	140mm	62	
Se	<i>Senecio</i> 'Blue Chalk Sticks'	Blue Chalk Sticks	0.3m	0.6m	4/m ²	140mm	42	
Di	<i>Dichondra</i> 'Silver Falls'	Kidney Weed	0.2m	0.4m	4/m ²	140mm	26	

Notes
Contractor to confirm numbers on site prior to ordering planting stock.
* Prune to tree form

INSPIRATION IMAGERY



Integrated seating Vertical wires for climbers to laneway edge Evergreen plantings

PLANT IMAGERY



Tristanopsis laurina 'Luscious' *Murraya paniculata* *Acacia cognata* 'Limelight' *Myoporum parvifolium* 'Yareena' *Senecio* 'Blue Chalksticks'

LANDSCAPE SPECIFICATION NOTES

SITE PREPARATION
Locate any underground and overground services & ensure no damage occurs. Levels on plan are nominal only & all dimensions to be checked on site prior to commencement. Final structural integrity of all items shall be the sole responsibility of landscape contractor.

ELIMINATE WEEDS
Remove all existing weeds by hand, wiping or spraying with a glyphosate based herbicide. Weed control shall never be performed by mechanical cultivation or by scraping. Herbicide spraying is to be used to eliminate all existing weeds 30 days prior to planting.

EXCAVATION & SUB SOIL PREPARATION
Excavate garden beds to the depth required and rip or scarify base & sides of pit to a minimum depth of 150mm.

SUB SOIL DRAINAGE
Install drainage layer where there is surface water runoff draining into garden bed areas & where the existing sub-soil has more than 50% clay composition & there is a risk of subsurface water ponding.

REUSE EXISTING TOPSOIL
Existing site topsoil should be salvaged & appropriately stockpiled where possible.

IMPORTED TOPSOIL
Quality System: AS 4419 or as specified below.
Turf Areas: 'Turf Underlay' as supplied by, ANL p: 02 9450 1444 or approved alternative.
Tree Pit and Shrub Planting: 'Premium Garden Mix' as supplied by, ANL p: 02 9450 1444 or approved alternative.

PLANTING
Health & Vigour: Supply plants with foliage size, texture & colour consistent with that shown in healthy specimens of the species.
Balance of Crown: Supply plants with max. variation in crown bulk on opposite sides of stem axis, +/- 20%.
Stock selection should be based on NATSPEC Guide Specifying Trees: a Guide to Assessment of Tree Quality.

STAKING
Install 2 x 1800mm 40x40 hardwood timber stakes with hessian ties to all trees. Provide appropriate support considering exposure to prevailing winds. Stakes and hessian ties to be removed as soon as the tree is self supporting.

MULCHING
Quality system: AS 4454
All planting area to be mulched with 50mm depth of river pebbles unless otherwise specified. Keep mulch 100mm away from plant stem & form a well to stop excessive water runoff. Finish flush with adjacent surfaces.

WATERING
Water in immediately after plant installation & allow for soil settlement. For the first 2 to 4 weeks after planting, the root zone & immediate surrounds must be kept moist. Continue watering until plants have established.

All services and infrastructure locations are indicative only. Contractor to confirm location of all services and infrastructure prior to initiating landscape works.

NOTE: CONTRACTOR TO CONFIRM LOCATION OF ALL SERVICES AND INFRASTRUCTURE PRIOR TO INITIATING LANDSCAPE WORKS.

	ISSUE	REASON FOR ISSUE	DATE	DESIGN	CHECKED	CLIENT Catalina Twelve Pty Ltd	CONSULTANT PLOT DESIGN GROUP	CONTACT DETAILS PRIMARY CONTACT: PHOEBE GORDON EMAIL: phoebeg@plotdesigngroup.com.au PHONE: 0422 917 937 ABN: 19629570396	ASSOCIATED CONSULTANTS ARCHITECT: Wash Architects	PROJECT 2 Sydenham Road Brookvale	DRAWING LANDSCAPE PLAN (GROUND LEVEL) - SHEET 1	SCALE A1 1:100 A3 1:200
	A	Draft for coordination	11.09.2024	ZK	PG						PROJECT No 24-530	DRAWING No. LS501.1
	B	For Approval	27.09.2024	ZK	PG							