



notes
.



Landscape Plan - Structure
Lots 4 + 5
23rd December 2019
Development Application
Scale 1 : 100 @ A1

*living in landscapes
of the palm beach ridge*

26 Ralston Road, Palm Beach NSW
Lots 4 + 5
for
Tony + Georgina Nassif

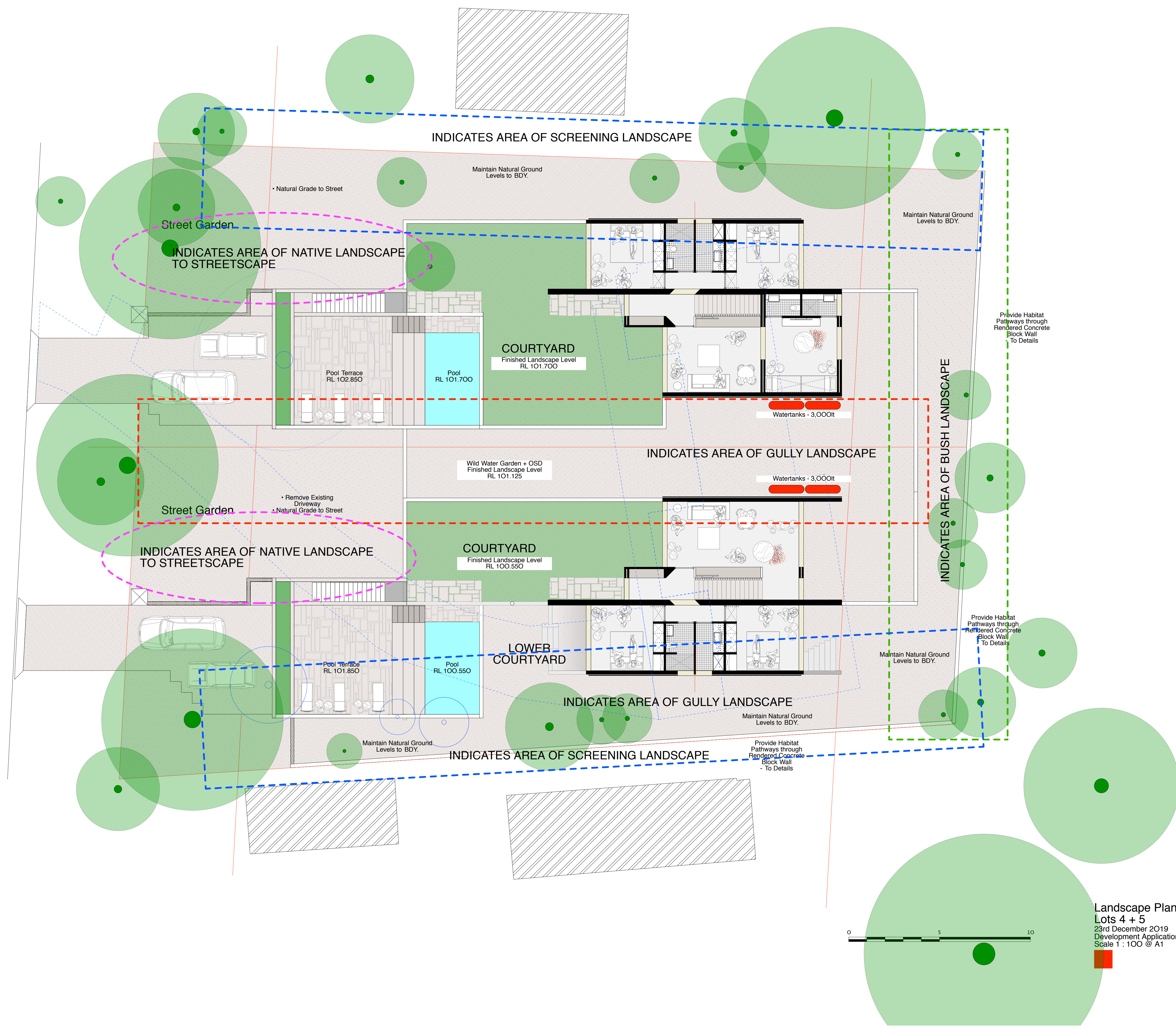
stephen lesiuk

po box 30 palm beach nsw 2108
tel: 0414 468 186
email stephenlesiuk@mac.com





notes
.



Landscape Plan - Principles
Lots 4 + 5
23rd December 2019
Development Application
Scale 1 : 100 @ A1

*living in landscapes
of the palm beach ridge*
26 Ralston Road, Palm Beach NSW
Lots 4 + 5
for
Tony + Georgina Nassif

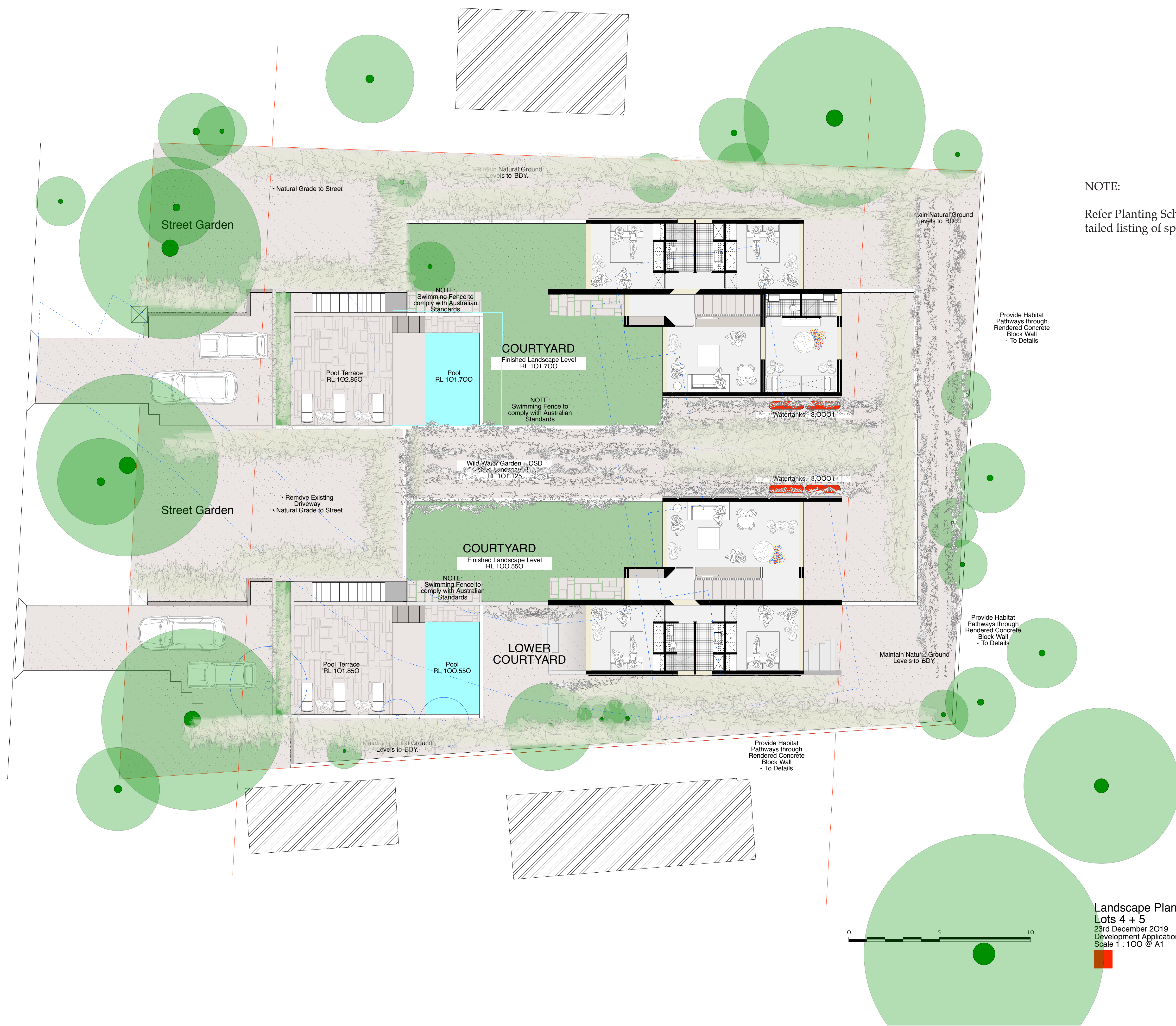
stephen lesiuk

po box 30 palm beach nsw 2108
tel: 0414 468 186
email stephenlesiuk@mac.com





notes
.



NOTE:
Refer Planting Schedule for detailed listing of species

Landscape Plan - Ground Covers
Lots 4 + 5
23rd December 2019
Development Application
Scale 1 : 100 @ A1


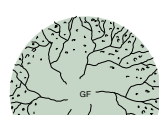
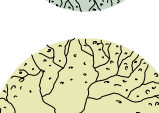

*living in landscapes
of the palm beach ridge*
26 Ralston Road, Palm Beach NSW
Lots 4 + 5
for
Tony + Georgina Nassif

stephen lesiuk

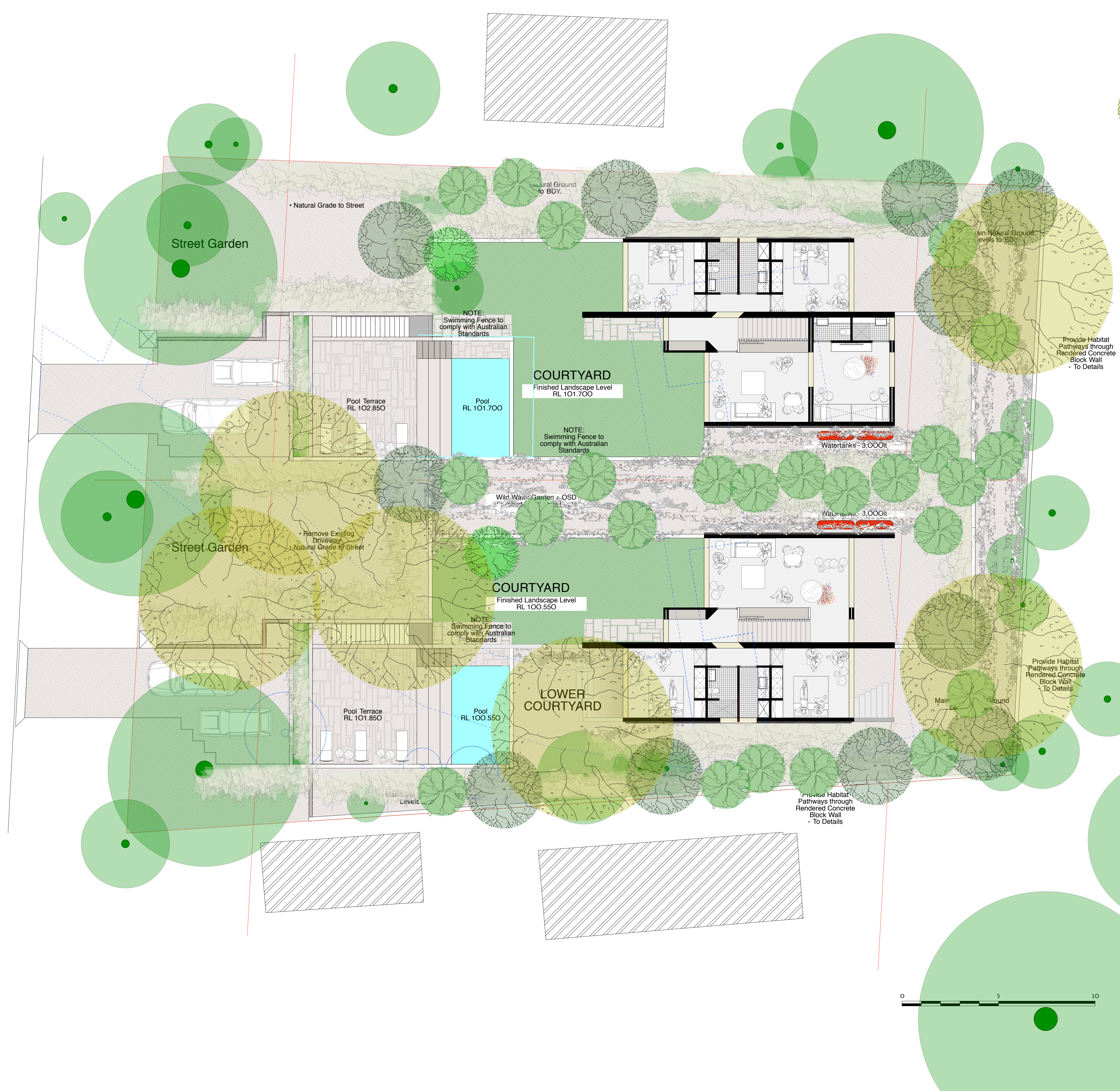
po box 30 palm beach nsw 2108
tel: 0414 468 186
email stephenlesiuk@mac.com



notes

-  *Livistona australis*
-  *Grevillea rostrata*
-  *Argophora cuneata*
-  *Fraxipari*

NOTE:
Refer Planting Schedule for detailed listing of species



*living in landscapes
of the palm beach ridge*

26 Ralston Road, Palm Beach NSW
Lots 4 + 5
for
Tony + Georgina Nassif

Landscape Plan - Canopies
Lots 4 + 5
23rd December 2019
Development Application
Scale 1 : 100 @ A1

stephen lesiuk

po box 30 palm beach nsw 2108
tel: 0414 468 186
email stephenlesiuk@mac.com

Planting Schedule



26 Ralston Road Palm Beach NSW

Dec-19

notes

.



Category	Symbol	Botanic Name	Common Name	Function	Height (at maturity)	Height (at purchase)	Qty	Size	Comments	Additional
Grasses	L1	Lamandra confertifolia 'Wingara'	Matt Rush	insects	0.3	n/a		100mm pot	• plant at 300crs	
	L2	Lamandra 'Lime Tiff'		insects	0.5	n/a		100mm pot	• plant at 300crs	
	L3	Lamandra longifolia 'Tanika'		insects	0.5	n/a		100mm pot	• plant at 300crs	
	L4	Lamandra longifolia 'Kachinus deluxe'		insects	0.8	n/a		200mm pot	• plant at 450crs	
	L5	Lamandra longifolia 'Nyala'		insects	0.9	n/a		200mm pot	• plant at 450crs	
	D1	Dianella revoluta 'Little Rev'		insects	0.3	n/a		100mm pot	• plant at 300crs	
	D2	Dianella caerulea 'CassiaBlue'		insects	0.5	n/a		100mm pot	• plant at 300crs	
	Ph	Phormium tenax 'Flamin'	Red Flax	insects	0.9	n/a		200mm pot	• plant at 450crs or as instructed	
Shrubs	BE	Banksia ericifolia	Heath Banksia	screen planting + birds	4 to 7m	1.2m		25lit	• refer drawing + site instructions	
	BM	Banksia myrtillofolia		birds	3m	1.2m		25lit	• refer drawing + site instructions	
	CP-S	Calistemon 'Purple Splendor'		birds	2m	n/a		200mm pot	• refer drawing + site instructions	
	CL-S	Calistemon 'Lavender Shower'		birds	2 to 3m	n/a		200mm pot	• refer drawing + site instructions	
	CC-P	Calistemon 'Candy Pink'		birds	3 to 4m	n/a		200mm pot	• refer drawing + site instructions	
	GBA	Grevillea banksii 'Alba'		birds	3m	n/a		200mm pot	• refer drawing + site instructions	
	JS	Jacksonia scoparia	Native Dogwood	birds	4m	n/a		200mm pot	• refer drawing + site instructions	• choose any cultivar
	GR	Grevillea rosmarinifolia	Rosemary Grevillea	birds	1.8m	n/a		200mm pot	• refer drawing + site instructions	
	GRG	Grevillea 'Ridlyn Gordon'		birds	1 to 1.5m	n/a		200mm pot	• refer drawing + site instructions	
	GS	Grevillea 'Superb'		birds	1.5 to 2m	n/a		200mm pot	• refer drawing + site instructions	
Trees	CG	Ceratopetalum gummiferum	NSW Christmas Bush	birds	3 to 6m	1.2m		25lit	• refer drawing + site instructions	
	BS	Banksia serrata		birds	15m	1.2m		25lit	• refer drawing + site instructions	
	BI	Banksia integrifolia		birds	15m	1.2m		25lit	• refer drawing + site instructions	
	WF	Waterhousea floribunda	Weeping Lilly Pilly	screen planting	8m	1.2m		25lit	• refer drawing + site instructions	
	MI	Melaleuca linearifolia 'Snow in Summer'		screen planting	6 to 8m	1.2m		25lit	• refer drawing + site instructions	
	CV	Callistemon viminalis	Weeping Bottlebrush	birds	8m	1.2m		25lit	• refer drawing + site instructions	
	AC	Angophora costata	Smooth-barked apple			1.2m		25lit		
	GF	Glochidion ferdinandi	Cheese Tree			1.2m		25lit		
	LA	Livistona australis	Cabbage Palm			1.2m		25lit		
	F	Plumeria spp.	Frangipanis	cultural	to 9m			as available		• Slow growing - a generation plus to get to maturity
Other	DE	Doryanthea excelsa	Gymea Lily	birds		n/a		25lit	• refer drawing + site instructions	• Purchase a variety of sizes - they should not look the same
	B	Bromeliad spp. spp.	Bromeliad			n/a		200mm pot	• also use existing - refer drawings + site instructions	
	M	Macrozamia communis	Burrawang	cultural		n/a		as available	• also use existing - refer drawings + site instructions	• use 'cycads' as available from client
Ferns	AN	Asplenium nidus	Birdsnest Fern			n/a		200mm pot	• spacings and positions tbd on site	
	CA	Cyathea australis	Rough Tree Fern							
Gingers	GSS	Ginger Spp (as available)	Gingers			n/a		as available	• spacings and positions tbd on site	• dwarf Strelitzia Spp + Heliconia Spp also to be used
Ground covers	VH	Viola hederacea	Native Violet			n/a		100mm pot	• plant at 150crs	
	EK	Erigeron karvinskianus	Seaside Daisy			n/a		100mm pot	• plant at 300crs	
	CN	Chamaemelum nobile	Chamomile (Roman)			n/a		100mm pot	• plant at 150crs	
Vines	PP	Pandorea pandorana	Wonga wonga vine	spilling over		n/a		200mm pot	• refer drawing + site instructions	• please advise cultivar
	PS	Pandorea jasminoides	Bower of Beauty	spilling over		n/a		200mm pot	• refer drawing + site instructions	• please advise cultivar
	CA	Cissus antarctica	Native Grape	ground cover + trellis		n/a		200mm pot	• refer drawing + site instructions	
	HV	Hardenbergia violacea	Native Sasparrilla	spilling over		n/a		200mm pot	• refer drawing + site instructions	• please advise cultivar
	NOTE • None of these vines have suckers or tendrils • The native grape will require wires or similar									
Herbs + Other	R		Rosemary			n/a		200mm pot	• Site instructions	
	LG		Lemon Grass			n/a		200mm pot	• Site instructions	
			Mints (European + Asian)			n/a		100mm pot	• Site instructions	
			Basilis (European + Asian)			n/a		100mm pot	• Site instructions	
			Correaender			n/a		100mm pot	• Site instructions	
			Thymes			n/a		100mm pot	• Site instructions	
			Bay Tree			n/a		200mm pot	• Site instructions	
	LT		Lemon Tree		1.8+m			as available	• Site instructions	

NOTE • For native grasses, tubstock can be substituted
• Mulch must only contain organic decomposing material
• Soil must be a minimum of 20% spent mushroom compost by way of volume and sand loam material
• Sub-soil must be prepared prior to placement of soil
• Sub-soil is to be broken up to a min. of 300mm and treated with a chemical 'clay-breaker'
• ph tests to be conducted prior to placement of soil to ensure building chemicals are neutralised - ph NEUTRAL
• ALL soil to be watered prior to placement of plants to ensure against 'soil drop'
• Prior to planting, ALL planting areas are to be treated with organic fertilizers, eg 'blood + bone' watered in
• Lawn areas are to be constructed over liable soil and sub-strate
• Exterior lighting is to be positioned after planting - all cables are to be dug in
• All irrigation is to be dug in after planting

living in landscapes
of the palm beach ridge

26 Ralston Road, Palm Beach NSW
Lots 4 + 5
for
Tony + Georgina Nassif

stephen lesiuk

po box 30 palm beach nsw 2108
tel: 0414 468 186
email stephenlesiuk@mac.com

