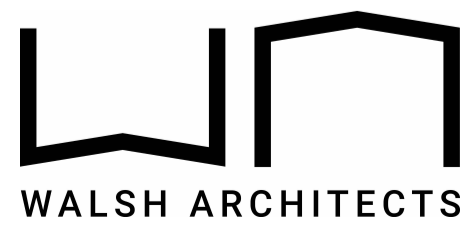




EXTERNAL MATERIAL LEGEND
 CN:01 - CONCRETE PRECAST - STANDARD GREY COLOUR
 CN:02 - CONCRETE PRECAST - PAINTED MONUMENT
 GL:01 - CLEAR GLAZING TO FUTURE SECTION J REQUIREMENTS
 RD:01 - METAL ROLLER DOOR - MONUMENT



15 Tench St.
 Kingston ACT 2604
 E: scott@walsharchitects.com.au
 P: 0465 049 880
 Nominated Architect: Scott Walsh
 ACT 26241 NSW 10366

REV NO.	DESCRIPTION	REV DATE	EXTERNAL FINISHES
A	ISSUE FOR DA APPROVAL	05.09.2024	DA910
			REVISION A
			SCALE @ A1
			2 SYDENHAM ROAD BROOKVALE