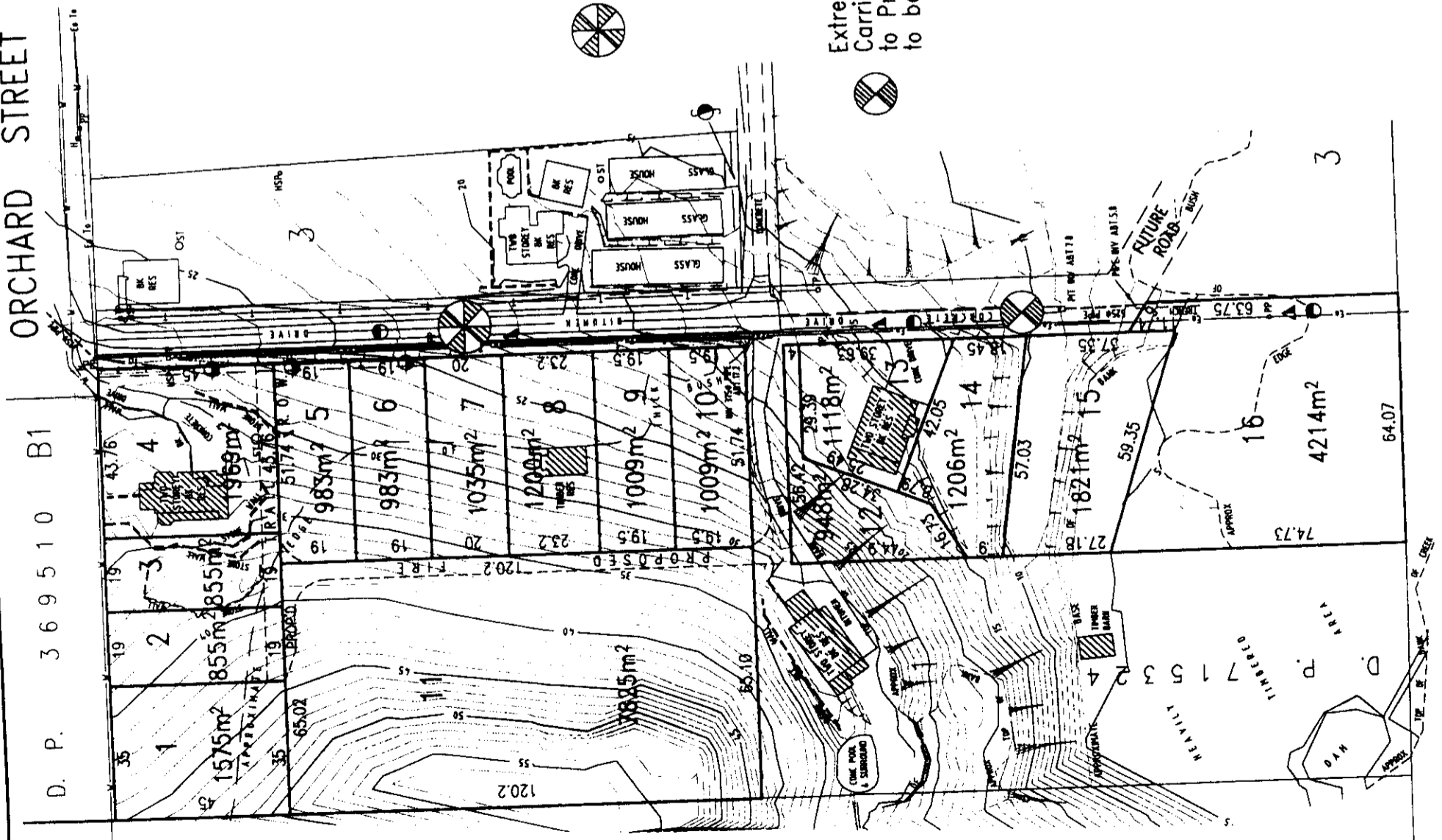


ORCHARD STREET

D. P. 3 6 9 5 1 0 B1

D. P. 1 1 7 8 4

2 1 1 3 - 2 0 3 0



NOTE:

- LEVELS SHOWN ARE BASED ON AUSTRALIAN HEIGHT DATUM
- ORIGIN OF LEVELS - P.M. 25544 R.L. 8.69 A.H.D. LOCATED NEAR THE INTERSECTION OF ORCHARD & GARDEN STREETS
- CONTOURS ARE AT 1 METRE INTERVALS AND ARE APPROXIMATE ONLY - LEVELS CRITICAL TO DESIGN SHOULD BE DETERMINED BY SURVEY AND NOT BY INTERPOLATION
- BASIC LEVEL & DETAIL SURVEY ONLY - THE POSITION OF IMPROVEMENTS ARE APPROXIMATE
- FEATURES CRITICAL TO DESIGN SHOULD BE LOCATED BY A MORE ACCURATE SURVEY
- NO FINITE LOCATION OF ROCK OUTCROPS, TREES OR OTHER SPECIFIC NATURAL FEATURES HAVE BEEN LOCATED FOR LOTS 1 & 2, D.P. 715324 AND LOTS 5 & 6, D.P. 749791
- SERVICES SHOWN HAVE BEEN LOCATED PARTLY BY SURVEY AND SCALED FROM INFORMATION PROVIDED BY THE RELEVANT SERVICE AUTHORITIES - THE SERVICE AUTHORITIES SHOULD BE CONTACTED TO DETERMINE THEIR EXACT LOCATION
- THE ORIENTATION OF THE NORTH POINT HAS BEEN TAKEN FROM THE I.S.G. CO-ORDINATED OF P.M. 25544 AND S.S.M. 43671
- UNLESS SHOWN OTHERWISE ALL TREES ARE EUCALYPTUS
- PIT & PIPE INVERTS ARE APPROXIMATE AS DIRECT MEASUREMENTS ARE DIFFICULT TO DETERMINE

NOTE:

DIMENSIONS AND AREAS HEREON ARE APPROXIMATE AND ARE SUBJECT TO SURVEY

LOTS 11 & 16 ARE TO BE CREATED AS PUBLIC RESERVES

- RIGHT OF CARRIAGEWAY AND EASEMENT FOR SERVICES 2 WIDE
- FOR DETAILS OF EASEMENTS REFER TO TITLE INFORMATION
- ▲ EASEMENT FOR ELECTRICITY PURPOSES 7.62 WIDE - VIDE TSFR J954099
- EASEMENT FOR SERVICES 1.525 WIDE - REFER TITLE INFORMATION

LEGEND

- dh - HYDRANT
- OST - SEPTIC TANK
- STP - TELSTRA PIT
- PP - POWER POLE
- HSP - HOUSE SERVICE POWER POLE
- SV - STOP VALVE
- SP - SEWER INSPECTION POINT
- GIP - GULLY PIT
- TELSTRA CABLE
- OVERHEAD ELECTRICITY
- OVERHEAD TELSTRA CABLE
- WATER MAIN

ISSUE	INITIAL	DATE
B	WEST BDY OF PROPD ROAD MOVED 2m EAST	15/11/02
A		25/10/02

BYRNE & ASSOCIATES PTY LIMITED
CONSULTING SURVEYORS & ENGINEERS

63 WATERLOO STREET
NARRABEEN 2101
Ph: (02) 9913 7110 Fax: (02) 9913 1583
Email: byrnesurvey@ozemail.com.au

PLAN OF PROPOSED SUBDIVISION OF LANDS OFF ORCHARD STREET (SECTOR 10A) WARRIEWOOD VALLEY

Date of Survey: 28/05/98
Scale: 1:1000
Plan No. A2 - 9441 P