

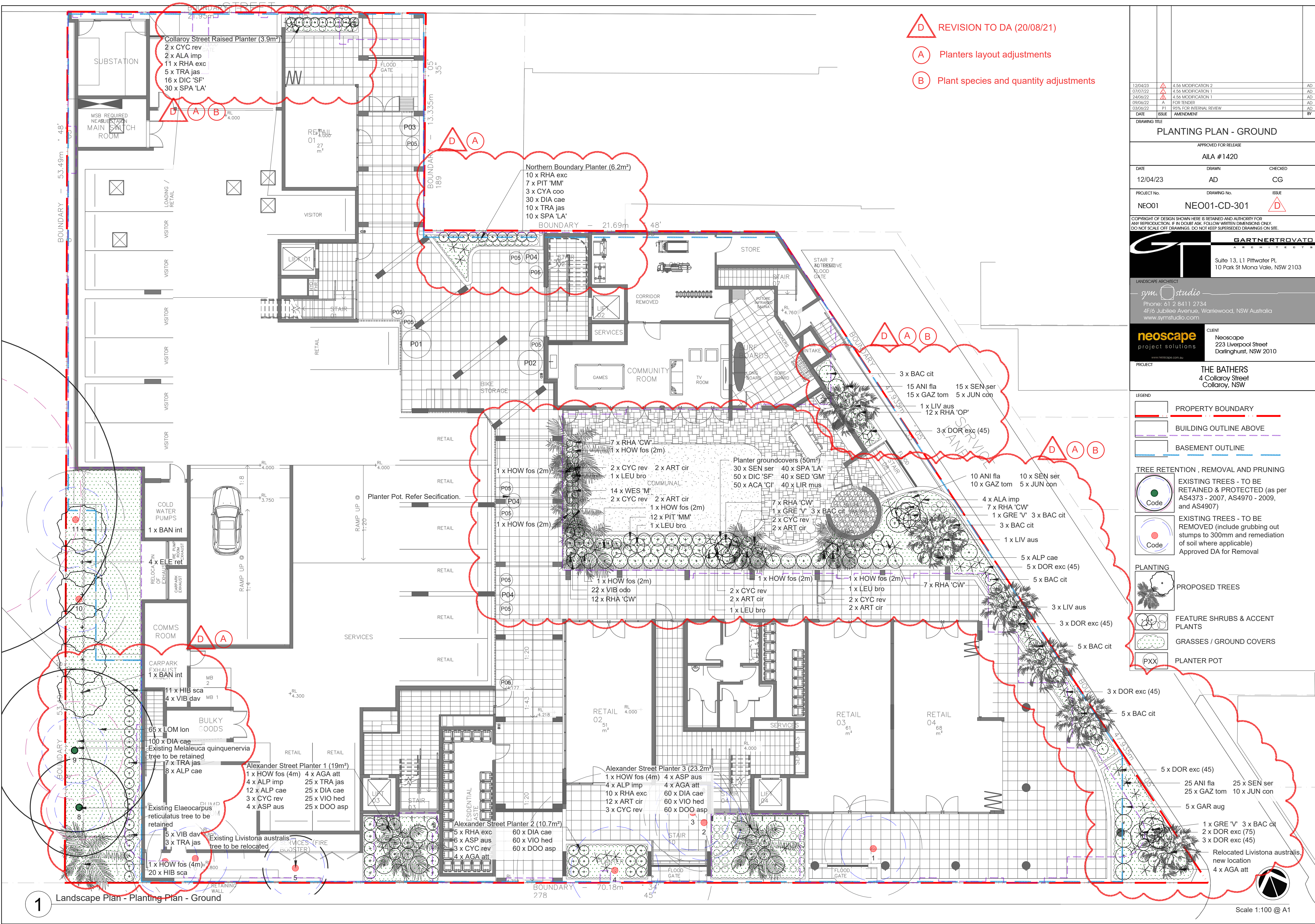
PLANT SCHEDULE

REVISION TO DA (20/08/21)
Plant quantity adjustments

GROUND FLOOR PLANT SCHEDULE						
Abbreviation	Botanical Name	Common Name	Mature Height (m)	Pot Size	Qty	Comments
Trees						
BAC cit	Backhousia citriodora	Lemon Myrtle	3-5	45L	30	Caliper 30mm. Sub surface tree anchor system
BAN int	Banksia integrifolia	Coast Banksia	4-15	100L	2	Caliper 50mm. Sub surface tree anchor system
ELA ret	Elaeocarpus reticulatus 'Primma Donna'	Blueberry Ash	6-8	100L	4	Caliper 50mm. Sub surface tree anchor system
HOW fos (2m)	Howea forsteriana	Kentia palm	8-6	2.0m cl st	6	2.0M clear stem. Sub surface tree anchor system
HOW fos (4m)	Howea forsteriana	Kentia palm	8-6	4.0m cl st	3	4.0M clear stem. Sub surface tree anchor system
LIV aus	Livistona australis	Cabbage-tree Palm	25-30	6.0m cl st	5	6.0M clear stem. Sub surface tree anchor system
GRE 'V'	Grevillea 'Vaughns'	Grevillea	3-4	330mm	3	Weeping Standards. Available Botanica Nursery NSW
Shrubs						
ALP cae	Alpina caerulea	Native Ginger	3	35L	24	
GAR aug	Gardenia augusta 'Florida'	Florists Gardenia	1	400mm	5	
PIT MM	Pittosporum tobira 'Miss Muffet'	Miss Muffet Pittosporum	0.8-1	300mm	21	
RHA CW	Raphiolepis indica 'Cosmic White'	Indian Hawthorn	0.6	200mm	40	
RHA OP	Raphiolepis indica 'Oriental Pearl'	Indian Hawthorn	1	200mm	12	
VIB dav	Viburnum davidii	David Viburnum	1	300mm	9	
VIB odo	Viburnum odoratissimum	Sweet Viburnum	4	45L	22	Minimum 1.5m height
WES M	Westringia fruticosa 'Mundi'	Coastal Rosemary	0.3	300mm	14	
Accents						
AGA att	Agave attenuata	Foxtail Agave	1	300mm	16	
ALA imp	Alcantarea imperialis 'Ruby'	Imperial Bromiliad	1.5-3	400mm	18	
ANI fla	Anigozanthos flavidus	Kangaroo Paw	2	140mm	50	
ART cir	Arthropodium cirratum	Ranga Lily	0.6	200mm	22	
CLI min	Clivea miniata 'Shade Master'	Clivia	0.5	200mm	20	
CYC rev	Cycas revoluta	Sago Palm	1-2	400mm	21	
DOR exc	Doryanthes excelsa	Gymea Lily	2	45L	23	
DOR exc	Doryanthes excelsa	Gymea Lily	2	75L	4	
LEU bro	Leucophyta brownii	Cusion Bush	1	140mm	4	
RHA exc	Rhapis excelsa	The Lady Palm	2-4	300mm	44	
SEN ser	Senecio serpens	Blue Chalksticks	0.2-0.3	140mm	80	
SPA LA	Spathiphyllum 'Little Angel'	Peace Lily	0.6	140mm	80	
Ferns						
ASP aus	Asplenium australasicum	Birds Nest Fern	1-2	45L	23	
CYA coo	Cyathea cooperi	Australian Tree Fern	5-20	2-3 feet	6	
DOO asp	Doodia aspera	Pickly Rasp Fern	0.5	140mm	145	
Grasses & Groundcovers						
ACA 'CI'	Casaurina glouca 'Cousin It'	Cousin It	0.3	140mm	50	
DIA cae	Dianella caerulea	Paroo Lily	0.5	Tube	275	
DIC SF	Dichondra argentea 'Silver Falls'	Silver Kidney Creeper	0.3	140mm	66	
GAZ tom	Gazania tomentosa	Silver Gazania	0.2	140mm	50	
HIB sca	Hibbertia scandens	Guinea Flower	0.15-0.25	Tube	31	
JUN con	Juniperus conferta	Japanese Shore Juniper	0.3	200mm	20	
LOM lon	Lomandra longifolia 'Tanika'	Spiky-headed Mat-rush	1	Tube	65	
LIR mus	Liriope muscari 'Evergreen Giant'	Giant Liriope	0.5	140mm	40	
SED 'GM'	Sedum 'Gold Mound'	Mexican Stonecrop	0.15	140mm	40	
TRA jas	Trachelospermum jasminoides	Star Jasmine	0.5	Tube	50	
VIO hed	Viola hederacea	Native Viola	0.2	Tube /Flat	145	
FIRST FLOOR PLANT SCHEDULE						
Abbreviation	Botanical Name	Common Name	Mature Height (m)	Pot Size	Qty	Comments
Trees						
HOW fos (2m)	Howea forsteriana	Kentia palm	8-6	2.0m cl st	7	3.0M clear stem. Sub surface tree anchor system
HOW fos (4m)	Howea forsteriana	Kentia palm	8-6	4.0m cl st	3	4.0M clear stem. Sub surface tree anchor system
Shrubs						
CLI min	Clivea miniata 'Shade Master'	Bush lily	0.5	200mm	20	
MIC fig	Michellia figo	Port Wine Magonolia	3	1	34	
RHA CW	Raphiolepis indica 'Cosmic White'	Indian Hawthorn	0.6	200mm	32	
Accents						
ALA imp	Alcantarea imperialis 'Ruby'	Imperial Bromiliad	1.5-3	400mm	7	
ART cir	Arthropodium cirratum	Ranga Lily	0.6	200mm	40	
LEU bro	Leucophyta brownii	Cusion Bush	1	140mm	8	
PHO ten	Phormium tenax	New Zealand Flax	1	140mm	11	
RHA exc	Rhapis excelsa	The Lady Palm	43923	300mm	8	
Ferns						
ASP aus	Asplenium australasicum	Birds Nest Fern	1-2	45L	9	
CYA coo	Cyathea cooperi	Australian Tree Fern	5-20	2-3 feet	8	
DOO asp	Doodia aspera	Pickly Rasp Fern	0.5	140mm	126	
Grasses & Groundcovers						
ACA 'CI'	Casaurina glouca 'Cousin It'	Cousin It	0.3	140mm	10	
ACA cog	Acacia cognata 'Limelight'	River wattle	0.5-1	Tube	20	
AJU rep CG	Ajuга reptans 'Catlin's Giant'	Carpet Bugle	0.3	140mm	186	
CAL ins	Calathea insignis	Rattlesnake Plant	0.4	200mm	52	
CAR app	Carex appressa	Tall Sage	0.5	140mm	2	
DIA cae	Dianella caerulea	Paroo Lily	0.5	Tube	100	
DIC rep	Dichondra repens	Kidney Weed	0.3	Tray	205	
GAR R	Gardenia augusta 'Redican'	Gardenia	0.5	200mm	120	
HOS sp.	Hosta species	Hosta	0.3	200mm	107	
OPH jap	Ophiopogon japonicus	Mondo Grass Green	0.3	140mm	205	
ROS P	Rosmarinus officinalis 'Prostratus'	Creeping Rosemary	0.3	140mm	50	
SED 'GM'	Sedum 'Gold Mound'	Mexican Stonecrop	0.15	140mm	24	
SCA aem	Scaevola aemula	Fairy Fan-flower	0.4-0.5	140mm	43	
TRA jas	Trachelospermum jasminoides	Star Jasmine	0.5	Tube	48	

E

SECOND FLOOR PLANT SCHEDULE						
Abbreviation	Botanical Name	Common Name	Mature Height (m)	Pot Size	Qty	Comments
Grasses & Groundcovers						
ACA 'CI'	Casaurina glouca 'Cousin It'	Cousin It	0.3	140mm	10	
CAR app	Carex appressa	Tall Sage	0.5	140mm	2	
ROS P	Rosmarinus officinalis 'Prostratus'	Creeping Rosemary	0.3	140mm	20	
THIRD FLOOR PLANT SCHEDULE						
Abbreviation	Botanical Name	Common Name	Mature Height (m)	Pot Size	Qty	Comments
Trees						
MET 'FF'	Metrosideros excelsa	NZ Christmas Tree	9-11	75L	74	Caliper 45mm. Sub surface tree anchor system
Shrubs						
RHA CW	Raphiolepis indica 'Cosmic White'	Indian Hawthorn	0.6	300mm	11	
RHA OP	Raphiolepis indica 'Oriental Pearl'	Indian Hawthorn	1	200mm	6	
ROS off	Rosmarinus officinalis	Rosemary	2-3	140mm	15	
SYZ AM	Syzygium australe 'Allyn Magic'	Lilly Pilly	2	300mm	45	
THY max	Thysanolaena maxima	Tiger grass	2	75L	19	
VIB odo	Viburnum odoratissimum	Sweet Viburnum	4	45L	1	Minimum 1.5m height
Accents						
DOR exc	Doryanthes excelsa	Gymea Lily	2	45L	9	
SAL leu	Salvia leucantha	Salvia Mexican Sage	1-1.5	140mm	25	
Grasses & Groundcovers						
ACA 'CI'	Casaurina glouca 'Cousin It'	Cousin It	0.3	140mm	10	
ACA cog	Acacia cognata 'Limelight'	River wattle	0.5-1	Tube	130	
BRA BD	Brachyscome multifida 'Break of Day'	Cut Leaf Daisy	0.5	140mm	6	
CAR app	Carex appressa	Tall Sage	0.5	140mm	42	
JUN con	Juniperus conferta	Japanese Shore Juniper	0.3	200mm	6	
ROS P	Rosmarinus officinalis 'Prostratus'	Creeping Rosemary	0.3	140mm	166	
SCA aem	Scaevola aemula	Fairy Fan-flower	0.4-0.5	140mm	165	
SED 'GM'	Sedum 'Gold Mound'	Mexican Stonecrop	0.15	140mm	116	



- D** REVISION TO DA (20/08/21)
- A** Planters layout adjustments
- B** Plant species and quantity adjustments

12/04/23	4.56 MODIFICATION 2	AD
07/07/22	4.56 MODIFICATION 1	AD
24/05/22	4.56 MODIFICATION 1	AD
09/06/22	FOR TENDER	AD
03/06/22	95% FOR INTERNAL REVIEW	AD
DATE	ISSUE	AMENDMENT
DRAWING TITLE	PLANTING PLAN - GROUND	

APPROVED FOR RELEASE
AILA #1420

DATE	DRAWN	CHECKED
12/04/23	AD	CG

PROJECT No.	DRAWING No.	ISSUE
NEO01	NEO01-CD-301	D

COPYRIGHT OF DESIGN SHOWN HERE IS RETAINED AND AUTHORITY FOR ANY REPRODUCTION, IF IN DOUBT ASK, FOLLOW WRITTEN DIMENSIONS ONLY. DO NOT SCALE OFF DRAWINGS. DO NOT KEEP SUPERSEDED DRAWINGS ON SITE.

Suite 13, L1 Pittwater Pl,
10 Park St Mona Vale, NSW 2103

Phone: 61 2 8411 2734
47/6 Jubilee Avenue, Warriewood, NSW Australia
www.symstudio.com

CLIENT	Neoscape 223 Liverpool Street Darlinghurst, NSW 2010
--------	--

PROJECT	THE BATHERS 4 Collaroy Street Collaroy, NSW
---------	---

LEGEND

- PROPERTY BOUNDARY
- BUILDING OUTLINE ABOVE
- BASEMENT OUTLINE

TREE RETENTION, REMOVAL AND PRUNING

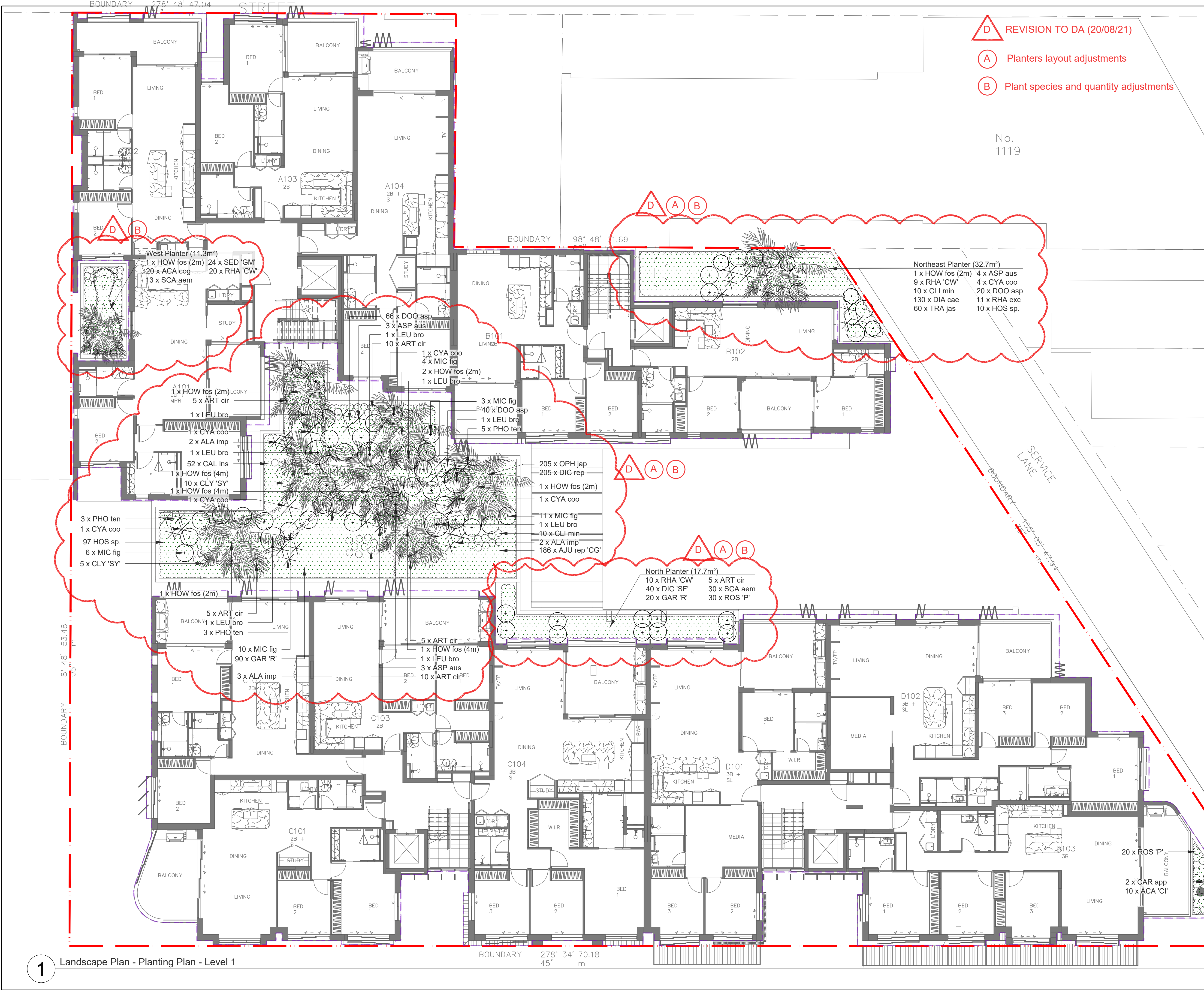
- EXISTING TREES - TO BE RETAINED & PROTECTED (as per AS4373 - 2007, AS4970 - 2009, and AS4907)
- EXISTING TREES - TO BE REMOVED (include grubbing out stumps to 300mm and remediation of soil where applicable) Approved DA for Removal

PLANTING

- PROPOSED TREES
- FEATURE SHRUBS & ACCENT PLANTS
- GRASSES / GROUND COVERS
- PLANTER POT

Scale 1:100 @ A1

1 Landscape Plan - Planting Plan - Ground



- D** REVISION TO DA (20/08/21)
- A** Planters layout adjustments
- B** Plant species and quantity adjustments

12/04/23	4.56 MODIFICATION 2	AD
21/07/22	4.56 MODIFICATION 1	AD
24/05/22	4.56 MODIFICATION 1	AD
09/06/22	FOR TENDER	AD
03/06/22	95% FOR INTERNAL REVIEW	AD
DATE	AMENDMENT	BY

PLANTING PLAN - LEVEL 1

APPROVED FOR RELEASE		
AILA #1420		
DATE	DRAWN	CHECKED
12/04/23	AD	CG
PROJECT No.	DRAWING No.	ISSUE
NEO01	NEO01-CD-302	D

COPYRIGHT OF DESIGN SHOWN HERE IS RETAINED AND AUTHORITY FOR ANY REPRODUCTION, IF IN DOUBT ASK, FOLLOW WRITTEN DIMENSIONS ONLY, DO NOT SCALE OFF DRAWINGS, DO NOT KEEP SUPERSEDED DRAWINGS ON SITE.



LANDSCAPE ARCHITECT
sym. studio
Phone: 61 2 8411 2734
47/6 Jubilee Avenue, Warriewood, NSW Australia
www.symstudio.com

CLIENT
neoscape
project solutions
www.neoscape.com.au

CLIENT
Neoscape
223 Liverpool Street
Darlinghurst, NSW 2010

PROJECT
THE BATHERS
4 Collaroy Street
Collaroy, NSW

- LEGEND
- PROPERTY BOUNDARY
 - BUILDING OUTLINE ABOVE
 - BASEMENT OUTLINE

- TREE RETENTION, REMOVAL AND PRUNING
- EXISTING TREES - TO BE RETAINED & PROTECTED (as per AS4373 - 2007, AS4970 - 2009, and AS4907)
 - EXISTING TREES - TO BE REMOVED (include grubbing out stumps to 300mm and remediation of soil where applicable) Approved DA for Removal

- PLANTING
- PROPOSED TREES
 - FEATURE SHRUBS & ACCENT PLANTS
 - GRASSES / GROUND COVERS
 - PLANTER POT



12/04/23	4.56 MODIFICATION 2	AD
24/06/22	4.56 MODIFICATION 1	AD
09/06/22	FOR TENDER	AD
03/06/22	95% FOR INTERNAL REVIEW	AD
DATE	ISSUE	BY

DRAWING TITLE

PLANTING PLAN - LEVEL 2

APPROVED FOR RELEASE

AILA #1420

DATE	DRAWN	CHECKED
12/04/23	AD	CG

PROJECT No.	DRAWING No.	ISSUE
NEO01	NEO01-CD-303	C

COPYRIGHT OF DESIGN SHOWN HERE IS RETAINED AND AUTHORITY FOR ANY REPRODUCTION, IF IN DOUBT ASK, FOLLOW WRITTEN DIMENSIONS ONLY. DO NOT SCALE OFF DRAWINGS. DO NOT KEEP SUPERSEDED DRAWINGS ON SITE.

GARTNERTROVATO
ARCHITECTS

Suite 13, L1 Pittwater Pl,
10 Park St Mona Vale, NSW 2103

LANDSCAPE ARCHITECT

sym. studio
Phone: 61 2 8411 2734
47/6 Jubilee Avenue, Warriewood, NSW Australia
www.symstudio.com

CLIENT

neoscape
project solutions
www.neoscape.com.au

Neoscape
223 Liverpool Street
Darlinghurst, NSW 2010

PROJECT

THE BATHERS
4 Collaroy Street
Collaroy, NSW

LEGEND

- PROPERTY BOUNDARY
- BUILDING OUTLINE ABOVE
- BASEMENT OUTLINE

TREE RETENTION, REMOVAL AND PRUNING

- EXISTING TREES - TO BE RETAINED & PROTECTED (as per AS4373 - 2007, AS4970 - 2009, and AS4907)
- EXISTING TREES - TO BE REMOVED (include grubbing out stumps to 300mm and remediation of soil where applicable) Approved DA for Removal

PLANTING

- PROPOSED TREES
- FEATURE SHRUBS & ACCENT PLANTS
- GRASSES / GROUND COVERS
- PLANTER POT

