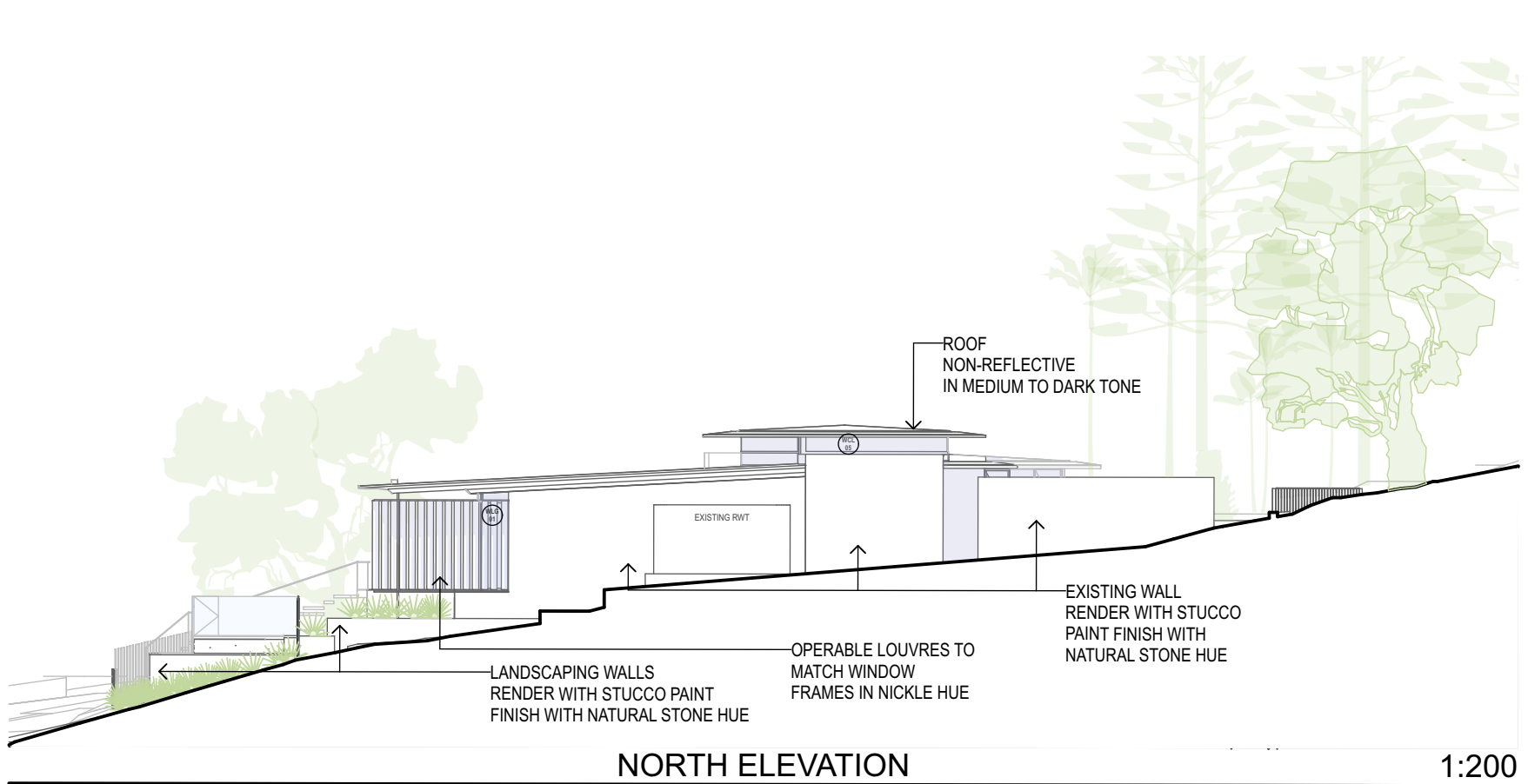


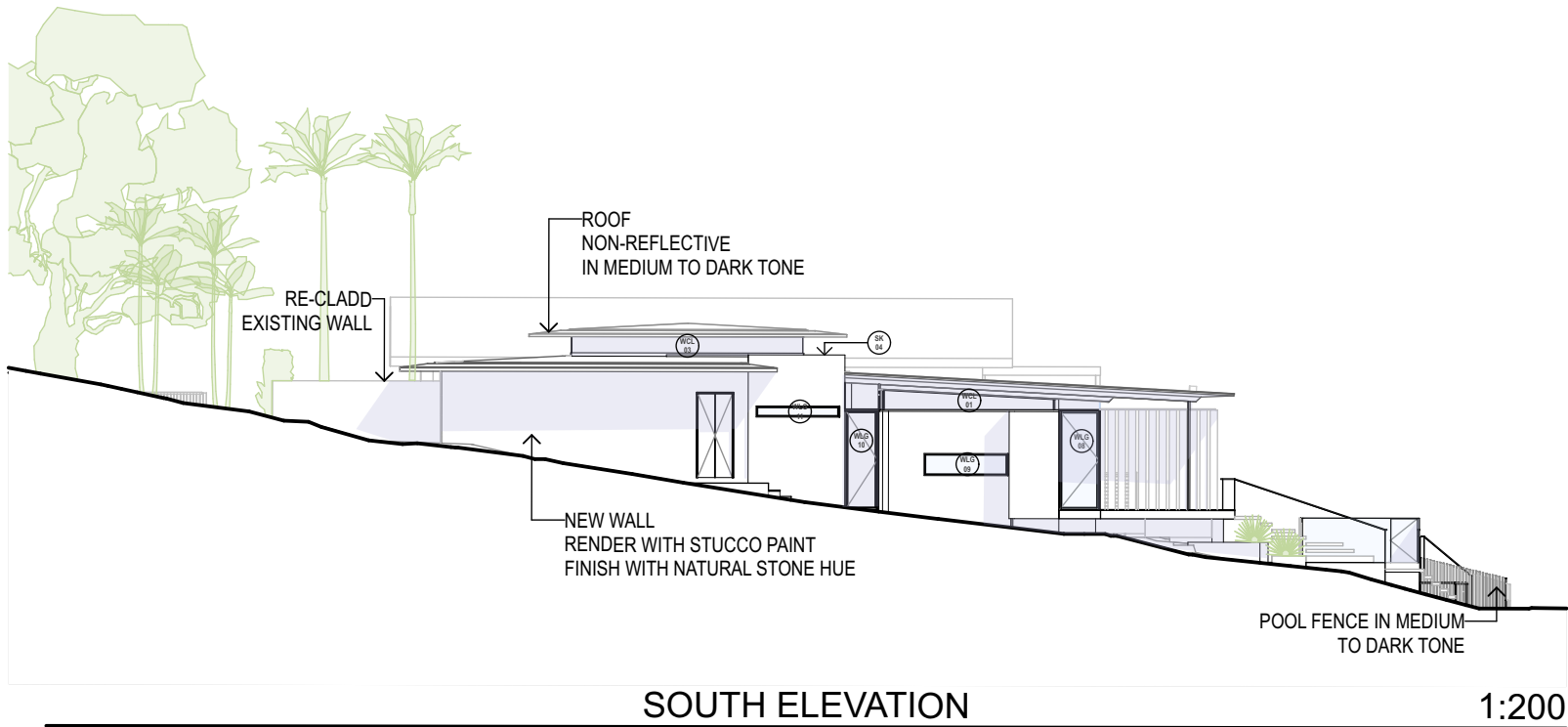
EAST ELEVATION

1:200



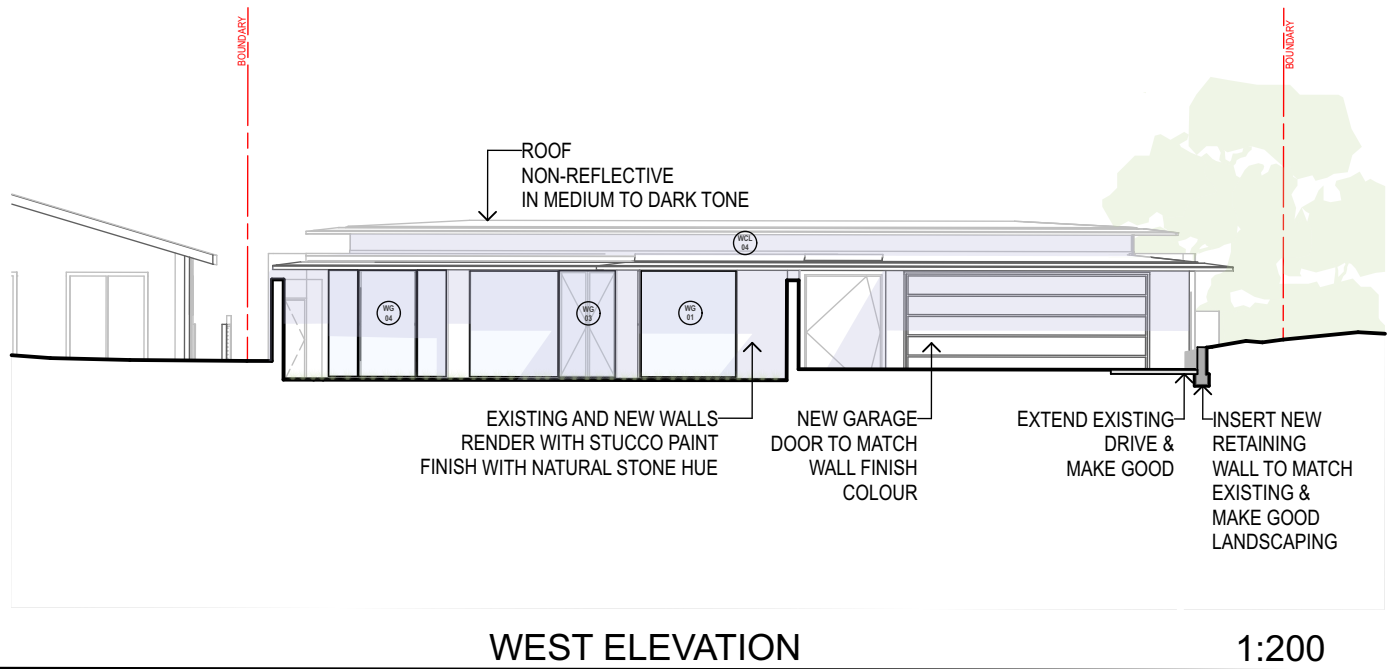
NORTH ELEVATION

1:200



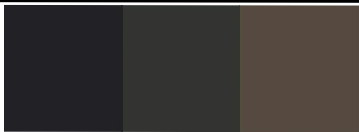
SOUTH ELEVATION

1:200

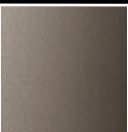


WEST ELEVATION

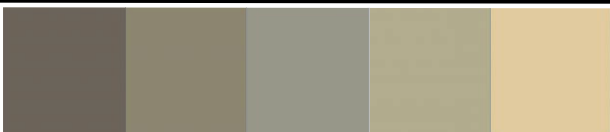
1:200



ROOF & POOL FENCING IN
MEDIUM TO DARK TONE



OPERABLE LOUVRES AND
WINDOW FRAMES IN
NICKLE COLOUR TONE



EXTERNAL RENDER WITH
STUCCO FINISH IN
NATURAL STONE COLOUR

JORGE HRDINA
ARCHITECTS PTY LTD

PALM BEACH STUDIO, PO BOX 561, NSW 2107 AUSTRALIA
[P] +61 2 9929 9490 [E] studio@jorgehrdina.com.au ACN 091 485 237 ABN 89 091 485 237
NOMINATED ARCHITECT - JORGE HRDINA NSW REGISTRATION NO. 6014

NOTE: CHECK ALL DIMENSIONS ON SITE BEFORE COMMENCING WITH THE WORK SHOWN ON THIS DRAWING. WORK TO FIGURED DIMENSIONS ONLY. DO NOT SCALE DRAWINGS. REPORT ANY DISCREPANCIES TO THE ARCHITECT FOR A DECISION BEFORE PROCEEDING WITH WORK.

THIS DRAWING IS COPYRIGHT AND IS THE PROPERTY OF JORGE HRDINA ARCHITECTS PTY LTD AND MUST NOT BE USED WITHOUT AUTHORISATION.

PROJECT TITLE
QUASARA

PROJECT ADDRESS
325 WHALE BEACH ROAD PALM BEACH NSW 2108
AUSTRALIA
LOTS 242 & 241 , DP 16362

BASIX CERT. No. A1794194

PROJECT NO
2501

DRAWING TITLE
FINISHES AND MATERIALS

REV	DESCRIPTION	DATE

ON ORIGINAL @ A3

SCALE
1:200, 1:50 @ A4

DRAWING NO

5001

STATUS

DATE

DRAWN

JW

CHECKED

JH

REVISION