

notes

To be read in conjunction with hydraulic engineer drawings.

Legend

- Roof:
 rs corrugated copper sheeting, cappings, etc
 g copper gutters
 dp round copper down pipes
- Softt:
 fc set fibre cement
 sl plywood soffit lining
- Solar Panels:
 Type A: Solar hot water panels with remote storage
 Type B: Photovoltaic cells
- Walls:
 External:
 fer(c) Fine cement render to concrete.
 (Colour: Porters "mineral" or similar)
 s Coursed sandstone
- Internal:
 rm Rendered masonry
 tm Tiles on masonry
- Floors:
 st Stone tiling
 sp Stone paving
 hd Hardwood decking
- Ceilings:
 pb Set plaster board
- Windows:
 stw Sliding timber windows
 fg fixed glass
- Doors:
 std Sliding timber framed doors
 gd panel lift garage door
- LOUVRES/SCREENS:
 htss Hardwood timber slatted screen
 fmi Fixed metal louvres



| Item | Description | Quantity | Unit |
|------|--|----------|------|
| 1 | Roof | 1 | sqm |
| 2 | Roof colour | 1 | sqm |
| 3 | External carpentry walls | 1 | sqm |
| 4 | External wall colour | 1 | sqm |
| 5 | Timber Windows System with 2 air vents | 1 | sqm |
| 6 | Weatherstripping to doors and windows | 1 | sqm |

OCT 09 A DEVELOPMENT APP.

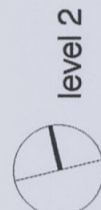
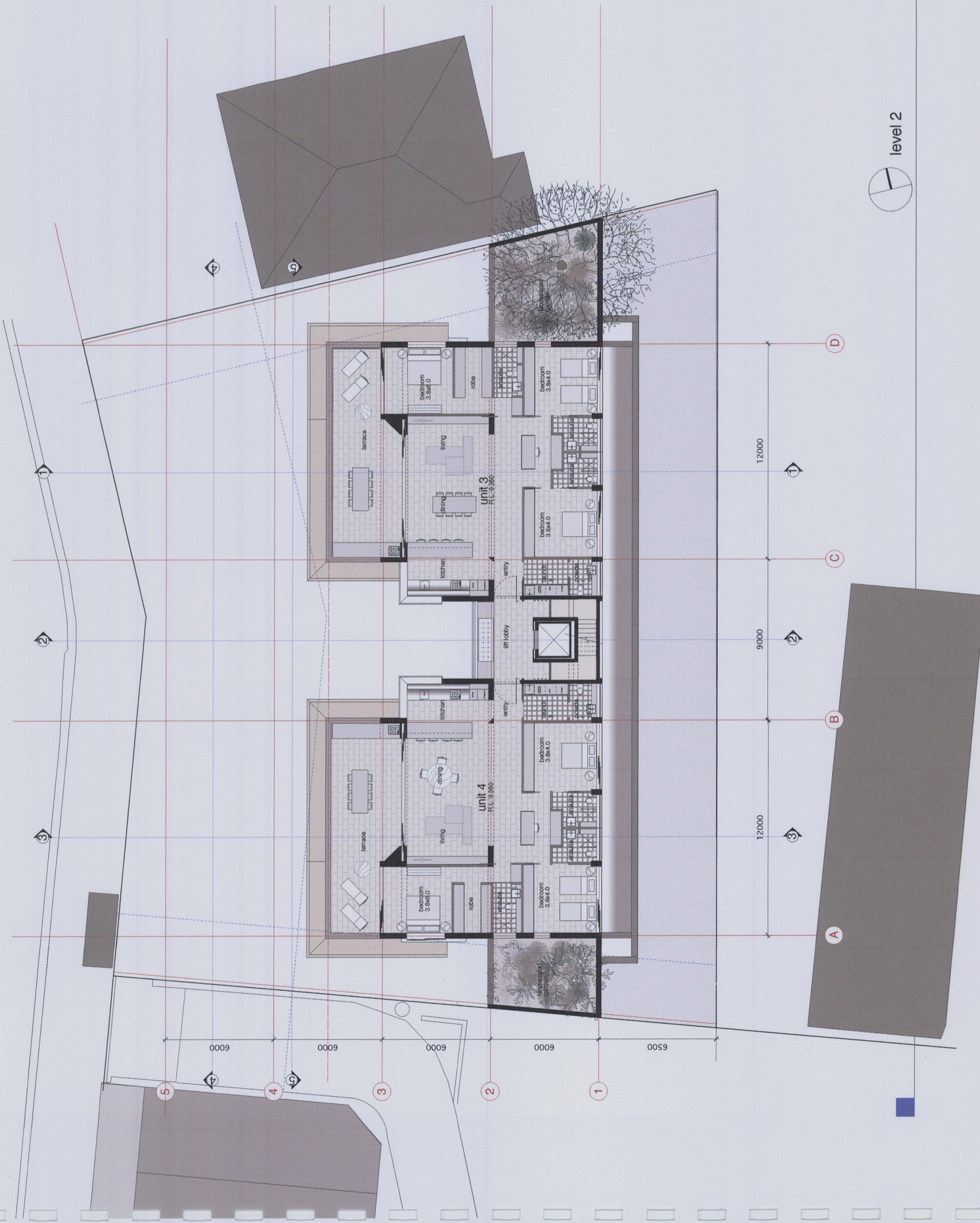
date issue

amendments

drawing : level 2 floor plan
 dwg. no. : DA 07
 scale : 1:100@A1 / 1:200@A3
 date : OCT 09
 drawn :
 checked :

1112-1118 Barrenjoey Road
 Palm Beach

LESJUK ARCHITECTS PTY LTD
 the studio, 1118 barrenjoey road palm beach nsw
 po box 30 palm beach nsw 2108
 telephone: 02 9374 5502
 email: lesjukarchitects@bigpond.com



level 2