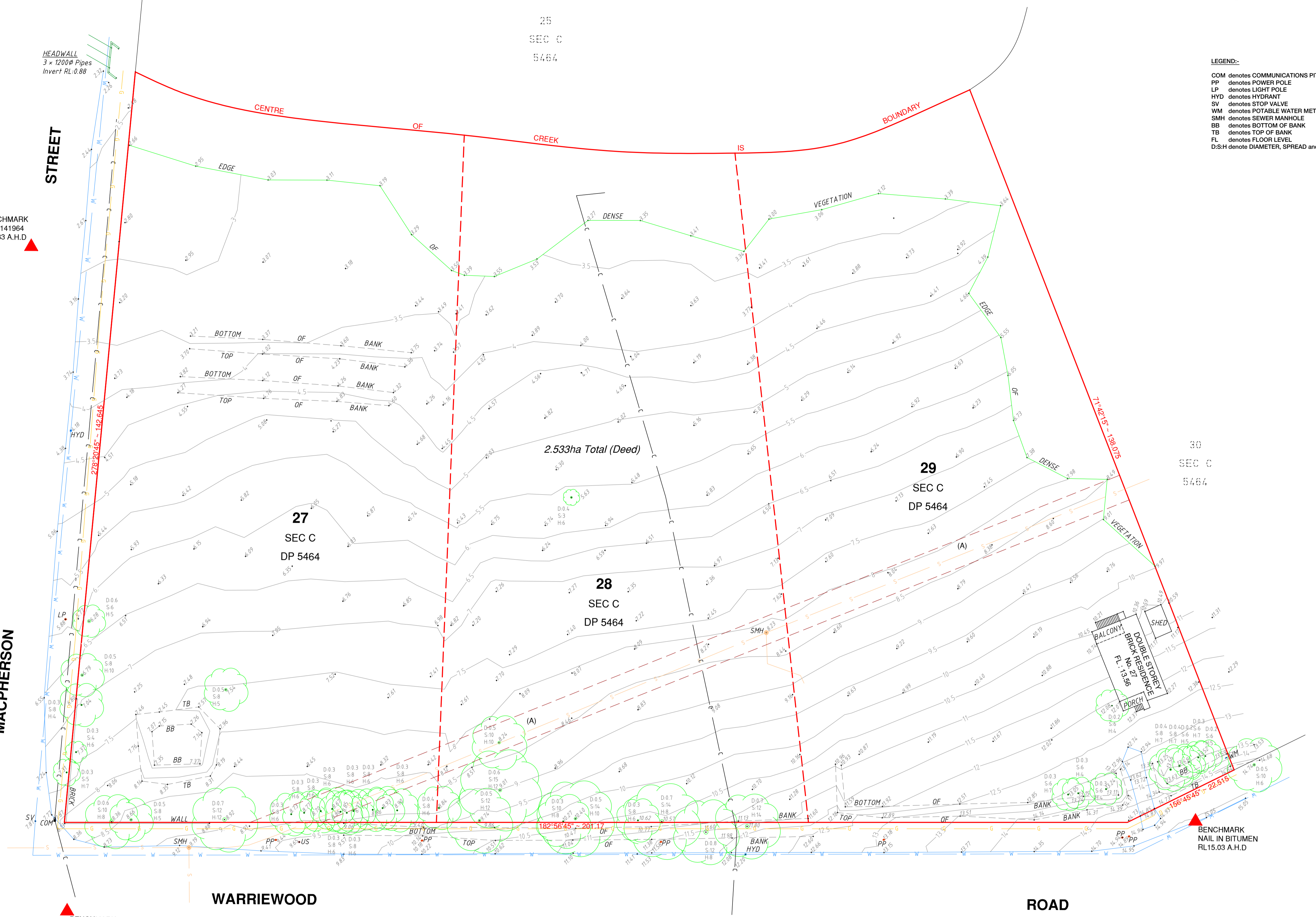


- GENERAL NOTES:-**
- THIS SURVEY IS NOT A 'LAND SURVEY' AS DEFINED BY THE SURVEYING AND SPATIAL INFORMATION ACT, 2002.
  - THE BOUNDARIES OF THE LAND HAVE NOT BEEN SURVEYED. THE RELATIONSHIP BETWEEN THE BOUNDARIES SHOWN AND FEATURES SURVEYED ARE APPROXIMATE AND SUITABLE FOR PLOTTING PURPOSES ONLY.
  - ONLY THOSE SERVICES VISIBLE AT THE TIME OF SURVEY HAVE BEEN LOCATED AND ARE QUALITY LEVEL A AS DEFINED BY AS 5488-2013.
  - UNDERGROUND SERVICES HAVE BEEN PLOTTED FROM 'DIAL-BEFORE-YOU-DIG' PLANS AND ARE QUALITY LEVEL D AS DEFINED BY AS 5488-2013. ALL RELEVANT AUTHORITIES MUST BE CONTACTED TO DETERMINE THE FULL EXTENT OF SERVICES PRIOR TO ANY PLANNING OR WORKS NEAR THE SITE.
  - ONLY TREES GREATER THAN 3.5 METRES IN HEIGHT ARE SHOWN ON THIS PLAN AND THEIR POSITIONS AREA DIAGRAMMATIC ONLY AND MAY REQUIRE ADDITIONAL SURVEY WHERE CRITICAL TO DESIGN.
  - CONTOURS ARE INDICATIVE AT GROUND FORM ONLY. SPOT LEVELS ONLY SHOULD BE USED FOR CALCULATIONS OF QUANTITIES WITH CAUTION.
  - CONTOUR INTERVAL 0.5 m.
  - ALL SETOUT LEVELS MUST BE REFERRED TO THE BENCH MARK.
  - THE ORIENTATION OF THIS PLAN IS MGA NORTH AS DETERMINED FROM DP 1182826.
  - THE LAND IS AFFECTED BY:  
EASEMENT FOR SEWERAGE 5 WIDE (DP 581495) SHOWN 'A'.

BENCHMARK  
SSM 141964  
RL2.83 A.H.D.

MACPHERSON



- LEGEND:-**
- COM denotes COMMUNICATIONS PIT
  - PP denotes POWER POLE
  - LP denotes LIGHT POLE
  - HYD denotes HYDRANT
  - SV denotes STOP VALVE
  - WM denotes POTABLE WATER METER
  - SMH denotes SEWER MANHOLE
  - BS denotes BOTTOM OF BANK
  - TB denotes TOP OF BANK
  - FL denotes FLOOR LEVEL
  - D:S:H denote DIAMETER, SPREAD and HEIGHT OF TREE

**UNDERGROUND SERVICES LEGEND - QUALITY LEVEL D (AS 5488-2013)**

W	POTABLE WATER MAIN
D	STORMWATER PIPE
S	SEWER MAIN
C	COMMUNICATIONS CABLES
G	GAS MAIN

APPROXIMATE POSITION ONLY VIDE 'DIAL-BEFORE-YOU-DIG' PLANS JOB No. 10043044. WHERE CRITICAL TO DESIGN, UNDERGROUND SERVICES SHOULD BE LOCATED BY MORE ACCURATE METHODS.

CAUTION: FIBRE OPTIC CABLES ARE PRESENT IN THIS AREA

- SERVICES NOTES:-**
- ONLY THOSE SERVICES VISIBLE AT THE TIME OF SURVEY HAVE BEEN LOCATED AND IF SHOWN AS '+' ARE QUALITY LEVEL A AS DEFINED BY AS 5488-2013. LEVELS SHOWN ARE SURFACE LEVELS UNLESS NOTED OTHERWISE.
  - UNDERGROUND SERVICES HAVE BEEN PLOTTED FROM 'DIAL-BEFORE-YOU-DIG' PLANS AND ARE QUALITY LEVEL D AS DEFINED BY AS 5488-2013. ALL RELEVANT AUTHORITIES MUST BE CONTACTED TO DETERMINE THE FULL EXTENT OF SERVICES PRIOR TO ANY PLANNING OR WORKS NEAR THE SITE.

ISSUE	DATE	AMENDMENT
A	28/01/16	ORIGINAL ISSUE

CLIENT:  
**J & G KNOWLES & ASSOCIATES PTY LTD**

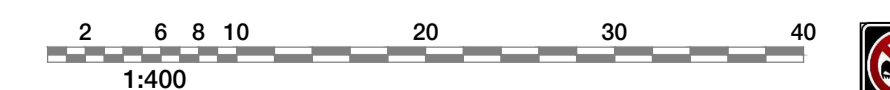
SCALE 1:400  
ORIGIN OF LEVELS:  
SSM 24644  
RL 8.754

DATUM:  
A.H.D.

REF.: 6952  
DATE: 28/01/2016  
SURV/CHK: DG/GE

PLAN A1  
ISSUE A

DETAIL AND LEVEL SURVEY OF LOTS 27-29 SEC C IN DP5464  
23-27 WARRIEWOOD ROAD  
WARRIEWOOD



**SDG**  
LAND DEVELOPMENT SOLUTIONS  
Suite 1, 3 Railway Street  
BAULKHAM HILLS 2153  
P.O. Box 2052  
NORTH Parramatta 1750  
T: (02) 9600 7950  
e: office@sdg.net.au  
w: www.sdg.net.au

