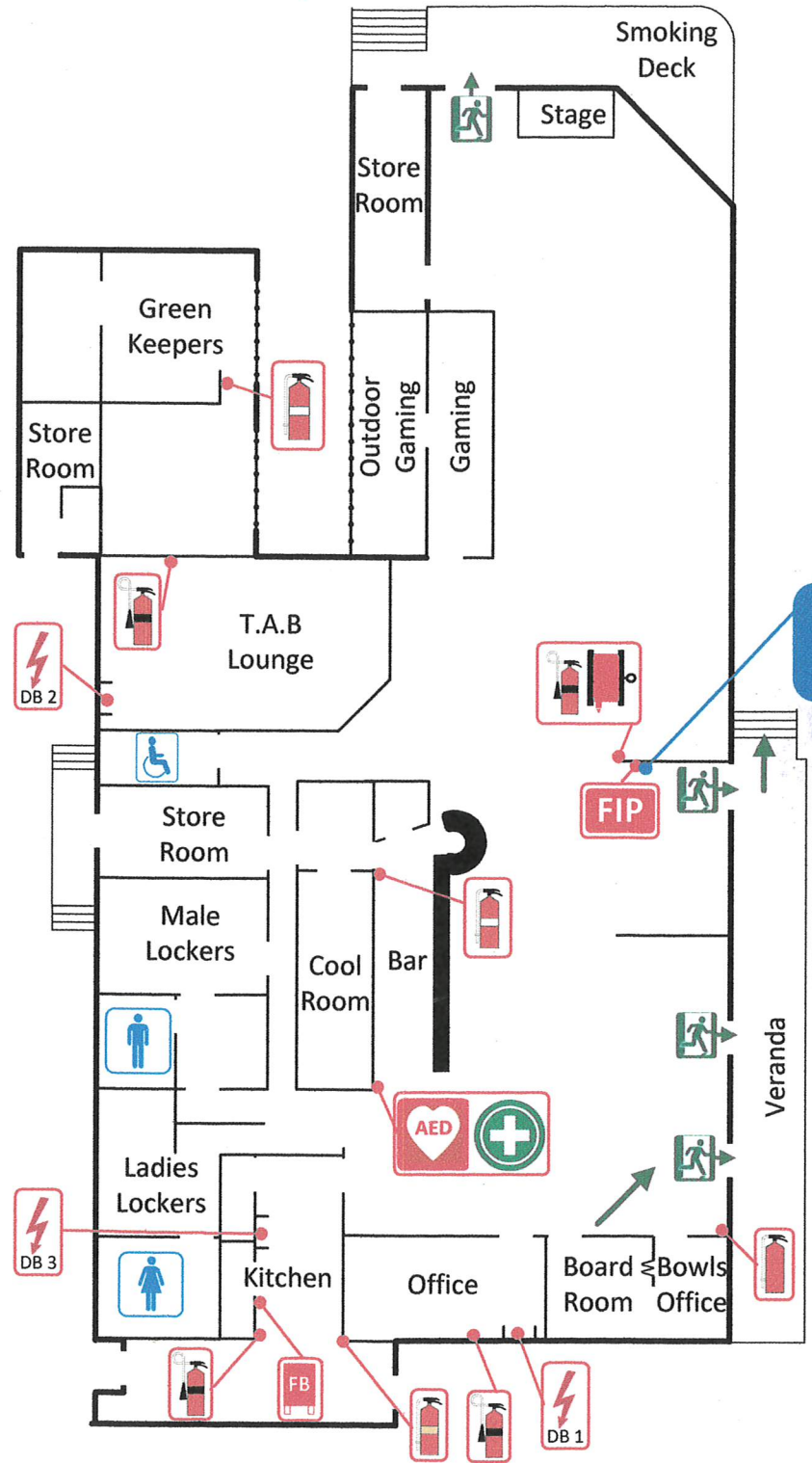


EVACUATION DIAGRAM

HARBORD BOWLING CLUB
 Bennett Street | CURL CURL NSW 2096

Ground Floor



SafeGuard (02) 9683 4700

000 EMERGENCY

106 TEXT EMERGENCY CALL

EMERGENCY RESPONSE

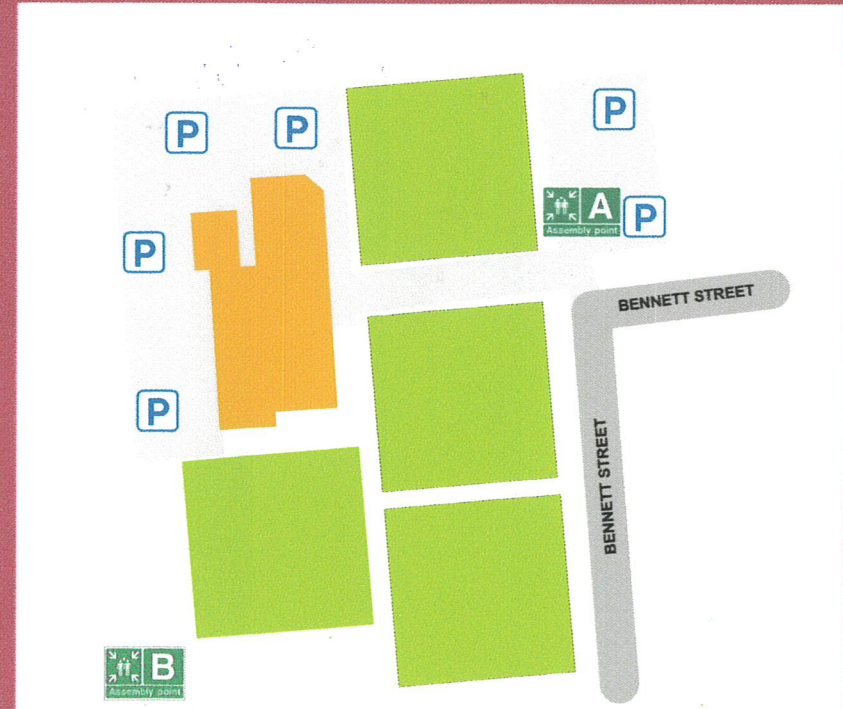
- RESCUE**
Rescue any people in danger (Only if safe to do so).
- ALARM**
Raise the Alarm
- CONTAIN**
If Practicable, close all doors and windows to contain the fire (Only if safe to do so).
- EXTINGUISH**
Try to extinguish the fire using appropriate equipment only if you are trained and it is safe to do so.

USING FIRE EXTINGUISHERS

- P**ull Pin: – at top of extinguisher. Test to see if operable.
- A**im: – aim the nozzle towards the base of fire.
- S**queeze: – squeeze the handles to discharge the agent.
- S**weep: – sweep the nozzle back and forth aiming at the base of the flames.

NB: DO NOT USE WATER ON ELECTRICAL FIRE

ASSEMBLY POINT



LEGEND

CO ₂ Extinguisher	Powder Extinguisher	Wet Chemical Extinguisher	Water Extinguisher	Fire Blanket	Fire Hose Reel	Egress Route	Emergency Exit	First Aid Kit	AED Defibrillator	Power Switchboard	Assembly Area	Fire Indicator Panel

Issue Date: 10.03.2019
 Valid to: 10.03.2024
 GF 1 of 6

Issue One July 2014
 Issue Two

Not to scale