

notes

To be read in conjunction with hydraulic engineer drawings.

Legend

- Roof:**
 rs corrugated copper sheeting, cappings, etc
 g copper gutters
 dp round copper down pipes
- Soffit:**
 fc set fibre cement
 sl plywood soffit lining
- Solar Panels:**
 ta Solar hot water panels with remote storage to Photovoltaic cells
- Walls:**
 External:
 fer(c) Fine cement render to concrete, (Colour: Porters "mineral" or similar)
 s Coursed sandstone
- Internal:**
 rm Rendered masonry
 tm Tiles on masonry
- Floors:**
 st Stone tiling
 sp Stone paving
 hd Hardwood decking
- Ceilings:**
 pb Set plaster board
- Windows:**
 stw Sliding timber windows
 fg fixed glass
- Doors:**
 std Sliding timber framed doors
 gd panel lift garage door
- Louvers/Screens:**
 hss Hardwood timber slatted screen
 fml Fixed metal louvers



Thermal Specifications	R1.5 eucalyptus
Roof colour	Black SA-24.019 < 0.70
External cavity brick walls	R1.5 masonry
External wall colour	Unit SA > 0.70
Total Watercolour System value to all windows	Uw 0.60 SHGC=0.74
Weatherstripping to doors and windows	Yes

OCT 09 A DEVELOPMENT APP.

date issue

amendments

drawing : ground floor plan

dwg. no. : DA 05

scale : 1:100@A1 / 1:200@A3

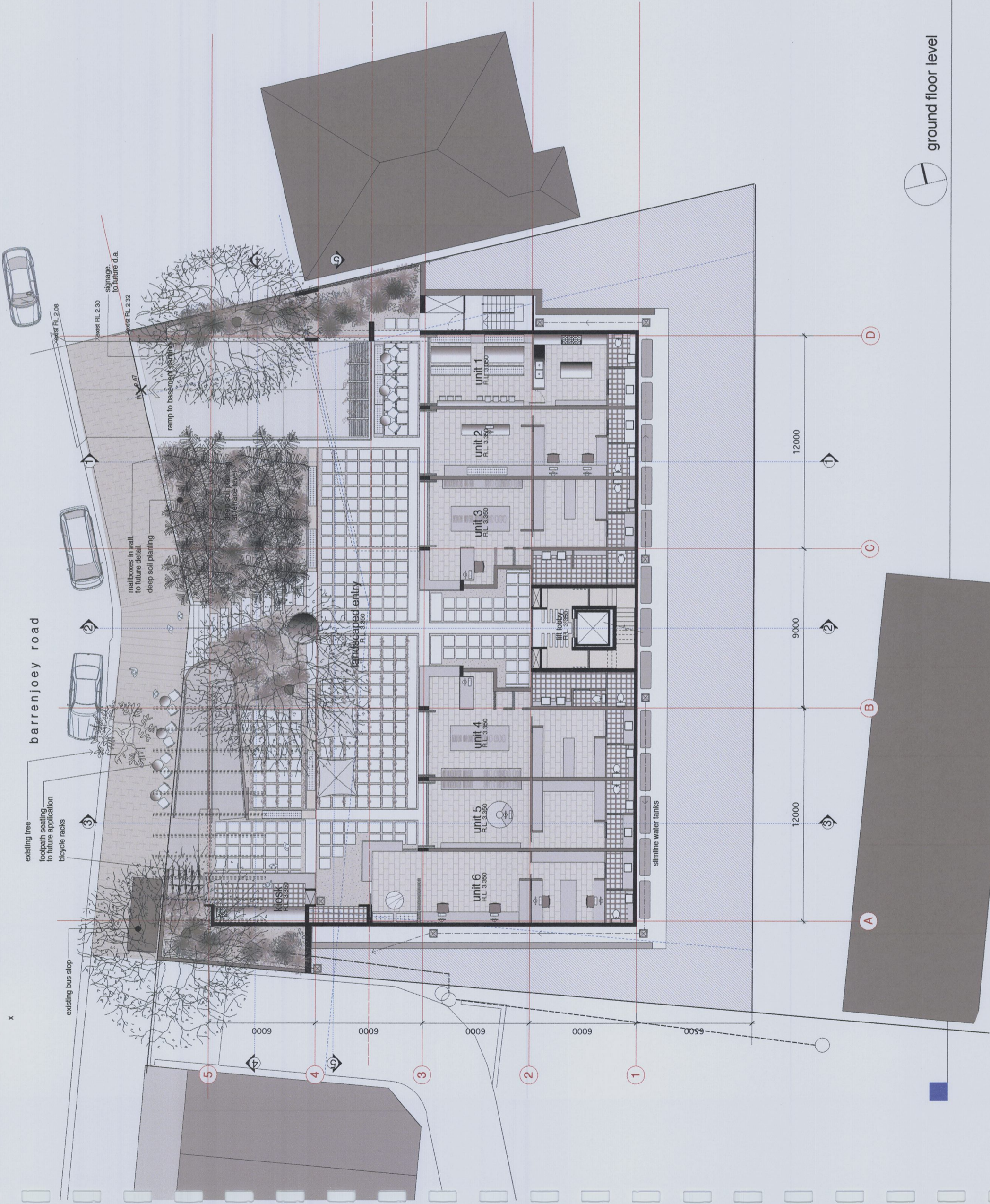
date : OCT 09

drawn :

checked :

1112-1118 Barrenjoey Road
 Palm Beach

LESJUK ARCHITECTS PTY LTD
 the studio, 1118 Barrenjoey road palm beach nsw
 po box 30 palm beach nsw 2108
 telephone 612 9974 1010 fax/mobile 612 9974 5502
 email lesjuka@lesjuka.com.au



ground floor level