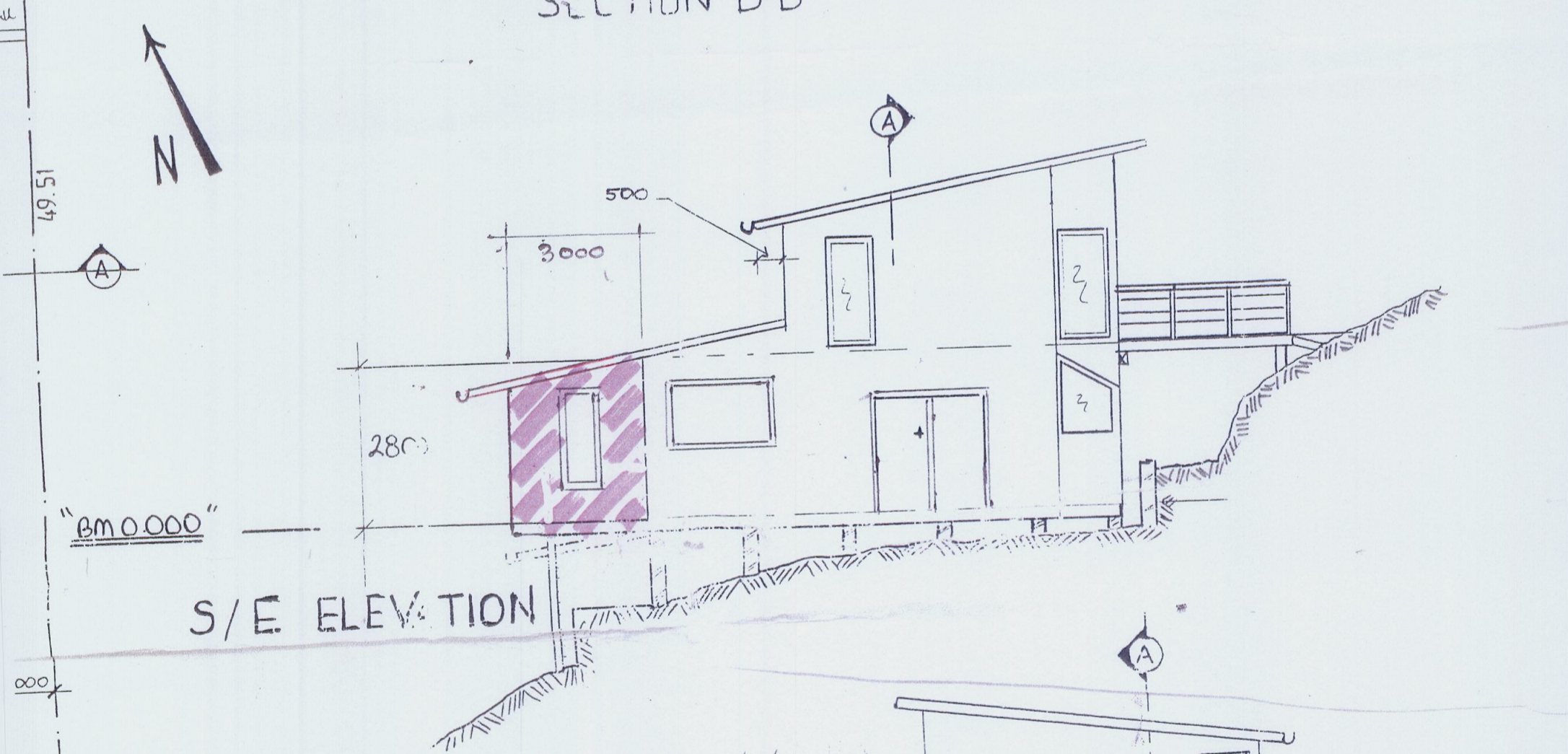
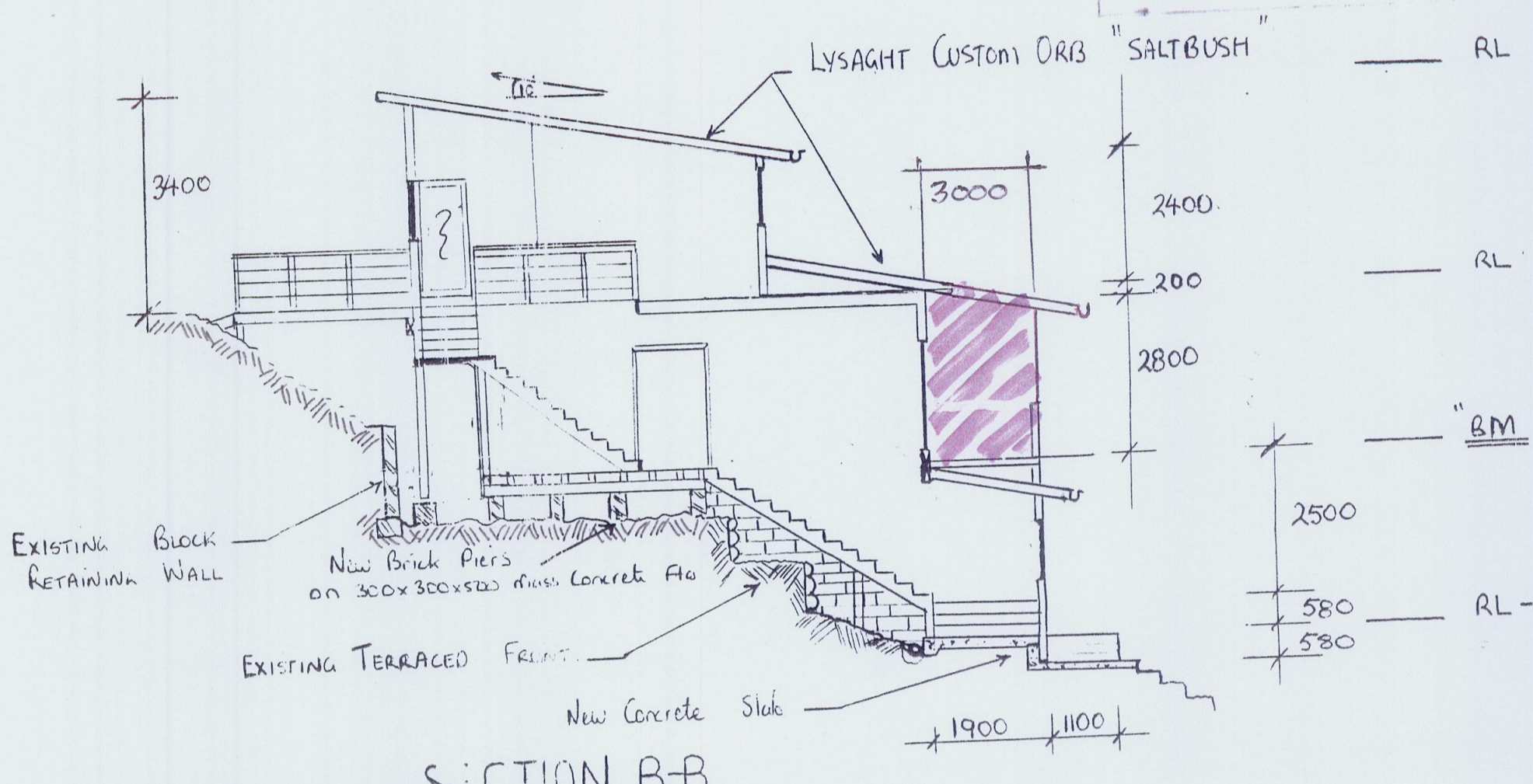


ATTENTION

BUILDING APPROVAL NO: ...

CONDITIONS APPLY TO THIS APPLICATION. PLEASE READ THEM CAREFULLY BEFORE YOU COMMENT AS THEY MAY AFFECT YOUR BUILDING PROPOSAL. EXTRA COPIES OF CONDITIONS MAY BE OBTAINED FROM PITTWA COUNCIL ON REQUEST.



100 thick Wall to be lined externally with Cypress cladding internally with Plasterboard

