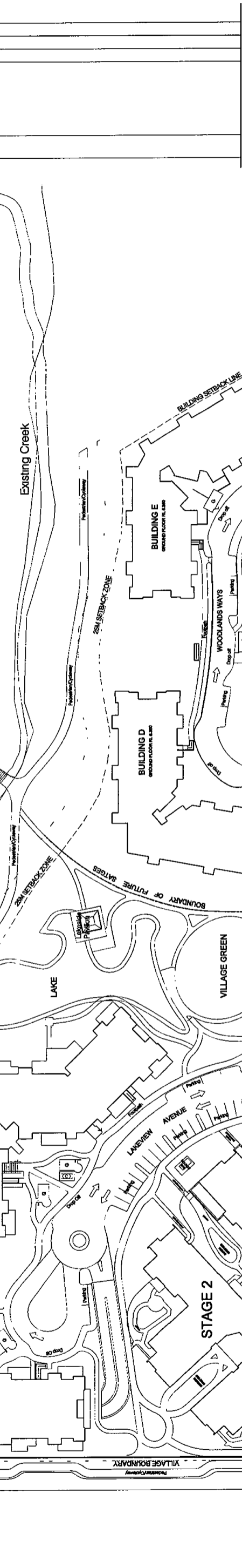
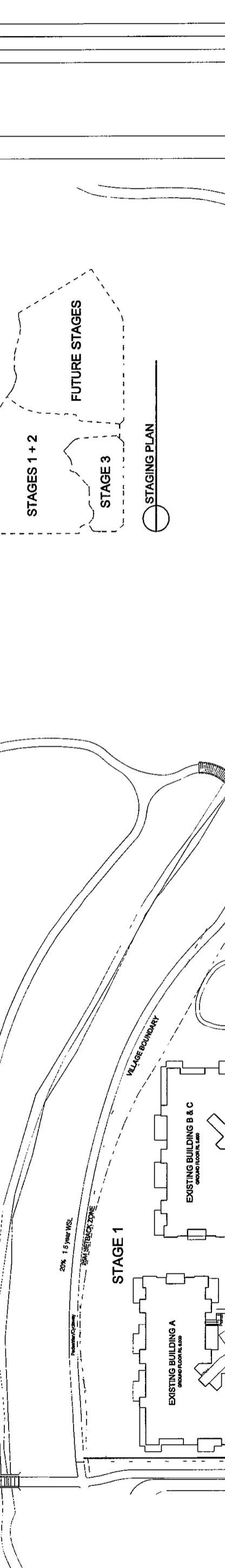


© Copyright of the drawings herein is the property of the Architect. No part of these drawings may be reproduced, stored in a retrieval system, or transmitted in any form or by any means, electronic, mechanical, photocopying, recording, or by any information storage and retrieval system, without the prior written consent of the Architect. The Architect shall not be responsible for any errors or omissions in these drawings. The Architect shall not be responsible for any construction methods or materials shown in these drawings. The Architect shall not be responsible for any construction methods or materials shown in these drawings. The Architect shall not be responsible for any construction methods or materials shown in these drawings.

NO.	DATE	DESCRIPTION	BY	SCALE	STATUS
1	10/15/10	PRELIMINARY	MM	1/8" = 1'	PRELIMINARY
2	11/15/10	REVISED	MM	1/8" = 1'	REVISED
3	12/15/10	REVISED	MM	1/8" = 1'	REVISED
4	01/15/11	REVISED	MM	1/8" = 1'	REVISED
5	02/15/11	REVISED	MM	1/8" = 1'	REVISED
6	03/15/11	REVISED	MM	1/8" = 1'	REVISED
7	04/15/11	REVISED	MM	1/8" = 1'	REVISED
8	05/15/11	REVISED	MM	1/8" = 1'	REVISED
9	06/15/11	REVISED	MM	1/8" = 1'	REVISED
10	07/15/11	REVISED	MM	1/8" = 1'	REVISED
11	08/15/11	REVISED	MM	1/8" = 1'	REVISED
12	09/15/11	REVISED	MM	1/8" = 1'	REVISED
13	10/15/11	REVISED	MM	1/8" = 1'	REVISED
14	11/15/11	REVISED	MM	1/8" = 1'	REVISED
15	12/15/11	REVISED	MM	1/8" = 1'	REVISED
16	01/15/12	REVISED	MM	1/8" = 1'	REVISED
17	02/15/12	REVISED	MM	1/8" = 1'	REVISED
18	03/15/12	REVISED	MM	1/8" = 1'	REVISED
19	04/15/12	REVISED	MM	1/8" = 1'	REVISED
20	05/15/12	REVISED	MM	1/8" = 1'	REVISED
21	06/15/12	REVISED	MM	1/8" = 1'	REVISED
22	07/15/12	REVISED	MM	1/8" = 1'	REVISED
23	08/15/12	REVISED	MM	1/8" = 1'	REVISED
24	09/15/12	REVISED	MM	1/8" = 1'	REVISED
25	10/15/12	REVISED	MM	1/8" = 1'	REVISED
26	11/15/12	REVISED	MM	1/8" = 1'	REVISED
27	12/15/12	REVISED	MM	1/8" = 1'	REVISED
28	01/15/13	REVISED	MM	1/8" = 1'	REVISED
29	02/15/13	REVISED	MM	1/8" = 1'	REVISED
30	03/15/13	REVISED	MM	1/8" = 1'	REVISED
31	04/15/13	REVISED	MM	1/8" = 1'	REVISED
32	05/15/13	REVISED	MM	1/8" = 1'	REVISED
33	06/15/13	REVISED	MM	1/8" = 1'	REVISED
34	07/15/13	REVISED	MM	1/8" = 1'	REVISED
35	08/15/13	REVISED	MM	1/8" = 1'	REVISED
36	09/15/13	REVISED	MM	1/8" = 1'	REVISED
37	10/15/13	REVISED	MM	1/8" = 1'	REVISED
38	11/15/13	REVISED	MM	1/8" = 1'	REVISED
39	12/15/13	REVISED	MM	1/8" = 1'	REVISED
40	01/15/14	REVISED	MM	1/8" = 1'	REVISED
41	02/15/14	REVISED	MM	1/8" = 1'	REVISED
42	03/15/14	REVISED	MM	1/8" = 1'	REVISED
43	04/15/14	REVISED	MM	1/8" = 1'	REVISED
44	05/15/14	REVISED	MM	1/8" = 1'	REVISED
45	06/15/14	REVISED	MM	1/8" = 1'	REVISED
46	07/15/14	REVISED	MM	1/8" = 1'	REVISED
47	08/15/14	REVISED	MM	1/8" = 1'	REVISED
48	09/15/14	REVISED	MM	1/8" = 1'	REVISED
49	10/15/14	REVISED	MM	1/8" = 1'	REVISED
50	11/15/14	REVISED	MM	1/8" = 1'	REVISED
51	12/15/14	REVISED	MM	1/8" = 1'	REVISED
52	01/15/15	REVISED	MM	1/8" = 1'	REVISED
53	02/15/15	REVISED	MM	1/8" = 1'	REVISED
54	03/15/15	REVISED	MM	1/8" = 1'	REVISED
55	04/15/15	REVISED	MM	1/8" = 1'	REVISED
56	05/15/15	REVISED	MM	1/8" = 1'	REVISED
57	06/15/15	REVISED	MM	1/8" = 1'	REVISED
58	07/15/15	REVISED	MM	1/8" = 1'	REVISED
59	08/15/15	REVISED	MM	1/8" = 1'	REVISED
60	09/15/15	REVISED	MM	1/8" = 1'	REVISED
61	10/15/15	REVISED	MM	1/8" = 1'	REVISED
62	11/15/15	REVISED	MM	1/8" = 1'	REVISED
63	12/15/15	REVISED	MM	1/8" = 1'	REVISED
64	01/15/16	REVISED	MM	1/8" = 1'	REVISED
65	02/15/16	REVISED	MM	1/8" = 1'	REVISED
66	03/15/16	REVISED	MM	1/8" = 1'	REVISED
67	04/15/16	REVISED	MM	1/8" = 1'	REVISED
68	05/15/16	REVISED	MM	1/8" = 1'	REVISED
69	06/15/16	REVISED	MM	1/8" = 1'	REVISED
70	07/15/16	REVISED	MM	1/8" = 1'	REVISED
71	08/15/16	REVISED	MM	1/8" = 1'	REVISED
72	09/15/16	REVISED	MM	1/8" = 1'	REVISED
73	10/15/16	REVISED	MM	1/8" = 1'	REVISED
74	11/15/16	REVISED	MM	1/8" = 1'	REVISED
75	12/15/16	REVISED	MM	1/8" = 1'	REVISED
76	01/15/17	REVISED	MM	1/8" = 1'	REVISED
77	02/15/17	REVISED	MM	1/8" = 1'	REVISED
78	03/15/17	REVISED	MM	1/8" = 1'	REVISED
79	04/15/17	REVISED	MM	1/8" = 1'	REVISED
80	05/15/17	REVISED	MM	1/8" = 1'	REVISED
81	06/15/17	REVISED	MM	1/8" = 1'	REVISED
82	07/15/17	REVISED	MM	1/8" = 1'	REVISED
83	08/15/17	REVISED	MM	1/8" = 1'	REVISED
84	09/15/17	REVISED	MM	1/8" = 1'	REVISED
85	10/15/17	REVISED	MM	1/8" = 1'	REVISED
86	11/15/17	REVISED	MM	1/8" = 1'	REVISED
87	12/15/17	REVISED	MM	1/8" = 1'	REVISED
88	01/15/18	REVISED	MM	1/8" = 1'	REVISED
89	02/15/18	REVISED	MM	1/8" = 1'	REVISED
90	03/15/18	REVISED	MM	1/8" = 1'	REVISED
91	04/15/18	REVISED	MM	1/8" = 1'	REVISED
92	05/15/18	REVISED	MM	1/8" = 1'	REVISED
93	06/15/18	REVISED	MM	1/8" = 1'	REVISED
94	07/15/18	REVISED	MM	1/8" = 1'	REVISED
95	08/15/18	REVISED	MM	1/8" = 1'	REVISED
96	09/15/18	REVISED	MM	1/8" = 1'	REVISED
97	10/15/18	REVISED	MM	1/8" = 1'	REVISED
98	11/15/18	REVISED	MM	1/8" = 1'	REVISED
99	12/15/18	REVISED	MM	1/8" = 1'	REVISED
100	01/15/19	REVISED	MM	1/8" = 1'	REVISED

DATE: 10/15/10  
 DRAWN BY: MM  
 CHECKED BY: MM  
 PROJECT: WARRIEWOOD BROOK RETIREMENT VILLAGE  
 SHEET NO.: 3-0100

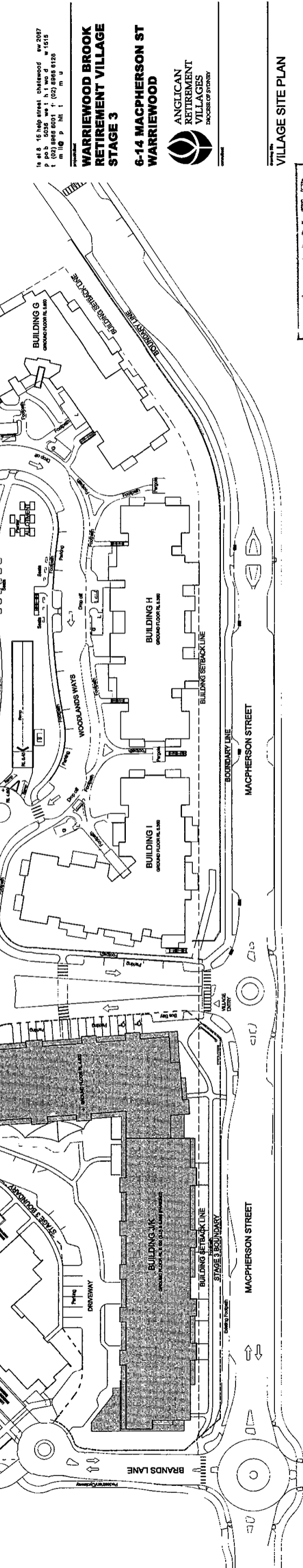


16 of 16 15 HIND STREET, CHATELAIN NSW 2007  
 P 61 955 5038 W 61 955 5039  
 F (02) 999 8001 T (02) 999 8126  
 M 04 9 111 1 m u

**WARRIEWOOD BROOK  
 RETIREMENT VILLAGE  
 STAGE 3**

**6-14 MACPHERSON ST  
 WARRIEWOOD**

**ANGLICAN  
 RETIREMENT  
 VILLAGES**  
 Diocese of Sydney



**VILLAGE SITE PLAN**

**ISSUE**

**- 3 NOV 2010**

**3-0100**

**6105-01**

**1:500**

**1500**

**6105-01**

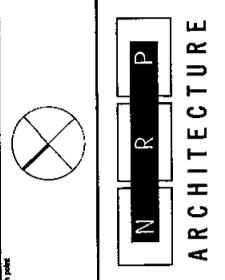
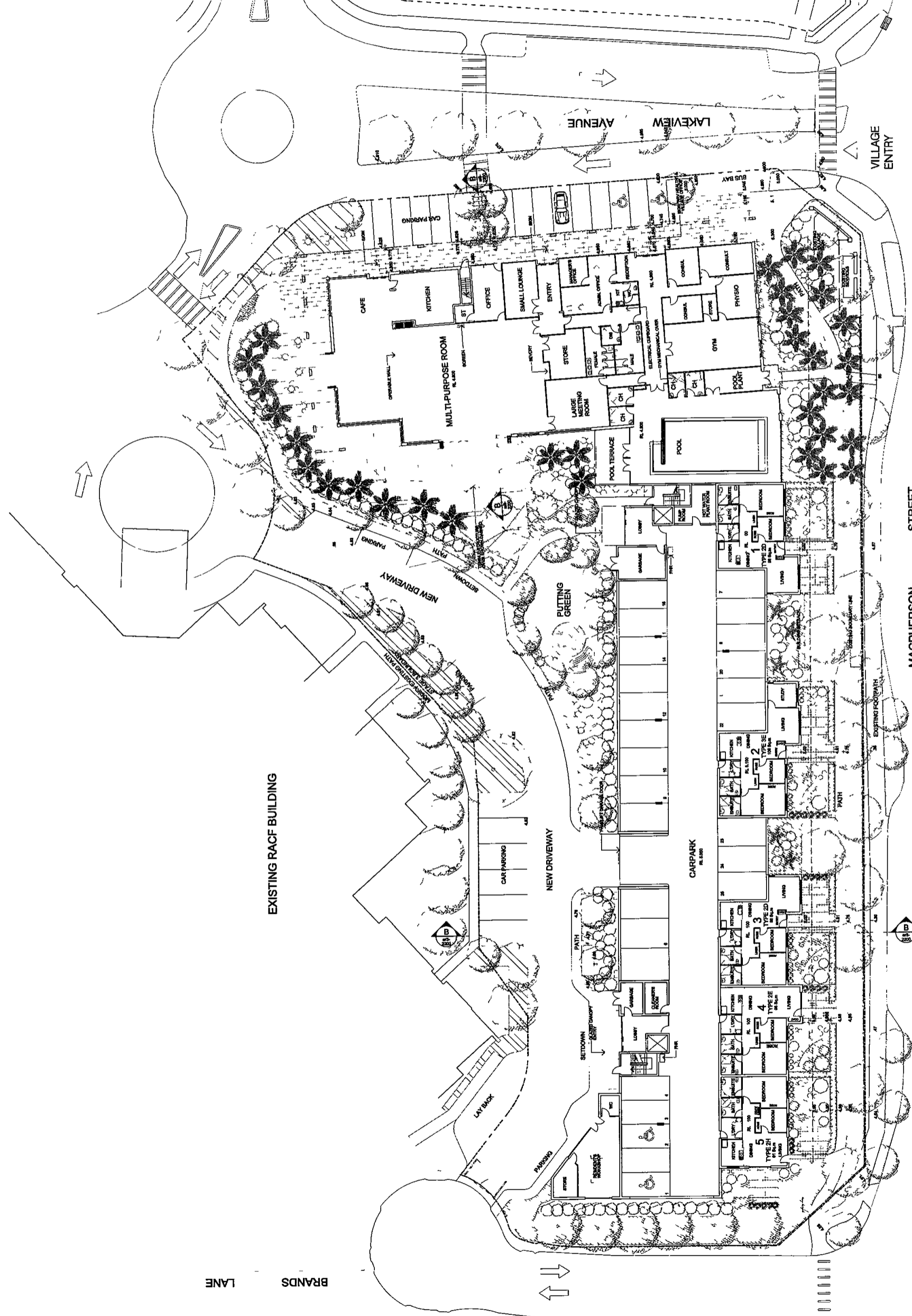
**3-0100**

**a03**

© 2007, all rights reserved. No part of this document may be reproduced, stored in a retrieval system, or transmitted in any form or by any means, electronic, mechanical, photocopying, recording, or by any information storage and retrieval system, without the prior written permission of the copyright owner.

1.0 15 1400 str. t. ch. frewood w. 2007  
 p. po. box 6038 w. h. wood w. 1615  
 t. (02) 8866 6001 f. (02) 8866 6126  
 m. h. g. p. h. i. m.

NO.	DATE	DESCRIPTION	BY	SCALE	STATUS
01	15/11/07	PRELIMINARY	W.H.	1:1	FOR PERMIT
02	15/11/07	REVISED	W.H.	1:1	FOR PERMIT
03	15/11/07	REVISED	W.H.	1:1	FOR PERMIT
04	15/11/07	REVISED	W.H.	1:1	FOR PERMIT
05	15/11/07	REVISED	W.H.	1:1	FOR PERMIT



**WARRIWOOD BROOK  
RETIREMENT VILLAGE  
STAGE 3**

**6-14 MACPHERSON ST  
WARRIWOOD**

**ANGLICAN  
RETIREMENT  
VILLAGES  
TRUSTEES OF SYDNEY**

**GROUND FLOOR PLAN**

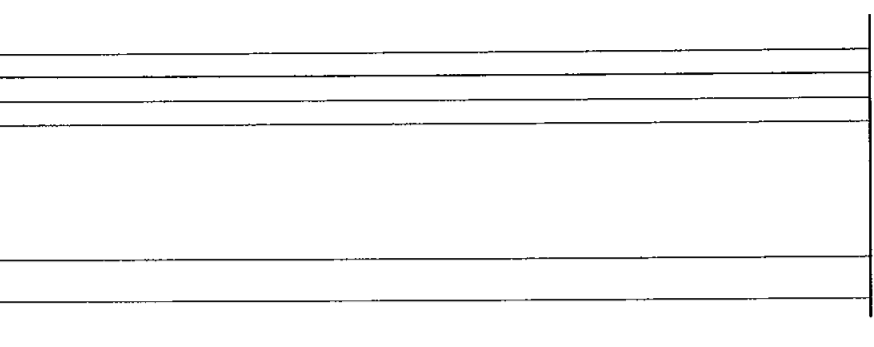
© copyright of this drawing is retained by the architect. No part of this drawing may be reproduced, stored in a retrieval system, or transmitted in any form or by any means, electronic, mechanical, photocopying, recording, or by any information storage and retrieval system, without the prior written permission of the architect.

THIS DRAWING IS THE PROPERTY OF THE ARCHITECT. IT IS TO BE USED ONLY FOR THE PROJECT AND SITE SPECIFICALLY IDENTIFIED HEREON. IT IS NOT TO BE REPRODUCED, COPIED, OR TRANSMITTED IN ANY FORM OR BY ANY MEANS, ELECTRONIC OR MECHANICAL, WITHOUT THE WRITTEN PERMISSION OF THE ARCHITECT.

NO PART OF THIS DRAWING IS TO BE USED FOR ANY OTHER PROJECT WITHOUT THE WRITTEN PERMISSION OF THE ARCHITECT.

NO PART OF THIS DRAWING IS TO BE USED FOR ANY OTHER PROJECT WITHOUT THE WRITTEN PERMISSION OF THE ARCHITECT.

NO.	REVISION	DATE	BY	CHKD.
1	ISSUED FOR PERMIT	11/11/11	NR	NR
2	ISSUED FOR PERMIT	11/11/11	NR	NR
3	ISSUED FOR PERMIT	11/11/11	NR	NR
4	ISSUED FOR PERMIT	11/11/11	NR	NR



**N R P**  
ARCHITECTURE

116 16th Street, Richmond, BC V6V 1A4  
 Tel: (604) 273-8888 Fax: (604) 273-8889  
 Email: info@nrp.ca www.nrp.ca

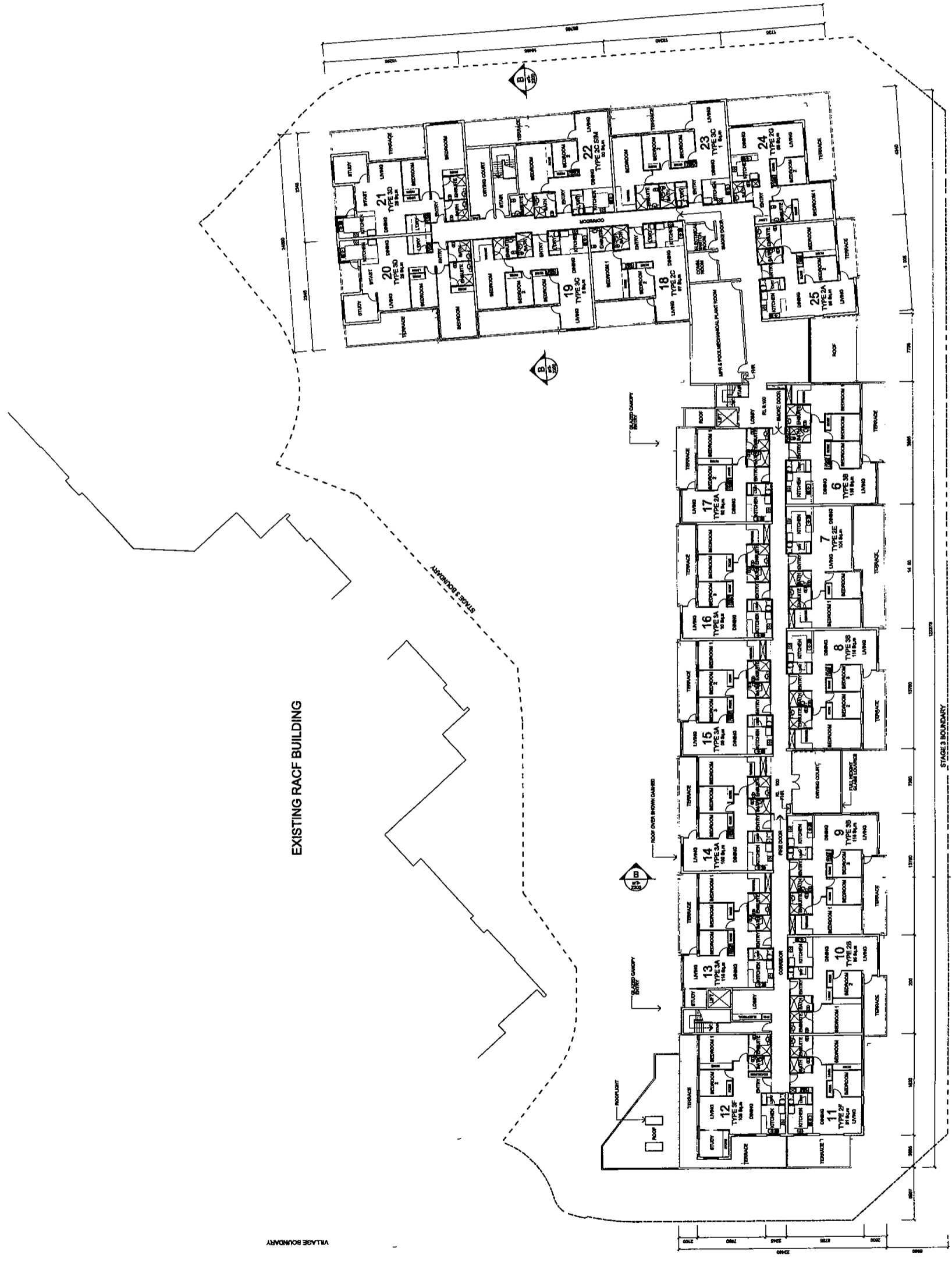
**WARRIEWOOD BROOK  
RETIREMENT VILLAGE  
STAGE 3**

**6-14 MACPHERSON ST  
WARRIEWOOD**



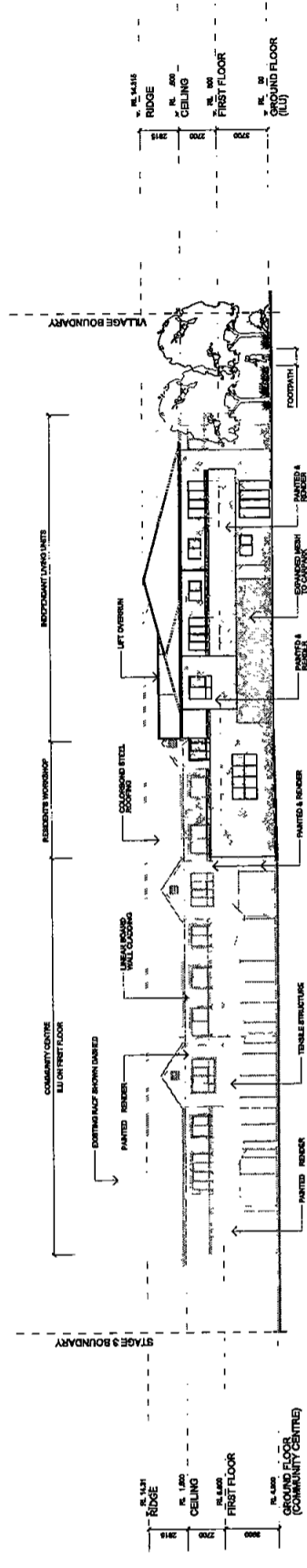
FIRST FLOOR PLAN

NO.	REVISION	DATE	BY	CHKD.
1	ISSUED FOR PERMIT	11/11/11	NR	NR
2	ISSUED FOR PERMIT	11/11/11	NR	NR
3	ISSUED FOR PERMIT	11/11/11	NR	NR
4	ISSUED FOR PERMIT	11/11/11	NR	NR

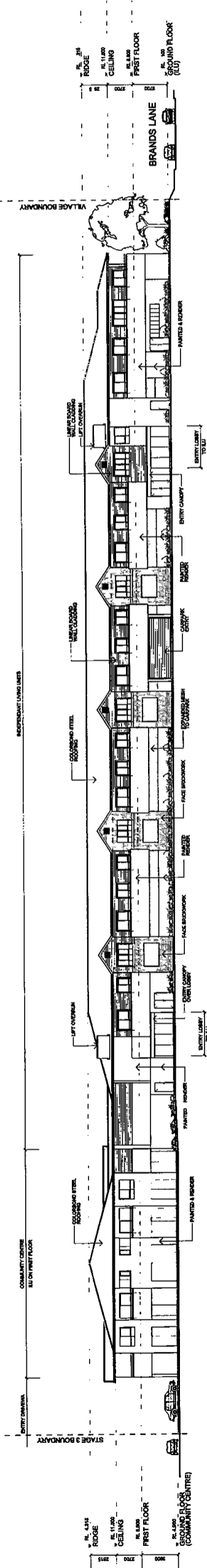


© copyright of this architectural drawing is reserved by the architect. This drawing is to be used only for the project and site for which it is prepared. It shall not be used for any other purpose without the written consent of the architect. The architect is not responsible for any errors or omissions in this drawing. The architect's liability is limited to the design and construction of the building. The architect is not responsible for any other matters. The architect is not responsible for any other matters. The architect is not responsible for any other matters.

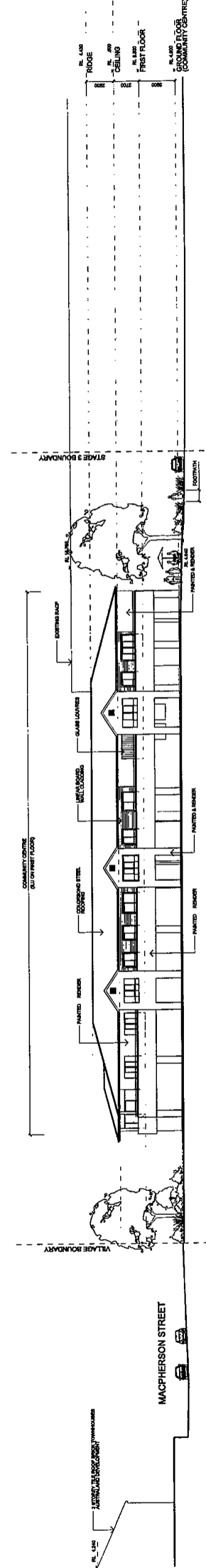
NO	DATE	DESCRIPTION	BY	CHECKED	SCALE
1	15/11/05	PRELIMINARY DRAWING	NRP	NRP	AS SHOWN
2	15/11/05	REVISED DRAWING	NRP	NRP	AS SHOWN
3	15/11/05	FINAL DRAWING	NRP	NRP	AS SHOWN



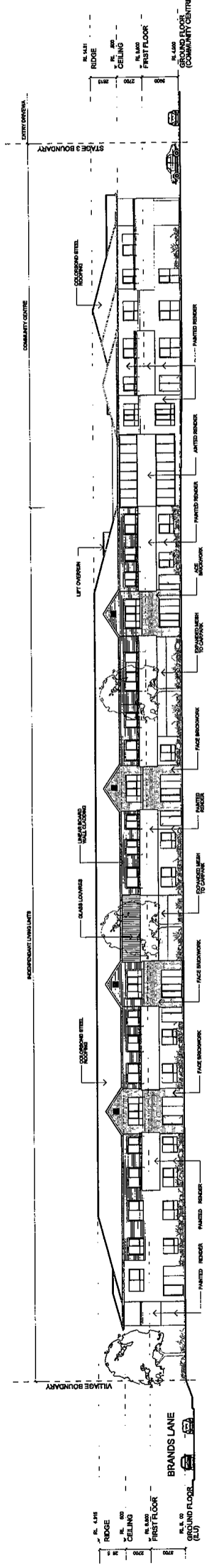
WEST ELEVATION



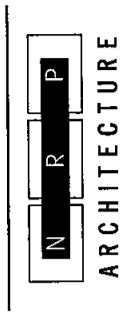
NORTH ELEVATION



EAST ELEVATION



SOUTH ELEVATION



ARCHITECTURE

15/11/05  
P 30 5035 W 1 h 1w00 W 1516  
t (02) 9886 8001 f (02) 9886 8123  
m 010 p 011 m

WARRIEWOOD BROOK  
RETIREMENT VILLAGE  
STAGE 3

6-14 MACPHERSON ST  
WARRIEWOOD



ELEVATIONS

DATE	SCALE	BY	CHECKED	PROJECT NO.
15/11/05	1:200	NRP	NRP	5105-01

ar 3 2500 a02