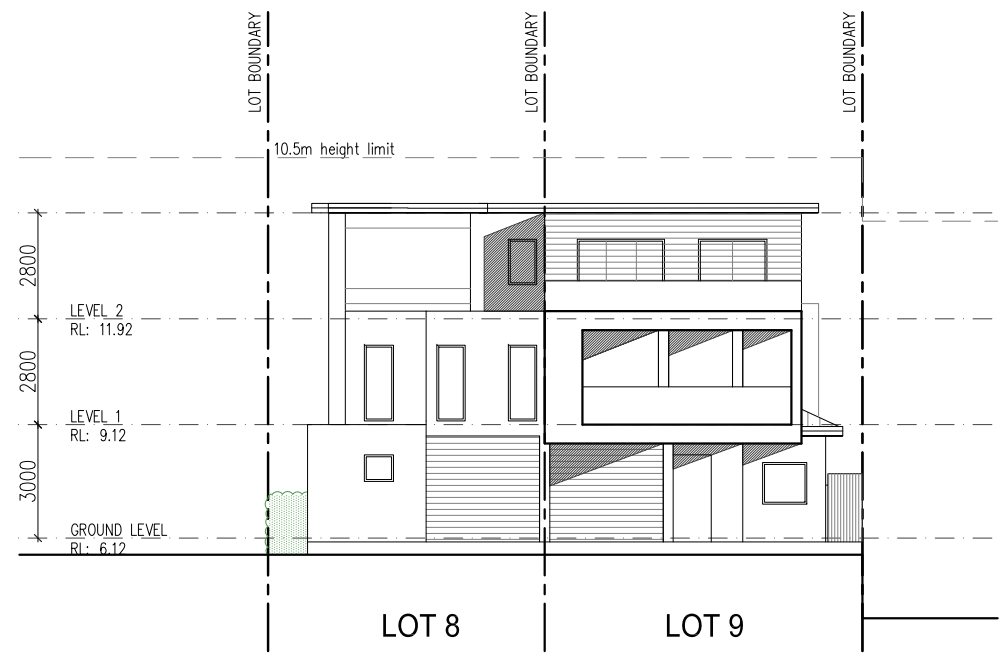


○ NORTH-WEST ELEVATION (TYREE PLACE ELEVATION)



○ SOUTH-WEST ELEVATION (LORIKEET GROVE ELEVATION)



○ NORTH-EAST ELEVATION

DEVELOPMENT APPLICATION

REV.	DESCRIPTION	DATE	REV.	DESCRIPTION	DATE
-	ISSUE FOR DEVELOPMENT APPLICATION	DEC 2015			

**ARH WARRIEWOOD
PTY LTD**

STEPHEN BOWERS ARCHITECTS
 ABN 64 087 958 423
 REG ARCHITECT: STEPHEN BOWERS (5810)
 SUITE 91, 26-32 PIRRAMA ROAD, JONES BAY WHARF
 PYRMONT NSW 2009
 p 02 8212 9705 m 0414 780 450
 email: stephen.bowers@stephenbowersarchitects.com
 www.stephenbowersarchitects.com

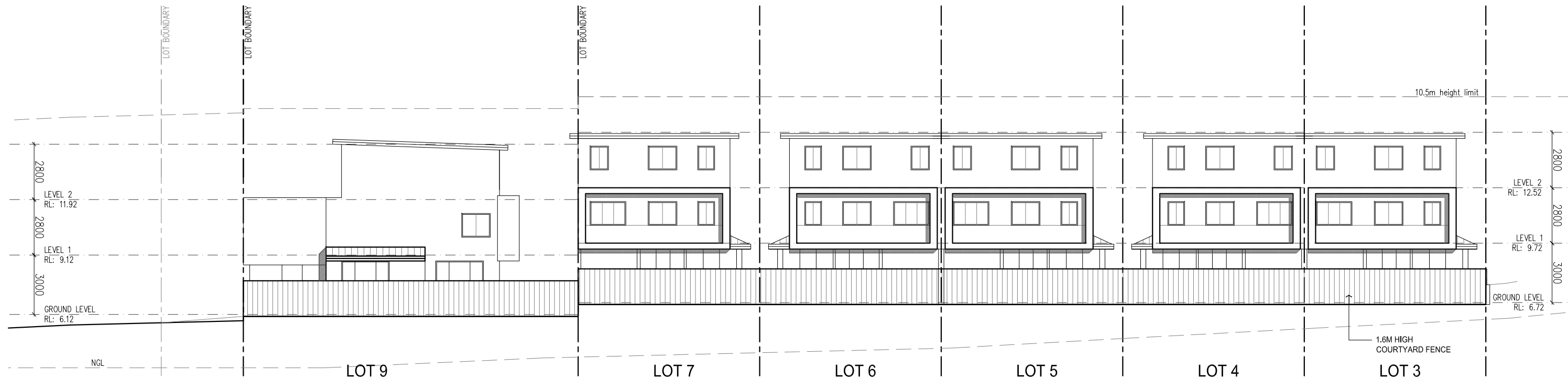
● **STEPHEN BOWERS ARCHITECTS**
 This drawing is protected by copyright.
 Reproduction or publication of the whole
 or part of the drawing without a license of
 the owner of the copyright is an
 infringement of copyright.
 Do not scale drawings
 Verify all dimension on site
 Report any discrepancies in documents to
 Architect

Address
**53C WARRIEWOOD ROAD
WARRIEWOOD
NSW 2102**



Drawing Title
**LOT 3 - 9
ELEVATIONS**

Scale	1:100(A1)/1:200(A3)	Date	DEC 2015
Drawn by	LN	Check by	S.B
Drawing No.	DA-013	Revision	
Cad file path.			

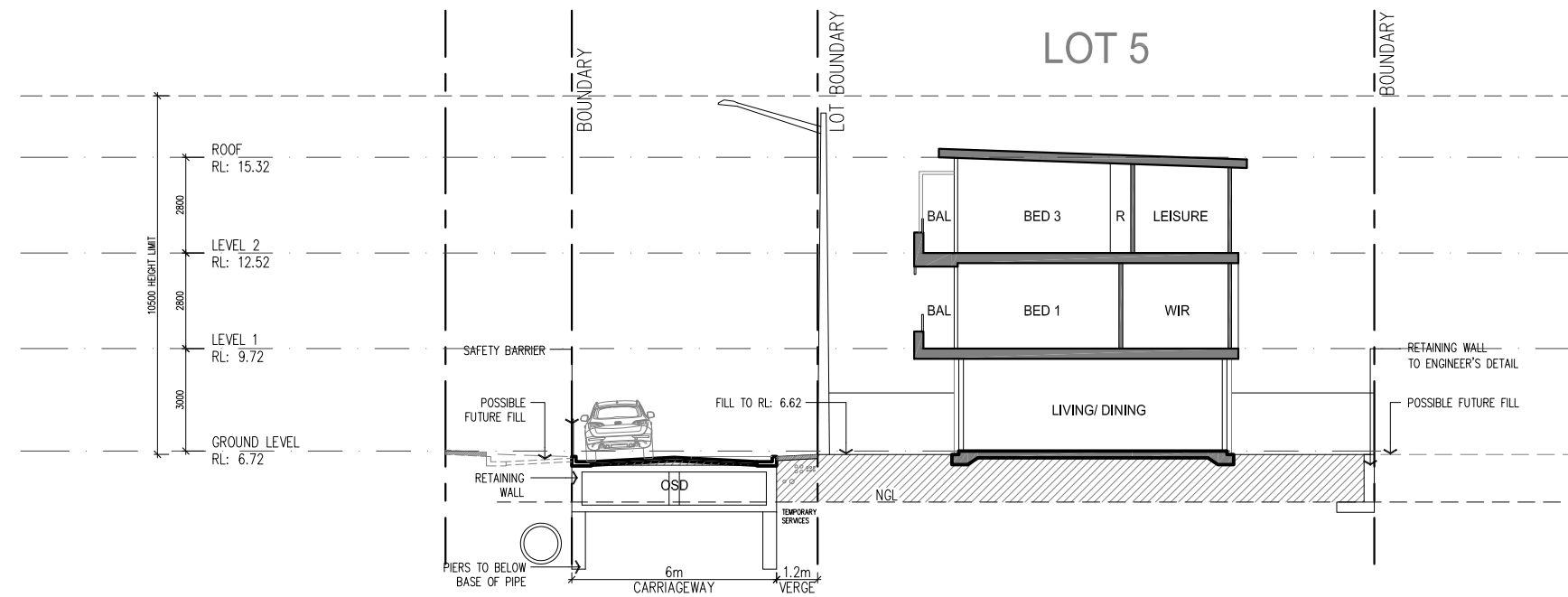


○ SOUTH-EAST ELEVATION

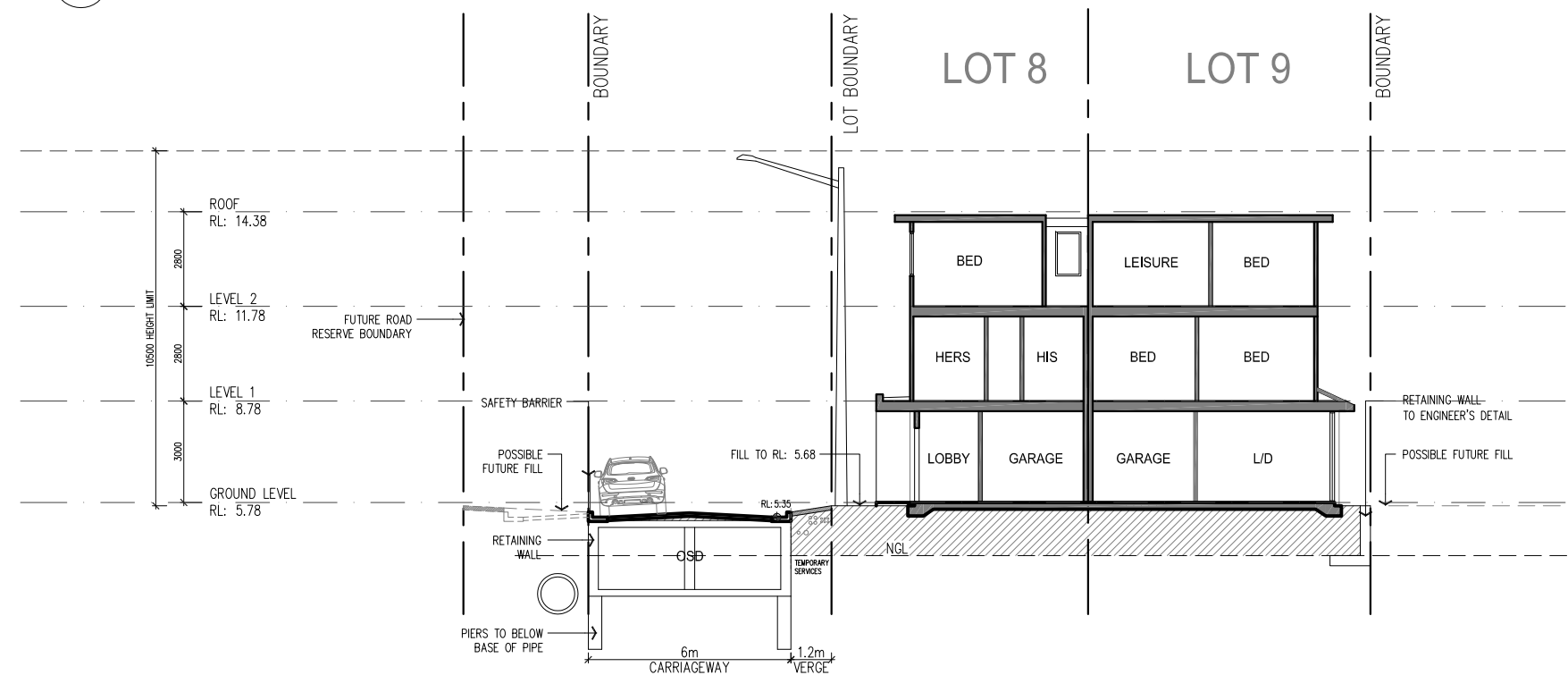
DEVELOPMENT APPLICATION

REV.	DESCRIPTION	DATE	REV.	DESCRIPTION	DATE
-	ISSUE FOR DEVELOPMENT APPLICATION	DEC 2015			

ARH WARRIEWOOD PTY LTD	STEPHEN BOWERS ARCHITECTS ABN 64 087 958 423 REG ARCHITECT: STEPHEN BOWERS (5810) SUITE 91, 26-32 PIRRAMA ROAD, JONES BAY WHARF PYRMONT NSW 2009 p 02 8212 9705 m 0414 780 450 email: stephen.bowers@stephenbowersarchitects.com www.stephenbowersarchitects.com	<p>● STEPHEN BOWERS ARCHITECTS</p> <p><small>This drawing is protected by copyright. Reproduction or publication of the whole or part of the drawing without a license of the owner of the copyright is an infringement of copyright.</small></p> <p><small>Do not scale drawings. Verify all dimension on site. Report any discrepancies in documents to Architect.</small></p>	<p>Address</p> <p>53C WARRIEWOOD ROAD WARRIEWOOD NSW 2102</p>		<p>Drawing Title</p> <p>LOT 3 - 9 ELEVATIONS</p>	<p>Scale 1:100(A1)/1:200(A3) Date DEC 2015</p> <p>Drawn by LN Check by S.B</p> <p>Drawing No. DA-014 Rev/Issn</p> <p>Cad file path.</p>
-----------------------------------	--	--	--	--	---	---



SECTION A



SECTION B

DEVELOPMENT APPLICATION

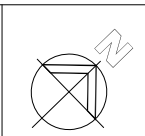
REV.	DESCRIPTION	DATE	REV.	DESCRIPTION	DATE
-	ISSUE FOR DEVELOPMENT APPLICATION	DEC 2015			

**ARH WARRIEWOOD
PTY LTD**

STEPHEN BOWERS ARCHITECTS
 ABN 64 087 958 423
 REG ARCHITECT: STEPHEN BOWERS (5810)
 SUITE 91, 26-32 FIRBANKA ROAD, JONES BAY WHARF
 PYRMONT NSW 2009
 p 02 8212 9705 m 0414 780 450
 email: stephen.bowers@stephenbowersarchitects.com
 www.stephenbowersarchitects.com

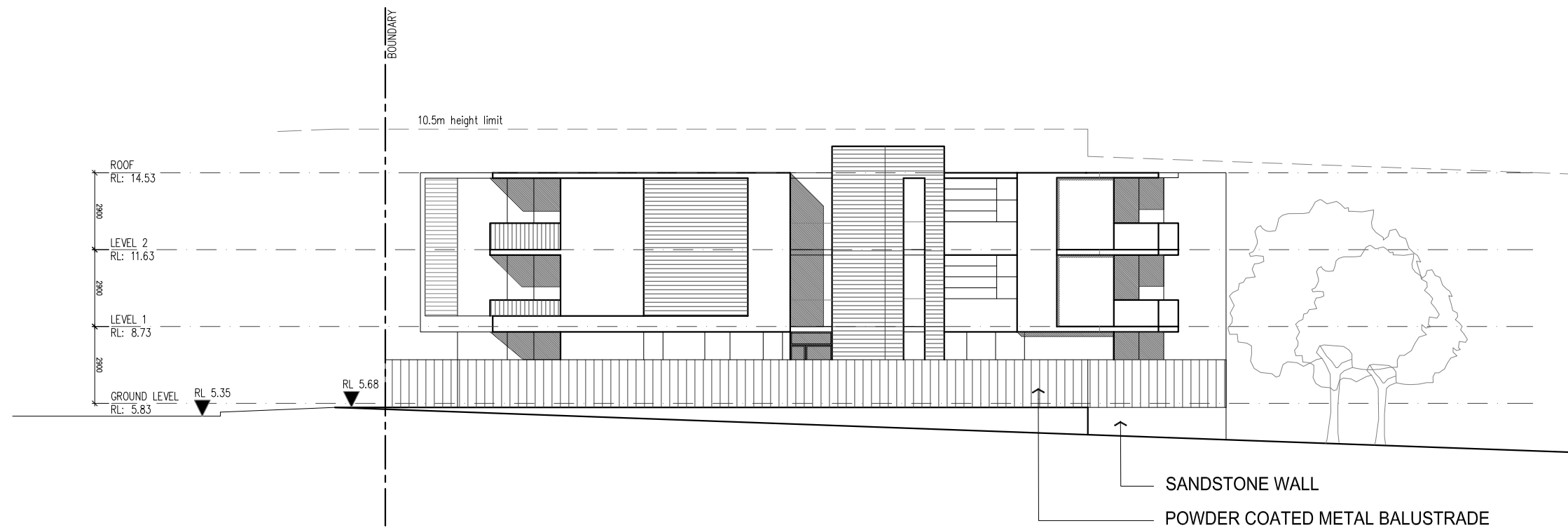
● **STEPHEN BOWERS ARCHITECTS**
 This drawing is protected by copyright.
 Reproduction or publication of the whole
 or part of the drawing without a license of
 the owner of the copyright is an
 infringement of copyright.
 Do not scale drawings
 Verify all dimension on site
 Report any discrepancies in documents to
 Architect

Address
**53C WARRIEWOOD ROAD
WARRIEWOOD
NSW 2102**

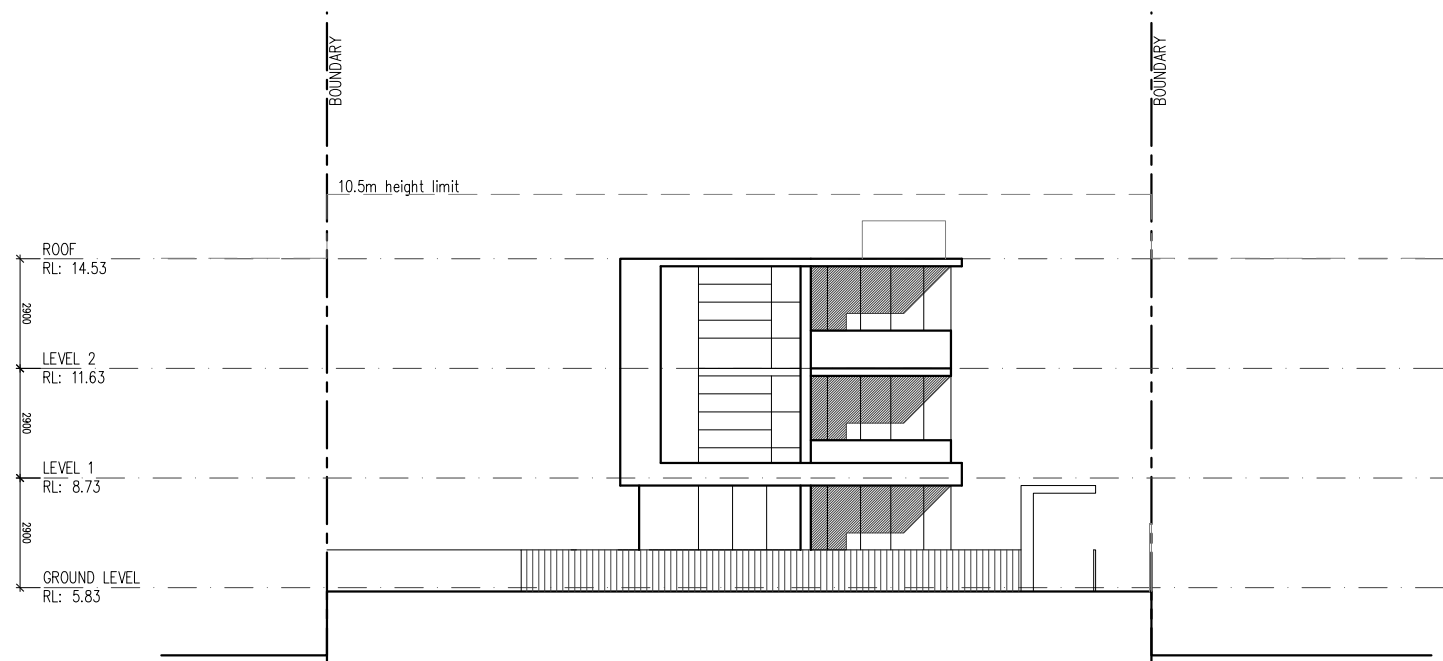


Drawing Title
**LOT 3 - 9
SECTIONS**

Scale 1:100(A1)/1:200(A3) Date DEC 2015
 Drawn by LN Check by S.B
 Drawing No. DA-015 Rev/ston
 Cad file path.



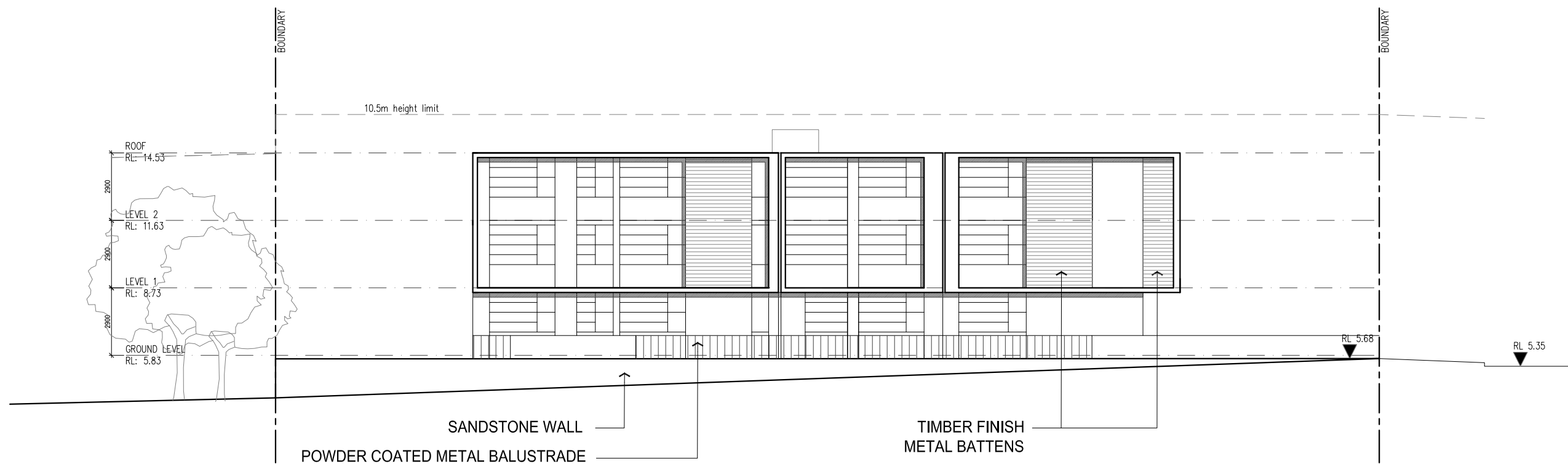
○ NORTH-WEST ELEVATION



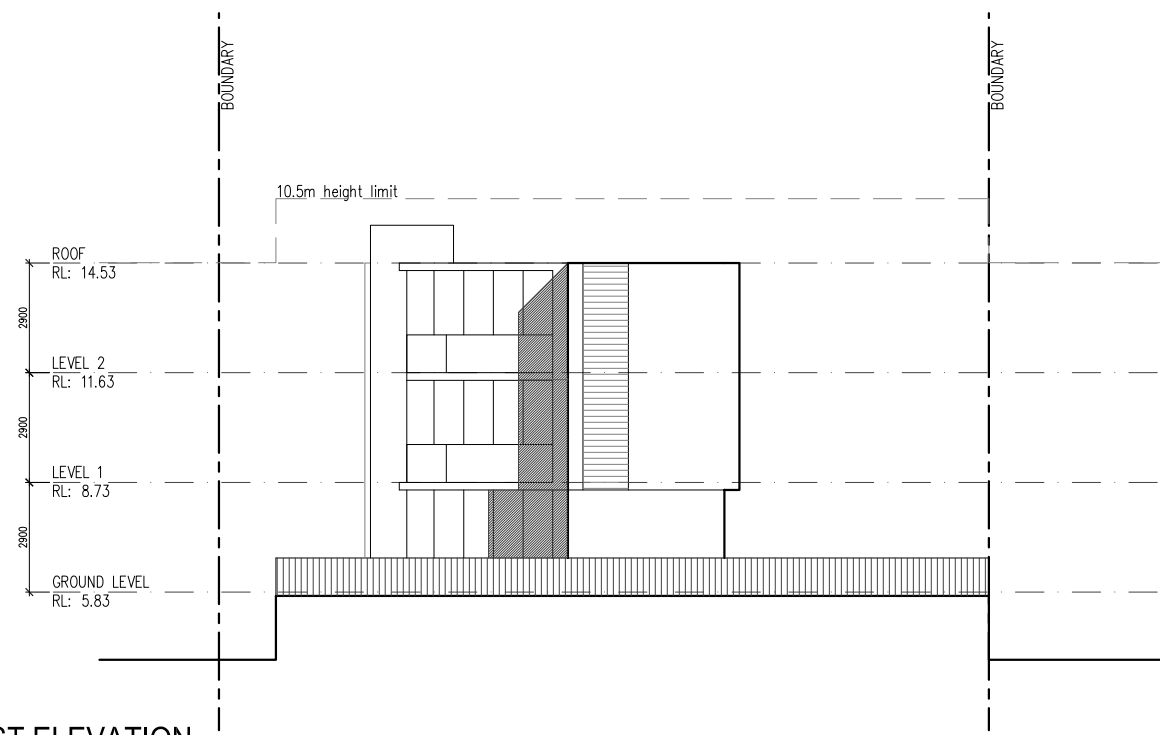
○ NORTH-EAST ELEVATION (FRONT BOUNDARY AT LORIKEET GROVE)

DEVELOPMENT APPLICATION

REV.	DESCRIPTION	DATE	REV.	DESCRIPTION	DATE									
-	ISSUE FOR DEVELOPMENT APPLICATION	DEC 2015				ARH WARRIEWOOD PTY LTD	STEPHEN BOWERS ARCHITECTS ABN 64 087 958 423 REG ARCHITECT: STEPHEN BOWERS (5810) SUITE 91, 26-32 PIRRAMA ROAD, JONES BAY WHARF PYRMONT NSW 2009 p 02 8212 9705 m 0414 780 450 email: stephen.bowers@stephenbowersarchitects.com www.stephenbowersarchitects.com	● STEPHEN BOWERS ARCHITECTS This drawing is protected by copyright. Reproduction or publication of the whole or part of the drawing without a license of the owner of the copyright is an infringement of copyright. Do not scale drawings Verify all dimension on site Report any discrepancies in documents to Architect	Address 53C WARRIEWOOD ROAD WARRIEWOOD NSW 2102		Drawing Title LOT 10 ELEVATIONS 01		Scale 1:100(A1)/1:200(A3)	Date DEC 2015
		Drawn by LN	Check by S.B											
		Drawing No. DA-025	Rev/Isn											
												Cad file path.		



○ SOUTH-EAST ELEVATION



○ SOUTH-WEST ELEVATION

DEVELOPMENT APPLICATION

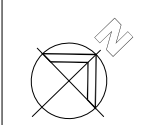
REV.	DESCRIPTION	DATE	REV.	DESCRIPTION	DATE
-	ISSUE FOR DEVELOPMENT APPLICATION	DEC 2015			

**ARH WARRIEWOOD
PTY LTD**

STEPHEN BOWERS ARCHITECTS
 ABN 64 087 958 423
 REG ARCHITECT: STEPHEN BOWERS (5810)
 SUITE 91, 26-32 PIRRAMA ROAD, JONES BAY WHARF
 PYRMONT NSW 2009
 p 02 8212 9705 m 0414 780 450
 email: stephen.bowers@stephenbowersarchitects.com
 www.stephenbowersarchitects.com

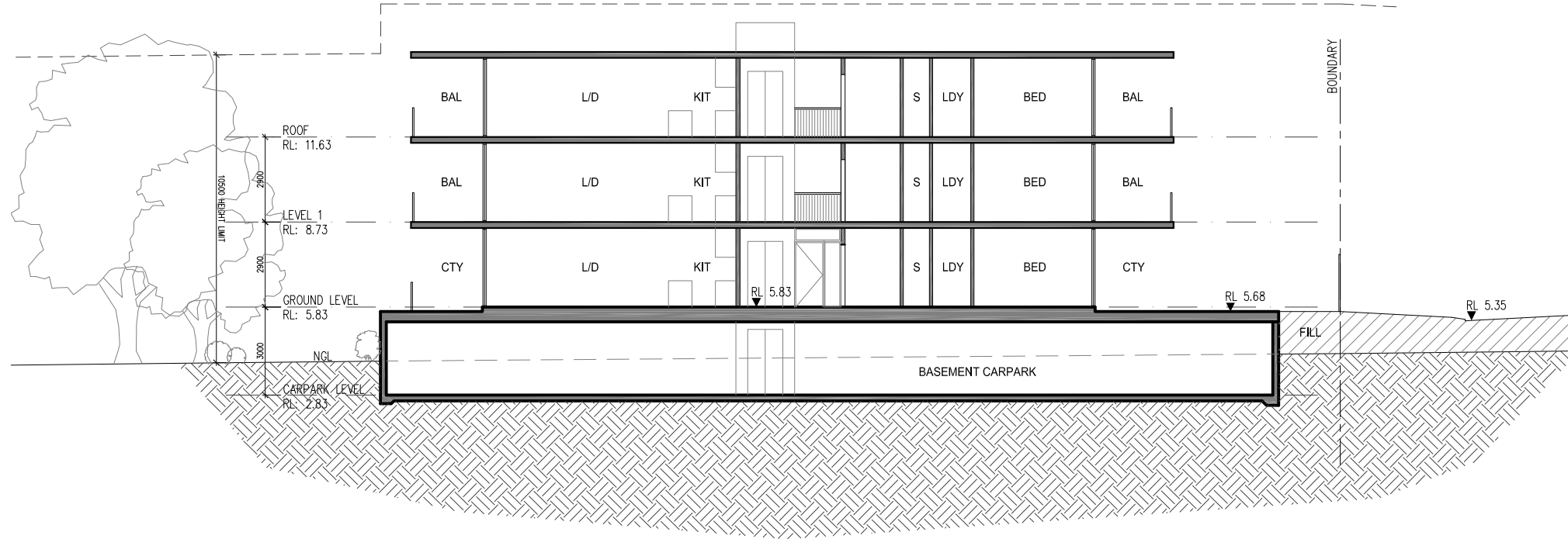
● **STEPHEN BOWERS ARCHITECTS**
 This drawing is protected by copyright.
 Reproduction or publication of the whole
 or part of the drawing without a license of
 the owner of the copyright is an
 infringement of copyright.
 Do not scale drawings
 Verify all dimension on site
 Report any discrepancies in documents to
 Architect

Address
**53C WARRIEWOOD ROAD
WARRIEWOOD
NSW 2102**

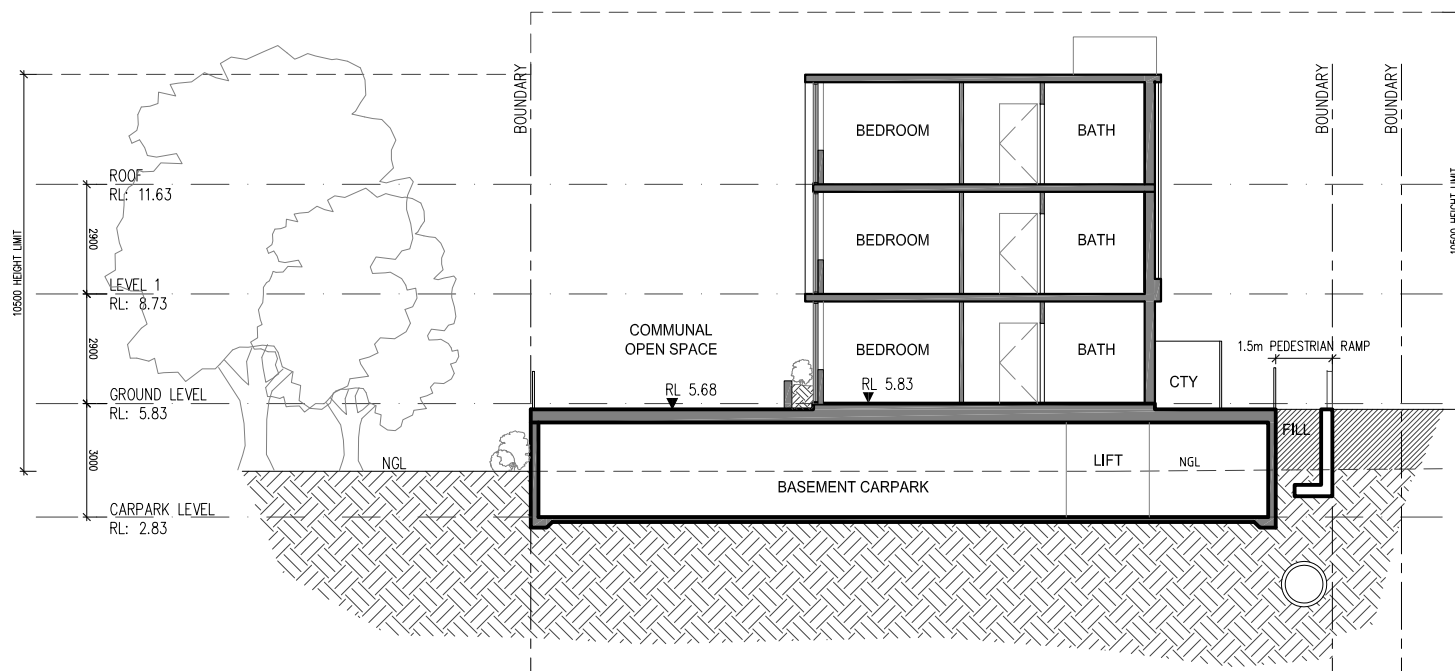


Drawing Title
**LOT 10
ELEVATIONS 02**

Scale 1:100(A1)/1:200(A3) Date DEC 2015
 Drawn by LN Check by S.B
 Drawing No. DA-026 Revison
 Cad file path.



SECTION C



SECTION D

DEVELOPMENT APPLICATION

REV.	DESCRIPTION	DATE	REV.	DESCRIPTION	DATE
-	ISSUE FOR DEVELOPMENT APPLICATION	DEC 2015			

**ARH WARRIEWOOD
PTY LTD**

STEPHEN BOWERS ARCHITECTS
 ABN 64 087 958 423
 REG ARCHITECT: STEPHEN BOWERS (5810)
 SUITE 91, 26-32 PIRRAMA ROAD, JONES BAY WHARF
 PYRMONT NSW 2009
 p 02 8212 9705 m 0414 780 450
 email: stephen.bowers@stephenbowersarchitects.com
 www.stephenbowersarchitects.com

● **STEPHEN BOWERS ARCHITECTS**
 This drawing is protected by copyright.
 Reproduction or publication of the whole
 or part of the drawing without a license of
 the owner of the copyright is an
 infringement of copyright.
 Do not scale drawings
 Verify all dimension on site
 Report any discrepancies in documents to
 Architect

Address
**53C WARRIEWOOD ROAD
 WARRIEWOOD
 NSW 2102**



Drawing Title
**LOT 10
 SECTIONS**

Scale 1:100(A1)/1:200(A3) Date DEC 2015
 Drawn by LN Check by S.B
 Drawing No. DA-027 Rev/Issn
 Cad file path.