



**Consulting.**<sup>TM</sup>  
an Elephants Foot Company

1112-1116 Barrenjoey Rd Palm Beach  
Residential Development

## OPERATIONAL WASTE MANAGEMENT PLAN

19/09/2024  
Report No. S01093  
Revision H

Client

---

**Palmdev Pty Ltd**

Level 3, 17 Castlereagh st Sydney NSW 2000

Architect

---

**Koichi Takada Architects**

<https://koichitakada.com/>



## REVISION REFERENCE

Revision	Date	Prepared by	Description
A	16/08/2021	H Wilkes	Draft
B	2/12/2021	H Wilkes	Amendment
C	8/12/2021	H Wilkes	Amendment
D	5/01/2022	H Wilkes	Final
E	27/06/2023	H Wilkes	Updated Plans
F	18/07/2023	H Wilkes	Amendment
G	30/08/2023	H Wilkes	Updated Plans
H	19/09/2024	H Wilkes	Amendment

The information contained in this document produced by Elephants Foot Recycling Solutions (EFRS) is solely for the use of the client identified on the cover sheet for the purpose for which it has been prepared for. EFRS undertakes no duty, nor accepts any responsibility for any third party who may rely upon this document. Reproduction, publication or distribution of this document without written permission from EFRS is strictly prohibited.

## TABLE OF CONTENTS

TABLE OF FIGURES .....	iv
LIST OF TABLES.....	iv
GLOSSARY OF ABBREVIATIONS AND TERMS .....	i
1 INTRODUCTION .....	2
1.1 SCOPE OF REPORT .....	2
1.2 REPORT CONDITIONS .....	3
2 LEGISLATION & GUIDANCE .....	4
3 DEVELOPMENT OVERVIEW.....	5
3.1 SITE LOCATION.....	5
4 RESIDENTIAL WASTE MANAGEMENT .....	6
4.1 RESIDENTIAL BIN SUMMARY .....	6
4.2 RESIDENTIAL WASTE DISPOSAL PROCEDURES.....	7
4.3 RESIDENTIAL WASTE COLLECTION PROCEDURES.....	7
5 RETAIL WASTE MANAGEMENT .....	8
5.1 RETAIL WASTE GENERATION ESTIMATES.....	8
5.2 RETAIL BIN SUMMARY.....	8
5.3 RETAIL WASTE DISPOSAL PROCEDURES.....	9
5.4 RETAIL WASTE COLLECTION PROCEDURES.....	9
5.5 OTHER WASTE MANAGEMENT CONSIDERATIONS .....	9
5.5.1 BATHROOMS .....	9
5.5.2 LIQUID WASTE .....	9
5.5.3 PROBLEM WASTE.....	9
6 STAKEHOLDER ROLES & RESPONSIBILITIES .....	10
7 SOURCE SEPARATION .....	11
8 EDUCATION .....	12
8.1 SIGNAGE.....	12
8.2 POLLUTION PREVENTION.....	12
9 WASTE ROOMS .....	13
10 BIN MOVING PATHS .....	14
11 CONSTRUCTION REQUIREMENTS.....	15
11.1 ADDITIONAL CONSIDERATIONS .....	15
12 USEFUL CONTACTS.....	16
APPENDIX A: ARCHITECTURAL PLANS.....	17
APPENDIX: A.1 GROUND LEVEL – WASTE FACILITES.....	18
APPENDIX B: PRIMARY WASTE MANAGEMENT PROVISIONS.....	19
APPENDIX: B.1 TYPICAL BIN SPECIFICATIONS.....	20
APPENDIX: B.2 SIGNAGE FOR WASTE AND RECYCLING BINS.....	21

APPENDIX: B.3	TYPICAL COLLECTION VEHICLE INFORMATION .....	23
APPENDIX: B.4	TYPICAL BIN MOVERS .....	25
APPENDIX C:	SECONDARY WASTE MANAGEMENT PROVISIONS .....	26
APPENDIX: C.1	TYPICAL COOKING OIL CONTAINERS .....	27
APPENDIX: C.2	TYPICAL SOURCE SEPARATION BINS .....	28

## TABLE OF FIGURES

Figure 1.	Site Location.....	5
-----------	--------------------	---

## LIST OF TABLES

Table 1:	Estimated Waste and Recycling Volumes – Commercial and Retail .....	8
Table 2:	Stakeholder Roles and Responsibilities .....	10
Table 3:	Operational Waste Streams.....	11
Table 4:	Waste Room Areas.....	13
Table 5:	Waste Room Requirements.....	13

## GLOSSARY OF ABBREVIATIONS AND TERMS

<b>TERM</b>	<b>DESCRIPTION</b>
<i>Bin-carting Route</i>	Travel route for transferring bins from the storage area to a nominated collection point
<i>Collection Area/Point</i>	The identified position or area where general waste or recyclables are loaded onto the collection vehicle
<i>Compactor</i>	A machine for compressing waste into disposable or reusable containers
<i>Composter</i>	A container/machine used for composting specific food scraps
<i>Crate</i>	A plastic box used for the collection of recyclable materials
<i>DA</i>	Development Application
<i>DCP</i>	Development Control Plan
<i>EPA</i>	Environmental Protection Authority
<i>HRV</i>	Heavy Rigid Vehicle described by AS 2890.2-2002 Parking facilities – Off-street commercial vehicle facilities
<i>L</i>	Litre(s)
<i>LEP</i>	Local Environmental Plans guide planning decisions for local government areas
<i>Mixed Use Development</i>	A development comprised of two or more different uses
<i>MUD</i>	Multi-Unit Dwellings comprise of a development with more than one dwelling. This ranges from dual occupancies and attached dwellings to high-rise residential developments
<i>Mobile Garbage Bin(s) (MGB)</i>	A waste container generally constructed of plastic with wheels with a capacity in litres of 120, 240, 360, 660, 1000 or 1100
<i>MRV</i>	Medium Rigid Vehicle described by AS 2890.2-2002 Parking facilities – Off-street commercial vehicle facilities
<i>Onsite Collection</i>	When the collection vehicle enters the property and services the development within the property boundary from a designated loading area
<i>Owners Corporation</i>	An organisation or group of persons that is identified by a particular name and acts, or may act, as an entity
<i>Service Bins</i>	Bin set aside to be placed under a chute while the remainder of the bins are being collected
<i>SRV</i>	Small Rigid Vehicle described by AS 2890.2-2002 Parking facilities – Off-street commercial vehicle facilities
<i>Wheel-in wheel-out service</i>	A type of waste collection service offered by local councils where the council waste collection personnel enter the premises to collect the bins and returns them to the property

# 1 INTRODUCTION

Elephants Foot Recycling Solutions (EFRS) has been engaged to prepare the following waste management plan for the operational management of waste generated by the mixed use development located at 1112-1116 Barrenjoey Rd Palm Beach.

Waste management strategies and audits are required for new developments in order to support the design and sustainable performance of the building. It is EFRS's belief that a successful waste management strategy contains three key objectives:

- i. **Promote responsible source separation** to reduce the amount of waste that goes to landfill by implementing convenient and efficient waste management systems.
- ii. **Ensure adequate waste provisions and robust procedures** that will cater for potential changes during the operational phase of the development.
- iii. **Comply** with all relevant council codes, policies, and guidelines.

To achieve these objectives, this operational waste management plan (OWMP) identifies the different waste streams likely to be generated during the operational phase of the development, as well as how the waste will be handled and disposed, details of bin sizes/quantities and waste rooms, descriptions of the proposed waste management equipment used, and information on waste collection points and frequencies.

It is essential that this OWMP is integrated into the overall management of the building and is clearly communicated to all relevant stakeholders.

## 1.1 SCOPE OF REPORT

This operational waste management plan (OWMP) only applies to the **operational** phase of the proposed development; therefore, the requirements outlined in this OWMP must be implemented during the operational phase of the site and may be subject to review upon further expansion of, and/or changes to the development.

The waste management of the **construction** and **demolition** phases of the development are not addressed in this report. A construction and demolition WMP will need to be provided separately to this report. EFRS can supply this if required.

## 1.2 REPORT CONDITIONS

The purpose of this report is to document an OWMP as part of a development application, which is supplied by EFRS with the following limitations:

- Drawings, estimates and information contained in this OWMP have been prepared by analysing the information, plans and documents supplied by the client and third parties including Council and other government agencies. The assumptions based on the information contained in the OWMP is outside the control of EFRS,
- The figures presented in the report are an estimate only – the actual amount of waste generated will be dependent on the occupancy rate of the building/s and waste generation intensity as well as the building management's approach to educating residents and tenants regarding waste management operations and responsibilities,
- The building manager will adjust waste management operations as required based on actual waste volumes (e.g. if waste is greater than estimated) and increase the number of bins and collections accordingly,
- The report will not be used to determine or forecast operational costs or prepare any feasibility study or to document any safety or operational procedures,
- The report has been prepared with all due care; however no assurance is made that the OWMP reflects the actual outcome of the proposed waste facilities, services, and operations, and EFRS will not be liable for plans or results that are not suitable for purpose due to incorrect or unsuitable information or otherwise,
- EFRS offer no warranty or representation of accuracy or reliability of the OWMP unless specifically stated,
- Any manual handling equipment recommended in this OWMP should be provided at the recommendation of the appropriate equipment provider who will assess the correct equipment for supply,
- Design of waste management equipment and systems must be approved by the supplier,
- EFRS cannot be held accountable for late changes to the design after the OWMP has been submitted to Council,
- EFRS will provide specifications and recommendations on bin access and travel paths within the OWMP, however it is the architect's responsibility to ensure the architectural drawings meet these provisions,
- EFRS are not required to provide information on collection vehicle swept paths, head heights, internal manoeuvring or loading requirements. It is assumed this information will be provided by a traffic consultant,
- Council are subject to changing waste and recycling policies and requirements at their own discretion.

This OWMP is only finalised once the Draft Watermark has been removed. If the Draft Watermark is present, the information in the OWMP is not confirmed.

## 2 LEGISLATION & GUIDANCE

Waste management and resource recovery regulation in Australia is administered by the Australian Constitution, Commonwealth laws, and international agreements. State and territory governments maintain primary responsibility for controlling development and regulating waste. The following legislation has been enacted in New South Wales, and provides the lawful underpinnings of this OWMP.

- NSW Environmental Planning & Assessment Act 1979
- NSW Protection of the Environment Operations Act 1997
- NSW Waste Avoidance & Resource Recovery Act 2001

At the local level, councils or Local Government Areas (LGAs) require OWMPs to be included in new development applications. This OWMP is specifically required by:

- Pittwater Development Control Plan
- Pittwater Local Environmental Plan

The primary purpose of a development control plan (DCP) is to guide development according to the aims of the corresponding local environmental plan (LEP). The DCP must be read in conjunction with the provisions of the relevant LEP.

Information provided in this OWMP comes from a wide range of waste management guidance at the local, state, and federal levels. The primary sources of guidance include:

- Northern Beaches *Waste Management Guidelines* 2016
- NSW Better Practice Guidelines for Waste Management and Recycling in Commercial and Industrial Facilities 2012
- NSW Better practice guide for resource recovery in residential developments 2019
- NSW Waste Avoidance and Resource Recovery (WARR) Strategy 2014-2021
- NSW Waste Classification Guidelines 2014
- Australia's National Waste Policy 2018



### 3 DEVELOPMENT OVERVIEW

The proposed development falls under the LGA of Northern Beaches Council, and consists of:

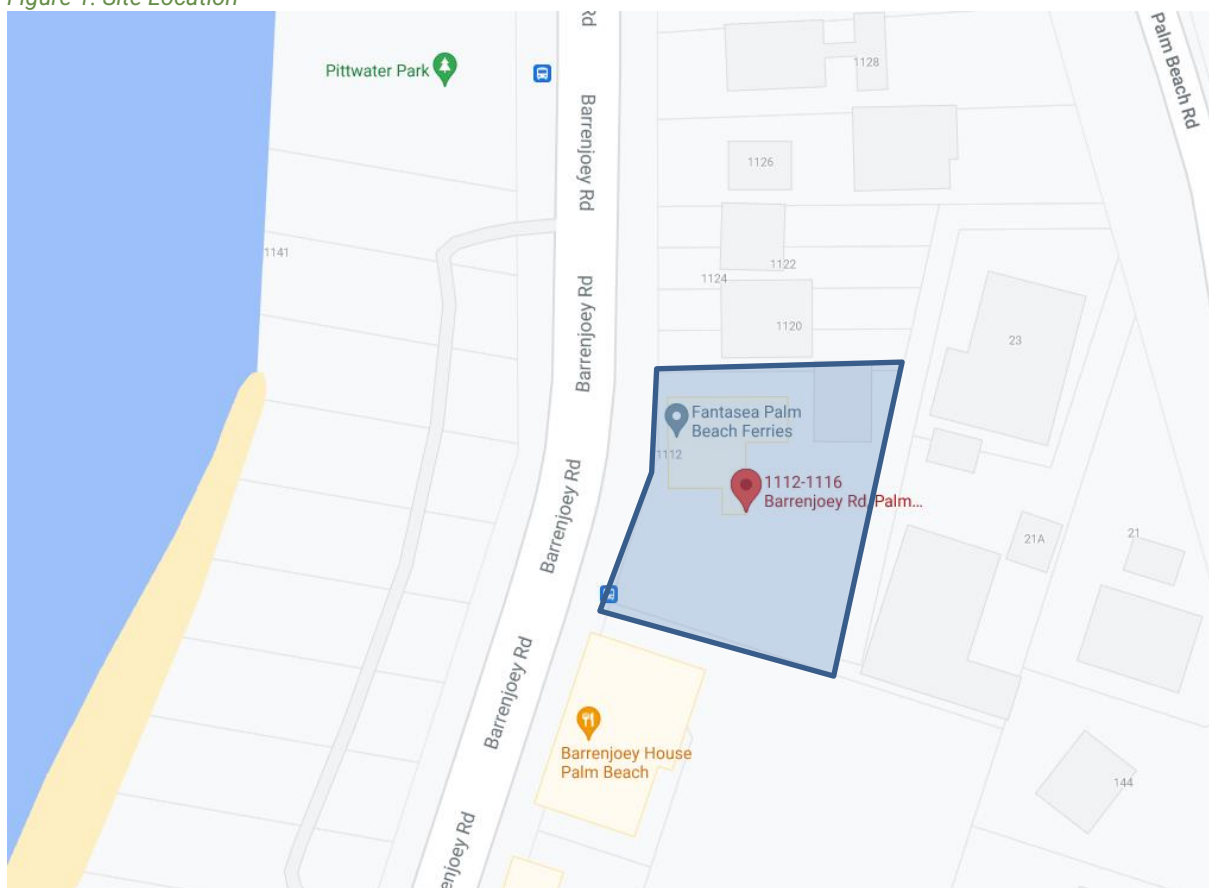
- One building with 5 levels and one basement level
  - 5 residential units in total
  - 2 retail tenancies the ground level with a GFA of 372m<sup>2</sup>

All figures and calculations are based on area schedules as advised by our client and shown on architectural drawings.

#### 3.1 SITE LOCATION

The site is located at 1112-1116 Barrenjoey Rd Palm Beach, as shown in Figure.1. The site has frontages and vehicle access via Barrenjoey Rd.

Figure 1. Site Location



Source: Google Maps

## 4 RESIDENTIAL WASTE MANAGEMENT

The following section outlines best practice waste management for the development, including waste generation estimates and waste disposal and collection procedures.

### 4.1 RESIDENTIAL BIN SUMMARY

Based Waste Referral Response for Application No DA2023/1289 dated 27/09/2023 the recommended bin quantities and collection frequencies are as follows:

**General Waste:** 2 x 240L MGBs collected **1 x weekly**

**Recycling – Paper and Cardboard:** 3 x 240L MGBs collected **1 x weekly**

**Recycling – Co-Mingled:** 3 x 240L MGBs collected **1 x weekly**

During operation, it is the responsibility of the building manager to monitor the number of bins required for the residential component. Waste and recycling volumes may change according to residents' attitudes to waste disposal and recycling, building occupancy levels or development's management. Any requirements for adjusting the capacity of the waste facilities can be achieved by changing the number of bins, the bin sizes or collection frequencies. Building management will be required to negotiate any changes to bins or collections with the collection service provider.

## 4.2 RESIDENTIAL WASTE DISPOSAL PROCEDURES

The resident will be provided with a communal waste room on the ground level containing 240L MGBs for waste, co-mingled recycling, paper/cardboard recycling and FOGO waste. The residents will be responsible for walking their waste and recycling to the Communal Waste Room and placing their waste and recycling into the correct bin.

## 4.3 RESIDENTIAL WASTE COLLECTION PROCEDURES

Council will be engaged to collect the waste, co-mingled recycling and paper and cardboard recycling in accordance with council's collection schedule. This report assumes all bins are collected once weekly.

On the night before collection days, the building manager will move the bins from the Communal Bin Room to the Residential Bin Collection Area within 6.5m of Barrenjoey Rd on the southern boundary.

To service the bins, a Council collection vehicle will park on Barrenjoey Road and collect the bins from the Residential Bin Collection Area via a collect and return arrangement.

After the bins have been serviced, the building manager is responsible for returning the bins to the Communal Bin Room.

## 5 RETAIL WASTE MANAGEMENT

The following section outlines best practice waste management for the retail components of the development, including waste generation estimates and waste disposal and collection procedures.

### 5.1 RETAIL WASTE GENERATION ESTIMATES

The Northern Beaches Council's *Waste Management Guidelines 2016* has been referenced to calculate the total number of bins required for the anticipated tenants. Calculations are based on generic waste and recycling rates, and volumes of waste and recycling may differ according to the tenants' actual waste management practice.

The following table shows the estimated volume (L) of general waste and recyclables that will be generated by the retail tenants. It is assumed the retail tenants will share bin room and collection service. The following estimates are based on a seven-day operating week.

*Table 1: Estimated Waste and Recycling Volumes – Commercial and Retail*

Waste Generation Rate Type	NLA (m <sup>2</sup> )	General Waste Generation Rates (L/100m <sup>2</sup> /day)	Generated General Waste (L/week)	Recycling Generation Rate (L/100m <sup>2</sup> /day)	Generated Recycling (L/week)
Retail Store (Non-food)	372	50	1302	50	1302
<b>TOTAL</b>	<b>372</b>		<b>1302</b>		<b>1302</b>
<b>Equipment and Collections</b>	General Waste Bin Size (L)		240	Recycling Bin Size (L)	240
	General Waste Bins Per Week		6	Recycling Bins Per Week	6
	General Waste Collections per Week		2	Recycling Collections per Week	2
	Total General Waste Bins Required		<b>3</b>	Total Recycling Bins Required	<b>3</b>

### 5.2 RETAIL BIN SUMMARY

Based on the estimated waste generated by the retail tenancy, the recommended bin quantities and collection frequencies are as follows:

**General Waste:** 3 x 240L MGBs collected twice weekly

**Recycling:** 3 x 240L MGBs collected twice weekly

Bin sizes, quantities, and/or collection frequencies may be modified by the building manager once the proposed development is operational. Building management will be required to negotiate any changes to bins or collections with the collection service provider. Seasonal peak periods such as public and school holidays should also be considered.

### 5.3 RETAIL WASTE DISPOSAL PROCEDURES

The retail tenancies will be responsible for their back of house waste management bins during daily operations.

On completion of each trading day or as required, nominated staff or contracted cleaners will transport all general waste and recyclables to the Retail Bin Room and place into the appropriate collection bins.

### 5.4 RETAIL WASTE COLLECTION PROCEDURES

A private waste collection contractor will be engaged to service the retail waste and recycling bins per an agreed schedule. On the day of service, a private waste collection vehicle will park on Barrenjoey Rd. The bins will be collected directly from the Retail Waste Room via a collect and return arrangement.

### 5.5 OTHER WASTE MANAGEMENT CONSIDERATIONS

Based on the types of tenancies anticipated for this development, the following waste management practices are recommended.

#### 5.5.1 BATHROOMS

Washroom facilities should be supplied with collection bins for paper towels (if used). Sanitary bins for female restroom facilities must also be arranged with an appropriate contractor.

#### 5.5.2 LIQUID WASTE

Liquid wastes such cleaning products, chemicals, paints, and cooking oil, etc., will be stored in a secure space that is bunded and drained to a grease trap in accordance with State government authorities and legislation.

#### 5.5.3 PROBLEM WASTE

The building manager is responsible for making arrangements for the disposal and recycling of problem waste streams with an appropriate contractor. Problem wastes cannot be placed in general waste as they can have adverse impacts to human health and the environment if disposed of in landfill. Retail and Commercial tenants will need to liaise with the building manager when disposing of problem waste streams.

Problem waste streams include:

- Chemical Waste
- Liquid wastes
- Toner cartridges
- Lightbulbs
- eWaste
- Batteries

## 6 STAKEHOLDER ROLES & RESPONSIBILITIES

The following table demonstrates the primary roles and responsibilities of the respective stakeholders:

Table 2: Stakeholder Roles and Responsibilities

Roles	Responsibilities
Strata or Management	<ul style="list-style-type: none"> <li>Ensuring that all waste service providers submit monthly reports on all equipment movements and waste quantities/weights;</li> <li>Organising internal waste audits/visual assessments on a regular basis</li> <li>Purchasing any on-going waste management equipment or maintenance of equipment once building is operational; and</li> <li>Managing any non-compliances/complaints reported through waste audits.</li> </ul>
Waste Caretaker	<ul style="list-style-type: none"> <li>Coordinating general waste and recycling collections;</li> <li>Cleaning and transporting bins as required;</li> <li>Organising replacement or maintenance requirements for bins;</li> <li>Organising, maintaining and cleaning the waste holding area;</li> <li>Organising bulky goods collection when required</li> <li>Investigating and ensuring prompt clean-up of illegally dumped waste materials.</li> <li>Preventing storm water pollution by taking necessary precautions (securing bin rooms, preventing overfilling of bins)</li> <li>Abiding by all relevant WH&amp;S legislation, regulations, and guidelines;</li> <li>Providing staff/contractors with equipment manuals, training, health and safety procedures, risk assessments, and PPE to control hazards associated with all waste management;</li> <li>Assessing any manual handling risks and preparing a manual handling control plan for waste and bin transfers;</li> <li>Ensuring site safety for residents, children, visitors, staff and contractors; and</li> <li>Ensuring effective signage, communication and education is provided to occupants, tenants, maintenance staff, and cleaning contractors.</li> </ul>
Residents	<ul style="list-style-type: none"> <li>Dispose of all general waste and recycling in the allocated MGBs provided;</li> <li>Ensure adequate separation of general waste and recycling; and</li> <li>Compliance with the provisions of Council and the OWMP.</li> </ul>
Retail/Commercial Tenants	<ul style="list-style-type: none"> <li>Managing the back of house storage of generated waste and recycling during daily operation.</li> <li>Correctly separating waste and recycling streams. Including bagging general waste and ensuring recyclables are not bagged.</li> <li>Flattening cardboard within the recycling bin.</li> <li>If required, making arrangements for storing used and unused cooking oil in a bunded storage area,</li> <li>Organizing grease interceptor trap servicing,</li> <li>Ensure dry basket arrestors are provided to the floor wastes in the food preparation, and</li> <li>Ensuring the suitable storage for chemicals, pesticides and cleaning products waste back of house.</li> </ul>
Waste Collection Contractor	<ul style="list-style-type: none"> <li>Provide a reliable and appropriate waste collection service;</li> <li>Provide feedback to building managers/residents regarding contamination of recyclables; and</li> <li>Work with building managers to customise waste systems where possible.</li> </ul>
Gardening/Landscaping Contractor	<ul style="list-style-type: none"> <li>Removal of all garden organic waste generated during gardening maintenance activities for recycling at an offsite location.</li> </ul>
Developer	<ul style="list-style-type: none"> <li>Purchasing all equipment required to implement this OWMP prior to the occupation of the building to be provided to the strata.</li> </ul>

## 7 SOURCE SEPARATION

Better practice waste management includes the avoidance, reuse, and recovery of unwanted items, which can be achieved through source separation. The table below outlines what is typically included in various waste streams and how they can be managed. Refer to your local council for a list of accepted materials. Planet Ark can be accessed online to find other facilities that recover unwanted items.

Table 3: Operational Waste Streams

Waste Stream	Description	Typical Destination	Waste Stream Management
<b>General Waste</b>	The remaining portion of the waste stream that is not recovered for reuse, processing, or recycling. May include soft plastics, food scraps, polystyrene, etc.	Landfill	Waste should be bagged before placing in the designated waste bins.
<b>Paper and Cardboard Recyclables</b>	Cardboard and paper products are recyclable materials that can be re-processed into new products.	Resource Recovery Centre	Cardboard should be flattened before placing in the designated cardboard bin.
<b>Commingled Recyclables</b>	A mixture of items that are commonly recycled usually segregated through a MRF. Typically include food and beverage containers (e.g. aluminium, glass, steel, hard plastics, cartons).	Materials Recovery Facility (MRF)	Commingled recyclables must not be bagged, and instead should be placed loosely in the designated recycling bins.
<b>Green Waste</b>	Green waste consists of unwanted organic materials that are easily biodegradable and/or compostable (e.g. lawn clippings, branches)	Resource Recovery Centre	Landscape Maintenance Contractors will remove the green waste from site during scheduled maintenance.
<b>Electronic Waste</b>	Discarded e-waste, electronic components and materials such as computers, mobile phones, keyboards, etc.	Resource Recovery Centre	Building manager arranges collection for e-waste recycling as needed by residents. Commercial tenants arrange for recycling of their own e-waste.
<b>Bulky Items</b>	Items that are too large to place into general rubbish collection. This includes disused and/or broken furniture, mattresses, white goods, etc.	Resource Recovery Centre or Landfill	Residents liaise with building manager to store in Bulky Goods Room. Building manager arranges with Council for removal.
<b>Other</b>	Other recyclable items that require special recovery may include ink cartridges, batteries, chemical waste, fluorescent tubes, etc.	Resource Recovery Facility	Building manager arranges collection by appropriate recycling services when required.

## 8 EDUCATION

Educational materials encouraging correct separation of general waste and recyclables must be provided to each resident. This should include the correct disposal process for bulky waste such as old furniture, large discarded items, and other materials including electronic and chemical wastes. It is recommended that the building caretaker provides information in multiple languages to support correct behaviours, and to minimise the possibility of contamination in communal waste bins.

### 8.1 SIGNAGE

Signage and education are essential components to support best practice waste management including resource recovery, source separation, and diversion of waste from landfill.

Signage should include:

- Clear and correctly labelled waste and recycling bins,
- Instructions for separating and disposing of waste items. Different languages should be considered,
- Locations of, and directions to, the waste storage areas with directional signs, arrows, or lines,
- The identification of all hazards or potential dangers associated with the waste facilities, and
- Emergency contact information should there be issues with the waste systems or services in the building.

The building manager is responsible for waste room signage including safety signage. Appropriate signage must be prominently displayed on doors, walls and above all bins, clearly stating what type of waste or recyclables is to be placed in each bin.

All signage should conform to the relevant Australian Standards.

### 8.2 POLLUTION PREVENTION

Building management shall be responsible for the following to minimise dispersion of site litter and prevent stormwater pollution to avoid impact to the environment and local amenity:

- Promoting adequate waste disposal into the bins
- Securing all bin rooms (whilst affording access to staff/contractors)
- Prevent overfilling of bins, keep all bin lids closed and bungs leak-free
- Taking action to prevent dumping or unauthorised use of waste areas
- Require collection contractor/s to clean up any spillage when clearing bins



## 9 WASTE ROOMS

The areas allocated for waste storage and collection areas are detailed in the table below, and are estimates only. Final areas will depend on room and bin layouts.

Table 4: Waste Room Areas

Level	Waste Room Type	Equipment and MGBs	Estimated Area Required (m <sup>2</sup> )	Actual Area Provided (m <sup>2</sup> )
G	Residential Communal Bin Room	2x 240L MGBs (waste) 3x 240L MGBs (paper/cardboard recycling) 3x 240L MGBs (co-mingled recycling)	>10	15
G	Residential Collection Area	2x 240L MGBs (waste) 3x 240L MGBs (paper/cardboard recycling) 3x 240L MGBs (co-mingled recycling)	>7	>7
G	Retail Bin Room	3x 240L MGBs (waste) 3x 240L MGBs (recycling)	>8	17

EFRS recommends bins sizes, collection frequencies and/or equipment for best practice waste management at this site, however EFRS also acknowledges there are a range of other suitable options that may alter waste room requirements (e.g. floor area, accessibility, head height, etc.)

The waste room areas have been calculated based on equipment requirements and/or bin dimensions with an additional 70% of bin GFA factored in for manoeuvrability. The following table provides further waste room requirements.

Table 5: Waste Room Requirements

Waste Room Type	Waste Room Requirements
Residential Communal Bin Room	<ul style="list-style-type: none"> <li>• Bins should be arranged so that all bins are accessible. Bins are not be placed in front another or in such away as to restrict access to the other bins for use.</li> <li>• Doorway should be a minimum of 1000 wide</li> </ul>
Retail Bin Room	<ul style="list-style-type: none"> <li>• In order to ensure staff safety, all bins should be arranged so they can be accessed without moving another bin.</li> <li>• Doorway should be a minimum of 1000 wide</li> </ul>

## 10 BIN MOVING PATHS

The building caretaker is responsible for the transportation of bins as required from their designated operational locations to the bin holding room as required and returning them once emptied to resume operational use.

Transfer of bins should minimise manual handling where possible, as bins become heavy when full. The building manager must assess manual handling risks and provide any relevant documentation to key personnel.

The routes along the bin moving path should;

- Allow for a continuous route that is wholly within the property boundary.
- Be free from obstruction and obstacles such as steps and kerbs.
- Be constructed of solid materials with a non-slip surface
- Be a minimum of 300mm wider than the largest bin used onsite.
- If bins are moved manually, the route must not exceed a grade of 1:14.
- If a bin moving device is used, the route cannot exceed the maximum operating grade of the device. This is typically a grade of 1:4, however this will vary depending on the model of bin moving device acquired for the site.

## 11 CONSTRUCTION REQUIREMENTS

Waste room construction must comply with the minimum standards as outlined in the *Pittwater Development Control Plan*, in order to minimise odours, deter vermin, protect surrounding areas, and make it a user-friendly and safe area.

The *NSW Better Practice Guide for Resource Recovery in Residential Developments (2019)* also states that better practice bin storage areas should achieve more than the minimum compliance requirements, which are as follows:

- Ensuring BCA compliance, including ventilation. Where required, ventilation system must comply with AS1668.4-2012 The use of ventilation and air conditioning in buildings.
- Ensuring storage areas are well lit (sensor lighting preferred) and have lighting available 24 hours a day.
- Provision of bin washing facilities, including taps for hot and cold water provided through a centralised mixing valve. The taps must be protected from bins and be located where they can be easily accessed even when the area is at bin capacity.
- Floor constructed of concrete at least 75mm thick.
- Floor graded so that any water is directed to a sewer authority approved drainage connection to ensure washing bins and/or waste storage areas do not discharge flow into the stormwater drain.
- Provision of smooth, cleanable and durable floor and wall surfaces that extend up the wall to a height equivalent to any bins held in the area.
- Ensuring ceilings are finished with a smooth-faced non-absorbent material capable of being cleaned.
- All surfaces (walls, ceiling and floors) finished in a light colour.

### 11.1 ADDITIONAL CONSIDERATIONS

- Waste room floor to be sealed with a two-pack epoxy;
- All corners coved and sealed 100mm up, this is to eliminate build-up of dirt;
- Tap height and light switch height of 1.6m;
- Storm water access preventatives (grate);
- All walls painted with light colour and washable paint;
- Equipment electric outlets to be installed 1700mm above finished floor level;
- Optional automatic odour and pest control system installed
- If 660L or 1100L bins are utilised, 2 x 820mm (minimum) double-doors must be used;
- All personnel doors are hinged, lockable and self-closing;
- Conform to the Building Code of Australia, Australian standards and local laws; and
- Childproofing and public/operator safety shall be assessed and ensured
- Waste and recycling rooms must have their own exhaust ventilation system either;
  - Mechanically - exhausting at a rate of 5L/m<sup>2</sup> floor area, with a minimum rate of 100L/s minimum; Mechanical exhaust systems shall comply with AS1668.4.2012 and not cause any inconvenience, noise or odour problem or
  - Naturally - permanent, unobstructed, and opening direct to the external air, not less than one-twentieth (1/20) of the floor area.

## 12 USEFUL CONTACTS

EFRS does not warrant or make representation for goods or services provided by suppliers.

### PRIVATE WASTE COLLECTION PROVIDER

---

Capital City Waste Services	Ph: 02 9599 9999	E: <a href="mailto:service@ccws.net.au">service@ccws.net.au</a>
Remondis	Ph: 02 9032 7100	
Suez Environmental	Ph: 13 13 35	
Wastewise NSW	Ph: 1300 550 408	E: <a href="mailto:admin@wastewise.com.au">admin@wastewise.com.au</a>

### BIN MOVING DEVICE SUPPLIERS

---

Electrodrive	Ph: 1800 333 002	E: <a href="mailto:sales@electrodrive.com.au">sales@electrodrive.com.au</a>
Sitecraft	Ph: 1300 363 152	E: <a href="mailto:sales@sitecraft.com.au">sales@sitecraft.com.au</a>
Spacepac	Ph: 1300 763 444	

### ORGANIC DIGESTERS AND DEHYDRATORS

---

Closed Loop	Ph: 1300 762 166	
Orca		E: <a href="mailto:contact.australia@feedtheorca.com">contact.australia@feedtheorca.com</a>
Soil Food	Ph: 1300 556 628	
Waste Master	Ph: 1800 614 272	E: <a href="mailto:hello@wastemasterpacific.com.au">hello@wastemasterpacific.com.au</a>

### COOKING OIL CONTAINERS AND DISPOSAL

---

Auscol	Ph: 1800 629 476	E: <a href="mailto:sales@auscol.com">sales@auscol.com</a>
--------	------------------	---

### ODOUR CONTROL

---

Purifying Solutions	Ph: 1300 636 877	E: <a href="mailto:sales@purifyingsolutions.com.au">sales@purifyingsolutions.com.au</a>
---------------------	------------------	---

### SOURCE SPERATION BINS

---

Source Separation Systems	Ph: 1300 739 913	E: <a href="mailto:info@sourceseparationsystems.com.au">info@sourceseparationsystems.com.au</a>
---------------------------	------------------	---

### MOBILE GARBAGE BINS, BULK BINS AND BIN EQUIPMENT

---

SULO	Ph: 1300 364 388	E: <a href="mailto:sales@sulo.com.au">sales@sulo.com.au</a>
OTTO Australia	Ph: 02 9153 6999	

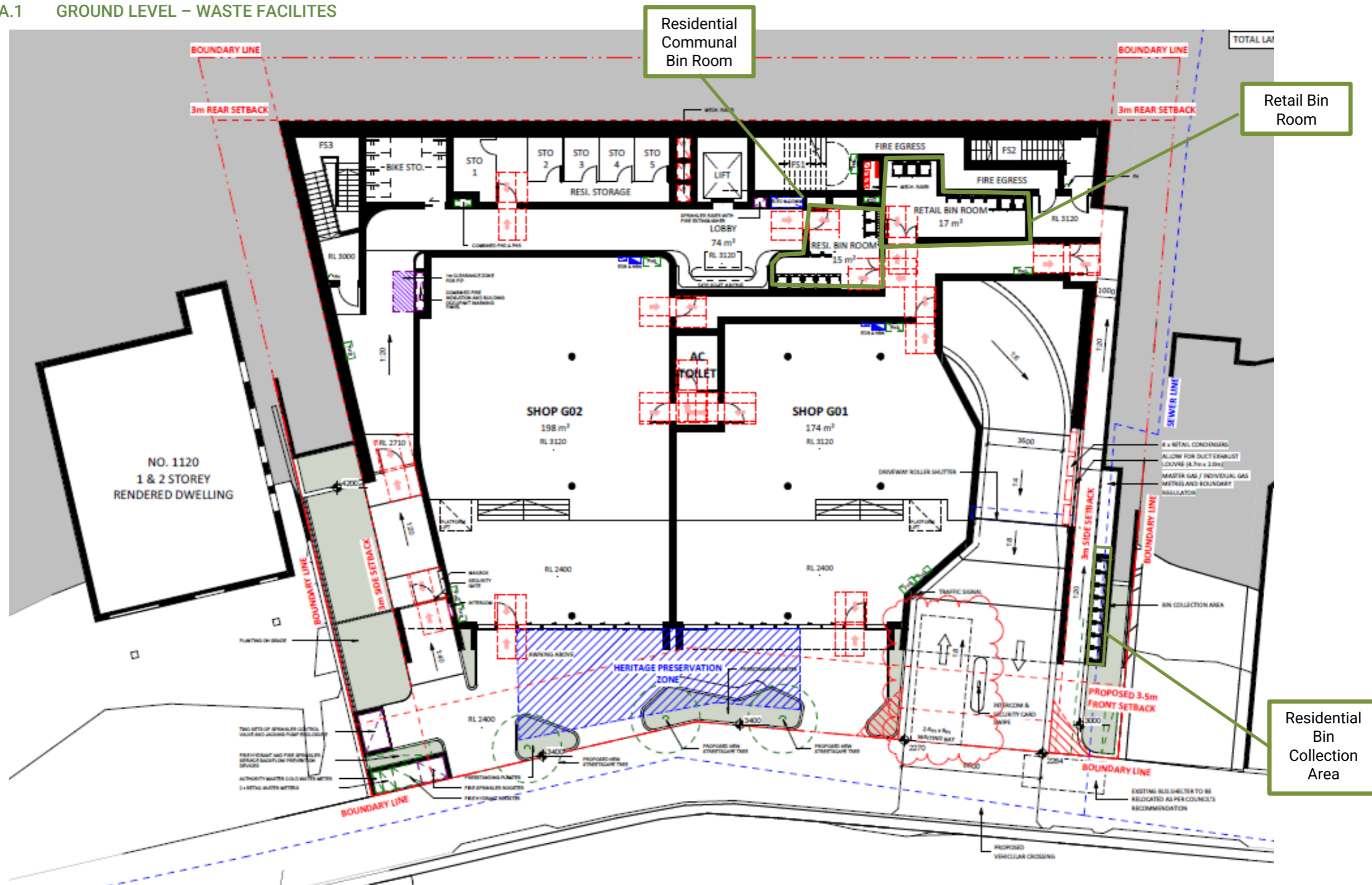
### CHUTES, COMPACTORS AND EDIVERTER SYSTEMS

---

Elephants Foot Recycling Solutions	Ph: 1800 025 073	E: <a href="mailto:info@elephantsfoot.com.au">info@elephantsfoot.com.au</a>
------------------------------------	------------------	---

## APPENDIX A: ARCHITECTURAL PLANS

APPENDIX: A.1 GROUND LEVEL – WASTE FACILITIES



Source: TKA, 1112-1116 Barrenjoey Rd Palm Beach, Drawing No A0100, Rev J Sept2024 – Ground Floor Plan

## APPENDIX B: PRIMARY WASTE MANAGEMENT PROVISIONS

## APPENDIX: B.1 TYPICAL BIN SPECIFICATIONS


### Mobile bins

Mobile bins come in a variety of sizes and are designed for lifting and emptying by purpose-built equipment.

Mobile bins with capacities of up to 1700L must comply with *AS4123.6-2006 Mobile waste containers* which specifies standard sizes and sets out the colour designations for the bodies and lids of mobile waste containers indicating the type of materials they are used to collect.

The most common bin sizes are provided below, although not all sizes are shown. The dimensions are a guide only and differ slightly between manufacturers. Some bins have flat or domed lids and are used with different lifting devices. Refer to *AS4123.6-2006* for further details.

**Table G1.1: Average dimension ranges for two-wheel mobile bins**




Bin capacity	80L	120L	140L	240L	360L
Height (mm)	870	940	1065	1080	1100
Depth (mm)	530	530	540	735	820
Width (mm)	450	485	500	580	600
Approximate footprint (m <sup>2</sup> )	0.24	0.26–0.33	0.27-0.33	0.41–0.43	0.49
Approximate weight (kg)	8.5	9.5	10.4	15.5	23
Approximate maximum load (kg)	32	48	56	96	Not known

**Wheelie bin**

Sources include Sulo, Single Waste, Cleanaway, SUEZ, just wheelie bins and Perth Waste for two-wheel mobile bins

**Table G1.2: Average dimension ranges for four-wheel bulk bins**



Bin capacity	660L	770L	1100L	1300L	1700L
Height (mm)	1250	1425	1470	1480	1470
Depth (mm)	850	1100	1245	1250	1250
Width (mm)	1370	1370	1370	1770	1770
Approx footprint (m <sup>2</sup> )	0.86–1.16	1.51	1.33–1.74	2.21	2.21
Approx weight (kg)	45	Not known	65	Not known	Not known
Approx maximum load (kg)	310	Not known	440	Not known	Not known

**Dome or flat lid container**

Sources include Sulo, Signal Waste, Cleanaway, SUEZ, Just Wheelie Bins and Perth Waste

Source: *Better Practice Guide For Resource Recovery In Residential Developments 2019*, NSW Environmental Protection Authority



## APPENDIX: B.2 SIGNAGE FOR WASTE AND RECYCLING BINS

### Waste signs

Signs and educational materials perform several functions including:

- informing residents why it is important to recover resources and protect the environment
- providing clear instructions on how to use the bins and services provided
- alerting people to any dangers or hazards within the bin storage areas.

All waste, recycling and organic bins should be Australian Standard colours and clearly and correctly labelled, such as by a sticker on the lid and/or the body of the bin.

Communal bin storage areas should be clearly signposted with signs outlining how to correctly separate waste into the bins provided. The local council responsible for waste services may be a good source of signs and posters and can advise on what signs are suitable.

Information on who to contact to find out more about the recycling and/or other resource recovery services in the building should also be displayed in communal areas, such as on a noticeboard.

The Planet Ark website also has resources available free of charge for use by businesses and councils. These signs can be found at [businessrecycling.com.au/research/signage.cfm](http://businessrecycling.com.au/research/signage.cfm)

Figure I1.1: Examples of waste wall posters (EPA supplied)



Figure I1.2: Examples of bin lid stickers (EPA supplied)



Source: *Better Practice Guide For Resource Recovery In Residential Developments 2019*, NSW Environmental Protection Authority

## Problem waste signs

The EPA has also produced a range of images and signs that can be used for problem wastes, such as fluoro globes and tubes, household and car batteries, e-waste and smoke detectors. To access these resources, contact the NSW EPA. Some examples are shown below.

Figure I2.1: Problem waste signs



## Safety signs

The use of safety signs for waste resource recovery rooms must comply with *AS1319 Safety signs for occupational environments*. Safety signs must be used to regulate and control safety related to behaviour, warn of hazards and provide emergency information, including fire protection information. Suitable signs should be decided for each development as required.

Figure I3.1: Example safety signs



Source: *Better Practice Guide For Resource Recovery In Residential Developments 2019*, NSW Environmental Protection Authority

## APPENDIX: B.3 TYPICAL COLLECTION VEHICLE INFORMATION

### General

Appropriate heavy rigid vehicle standards should be incorporated into the road and street designs in new developments where onsite collections are proposed. Road and street designs must comply with relevant Acts, regulations, guidelines, and codes administered by Austroads, Standards Australia, NSW Roads and Maritime Services, WorkSafe NSW and any local council traffic requirements.

Applicants and building designers should consult with councils and other relevant authorities before designing new roads or streets and access points for waste collection vehicles to establish specific design requirements.

**Table H4.1: Australian Standards for turning circles for medium and heavy rigid class vehicles**

Vehicle class	Overall length (m)	Design width (m)	Design turning radius (m)	Swept circle (m)	Clearance (travel) height (m)
Medium rigid vehicle	8.80	2.5	10.0	21.6	4.5
Heavy rigid vehicle	12.5	2.5	12.5	27.8	4.5

Source: *Better Practice Guide For Resource Recovery In Residential Developments 2019*, NSW Environmental Protection Authority

### Large collection vehicles

Waste collection vehicles may be side-loading, rear-loading, front-lift-loading, hook or crane lift trucks. Vehicle dimensions vary by collection service, manufacturer, make and model. It is not possible to provide definitive dimensions, so architects and developers should consult with the local council and/or contractors.

The following characteristics represent typical collection vehicles and are provided for guidance only. Reference to *AS2890.2 Parking facilities: off-street commercial vehicle facilities* for detailed requirements, including vehicle dimensions, is recommended.

**Table B2.1: Collection vehicle dimensions**

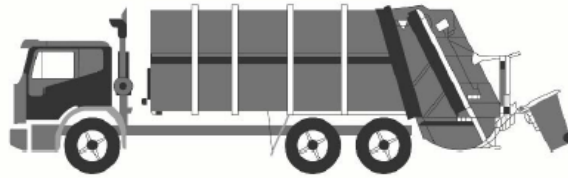
Vehicle type	Rear-loading	Side-loading*	Front-lift-loading	Hook truck	Crane truck
Length overall (m)	10.5	9.6	11.8	10.0	10.0
Width overall (m)	2.5	2.5	2.5	3.0	2.5
Travel height (m)	3.9	3.6	4.8	4.7	3.8
Operational height for loading (m)	3.9	4.2	6.5	3.0	8.75
Vehicle tare weight (t)	13.1	11.8	16.7	13.0	13.0
Maximum payload (t)	10.0	10.8	11.0	14.5	9.5
Turning circle (m)	25.0	21.4	25.0	25.0	18

\* The maximum reach of a side arm is 3 m.

Sources: JJ Richards, SUEZ, MacDonald Johnson, Cleanaway, Garwood, Ros Roca, Bingo and Edbro. Figures shown represent the maximum dimensions for each vehicle type.

### Rear-loading collection vehicles

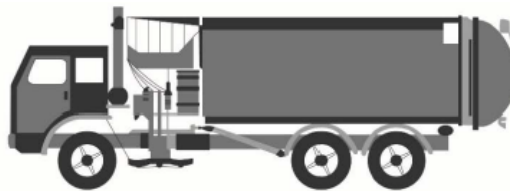
These vehicles are commonly used for domestic waste collections from MUDs and RFBs and sometimes for recycling. They can be used to collect waste stored in mobile bins or bulk bins, particularly where bins are not presented at the kerbside. They are also used for collecting bulky waste.



Rear-loading waste collection vehicle

### Side-loading collection vehicles

This is the most commonly used vehicle for domestic waste, recycling and organics collections. It is only suitable for collecting mobile bins up to 360L in capacity.



Side-loading waste collection vehicle

### Front-lift-loading collection vehicles

These vehicles are commonly used for collecting commercial and industrial waste. They can only collect specially designed front-lift bulk bins and not mobile bins.



Front-lift-loading waste collection vehicle

### Small collection vehicles

Typically, councils and their contractors operate with large collection vehicles (heavy rigid class vehicles) because they carry greater payloads and allow for more cost-effective collection services. Some councils, or their contractors, may have smaller collection vehicles in their fleet. Early discussion with the council is important to confirm this, but it should not be assumed that the council will have access to small collection vehicles.

The waste management systems and the location of the collection point should always be designed so that the council can provide the standard domestic waste service.

Source: *Better Practice Guide For Resource Recovery In Residential Developments 2019*, NSW Environmental Protection Authority

## APPENDIX: B.4 TYPICAL BIN MOVERS

### Battery powered tug with a 1 or 2 tonne tow capacity



#### Features at a glance

---

One tonne (Evo 1T) or two tonne (Evo 2T) tow capacity

---

Auto latching hitch

---

Three speed motor with emergency stop

---

#### Typical applications

The Tug Evo is suitable for airports, factories, warehouses, apartment buildings or large facilities. This powered tug is also suitable for transporting medical carts around hospitals or moving heavy specialist equipment.

#### Features:

- 1 or 2 tonne tow capacity of inclines up to 6 degrees
- 500kg tow capacity if inclines up to 14 degrees
- CE Compliant
- 5 km/h max speed
- 2 x 12V 42Ah MK-gel batteries with 24V smart charger.
- Powerful transaxle

#### Safety Features:

- Intuitive control with standard automatic safety brake, forward and reverse drive.
- Emergency stop button.
- Emergency back-off button

Source: <http://www.electrodrive.com.au/products/tugs/tug-evo.aspx>

## APPENDIX C: SECONDARY WASTE MANAGEMENT PROVISIONS

**APPENDIX: C.1 TYPICAL COOKING OIL CONTAINERS**



**Drums 205L**



**Pour in Bulk Tank**

[View Brochure](#)



**Oil Kaddy System**

[View Brochure](#)



Eco System 700L fixed

Eco System 310L mobile

**Eco Systems**



**Direct-Connect to Fryer**

Source: <http://www.auscol.com/services/collection-systems/>

## APPENDIX: C.2 TYPICAL SOURCE SEPARATION BINS



Source: <https://www.sourceseparationsystems.com.au/>