

Site analysis and vegetation overview

Landscape plan  
51 Redman Road Dee Why

Issue: A DRAFT 4.12.19  
Issue: B DA plan 6.12.19

Landscape DA Plan	
Drawing: AD/TT	Checked by: AD
Andrew Davies	Job: R23 191128
Date: 6.12.19	Issue: B
Scale: 1to200 A3	
Approx	1/4



27 Turimetta Street, Mona Vale NSW 2103  
andrewdaves@banksiadesigngroup.com.au  
abn : 17 986 316 620  
www.banksiadesigngroup.com.au 0414 2900 57

andrew daves.  
LANDSCAPE DESIGN

To be read in conjunction with  
Sand B Arborist report July 2019





Street view to looking north



Street view seen from no 53 driveway



Street view to Nw corner



View to rear boundary note Conifer screen hedge to eastern boundary



View to rear of existing house with Bangalow palms and other trees



Main street scape Lophostemon and Callistemon spp street trees

Site images

Landscape plan  
51 Redman Road Dee Why

Issue: A DRAFT 4.12.19  
Issue: B DA plan 6.12.19

Landscape DA Plan

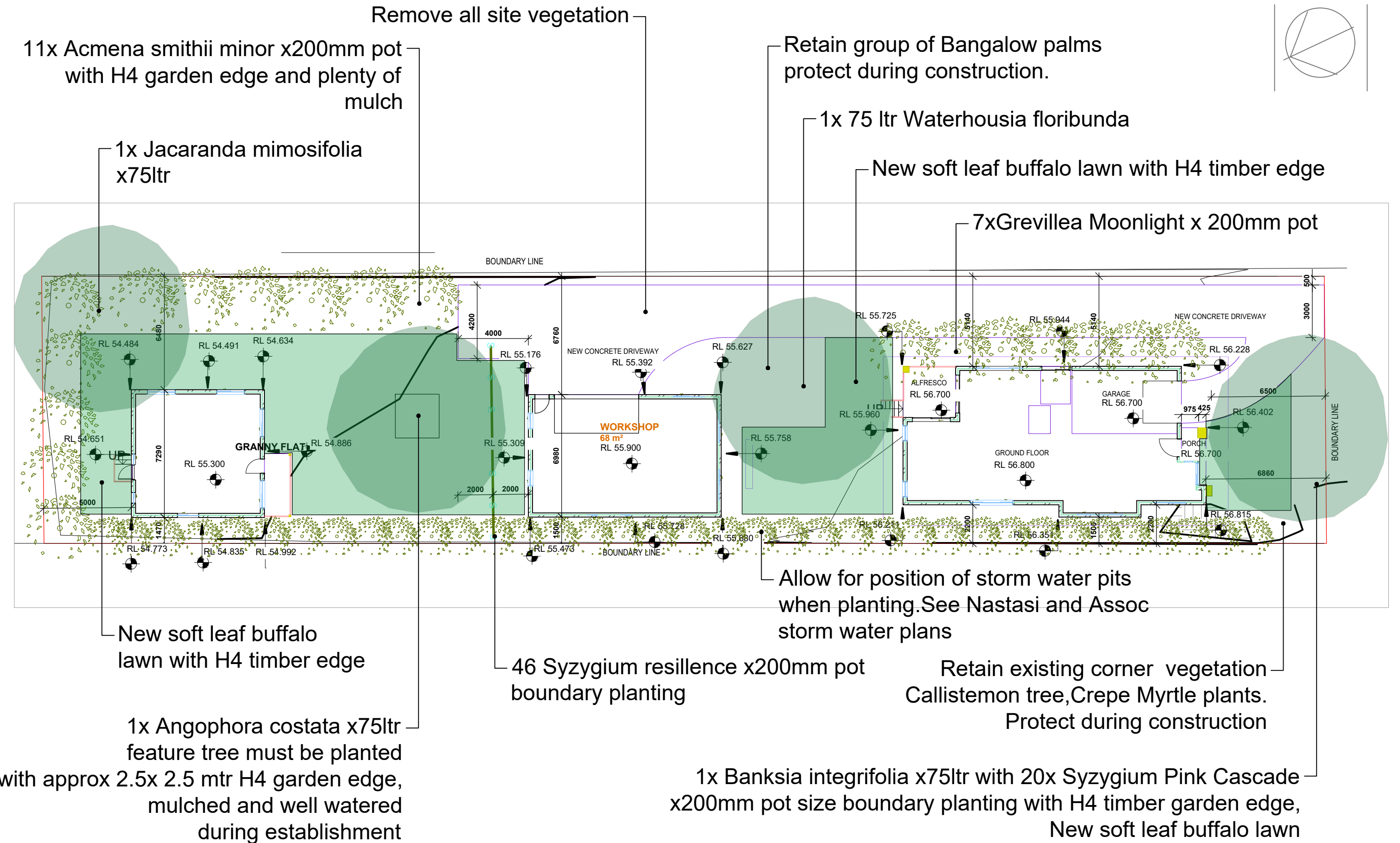
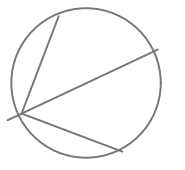
Drawing: AD/TT	Checked by: AD
Andrew Davies	Job: R23 191128
Date 6.12.19	Issue: B
Scale: NTSC Approx	2/4



27 Turimetta Street, Mona Vale NSW 2103  
andrewdaves@banksiadesigngroup.com.au  
abn : 17 986 316 620  
www.banksiadesigngroup.com.au 0414 2900 57

andrew daves.  
LANDSCAPE DESIGN





Planting Plan

Landscape plan  
51 Redman Road Dee Why

Issue: A DRAFT 4.12.19  
Issue: B DA plan 6.12.19

Landscape DA Plan

Drawing: AD/TT	Checked by: AD
Andrew Davies	Job: R23 191128
Date 6.12.19	Issue: B
Scale: 1to200 A3	3/4
Approx	

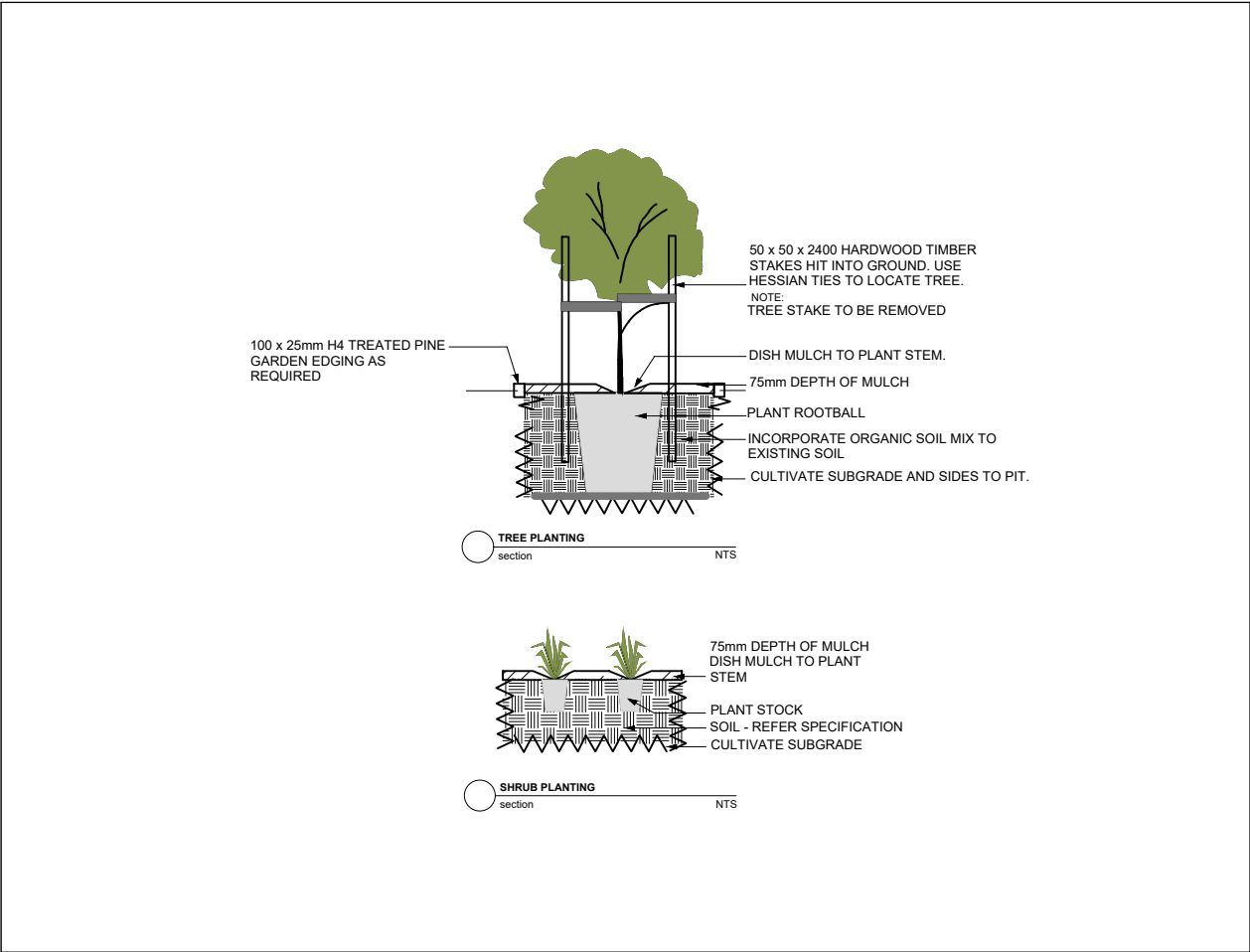


27 Turimetta Street, Mona Vale NSW 2103  
andrewdaves@banksiadesigngroup.com.au  
abn : 17 986 316 620  
www.banksiadesigngroup.com.au 0414 2900 57

andrew daves.  
LANDSCAPE DESIGN

Plant schedule

Angophora costata	Angophora tree	250	10x10plus	1
Acmena smithii Minor	Lilly pilly	200	.6x1.2	11
Banksia integrifolia	Coastal Banksia	75ltr	9x10	1
Grevillea honey gem	white flowering Grevillea	200	3.0x4.0	7
Jacaranda mimosifolia	Jacaranda	75ltr	7x10	1
Syzygium australe Resillence	Lilly pilly hedge	200	.8x2.5	46
Syzygium Pink Cascade	Pink flowering Lillypilly	200	1.5x2.0	20
Waterhousia floribunda	Waterhousia	75ltr	8x10	1



Planting detail

Plant Schedule and Specification

LANDSCAPE GENERAL SPECIFICATION AND NOTES

All landscape works and material supply, to be in accordance with AS 4000, LCA guidelines and Occupational Health & Safety standards.

All landscape works to comply with relevant Australian Standards and relevant Building Codes of Australia

All dimensions and locations to be checked on site and confirmed by landscape site supervisor before commencement of works

Do not scale from drawings. Dimensions take preference

Plant schedule and quantities to be used as guide only and to be confirmed by contractor before final purchase of plants

Final plant positions to be determined on site (by Landscape Supervisor).

**DESIGN LIABILITY NOTE:** No liability is accepted by these plans. Contractors are required to check ALL construction facts, figures and relevant information pertaining to the soft and hard scape works to be performed. Should anomalies occur, the designer or a representative of Liberty Landscapes Pty Ltd must be contacted and given due notice and sufficient documentation and, if required, due compensation to allow for adjustment/s to plans, documentation etc

**REMOVAL OF NOXIOUS WEEDS:** As a duty of care exists for all contractors: if a noxious weed exists onsite it should be removed after discussion with the owner or site supervisor.

**ENVIRONMENTAL MANAGEMENT AND SEDIMENT CONTROL:** All Landscape works to adhere with Environmental Legislation outlined in the *Protection of the environment operations act 1997*, by the EPA NSW.

It is highly recommended to use Dial Before You Dig services – contact for information at [www.dialbeforeyoudig.com.au](http://www.dialbeforeyoudig.com.au) or call 1100.

**TREES:** All trees to be staked: use 2 x hardwood 50x50mm stakes and hessian webbing. See detail

**TURF:** 1. Install turf rolls diagonal to the fall of the land. Roll turf following installation, and water as required. Use soft leaf Buffalo sp

2. 50 - 70mm topsoil underlay to be used in ground preparation .Note check ph after construction and before laying turf, adjust as required for optimum plant growth

SOIL:

1. Contractor is to check soil pH levels, two weeks prior to planting, and allow for reasonable adjustments, using lime or similar to ensure plant viability

2. Break up existing ground surface using mattock, rotary hoe or tractor tine as required

3. Topsoil sandy loam 50mm depth to turf areas.

4. Where necessary mound soil to assist in soil drainage to avoid root rot and poor plant growth

5. Incorporate ¼ tonne organic soil mix into holes where trees are planted, using recycled leaf litter as mulch

6. Soil Quality to be Australian Native Landscape Standard

7. Supply and Install 'Garden Mix' to all garden beds incorporated into the top 300mm of existing site profile. Note use rotary hoe as required do not just place on top of ground

**MULCH:** Mulch to be installed to all planter beds to a depth of 75mm. Mulch type to be Recycled Leaf Litter ideally from local tree company based on more native plants than general exotics.

**EDGING:** See plan for locations. Top edge higher than lawn to allow garden beds to be aerated & mounded

**DRAINAGE:** fall paving to lawn area

Install Everhard drainage pit to front of house.Liaise with Rawson Homes re connection to stormwater pipes

**LIGHTING:** to future plans TBA

**MAINTENANCE:** New plants to receive regular deep irrigation for a minimum 12 weeks establishment period. Seasonal pruning, fertilising and pest and disease checks to be carried out. Advice by qualified horticulturalist recommended

**IRRIGATION:** Drip irrigation TBA

Drawing: AD/TT	Checked by: AD
Andrew Davies	Job:R23 191128
Date : 6.12.19	Issue : B
Scale:NTSC	4/4