

GENERAL NOTES:

- ALL WORKS TO COMPLY WITH BUILDING CODE OF AUSTRALIA, REQUIREMENTS OF RELEVANT STATUTORY AUTHORITIES / LOCAL GOVERNMENT & RELEVANT AUSTRALIAN BUILDING STANDARDS
- DRAWINGS FOR THE PURPOSES OF DA ONLY (NOT FOR CONSTRUCTION) - FURTHER CONSULTANT/AUTHORITY COORDINATION WILL BE REQUIRED AT OCC STAGES WHICH MAY IMPACT ON DESIGN AND PLANNING LAYOUTS
- ARCHITECTURAL PLANS TO BE READ IN CONJUNCTION WITH CONSULTANTS DRAWINGS, SPECIFICATIONS & REPORTS
- COPYRIGHT OF DESIGN SHOWN HEREON IS RETAINED BY PBD ARCHITECTS AND AUTHORITY IS REQUIRED FOR ANY REPRODUCTION
- AREA SCHEDULES SUPPLIED ARE APPROXIMATE ONLY - FUTURE ALLOWANCE FOR VERTICAL SERVICE DUCTS, STRUCTURAL WALL SYSTEMS AND CONSULTANT INPUT WILL BE REQUIRED

LEGEND:

- AW AWNING
- AH ACCESS HATCH
- AC A/C CONDENSER UNITS
- FH FIRE HYDRANT
- FHR FIRE HOSE REEL
- FS FIRE STAIRS
- GC GARBAGE CHUTE
- HW HIGHLIGHT WINDOW
- MV MECHANICAL RISER TO FUTURE DETAIL
- MB MAILBOX TO FUTURE DETAIL
- R 240L RECYCLING BIN
- SK SKYLIGHT
- ST STORAGE
- HWU HOT WATER UNITS

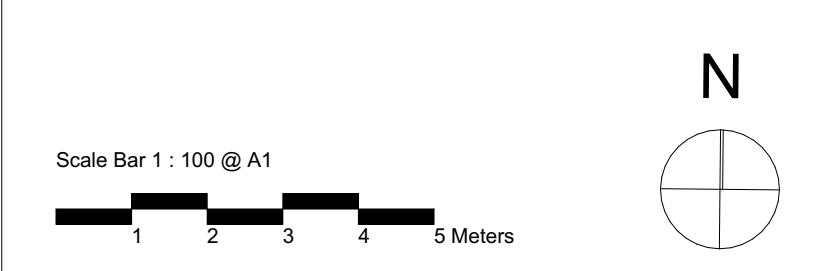
MATERIALS LEGEND:

- AFG ALUMINIUM FRAMED GLAZING
- LV ALUMINIUM ELLIPTICAL FIXED LOUVERS
- AW AWNING (TO FUTURE DETAIL)
- CONC CONCRETE
- FB FACE BRICK
- GB FRAMELESS TOUCHED GLASS BALUSTRADE (TO BCA/AUS STANDARDS)
- MB METAL BALUSTRADE
- MC METAL CLADDING
- FCE METAL FENCING (TO FUTURE SELECTION)
- PC COMPOSITE PANEL CLADDING
- PSK PRIVACY SCREEN (TO FUTURE SELECTION)
- PTX PAINT FINISH TYPE X
- RD ROLLER DOOR
- RP RIVER PEBBLES
- RW RENDERED FINISH/SELECTED PAINT FINISH
- TC TIMBER CLADDING
- VB EXTERNAL VENETIAN BLINDS

LEGEND:

- TO BE DEMOLISHED
- TREES TO BE REMOVED

Issue	Date	Description
A	28/10/2023	DEVELOPMENT APPLICATION
B	7/05/2024	AMENDED DEVELOPMENT APPLICATION
C	29/05/2024	AMENDED DEVELOPMENT APPLICATION
D	12/06/2024	AMENDED DEVELOPMENT APPLICATION



CLIENT:
JAK Newport Pty Ltd

P - 02 9698 8140
E - info@pbdarchitects.com.au
W - pbdarchitects.com.au
Level 2, 52 Albion Street,
Sunny Hills NSW 2100
ABN 36 147 035 550
Notarated Architect:
Paul Buljovic NSW 7768

pbd architects

PROJECT:
RESIDENTIAL FLAT BUILDING - KENZA
54 - 58 BEACONSFIELD STREET NEWPORT NSW

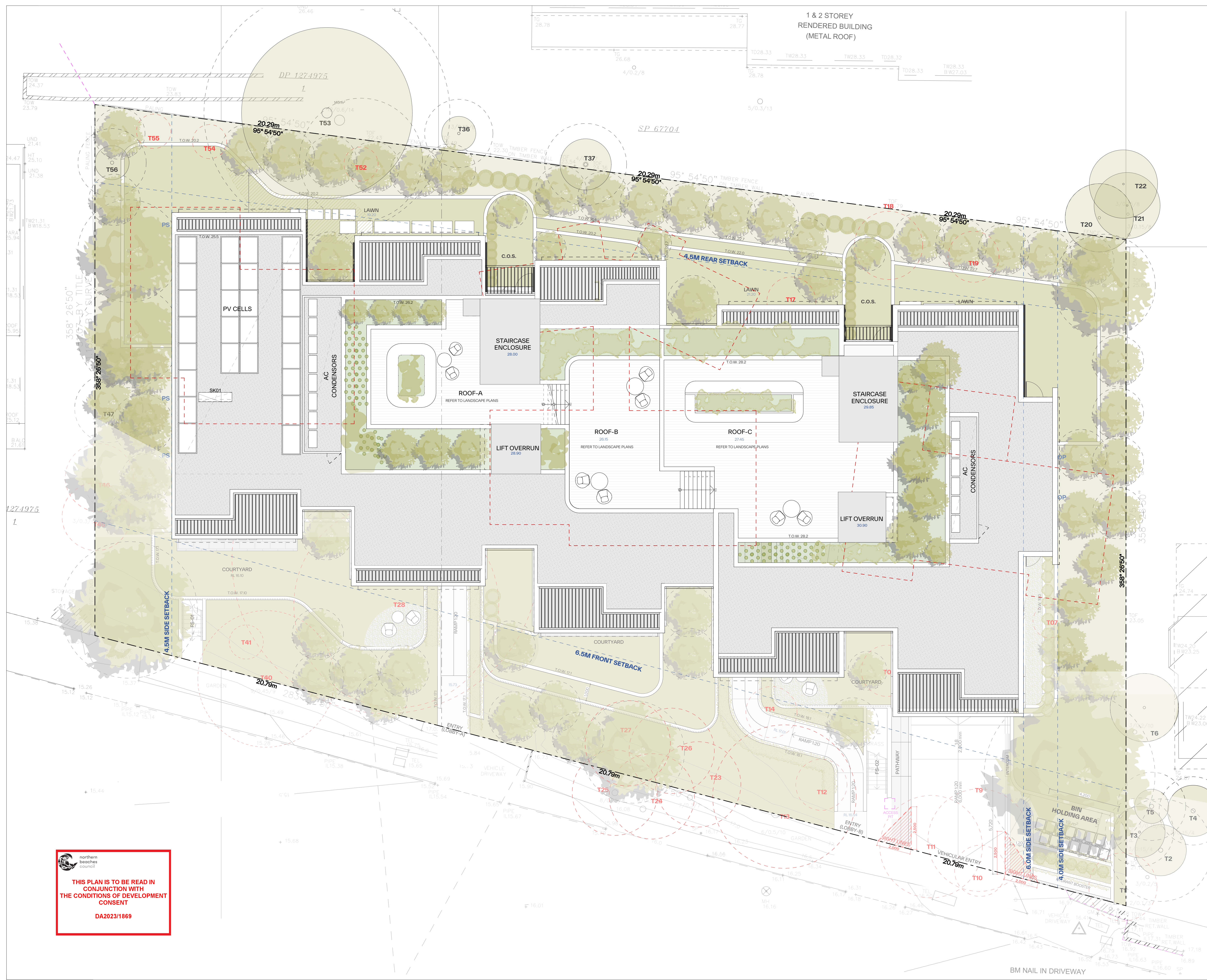
DRAWING TITLE:
Demolition Plan

DRAWING BY: AS	CHECKED BY: KL	DATE: 17/06/2024
SCALE: 1:100@A1	DRAWING NO: DA002	ISSUE: D
PROJECT NO: 2311		

northern beaches council

THIS PLAN IS TO BE READ IN CONJUNCTION WITH THE CONDITIONS OF DEVELOPMENT CONSENT

DA2023/1869



GENERAL NOTES:

- ALL WORKS TO COMPLY WITH BUILDING CODE OF AUSTRALIA, REQUIREMENTS OF RELEVANT STATUTORY AUTHORITIES / LOCAL GOVERNMENT & RELEVANT AUSTRALIAN BUILDING STANDARDS
- DRAWINGS FOR THE PURPOSES OF DA ONLY (NOT FOR CONSTRUCTION) - FURTHER CONSULTANT/AUTHORITY COORDINATION WILL BE REQUIRED AT OC STAGE WHICH MAY IMPACT ON DESIGN AND PLANNING LAYOUTS
- ARCHITECTURAL PLANS TO BE READ IN CONJUNCTION WITH CONSULTANTS DRAWINGS, SPECIFICATIONS & REPORTS
- COPYRIGHT OF DESIGN SHOWN HEREON IS RETAINED BY PBD ARCHITECTS AND AUTHORITY IS REQUIRED FOR ANY REPRODUCTION
- AREA SCHEDULES SUPPLIED ARE APPROXIMATE ONLY - FUTURE ALLOWANCE FOR VERTICAL SERVICE DUCTS, STRUCTURAL WALL SYSTEMS AND CONSULTANT INPUT WILL BE REQUIRED

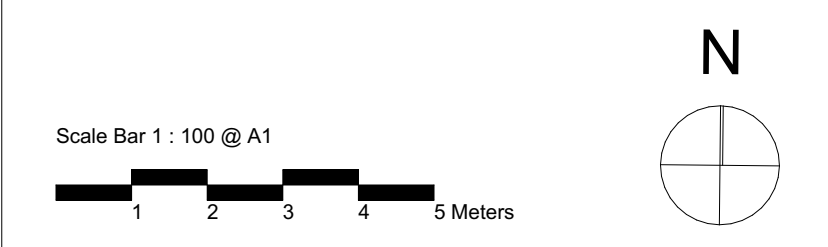
LEGEND:

- AW AWNING
- AH ACCESS HATCH
- AC A/C CONDENSER UNITS
- FH FIRE HYDRANT
- FHR FIRE HOSE REEL
- FS FIRE STAIRS
- GC GARBAGE CHUTE
- HW HIGHLIGHT WINDOW
- MV MECHANICAL RISER TO FUTURE DETAIL
- MB MAILBOX TO FUTURE DETAIL
- R 240L RECYCLING BIN
- SK SKYLIGHT
- ST STORAGE
- HWU HOT WATER UNITS

MATERIALS LEGEND:

- AFG ALUMINIUM FRAMED GLAZING
- LV ALUMINIUM ELLIPTICAL FIXED LOUVERS
- AW AWNING (TO FUTURE DETAIL)
- CONC CONCRETE
- FB FACE BRICK
- GB FRAMELESS TOUCHED GLASS BALUSTRADE (TO BCA/AUS STANDARDS)
- MB METAL BALUSTRADE
- MC METAL CLADDING
- FCE METAL FENCING (TO FUTURE SELECTION)
- PC COMPOSITE PANEL CLADDING
- PSX PRIVACY SCREEN (TO FUTURE SELECTION)
- PTX PAINT FINISH TYPE X
- RD ROLLER DOOR
- RP RIVER PEBBLES
- RW RENDERED FINISH/SELECTED PAINT FINISH
- TC TIMBER CLADDING
- VB EXTERNAL VENETIAN BLINDS

Issue	Date	Description
A	28/10/2023	DEVELOPMENT APPLICATION
B	7/03/2024	AMENDED DEVELOPMENT APPLICATION
C	29/05/2024	AMENDED DEVELOPMENT APPLICATION
D	12/05/2024	AMENDED DEVELOPMENT APPLICATION
E	12/07/2024	AMENDED DEVELOPMENT APPLICATION



CLIENT:
JAK Newport Pty Ltd

pbd architects

P - 02 9698 8140
 E - info@pbdarchitects.com.au
 W - pbdarchitects.com.au
 Level 2, 52 Albion Street,
 Surry Hills NSW 2010
 ABN 36 147 035 550
 Nominated Architect:
 Paul Buljovic - NSW 7768

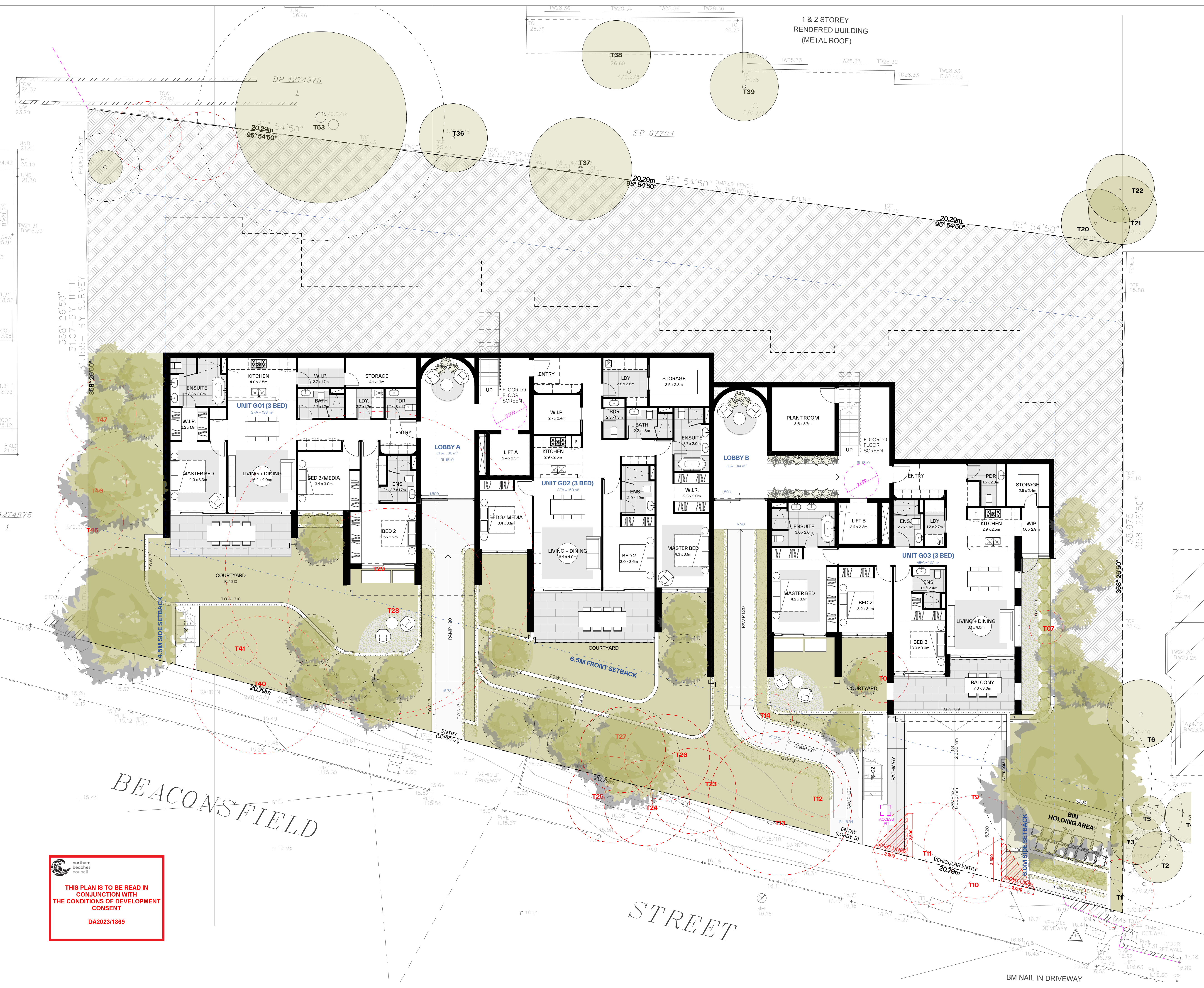
PROJECT:
RESIDENTIAL FLAT BUILDING - KENZA
 54 - 58 BEACONSFIELD STREET NEWPORT NSW

DRAWING TITLE:
Site Plan

DRAWING BY: AS	CHECKED BY: KL	DATE: 12/07/2024
SCALE: 1:100@A1	DRAWING NO: DA004	ISSUE: E
PROJECT NO: 2311		

THIS PLAN IS TO BE READ IN CONJUNCTION WITH THE CONDITIONS OF DEVELOPMENT CONSENT

DA2023/1869



1 & 2 STOREY
RENDERED BUILDING
(METAL ROOF)

GENERAL NOTES:

- ALL WORKS TO COMPLY WITH BUILDING CODE OF AUSTRALIA, REQUIREMENTS OF RELEVANT STATUTORY AUTHORITIES / LOCAL GOVERNMENT & RELEVANT AUSTRALIAN BUILDING STANDARDS
- DRAWINGS FOR THE PURPOSES OF DA ONLY (NOT FOR CONSTRUCTION) - FURTHER CONSULTANT/AUTHORITY COORDINATION WILL BE REQUIRED AT OC STAGE WHICH MAY IMPACT ON DESIGN AND PLANNING LAYOUTS
- ARCHITECTURAL PLANS TO BE READ IN CONJUNCTION WITH CONSULTANTS DRAWINGS, SPECIFICATIONS & REPORTS
- COPYRIGHT OF DESIGN SHOWN HEREON IS RETAINED BY PBD ARCHITECTS AND AUTHORITY IS REQUIRED FOR ANY REPRODUCTION
- AREA SCHEDULES SUPPLIED ARE APPROXIMATE ONLY - FUTURE ALLOWANCE FOR VERTICAL SERVICE DUCTS, STRUCTURAL WALL SYSTEMS AND CONSULTANT INPUT WILL BE REQUIRED

LEGEND:

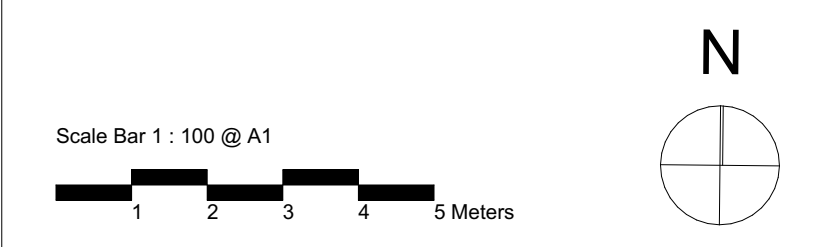
- AW AWNING
- AH ACCESS HATCH
- AC A/C CONDENSER UNITS
- FH FIRE HYDRANT
- FHR FIRE HOSE REEL
- FS FIRE STAIRS
- GC GARBAGE CHUTE
- HW HIGHLIGHT WINDOW
- MV MECHANICAL RISER TO FUTURE DETAIL
- MB MAILBOX TO FUTURE DETAIL
- R 240L RECYCLING BIN
- SK SKYLIGHT
- ST STORAGE
- HWU HOT WATER UNITS

MATERIALS LEGEND:

- AFG ALUMINIUM FRAMED GLAZING
- LV ALUMINIUM ELLIPTICAL FIXED LOUVERS
- AW AWNING (TO FUTURE DETAIL)
- CONC CONCRETE
- FB FACE BRICK
- GB FRAMELESS TOUCHED GLASS BALUSTRADE (TO BCA/AUS STANDARDS)
- MC METAL CLADDING
- FCE METAL FENCING (TO FUTURE SELECTION)
- PC COMPOSITE PANEL CLADDING
- PSK PRIVACY SCREEN (TO FUTURE SELECTION)
- PTX PAINT FINISH TYPE X
- RD ROLLER DOOR
- RP RIVER PEBBLES
- RW RENDERED FINISH/SELECTED PAINT FINISH
- TC TIMBER CLADDING
- VB EXTERNAL VENETIAN BLINDS

NOTE: REFER TO LANDSCAPE PLANS BY WYER & CO.

Issue	Date	Description
A	28/10/2023	DEVELOPMENT APPLICATION
B	7/02/2024	AMENDED DEVELOPMENT APPLICATION
C	29/05/2024	AMENDED DEVELOPMENT APPLICATION
D	12/09/2024	AMENDED DEVELOPMENT APPLICATION
E	12/07/2024	AMENDED DEVELOPMENT APPLICATION



CLIENT:
JAK Newport Pty Ltd

P - 02 9698 8140
 E - info@pbdarchitects.com.au
 W - pbdarchitects.com.au
 Level 2, 52 Albion Street,
 Surry Hills NSW 2000
 ABN 36 147 035 550
 Nominated Architect:
 Paul Buljovic - NSW 7768

PROJECT:
RESIDENTIAL FLAT BUILDING - KENZA
54 - 58 BEACONSFELD STREET NEWPORT NSW

DRAWING TITLE:
Ground Floor Plan

DRAWING BY: AS	CHECKED BY: KL	DATE: 12/07/2024
SCALE: 1:100@A1	DRAWING NO: DA100	ISSUE: E
PROJECT NO: 2311		

THIS PLAN IS TO BE READ IN CONJUNCTION WITH THE CONDITIONS OF DEVELOPMENT CONSENT
 DA2023/1869



GENERAL NOTES:

- ALL WORKS TO COMPLY WITH BUILDING CODE OF AUSTRALIA, REQUIREMENTS OF RELEVANT STATUTORY AUTHORITIES / LOCAL GOVERNMENT & RELEVANT AUSTRALIAN BUILDING STANDARDS
- DRAWINGS FOR THE PURPOSES OF DA ONLY (NOT FOR CONSTRUCTION) - FURTHER CONSULTANT/AUTHORITY COORDINATION WILL BE REQUIRED AT CC STAGE WHICH MAY IMPACT ON DESIGN AND PLANNING LAYOUTS
- ARCHITECTURAL PLANS TO BE READ IN CONJUNCTION WITH CONSULTANTS DRAWINGS, SPECIFICATIONS & REPORTS
- COPYRIGHT OF DESIGN SHOWN HEREON IS RETAINED BY PBD ARCHITECTS AND AUTHORITY IS REQUIRED FOR ANY REPRODUCTION
- AREA SCHEDULES SUPPLIED ARE APPROXIMATE ONLY - FUTURE ALLOWANCE FOR VERTICAL SERVICE DUCTS, STRUCTURAL WALL SYSTEMS AND CONSULTANT INPUT WILL BE REQUIRED

LEGEND:

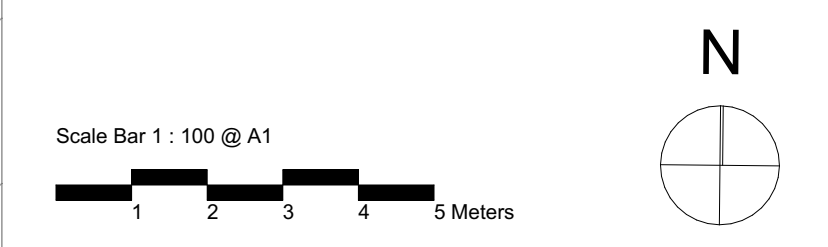
- AW AWNING
- AH ACCESS HATCH
- AC A/C CONDENSER UNITS
- FH FIRE HYDRANT
- FHR FIRE HOSE REEL
- FS FIRE STAIRS
- GC GARBAGE CHUTE
- HV HIGHLIGHT WINDOW
- MV MECHANICAL RISER TO FUTURE DETAIL
- MB MAILBOX TO FUTURE DETAIL
- R 240L RECYCLING BIN
- SK SKYLIGHT
- ST STORAGE
- HWU HOT WATER UNITS

MATERIALS LEGEND:

- AFG ALUMINIUM FRAMED GLAZING
- LV ALUMINIUM ELLIPTICAL FIXED LOUVERS
- AW AWNING (TO FUTURE DETAIL)
- CONC CONCRETE
- FB FACE BRICK
- GB FRAMELESS TOUCHED GLASS BALUSTRADE (TO BCA/AUS STANDARDS)
- MB METAL BALUSTRADE
- MC METAL CLADDING
- FCE METAL FENCING (TO FUTURE SELECTION)
- PC COMPOSITE PANEL CLADDING
- PSK PRIVACY SCREEN (TO FUTURE SELECTION)
- PTX PAINT FINISH TYPE-X
- RD ROLLER DOOR
- RP RIVER PEBBLES
- RW RENDERED FINISH/SELECTED PAINT FINISH
- TC TIMBER CLADDING
- VB EXTERNAL VENETIAN BLINDS

NOTE: REFER TO LANDSCAPE PLANS BY WYER & CO.

Issue	Date	Description
A	28/10/2023	DEVELOPMENT APPLICATION
B	7/05/2024	AMENDED DEVELOPMENT APPLICATION
C	29/05/2024	AMENDED DEVELOPMENT APPLICATION
D	12/06/2024	AMENDED DEVELOPMENT APPLICATION



CLIENT:
JAK Newport Pty Ltd

P - 02 9698 8140
E - info@pbdarchitects.com.au
W - pbdarchitects.com.au
Level 2, 52 Albion Street,
Sunny Hills NSW 2100
ABN 36 147 035 550
Registered Architect:
Paul Buljevic - NSW 7768

PROJECT:
RESIDENTIAL FLAT BUILDING - KENZA
54 - 58 BEACONSFIELD STREET NEWPORT NSW

DRAWING TITLE:
First Floor Plan

DRAWING BY: AS	CHECKED BY: KL	DATE: 2/07/2024
SCALE: 1:100@A1	DRAWING NO: DA101	ISSUE: D
PROJECT NO: 2311		

northern beaches council

THIS PLAN IS TO BE READ IN CONJUNCTION WITH THE CONDITIONS OF DEVELOPMENT CONSENT

DA20231869



GENERAL NOTES:

- ALL WORKS TO COMPLY WITH BUILDING CODE OF AUSTRALIA, REQUIREMENTS OF RELEVANT STATUTORY AUTHORITIES / LOCAL GOVERNMENT & RELEVANT AUSTRALIAN BUILDING STANDARDS
- DRAWINGS FOR THE PURPOSES OF DA ONLY (NOT FOR CONSTRUCTION) - FURTHER CONSULTANT/AUTHORITY COORDINATION WILL BE REQUIRED AT CC STAGE WHICH MAY IMPACT ON DESIGN AND PLANNING LAYOUTS
- ARCHITECTURAL PLANS TO BE READ IN CONJUNCTION WITH CONSULTANTS DRAWINGS, SPECIFICATIONS & REPORTS
- COPYRIGHT OF DESIGN SHOWN HEREON IS RETAINED BY PBD ARCHITECTS AND AUTHORITY IS REQUIRED FOR ANY REPRODUCTION
- AREA SCHEDULES SUPPLIED ARE APPROXIMATE ONLY - FUTURE ALLOWANCE FOR VERTICAL SERVICE DUCTS, STRUCTURAL WALL SYSTEMS AND CONSULTANT INPUT WILL BE REQUIRED

LEGEND:

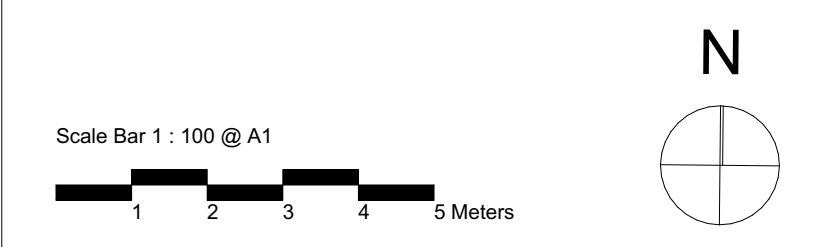
- AW AWNING
- AH ACCESS HATCH
- AC A/C CONDENSER UNITS
- FH FIRE HYDRANT
- FHR FIRE HOSE REEL
- FS FIRE STAIRS
- GC GARBAGE CHUTE
- HV HIGHLIGHT WINDOW
- MV MECHANICAL RISER TO FUTURE DETAIL
- MB MAILBOX TO FUTURE DETAIL
- R 240L RECYCLING BIN
- SK SKYLIGHT
- ST STORAGE
- HWU HOT WATER UNITS

MATERIALS LEGEND:

- AFG ALUMINIUM FRAMED GLAZING
- LV ALUMINIUM ELLIPTICAL FIXED LOUVERS
- AW AWNING (TO FUTURE DETAIL)
- CONC CONCRETE
- FB FACE BRICK
- GB FRAMELESS TOUCHED GLASS BALUSTRADE (TO BCA/AUS STANDARDS)
- MB METAL BALUSTRADE
- MC METAL CLADDING
- FCE METAL FENCING (TO FUTURE SELECTION)
- PC COMPOSITE PANEL CLADDING
- PSK PRIVACY SCREEN (TO FUTURE SELECTION)
- PTX PAINT FINISH TYPE X
- RD ROLLER DOOR
- RP RIVER PEBBLES
- RW RENDERED FINISH/SELECTED PAINT FINISH
- TC TIMBER CLADDING
- VB EXTERNAL VENETIAN BLINDS

NOTE: REFER TO LANDSCAPE PLANS BY WYER & CO.

Issue	Date	Description
A	28/10/2023	DEVELOPMENT APPLICATION
B	7/05/2024	AMENDED DEVELOPMENT APPLICATION
C	29/05/2024	AMENDED DEVELOPMENT APPLICATION
D	12/06/2024	AMENDED DEVELOPMENT APPLICATION



CLIENT:
JAK Newport Pty Ltd

pbd architects

P - 02 9698 8140
E - info@pbdarchitects.com.au
W - pbdarchitects.com.au
Level 2, 52 Albion Street,
Sunny Hills NSW 2010
ABN 36 147 035 550
Nominated Architect:
Paul Buljevic - NSW 7768

PROJECT:
RESIDENTIAL FLAT BUILDING - KENZA
54 - 58 BEACONSFIELD STREET NEWPORT NSW

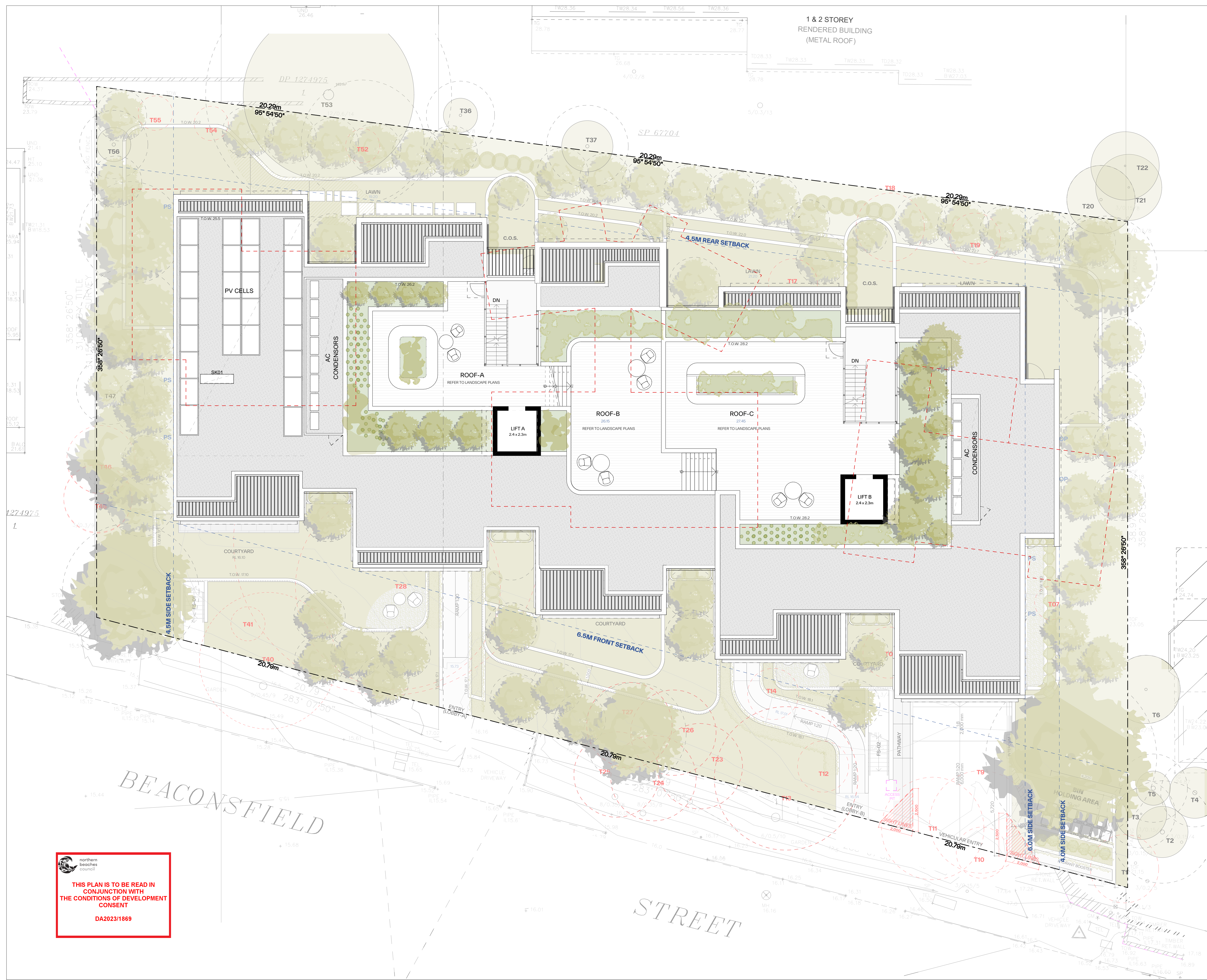
DRAWING TITLE:
Second Floor Plan

DRAWING BY: AS	CHECKED BY: KL	DATE: 2/07/2024
SCALE: 1:100@A1	DRAWING NO: DA102	ISSUE: D
PROJECT NO: 2311		

northern beaches council

THIS PLAN IS TO BE READ IN CONJUNCTION WITH THE CONDITIONS OF DEVELOPMENT CONSENT

DA2023/1869



GENERAL NOTES:

- ALL WORKS TO COMPLY WITH BUILDING CODE OF AUSTRALIA, REQUIREMENTS OF RELEVANT STATUTORY AUTHORITIES / LOCAL GOVERNMENT & RELEVANT AUSTRALIAN BUILDING STANDARDS
- DRAWINGS FOR THE PURPOSES OF DA ONLY (NOT FOR CONSTRUCTION) - FURTHER CONSULTANT/AUTHORITY COORDINATION WILL BE REQUIRED AT CC STAGE WHICH MAY IMPACT ON DESIGN AND PLANNING LAYOUTS
- ARCHITECTURAL PLANS TO BE READ IN CONJUNCTION WITH CONSULTANTS DRAWINGS, SPECIFICATIONS & REPORTS
- COPYRIGHT OF DESIGN SHOWN HEREON IS RETAINED BY PBD ARCHITECTS AND AUTHORITY IS REQUIRED FOR ANY REPRODUCTION
- AREA SCHEDULES SUPPLIED ARE APPROXIMATE ONLY - FUTURE ALLOWANCE FOR VERTICAL SERVICE DUCTS, STRUCTURAL WALL SYSTEMS AND CONSULTANT INPUT WILL BE REQUIRED

LEGEND:

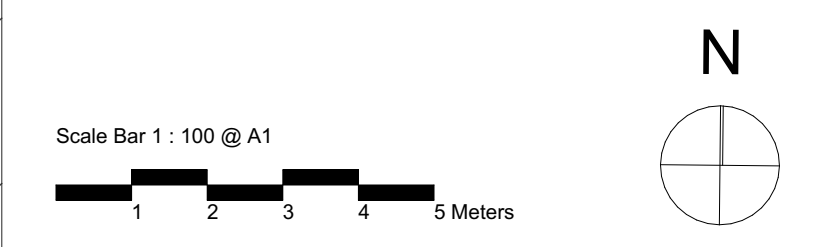
- AW AWNING
- AH ACCESS HATCH
- AC A/C CONDENSER UNITS
- FH FIRE HYDRANT
- FHR FIRE HOSE REEL
- FS FIRE STAIRS
- GC GARBAGE CHUTE
- HV HIGHLIGHT WINDOW
- MV MECHANICAL RISER TO FUTURE DETAIL
- MB MAILBOX TO FUTURE DETAIL
- R 240L RECYCLING BIN
- SK SKYLIGHT
- ST STORAGE
- HWU HOT WATER UNITS

MATERIALS LEGEND:

- AFG ALUMINIUM FRAMED GLAZING
- LV ALUMINIUM ELLIPTICAL FIXED LOUVERS
- AW AWNING (TO FUTURE DETAIL)
- CONC CONCRETE
- FB FACE BRICK
- GB FRAMELESS TOUCHED GLASS BALUSTRADE (TO BCA/AUS STANDARDS)
- MB METAL BALUSTRADE
- MC METAL CLADDING
- FCE METAL FENCING (TO FUTURE SELECTION)
- PC COMPOSITE PANEL CLADDING
- PSK PRIVACY SCREEN (TO FUTURE SELECTION)
- PTX PAINT FINISH TYPEX
- RD ROLLER DOOR
- RP RIVER PEBBLES
- RW RENDERED FINISH/SELECTED PAINT FINISH
- TC TIMBER CLADDING
- VB EXTERNAL VENETIAN BLINDS

NOTE: REFER TO LANDSCAPE PLANS BY WYER & CO.

Issue	Date	Description
A	28/10/2023	DEVELOPMENT APPLICATION
B	7/05/2024	AMENDED DEVELOPMENT APPLICATION
C	29/05/2024	AMENDED DEVELOPMENT APPLICATION
D	12/05/2024	AMENDED DEVELOPMENT APPLICATION
E	12/07/2024	AMENDED DEVELOPMENT APPLICATION



CLIENT:
JAK Newport Pty Ltd

pbd architects

P - 02 9698 8140
E - info@pbdarchitects.com.au
W - pbdarchitects.com.au
Level 2, 52 Albion Street,
Sunny Hills NSW 2100
ABN 36 147 035 550
Nominated Architect:
Paul Buljovic - NSW 7768

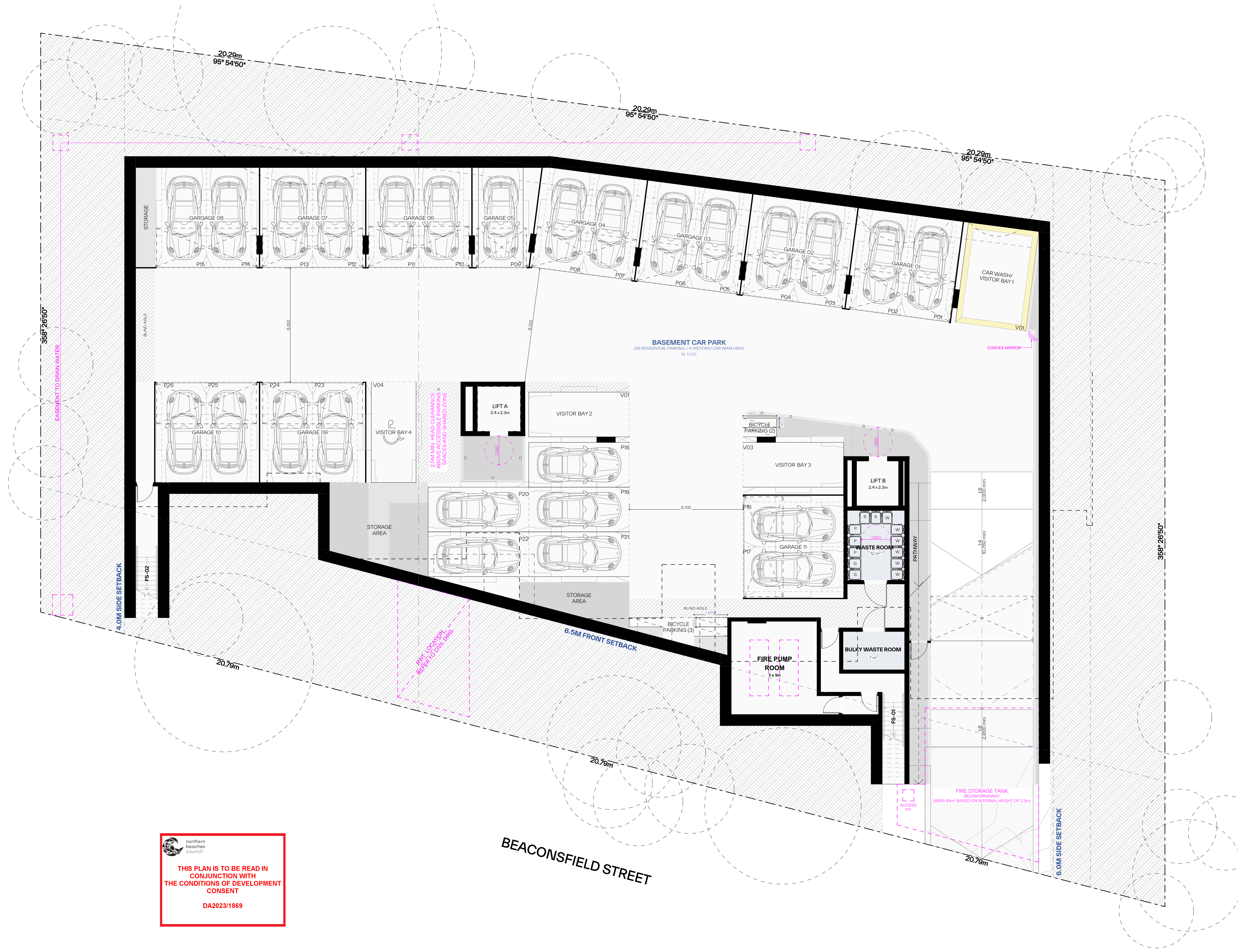
PROJECT:
RESIDENTIAL FLAT BUILDING - KENZA
54 - 58 BEACONSFIELD STREET NEWPORT NSW

DRAWING TITLE:
Roof Plan

DRAWING BY: AS	CHECKED BY: KL	DATE: 12/07/2024
SCALE: 1:100@A1	DRAWING NO: DA103	ISSUE: E
PROJECT NO: 2311		

THIS PLAN IS TO BE READ IN CONJUNCTION WITH THE CONDITIONS OF DEVELOPMENT CONSENT

DA2023/1869



GENERAL NOTES:

- ALL WORKS TO COMPLY WITH BUILDING CODE OF AUSTRALIA, REQUIREMENTS OF RELEVANT STATUTORY AUTHORITIES / LOCAL GOVERNMENT & RELEVANT AUSTRALIAN BUILDING STANDARDS
- DRAWINGS FOR THE PURPOSES OF DA ONLY (NOT FOR CONSTRUCTION) - FURTHER CONSULTANT / AUTHORITY COORDINATION WILL BE REQUIRED AT CC STAGE WHICH MAY IMPACT ON DESIGN AND PLANNING LAYOUTS
- ARCHITECTURAL PLANS TO BE READ IN CONJUNCTION WITH CONSULTANTS DRAWINGS, SPECIFICATIONS & REPORTS
- COPYRIGHT OF DESIGN SHOWN HEREON IS RETAINED BY PBD ARCHITECTS AND AUTHORITY IS REQUIRED FOR ANY REPRODUCTION
- AREA SCHEDULES SUPPLIED ARE APPROXIMATE ONLY - FUTURE ALLOWANCE FOR VERTICAL SERVICE DUCTS, STRUCTURAL WALL SYSTEMS AND CONSULTANT INPUT WILL BE REQUIRED

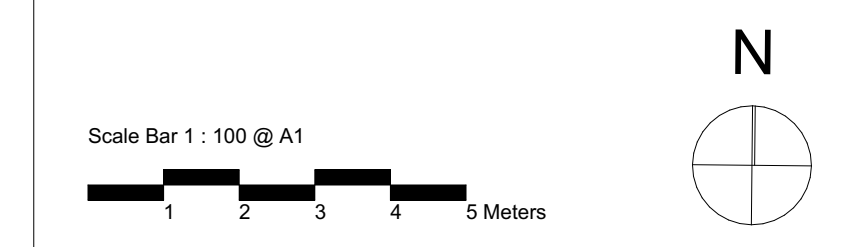
LEGEND:

- AW AWNING
- AH ACCESS HATCH
- AC A/C CONDENSER UNITS
- FH FIRE HYDRANT
- FHR FIRE HOSE REEL
- FS FIRE STAIRS
- GC GARGAGE CHUTE
- HW HIGHLIGHT WINDOW
- MV MECHANICAL RISER TO FUTURE DETAIL
- MB MAILBOX TO FUTURE DETAIL
- R 240L RECYCLING BIN
- SK SKYLIGHT
- ST STORAGE
- HWU HOT WATER UNITS

MATERIALS LEGEND:

- AFG ALUMINIUM FRAMED GLAZING
- LV ALUMINIUM ELLIPTICAL FIXED LOUVERS
- AW AWNING (TO FUTURE DETAIL)
- CONC CONCRETE
- FB FACE BRICK
- GB FRAMELESS TOUCHED GLASS BALUSTRADE (TO BCA/AUS STANDARDS)
- MB METAL BALUSTRADE
- MC METAL CLADDING
- FCE METAL FENCING (TO FUTURE SELECTION)
- PC COMPOSITE PANEL CLADDING
- PSK PRIVACY SCREEN (TO FUTURE SELECTION)
- PTX PAINT FINISH TYPE
- RD ROLLER DOOR
- RP RIVER PEBBLES
- RW RENDERED FINISH/SELECTED PAINT FINISH
- TC TIMBER CLADDING
- VB EXTERNAL VENETIAN BLINDS

Issue	Date	Description
A	28/10/2023	DEVELOPMENT APPLICATION
B	7/02/2024	AMENDED DEVELOPMENT APPLICATION
C	29/05/2024	AMENDED DEVELOPMENT APPLICATION
D	12/09/2024	AMENDED DEVELOPMENT APPLICATION
E	20/08/2024	AMENDED DEVELOPMENT APPLICATION



CLIENT:
JAK Newport Pty Ltd

P - 02 9698 8140
 E - info@pbdarchitects.com.au
 W - pbdarchitects.com.au
 Level 2, 52 Albion Street,
 Sunny Hills NSW 2100
 ABN 36 147 035 550
 Nominated Architect:
 Paul Buljevic - NSW 7768

pbd architects

PROJECT:
RESIDENTIAL FLAT BUILDING - KENZA
 54 - 58 BEACONSFIELD STREET NEWPORT NSW

DRAWING TITLE:
Basement Plan

DRAWING BY: AS	CHECKED BY: KL	DATE: 20/08/2024
SCALE: 1:100@A1	DRAWING NO: DA104	ISSUE: E
PROJECT NO: 2311		

northern beaches council

THIS PLAN IS TO BE READ IN CONJUNCTION WITH THE CONDITIONS OF DEVELOPMENT CONSENT

DA2023/1869



East Elevation

1:100

1



North Elevation

1:100

2

GENERAL NOTES:

- ALL WORKS TO COMPLY WITH BUILDING CODE OF AUSTRALIA, REQUIREMENTS OF RELEVANT STATUTORY AUTHORITIES / LOCAL GOVERNMENT & RELEVANT AUSTRALIAN BUILDING STANDARDS
- DRAWINGS FOR THE PURPOSES OF DA ONLY (NOT FOR CONSTRUCTION) - FURTHER CONSULTANT/AUTHORITY COORDINATION WILL BE REQUIRED AT CC STAGE WHICH MAY IMPACT ON DESIGN AND PLANNING LAYOUTS
- ARCHITECTURAL PLANS TO BE READ IN CONJUNCTION WITH CONSULTANTS DRAWINGS, SPECIFICATIONS & REPORTS
- COPYRIGHT OF DESIGN SHOWN HEREON IS RETAINED BY PBD ARCHITECTS AND AUTHORITY IS REQUIRED FOR ANY REPRODUCTION
- AREA SCHEDULES SUPPLIED ARE APPROXIMATE ONLY - FUTURE ALLOWANCE FOR VERTICAL SERVICE DUCTS, STRUCTURAL WALL SYSTEMS AND CONSULTANT INPUT WILL BE REQUIRED

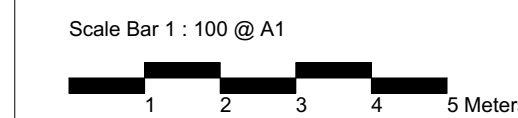
LEGEND:

- AW AWNING
- AH ACCESS HATCH
- AC A/C CONDENSER UNITS
- FH FIRE HYDRANT
- FHR FIRE HOSE REEL
- PS FIRE STAIRS
- GC GARBAGE CHUTE
- HW HIGHLIGHT WINDOW
- MV MECHANICAL RISER TO FUTURE DETAIL
- MB MAILBOX TO FUTURE DETAIL
- R 240L RECYCLING BIN
- SK SKYLIGHT
- ST STORAGE
- HWU HOT WATER UNITS

MATERIALS LEGEND:

- AFG ALUMINIUM FRAMED GLAZING
- LV ALUMINIUM ELLIPTICAL FIXED LOUVERS
- AW AWNING (TO FUTURE DETAIL)
- CONC CONCRETE
- FB FACE BRICK
- GB FRAMELESS TOUCHED GLASS BALUSTRADE (TO BCA/AUS STANDARDS)
- MB METAL BALUSTRADE
- MC METAL CLADDING
- FCE METAL FENCING (TO FUTURE SELECTION)
- PC COMPOSITE PANEL CLADDING
- PSK PRIVACY SCREEN (TO FUTURE SELECTION)
- PTX PAINT FINISH TYPEX
- RD ROLLER DOOR
- RP RIVER PEBBLES
- RW RENDERED FINISH/SELECTED PAINT FINISH
- TC TIMBER CLADDING
- VB EXTERNAL VENETIAN BLINDS

Issue	Date	Description
A	28/10/2023	DEVELOPMENT APPLICATION
B	7/05/2024	AMENDED DEVELOPMENT APPLICATION
C	29/05/2024	AMENDED DEVELOPMENT APPLICATION
D	12/06/2024	AMENDED DEVELOPMENT APPLICATION



CLIENT:
JAK Newport Pty Ltd

P - 02 9698 8140
E - info@pbdarchitects.com.au
W - pbdarchitects.com.au
Level 2, 52 Albion Street,
Sunny Hills NSW 2010
ABN 36 147 035 550
Registered Architect:
Paul Buljevic NSW 7768

pbd
architects

PROJECT:
RESIDENTIAL FLAT BUILDING - KENZA
54 - 58 BEACONSFIELD STREET NEWPORT NSW

DRAWING TITLE:
Elevation Sheet 1

DRAWING BY: AS	CHECKED BY: KL	DATE: 2/07/2024
SCALE: 1:100@A1	DRAWING NO: DA200	ISSUE: D
PROJECT NO: 2311		

GENERAL NOTES:

- ALL WORKS TO COMPLY WITH BUILDING CODE OF AUSTRALIA, REQUIREMENTS OF RELEVANT STATUTORY AUTHORITIES / LOCAL GOVERNMENT & RELEVANT AUSTRALIAN BUILDING STANDARDS
- DRAWINGS FOR THE PURPOSES OF DA ONLY (NOT FOR CONSTRUCTION) - FURTHER CONSULTANT / AUTHORITY COORDINATION WILL BE REQUIRED AT CC STAGE WHICH MAY IMPACT ON DESIGN AND PLANNING LAYOUTS
- ARCHITECTURAL PLANS TO BE READ IN CONJUNCTION WITH CONSULTANTS DRAWINGS, SPECIFICATIONS & REPORTS
- COPYRIGHT OF DESIGN SHOWN HEREON IS RETAINED BY PBD ARCHITECTS AND AUTHORITY IS REQUIRED FOR ANY REPRODUCTION
- AREA SCHEDULES SUPPLIED ARE APPROXIMATE ONLY - FUTURE ALLOWANCE FOR VERTICAL SERVICE DUCTS, STRUCTURAL WALL SYSTEMS AND CONSULTANT INPUT WILL BE REQUIRED

LEGEND:

- AW AWNING
- AH ACCESS HATCH
- AC A/C CONDENSER UNITS
- FH FIRE HYDRANT
- FHR FIRE HOSE REEL
- FS FIRE STAIRS
- GC GARBAGE CHUTE
- HW HIGHLIGHT WINDOW
- MV MECHANICAL RISER TO FUTURE DETAIL
- MB MAILBOX TO FUTURE DETAIL
- R 240L RECYCLING BIN
- SK SKYLIGHT
- ST STORAGE
- HWU HOT WATER UNITS

MATERIALS LEGEND:

- AFG ALUMINIUM FRAMED GLAZING
- LV ALUMINIUM ELLIPTICAL FIXED LOUVERS
- AW AWNING (TO FUTURE DETAIL)
- CONC CONCRETE
- FB FACE BRICK
- GB FRAMELESS TOUCHED GLASS BALUSTRADE (TO BCA/AUS STANDARDS)
- MB METAL BALUSTRADE
- MC METAL CLADDING
- FCE METAL FENCING (TO FUTURE SELECTION)
- PC COMPOSITE PANEL CLADDING
- PSK PRIVACY SCREEN (TO FUTURE SELECTION)
- PTX PAINT FINISH TYPEX
- RD ROLLER DOOR
- RP RIVER PEBBLES
- RW RENDERED FINISH/SELECTED PAINT FINISH
- TC TIMBER CLADDING
- VB EXTERNAL VENETIAN BLINDS



South Elevation

1:100

3



West Elevation

1:100

4

Issue	Date	Description
A	28/10/2023	DEVELOPMENT APPLICATION
B	7/05/2024	AMENDED DEVELOPMENT APPLICATION
C	29/05/2024	AMENDED DEVELOPMENT APPLICATION
D	12/06/2024	AMENDED DEVELOPMENT APPLICATION



CLIENT:
JAK Newport Pty Ltd



THIS PLAN IS TO BE READ IN CONJUNCTION WITH THE CONDITIONS OF DEVELOPMENT CONSENT

 DA2023/1869

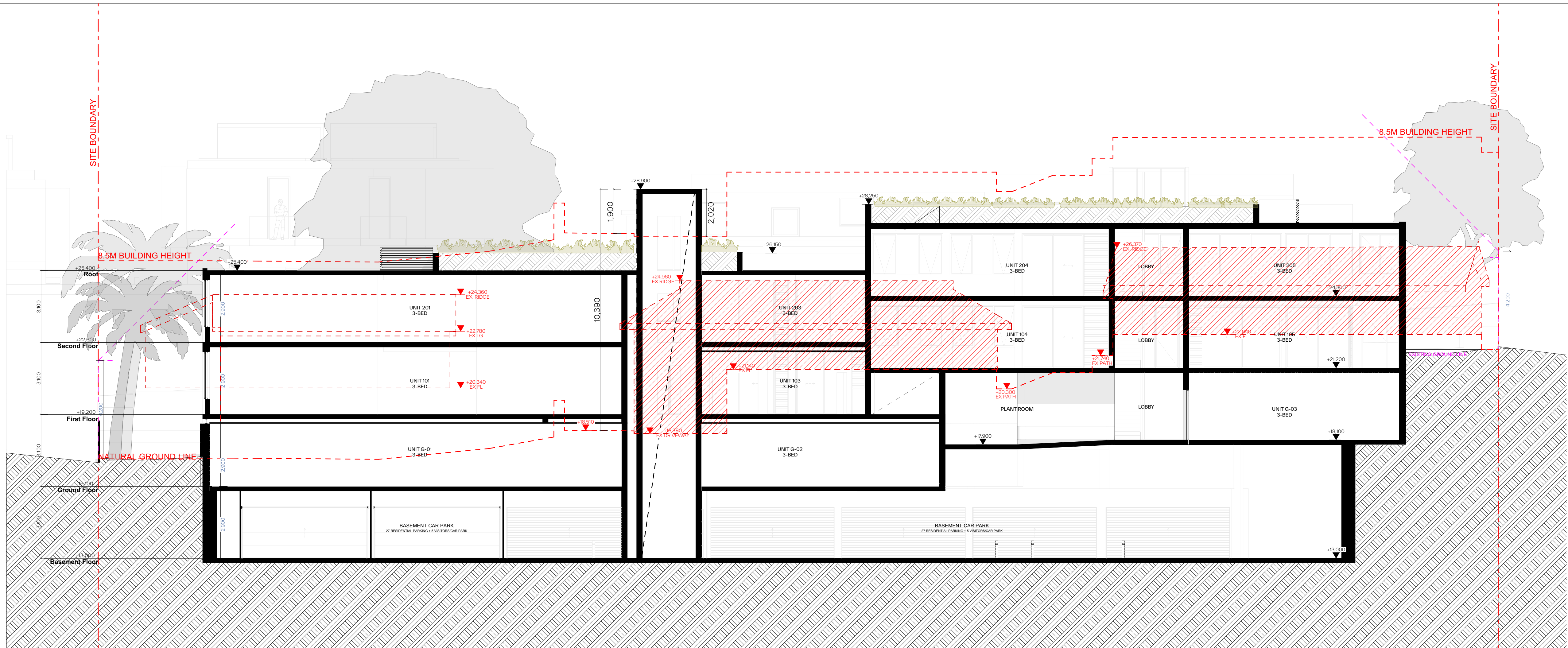
101
pbd architects

P - 02 9698 8140
E - info@pbdarchitects.com.au
W - pbdarchitects.com.au
Level 2, 52 Albion Street,
Sunny Hills NSW 2100
ABN 36 147 035 550
Nominated Architect:
Paul Buljevic: NSW 7768

PROJECT:
RESIDENTIAL FLAT BUILDING - KENZA
54 - 58 BEACONSFIELD STREET NEWPORT NSW

DRAWING TITLE:
Elevation Sheet 2

DRAWING BY: AS	CHECKED BY: KL	DATE: 2/07/2024
SCALE: 1:100@A1	DRAWING NO: DA201	ISSUE: D
PROJECT NO: 2311		



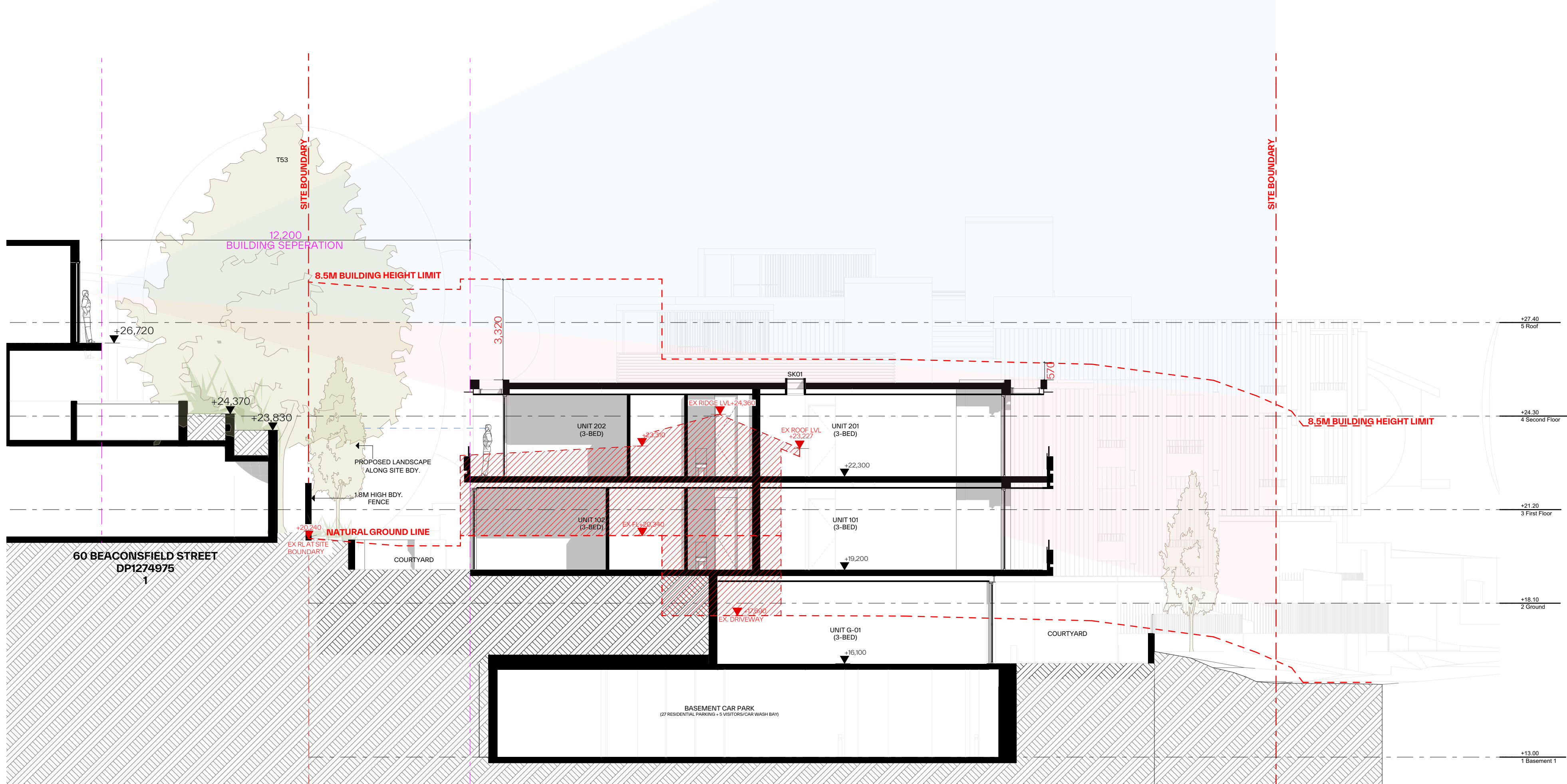
SECTION 01

1:100

- GENERAL NOTES:**
- ALL WORKS TO COMPLY WITH BUILDING CODE OF AUSTRALIA, REQUIREMENTS OF RELEVANT STATUTORY AUTHORITIES / LOCAL GOVERNMENT & RELEVANT AUSTRALIAN BUILDING STANDARDS
 - DRAWINGS FOR THE PURPOSES OF DA ONLY (NOT FOR CONSTRUCTION) - FURTHER CONSULTANT/AUTHORITY COORDINATION WILL BE REQUIRED AT CC STAGE WHICH MAY IMPACT ON DESIGN AND PLANNING LAYOUTS
 - ARCHITECTURAL PLANS TO BE READ IN CONJUNCTION WITH CONSULTANTS DRAWINGS, SPECIFICATIONS & REPORTS
 - COPYRIGHT OF DESIGN SHOWN HEREON IS RETAINED BY PBD ARCHITECTS AND AUTHORITY IS REQUIRED FOR ANY REPRODUCTION
 - AREA SCHEDULES SUPPLIED ARE APPROXIMATE ONLY - FUTURE ALLOWANCE FOR VERTICAL SERVICE DUCTS, STRUCTURAL WALL SYSTEMS AND CONSULTANT INPUT WILL BE REQUIRED

- LEGEND:**
- AW AWNING
 - AH ACCESS HATCH
 - AC A/C CONDENSER UNITS
 - FH FIRE HYDRANT
 - FHR FIRE HOSE REEL
 - FS FIRE STAIRS
 - GC GARBAGE CHUTE
 - HW HIGHLIGHT WINDOW
 - MV MECHANICAL RISER TO FUTURE DETAIL
 - MB MAILBOX TO FUTURE DETAIL
 - R 240L RECYCLING BIN
 - SK SKYLIGHT
 - ST STORAGE
 - HWU HOT WATER UNITS

- MATERIALS LEGEND:**
- AFG ALUMINIUM FRAMED GLAZING
 - LV ALUMINIUM ELLIPTICAL FIXED LOUVERS
 - AW AWNING (TO FUTURE DETAIL)
 - CONC CONCRETE
 - FB FACE BRICK
 - GB FRAMELESS TOUCHED GLASS BALUSTRADE (TO BCA/AUS STANDARDS)
 - MB METAL BALUSTRADE
 - MC METAL CLADDING
 - FCE METAL FENCING (TO FUTURE SELECTION)
 - PC COMPOSITE PANEL CLADDING
 - PSK PRIVACY SCREEN (TO FUTURE SELECTION)
 - PTX PAINT FINISH TYPE X
 - RD ROLLER DOOR
 - RP RIVER PEBBLES
 - RW RENDERED FINISH/SELECTED PAINT FINISH
 - TC TIMBER CLADDING
 - VB EXTERNAL VENETIAN BLINDS

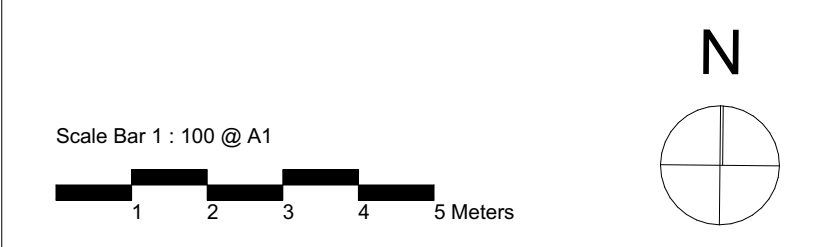


SECTIO 02

1:100

northern beaches council
THIS PLAN IS TO BE READ IN CONJUNCTION WITH THE CONDITIONS OF DEVELOPMENT CONSENT
 DA2023/1869

Issue	Date	Description
B	7/05/2024	AMENDED DEVELOPMENT APPLICATION
C	29/05/2024	AMENDED DEVELOPMENT APPLICATION
D	12/06/2024	AMENDED DEVELOPMENT APPLICATION



CLIENT:
JAK Newport Pty Ltd

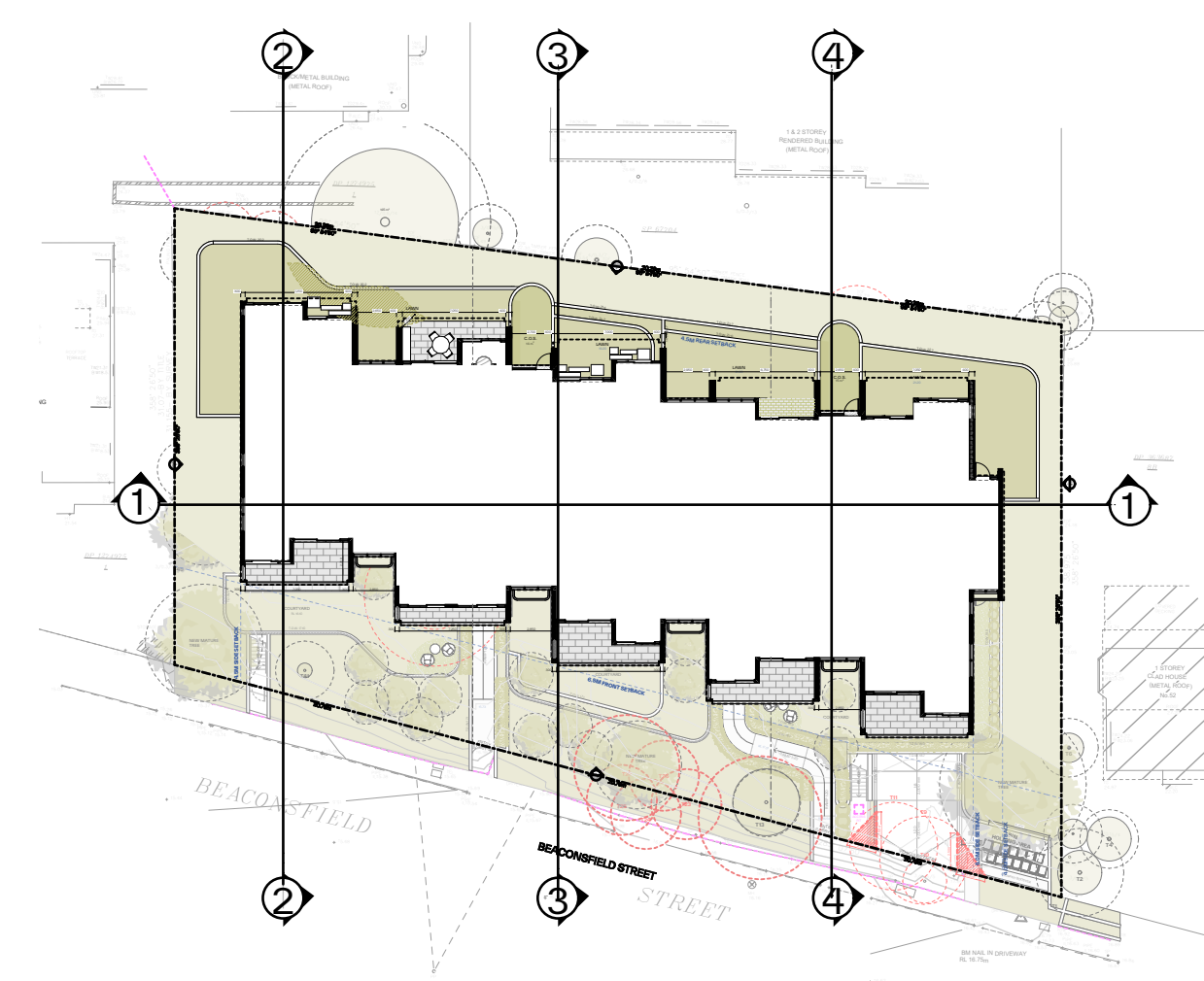
P - 02 9698 8140
 E - info@pbdarchitects.com.au
 W - pbdarchitects.com.au
 Level 2, 52 Albion Street,
 Surry Hills NSW 2010
 ABN 36 147 035 550
 Notarised Architect:
 Paul Buljevic - NSW 7768

pbd architects

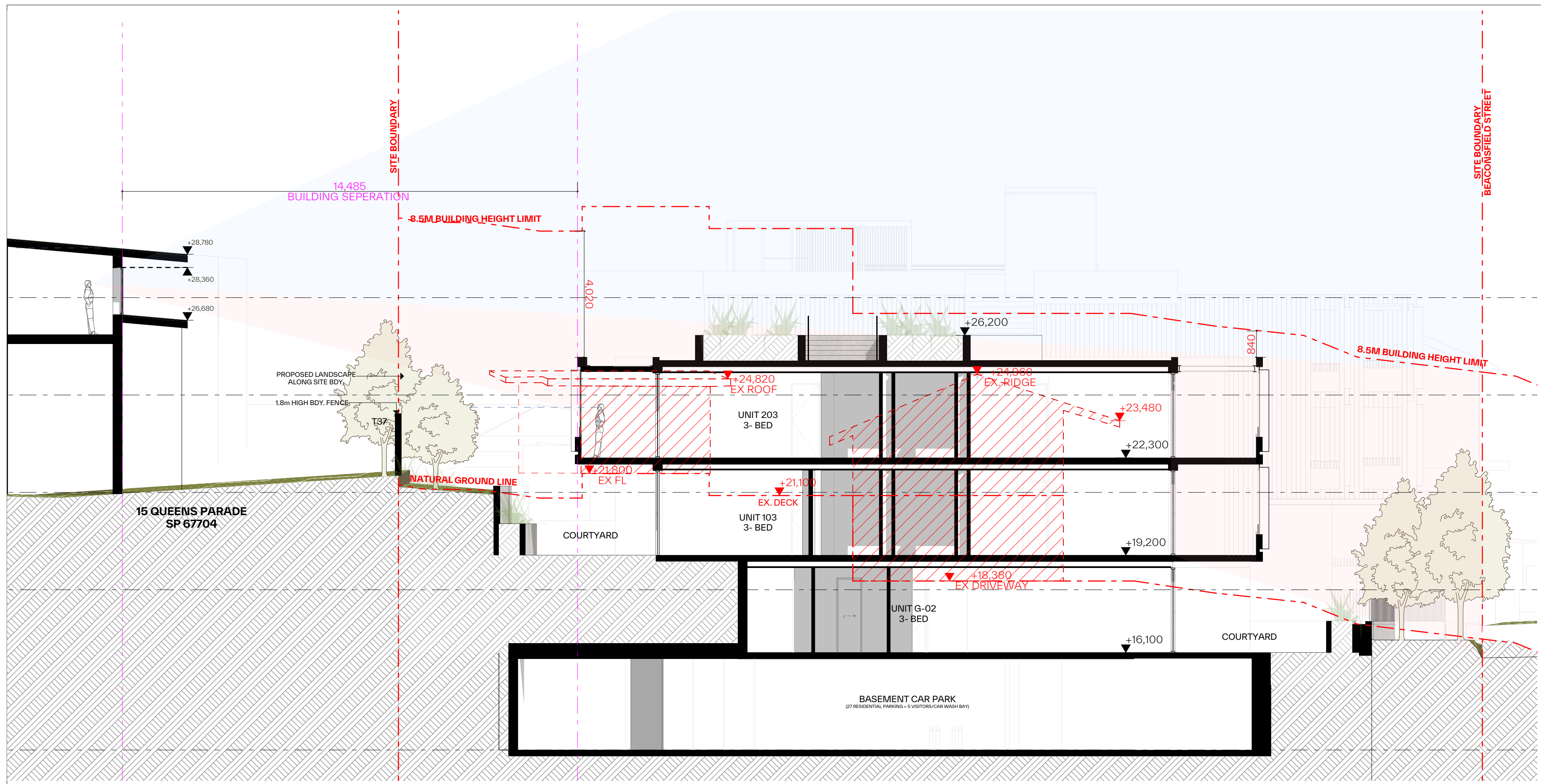
PROJECT:
RESIDENTIAL FLAT BUILDING - KENZA
54 - 58 BEACONSFIELD STREET NEWPORT NSW

DRAWING TITLE:
Section Sheet 1

DRAWING BY: AS	CHECKED BY: KL	DATE: 17/06/2024
SCALE: 1:100@A1	DRAWING NO: DA300	ISSUE: D
PROJECT NO: 2311		

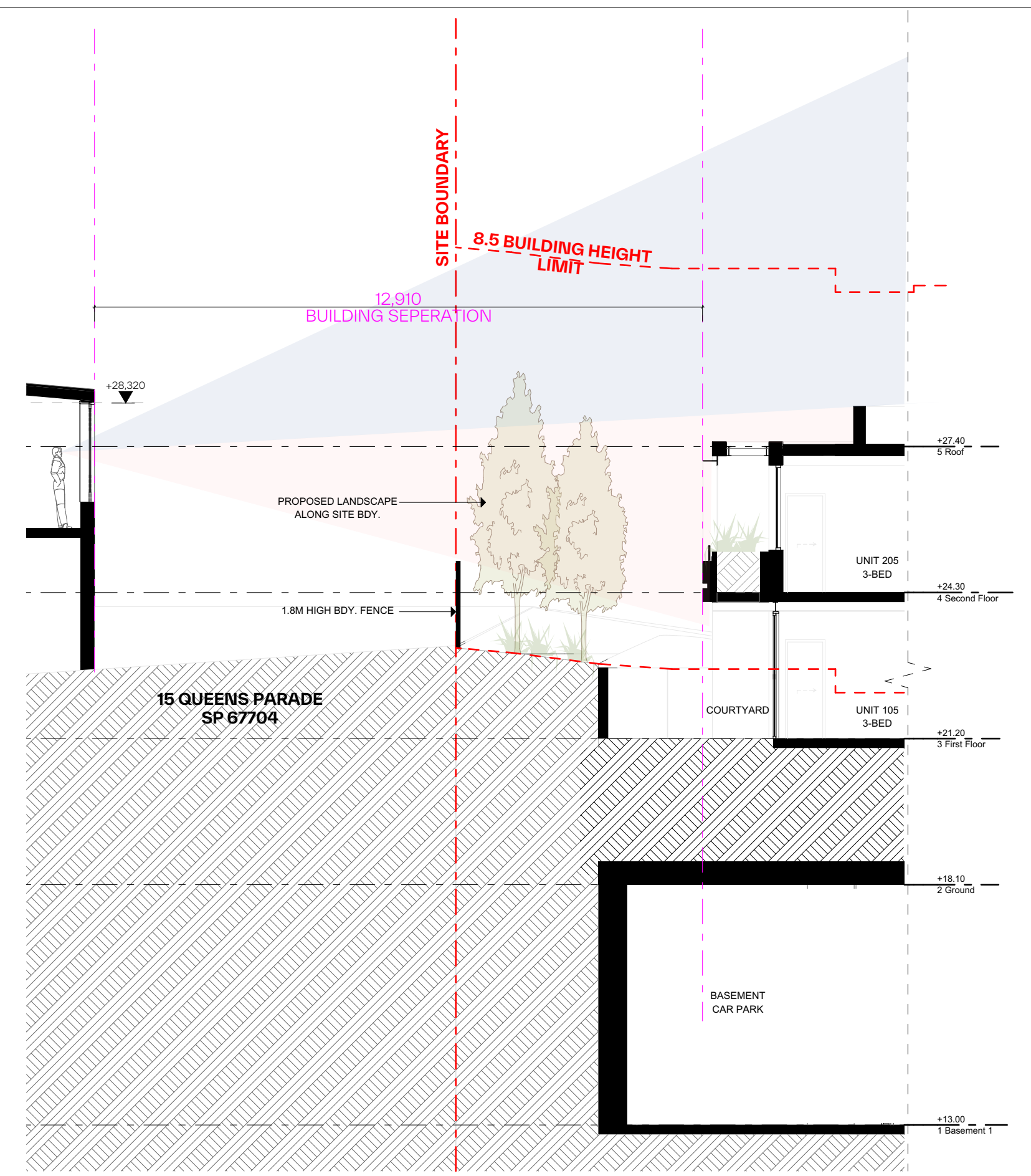


KEY PLAN @1:500



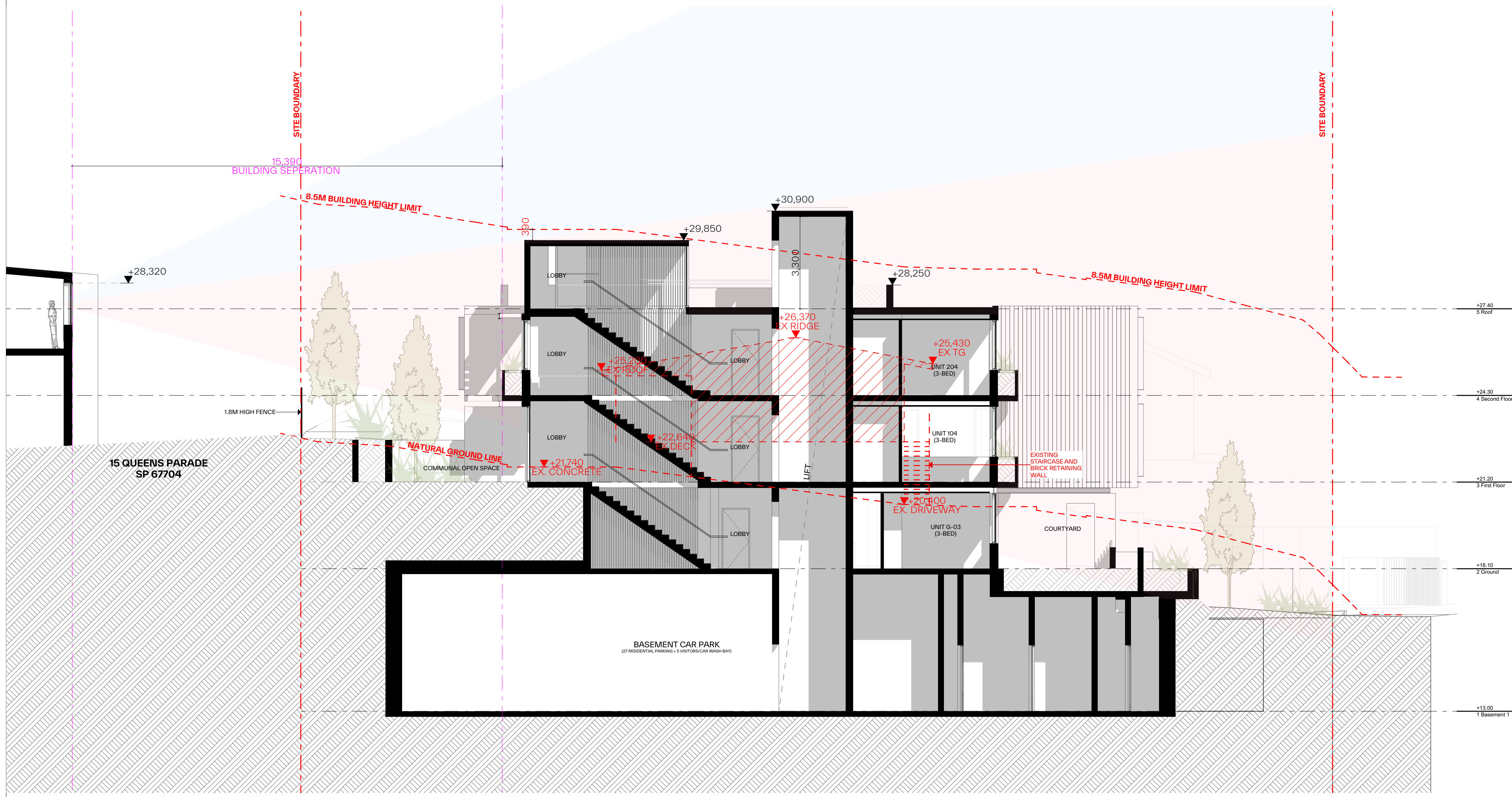
SECTION 03

1:100



SECTION 05

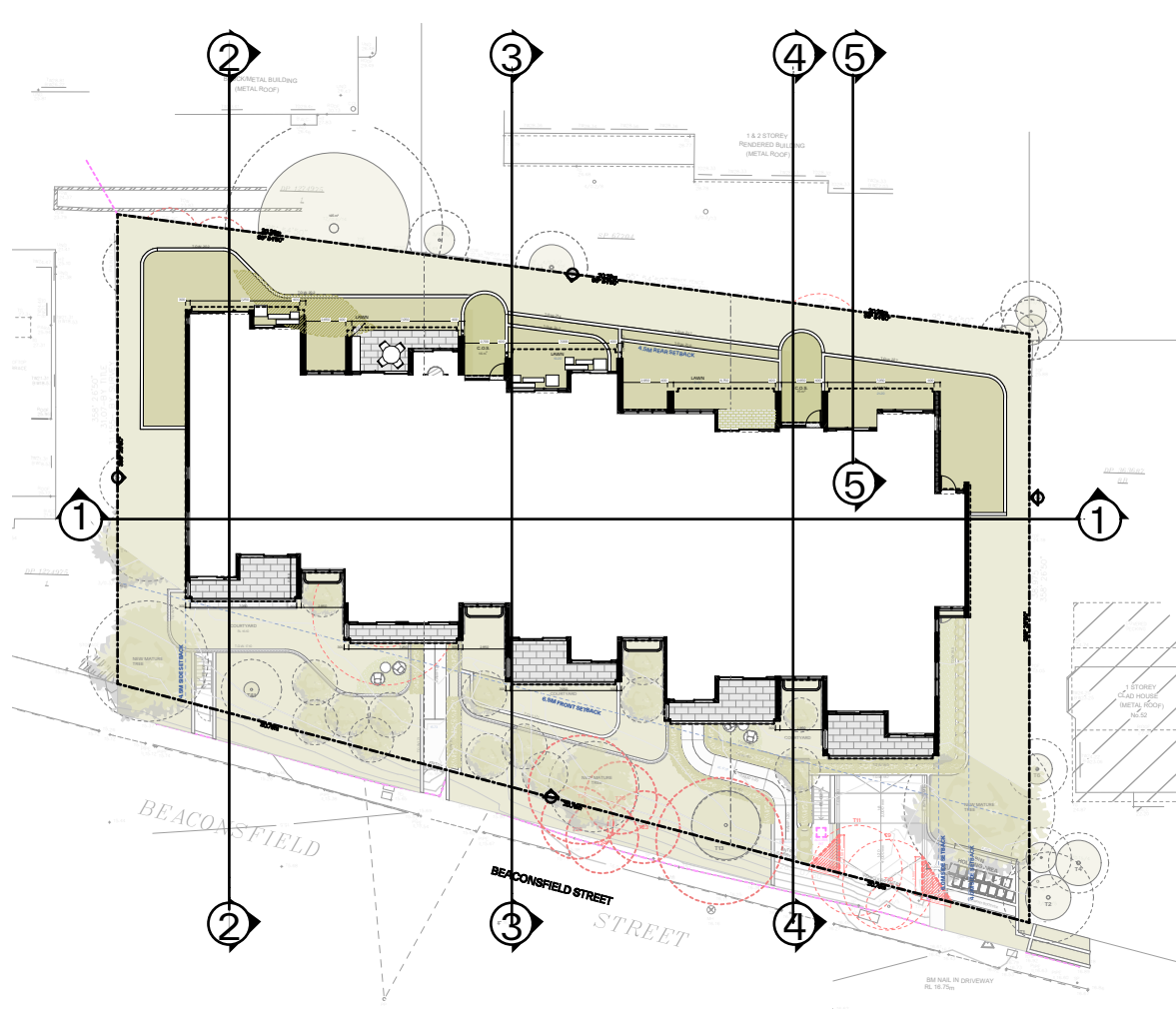
1:100



SECTION 04

1:100

northern beaches council
THIS PLAN IS TO BE READ IN CONJUNCTION WITH THE CONDITIONS OF DEVELOPMENT CONSENT
 DA2023/1869



KEY PLAN @1:500

GENERAL NOTES:

- ALL WORKS TO COMPLY WITH BUILDING CODE OF AUSTRALIA, REQUIREMENTS OF RELEVANT STATUTORY AUTHORITIES / LOCAL GOVERNMENT & RELEVANT AUSTRALIAN BUILDING STANDARDS
- DRAWINGS FOR THE PURPOSES OF DA ONLY (NOT FOR CONSTRUCTION) - FURTHER CONSULTANT/AUTHORITY COORDINATION WILL BE REQUIRED AT OC STAGE WHICH MAY IMPACT ON DESIGN AND PLANNING LAYOUTS
- ARCHITECTURAL PLANS TO BE READ IN CONJUNCTION WITH CONSULTANTS DRAWINGS, SPECIFICATIONS & REPORTS
- COPYRIGHT OF DESIGN SHOWN HEREON IS RETAINED BY PBD ARCHITECTS AND AUTHORITY IS REQUIRED FOR ANY REPRODUCTION
- AREA SCHEDULES SUPPLIED ARE APPROXIMATE ONLY - FUTURE ALLOWANCE FOR VERTICAL SERVICE DUCTS, STRUCTURAL WALL SYSTEMS AND CONSULTANT INPUT WILL BE REQUIRED

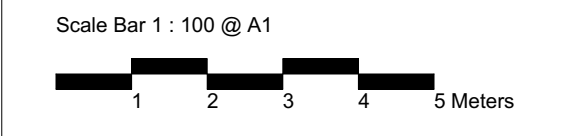
LEGEND:

- AW AWNING
- AH ACCESS HATCH
- AC A/C CONDENSER UNITS
- FH FIRE HYDRANT
- FHR FIRE HOSE REEL
- FS FIRE STAIRS
- GC GARBAGE CHUTE
- HW HIGHLIGHT WINDOW
- MV MECHANICAL RISER TO FUTURE DETAIL
- MB MAILBOX TO FUTURE DETAIL
- R 240L RECYCLING BIN
- SK SKYLIGHT
- ST STORAGE
- HWU HOT WATER UNITS

MATERIALS LEGEND:

- AFG ALUMINIUM FRAMED GLAZING
- LV ALUMINIUM ELLIPTICAL FIXED LOUVERS
- AW AWNING (TO FUTURE DETAIL)
- CONC CONCRETE
- FB FACE BRICK
- GB FRAMELESS TOUCHED GLASS BALUSTRADE (TO BCA/AUS STANDARDS)
- MB METAL BALUSTRADE
- MC METAL CLADDING
- FCE METAL FENCING (TO FUTURE SELECTION)
- PC COMPOSITE PANEL CLADDING
- PSK PRIVACY SCREEN (TO FUTURE SELECTION)
- PTX PAINT FINISH TYPEX
- RD ROLLER DOOR
- RP RIVER PEBBLES
- RW RENDERED FINISH/SELECTED PAINT FINISH
- TC TIMBER CLADDING
- VB EXTERNAL VENETIAN BLINDS

Issue	Date	Description
B	7/06/2024	AMENDED DEVELOPMENT APPLICATION
C	29/06/2024	AMENDED DEVELOPMENT APPLICATION
D	12/06/2024	AMENDED DEVELOPMENT APPLICATION



CLIENT:
JAK Newport Pty Ltd

101

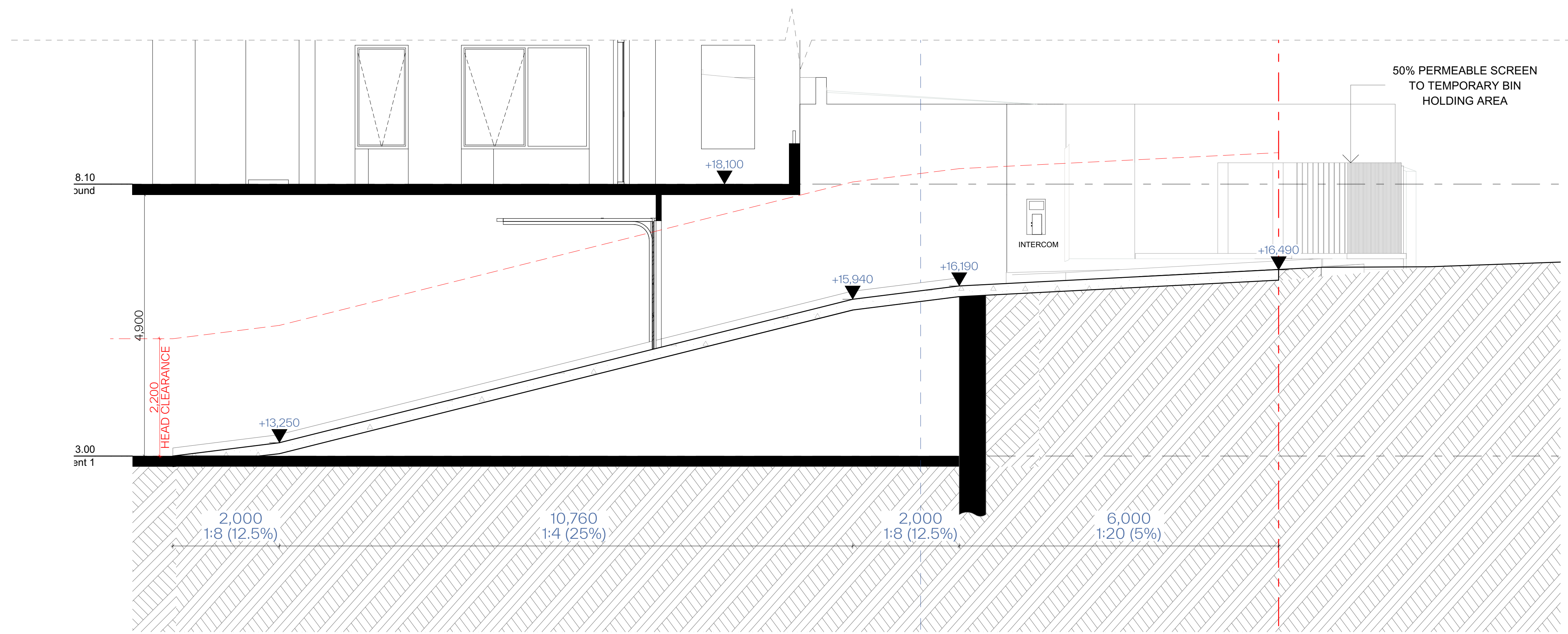
pbd architects

P - 02 9698 8140
 E - info@pbdarchitects.com.au
 W - pbdarchitects.com.au
 Level 2, 52 Albion Street,
 Surry Hills NSW 2010
 ABN 36 147 035 550
 Incorporated Architect:
 Paul Buljevic - NSW 7768

PROJECT:
RESIDENTIAL FLAT BUILDING - KENZA
54 - 58 BEACONSFIELD STREET NEWPORT NSW

DRAWING TITLE:
Section Sheet 2

DRAWING BY: AS	CHECKED BY: KL	DATE: 17/06/2024
SCALE: 1:50@A1	DRAWING NO: DA301	ISSUE: D
PROJECT NO: 2311		



Driveway Section

1:50

GENERAL NOTES:

- ALL WORKS TO COMPLY WITH BUILDING CODE OF AUSTRALIA, REQUIREMENTS OF RELEVANT STATUTORY AUTHORITIES / LOCAL GOVERNMENT & RELEVANT AUSTRALIAN BUILDING STANDARDS
- DRAWINGS FOR THE PURPOSES OF DA ONLY (NOT FOR CONSTRUCTION) - FURTHER CONSULTANT / AUTHORITY COORDINATION WILL BE REQUIRED AT CC STAGE WHICH MAY IMPACT ON DESIGN AND PLANNING LAYOUTS
- ARCHITECTURAL PLANS TO BE READ IN CONJUNCTION WITH CONSULTANTS DRAWINGS, SPECIFICATIONS & REPORTS
- COPYRIGHT OF DESIGN SHOWN HEREON IS RETAINED BY PBD ARCHITECTS AND AUTHORITY IS REQUIRED FOR ANY REPRODUCTION
- AREA SCHEDULES SUPPLIED ARE APPROXIMATE ONLY - FUTURE ALLOWANCE FOR VERTICAL SERVICE DUCTS, STRUCTURAL WALL SYSTEMS AND CONSULTANT INPUT WILL BE REQUIRED

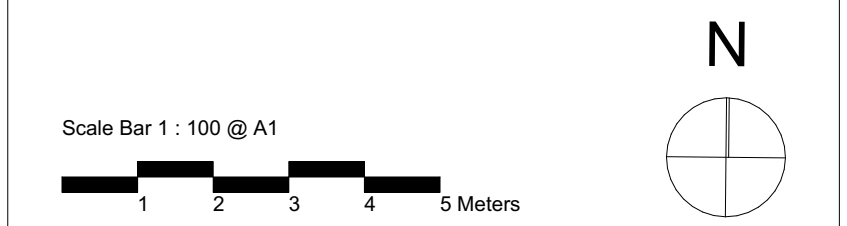
LEGEND:

- AW AWNING
- AH ACCESS HATCH
- AC A/C CONDENSER UNITS
- FH FIRE HYDRANT
- FHR FIRE HOSE REEL
- FS FIRE STAIRS
- GC GARBAGE CHUTE
- HW HIGHLIGHT WINDOW
- MV MECHANICAL RISER TO FUTURE DETAIL
- MB MAILBOX TO FUTURE DETAIL
- R 240L RECYCLING BIN
- SK SKYLIGHT
- ST STORAGE
- HWU HOT WATER UNITS

MATERIALS LEGEND:

- AFG ALUMINIUM FRAMED GLAZING
- LV ALUMINIUM ELLIPTICAL FIXED LOUVERS
- AW AWNING (TO FUTURE DETAIL)
- CONC CONCRETE
- FB FACE BRICK
- GB FRAMELESS TOUCHED GLASS BALUSTRADE (TO BCA/AUS STANDARDS)
- MB METAL BALUSTRADE
- MC METAL CLADDING
- FCE METAL FENCING (TO FUTURE SELECTION)
- PC COMPOSITE PANEL CLADDING
- PSK PRIVACY SCREEN (TO FUTURE SELECTION)
- PTX PAINT FINISH TYPE
- RD ROLLER DOOR
- RP RIVER PEBBLES
- RW RENDERED FINISH/SELECTED PAINT FINISH
- TC TIMBER CLADDING
- VB EXTERNAL VENETIAN BLINDS

Issue	Date	Description
A	28/10/2023	DEVELOPMENT APPLICATION
B	7/02/2024	AMENDED DEVELOPMENT APPLICATION
C	29/05/2024	AMENDED DEVELOPMENT APPLICATION
D	12/06/2024	AMENDED DEVELOPMENT APPLICATION
E	20/08/2024	AMENDED DEVELOPMENT APPLICATION



CLIENT:
JAK Newport Pty Ltd

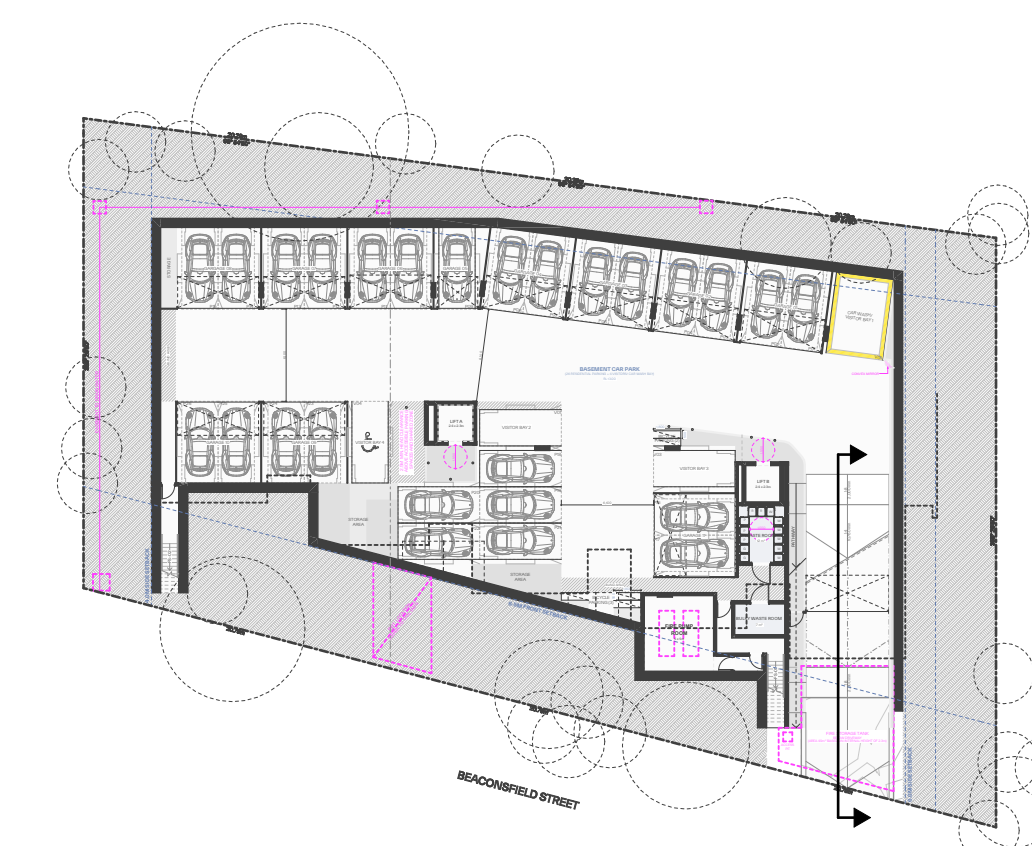
P - 02 9698 8140
 E - info@pbdarchitects.com.au
 W - pbdarchitects.com.au
 Level 2, 52 Albion Street,
 Sunny Hills NSW 2100
 ABN 36 147 035 550
 Nominated Architect:
 Paul Buljevic - NSW 7768

PROJECT:
RESIDENTIAL FLAT BUILDING - KENZA
54 - 58 BEACONSFIELD STREET NEWPORT NSW

DRAWING TITLE:
Driveway Section

DRAWING BY: AS	CHECKED BY: KL	DATE: 20/08/2024
SCALE: 1:500, 1:50@A1	DRAWING NO: DA302	ISSUE: E
PROJECT NO: 2311		

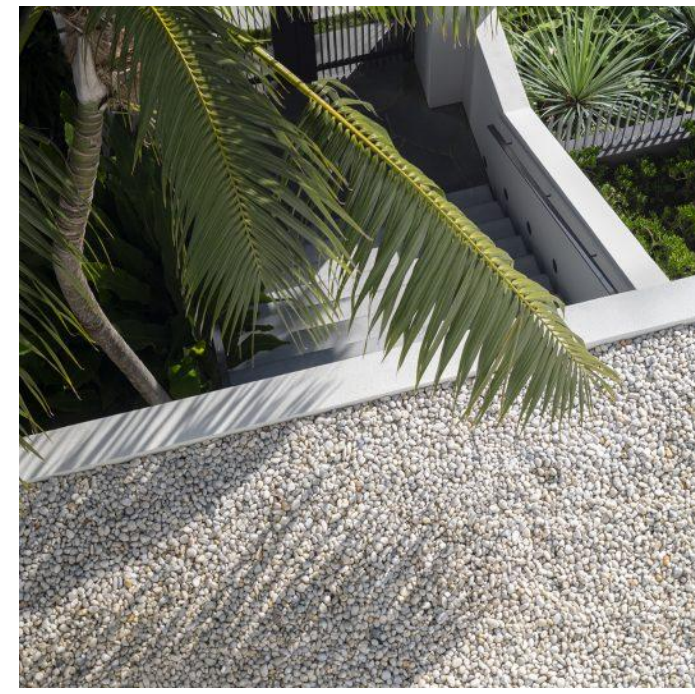
THIS PLAN IS TO BE READ IN CONJUNCTION WITH THE CONDITIONS OF DEVELOPMENT CONSENT
 DA2023/1869



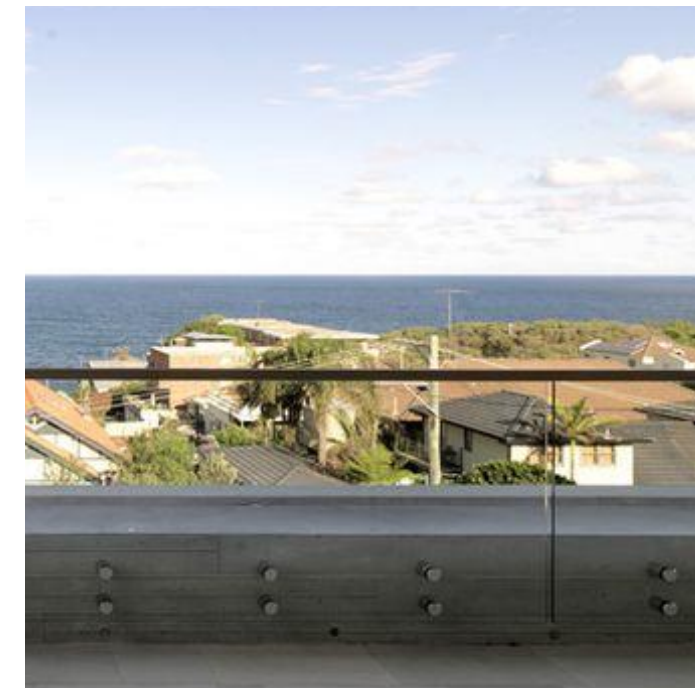
1 Basement Plan 1:500



AFG
ALUMINIUM FRAME GLAZING - WHITE



GR
GRAVEL BALLASTED ROOF



MB2
GLASS BALUSTRADE



CONC
NATURAL OFF-FORM CONCRETE



MC
METAL VERTICAL BATTENS POWDERCOATED WHITE OR EQUIVALENT



MR
METAL PERGOLA STRUCTURE (ABOVE SECOND FLOOR BALCONIES)



GENERAL NOTES:

- ALL WORKS TO COMPLY WITH BUILDING CODE OF AUSTRALIA, REQUIREMENTS OF RELEVANT STATUTORY AUTHORITIES / LOCAL GOVERNMENT & RELEVANT AUSTRALIAN BUILDING STANDARDS
- DRAWINGS FOR THE PURPOSES OF DA ONLY (NOT FOR CONSTRUCTION) - FURTHER CONSULTANT/AUTHORITY COORDINATION WILL BE REQUIRED AT CC STAGE WHICH MAY IMPACT ON DESIGN AND PLANNING LAYOUTS
- ARCHITECTURAL PLANS TO BE READ IN CONJUNCTION WITH CONSULTANTS DRAWINGS, SPECIFICATIONS & REPORTS
- COPYRIGHT OF DESIGN SHOWN HEREON IS RETAINED BY PBD ARCHITECTS AND AUTHORITY IS REQUIRED FOR ANY REPRODUCTION
- AREA SCHEDULES SUPPLIED ARE APPROXIMATE ONLY - FUTURE ALLOWANCE FOR VERTICAL SERVICE DUCTS, STRUCTURAL WALL SYSTEMS AND CONSULTANT INPUT WILL BE REQUIRED

LEGEND:

- AW AWNING
- AH ACCESS HATCH
- AC A/C CONDENSER UNITS
- FH FIRE HYDRANT
- FHR FIRE HOSE REEL
- FS FIRE STAIRS
- GC GARBAGE CHUTE
- HVW HIGHLIGHT WINDOW
- MV MECHANICAL RISER TO FUTURE DETAIL
- MB MAILBOX TO FUTURE DETAIL
- R 240L RECYCLING BIN
- SK SKYLIGHT
- ST STORAGE
- HWU HOT WATER UNITS

MATERIALS LEGEND:

- AFG ALUMINIUM FRAMED GLAZING
- LV ALUMINIUM ELLIPTICAL FIXED LOUVERS
- AW AWNING (TO FUTURE DETAIL)
- CONC CONCRETE
- FB FACE BRICK
- GB FRAMELESS TOUCHED GLASS BALUSTRADE (TO BCA/AUS STANDARDS)
- MB METAL BALUSTRADE
- MC METAL CLADDING
- FCE METAL FENCING (TO FUTURE SELECTION)
- PC COMPOSITE PANEL CLADDING
- PSK PRIVACY SCREEN (TO FUTURE SELECTION)
- PTX PAINT FINISH TYPE X
- RD ROLLER DOOR
- RP RIVER PEBBLES
- RW RENDERED FINISH/SELECTED PAINT FINISH
- TC TIMBER CLADDING
- VB EXTERNAL VENETIAN BLINDS


THIS PLAN IS TO BE READ IN CONJUNCTION WITH THE CONDITIONS OF DEVELOPMENT CONSENT
DA2023/1869

Issue	Date	Description
A	28/10/2023	DEVELOPMENT APPLICATION
B	7/02/2024	AMENDED DEVELOPMENT APPLICATION
C	29/05/2024	AMENDED DEVELOPMENT APPLICATION
D	12/06/2024	AMENDED DEVELOPMENT APPLICATION

CLIENT:
JAK Newport Pty Ltd


pbd architects
 P - 02 9698 8140
 E - info@pbdarchitects.com.au
 W - pbdarchitects.com.au
 Level 2, 52 Albion Street,
 Surry Hills NSW 2010
 ABN 36 147 035 550
 Registered Architect:
 Paul Buljevic - NSW 7768

PROJECT:
RESIDENTIAL FLAT BUILDING - KENZA
54 - 58 BEACONSFIELD STREET NEWPORT NSW

DRAWING TITLE:
Schedule of Colours and Materials

DRAWING BY: AS	CHECKED BY: KL	DATE: 17/06/2024
SCALE: NTS	DRAWING NO: DA400	ISSUE: D
PROJECT NO: 2311		



MB1
METAL FENCE/ BALUSTRADE
LIGHT BRONZE FINISH (GROUND FLOOR TERRACE)



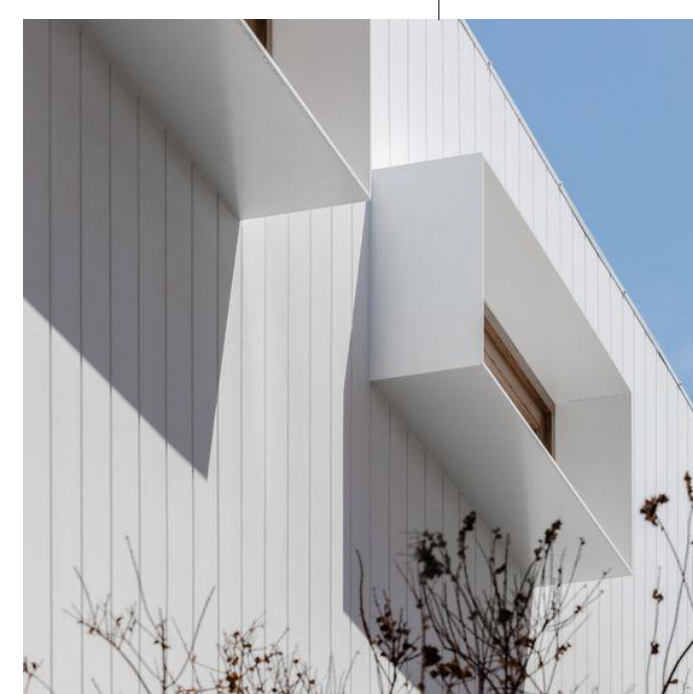
ST2
NATURAL LIMESTONE PAVERS (FOOTPATH/
TERRACE)



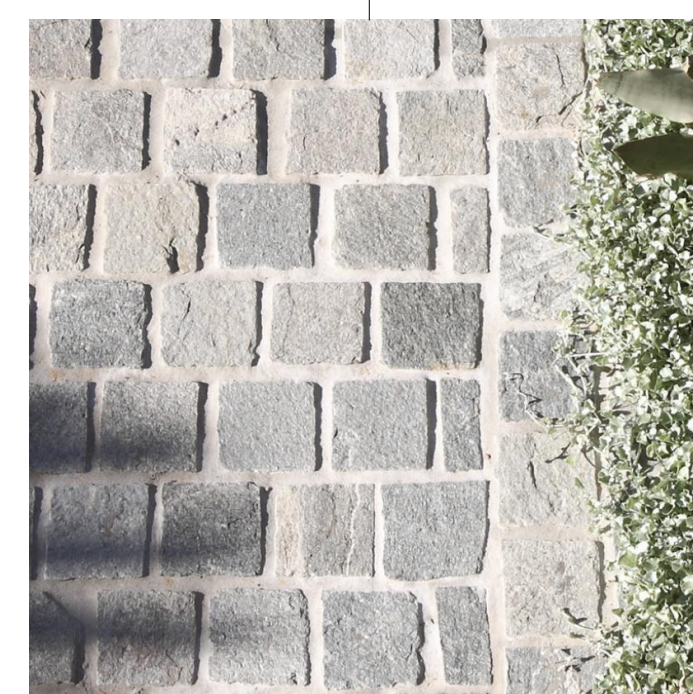
ST3
CONCRETE STEPPING STONE
(REFER TO LANDSCAPED ARCHITECT'S PLAN)



ST1
NATURAL STONE CLADDING
ECO-OUTDOOR CANYONFELL OR EQUIVALENT



WB
WEATHERBOARD CLADDING
JAMES HARDIE AXON OR EQUIVALENT



ST4
COBBLESTONE PAVERS (DRIVEWAY)
ECO OUTDOOR ENDICOTT OR EQUIVALENT