

notes

To be read in conjunction with hydraulic engineer drawings.

Legend

- Roof:**
 rs corrugated copper sheeting, cappings, etc
 g copper gutters
 dp round copper down pipes
- Sortit:**
 fc set fibre cement
 sl plywood soffit lining
- Solar Panels:**
 ta Type A: Solar hot water panels with remote storage
 tb Type B: Photovoltaic cells

Walls:

- Extermit:**
 fer(c) Fine cement render to concrete. (Colour: Porters, "mineral" or similar)
 s Coursed sandstone
- Intermit:**
 rm Rendered masonry
 tm Tiles on masonry

Floors:

- st Stone tiling
 sp Stone paving
 hd Hardwood decking

Ceilings:

- pb Set plaster board

Windows:

- stw Sliding timber windows
 fg fixed glass

Doors:

- std Sliding timber framed doors
 gd panel lift garage door

Louvers/Screens:

- hss Hardwood timber slatted screen
 fml Fixed metal louvers

ABSA
 Ass# 20209 Cert # 25157751
 Sign *E. Zinn*
 Date 17 Feb 2010

Material Specification	RT 18 silicon metal
Roof colour	Met SA - 3175 - 070
External cavity brick work	RT 18 sandstone
External wall colour	Dark SA - 070
Total Ventilation System value to all windows	Uw 5.60 S10C-07A
Weatherstripping to doors and windows	NFRC - 48hrs
	1hr

OCT 09 A DEVELOPMENT APP.

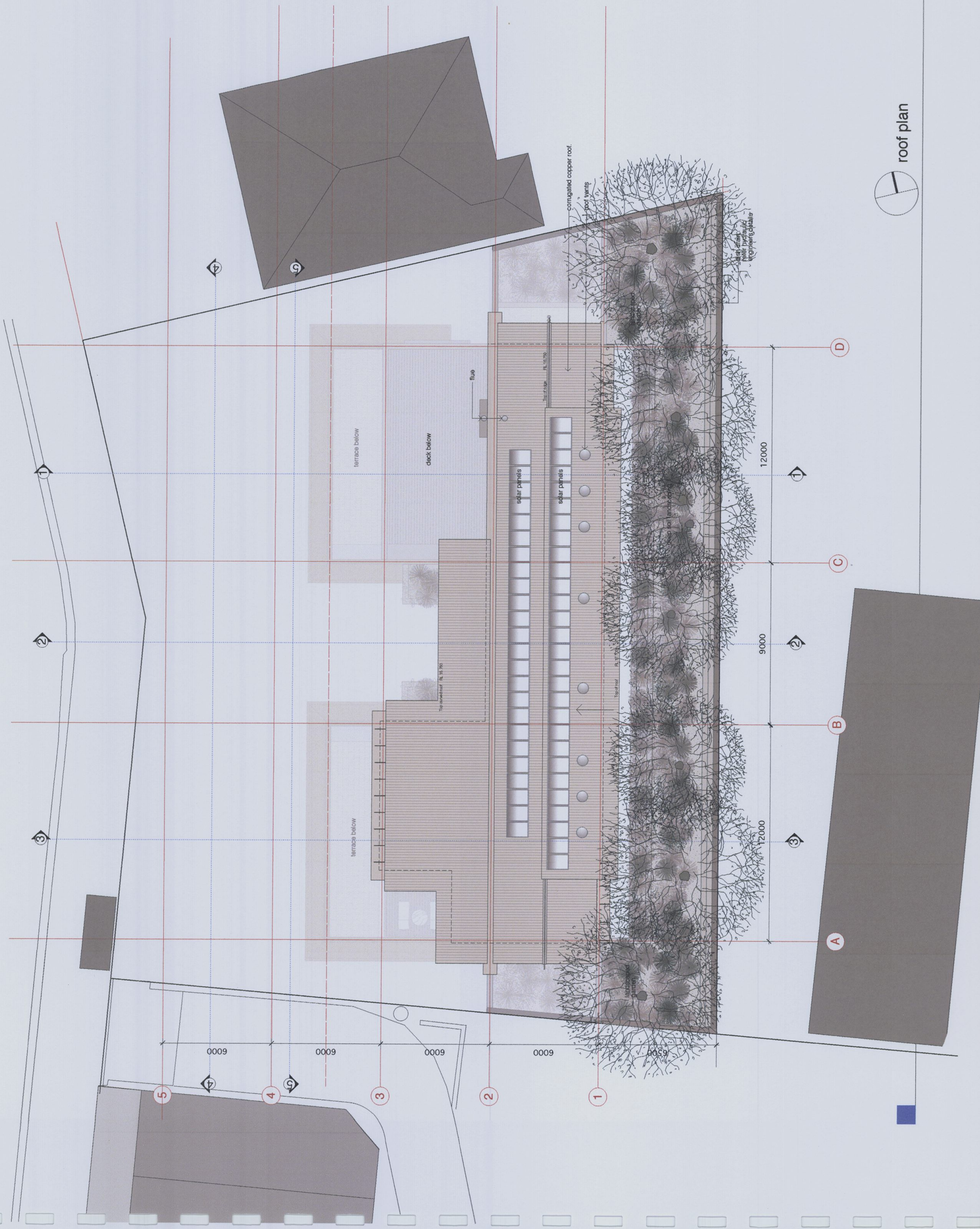
date issue

amendments

drawing : roof plan
 dwg no. : DA 09
 scale : 1:100@A1 / 1:200@A3
 date : OCT 09
 drawn :
 checked :

1112-1118 Barronlopy Road
 Palm Beach

LESUIK ARCHITECTS PTY LTD
 the studio, 1118 barronlopy road palm beach new
 po box 30 palm beach new 21 08
 telephone 612 9974 1010 faxsimile 612 9974 5502
 email lesuikarchitects@bigpond.com



roof plan