

REMOVE JOINERY TO PROVIDE REQUIRED CIRCULATION SPACE FOR DOOR TO BEDROOM
INSTALL NEW BASIN AND LEVER HANDLE TAP SET

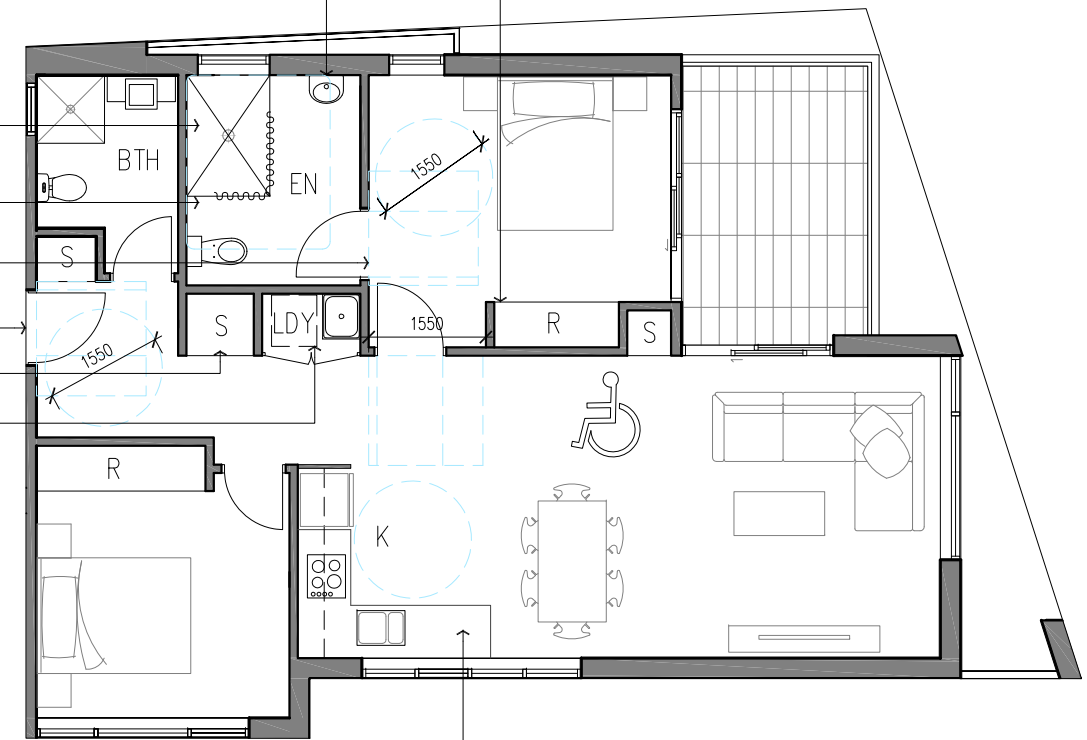
REMOVE BATHTUB, INSTALL PORTABLE SHOWER HEAD AND FOLDING SEAT. SLIP RESISTANT FLOOR SURFACE

INSTALL GRAB RAIL TO SHOWER AND TOILET AREA AS PER AS4299

RELOCATE DOOR TO PROVIDE REQUIRED CIRCULATION SPACE

DOOR MIN 850mm CLEAR OPENING

STORAGE/LINEN WITH ADJUSTABLE SHELVES (MIN 600mm)
MIN 1300mm CLEARANCE IN FRONT OF APPLIANCES



MODIFY JOINERY TO ACCOMMODATE ADJUSTABLE HEIGHT BENCH (MIN 800mm)

○ PRE-ADAPTED LAYOUT
UNIT 1, 3 & 5

○ POST-ADAPTED LAYOUT

DEVELOPMENT APPLICATION A

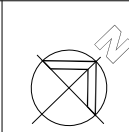
REV.	DESCRIPTION	DATE	REV.	DESCRIPTION	DATE
-	ISSUE FOR DEVELOPMENT APPLICATION	DEC 2015			
A	UNIT 5 LABELLED ADAPTABLE UNIT	MAY 2016			

**ARH WARRIEWOOD
PTY LTD**

STEPHEN BOWERS ARCHITECTS
ABN 64 087 958 423
REG ARCHITECT: STEPHEN BOWERS (5810)
SUITE 91, 26-32 FIRBANKA ROAD, JONES BAY WHARF
PYRMONT NSW 2009
p 02 8212 9705 m 0414 780 650
email: stephen.bowers@stephenbowersarchitects.com
www.stephenbowersarchitects.com

● **STEPHEN BOWERS ARCHITECTS**
This drawing is protected by copyright. Reproduction or publication of the whole or part of the drawing without a license of the owner of the copyright is an infringement of copyright.
Do not scale drawings. Verify all dimension on site. Report any discrepancies in documents to Architect.

Address
**53C WARRIEWOOD ROAD
WARRIEWOOD
NSW 2102**



Drawing Title
ADAPTABLE UNIT LAYOUT

Scale 1:50(A1)/1:100(A3) Date DEC 2015
Drawn by LN Check by S.B
Drawing No. DA-029 Revision A
Cad file path.
J:\53C Warriewood Road, Warriewood\DA_Built Form\Cad Drawings