

In accepting and utilising this document the recipient agrees that SJB Architecture (NSW) Pty. Ltd. ACN 081 094 724 T/A SJB Architects, retain all common law, statutory law and other rights including copyright and intellectual property rights. The recipient agrees not to use this document for any purpose other than its intended use; to waive all claims against SJB Architects resulting from unauthorised changes; or to reuse the document on other projects without the prior written consent of SJB Architects. Under no circumstances shall transfer of this document be deemed a sale. SJB Architects makes no warranties of fitness for any purpose.

The Builder/Contractor shall verify job dimensions prior to any work commencing. Figured dimensions shall take precedence over scaled work.

Nominated Architects Adam Haddow 7188 John Pradel 7004

FOR APPROVAL

| Rev. | Date | Revision | By | Chk. |
|------|------|----------|----|------|
| Rev. | Date | Revision | | |

BASIX CHECKLIST

| FLOOR FINISHES - APARTMENTS | |
|-----------------------------|---------------------------------------------|
| LIVING ROOM | CERAMIC OR STONE TILES ON ACOUSTIC UNDERLAY |
| DINING ROOM | CERAMIC OR STONE TILES ON ACOUSTIC UNDERLAY |
| KITCHEN | CERAMIC OR STONE TILES ON ACOUSTIC UNDERLAY |
| BATHROOMS | CERAMIC OR STONE TILES ON ACOUSTIC UNDERLAY |
| LAUNDRY | CERAMIC OR STONE TILES ON ACOUSTIC UNDERLAY |
| BEDROOMS | CARPET (100% WOOL) ON UNDERLAY |
| ROBES | CARPET (100% WOOL) ON UNDERLAY |
| STUDY | CARPET (100% WOOL) ON UNDERLAY |
| BALCONY / TERRACE | CERAMIC TILES ON CONCRETE |

| FLOOR FINISHES - OTHER AREAS | |
|------------------------------|-------------------------------------------|
| RETAIL AREAS | CONCRETE FLOOR - BASE BUILDING SHELL |
| GYMNASIUM | NON STATIC CARPET TILES ON CONCRETE FLOOR |
| CARPARKS | TROWELLED CONCRETE FLOOR WITH SEALER |

| WALL TYPES - EXTERNAL | |
|-----------------------|---------------------------------------------------------------------------------------------------------------------|
| 1 | CONCRETE BLOCK - CEMENT RENDERED 110mm BLOCKWORK WALL + 50mm CAVITY + 64mm METAL STUD + 10mm PBOARD BRICK VENEER |
| 2 | FACE BRICK - LIGHTWEIGHT STUD WALL TO INSIDE - PBOARD PREFINISHED PRECAST CONCRETE |
| 3 | 150mm CONCRETE PANEL + 25mm CAVITY + 64mm METAL STUD + 10mm PBOARD STONE CLADDING |
| 4 | 20mm STONE CLADDING ADHESIVE FIXED TO 110mm BLOCKWORK WALL + 50mm CAVITY + 64mm METAL STUD + 10mm PBOARD |

| ROOF TYPES - EXTERNAL | |
|-----------------------|----------------------------------------------------------------------------------------|
| 1 | INSITU CONCRETE ROOF THERMAL INSULATION ABOVE - WATERPROOF MEMBRANE - STONE PEBBLES |
| 2 | METAL DECK ROOFING KLP-LOK COLORBOND METAL DECK ROOF WITH INSULATION BELOW |

| CEILING HEIGHTS - APARTMENTS | |
|------------------------------|----------------------------------------------------|
| LIVING ROOM | 2.7m TYPICAL - 3.3m AT GROUND LEVEL OF BLDGS B+C+D |
| DINING ROOM | 2.7m TYPICAL - 3.3m AT GROUND LEVEL OF BLDGS B+C+D |
| KITCHEN | 2.4m TYPICAL - 3.0m AT GROUND LEVEL OF BLDGS B+C+D |
| BATHROOMS | 2.4m TYPICAL |
| LAUNDRY | 2.4m TYPICAL |
| BEDROOMS | 2.7m TYPICAL - 3.3m AT GROUND LEVEL OF BLDGS B+C+D |
| ROBES | 2.4m TYPICAL |
| STUDY | 2.7m TYPICAL - 3.3m AT GROUND LEVEL OF BLDGS B+C+D |

| CEILING HEIGHTS - OTHER AREAS | |
|-------------------------------|----------------------------------------------------------------|
| RETAIL AREAS | VARIABLES IN HEIGHT - TYPICALLY 3.8m AT GROUND FLOOR |
| GYMNASIUM | 3.0m TYPICAL |
| CARPARKS | TYPICALLY 3.0m TO BASEMENT 01 TYPICALLY 2.6m TO BASEMENT 02 |

Project
FRESHWATER VILLAGE
 Albert Street & Lawrence St
 Freshwater NSW, 2096

Freshwater Village Developments Pty Ltd

Drawing Name
Roof Plan

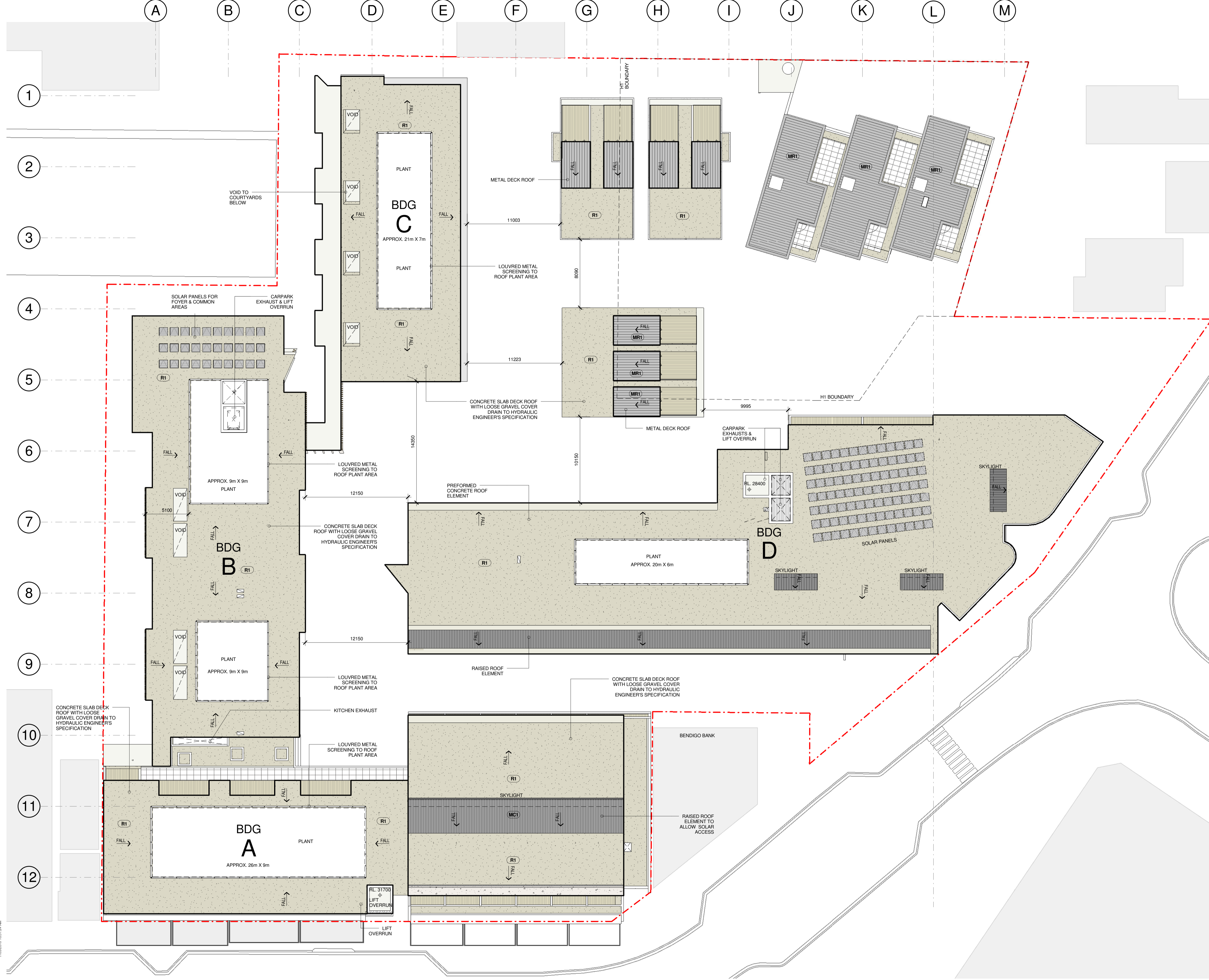


| Date | Scale | Sheet Size |
|----------|---------|------------|
| 05.07.10 | 1 : 200 | @ A1 |

| Reg No. | Drawn | Chk. |
|---------|-------|------|
| | JT/NH | JP |

| Job No. | Drawing No. | Revision |
|-------------|---------------|-----------|
| 4673 | A-0207 | 10 |

SJB Architects
 Level 2, 490 Crown St
 Surry Hills NSW
 2010 Australia
 T 61 2 9380 9911
 F 61 2 9380 9922
 www.sjb.com.au



7/05/2010 10:31:24 AM