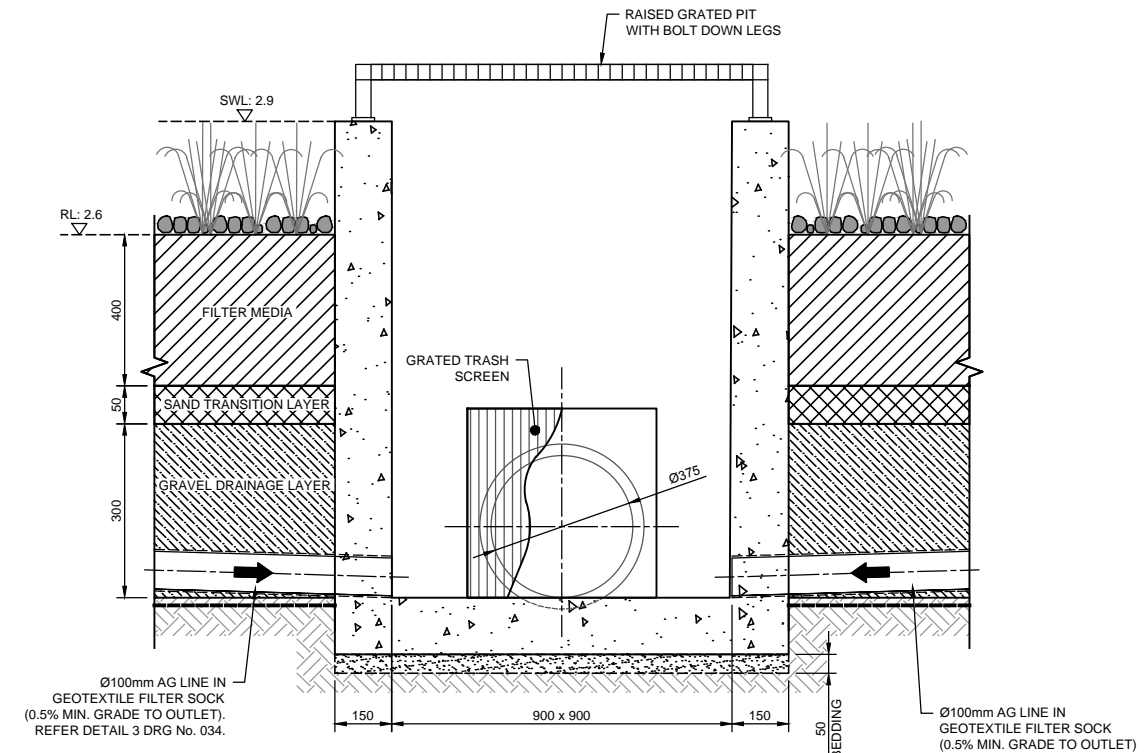


DETAIL 1
SCALE NTS



PIT 8.1 - DETAIL
DETAIL 2
SCALE NTS

REV	DATE	ISSUED FOR DEVELOPMENT APPLICATION	AMENDMENT DESCRIPTION
A	20.10.16	ISSUED FOR DEVELOPMENT APPLICATION	



Project: PROPOSED SUBDIVISION OF LOT 32 SECTION C D.P.5464 CIVIL AND SUBDIVISION WORKS

Principal: WOOLWICH PTY. LTD.
 Scale: AS SHOWN Date: 20.10.16 Council Ref: D.P.5464
 Datum: AHD L.G.A. NORTHERN BEACHES
 Calc's: D.Y. Drawn: E.F. Proj.Man: A.M. Client Ref:



ABN 77 050 209 991
 Level 4, Suite 400
 16-18 Cambridge St
 EPPING NSW 2121
 PO Box 233
 EPPING NSW 1710

ACN 050 209 991
 DX 4408 EPPING
 Tel. 9969-1855
 Fax. 9969-2341
 reception@craigandrhodes.com.au
 www.craigandrhodes.com.au
 © Craig & Rhodes



Drawing Title: BIO-RETENTION AND OSD BASIN DETAILS
 CR Ref: 063-16 Drawing Ref: 063-16C-DA-042
 Revision: A

DEVELOPMENT APPLICATION