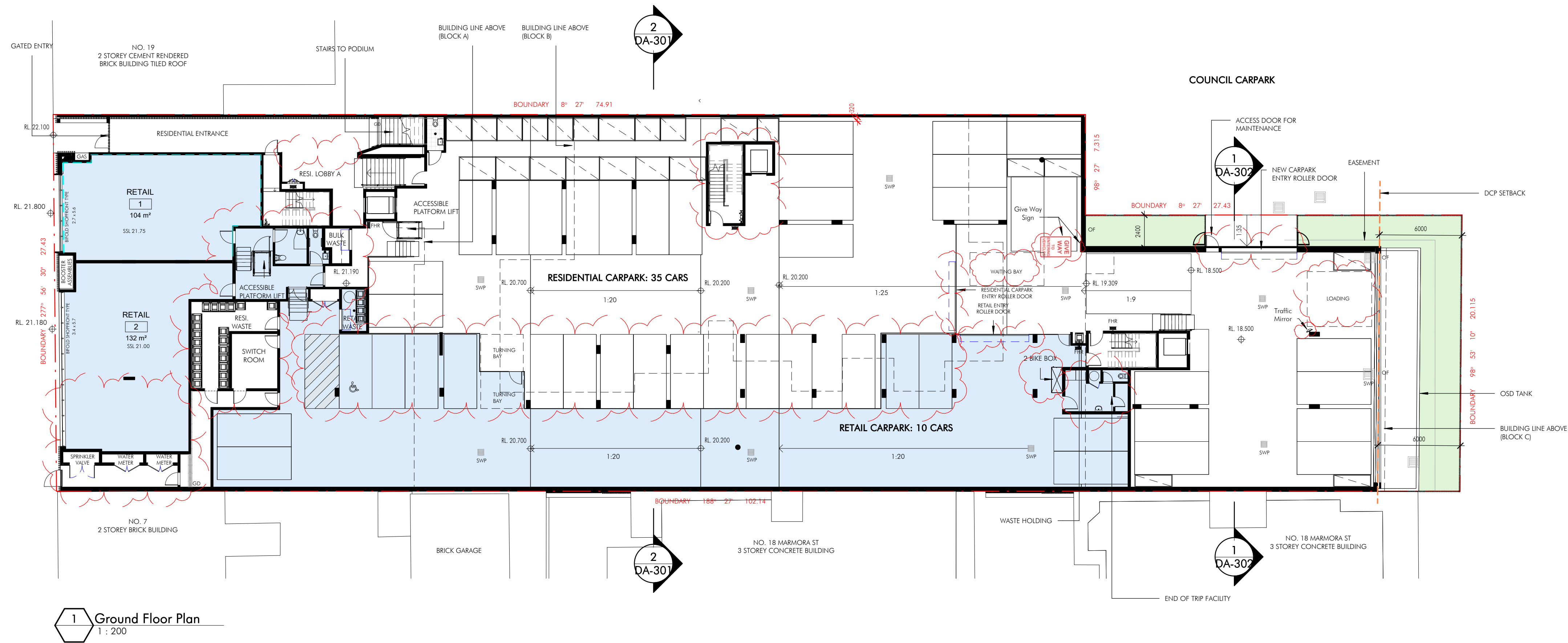


LAWRENCE STREET



1 Ground Floor Plan  
1:200

COLOUR LEGENDS

- RETAIL COMPONENTS
- PLANTERS

Carparking requirements :

- 1B (1/ apt) = 2 apt x 1 = 2
- 2B (1.2/ apt) = 14 apt x 1.2 = 17
- 3B (1.5/ apt) = 7 apt x 1.5 = 11

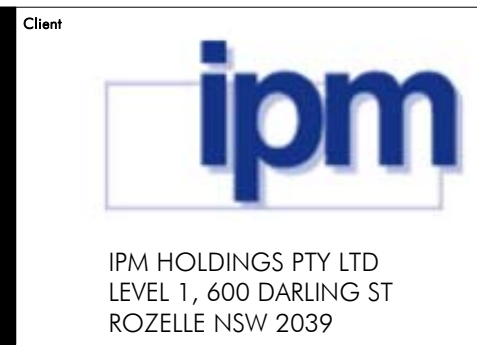
Residential parking required = 35  
Retail Parking required ( 1/ 16.4m<sup>2</sup> GFA ) = 15

Total required = 50

Total provision = 46 (35 residential + 10 retail)

\$4.55

9/19/2019 3:15:55 PM C:\VERTICAL\01\0001\_IPM Fresh Water\_S4-8-R16\_Detailed.dwg



Client  
Oceans Freshwater  
15 LAWRENCE ST FRESHWATER NSW 2096

Issue	Description	Date
BB	Draft S4.55 Revision	16.09.2019
AA	Draft S4.55	21.08.2019
D	DA ISSUE	21.08.18
C	DA ISSUE	26.04.18
B	DA ISSUE	18.12.17
A	DA ISSUE	6.12.17
P6	DRAFT DA	28.11.17
P5	DRAFT DA	21.11.17
P4	DRAFT DA	09.11.17
P3	DRAFT DA	06.11.17
P2	DRAFT DA	02.11.17
P1	DRAFT DA	28.10.17

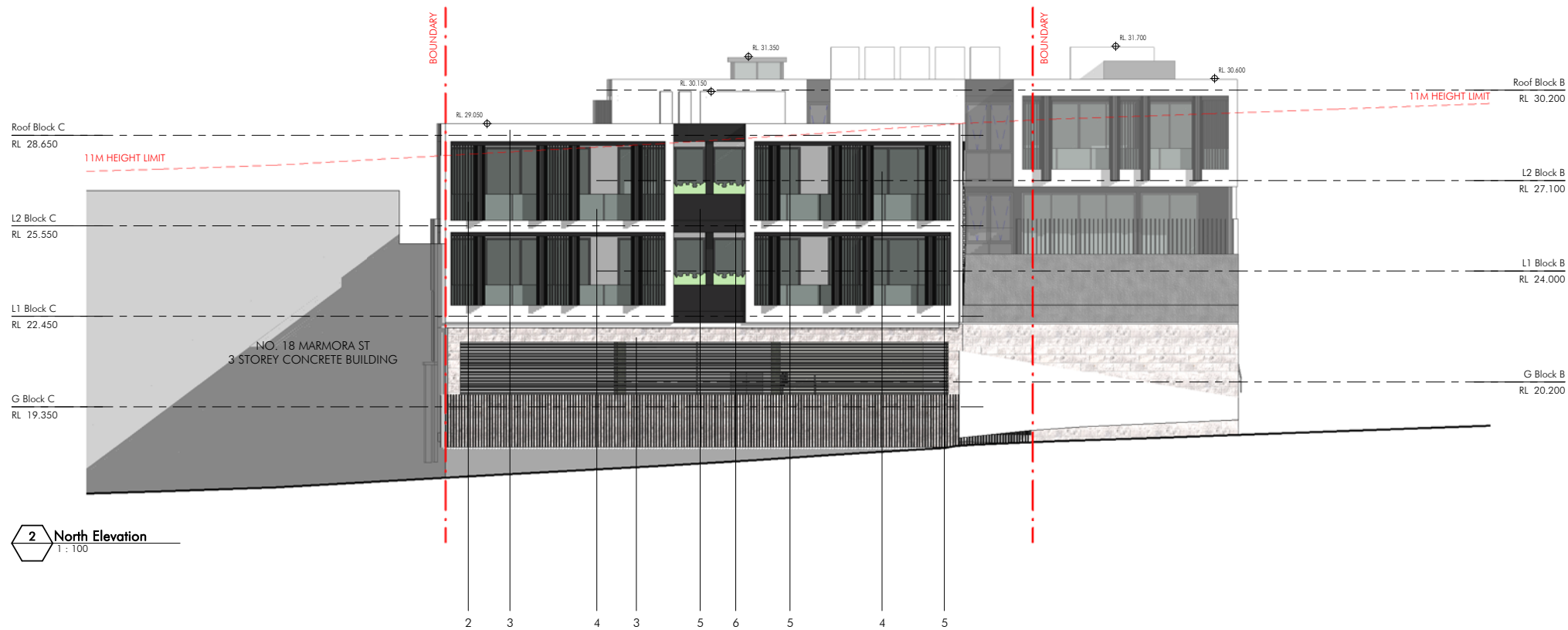
LEGEND

Title  
Scale  
Sheet Size  
Date  
Number

Ground Floor Plan  
1:200  
A1  
16.09.2019  
10524\_ DA-101

© copyright nettleton tribe partnership pty ltd

nettleton tribe partnership pty ltd ABN 58 161 683 122  
117 willoughby road crows nest nsw 2065  
t 02 9431 6431  
o sydney@nettletontribe.com.au w nettletontribe.com.au



1



2



3



4



5



6

**EXTERNAL FINISHES LEGEND**

1. TIMBER CLADDING
2. ALUMINIUM SCREENS - CHARCOAL FINISH
3. WHITE CEMENT PRECAST
4. CLEAR GLASS & BALUSTRADES
5. BLACK STEEL
6. CHARCOAL PAINTED PRECAST

\$ 4.55

9/17/2019 3:31:14 PM C:\MYTDC\0101\10524\_101\Finsh\_View\_24-8-R18\_DwgRev01.rvt

**Client**

IPM HOLDINGS PTY LTD  
LEVEL 1, 600 DARLING ST  
ROZELLE NSW 2039

**Project**

Oceans Freshwater  
15 LAWRENCE ST FRESHWATER NSW 2096

Issue	Description	Date
D	Draft S4.55 Revision	16.09.2019
C	Draft S4.55	21.08.2019
B	DA ISSUE	18.12.17
A	DA ISSUE	6.12.17
P4	DRAFT DA	28.11.17
P3	DRAFT DA	23.11.17
P2	DRAFT DA	02.11.17
P1	DRAFT DA	26.10.17

**LEGEND**

EXISTING BUILDING SHOWN DASHED

**Title**

North & Sout Elevations

**Scale**

0 0 0

**Sheet No**

10524\_ DA-201

**Date**

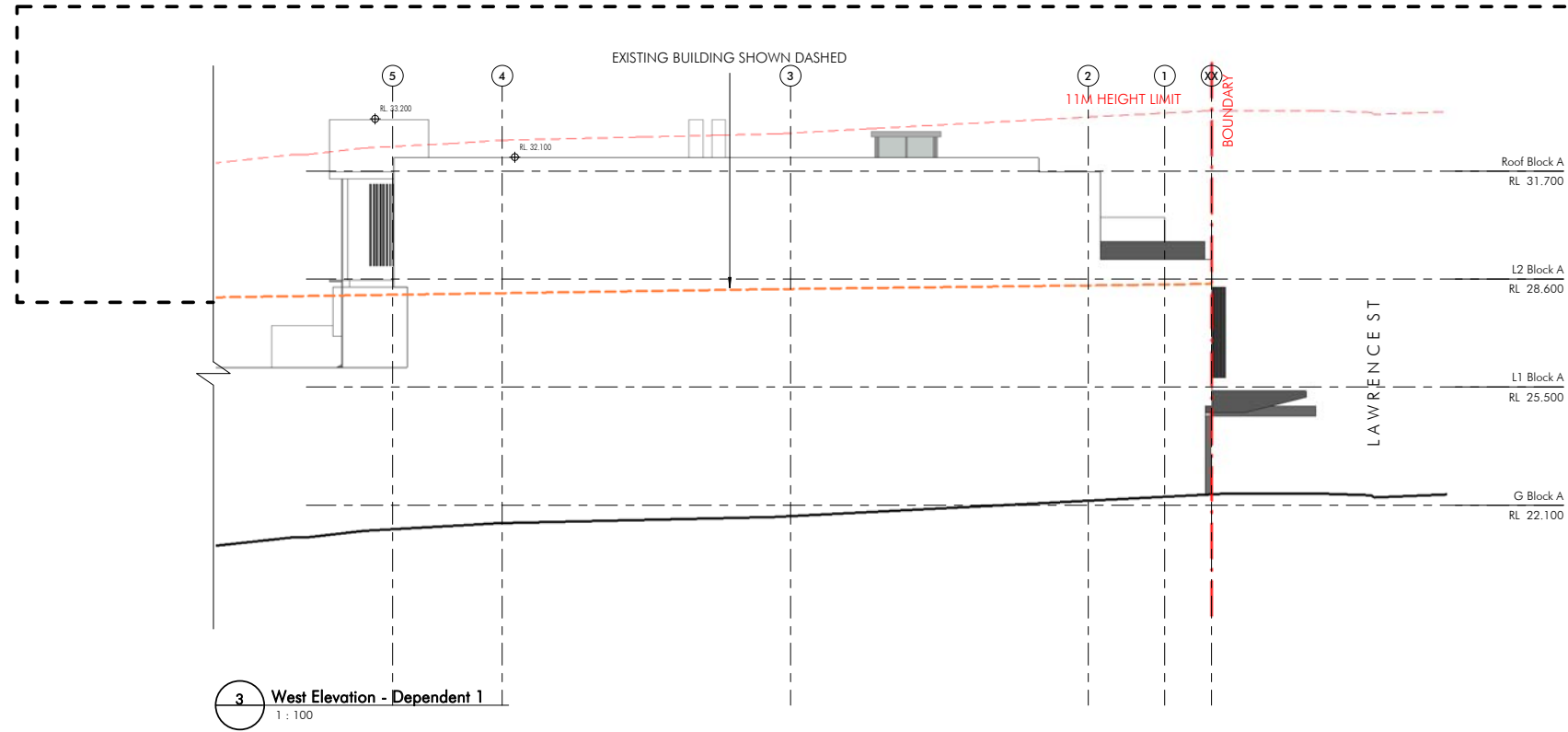
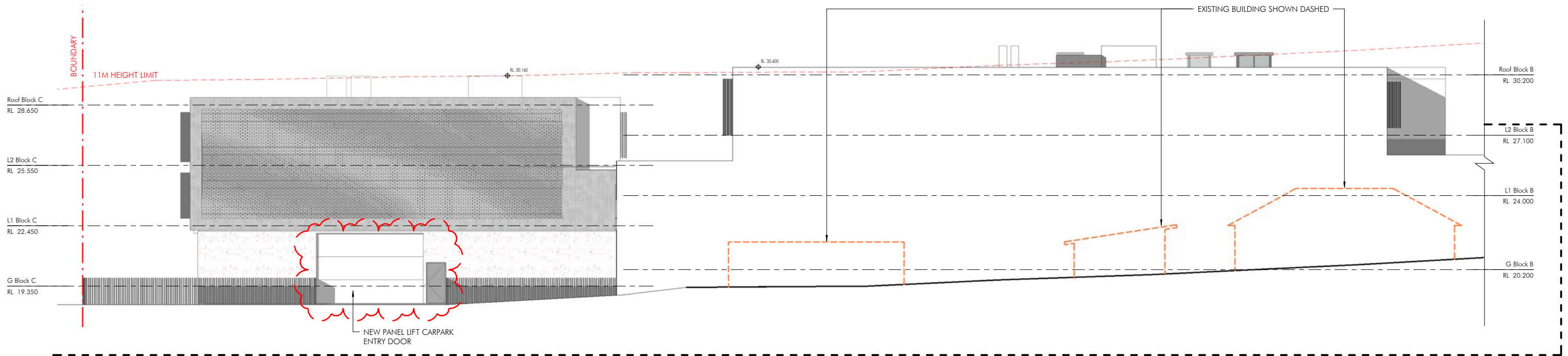
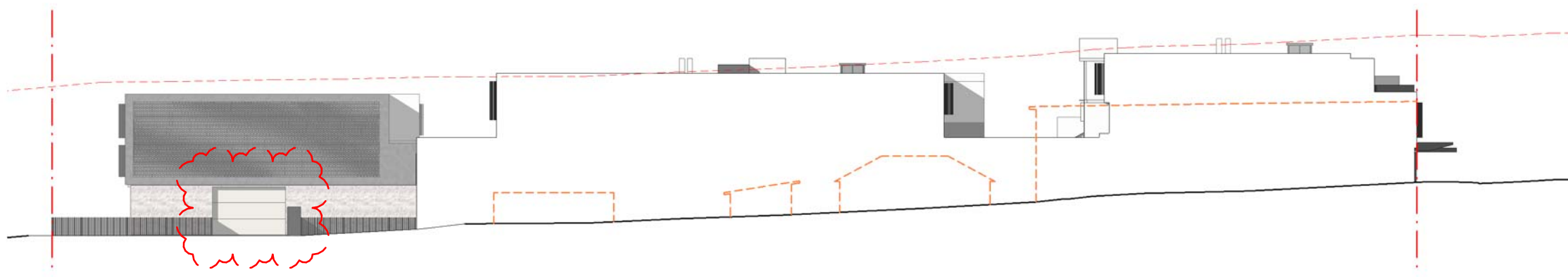
16.09.2019

**Number**

0 0 0

© copyright nettleton tribe partnership pty ltd

nettleton tribe partnership pty ltd ABN 58 161 683 122  
117 willoughby road crows nest nsw 2065  
1 02 9431 6431  
o sydney@nettletontribe.com.au w nettletontribe.com.au



**EXTERNAL FINISHES LEGEND**

1. TIMBER CLADDING
2. ALUMINIUM SCREENS - CHARCOAL FINISH
3. WHITE CEMENT PRECAST
4. CLEAR GLASS & BALUSTRADES
5. BLACK STEEL
6. CHARCOAL PAINTED PRECAST

3 West Elevation - Dependent 1  
1:100

S 4.55

9/17/2019 3:23:20 PM C:\MTE\DC\101\1024\_101\New\_View\_24-8-18\_Dwg\04.rvt

**Client**  
**ipm**  
IPM HOLDINGS PTY LTD  
LEVEL 1, 600 DARLING ST  
ROZELLE NSW 2039

**Project**  
Oceans Freshwater  
15 LAWRENCE ST FRESHWATER NSW 2096

Issue	Description	Date
D	Draft S4.55 Revision	16.09.2019
C	Draft S4.55	21.08.2019
B	DA ISSUE	18.12.17
A	DA ISSUE	6.12.17
P3	DRAFT DA	21.11.17
P2	DRAFT DA	02.11.17
P1	DRAFT DA	26.10.17

**LEGEND**  
- - - - - EXISTING BUILDING SHOWN DASHED

**Title**  
West Elevation  
**Scale**  
1:100  
**Sheet No**  
A1  
**Date**  
16.09.2019  
**Number**  
10524\_ DA-203  
0 0 0  
© copyright nettleton tribe partnership pty ltd

**nt nettletontribe**  
nettleton tribe partnership pty ltd ABN 58 161 683 123  
117 willoughby road crows nest nsw 2065  
1 02 9431 6431  
o sydney@nettletontribe.com.au w nettletontribe.com.au