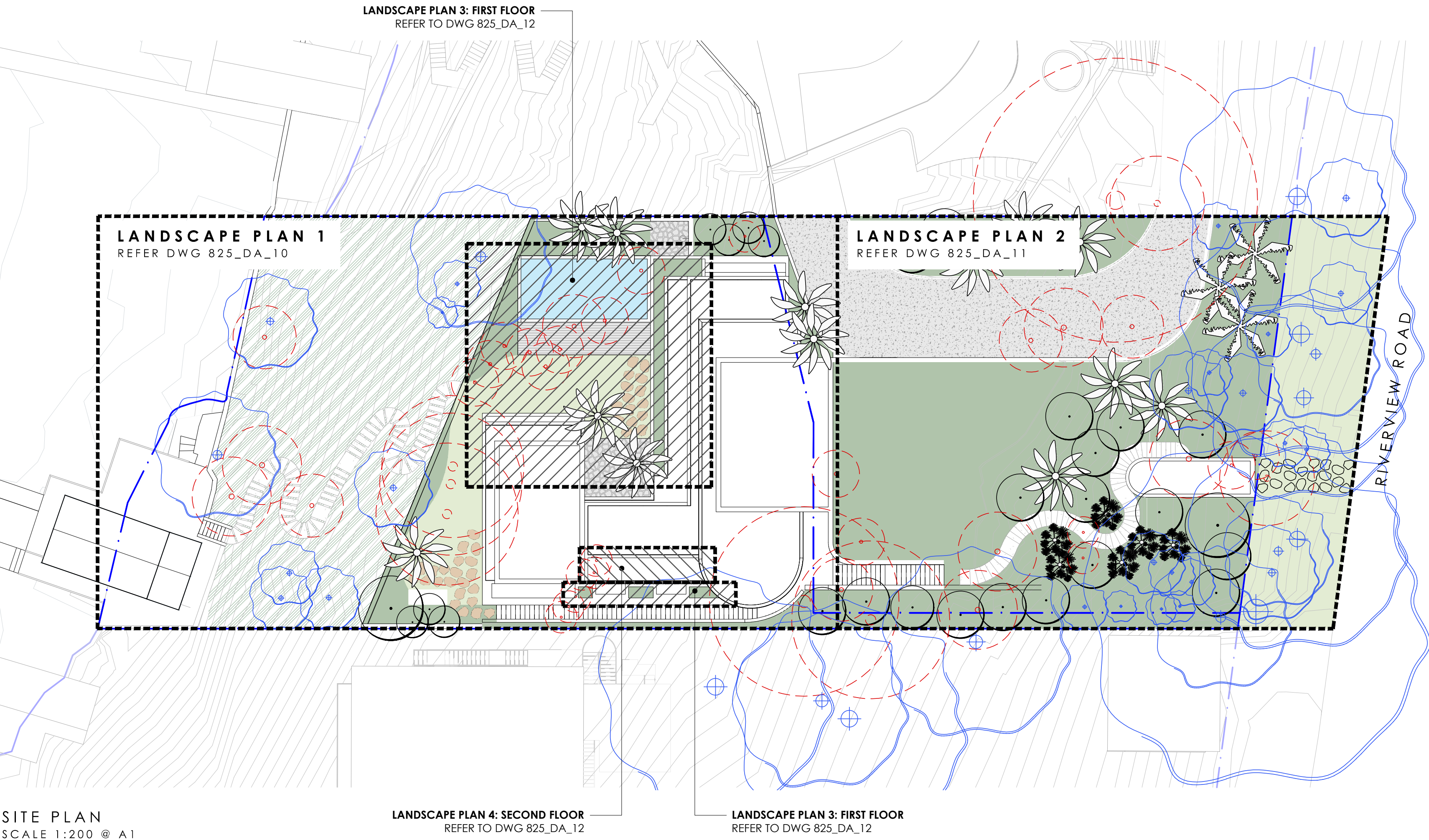


SITE LOCATION
NTS | GOOGLE MAPS



DRAWING SCHEDULE

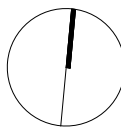
825_DA_01	COVER PAGE
825_DA_02	PLANT SCHEDULE
825_DA_03	EXISTING TREE PLAN
825_DA_10	LANDSCAPE PLAN 1 - REAR GARDEN
825_DA_11	LANDSCAPE PLAN 2 - FRONT GARDEN
825_DA_13	LANDSCAPE PLAN 3 & 4 - ROOF
825_DA_45	TYPICAL DETAILS
825_DA_50	GENERAL SPECIFICATION

GENERAL NOTES

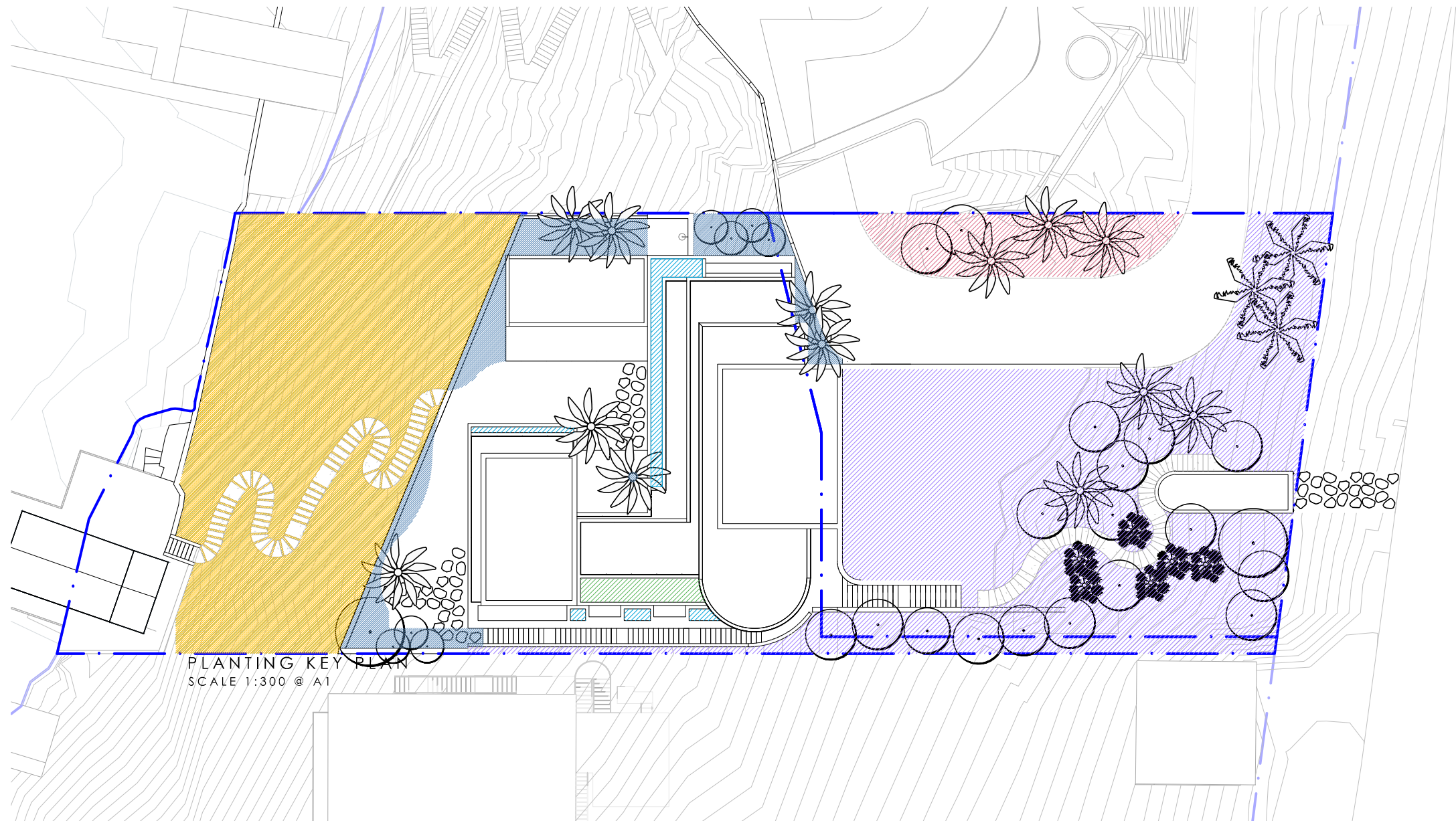
- ALL LANDSCAPE DRAWINGS ARE TO BE READ IN CONJUNCTION WITH THE ARCHITECT'S AND ADDITIONAL CONSULTANT'S DRAWINGS, SPECIFICATIONS AND REPORTS
- ALL PUBLIC UTILITY SERVICES ARE TO BE LOCATED ON SITE BY THE CONTRACTOR PRIOR TO THE COMMENCEMENT OF WORKS. THE LOCATION, PRESENCE AND EXTENT OF SERVICES SHOWN ARE NOT GUARANTEED COMPLETE OR CORRECT
- PERFORM EXCAVATION IN THE VICINITY OF UNDERGROUND UTILITIES WITH CARE AND IF NECESSARY, BY HAND. THE CONTRACTOR BEARS FULL RESPONSIBILITY FOR THIS WORK AND DISRUPTION OR DAMAGE TO UTILITIES SHALL BE REPAIRED IMMEDIATELY AT NO EXPENSE TO THE OWNER
- NO TREES PROTECTED UNDER THE LOCAL COUNCIL'S TREE PRESERVATION ORDER ARE TO BE REMOVED UNLESS APPROVED BY DEVELOPMENT CONSENT OR PERMIT OBTAINED FROM COUNCIL
- ALL PAVING IS INDICATIVE, TO BE TO FUTURE SPECIFICATION, AND SET OUT ON SITE
- ALL WORK TO BE CARRIED OUT IN ACCORDANCE WITH THE LOCAL COUNCIL'S APPROVAL, STANDARDS AND CODES
- THE CONTRACTOR IS TO ENSURE THAT ALL THE WORKS ARE CARRIED OUT IN ACCORDANCE WITH THE WORK HEALTH AND SAFETY ACT
- MBD TO REVIEW PLANT MATERIALS AT SOURCE OR BY PHOTOGRAPHS PRIOR TO PURCHASE AND DELIVERY
- EXACT LOCATIONS OF NEW PLANT MATERIAL TO BE SETOUT AND APPROVED BY THE MBD ONSITE PRIOR TO INSTALLATION. MBD RESERVES THE RIGHT TO ADJUST PLANTS TO EXACT LOCATION ONSITE

DRAINAGE AND IRRIGATION NOTES

- REFER TO CIVIL ENGINEER'S UTILITY AND DRAINAGE PLANS FOR UTILITY LOCATION AND DRAINAGE INFORMATION.
- REQUIREMENTS FOR LANDSCAPE DRAINAGE TO BE CONFIRMED ONSITE UNLESS OTHERWISE SHOWN ON THE LANDSCAPE PLANS
- TREE PITS THAT HAVE BEEN EXCAVATED INTO HEAVY EARTH OR STONE TO CONTAIN A RING OF AG PIPE LAID AT THE INVERT OF THE PIT WITHIN A MINIMUM 200mm LAYER OF FREE DRAINING MATERIAL. AG PIPE TO BE CONNECTED TO A DRAINAGE OUTLET (REFER TO TYPICAL TREE PIT DRAINAGE SECTION)
- ALL POTS TO HAVE AN IRRIGATION ALLOWANCE (SHRUBBLERS OR DRIP)
- FOR POTS LOCATED ON PAVED SURFACES, TYPICAL PAVING IRRIGATION DETAIL TO BE USED AS SHOWN
- POTS ADJACENT TO GARDEN BEDS TO BE IRRIGATED VIA IN GARDEN IRRIGATION SYSTEM
- ALL LAWN AREAS TO HAVE POPUP ROTORS
- ALL GARDEN BEDS TO HAVE FIXED SOLID RISERS WITH SPRAYS



PLANT SCHEDULE



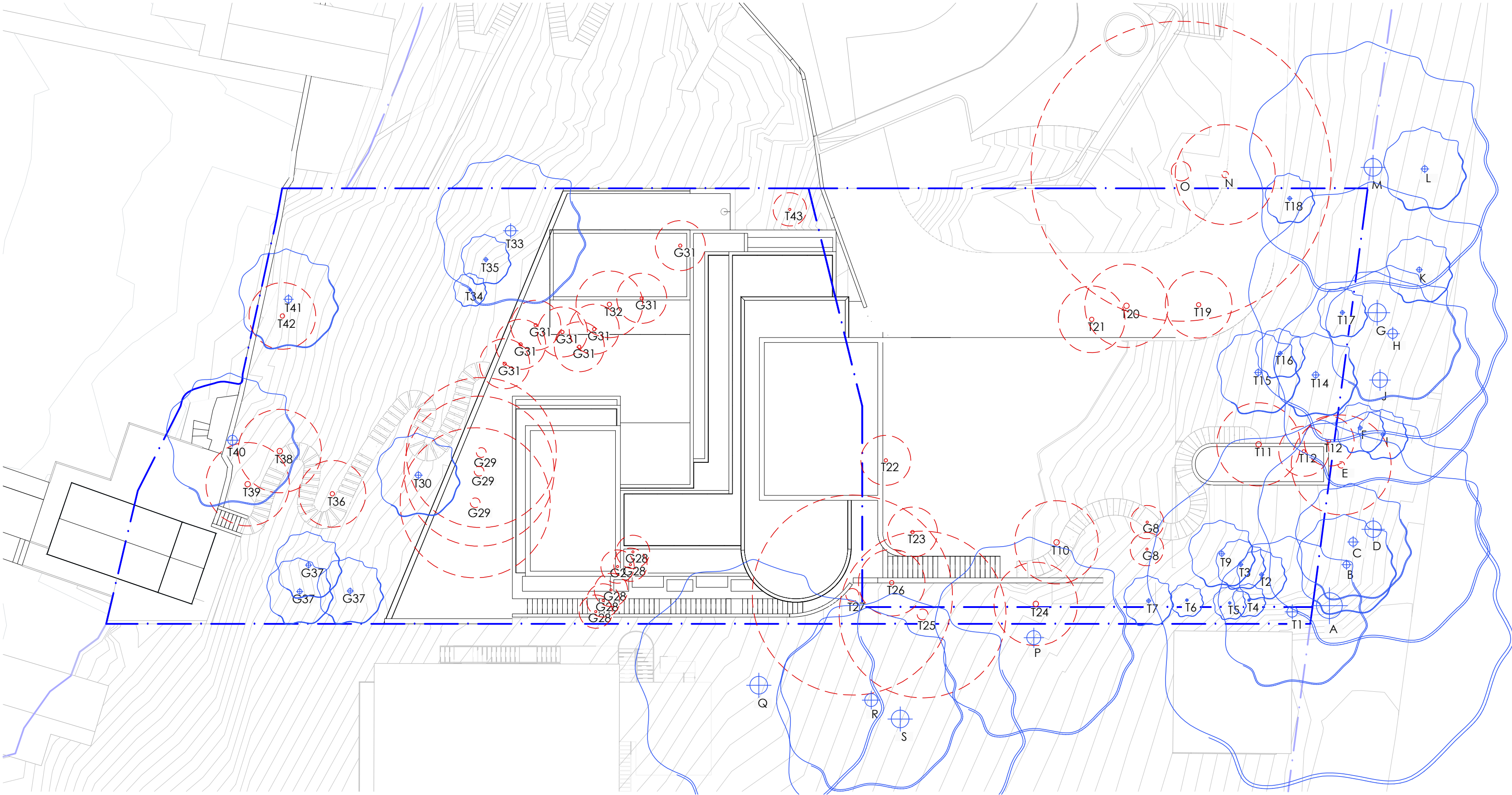
LEGEND

- ZONE 1
- ZONE 2
- ZONE 3
- ZONE 4
- ZONE 5
- ZONE 6

TREES												
CODE	BOTANIC NAME	COMMON NAME	ZONE 1	ZONE 2	ZONE 3	ZONE 4	ZONE 5	ZONE 6	TOTAL	POT SIZE	MATURE HEIGHT	NOTES
*BI	Banksia integrifolia	Coast Banksia				1			1	300L	6m	
*CA	Cyathea australis	Rough Tree Fern				6			6	Mature	6m	
#ER	Elaeocarpus reticulatus	Blueberry Ash		7		8			15	100L	6m	
#GF	Glochidion ferdinandi	Cheese Tree		1		1			2	200L	8m	
#LA	Livistona australis	Cabbage Tree palm		7	3	5			15	Mature	8-12m	
#SS	Syzygium smithii	Common Lilly Pilly			2	7			9	100L	8m	
SHRUBS & PERENNIALS												
CODE	BOTANIC NAME	COMMON NAME	ZONE 1	ZONE 2	ZONE 3	ZONE 4	ZONE 5	ZONE 6	TOTAL	POT SIZE	MATURE HEIGHT	NOTES
Am	Alocasia macrorrhiza	Giant Taro		16	7	12			35	300mm	3.5m	
An	Alpinia nutans	Dwarf cardamon		35					35	300mm	3m	
#Bo	Breynia oblongifolia	Coffee Bush	50			50			100	200mm	3m	
#Mc	Macrozamia communis	Burrawang				15			15	500mm	2m	
Md	Monstera deliciosa	Swiss Cheese Plant			9	18			27	300mm	3m	
Psh	Philodendron selloum x 'Hope'	Philodendron Hope		15	30	30			75	200mm	1.5m	
Pt	Pittosporum tobira 'Miss Muffet'	Pittosporum 'Miss Muffet'		20			20	20	60	300mm	0.6m	
#Ps	Polyscias sambucifolia	Elderberry Panax	50			50			100	200mm	2-6m	
Vs	Viburnum suspensum	Sandankwa viburnum		25	20	40			85	300mm	3m	
*Wf	Westringia fruticosa	Coast Rosemary		20	20				40	200mm	2m	
#Xm	Xanthorrhoea macronema	Bottlebrush Grass Tree				10			10	300mm	1.5m	
GRASSES												
CODE	BOTANIC NAME	COMMON NAME	ZONE 1	ZONE 2	ZONE 3	ZONE 4	ZONE 5	ZONE 6	TOTAL	POT SIZE	MATURE HEIGHT	NOTES
#Dc	Dianella caerulea	Blue Flax Lily	50			50			100	140mm	1m	
*Fn	Ficinia nodosa	Knobby Club Rush	50			50			100	140mm	1m	
#Lc	Lomandra confertifolia	Mat Rush	200			200			400	140mm	0.5m	
#Li	Lomandra longifolia	Spiny-headed Mat Rush	200			200			400	200mm	0.8m	
#Ms	Microlaena stipoides	Weeping Grass				500			500	50mm	0.3m	
#Pa	Poa affinis	Tussock Grass	150			150			300	140mm	0.6m	
FERNS												
CODE	BOTANIC NAME	COMMON NAME	ZONE 1	ZONE 2	ZONE 3	ZONE 4	ZONE 5	ZONE 6	TOTAL	POT SIZE	MATURE HEIGHT	NOTES
#Bn	Blechnum spp.	Blechnum	50			50			100	200mm	1m	
#Cd	Calochlaena dubia	Soft Bracken	50			50			100	140mm	2m	
#Pe	Pteridium esculentum	Bracken Fern	50			50			100	140mm	1m	
SUCCULENTS												
CODE	BOTANIC NAME	COMMON NAME	ZONE 1	ZONE 2	ZONE 3	ZONE 4	ZONE 5	ZONE 6	TOTAL	POT SIZE	MATURE HEIGHT	NOTES
By	Beschoeria yuccoides	Mexican Lily		15	10			10	35	300mm	1m	
Nn	Nolina nelsonii	Blue nolina			10		10		20	100L	2.5m	
GROUNDCOVERS / CLIMBERS												
CODE	BOTANIC NAME	COMMON NAME	ZONE 1	ZONE 2	ZONE 3	ZONE 4	ZONE 5	ZONE 6	TOTAL	POT SIZE	MATURE HEIGHT	NOTES
#Bs	Billardiera scandens	Apple Berry	200			200			400	100mm	Groundcover	
Bg	Bougainvillea glabra 'Tango'	Bougainvillea Tango		5			10		15	100mm	Climber	
**Cia	Cissus antarctica	Kangaroo vine	50	50					100	200mm	Climber	
#Ppa	Pandorea pandorana	Wonga Wonga Vine	200		50	50			300	100mm	Climber	
Ps	Parthenocissus sikkimensis	Sikkim Creeper			30	25			55	100mm	Groundcover	
#Pp	Pratia purpurascens	White Root	200		100	200	100	50	650	100mm	Groundcover	
Rp	Rosmarinus prostratus	Prostrate Rosemary		25			20		45	100mm	Groundcover	
Sc	Santolina chamaecyparissus	Lavender cotton					20		20	100mm	Groundcover	

NOTES

- # SPECIES SELECTED FROM NSW SCIENTIFIC COMMITTEE - FINAL DETERMINATION FOR PITTWATER AND WAGSTAFFE SPOTTED GUM FOREST IN THE SYDNEY BASIN BIOREGION (2013)
 - * SPECIES SELECTED FROM PITTWATER WARD NATIVE PLANTING GUIDE
 - ** NATIVE SPECIES
- TOTAL NUMBER OF SPECIES FOR PITTWATER SPOTTED GUM FOREST ENDANGERED ECOLOGICAL COMMUNITY (#): 3616
- TOTAL NUMBER OF NEW PLANTING SPECIES: 4370
- PERCENTAGE OF SPECIES FOR PITTWATER SPOTTED GUM FOREST ENDANGERED ECOLOGICAL COMMUNITY (#): **83%**
- IF SPECIFIED POT SIZES ARE NOT READILY AVAILABLE, PLEASE CONTACT MBD TO CLARIFY SUBSTITUTE SIZES AND CHANGES TO QUANTITIES
 - ALL MATURE TREES TO BE SOURCED AND SUPPLIED BY MYLES BALDWIN DESIGN
 - THE PLANT SCHEDULE IS CALCULATED BASED OFF THE LANDSCAPE PLANS PROVIDED BY MBD. ADDITIONAL PLANTS OUTSIDE OF THIS SCHEDULE MAY BE REQUIRED TO REACH THE DESIRED PLANT DENSITIES ONSITE
 - ALL PLANT MATERIAL TO BE SETOUT ONSITE BY MYLES BALDWIN DESIGN PRIOR TO INSTALLATION



EXISTING TREE SCHEDULE			
TREE NO	BOTANIC NAME	COMMON NAME	PROPOSED ACTION
T1	Corymbia maculata	Spotted Gum	RETAIN
T2	Araucaria cunninghamii	Hoop Pine	RETAIN
T3	Araucaria cunninghamii	Hoop Pine	RETAIN
T4	Araucaria cunninghamii	Hoop Pine	RETAIN
T5	Araucaria cunninghamii	Hoop Pine	RETAIN
T6	Araucaria cunninghamii	Hoop Pine	RETAIN
T7	Araucaria cunninghamii	Hoop Pine	RETAIN
G8	Livistonia australis	Cabbage Tree Palm	REMOVE
T9	Corymbia maculata	Spotted Gum	RETAIN
T10	Corymbia maculata	Spotted Gum	REMOVE
T11	Allocasuarina torulosa	Forest Oak	REMOVE
T12	Pittosporum undulatum	Native Daphne	REMOVE
T13	Pittosporum undulatum	Native Daphne	REMOVE
T14	Allocasuarina torulosa	Hoop Pine	RETAIN
T15	Corymbia maculata	Spotted Gum	RETAIN
T16	Brachychiton acerifolius	Illawarra Flame Tree	RETAIN
T17	Allocasuarina torulosa	Forest Oak	RETAIN
T18	Allocasuarina torulosa	Forest Oak	RETAIN
T19	Allocasuarina torulosa	Forest Oak	REMOVE
T20	Corymbia maculata	Spotted Gum	REMOVE
T21	Eucalyptus crebra	Narrow Leaved Iron Bark	REMOVE
T22	Jacaranda mimosifolia	Jacaranda	REMOVE

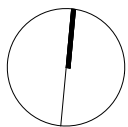
EXISTING TREE SCHEDULE			
TREE NO	BOTANIC NAME	COMMON NAME	PROPOSED ACTION
T23	Sterlitia nicolai	Giant Bird of Paradise	REMOVE
T24	Corymbia maculata	Spotted Gum	REMOVE
T25	Jacaranda mimosifolia	Jacaranda	REMOVE
T26	Corymbia maculata	Spotted Gum	REMOVE
T27	Corymbia maculata	Spotted Gum	REMOVE
G28	Archontophoenix cunninghamiana	Bangalow Palm	REMOVE
G29	Jacaranda mimosifolia	Jacaranda	REMOVE
T30	Eucalyptus botryoides	Bangalay	RETAIN
G31	Syzigium australe	Brush Cherry Lilly Pilly	REMOVE
T32	Jacaranda mimosifolia	Jacaranda	REMOVE
T33	Corymbia maculata	Spotted Gum	RETAIN
T34	Corymbia maculata	Spotted Gum	RETAIN
T35	Corymbia maculata	Spotted Gum	RETAIN
T36	Glochidion ferdinandi	Cheese Tree	REMOVE
G37	Olea europaea subsp. Cuspidata	African Olive	RETAIN
T38	Pinus radiata	Monterey Pine	REMOVE
T39	Eucalyptus robusta	Swamp Mahogany	REMOVE
T40	Angopgora costata	Sydeny Red Gum	RETAIN
T41	Eucalyptus botryoides	Bangalay	RETAIN
T42	Schefflera actinophylla	Queensland Umbrella Tree	REMOVE
T43	Ficus benjamina	Weeping Fig	REMOVE

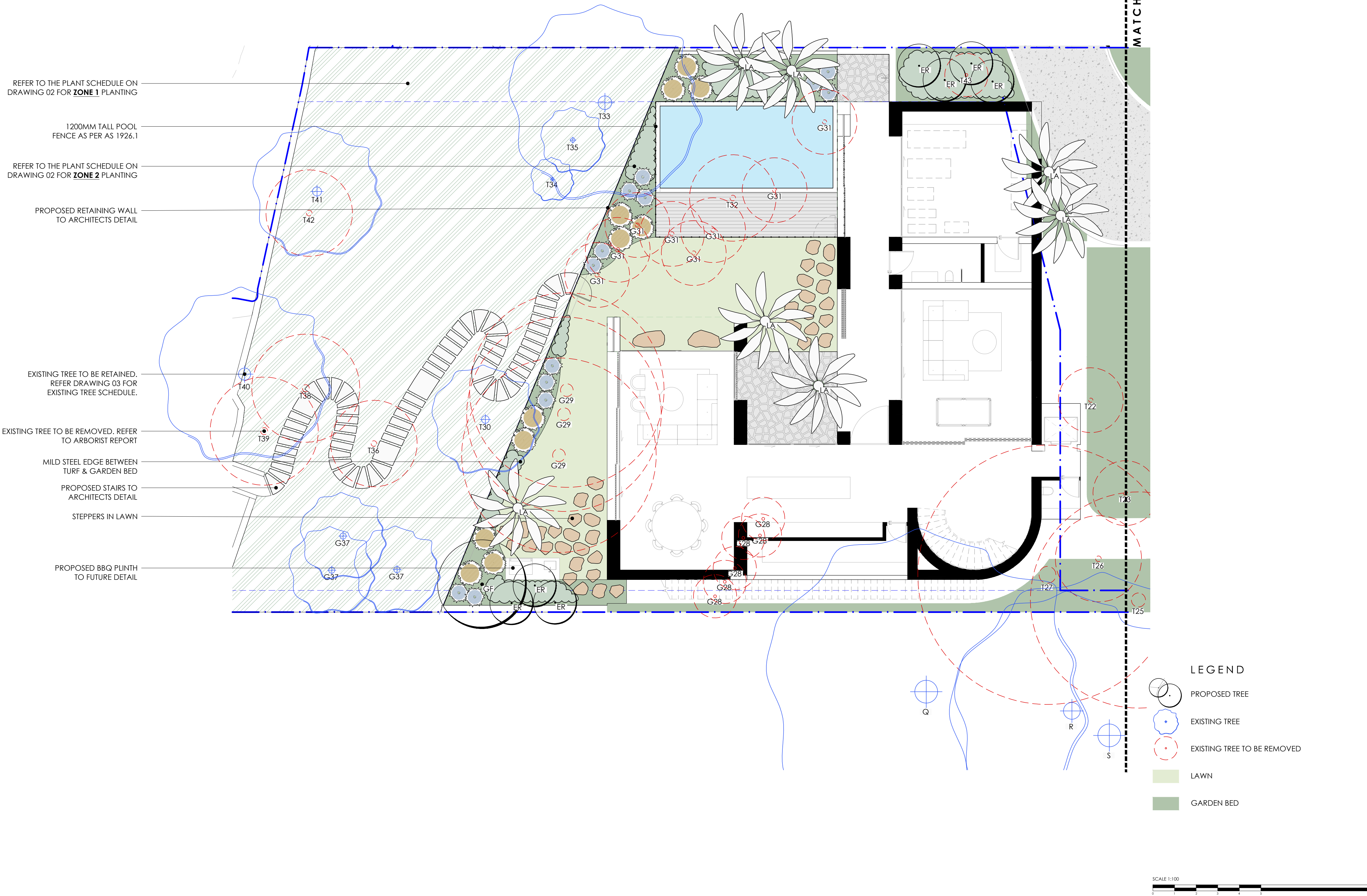
EXISTING NEIGHBOURING TREE SCHEDULE			
TREE NO	BOTANIC NAME	COMMON NAME	PROPOSED ACTION
A	Corymbia maculata	Spotted Gum	RETAIN
B	Brachychiton acerifolius	Illawarra Flame Tree	RETAIN
C	Brachychiton acerifolius	Illawarra Flame Tree	RETAIN
D	Allocasuarina torulosa	Forest Oak	RETAIN
E	Allocasuarina torulosa	Forest Oak	REMOVE
F	Brachychiton acerifolius	Illawarra Flame Tree	RETAIN
G	Allocasuarina torulosa	Forest Oak	RETAIN
H	Allocasuarina torulosa	Forest Oak	RETAIN
I	Allocasuarina torulosa	Forest Oak	RETAIN
J	Jacaranda mimosifolia	Jacaranda	RETAIN
K	Grevillea 'Moonlight'	Grevillea cultivar	RETAIN
L	Pittosporum undulatum	Native Daphne	RETAIN
M	Coloneaster glaucophyllus	Cantoneaster	RETAIN
N	Ligustrum lucidum	Large Leaved Privet	REMOVE
O	Jacaranda mimosifolia	Jacaranda	REMOVE
P	Corymbia maculata	Spotted Gum	RETAIN
Q	Corymbia maculata	Spotted Gum	RETAIN
R	Corymbia maculata	Spotted Gum	RETAIN
S	Pinus elliotii	Slash Pine	RETAIN

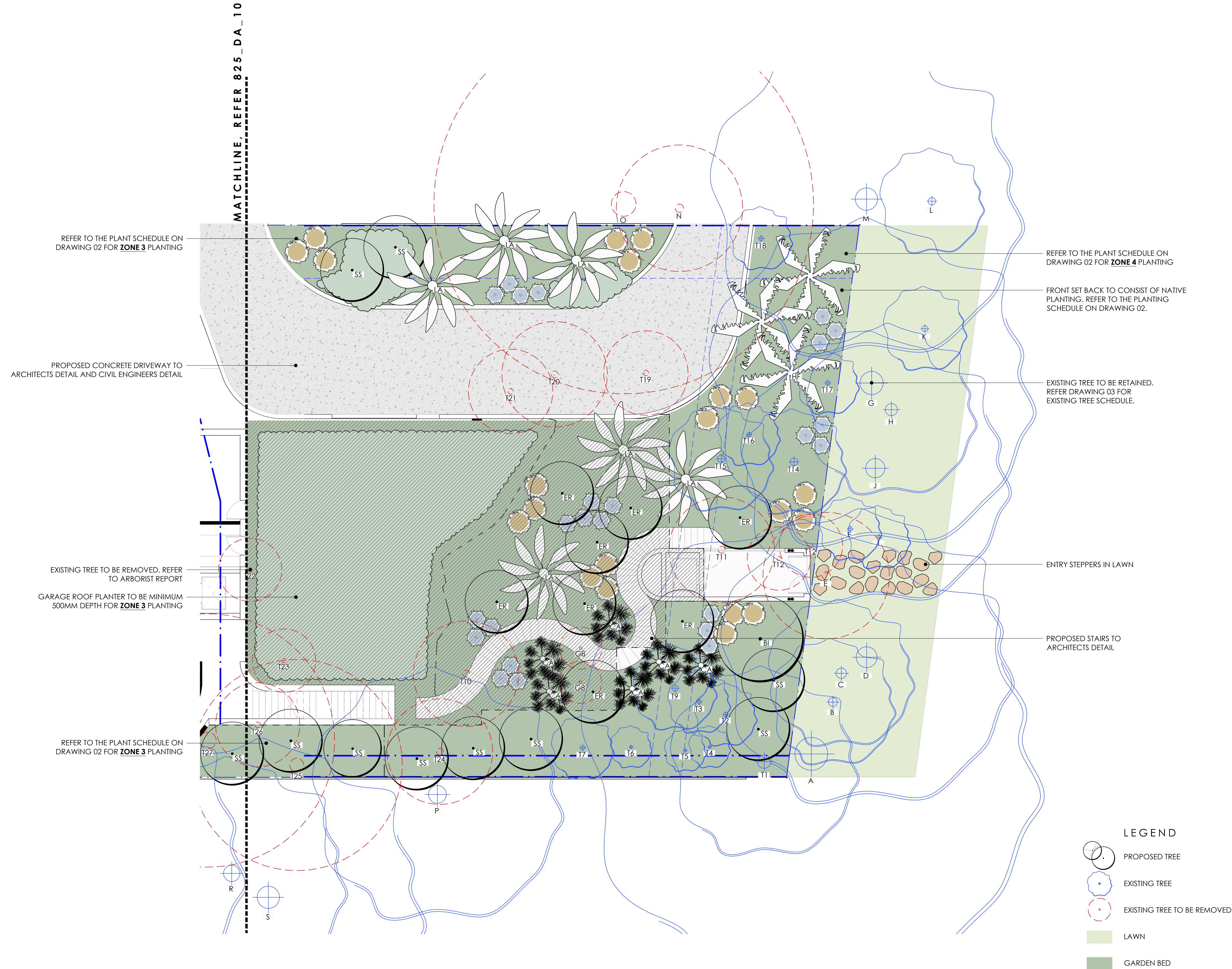
- TREES TO BE RETAINED
- TREES TO BE REMOVED

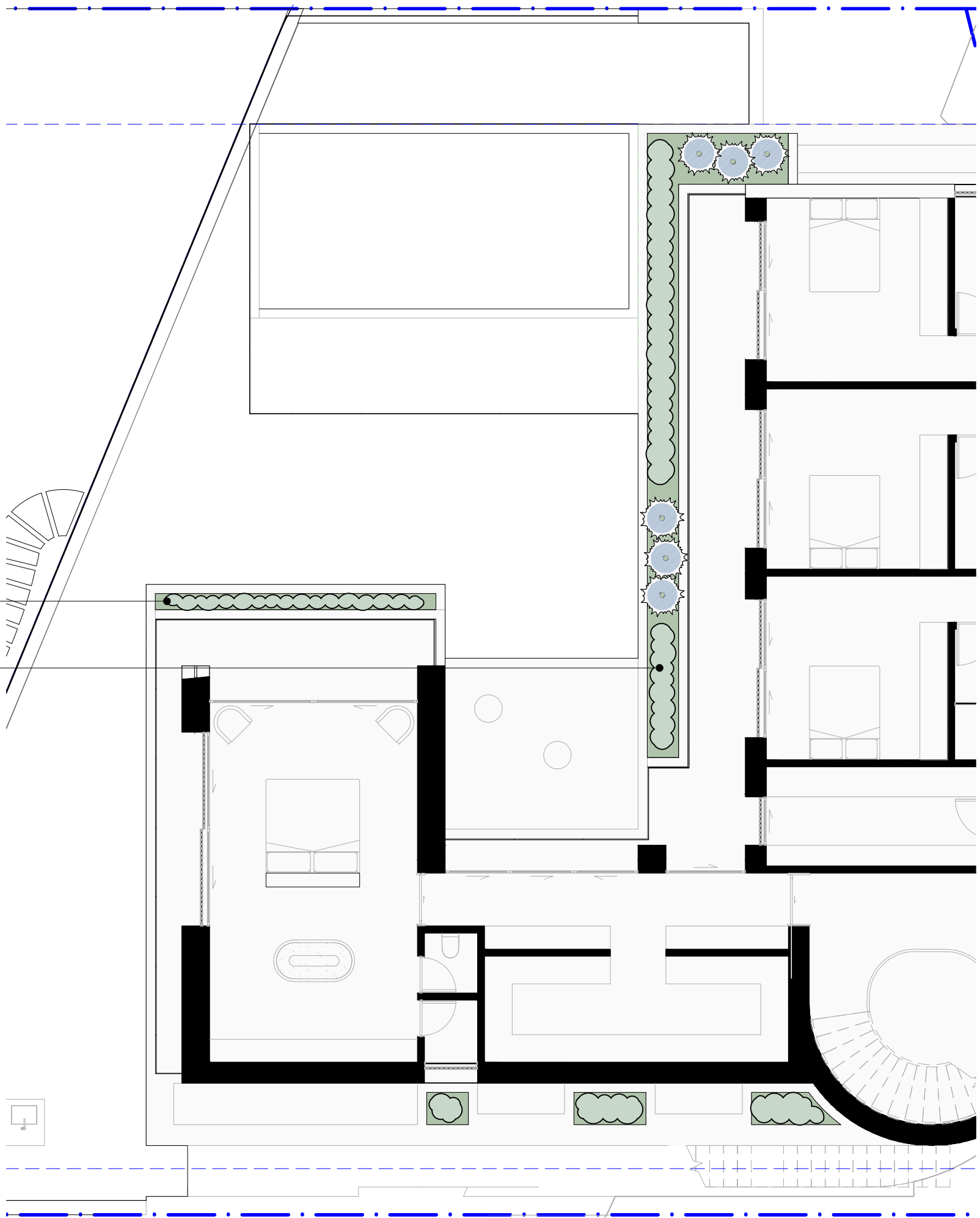
NOTES

REFER TO ARBORIST REPORT, PREPARED BY MARTIN PEACOCK TREE CARE, DATE 11.11.24

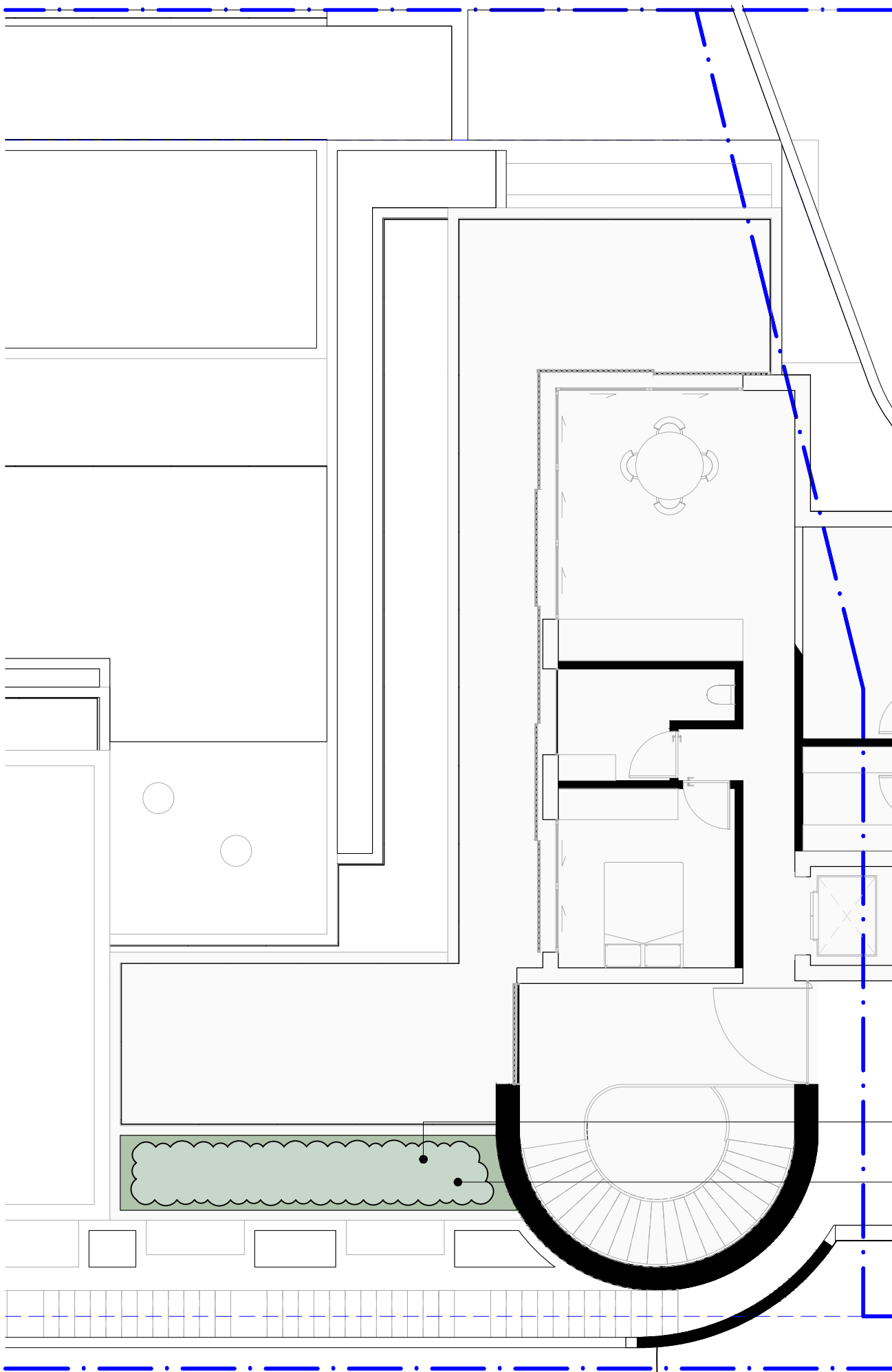






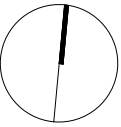
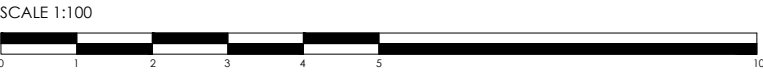


LANDSCAPE PLAN 3 - FIRST FLOOR
SCALE 1:100 @ A1



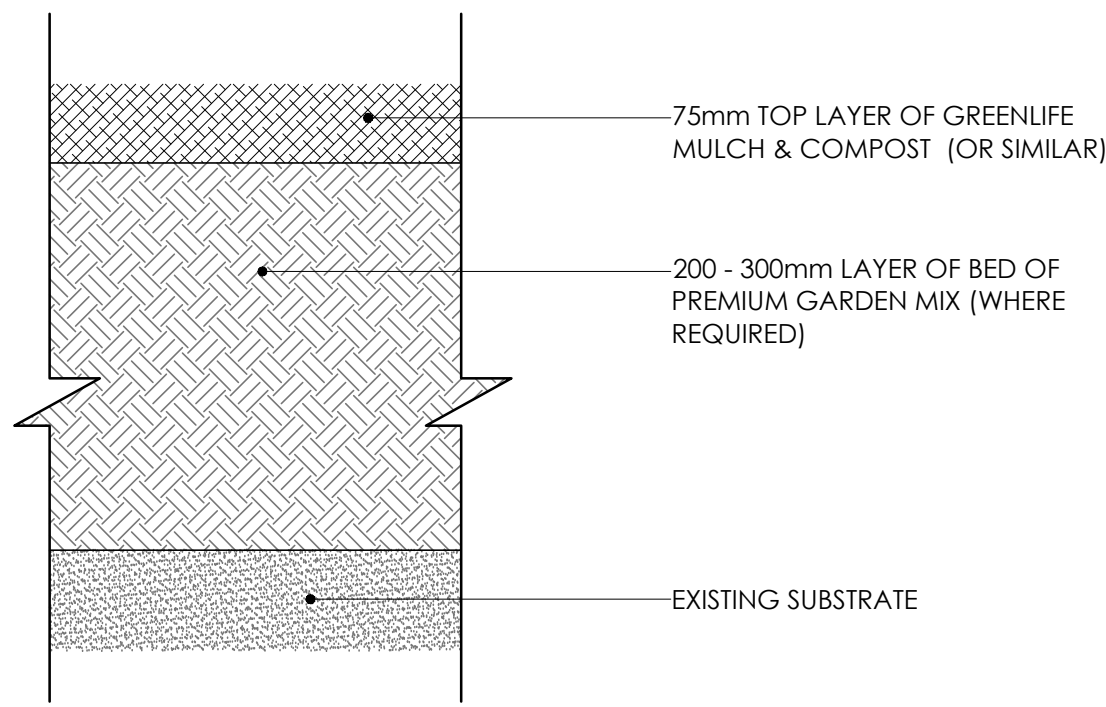
LANDSCAPE PLAN 4 - SECOND FLOOR
SCALE 1:100 @ A1

- LEGEND
- PROPOSED TREE
 - EXISTING TREE
 - EXISTING TREE TO BE REMOVED
 - LAWN
 - GARDEN BED

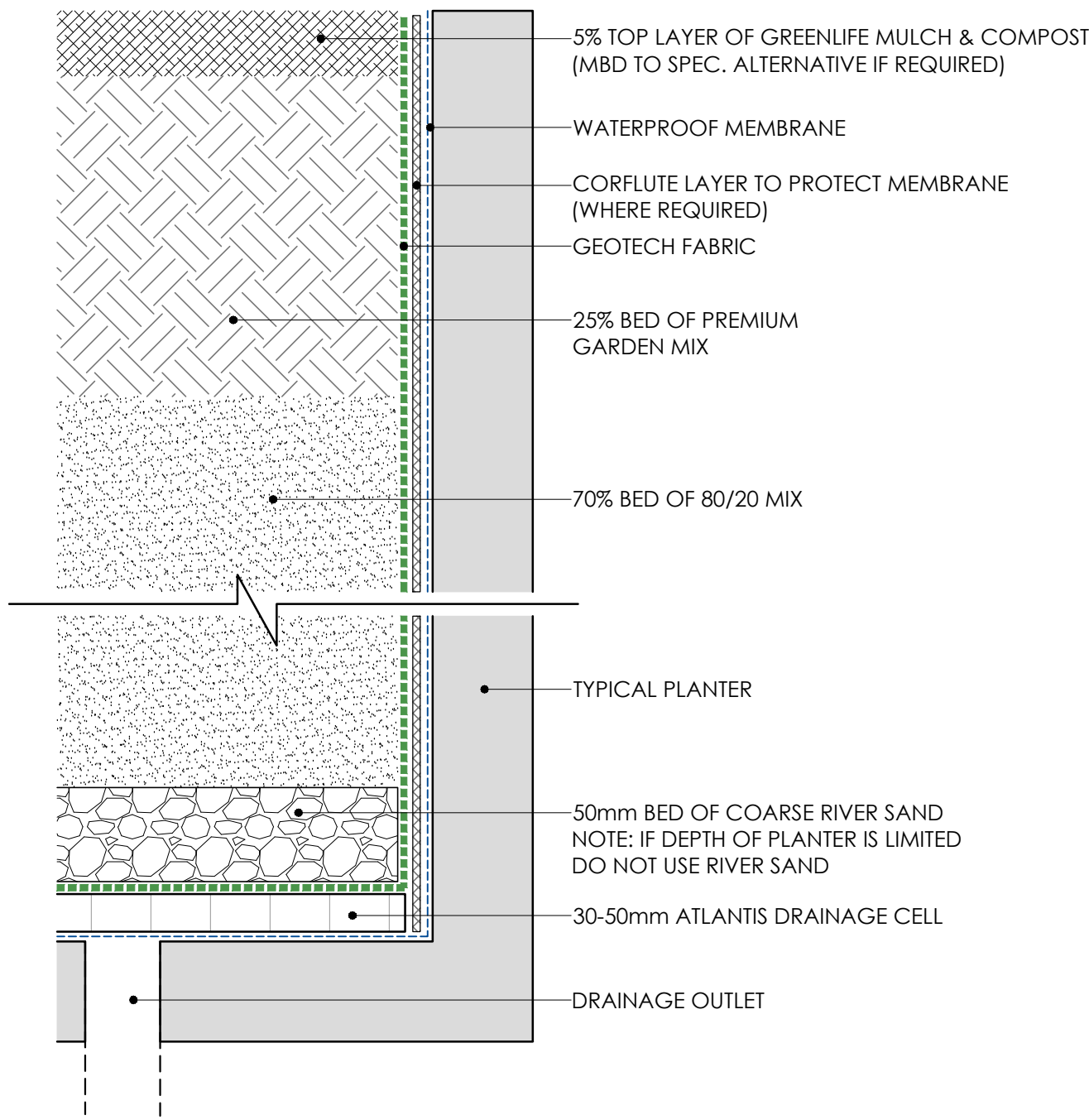


DWG No: 825_DA_12
SCALE: AS NOTED
DRAWN: TC
CHECKED: LS
ISSUE: 8
THIS DRAWING IS COPYRIGHT

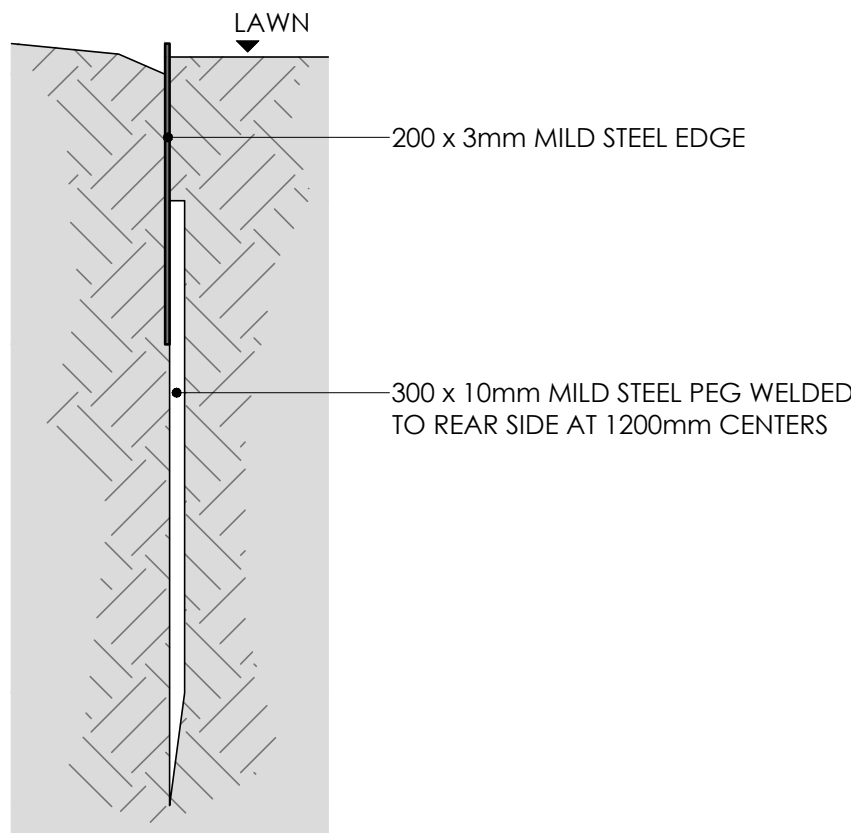
AMENDMENT		
ISSUE	DATE	DETAILS
A	16.12.24	ISSUE FOR DA
B	30.03.25	ISSUE FOR DA



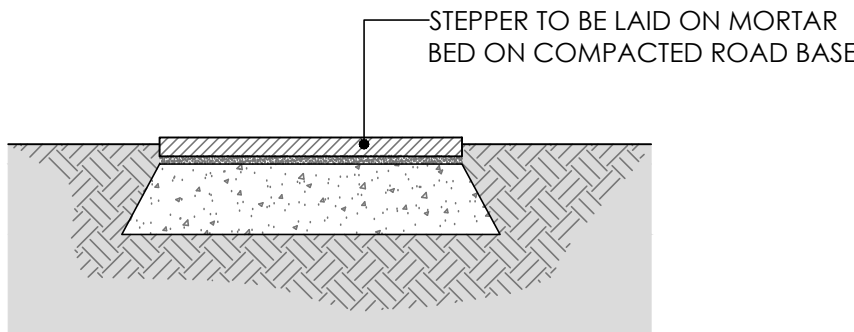
TYPICAL GARDEN SOIL PROFILE
SCALE: 1:5 @ A1



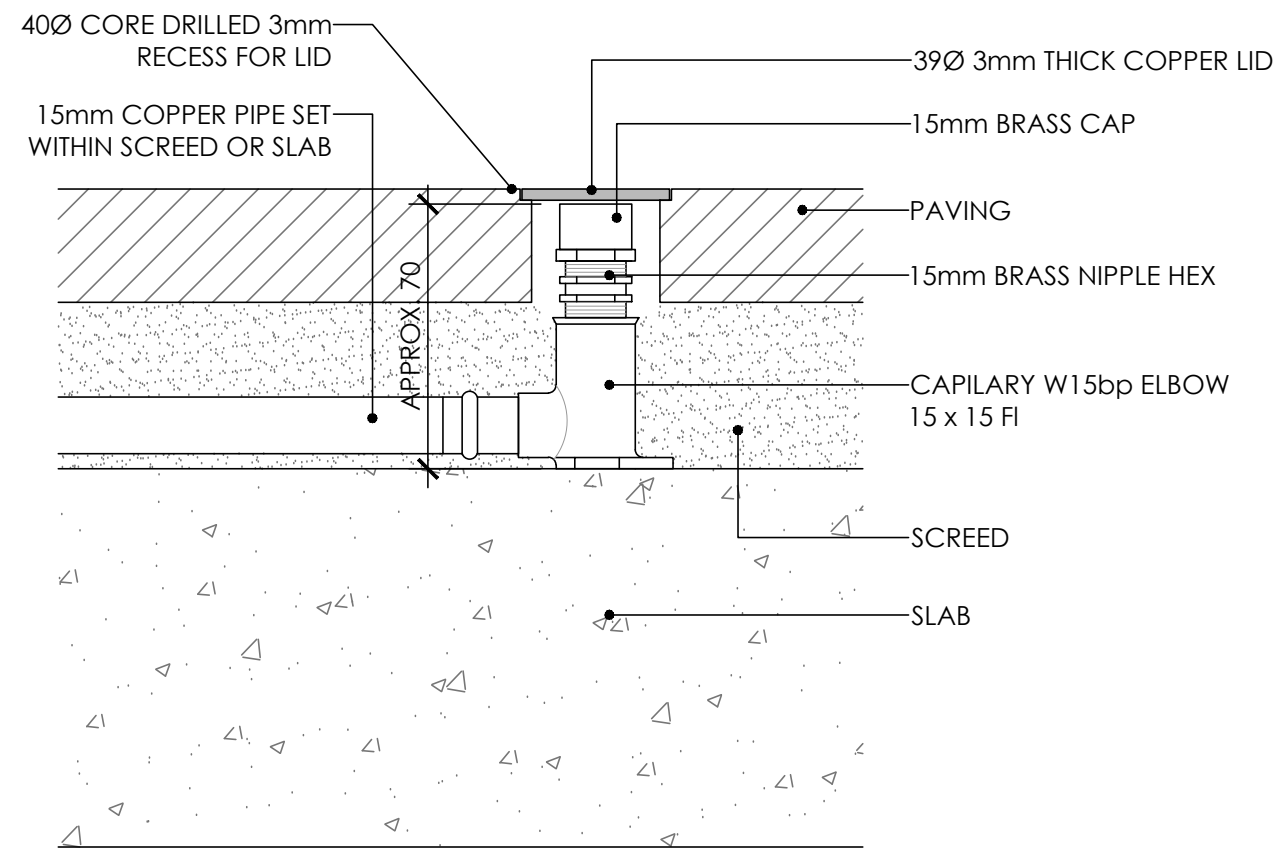
TYPICAL PLANTER SOIL PROFILE
SCALE: 1:5 @ A1



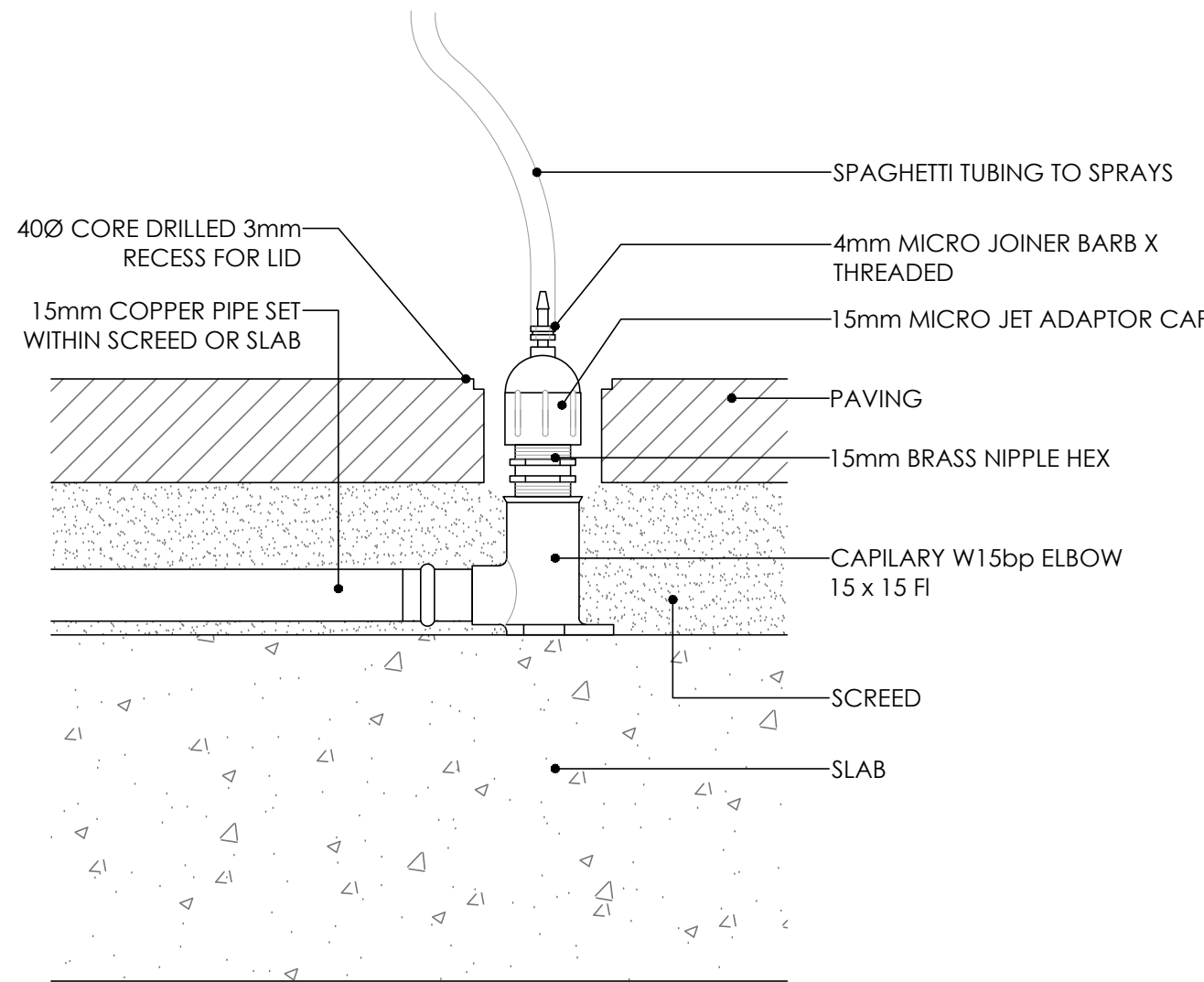
TYPICAL STEEL EDGE
SCALE 1:5 @ A1



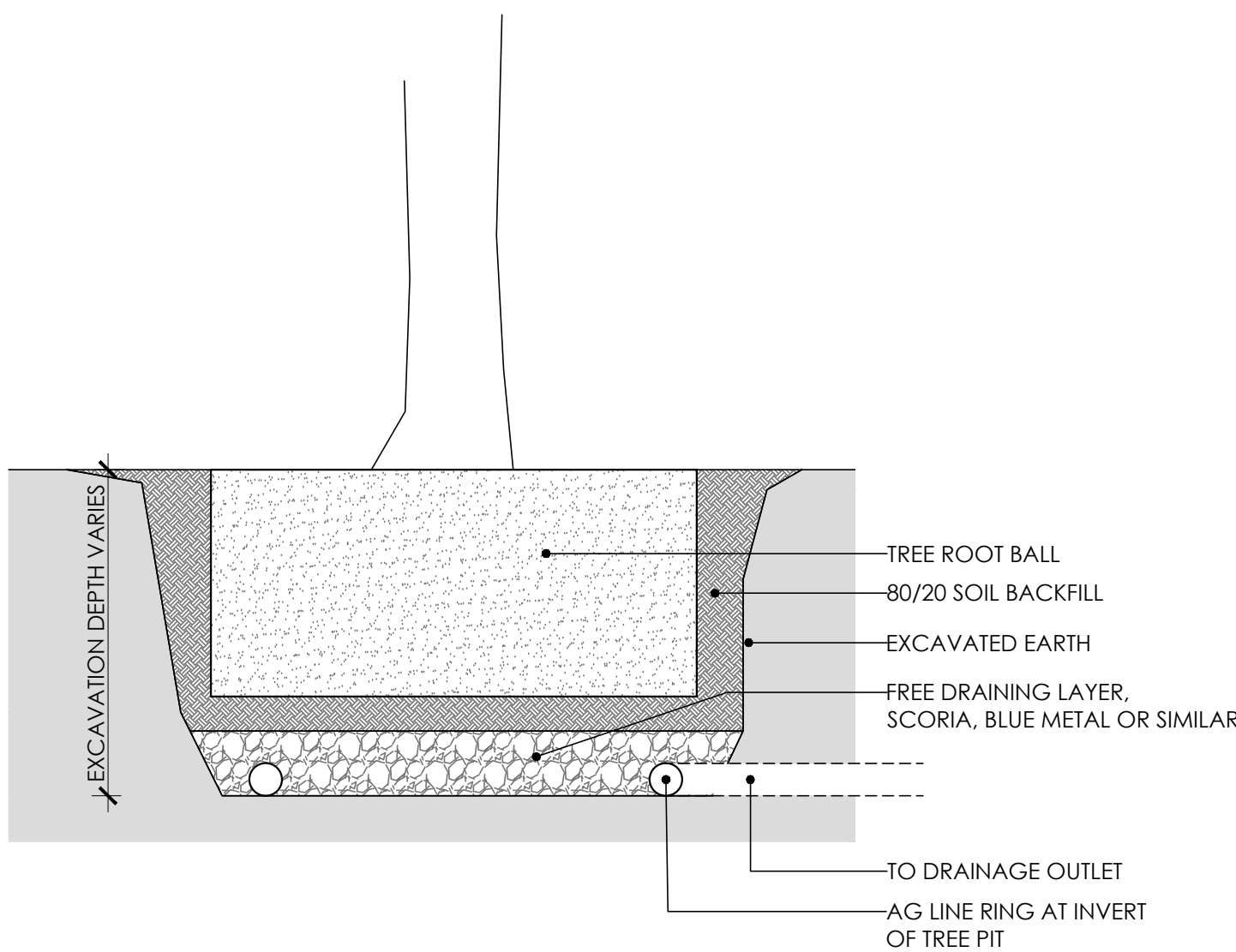
TYPICAL GARDEN STEPPER
SCALE: 1:10 @ A1



TYPICAL PAVING IRRIGATION CLOSED
SCALE 1:2 @ A1



TYPICAL PAVING IRRIGATION OPEN
SCALE 1:2 @ A1



TYPICAL TREE PIT DRAINAGE
SCALE 1:20 @ A1

GENERAL SPECIFICATION NOTES

1.0 STANDARDS

- 1.1 SOILS
- AS 4419: Soils for Landscaping and Garden Use
 - AS 3743: Potting Mixes
 - AS 4454: Composts, Soil Conditioners and Mulches
- 1.2 Plants
- AS 2303: Tree Stock for Landscape Use
 - AS 4970: Protection of Trees on Development Sites

2.0 PRODUCTS

2.1 MATERIAL

Topsoil

- Source: Provide topsoil, which contains organic matter, is free from stones, contaminants and weeds
- Site: If available, provide material recovered from the site

Turf

- Supplier: Obtain turf from a specialist grower of cultivated turf
- Quality: Provide turf of even thickness, free from weeds and other foreign matter

Fertiliser

- General: Provide proprietary fertilisers, delivered to the site in sealed bags marked to show manufacturer or vendor, weight, fertiliser type, N:P:K ratio, recommended uses and application rates

Plants

- Health: Supply plants with foliage size, texture and colour at time of delivery consistent with the size, texture and colour shown in healthy specimens of the nominated species
- Vigour: Supply plants with extension growth consistent with that exhibited in vigorous specimens of the species nominated
- Damage: Supply plants free from damage and from restricted habit due to growth in nursery rows
- Pests and disease: Supply plants with foliage free from pest attack or disease
- Substitutes: Plant substitution (species or quantities) is not acceptable unless approved by Myles Baldwin Design.

3.0 EXECUTION

3.1 SITE PREPARATION

Weed eradication

- Herbicide: Eradicate weeds with a non-residual glyphosate herbicide in any of its registered formulae, at the recommended maximum rate
- Earth mounds
- Placing: Place clean filling in layers approximately 150 mm thick compacted to 85% of the dry density ratio of the surrounding soil as determined by AS 1289.5.4.1. Minimise slumping and further internal packing down

Edges

- Construct changes in grade over a minimum width of 500 mm to smooth, gradual and rounded profiles with no distinct joint

Existing trees

- Tree protection zones (TPZ) shall be established around all trees to be retained and in accordance of AS 4970. The area within the fence shall be mulched and maintained at 75mm depth
- No excavation, construction activity, grade changes, storage of materials, stock piling, siting of sheds, preparation of mixes or cleaning of tools is permitted within the TPZ

Planting beds

- Excavated: Excavate to bring the subsoil to at least 300 mm below finished design levels. Shape the subsoil to fall to subsoil drains where applicable. Break up the subs to a further depth of 100 mm
- Unexcavated: Remove weeds, roots, building rubble and other debris. Bring the planting bed to 75 mm below finished design levels
- Services and roots: Do not disturb services or tree roots; if necessary, cultivate these areas by hand

Placing topsoil

- General: Spread the topsoil on the prepared subsoil and grade evenly, making the necessary allowances to permit the following:
- Required finished levels and contours may be achieved after light compaction
- Grassed areas may be finished flush with adjacent hard surfaces such as kerbs, paths and mowing strips

Topsoil depths

- General: Spread topsoil to the following typical depths:
- Excavated planting areas: If using organic soil, 300 mm. Refer to typical soil profile detail
- Irrigated grassed areas generally: 150 mm
- Irrigated grassed areas, heavy use (e.g. playing fields, playgrounds, and public parks): 200 mm

Sediment and Erosion Control

- Sediment and erosion control measures are required during the construction of all developments and building works. It shall be the contractor's responsibility that works are carried out in accordance with a sediment and erosion control plan and council/approving authority's requirements.

3.2 TURFING

General

- Supply: Deliver the turf within 24 hours of cutting, and lay it within 36 hours of cutting. Prevent the turf from drying out between cutting and laying. If it is not laid within 36 hours of cutting, roll it out on a flat surface with the grass up, and water as necessary to maintain a good condition
- Laying: Lay the turf in the following manner:
 - In stretcher pattern with the joints staggered and close butted
 - Parallel with the long sides of level areas, and with contours on slopes
 - To finish flush, after tamping, with adjacent finished surfaces of ground, paving edging, or grass seeded areas
- Tamping: Lightly tamp to an even surface immediately after laying. Do not use a roller
- Fertilising: Mix the fertiliser thoroughly into the topsoil before placing the turf. Apply lawn fertiliser at the completion of the first and last mowings, and at other times as required to maintain healthy grass cover
- Watering: Water immediately after laying until the topsoil is moistened to its full depth. Continue watering to maintain moisture to this depth
- Levels: Where levels have deviated from the design levels after placing and watering, lift turf and re-grade topsoil to achieve design levels

3.3 PLANTING

General

- Individual plantings in grassed areas: Excavate a hole twice the diameter of the root ball and at least 100 mm deeper than the root ball. Break up the base of the hole to a further depth of 100 mm, and loosen compacted sides of the hole to prevent confinement of root growth
- Watering: Thoroughly water the plants before planting, immediately after planting, and as required to maintain growth rates free of stress
- Placing: Remove the plant from the container with minimum disturbance to the root ball, ensure that the root ball is moist and place it in its final position, in the center of the hole and plumb, and with the top soil level of the plant root ball level with the finished surface of the surrounding soil
- Fertilising plants: In planting beds and individual plantings, place fertiliser pellets around the plants at the time of planting
- Backfilling: Backfill with topsoil mixture. Lightly tamp and water to eliminate air pockets

3.4 TREES

General

- All trees must be planted by an AQF Level 3 Qualified Arborist, Landscape Gardener or Horticulturalist

Clay Soils

- The base of each tree pit within clay soils shall be laid with 100mm deep scoria. A 90mm ag line ring shall sit within the scoria and drain directly to a suitable location. Lay geo-textile fabric evenly above the scoria, prior to tree placement and backfilling with 80/20 mineral soil

3.5 MULCHING

Placing mulch

- General: Place mulch to the required depth, clear of plant stems, and rake to an even surface flush with the surrounding finished levels. Spread and roll mulch so that after settling, or after rolling, it is smooth and evenly graded between design surface levels sloped towards the base of plant stems in plantation beds, and not closer to the stem than 50 mm in the case of gravel mulches.
- Garden beds: Greenlife Mulch and Compost
- Tree mulch ring: Mushroom compost
- Depths: Spread organic mulch to a depth of 75 mm, and gravel mulch to a depth of 50 mm

3.6 STAKES AND TIES

Stakes

- Material: Hardwood, straight, free from knots or twists, pointed at one end
- Installation: Drive stakes into the ground at least one third of their length, avoiding damage to the root system

Ties

- General: Provide 50 mm hessian webbing ties fixed securely to the stakes, one tie at half the height of the main stem, others as necessary to stabilise the plant

3.7 WATERING

Establishment

- Extent: Available soil moisture content of grass areas and garden beds to be monitored on a weekly basis using an approved moisture probe and water applied on a demand basis. Readings should be taken at a depth of 250mm
- All grass areas and garden beds should be maintained within a range of 50-80% available soil moisture. Under no circumstance should areas under irrigation fall below a level of 30% available soil moisture
- No visible signs of wilting of leaves or stems, with all plants fully turgid at all times.
- No sign of over-watering such as constantly wet soil, brown leaf margins, stem rot or brown spots on foliage

3.8 LANDSCAPE SUBSOIL DRAINAGE

General

- Include subsoil drainage behind retaining walls, along path edges and in mass planting beds, including lawn areas. Maintenance access points shall be every 15m

Materials

- Geotextile fabric: shall consist of a woven or a non-woven type to be manufactured from synthetic materials other than polyamide
- Aggregate: shall be a single size with a nominal dimension of 10-40mm
- Subsoil pipe: shall be 90 mm diameter corrugated flexible slotted PVC pipe in a geofabric sock, or 100mm µPVC if under pavement. All pipes to requirements of AS 1254. Where vehicle loads are encountered, reinforced concrete pipe shall be used only

Construction

- Trenches to be minimum 300mm wide and extend 500mm below the subgrade level or 150mm if into bed rock
- Trenches to be lined with geotextile fabric and backfilled with aggregate. Pipe to be laid 50mm above trench floor
- Prior to backfilling the trench, drainage and connection to stormwater is to be approved by the site manager

3.9 COMPLETION

Cleaning

- Stakes and ties: Remove those no longer required at the end of the planting establishment period
- Temporary fences: Remove temporary protective fences at the end of the planting establishment period

4.0 ESTABLISHMENT & DEFECTS LIABILITY

4.1 ESTABLISHMENT

General

- All landscaping works will have an establishment period of 26 weeks in which the subcontractor will be responsible for the maintenance and upkeep of the contracted scope, unless otherwise noted in the project documentation. If applicable refer to the project manager / builder for confirmation

4.2 DEFECTS LIABILITY PERIOD

General

- All landscaping works will be subject to a defects liability period of 52 weeks, commencing from the date of Practical Completion, unless otherwise noted in the project documentation. If applicable refer to the project manager / builder for confirmation

4.3 FAILED PLANTINGS

General

- Photographic images of plants shall be approved by Myles Baldwin Design prior to procurement of replacement plant and tree stock