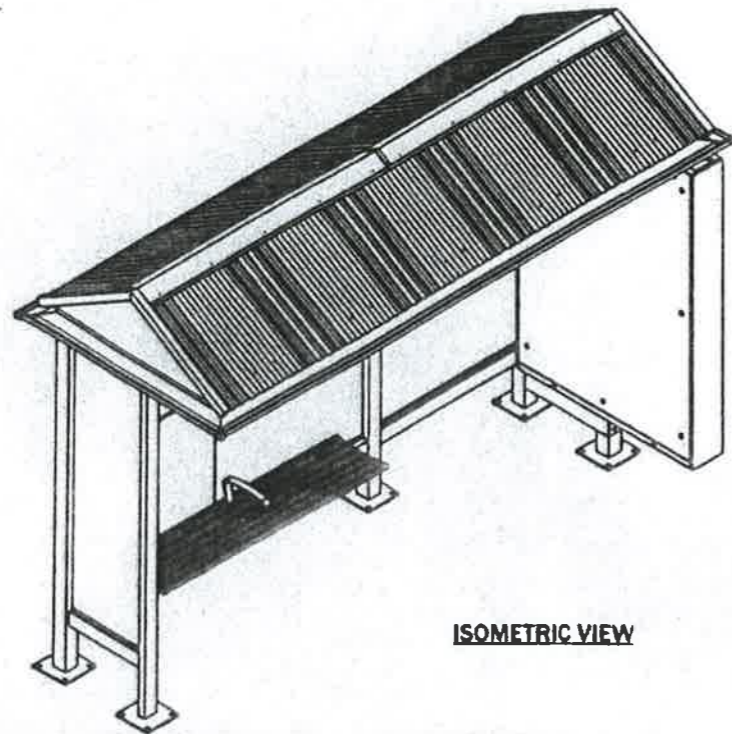
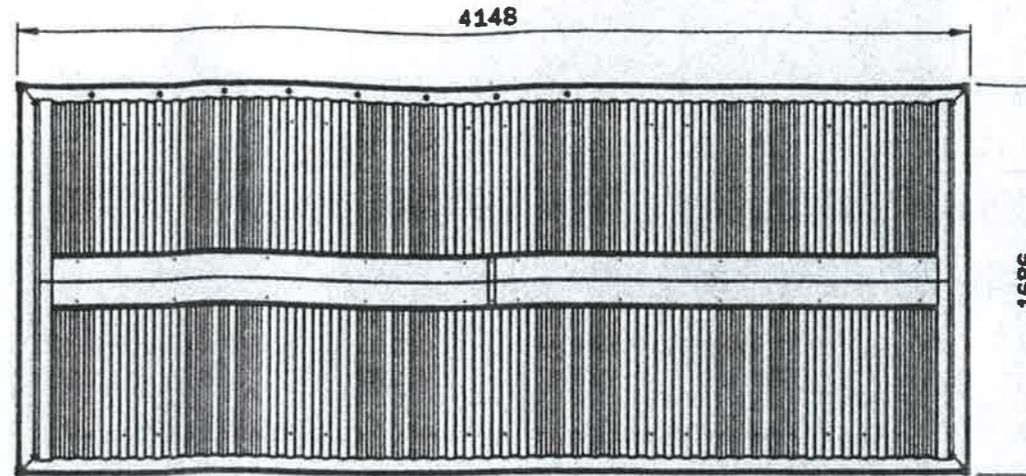


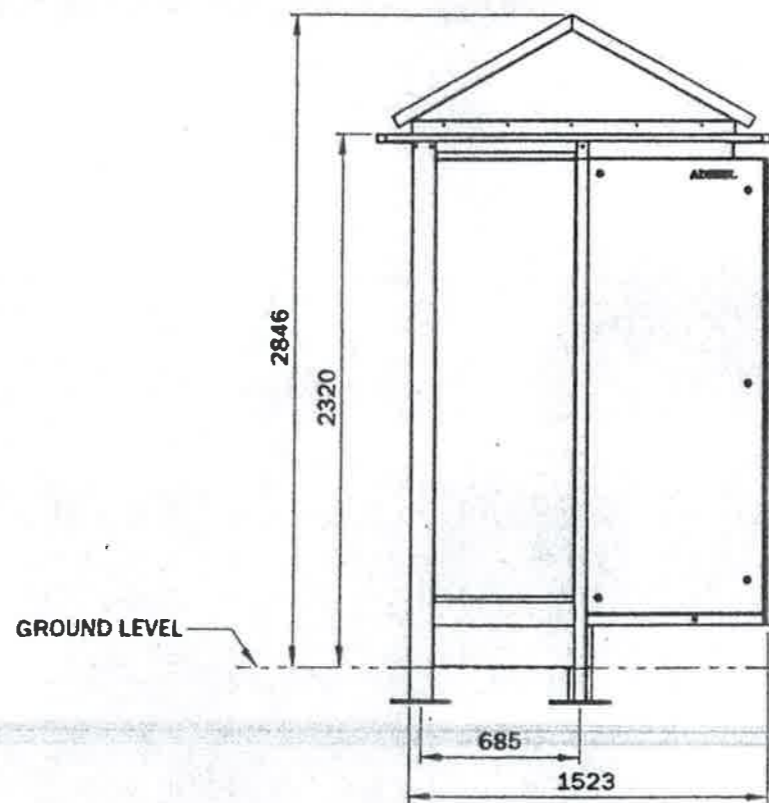
WARRINGAH COUNCIL
 THIS PLAN TO BE READ
 IN CONJUNCTION WITH
 Construction
 Certificate No. *CC2011/0668*



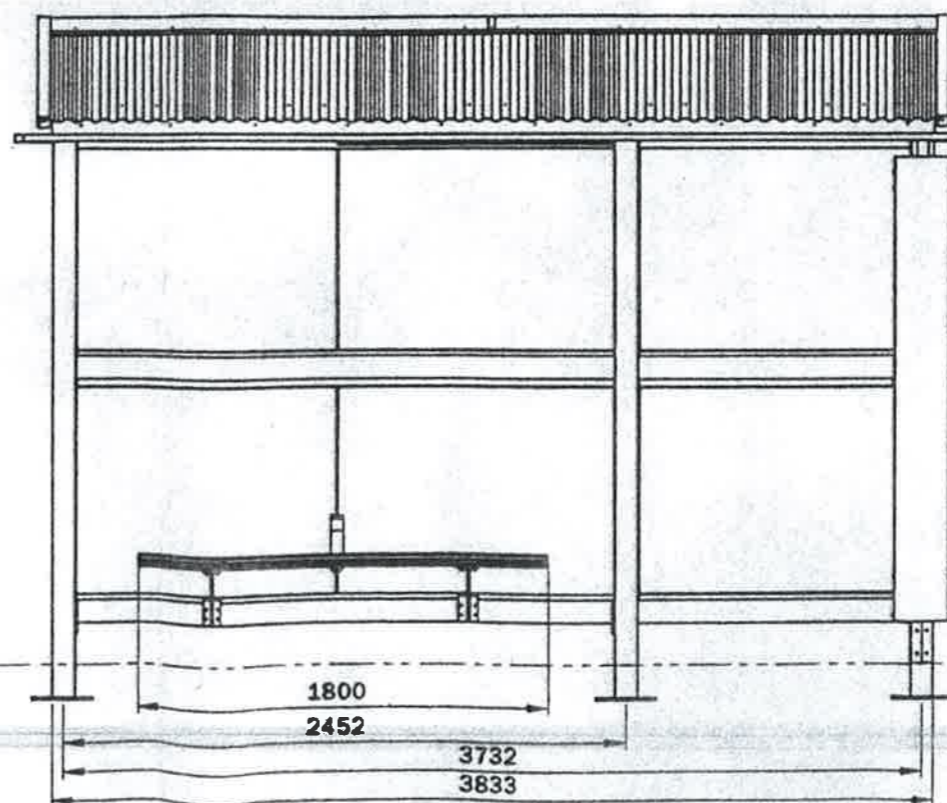
ISOMETRIC VIEW



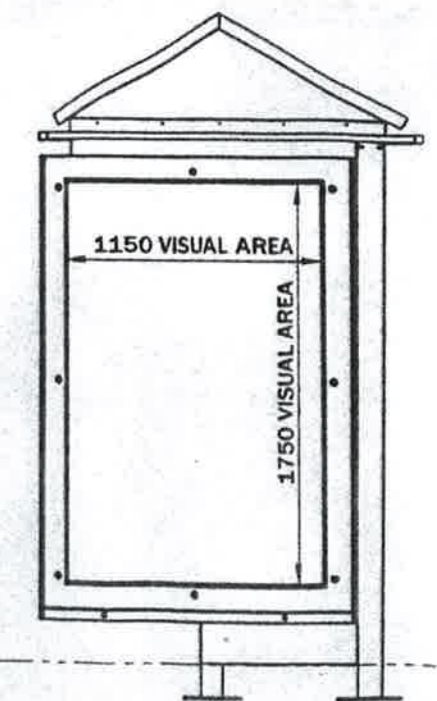
PLAN VIEW



SIDE ELEVATION



FRONT ELEVATION



SIDE ELEVATION

UNLESS OTHERWISE SPECIFIED:
 DIMENSIONS ARE IN MILLIMETERS
 - JOI - INDICATES DIMENSION
 SYMMETRIC ABOUT CENTRELINE

TOLERANCES:
 LINEAR: ± 0.5mm
 ANGULAR: ± 0.5°

DRAWN:
 SB

DATE:
 18/11/2008

CHECKED:

DATE:

MANUFACTURING:

REV DATE:

ADSHEL

The Forum Level 11 205 Pacific Highway
 St Leonards NSW 2065
 t: (+612) 8425 7200 f: (+612) 8425 7222

TITLE:

**OPTISHEL VILLA
 AD-MAINS-FULL BACK**

DRAWING TYPE:
 General Assembly

MATERIAL:

DRAWING NO:

**ELEVATION VIEWS
 50416**

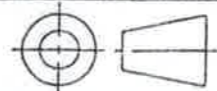
FINISH:
 Powdercoat

SIZE:
 A3

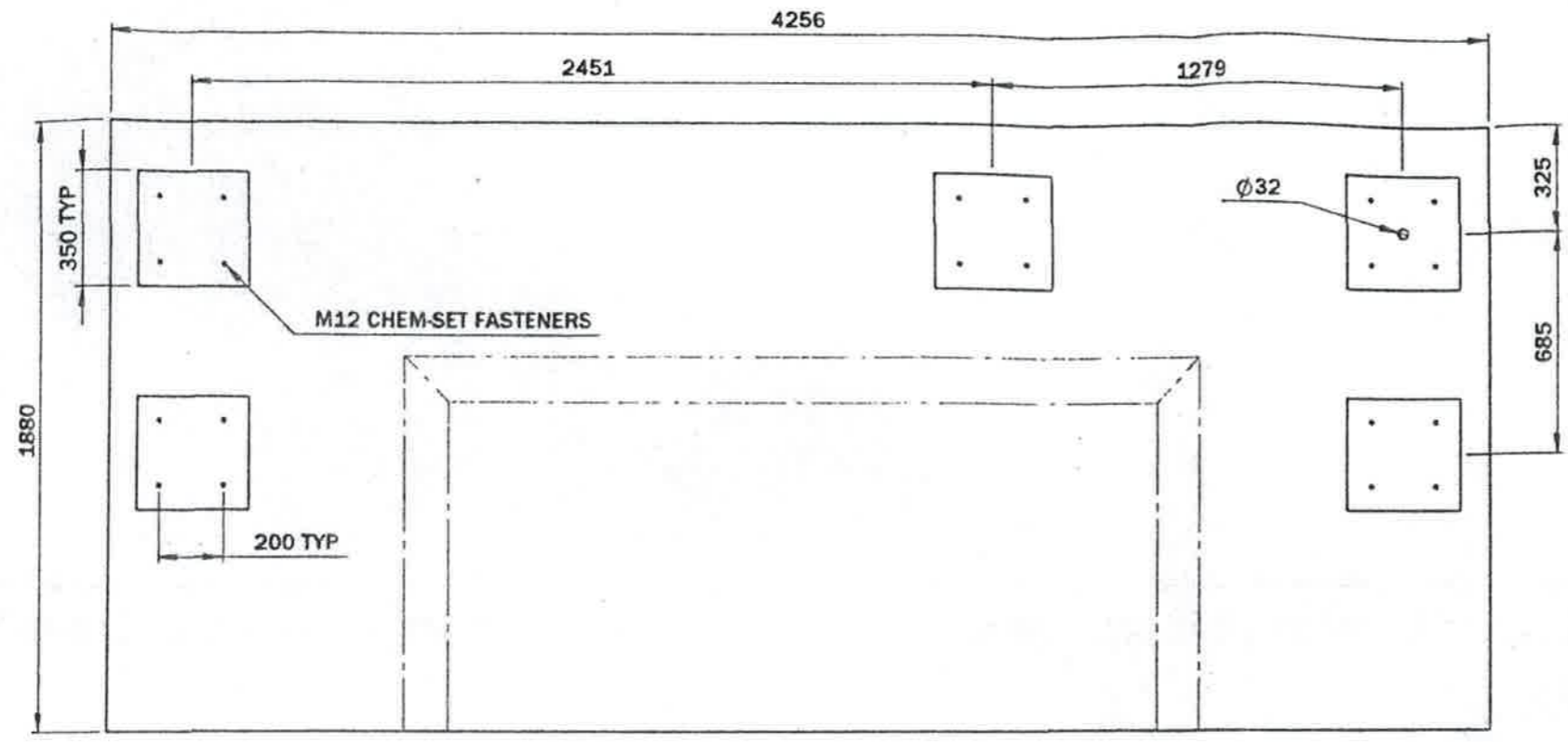
SCALE:
 1:30

SHEET:
 2

CAD GENERATED DRAWING
 DO NOT MANUALLY UPDATE
 DO NOT SCALE DRAWING



WARRINGAH COUNCIL
 THIS PLAN TO BE READ
 IN CONJUNCTION WITH
 Construction
 Certificate No. CC 2011/0668



CONDUIT LOCATIONS ARE CRITICAL

CONCRETE REQUIREMENTS:

- MPA25
- SLUMP 80mm
- MAXIMUM AGGREGATE = 20mm
- MINIMUM DENSITY = 2400kg/mm³

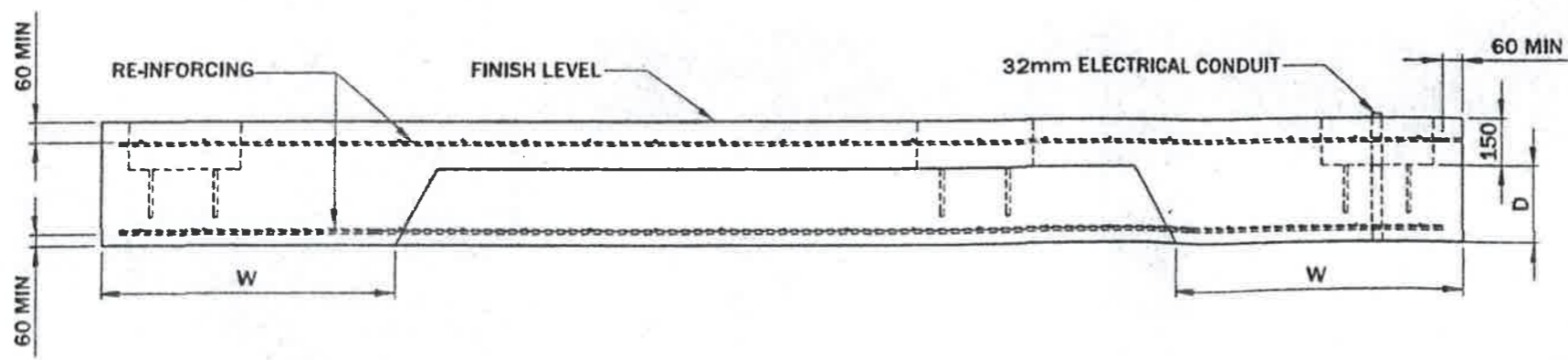
RE-INFORCEMENT:

- MINIMUM COVER OF RE-INFORCEMENT = 60mm

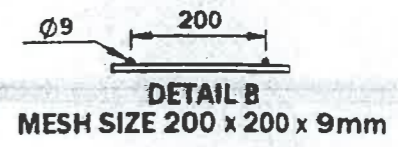
FASTENERS:

- 4 of M12 CHEM-SET FASTENERS PER UPRIGHT, MINIMUM EMBEDMENT = 150mm

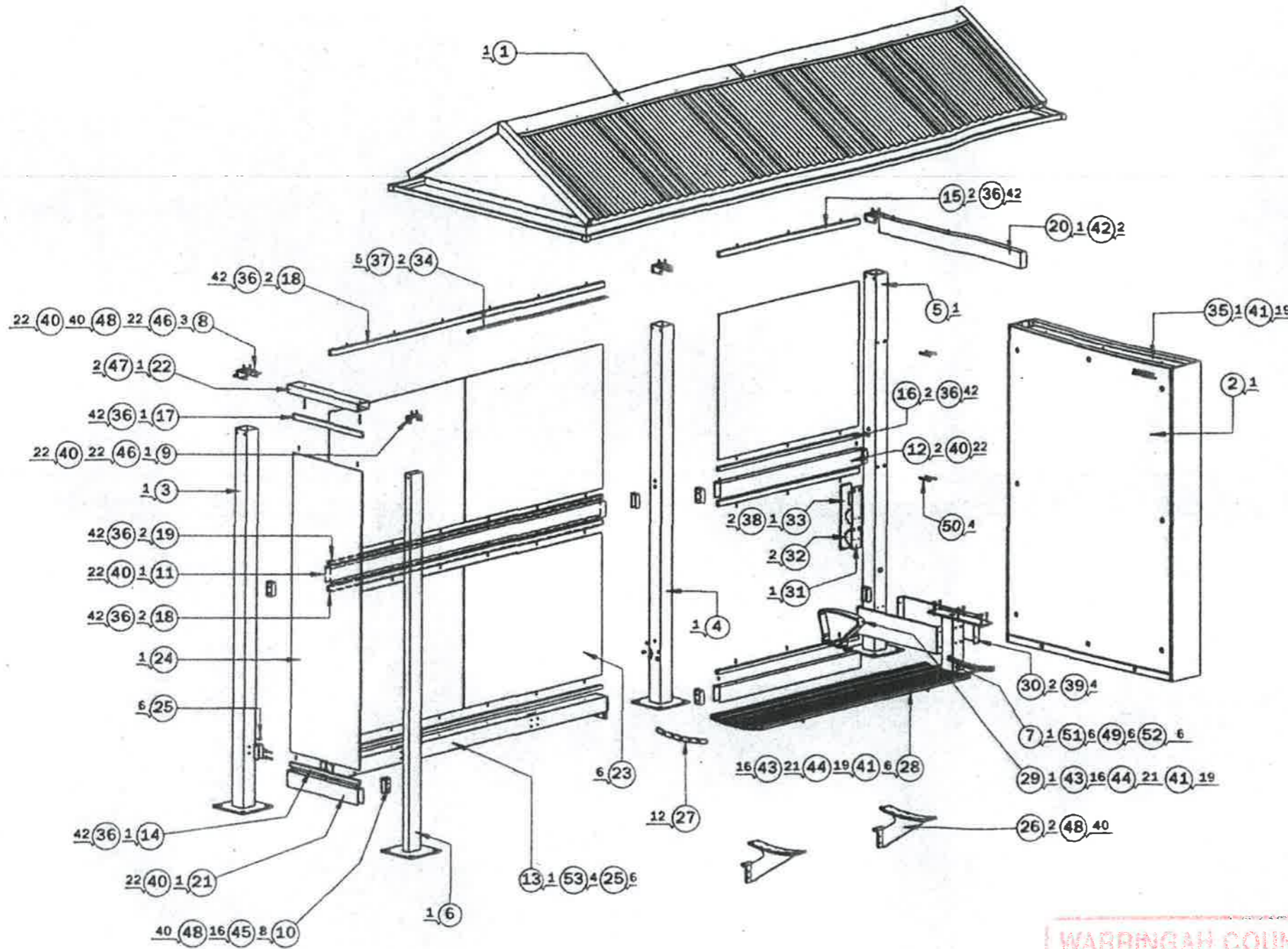
DIMENSIONS BASED ON METRO MkII CERTIFIED FOOTING



REGION	DESCRIPTION	ULTIMATE WIND SPEED (m/s)	W (mm)	D (mm)	RE-INFORCEMENT TOP & BOTTOM
A	NORMAL	50	910	240	RF92 MESH
B	INTERMEDIATE	60	1250	240	RF92 MESH

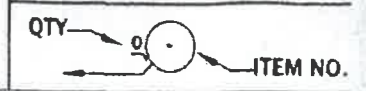


UNLESS OTHERWISE SPECIFIED: DIMENSIONS ARE IN MILLIMETERS <small>- XX - INDICATES DIMENSION SYMMETRIC ABOUT CENTRELINE</small>	TOLERANCES: LINEAR: ± 0.5mm ANGULAR: ± 0.5°	DRAWN: SB	DATE: 18/11/2008	<h1>ADSHEL</h1> The Forum, Level 11, 205 Pacific Highway St Leonards NSW 2065 t: (+612) 8425 7200 f: (+612) 8425 7222	TITLE: OPTISHEL VILLA AD-MAINS-FULL BACK		DRAWING NO: FOOTING DETAIL 50416		
		CHECKED: -	DATE: -		DRAWING TYPE: General Assembly	MATERIAL: -	FINISH: -	SIZE: A3	SCALE: 1:20
CAD GENERATED DRAWING DO NOT MANUALLY UPDATE DO NOT SCALE DRAWING		MANUFACTURING: -	REV DATE: -						

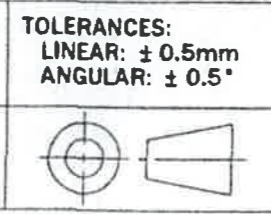


ITEM NO.	QTY.	DRAWING NUMBER	DESCRIPTION	MATERIAL
1	1	50056	VILLA ROOF ASSEMBLY - MAINS SUPPLY	ALUMINIUM
2	1	11550	UNIVERSAL SUPERLITE DSFS	VARIOUS
3	1	12234	UPRIGHT A	ALUMINIUM
4	1	50193	UPRIGHT G	ALUMINIUM
5	1	12236	UPRIGHT C	ALUMINIUM
6	1	12233	UPRIGHT D	ALUMINIUM
7	1	50005	UPRIGHT E	ALUMINIUM
8	3	12241	REAR UPRIGHT BRACKET	SS
9	1	12240	FRONT UPRIGHT BRACKET	SS
10	8	11571	MID&BOTTOM RAIL BRACKET	SS
11	1	50019	MID RAIL LONG	ALUMINIUM
12	2	11570	MID RAIL	ALUMINIUM
13	1	12230	SEAT RAIL	ALUMINIUM
14	1	11582-1	U GLASS HOLDER 1	ALUMINIUM
15	2	11584-2	U GLASS HOLDER 2	ALUMINIUM
16	2	11582-2	U GLASS HOLDER 3	ALUMINIUM
17	1	50022	U GLASS HOLDER 5	ALUMINIUM
18	2	12288	UPPER LONG U GLASS HOLDER	ALUMINIUM
19	2	50000	LOWER LONG U GLASS HOLDER	ALUMINIUM
20	1	12281	UPPER PANEL SUPPORT	ALUMINIUM
21	1	12280	LOWER WINDBREAK SUPPORT	ALUMINIUM
22	1	12279	UPPER WINDBREAK SUPPORT	ALUMINIUM
23	6	11577	BACK GLASS	TOUGHENED SAFETY GLASS
24	1	11578	WINDBREAK GLASS	TOUGHENED SAFETY GLASS
25	6	50033	DOWEL SCREW	SS
26	2	50026	SEAT SUPPORT RATIONALISED	ALUMINIUM CAST
27	12	50004	SEAT END CAP	PP WITH UV PLASTIC
28	6	11575	SEAT SLAT	ALUMINIUM EXTRUSION
29	1	11574	ARM REST	ALUMINIUM
30	2	50030	BASE CLADDING	ALUMINIUM
31	1	12297	ELECTRICAL PLATE	ALUMINIUM
32	2	-	RCD, MCB	-
33	1	50456	COVER PLATE 2	ALUMINIUM
34	1	11968	LED LIGHT SYSTEM	ALUMINIUM
35	1	10668	LIGHTBOX TOP CHANNEL	ALUMINIUM
36	42		#10 x 1" PHILLIPS SELF DRILLING SCREW	
37	5		#8 x 1/2" PHILLIPS SELF DRILLING SCREW	
38	2		M6 X 16 C'SNK SOCKET HD SCREW	
39	4		M6 X 16 BUTTON SOCKET HD SCREW	
40	22		M6 X 20 C'SNK SOCKET HD SCREW	
41	19		M6 X 25 HEX HD SCREW	
42	2		M6 X 25 SHCS	
43	16		M6 NYLOCK NUT	
44	21		M6 PLAIN WASHER	
45	16		M8 X 25 HEX HD SCREW	
46	22		M8 X 35 SHCS	
47	2		M8 X 50 SHCS	
48	40		M8 PLAIN WASHER	
49	6		M10 X 80 HEX HD SCREW	
50	4		M10 X 80 SHCS	
51	6		M10 PLAIN WASHER	
52	6		M10 FULL NUT	

WARRINGAH COUNCIL
 THIS PLAN TO BE READ
 IN CONJUNCTION WITH
 Construction
 Certificate No. CC 2011/0668



UNLESS OTHERWISE SPECIFIED:
 DIMENSIONS ARE IN MILLIMETERS
 - XX - INDICATES DIMENSION
 SYMMETRIC ABOUT CENTRELINE
 CAD GENERATED DRAWING
 DO NOT MANUALLY UPDATE
 DO NOT SCALE DRAWING



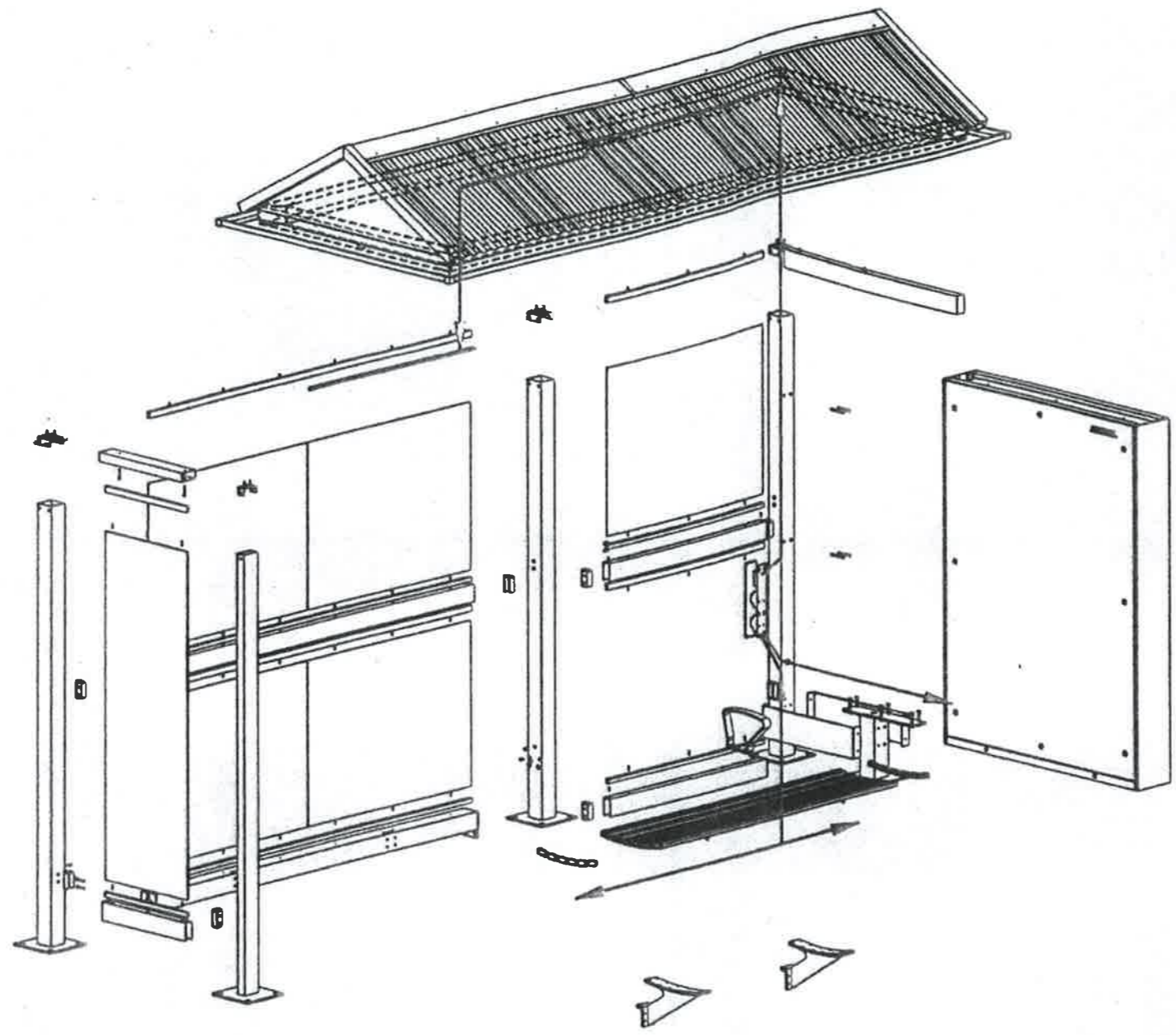
DRAWN: SB
 CHECKED: .
 MANUFACTURING: .
 DATE: 18/11/2008
 DATE: .
 REV DATE: .

ADSHEL
 The Forum, Level 11, 205 Pacific Highway
 St Leonards NSW 2065
 t: (+612) 8425 7200 f: (+612) 8425 7222

TITLE: **OPTISHEL VILLA
 AD-MAINS-FULL BACK**
 DRAWING TYPE: General Assembly
 MATERIAL: .

DRAWING NO: **EXPLODED ASSEMBLY
 50416**
 FINISH: . SIZE: A3 SCALE: 1:30 SHEET: 4

WARRINGAH COUNCIL
 THIS PLAN TO BE READ
 IN CONJUNCTION WITH
 Construction
 Certificate No. CC2011/0668



KEY:
 —▶ SUPPLY = 240V
 —▶ LOAD / LIGHTS = 12V

UNLESS OTHERWISE SPECIFIED: DIMENSIONS ARE IN MILLIMETERS <small>- XX - INDICATES DIMENSION SYMMETRIC ABOUT CENTRELINE</small>	TOLERANCES: LINEAR: ± 0.5mm ANGULAR: ± 0.5°	DRAWN: SB	DATE: 18/11/2008	<h1>ADSHEL</h1> The Forum, Level 11, 205 Pacific Highway St Leonards NSW 2065 t: (+612) 8425 7200 f: (+612) 8425 7222	TITLE: OPTISHEL VILLA AD-MAINS-FULL BACK		DRAWING NO: WIRING DETAIL 50416			
		CHECKED: -	DATE: -		DRAWING TYPE: General Assembly	MATERIAL: -	FINISH: -	SIZE: A3	SCALE: 1:30	SHEET: 5
CAD GENERATED DRAWING DO NOT MANUALLY UPDATE DO NOT SCALE DRAWING		MANUFACTURING: -	REV DATE: -							