



Warringah

Community Based Heritage Study Review



Warringah

Community Based Heritage Study

Review

February 2013

**This report has been prepared by the Sustainable Urban Planning Team,
Environment Division, Warringah Council.**

Funding was gratefully provided for this project by



**With a \$ for \$ grant provided under the Local Government Heritage
Management Program**



Contents

Introduction

Heritage in Warringah

Project Scope

Work Undertaken

Proposed New Heritage Items

Proposed Expanded Existing Items

Future Heritage Management

Recommended Actions

Appendices

A. Proposed Changes to WLEP 2011 (Schedule 5 and Heritage Map)

B. Properties in exiting State Government s.170 Heritage Registers

C. Draft Report – Review of Warringah Historical Themes

D. Consultation Summary

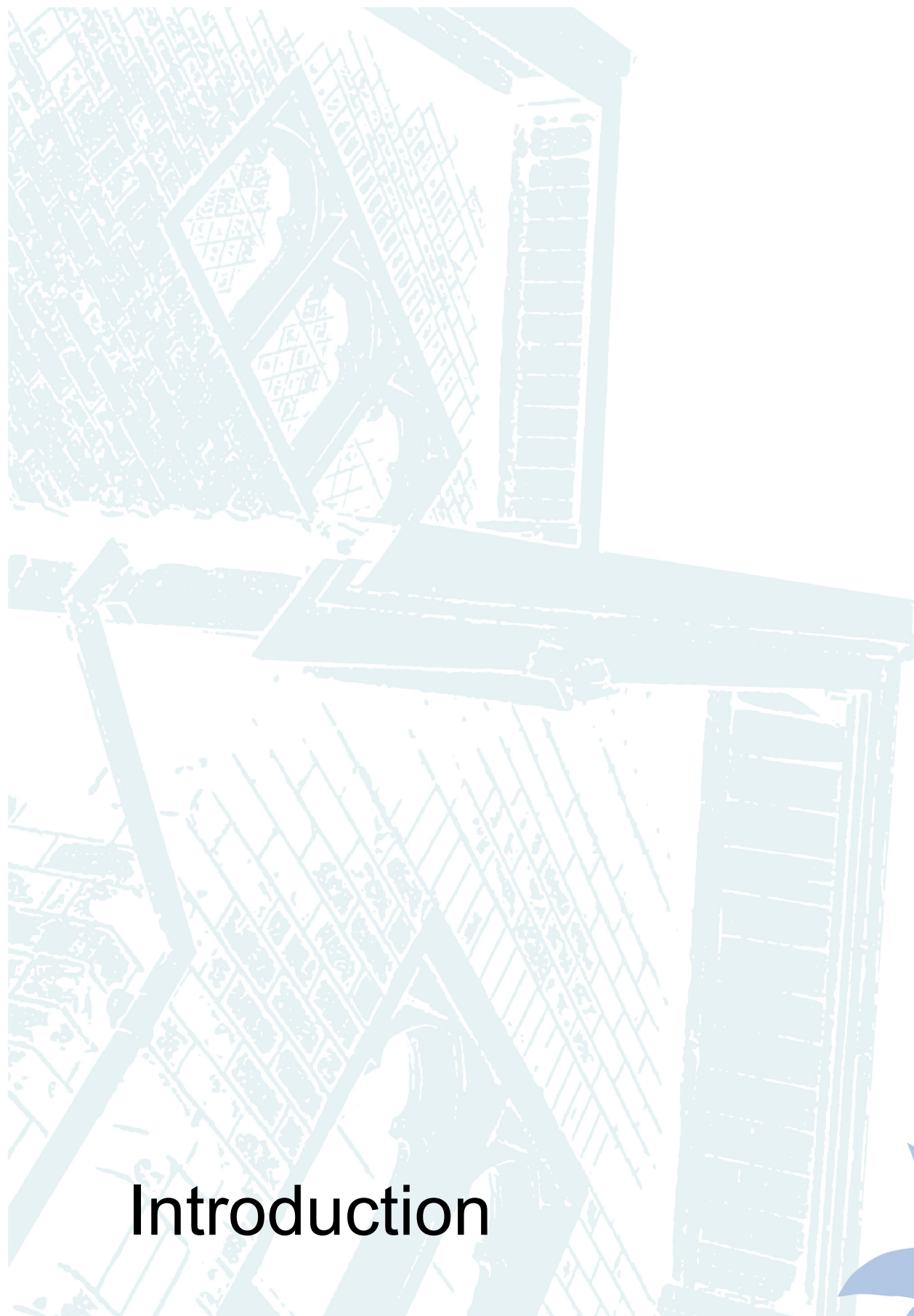
E. Nomination Brochure and Advertisement

F. List of Nominations Received

G. Template for Assessment of Nominations

H. Final Recommendations for all Nominations (December 2012)

I. Proposed New Heritage Items and Expanded Existing Items



Introduction



Purpose

Council has undertaken a review of its Non-Aboriginal or European heritage. This project, known as the Warringah Community Based Heritage Study Review was commenced in late 2010 and has been carried out with the help of \$ for \$ funding from the NSW Heritage Office, as part of the Local Government Heritage Management Fund.

The purpose of this report is to outline the processes undertaken as part of this Heritage Review, provide a detailed report on its findings as well as making recommendations for future action in relation to the management of heritage in Warringah.

All references to heritage in this report refer to Non-Aboriginal or European heritage, being the heritage which is identified within Council's Local Environmental Plan (LEP), Warringah LEP 2011.

What is Heritage?

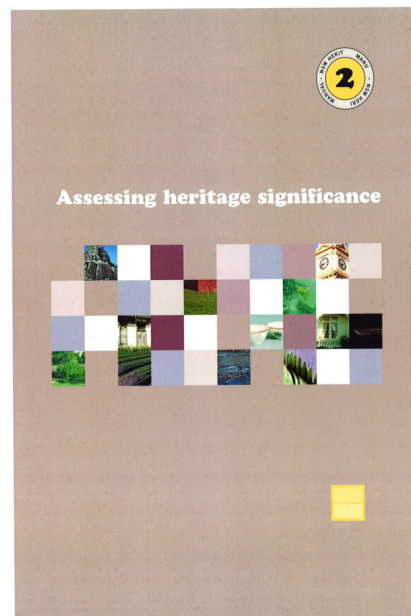
Heritage items are those things from our past, which have been identified as having heritage significance for our community. They are things which have survived from an earlier time and which can illustrate how an area has grown and developed.

A heritage item can take many forms. Most people associate buildings with heritage, but heritage items can also be a tree, an area, a place, a plaque or memorial, an archaeological site or a relic.

Not everything old can qualify as a heritage item and also an item does not need to be old to qualify.

There are established heritage assessment criteria which are used to determine whether an item is of heritage significance. These criteria are set by the NSW State Government and published in the NSW Heritage document titled *Assessing heritage significance*.

An item can be of significance for a number of reasons, including historical or historical associations or it may have aesthetic, social or technical significance. Sometimes the significance is embodied in its physical fabric, but in other instances it is only the historical associations that a place has which can make it significant.



Role of Local Government

Council has an on-going responsibility under the Environmental Planning and Assessment Act 1979 and the Heritage Act 1977, to identify and manage European heritage within its local government area.

The extent of Council's involvement in heritage depends on a number of factors. The prime responsibility is to identify heritage items and protect them by including them within a Local Environmental Plan. On-going management is also a necessary requirement, but the way this is done varies widely.

The main areas of a local Council's involvement in heritage are clearly outlined by Heritage Victoria, in their document titled, *Local Government Heritage Strategies*.

They identify the four main areas of Council's involvement as:-

- **Knowing:-** *identifying, assessing and documenting heritage places.*
- **Protecting:-** *securing statutory protection for significant places, developing policy/guidelines to assist decision making, appropriate management.*
- **Supporting:-** *incentives, advisory services, financial assistance.*
- **Communicating and Promoting:-** *measures to raise awareness and appreciation of the heritage of the area.*

Traditionally, Council's are very good at the *Knowing* and *Protecting* phases - doing the identification and statutory protection, but often don't follow through on heritage management, promotion and incentives issues (*Supporting, Communicating and Promoting* phases). Often this is due to time and cost constraints.

This Warringah Community Based Heritage Study Review focuses on the *Knowing* phase – that is making sure that existing heritage items are correctly identified and additional items, worthy of listing, are identified.

The next phase will encompass *Protecting*, which will ensure that new items are given statutory protection by being added to Council's LEP and that existing items are correctly described in the Local Environmental Plan. This Review will make recommendations to ensure that this phase is undertaken, now that the identification phase is completed.

The other two phases, *Supporting* and *Communicating and Promoting* will need to be addressed following completion of this Heritage Review. They are essential to support and manage the heritage listings. This issue is briefly addressed in this Report and some recommendations are made to ensure that these phases are not forgotten.

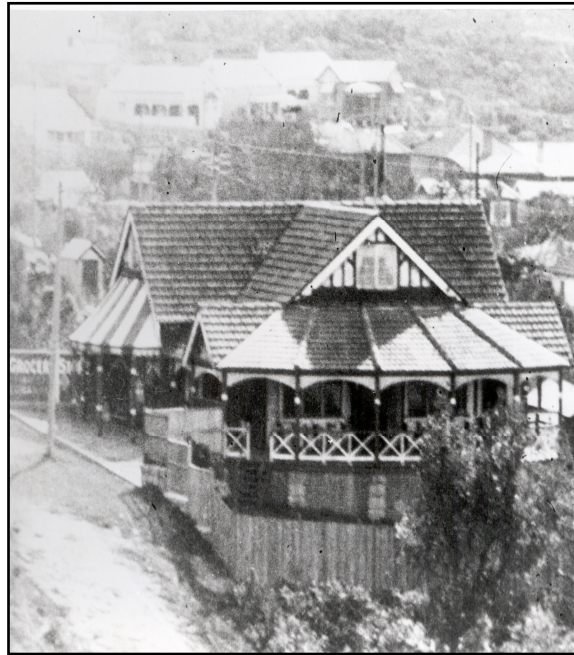


Heritage in Warringah (What is already listed?)

Heritage items in Warringah are listed within Council's zoning document, known as Warringah Local Environmental Plan (LEP) 2011. The heritage items are listed in Schedule 5 of this Plan. There are Heritage Items, Heritage Conservation Areas and Archaeological Sites, listed by suburb.

This schedule is Council's "heritage list". This list is also supported by a Heritage Map, which locates on a map, all the items and areas in this schedule.

Schedule 5 is a statutory list and there are specific clauses within the Warringah LEP 2011, which apply to these items and areas.



Freshwater Kiosk c. 1918

Every item is supported by a corresponding Inventory Sheet within the Warringah Heritage Inventory. This Inventory Sheet provides more detailed information on each of the listed heritage items and areas. This information includes what is listed and why it is of heritage significance to Warringah.

Currently there are approximately 145 items and areas of significance currently listed in Warringah. These include a wide variety of items including private dwellings, commercial buildings, ocean rock pools, coastal cliffs, bus shelters, memorials, street trees and parks.



Narrabeen Fire Station



Street Trees - Riverview Pde North Manly



Freshwater View Reserve – Pavilion St Queenscliff

Existing heritage items can be searched via Council's website, under *eServices*. You can search under the "Heritage Item" tab, via address, street, suburb etc. This service provides material extracted from the Warringah Heritage Inventory database. It includes information on what is listed, the why it is listed (Statement of Significance), physical description and some photos.

Council maintains the Warringah Heritage Inventory, which uses database software provided by the NSW Office of Heritage. This is the standard software used to record heritage items and areas, which is used by all local councils throughout NSW. The database is periodically uploaded to the NSW Heritage Office so that the Heritage Database available on its website is up to date.

Warringah Council has not uploaded its heritage database for some 10 years and as a consequence, the database on the NSW Heritage website does not accurately reflect the current list of heritage items and areas in Warringah.



ANZAC War Memorial – Veterans Pde Collaroy



North Curl Curl Rockpool

How were these existing heritage items identified?

Warringah's existing heritage items were largely identified in Heritage Studies prepared for Council in the early 1990's, by heritage consultants. This means that existing listings are largely based on surveys and documents which were prepared nearly 20 years ago. A number of minor reviews have occurred since that time, but there has been no major review of existing heritage items.

These studies include:-

- Barrenjoey Peninsula and Pittwater Heritage Study (1988) by MacDonald McPhee (NOTE: this only applies to Cottage Point)
- Warringah Heritage Study (1994) by Hughes Trueman Ludlow
- Warringah Heritage Study –Further Stages (1995) by Terranova Planning Pty Ltd

As mentioned, items of local heritage significance are listed within Warringah Local Environmental Plan (LEP) 2011. This LEP came into force in December 2011, and replaced the previous LEP, known as Warringah Local Environmental Plan (WLEP) 2000.

This new LEP was a translation of the old LEP into the new standard template. This means that the heritage items currently listed are essentially the same as those which were listed under WLEP2000.

This also means that the current list of heritage items in Warringah largely date back to the recommendations from the original Warringah Heritage Study completed in 1994.

History of heritage protection in Warringah

When Warringah also included the Pittwater area, the Barrenjoey Peninsula and Pittwater Heritage Study was prepared by MacDonald McPhee (1988). This Study included Cottage Point, which remained within the Warringah local government area.

The Warringah Heritage Study was then prepared by Hughes, Trueman & Ludlow (1994) and this was followed by the Warringah Heritage Study (Further Stages) Report by Terranova Planning (1995).

The results of the Warringah Heritage Study were exhibited in the late 1990's and a heritage amendment was prepared, which was reported to Council in May 1998.

The results of the Warringah Heritage Study were incorporated into Warringah Local Environmental Plan 2000 (WLEP 2000), which was gazetted in December 2000.

In 2006, following the State Government's direction to Council to prepare a standard local environmental plan, Council embarked on translating WLEP 2000, as closely as possible, into the standard template format. This resulted in Warringah Local Environmental Plan 2011, with only minor changes made to the heritage list brought over from WLEP 2000.

COLLARROY HEAD

MAIN CANAL
AGENCY
FOR SALE



Project Scope

Warringah Community Based Heritage Study Review

Council has a responsibility to review and update its list of heritage items. A Project Plan was prepared in 2010 to undertake a Community Based Review of Warringah's Heritage. Without the funds for a complete review, it was decided to involve the community in the Review – as the community hold a collective knowledge about the history and development of Warringah. The aim was to tap into this knowledge, and use it to assist Council in updating its heritage list.

Project Objective

“A more comprehensive and accurate list of heritage items and heritage conservation areas which warrant statutory heritage listing and protection”

The project is defined as a review of Warringah's existing European (or non-Aboriginal) heritage listings, and was proposed to be carried out over seven (7) main stages:-

Stage 1 - Review of Existing Items and Listing Details

Stage 2 - Identification of Potential Heritage Items

Stage 3 – Assessment of Potential Heritage Items

Stage 4 – Results reported to Council and adoption of draft list for Exhibition

Stage 5 – Public Exhibition of Proposed Heritage Items

Stage 6 – Report to Council and Resolution to prepare Heritage Local Environmental Plan

Stage 7 – Implementation and Preparation of draft LEP amendment

This Report

This report is essentially Stage 4 of the Project, as it pulls together all the *Review, Identification and Assessment* work carried out over Stages 1, 2 and 3.

Based on the four theme areas of heritage management, as described by Heritage Victoria, this part of the Project is the *Knowing* phase – being the identification of heritage items.

Stages 5, 6 and 7 are essentially a separate project being the implementation of the results of the Heritage Review. This second part of the Project is the *Protecting* phase – being the statutory protection of the heritage items identified.

The other 2 theme areas of heritage management are *Supporting and Communicating* and *Promoting*.

While the Warringah Heritage Review is primarily about identification and protection of new heritage, these areas of Support and Promotion are important aspects which need to be addressed in future work. Therefore, this report briefly also looks at these issues and makes various recommendations for future work, to support the management and community knowledge of the importance of heritage.



Work Undertaken



Warringah Council

Stage 1 – Review of Existing Items and Listing Details

Errors in current listings

As mentioned, the heritage list in WLEP 2011 is a translation of the heritage items which were within Warringah LEP 2000. As a result, the current heritage list still contains a number of errors in the description, listing and mapping of these heritage items and areas.

A thorough review has been undertaken of these existing items and a detailed list of proposed changes can be seen at Appendix B. This list details all the “housekeeping” changes required to the current Schedule 5 and also to the Heritage Map of WLEP 2011.

In most cases a change is required to the wording included within Schedule 5 of the LEP, however in a number of cases, a change to the LEP Heritage Map is required, and these are highlighted in yellow.

These changes are needed to more accurately describe the item, to more accurately identify its location (by correcting lot and DP details or correcting the map), to ensure consistency in the way items are described and to ensure consistency with Council's GIS database.

Appendix A lists all the necessary changes, identified by their existing LEP Item No.

Consultation with owners of existing items

As part of this review of existing items, all owners of current heritage items were advised in writing that Council was undertaking a Heritage Review. The purpose of this was to provide an opportunity for owners of heritage items to contribute to the Review.

These letters were sent in April 2011 and in response, two (2) formal requests were received, which both requested that existing heritage items be removed from the current heritage list. These items were:-

“Long Reef Garage”, 2 Hay Street, Collaroy (being Part Lot 6 Sec 6 DP 11358)

“Ballagh”, 5 The Avenue, Collaroy (being Lot 24 DP 7001)

Both these requests were accompanied by supporting information in the form of Heritage Assessment Reports.

Existing State Government heritage lists (section 170 registers)

All State Government departments are required to establish and keep a register of any heritage items in their ownership. These registers are called section 170 Registers as they are required by the provisions of s.170 of the Heritage Act, 1977.

In Warringah, s.170 Registers have been prepared by Sydney Water, Roads and Maritime Services and Dept of Public Works. The majority of the heritage items identified are not currently included within Warringah's LEP.

These items have already been assessed based on established heritage criteria and it has been determined that they meet the criteria for listing. They already

appear on the NSW Heritage website as heritage items within Warringah, but this is not reflected within Council's LEP.

These listings are supported by Heritage Data Forms and should be included within Council's LEP so that it reflects a complete list of heritage items in Warringah.

A list of properties included in existing State Government s.170 Registers, but not currently in WLEP 2011, can be seen at Appendix B.

Historical Themes Review

Need for Themes Review

While not a specific component of this Heritage Review, it was considered necessary to look at the existing historical themes identified in Warringah. Historical themes are the context within which heritage listings are made. There are set National themes and set State themes however it is up to Council to determine what Local historical themes apply to the development of its area.

An Historical Context Report was prepared as part of the original Warringah Heritage Study. This was prepared in 1991 by historian Judy Wing, who was part of the Hughes Truman Ludlow Heritage Study team. At that time, the NSW State heritage themes were only in draft form, so there was no formal adopted framework for the development of Warringah's historical themes.

Initial Review of Historical Context Report

Given that this Historical Context Report was prepared some 20 years ago, it was considered necessary for it to be reviewed.

As part of the Warringah Community Based Heritage Study Review work, a brief for an Historical Themes Review was prepared. As Council has an historian on its Warringah Heritage Panel, being Sue Rosen, this brief for an Historical Themes Review was issued to Sue Rosen in December 2010.

The main purpose was to clearly identify and describe the historical themes relevant to Warringah's heritage. This was considered essential to ensure a consistent application of historical themes to both existing heritage items and any potential items and to ensure that there is a clear link between items listed and historical themes.

Sue Rosen undertook this work in January/February 2011 and presented Council with a Draft Report. A copy of this Draft Report can be seen at Appendix D.

Ms Rosen determined that the previous Historical Context Report by Judy Wing, was historically sound. As it was completed in 1991, it obviously needed historical updating for the period of development of Warringah from 1991 until today.

Sue Rosen also looked at the NSW State heritage themes and how they related to Warringah's historical context. A number of gaps were identified. Themes not expanded upon in the original Historical Context Report included Religion, Education, Birth & Death, Domestic Life, Sport, Fishing, Mining and persons. Also, it was considered that Transport and the bus and tramway system theme could have been developed further. Ms Rosen concluded, by listing a number of aspects of Warringah's recent history, which are worthy of investigation.

Essentially, it was determined that a complete Historical Themes Review should be prepared, which updates the Historical Context Report and reviews existing heritage themes and expands upon those unique and special themes which are evident within Warringah.

Recommendations for Further Work

As a result, it is recommended that Council commission a new Historical Context Report, which builds on the 1991 historical information and also uses Sue Rosen's draft report on the up-dated themes. The resultant outcome will be a 2013 Historical Context Report, which will largely rely upon the 1991 report.

It will be a well presented document of Warringah's history and the main themes involved in its development. It is anticipated that this will be done during the 2013/2014 financial year and funds have been identified in the 2013/2014 budget for this project.

Once this Report has been finalised, the inventory information for all heritage items in Warringah, will need to be checked to make sure that the newly revised heritage themes are reflected against each listed heritage item.

Stage 2 - Identification of Potential Heritage Items

Background

A comprehensive review of all properties in Warringah to identify potential items of heritage significance was financially and logistically not possible. Instead, it was decided to adopt a community based approach to the Warringah Heritage Review.

The traditional system of identifying heritage items relies a lot on whether it is visible from a public place, such as a street. As a result, this method often results in not all items of heritage significance being identified. Often heritage items are hidden from public view or may be places in which the significance is embodied in its historical associations, rather than its physical fabric.

As the local community of an area have lived through its development and growth, they hold a collective knowledge which is useful in identifying missed items of heritage.

It was on this basis that Council decided to involve the community in the identification of potential items of heritage significance.

Call for Nominations of Potential Heritage Items

A call for nominations of potential heritage items was held from 9th April until 27 May 2011. As many avenues as possible were used to make the community aware of this search for new heritage items. This included:-

- display ads and other notices in the local newspaper;
- preparation and distribution of brochures and posters;
- information on Council's website;

- notification to the local historical society; and
- consultation with members of Council's Heritage Community Committee.

More details can be seen in the Consultation Summary included as Appendix D.

All owners of existing heritage items were also contacted at the same time. Also, Council development assessment staff were asked for nominations, based on things they may have come across in the course of doing their job.

A copy of the Call for Nominations brochure and the display advertisement, can be seen at Appendix E.

Response to Call for Nominations

In response to this call for community nominations, a total of 69 submissions were received, many of which nominated multiple properties. The number of properties affected by these nominations was more in the order of 100.

A list of all nominations received can be seen at Appendix F. The majority of nominations were for built items, mainly houses, however there were a variety of other nomination types, including trees, groups, areas and relics.

In most cases, the owners of these properties were unaware that their property had been nominated. Therefore, before the Heritage Review could proceed, it was necessary to write to all owners of these nominated items. They were advised of the Warringah Community Based Heritage Study Review and also about the process which was to follow.

Owners were encouraged to make submissions to Council if they had any further information which would support, or otherwise, the proposed nomination of their property as a potential heritage item.

Stage 3 – Assessment of Nominated Heritage Items

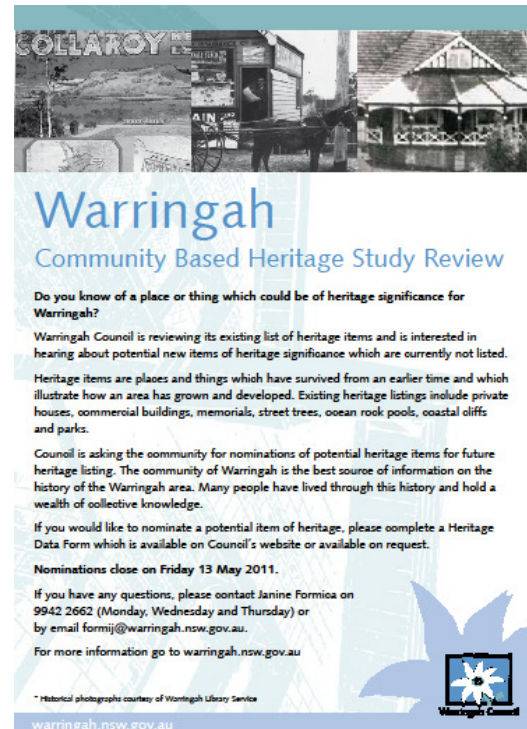
Assessment of requests to remove existing items

As mentioned, two requests were received from owners of existing heritage items, being:-

“Long Reef Garage”, 2 Hay Street, Collaroy (being Part Lot 6 Sec 6 DP 11358); and

“Ballagh”, 5 The Avenue, Collaroy (being Lot 24 DP 7001)

Both were accompanied by Heritage Assessments which supported their request for removal of their property from the heritage list. These requests were reviewed by a heritage expert from the Warringah Heritage Panel. In both cases the conclusion was that it was appropriate for these items to be removed from Council's heritage list.



The owners have been advised of this and it is recommended that both these properties be removed from Schedule 5 of WLEP 2011.

Assessment of Community Nominations Received

All 69 nominations received were assessed to determine whether they met the criteria for heritage listing. The first stage was a general review of all nominations against the heritage assessment criteria set out in the NSW Heritage Office document titled, *Assessing Heritage Significance*.

A template was developed, so that all consultants used the same assessment approach. A copy of the Assessment of Nominations template can be seen at Appendix G.

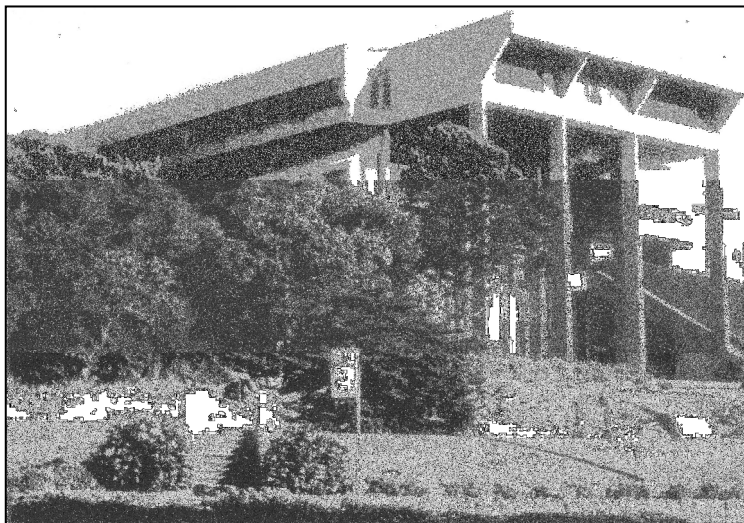
All nominations were assessed, regardless of the amount of supporting information provided. Some nominations were supported by a comprehensive Heritage Data Form, while others had no supporting information at all. Despite this, it was decided to assess all nominations equally.

To assess these nominations Council used the heritage expertise available on the Warringah Heritage Panel. This is a panel of heritage consultants of varying expertise, who are on retainer to Council to provide expert heritage advice. As most of the nominations received were for built or landscape items, the following heritage consultants were used to assess the nominations received:-

Robert Moore – Heritage Architect
Zoran Popovic – Heritage Architect
Noel Ruting (Landarc Pty Ltd) – Heritage Landscape Specialist
Chris Betteridge (Musecape Pty Ltd) – Heritage Landscape Specialist

As mentioned, before the assessment process commenced, all owners of the nominated properties were advised of the nomination and invited to provide any relevant information to assist in the assessment of the nomination. This was particularly important, given that some nominations were made with no supporting information.

It was also very important to give the owners an opportunity to make a submission or object to the proposed listing of their property.



Warringah Council Chambers 1973

Preliminary Assessment of Heritage Significance

This first stage of the assessment process determined which nominations were likely to meet the criteria for heritage listing and which did not. The criteria used were the NSW Heritage Office's guidelines *Assessing Heritage Significance*. This document includes inclusion and exclusion criteria for assessing heritage significance.

This process resulted in a list of nominations which were likely to meet the criteria for heritage listing and a list of nominations which did not meet the criteria.

The nominations that did not meet the threshold for heritage listing were then excluded from the review process. The owners of these properties (48 owners) were advised in writing, that Council would be taking no further action in relation to the heritage nomination of their properties.

The owners of properties which were considered likely to meet the heritage listing criteria (51 owners) were also advised in writing that this was the case and that Council would be continuing to investigate the heritage listing of their property.

Also, at this stage, all nominators were advised in writing of the outcome of this initial assessment of all nominations by the heritage consultants.

Assessment Review of Heritage Significance

As a result of this, further submissions were received from those owners where the recommendation was to pursue heritage listing. Most of these owners objected to the recommendation to proceed with heritage listing of their property. Many also expressed concern about the process, whereby any individual in the community could make this nomination, which would affect their property.

All these additional submissions/objections were referred back to the assessing heritage consultants, so that they could take these comments into account and review their original recommendation, if considered necessary.

This process of review resulted in a change to a number of the previous recommendations. A number of nominations which were previously recommended to proceed were revised and a new recommendation was made, not to proceed with heritage listing.

In all cases when a recommendation was changed, the owners of those properties were advised in writing that Council would not be taking any further action in relation to heritage listing of their property. The revised assessments affected 31 owners (22 of which were part of the proposed heritage conservation area for Virginia Place/Altona Ave).

Recommended List of Proposed New items

This preliminary assessment and assessment review process has taken a considerable amount of time, but the resultant outcome is a refined list of proposed new heritage items which will be put forward for listing in Warringah's Local Environmental Plan.

The table at Appendix H lists all the 69 nominations received and also a final recommendation against each nomination. Those highlighted in yellow are the nominations which are recommended to proceed to heritage listing. It is these final recommendations which are now proposed to be implemented.

These final recommendations propose that 14 new heritage items be added to Council's statutory heritage list. The recommendations also propose that 3 existing heritage item listings be expanded to widen the area covered by the listing or the details of the heritage item.

These proposed new heritage items can be seen at Appendix I, listed by suburb. The proposed expansion of existing heritage items can also be seen at Appendix I, listed by its existing Item No.

All these proposed new heritage items and expanded existing heritage items are supported by a completed Heritage Data Form which provides a detailed description of each proposed heritage item along with information of any known history about the proposed item. Each Heritage Data Form also includes a Statement of Significance. This is the statement which describes what is significant about the proposed item and why it should be listed.

Details of all proposed new heritage items and expanded existing heritage items, can be seen in the following section, which attempts to provide an overview of the items which have been determined as being worthy of protection by heritage listing.



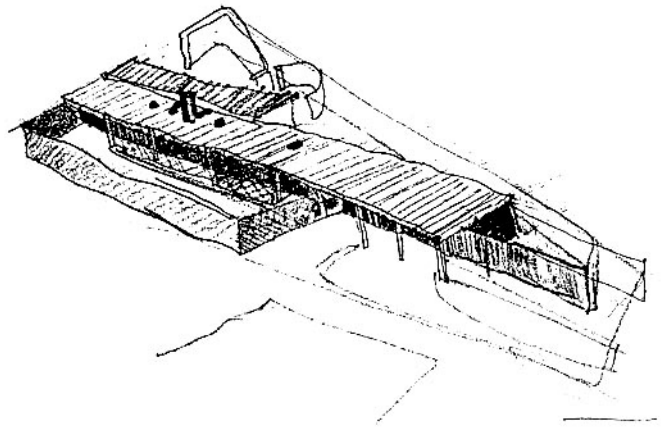
Proposed New Heritage Items

Douglas L Murcutt House, 22 Yarrabin Street, Belrose

This house was designed by the eminent Australian architect, Glenn Murcutt, for his brother Doug. It was built between 1969 and 1972. The house is an important milestone work in 20th Century Australian Domestic architecture, being awarded a NSW RIAA Merit Award in 1975.

The house has an elongated rectangular plan form, arranged perpendicular to the street, so that its long side faces north. The northerly façade is composed of large sliding doors to receive sun into the house.

The house is a pivotal example of Glenn Murcutt's early work and is an important demonstrative example of late 20th century modern architectural architecture in Australia – both in its construction and furnishing. It's interiors are as important as its exteriors and setting.



Drawing by Glenn Murcutt 1969



Photos by Max Dupain 1972



The house is still owned by Douglas Murcutt, who lived in the house until 1997, when he retired to the Adelaide Hills. In his submission, Doug Murcutt advised that this house was one of the first projects completed by his brother Glenn, after establishing his Sydney practice.

Trees surrounding Brookvale Park, Pine Ave, Federal Pde, Alfred Street & Pittwater Road, Brookvale

These trees form a more or less contiguous green belt around Brookvale Oval. They are an example of Inter-war row plantations, with mixed and single species.

The trees with their interlocking canopies and substantial scale create a strong visual foil and a distinctive sense of place. The trees include multi-stemmed mature Brush Box (*Lophostemon confertus*) and Camphor Laurels (*Cinnamomum camphora*).



The trees were largely planted around the perimeter by local school children as part of annual Arbor Day celebrations. They were planted between 1919 and 1928. These children were from the neighbouring Brookvale Public School, which shares significant historic links with Brookvale Park.

As such, these trees are typical of Sydney's public plantings schemes which were prevalent in the early 20th century. The trees have local significance in terms of their long association with the development and use of the site as a showground, a park and a sportsfield.

It is noted that the Cottonwood Poplars on the southern side fronting Pittwater Road, are a later planting (1970's) and they do not have the historic associations of the earlier plantation row plantings.



House, 971 Pittwater Road, Collaroy

This house is a very fine example of a beach holiday cottage, constructed carefully of simple materials.

It is a single storey timber framed cottage, set elevated upon brick piers and clad in weatherboard and fibrous cement (asbestos cement) sheeting with cover battens.

It has a jerkin head roof clad in asbestos cement shingles with terracotta ridging. Other features include a roughcast plastered brick chimney, front covered verandah and timber double hung and sliding sash windows.



This is an increasingly rare example of the beach holiday cottage type of building, which is disappearing within Warringah.

The house is distinctive for its design, presentation and condition.



House, “Silver Mist” 1035 Pittwater Road, Collaroy

This house is a good, well kept example of a substantial two storey “Moderne” residence (also known as P & O style). It is on a prominent corner site and appears to be well looked after



“Sunnybank” House, 13 Worchester Street, Collaroy

This house is a good example of a single storey Californian Bungalow cottage, which would have been built about 1925 – 1930. It displays high integrity, being well maintained and very intact.

Its design, with front and side verandahs, addresses its corner block position and it still has its original front fence.



Remnant Native Street Trees, Anzac Ave and Hendy Ave, Collaroy

These trees are a cluster of native canopy trees which occur in the public road-side verges of Anzac Avenue and Hendy Avenue. These trees are remnant components of the former open forest community on sheltered hill slopes (Sydney Sandstone Gully Forest). This ecological community has been largely cleared in the Collaroy area.

Sydney Pink Gums (*Eucalyptus costata*) occur with Grey Ironbarks (*Eucalyptus paniculata*), indicating a transitional sandstone-shale surface geology. This community is still common in Pittwater, but rare in Warringah LGA. These groups include old growth trees, including one outstanding Angophora Costata on the boundary of No.57 Anzac Avenue.



Anzac Avenue verge - Ironbarks & Sydney Pink Gums



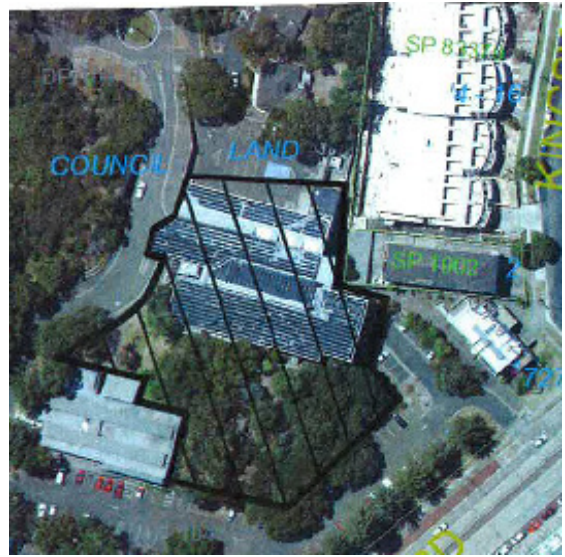
Angophora Costata – boundary of 57 Anzac Ave

Warringah Civic Centre and Landscaping

The Warringah Council Civic Centre is an important large scale public building of the late 20th century 'Brutalist' style of architecture and demonstrates indigenous landscape design in Australia.

Warringah Civic Centre is significant for representing the work of distinguished architect Col Madigan, who was awarded the Gold Medal by the Royal Australian Institute of Architects for a lifetime effort in the field of architecture in 1981.

The building is also important for its association with the architect Chris Kringas who made a major contribution to the design development.



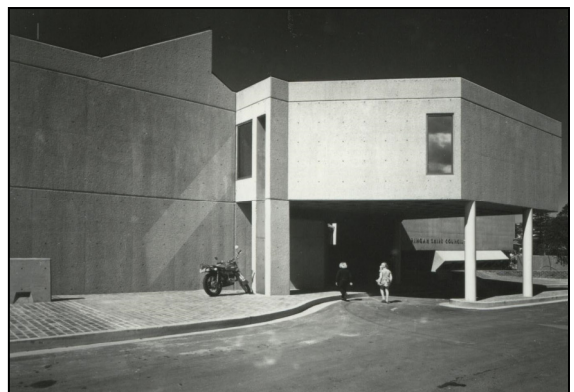
Extent of proposed Civic Centre listing

This site is also important as an early design of prominent landscape architect Bruce Mackenzie, a leading figure in the establishment of landscape design in Australia and represents his then innovative ideas of preserving and using the site's natural landscape and flora.

The site is a rare example of the late 20th century 'Brutalist' style applied to a large-scale public building within a substantially intact native bushland setting, with a high degree of creative and technical achievement. The extent of the proposed listing can be seen on the attached map.



Photos by Max Dupain - 1973



Waratah Park, including Rangers Headquarters, 13 Namba Road, Duffys Forest

This site, known as “Waratah Park” comprises 12.58 hectares of Crown land. It is of historical significance as it is the site where the iconic TV series “Skippy the Bush Kangaroo” was set and filmed from 1967 – 1969. After filming finished, it opened as a tourism venue and conservation area. “Waratah Park was in continuous operation from 1970 until 2003.



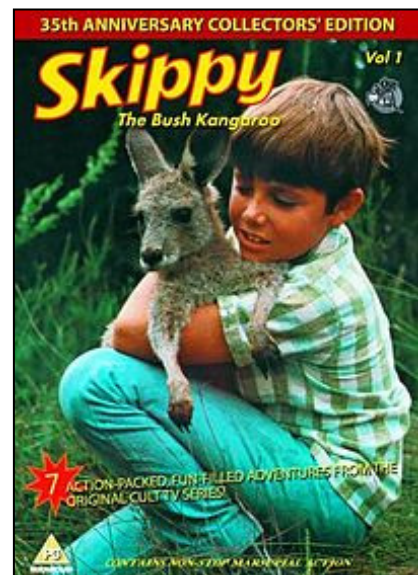
Rangers Headquarters 2006

A nomination for State heritage listing was made by Council in 2011. After full consideration of Council’s nomination, it was recommended that the site did meet the criteria for State heritage listing. However, in considering this recommendation at its meeting held on 4 April 2012, the Heritage Council of NSW resolved to defer any listing, given that there was an unresolved Aboriginal Land Claim over the site

In the interim, Council can proceed with listing of the site within its Local Environmental Plan. The site is clearly of local heritage significance, and likely to be of State heritage significance.



Rangers Headquarters 1968

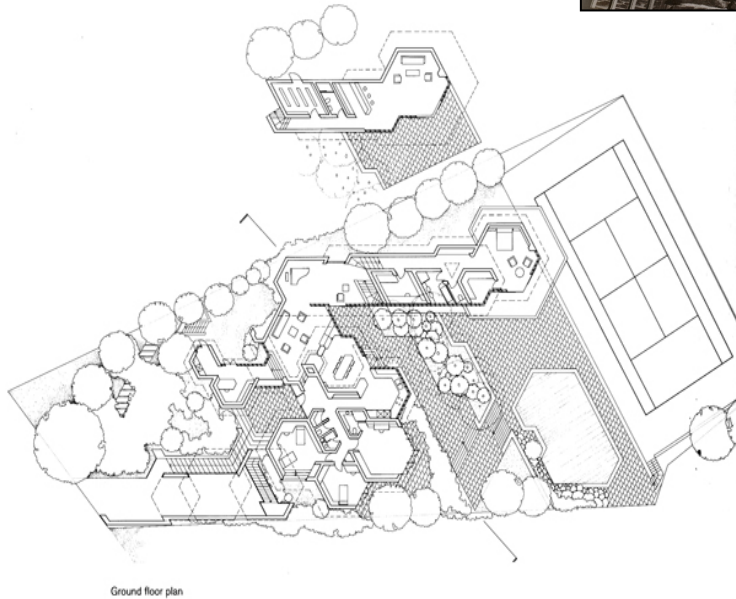


Former Chadwick House and Garden, 82 Arthur Street, Forestville

This house is significant as it was designed by the prominent Australian architect, Neville Gruzman, collaborating with a sympathetic client in Richard Chadwick. It was also included an important early native garden by the prominent landscape architect, Bruce Mackenzie.



Photo by Max Dupain c. 1964



Ground floor plan

Neville Gruzman image

It is a remarkable house, comprised of interlocking hexagonal forms and was constructed in timber and bush stone. The design of the house stepped down the site and engaged with the complex bush garden. The interiors with unfinished stone walls and clear finished joinery gave it a "cave-like" character. The house and garden have recently been added to the National Trust Register.



Photos by Max Dupain c. 1969

Soldiers Settlement Dwelling, 8 Duke Street, Forestville

This weatherboard dwelling was built around 1916 and is a remnant of the Soldier Settlement Scheme developed in 1915 (in NSW from 1916). It is a simple house with features of Federation period Vernacular architecture, of weatherboard construction and low-pitched gabled roof clad in corrugated iron.



It is historically significant due to its association with the Commonwealth/State cooperative scheme of re-settling soldiers demobilised following the end of their service in WW1. The house maintains continuity of residential use and displays a high degree of integrity when viewed from the street.

Presbyterian Church of St Columba, 685 Warringah Road, Forestville

This timber framed chapel/church on a stone base was built in the 1940's. It was purpose built as a place of public worship, to a design of Ken Buckle and constructed with voluntary contributions from its congregation. It was formerly known as the Brethren Chapel and is representative of small scale places of public worship from the 1940's.



The building is now used as the Presbyterian Church of St Columba and is associated with St Andrews Church at Beacon Hill.

Timber jetty remnants and marine bollards, within Manly Lagoon and adjacent bank

In the body of Manly Lagoon and on the adjoining banks, there are remnants of what clearly were timber structures, such as jetties or bridges. As there is remnant timber on both banks of the lagoon, and also in the middle of the water, it is likely that the structure linked the two sides.

On the Passmore Reserve side, there is a timber structure with two (2) marine bollards mounted on it.



History of these remnants has not yet been established; however it is likely that they were part of a previous recreational boating use of this part of Manly Lagoon, probably in the early decades of the 20th century.



WWI Obelisk, cliff behind North Curl Curl Beach

This small obelisk was erected in 1917, by persons unknown. It is engraved with the names of soldiers killed in WWI.

It is not known who erected the obelisk, however research by Mr Martin, the unofficial custodian of this monument has revealed that the 10 men listed on the obelisk were mates from Randwick who used to camp in the Curl Curl area before the war. It is thought that it was erected by fellow campers who knew them.

In 2010, the Council made a track in the bush, so that the obelisk could be accessible and also installed an information storyboard sign. It was inscribed as follows:-

"The Obelisk was placed on the clifftop in 1917.

On the granite tablets are listed Australian soldiers killed during W.W.1.

S. TOWNSEND, W. GOODE, A. BARNES – GALLIPOLI

D. ROBERTSON, B. JONES, S. LIDDLE, A. MCNAIR, G. GOODE,

L. LIDDLE, L. WALSH - FRANCE AND BELGIUM

They camped at North Curl Curl beach in the years prior to 1914

"LEST WE FORGET"

The inscriptions of the 10 soldiers names had been weathered from the original sandstone of the obelisk, so new plaques were attached to ensure that the names of those honoured were always remembered.



Laurie Short House, 307 McCarrs Creek Road, Terrey Hills

This house is significant as it is an important early work by eminent Australian architect, Glenn Murcutt. It was awarded the NSW RAIA Merit Award in 1975 and the NSW RAIA Wilkinson Award in 1976.

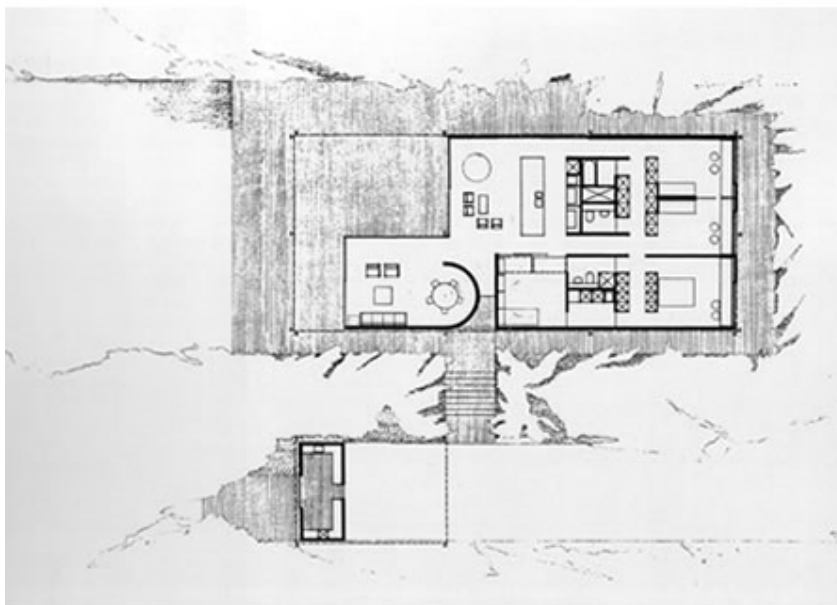


photos by Max Dupain

Photos by Max Dupain - 1974

It is a flat roofed steel framed pavilion of modest scale and rectangular overall form. It stands on an expressed brick terrace set into its bushland setting, with an outlook over the surrounding landscape. A smaller pavilion houses a carport and workshop.

It remains one of the finest Australian Modernist homes of the 20th century. It was built for Laurie Short, who was a prominent Australian union official and his wife Maree Short, and art critic and writer.



Plan – Glenn Murcutt

COLLARROY HE

AIN CAMP
AGENT
Sale



Proposed Expanded Existing Items



Item I11 – Fisherman's Hut, Long Reef

The proposal is to expand the existing listing of the Fisherman's Hut, to include a curtilage around the hut. In doing so, the listing can also include the remnant vegetation behind the Hut and also the remnant winches, some of which are still used.

The vegetation includes Themeda Grassland, which is an endangered ecological community under the Threatened Species Conservation Act 1995.



Remnant winches along foreshore



Embankment adjacent to Fisherman's Hut - Themeda Grassland [foreground] and Coastal Vine Thicket [right background] near Port Jackson Fig [centre background]



Brush Muttonwood (*Myrsine variabilis*)

Item I75 – Street Trees, Soldiers Ave, Freshwater

The proposal is to retain the current local heritage listing, but amend it so that it also covers any remaining plaques and memorials as well as some camphor laurel trees near the intersection of Oliver Street. The current listing only refers to the Brush Box trees and doesn't include the memorials.



'Heroes Tree' memorial and Brush Box (adj. to No. 24)



Close up of memorials



Anzac Day 1938 –
wreath-laying in
Soldiers Avenue
(Source: Warringah
Library)

Item I62 – Former Holland’s Orchard Trees, Warringah Road, Frenchs Forest

The proposal is to amend the listing to include the propagated pear trees, located on the grounds of Forest High School, which were propagated from the remaining heritage listed pear tree on Warringah Road.

The remnant pear tree, a lone survivor from the former Holland family orchard is currently heritage listed. This tree is a rare example of the local area’s cultural history of orchard growing activities during the early to mid-twentieth century and before post-war urban development.



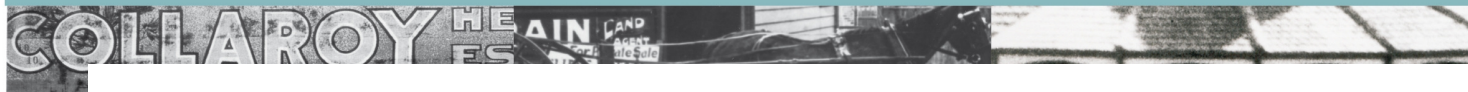
Former Holland’s Orchard – pear tree fruit detail

The commemorative grove (propagated from the remnant pear tree and planted in 2005) provides a tangible link with this local history. The grove of pears has local significance in terms of its social and cultural values, commemorating the former Holland family orchard (now the site of Forest High School) and celebrating one hundred years of International community service and local community partnerships.



New pear tree commemorative grove in mown grass (Forest High School)

Also, the existing heritage listing – “Holland’s Orchard (Former)” describes the item as consisting of “two apple trees approximately 4 metres in height”. This is not correct as there is only a single pear tree present, the other tree having died. The description of this heritage item will therefore also need to be amended.



Management of Heritage

Council's involvement in heritage should go beyond the identification of items and their statutory protection. Any heritage list needs to be supported by incentives, information and promotion. The community needs to understand why there are heritage items and why it is important to preserve Warringah's heritage for future generations.

Council's involvement in local heritage should include supporting its heritage listings as well as communicating and promoting heritage generally to the general community.

Supporting

There are a number of ways that Council can support the owners of listed heritage properties. This can involve financial help as well as general guidance and advice.

Warringah Council already provides heritage advice to owners, through specialist strategic planning staff and use of the heritage expertise on its Warringah Heritage Panel. This could be more widely advertised and owners could be provided with more information on what the heritage listing of their property actually means – what they can and can't do, where they can get help etc.

An area which should be investigated is the introduction of a Local Heritage Fund. This is the most commonly used heritage incentive, providing small \$ for \$ grants to owners of heritage items. Most Councils allocate \$10,000 per annum for their Local Heritage Fund, with a limit of \$1,000 for each grant. While not a lot of money, it is an incentive for owners of heritage items to maintain their properties.

Communicating and Promoting

Heritage is often misunderstood by the community. There are a number of things that Council can do to raise the community's awareness of Warringah's heritage, what it consists of and why it is important to look after it.

One vital way of communicating heritage information is via a well structured and informative page on Council's website, which can provide links to other heritage resources.

The other effective way to increase community awareness is to prepare and distribute heritage brochures. Brochure topics could include a general brochure on heritage in Warringah and a new brochure for owners of heritage items. There could also be opportunities for a series of specific brochures on certain architectural types or heritage types.

It could also involve heritage walks, supported by brochures and heritage plaques. Various types of plaques could be implemented to raise community awareness of the heritage significance of their surroundings.

A Heritage Incentives and Promotions Policy could be prepared in conjunction with the expertise on the Warringah Heritage Panel and the Heritage Community Committee, to establish a framework to assist with the future management of Warringah's heritage.

Heritage Street Tree Management

Street trees by their nature are located within Council road reserves. There are at least seven (7) streets where trees are already heritage listed and it is proposed to add a new listing for Anzac Ave/Hendy Ave, Collaroy and for the trees around Brookvale Park. There is currently no special management policy implemented by Council, which looks at how these trees should be managed on a day-to-day basis and also as part of a longer term strategy of progressive replacement planting etc.

Ongoing Review of Heritage Items

The identification of heritage is an on-going task. Over time, new information becomes available about existing heritage items and potential new items are discovered or brought to Council's attention.

To manage this, Council should have a process of continually reviewing its heritage, using the expertise available on its Warringah Heritage Panel. This work could then be fed into a heritage LEP amendment, when required. This would negate the need to undertake a more comprehensive review process while at the same time, updating Warringah's heritage. There could be a role also for the Heritage Community Committee in this on-going process.

COLLARROY HEAD

AINLAND
AGENTS
Safe Safe

Recommended Actions



Recommended Actions

The first stages of the Warringah Community Based Heritage Study Review are now complete. There are a number of specific recommendations arising from this Study, which require further action.

The main recommendations relate to making changes to the heritage list within Warringah Local Environmental Plan 2011. These statutory changes require the preparation of a heritage planning proposal, which will need to be prepared and submitted to the NSW Department of Planning and Infrastructure.

Main Recommendation

Amend Schedule 5 and the Heritage Map of WLEP 2011

A heritage planning proposal needs to be prepared and submitted to the Department of Planning and Infrastructure. This planning proposal will include:-

- Text changes to Schedule 5 of WLEP 2011, as outlined in Appendix A;
- Changes to WLEP 2011 Heritage Map, as described and highlighted in Appendix A;
- Removal of two (2) existing heritage items from Schedule 5 of WLEP 2011 and from the Heritage Map, they being:-

Item I13 – Long Reef Garage, 2 Hay Street, Collaroy
(Pt Lot 6, Section 6, DP 11358); and

Item I27 – Property known as “Ballagh”, 5 The Avenue, Collaroy
(Lot 24 DP 7001)

- Addition of fourteen (14) new heritage items into Schedule 5 of WLEP 2011, as outlined in Appendix I;
- Expansion of the scope of three (3) existing heritage items in WLEP 2011, as outlined in Appendix I;
- Addition of ten (10) new heritage items, already included in a section 170 State Government agency heritage list, as outlined in Appendix B;

Ancillary Recommendations

There are a number of other tasks which go hand-in-hand with the heritage planning proposal. These tasks ideally should be done while the planning proposal is being prepared, so that they are completed before gazettal of the new heritage provisions. These tasks are:-

- **Update all Heritage Inventory Sheets** – so that the information is consistent with LEP listings; Statements of Significance also should be reviewed and updated where necessary to ensure robustness;
- **Transfer of updated Heritage Inventory Database** to the Office of Environment and Heritage. This is necessary to ensure that the on-line Heritage Database provided on the NSW heritage website is up-to-date and reflects our current Local

Environmental Plan heritage listings. This should be done now, to update our current listings and then again, upon gazettal of the heritage LEP amendment;

- **Prepare an Historical Themes Review** which will update Warringah's existing Historical Context Report and provide more details on local heritage themes relevant to the history and development of Warringah. Once this Review has been completed, the local heritage themes in the Warringah Heritage Inventory database will also need to be updated.

Future Heritage Management Recommendations

These future management tasks are recommended, subject to available resources. They should be considered in future Community Strategic Plan and budget preparation.

- **Prepare a Warringah Heritage Incentives, Education and Promotions Policy** which will outline how Council will support owners of heritage items and how Council will promote and educate the general community about Warringah's heritage;
- **Prepare a Heritage Street Tree Management Policy** which will provide a program for Council to follow to protect the heritage trees and implement and manage replanting programmes;
- **Ongoing review of heritage items** to ensure that any new heritage items that are brought to Council's attention are investigated on an on-going basis and a regular (e.g. every 5 years) heritage amendment prepared to incorporate required changes into Council's Local Environmental Plan.



Appendices



Warringah Council

Appendix A

Proposed Changes to WLEP 2011 (Schedule 5 and Heritage Map)

Item No	Item name	Existing entry	Proposed change	Reason for change
I2	Brickworks	Property description is SP77600, but heritage map also includes Lot 12 DP 1101677 which is a Council reserve.	Amend the heritage map to remove land known as Lot 12 DP 1101677.	To correctly identify extent of property on heritage map.
I5	Bus Shelter	Under Suburb "Brookvale"	Put under suburb "Dee Why"	This is the bus shelter outside the former Wormald building and should be listed together with this building under Dee Why.
I6	Trees and plaque	Item name "Palm tree and Plaque"	Item name should read "Palm trees and Plaque"	Because there is more than one palm tree listed and item description should reflect this.
I10	Collaroy Rock Pool	Map change	Amend heritage map so that the delineated area is aligned with actual location of Collaroy rock pool.	To more accurately identify the location of the item.
I11	Fisherman's Hut, Long Reef	Property description is "Lot 1 DP 64163"	Property description should read "Lot 1 DP 64163, as shown on heritage map".	To correctly identify the location of the item.
I11	Fisherman's Hut,	Map change	Amend heritage map so that the delineated area is	To more accurately identify the

Item No	Item name	Existing entry	Proposed change	Reason for change
	Long Reef		aligned with actual fisherman's hut location.	location of the item.
I15	Jenkins Family Grave,	Property description reads Lot 2, DP 604580"	Property description should read Lot 2, DP 604580, as shown on the Heritage Map."	This is necessary as not the whole lot is identified on the Heritage Map.
I17	Trees and plaque	Property description reads "Lots 18-20, DP 9667"	Property description should read "Lots 18-20, DP 9667; Lot 7177 DP 93784; Lots 1-4 DP 68225; Lots 1 and 2 DP117527, as shown on Heritage Map"	To correctly reflect the legal descriptions affected by this listing.
I18	Trees	Item name read "Livingstonia australis palms"	Item name should read Washington Palms (<i>Washingtonia robusta</i>)	To correctly identify the tree species listed.
I20	Arlington Amusement Hall	Item name "Arlington Amusement Hall"	Item name should read "Former Arlington Amusement Hall"	To recognise that the building is no longer used for this purpose.
I21	House – 1071 Pittwater Road	Property Description, in part, reads "Lot 24, DP 13919"	Property description, in part, should read "Lot 24, Sec 31, DP 13919	To correct legal description.
I23	Westpac Bank	Item name reads "Westpac Bank"	Item name should read "Former Westpac Bank"	Because the building is no longer used as a Westpac Bank.

Item No	Item name	Existing entry	Proposed change	Reason for change
I24	Four Mature Norfolk Island Pine Trees	Property description reads "SP 72696"	Property description should read "SP 72696, as shown on the Heritage Map".	This is necessary as not the whole lot is identified on the Heritage Map.
I31	Building known as "Legacy Park"	Property description reads "As shown on Heritage Map"	Property description should read "Lot 2026 DP752038" This also requires a heritage map change as this item is not currently shown on the map.	To correctly identify property in schedule and on heritage map.
I30, I31, I32, and I33	ANZAC War Memorial Building known as "Legacy Park" Ruins of Wheeler Homestead, War Veterans Home James Wheeler Grave	Suburb reads "Collaroy"	Suburb should read "Wheeler Heights"	To ensure consistency with Council's GIS Database.
I32	Ruins of Wheeler Homestead, War Veterans Home	Address reads "Veterans Pde"	Address should read "Lot 1 Veterans Pde"	To correctly identify property.
I32	Ruins of Wheeler Homestead, War Veterans Home	Property description reads "As shown on Heritage Map"	Property description should read "Lot 1 DP 774980". This also requires a heritage map change as the	To correctly identify the property that contains the heritage item.

Item No	Item name	Existing entry	Proposed change	Reason for change
			map shows this lot and the adjoining lot, Lot 1 DP803645).	
I33	James Wheeler Grave	Address reads "Wheeler Place"	Address should read "1 James Wheeler Place"	To correctly reflect address on Council's GIS Database.
I33	James Wheeler Grave	Property description reads "Lot 28 DP 262862"	Property description should read "pt Lot 28 DP 262862"	To correctly reflect legal description.
I34	House known as "Sunrise"	Property description reads "Lot 13, DP 841943; Lot 1 DP 22523".	Property description should read "Lot 11 DP 841943". Changes to heritage map also required – as map also identifies Lots 12 & 13 DP 841943 which are now road reserve and owned by Council).	To reflect current legal description and to correctly identify the property that contains the heritage item.
I36	Port Jackson Fig Tree	Address reads "Between 15 and 17 Bennett St"	Address should read "17 Bennett St (overhanging 15 Bennett St)"	To correctly identify the trees location.
I38	Trees	Suburb reads "Dee Why"	Suburb should read "Cromer"	To ensure consistency with Council's GIS Database.
I52	Roche Building	Suburb reads "Dee Why"	Suburb should read "Cromer"	To ensure consistency with Council's GIS Database.
I53	Givaudan-Roure	Suburb reads "Dee Why"	Suburb should read	To ensure consistency with Council's

Item No	Item name	Existing entry	Proposed change	Reason for change
	Office		"Cromer"	GIS Database.
I54	Coronation Wishing Well	Address reads "The Strand, Dee Why Reserve"	Address should read "The Strand, Dee Why Beach Reserve"	To ensure consistency with Council's GIS Database.
I55	World War I Roll of Honour	Address reads "The Strand, Dee Why Reserve"	Address should read "The Strand, Dee Why Beach Reserve"	To ensure consistency with Council's GIS Database.
I59	House	Item name reads "House"	Item name should read "Dental Surgery"	To correctly identify current use.
I64	Harbord Uniting Church	Address reads "Corner Albert Street and Ocean View Road"	Address should read "65 Albert Street, cnr Oceanview Road"	To correctly identify the property.
I65	Duke Kahanamoku Statue and Memorial Park	Property description reads "As shown on map"	Property description should read "Lot 7108 DP 1074767, as shown on Heritage Map"	To correctly identify the property and the item's location.
I65	Duke Kahanamoku Statue and Memorial Park	Map change	Amend heritage map so that the delineated area is aligned with the location of the actual statue.	To more accurately identify the location of the item.
I66	Freshwater Surf Life Saving Club	Property description reads Lot 7140, DP 1032133"	Property description should read "Lot 7140, DP 1032133 and Lot 2797, DP 820312, as shown on the	To more accurately identify the location of the heritage item.

Item No	Item name	Existing entry	Proposed change	Reason for change
			Heritage Map."	
I66	Freshwater Surf Life Saving Club	Map change	Amend heritage map so that the delineated area is aligned with the actual location of Freshwater Surf Life Saving Club.	To more accurately identify the location of the item.
I67	Freshwater Rock Pool	Map change	Amend heritage map so that the delineated area is aligned with actual location of Freshwater rock pool.	To more accurately identify the location of the item.
I70	House known as "Felicita"	Property correctly identified in schedule as 46 Kooloora Ave, but LEP map shows 46, 48 and 48A Kooloora Ave	No change to LEP schedule 5 listing, however change required to LEP Heritage Map.	To ensure that only the correct property is identified. NOTE: Change to LEP map required to delete 48 and 48A Kooloora Ave from LEP map.
I77	Harbord Public School	Property description reads "Lots 469-471, 474, 486, 496, 498-500, DP 752038; Lots 1-4, DP 945486; Lots X and Y, DP 407018; Lot 1, DP 391679; Lots A & B, DP 409501"	Property description should read reads "Lots 469-471, 474, 486, 498-500, DP 752038; Lots 1-4, DP 945486; Lots X and Y, DP 407018; Lot 1, DP 391679; Lots A & B, DP 409501"	To more accurately identify school land, by deleting a redundant property description and adding lots which are part of the school.
I84	Manly Dam	Map change	Property description is correct in schedule, but only half of lot is mapped. Whole of Lot 10, DP 840821 should be included on Heritage Map.	To more accurately identify the location of the heritage item.

Item No	Item name	Existing entry	Proposed change	Reason for change
I91	Tree Group	Item name reads "Tree Group"	Item name should read "Group of Washington Palms (Washingtonia robusta)"	To more accurately identify the heritage item.
I96	House known as "Furlough House"	Item name reads "House known as "Furlough House"	Item name should read "Buildings known as "Furlough House""	To correctly identify current building type.
I97	Bus Shelter (former tram shelter)	Address reads "Pittwater Road"	Address should read "1417 Pittwater Road"	
I97	Bus Shelter (former tram shelter)	Property description reads "Road reserve, adjacent to No. 1417 Pittwater Rd, Narrabeen (Part Lot A, DP 445551)"	Property description should read "Part Lot A, DP 445551."	To correctly locate the heritage item. NOTE: This also requires a LEP map change
I108	Former "Windy Dropdown"	Item name reads "Former "Windy Dropdown"	Item name should read "House formally known as "Windy Dropdown"	To correctly identify the item.
I109	North Curl Curl Rock Pool	Map change	Amend heritage map so that the delineated area is aligned with actual location of North Curl Curl rock pool.	To more accurately identify the location of the item.
I110	Shop known as Prime Cleaning Supplier Pty Ltd	Item name reads "Shop Building known as Prime Cleaning Supplier Pty Ltd"	Item name should read "Industrial Building"	To correctly identify the building type and remove a redundant reference.
I114	Bus Shelter	Address reads "Pittwater Rd and	Address should read "Pittwater Rd, cnr Riverview	To more accurately identify the item.

Item No	Item name	Existing entry	Proposed change	Reason for change
		Riverview Pde"	Pde"	NOTE: This also requires a LEP map change.
I117	House	Address reads "26 Cavill Rd"	Address should read "26 Cavill St".	To correctly identify the item.
I119	Pandanas Art Gallery and Cafe	Item name reads "Pandanas Art Gallery and Café"	Item name should read "Café and adjoining dwelling"	To correctly identify the building type and remove a redundant reference.
I121	Property known as "San Marino"	Item name reads "Property known as "San Marino"	Item name should read "House known as "San Marino"	To ensure consistency with other listings.
I121	Property known as "San Marino"	Address reads "49 Greycliff Street"	Address should read "49 Greycliffe Street"	To correctly identify the street name.
I123	Queenscliff Rock Pool	Address reads "Queenscliff Headland"	Address should read "Queenscliff Beach"	To correctly identify the item.
I126	Freshwater View Reserve	Address reads "Pavilion St"	Address should read "21 – 29 Pavilion St"	To correctly describe location of item.
I126	Freshwater View Reserve	Property description reads "Lot 1, DP 130487; Lot 1, DP 947277; Lot 1 DP 946788"	Property description should read "Lot 1, DP 130487; Lot 1, DP 947277; Lot 1 DP 946788; Lots 21, 23 and 25, DP 262900"	To correctly identify the land covered by this item and as shown on the heritage map.
I127	House	Address reads 56 Queenscliff Road which is correct. LEP map however covers 54 Queenscliff	No change to LEP schedule 5 listing, however change required to LEP Heritage	To ensure that only the correct property is identified.

Item No	Item name	Existing entry	Proposed change	Reason for change
		Road but not 56 Queenscliff Road. Existing LEP listing is for 54 & 56 Queenscliff Road	Map.	NOTE: Change to LEP map required to delete 54 Queenscliff Road and add 56 Queenscliff Road
I128	Building known as "Stewart House"	Property description reads "Lot 1496, DP 752038"	Property description should read "Part Lot 1496, DP 752038"	To correct legal description.
I129	South Curl Curl Rock Pool	Property description currently reads "Lot 7109 DP 1074766".	Property description should read "Lot 7356, DP 1167221, as shown on the Heritage Map".	To ensure that the heritage item is correctly located and identified.
C6	Stony Range Flora Reserve	Property description reads "Lot 369, DP 752038; Portion 7146, DP 1069201; Lot 368, DP 752038; Lot 7, DP 523299."	Property description should read "Lot 369, DP 752038; Lot 368, DP 752038; Lot 7, DP 523299."	To correctly reflect current legal description (Por 7146 DP 1069201 no longer exists).
A1	Former Collaroy Hospital site – Development Disability Services Building and the Beach House	Address reads "Beach Road (corner Brissenden Avenue)"	Address should read "1 Brissenden Avenue (corner Beach Road)"	To more accurately reflect the address of the property.
A2	Never Beaten Lime and Cement Works Ruin, Reserve	Item name reads "Never Beaten Lime and Cement Works Reserve"	Item name should read "Ruins of Never Been Beaten Lime and Cement Works"	To more accurately describe the item.
A2	Never Beaten Lime	Property description reads "Lot 2,	Property description should	To correctly identify the land covered

Item No	Item name	Existing entry	Proposed change	Reason for change
	and Cement Works Ruin, Reserve	DP 1031932"	read "Lots 1 and 2, DP 1031932; Lot 5, DP 749899, as shown on the Heritage Map."	by this item and as shown on the heritage map.

Note: Map changes highlighted in yellow.

Appendix B

Properties in existing State Government s.170 Heritage Registers

Suburb	Item Name	Address	Property Description	Owner
Beacon Hill	Warringah Reservoir (WS 0131) and attached Valve House	40 – 50 Government Road	Lot 1 DP 635480	Sydney Water Corporation
Manly Vale	Manly Creek Bridge	Condamine Street	N/A	RMS
Manly Vale *NOTE	Manly Dam Wall	Across Manly Creek, near King Street	Lot 10 DP 840821	Sydney Water Corporation
Manly Vale	Manly Hydraulics Laboratory	110b King Street	Lot 11 DP 840821	Minister for Public Works
Narrabeen	Narrabeen Lake Bridge (RTA Bridge No. 56)	Pittwater Road	N/A	RMS
Narrabeen	Bridge No. 3 over Middle Creek	Wakehurst Parkway	N/A	RMS
North Balgowlah	Bantry Bay Reservoir (WS 0008)	Lot 1 Kirkwood Street	Lot 1 DP 835123	Sydney Water Corporation
North Balgowlah	Bantry Bay Water Pumping Station (WPS 122)	Lot 1 Kirkwood Street	Lot 1 DP 835123	Sydney Water Corporation
Oxford Falls	Middle Creek Bridge No. 1	Wakehurst Parkway	N/A	RMS
Oxford Falls	Middle Creek Bridge No. 2	Wakehurst Parkway	N/A	RMS

***NOTE:** This is already listed in LEP as Item I84 – however it is not mapped correctly and there is some additional information which could be added to the Inventory Sheet

Appendix C

Draft Heritage Themes Review

Review of Warringah Historical Themes

Review of Warringah Historical Themes

Dr Sue Rosen

February 2011

Section A: Introduction

The context for this review of the Warringah historical themes is the Warringah Community Based Heritage Study that is currently being prepared. Since the preparation of the Warringah Heritage Study in 1994 considerable work has been undertaken by the NSW Heritage Branch and its predecessor, the NSW Heritage Office, in preparing guidelines for heritage assessment, particularly by the History Advisory Panel to the Heritage Council which has specifically addressed the two historic criteria, namely criteria a) historical significance and criteria b) historical association significance. For a place to be considered to have heritage significance under these criteria it must be capable of demonstrating the historical themes associated with the item. It can also be argued that the historic themes are relevant to the other heritage criteria as nothing happens in an historical void.

In preparing the historic context report in 1994 Judy Wing has prepared a very competent and comprehensive document for its time, given that so little had been written at a local level, and that Wing would have been reliant on secondary sources, such as papers produced by local historians to develop much of the history. It could be updated, however, with a more explicit articulation of themes throughout the narrative. This is a refinement of the process that has emerged since Wing undertook the work in the early 1990s. Since that time there has been an evolutionary process of development as to how best to address the historic themes and prepare the historic context component of heritage studies. For a while there was a trend to write short paragraphs under the heading of each of the themes, but this method has now been discarded as it resulted in very poor readability, repetition and a lack of cohesion. That format often meant that the chronology and the interactions of themes was lost in an unwieldily narrative that was utterly unhelpful in understanding the development of a place and the forces that shaped it. No event or place is linked to one single theme or is set in aspic. Guidelines produced by the Heritage Office for Criteria A in 2006 stress the need for a sense of change over time.

When Wing undertook the work the NSW theme's were in a draft format and have since been changed. Wing's work could also be updated with an expansion of themes as trends, for example, the native garden trend of the 1970s, which with the passage of time are recognized as a significant feature of the area's history and the development of the area's cultural landscape. A number of potential themes that might prove to be important are listed as part of this report in section C that could be researched and developed as part of the Community Based Heritage Study and integrated into Wing's report.

Sue Rosen & Associates, Heritage Assessment And History (HAAH)
1

Review of Warringah Historical Themes

In Section B of this report the ways that the historic themes articulated by Wing might be developed are canvassed. In Section C possible new themes that might be examined in the Current Community Based Heritage Study are suggested.

The brief specifically precluded additional research or a written revision of the earlier contextual history. Therefore this report consist largely of suggestions of themes and development of the earlier report that might be undertaken as part of the Community Heritage Study.

I have also attached for Council's information a copy of the historic context report I prepared as part of the Uralla Heritage Study, this was developed drawing on input from the community. The many gaps and queries [bolded in the text] are directed to the community and it is expected they will be filled as research is conducted in phase 2 as individual sites are nominated for heritage listing. As historian, my role was to liase, provide training and support, edit, and eventually form a narrative structure, for the community to flesh out further. Funding of \$25,000 plus GST, and support in kind, including a car, office space and photocopying facilities and the hosting of community meetings was provided by Uralla Council.

While this review of themes might be helpful in pointing the way ahead for the community heritage study, it can really only be the beginning of a sustained research effort. The brief also required that the history be updated to the present. After looking at the material available at the library and the time frame allowed, I have not attempted to do so.

I would like to thank Tina Graham at the library and Jim Boyle of the historical society for their assistance and contribution.

Section B

With the brief stipulating that this review was not to involve a rewrite of Wing's history, please refer to marked up PDF – Attachment B for application of the comments below.

1 Introduction

This is a very coherent and elegantly written introductory over view of the historical development of the area which Wing has not developed post 1970.

1A I suggest that after research has been undertaken which explores themes that have emerged post 1970 that this section is extended in a balanced way, proportionally consistent with the preceding paragraphs encompassing the earlier history.

Dependent on the results of the community based research, it may also be necessary to add the odd phrase in preceding paragraphs.

1B I suggest that the names of the themes be changed to reflect those officially listed by the NSW Heritage Branch and that some additions are made. And

Review of Warringah Historical Themes

some explanation and local exemplars be provided. The list of themes should read:

Environment - naturally evolved, this theme refers to natural features that are significant regardless of human activity, for example Dee Why and Curl Curl lagoons, Narrabeen Lake and Long Reef Aquatic Reserve. This theme also covers naturally occurring features in the local environment which have shaped and influenced human life and cultures. Local examples of this might include areas of bushland, the beaches and bays that have influenced the life style of the area in both the bush and the beach, walking trails, surfing and swimming spots that are particularly important to the community.

Aboriginal cultures and interactions with other cultures - this theme refers to places associated with maintaining, developing experiencing and remembering Aboriginal cultural identities and practises and interactions demonstrating race relations. Local examples of this theme include rock art and may include places where early contact was made between the local people and Europeans, particularly if descriptions of that contact have survived.

Exploration- this theme is associated with making places previously unknown to a cultural group, known to them. A local example might be the routes taken by the Europeans when they first made their way from Many Cove to Pittwater. This event and places associated with it would also be contiguous with then themes of Aboriginal Cultures and interactions, environment - naturally evolved, Environment - Cultural landscape as associated with the impact of Aboriginal land management practises and Transport - relative to Aboriginal pathways utilized by the Europeans.

Transport - this theme is associated with the movement of people and goods and systems for the provisions of such movement. Local examples may include early tracks and routes, wharfage.

Communication - this theme is related to activities associated with the creation and conveyance of information.

Towns suburbs and villages - this theme refers activities associated with creating, planning and managing urban functions, landscapes and lifestyles in town, suburbs and villages. Locally, residential subdivisions, civic buildings and infrastructure such as water supply facilities are evidence of this theme. The development of retail malls and their impact on the area is important in relation to the shape and orientation of development in the area. The theme is also closely related to the theme of Utilities, Land Tenure, Government and Administration, and Commerce.

Transport - this theme is associated with the movement of people and goods and systems for the provisions of such movement. Local examples may include early tracks and routes, wharfage.

Review of Warringah Historical Themes

Environment – cultural landscape refers to activities associated with interactions between humans and human societies and the shaping of their physical surroundings. Local examples might include Garigal National Park, streetscapes, headlands, parks and reserves, beaches and golf courses.

Leisure – this theme is associated with recreation and relaxation. Local exemplars might include surf clubs, horse riding facilities, bush walking tracks and parks and gardens. The theme is closely related to the theme of Sport.

Migration – this theme relates to activities and processes associated with the resettling of people from one place to another and the impacts of such movements. This theme is closely related to the theme of Ethnic Traditions.

The above themes are roughly aligned with those identified by Wing. The following themes should be added:

Utilities – This themes deals with activities associated with the provision of services on a communal basis. Local example may be related to the supply of water, electricity, and telecommunications, such as the old Many Water Supply Reservoir which would also be linked with the theme of Environment – naturally evolved and cultural landscape.

Land Tenure – this theme refers to activities and processes for identifying forms of land ownership and occupancy. Local exemplars may include the pattern of subdivision of areas, Aboriginal rock engravings, or cairns.

Ethnic Traditions – this theme relates to activities associated with common cultural traditions and peoples of shared descent, and with exchanges between such traditions and peoples. This theme is closely related to the theme of Migration and Religion.

Government and Administration – this theme is associated with the governance of an area and the administration of public programs. Local examples might include civic buildings, court houses, and health facilities. It is closely associated with the themes of Health, Law and Order, Welfare and Education.

Commerce – this theme relates to buying, selling and exchanging goods and services. Local examples might include the shopping strips, malls and arcades.

Fishing – this theme is concerned with activities associated with gathering, producing, distributing and consuming resources from aquatic environments.

Health – this theme is associated with the provision of medical assistance and or promoting and maintaining health. This theme is closely related to the themes of Welfare and Birth and Death

Review of Warringah Historical Themes

Welfare – this theme is associated with activities and processes associated with the provision of social services. Local examples might include the provision of homes for former defence personnel and aged care facilities. It is closely associated with the themes of Health and Religion. The extensive facilities of the Salvation Army in the area come under this theme.

Religion – this theme is associated with particular systems of faith and worship. Local example could include churches, schools and religious training institutions as well as Aboriginal sacred sites and places of burial, education, housing and welfare.

Sport – this theme refers to activities associated with organized recreational and health promotional activities. Surfing and surf clubs are likely to be particularly important themes associated with both people and places. Other local examples might include bowling clubs, swimming pools, ovals and tennis courts. The theme has links with the theme of welfare and health.

Accommodation – this theme encompasses activities associated with the provision of accommodation, including various accommodation types, such as hostels and aged care and disabled facilities. This theme is often linked with education, health and welfare.

Education – this theme is associated with teaching and learning, both formally and informally. Local examples might include the rock platform at Long Reef, the facilities of the Cerebral Palsy association and of The House With No Steps, as well as state, private and religious schools and colleges.

Creative Endeavour - this theme refers to activities associated with the production of and performance of literary, artistic, architectural and other imaginative and interpretative or inventive works. Local examples might include architecture, gardens, or alternative schools, as well as places and the work associated with local artists writers, actors and film makers.

Mining – this theme is associated with the identification, extraction, processing and distribution of mineral ores, precious stones and other inorganic substances.

Science – this theme is associated with systematic observations, experiments and the process for explanation of observable phenomena. This theme is evidenced locally at the Long Reef rock platform and is also related to Commerce and Technology with local examples potentially to be found in the technology centres and corporate facilities, where high-tech research has been undertaken.

Technology – this theme is associated with activities and processes associated with knowledge and use of mechanical arts and applied sciences. Local examples may be found in the commercial sector.

Domestic Life - this theme relates to activities associated with creating, maintaining, living in and working around houses and institutions. Local

Review of Warringah Historical Themes

examples of this may include the layout and interior design of houses from particular periods, such as 'The Gables' at Collaroy.

Birth and Death – this theme is associated with activities around the early stages of life, and of the bearing of children and with the final stages of life. The theme has links with Religion, Health, Education, Science and Technology. Local examples might be a Baby Health Centre or private hospital or invitro-fertilisation centre or a cemetery.

Social Institutions – this theme refers to activities and arrangements for the provision of social activities. A local example might include a YMCA, historical society meeting place, or RSL club.

Agriculture – this theme relates to the cultivation and rearing of crops and livestock. Locally, evidence of poultry farming, nurseries and market gardens may fall under this theme.

Forestry – this theme refers to activities related to the commercial exploitation of timbered areas.

Persons – this theme relates to the activities and associations of identifiable individuals, families and communal groups. A local example might be bush gardens designed by Betty Maloney. This theme can be linked with numerous other themes depending on the activities of the person/people. Documents and artefacts associated with the person, ie. moveable heritage items can be particularly relevant to this theme.

Law and Order – this theme is associated with maintaining, promoting and implementing criminal and civil law. Local examples may include police stations, court houses or a protest site.

Defence – this theme is associated with activities linked with the hostile takeover and occupation of a place. Houses occupied by the military during WWII are local exemplars of this theme.

Events – this theme refers to activities and processes that mark the consequences of natural and cultural occurrences. Local examples may include memorials, memorial walks or gardens.

There are few themes which are notable for their absence, with pastoralism and convicts being stand out absentees. The theme of Labour may also be thin on the ground and while mining is not totally absent, it is not a strong theme.

These themes are largely written about in terms of places or sites but moveable heritage items can be associated with all the above themes and need to be documented and considered as part of any community heritage study.

Review of Warringah Historical Themes

2 1788-1830 Aborigines and Exploration

I suggest that reference to the themes be explicitly made within the text and that examples of heritage sites also be used to illustrate the history. These specific example can be added into the text as the community study progresses and items are identified.

2A The historic themes associated with this period are Exploration, Environment- naturally evolved, Aboriginal cultures and interactions with other cultures, and Environment – cultural landscape. The evidence for the identification of places linked with themes and for their interpretation to the public is to be found in the first hand accounts of the area in this initial phase of European exploration and incursion into the area.

2B Are there any known examples of ancient trees that may have survived, that could be used as an example? If so a reference to them could be made here.

2C Is there an example of a path, route or road that has been identified as following an Aboriginal pathway or the route of the exploratory parties? If, so, it should be provided as an example here.

2D These rock carvings are related to the historic theme of Creative Endeavour and Land Tenure as a reflection of the ownership of the country by the local Aboriginal people who created them.

2E Do any present day roads follow the routes identified by Campbell? If so a reference to them could be made here.

2F These activities and the documentation associated with them are linked to the historic theme of Science, Exploration, Commerce and Agriculture. These surveys were part of an evaluation of the country for European occupation and exploitation.

3 1810-1900 Surveys and Settlement

3A The historic themes associated with this period are Environment – cultural landscape, as the impact of occupation began to have an impact. Other themes include Land Tenure as the country was subdivided, and Transport as tracks and roads were developed and wharves constructed.

3B Communication emerges more strongly as a theme in this period with the establishment of a postal service to Bayview

3C Thus Accommodation emerged more strongly as an historic theme along with Domestic Life.

Review of Warringah Historical Themes

3D Forestry, allied with Commerce was another theme that ran parallel to the themes of Land Tenure, and Agriculture across the century.

3E Education and religion first emerge as thematic elements in the 1870s.

3F Evidence of these activities are related to the themes of Agriculture, Industry and Commerce.

3G The theme of Utilities first appears towards the end of the period when

4 1900 – 1930 Speculation, Subdivision and Transport

4A Land Tenure; Towns, Suburbs and Villages; Creative Endeavour; Accommodation; Commerce; Religion; Law & Order; Utilities and Leisure are all themes associated with the intensification of settlement and subdivision that occurs in this period. They run alongside the theme of Agriculture, which begins to decline, particularly toward the end of the period, as residential development increases, nevertheless orchards and poultry farms and market gardens were widespread across Warringah.

4B The themes of Transport and Communication in Warringah are essentially the story of isolation and impediments to development.

4C The themes of Leisure and Sport also emerge in this period.

4D The theme of Government and Administration emerged early in the new century.

4F Linked with Government and Administration is the theme of Utilities, the need for which grew as the area suburbanised.

4G As utilities were enhanced, so too did Transport develop as a theme, with a substantial investment in the 1920s in roads and bridges, but not rail or tram lines.

5 1930-1945 Depression and WWII

5A The economic down turn of the 1930s saw the continuation of Agriculture as a theme in the local history of the area. Associated with this is the themes of Migration and Ethnic Influences.

5B Social Institutions as a theme also developed associated with community efforts to provide relief during the depression and also in response to WWII and its predecessor WWI.

5C Leisure and Sport as historic themes continue in this period.

Review of Warringah Historical Themes

5D For the first time Defence emerges as a strong theme.

6 1945 – 1991 Urban Warringah

6A The theme of Towns, suburbs and villages comes to dominate in this period and that of Agriculture declines, while those of Commerce and Technology rise.

6B Creative Endeavour as expressed in the area's architecture becomes an important theme.

6C Government and Administration as a theme strengthen in this period with residents becoming involved in protests over the nature of the development of the area.

6D Transport remained a prominent theme in this period.

Section C

Themes not expanded on Wing's study include Religion, Education, Birth and Death; Domestic Life; Sport; Fishing, Mining and Persons. Transport and the bus and tramway system could also be developed further.

Evidence of some themes may only be available through documents, with no fabric remaining, nevertheless the should be identified as the places where events and activities took place, for example the fishing community at Fisherman's Beach.

In discussions with Tina Graham, Warringah's local studies Librarian and Jim Boyle of the historical society the following aspects of the recent history of the area were identified as worthy of further investigation:

- The development in the 1960s and 1970s of bush gardens and the influence of Betty Maloney and Jean Walker in this movement. This is likely to come under the historic themes of Domestic Life; Creative Endeavour; Persons; Environmental – cultural landscape.
- Architectural innovation – commercial and residential. Illustrating the themes of Creative Endeavour and Accommodation. For example *Windy Dropdown I at North*
- Environmental issues, such as beach erosion, pollution, impact on beaches and lagoons, Construction of sand dunes, activist groups and issues. Illustrating the theme of Social Institutions and Government and Administration; and Persons.
- Alternative school movement reflecting the theme of Education. Steiner school, Kinmar, the German School.

Review of Warringah Historical Themes

- The themes of Welfare; Education, Health, Religion and , Birth and Death as reflected in places like the Salvation Army Youth Camp and the Elizabeth Jenkins Hostel and Nursing Home or the Narrabeen National Fitness Camp.
- More recent beach and leisure culture and rural culture reflecting the theme of leisure, including bushwalking and bush tracks.
- Surfing and surf board manufacturers.
- Retail development
- Bush living reflecting the themes of Creative Endeavour.
- Popular culture – for example the Skippy location, Waratah Park, Glen Street Theatre, the set of Whiplash filmed at French's Forrest in the early 1960s and others – all reflecting Creative Endeavour.
- Persons and Creative Endeavour – artists and writers, their creative output and the places associated with them, for example those featured in *Warringah 1988*.

Appendix D**Consultation Summary**

TASK	DETAILS
Councillor Briefing	15 September 2009.
Presentation to Heritage Community Committee	2 December 2010.
Call for Nominations	From Saturday 9 April until Friday 27 May 2011
Advertisements in Manly Daily	Display advert on Saturday 9 April 2011 and "Warringah Update" reminders on 23 April and 7 May.
Press Release to Manly Daily	Prepared and sent to Manly Daily.
Web site Information	New web page created– live from Friday 8 April 2011. Links to brochure, data form, list of existing items and heritage search.
Brochure & Posters	Brochure prepared and distributed on Monday 11 April 2011, to all libraries and civic centre. A4 poster displayed with brochures.
Letter to Manly Warringah & Pittwater Historical Society	Letter sent on Monday 11 April 2011 with 20 brochures. Also requested nomination of members for workshops.
Letters to all owners of existing heritage items	Letters sent on Monday 11 April 2011. Included a copy of NSW Heritage Brochure on and Heritage Review Brochure.
Memo to all Councillors	Sent out Friday 8 April 2011. Brochures distributed to Councillors on Monday 11 April 2011.
Information on TV screens in foyer	Information placed on TV screens in Library and Civic Centre.
Memo to Heritage Community Committee	E-mail to members of Heritage Community Committee. Copy of brochure sent.
Memo to Directors/Managers of Council land	Advised of Heritage Review and listed Council owned existing heritage items.
Memo to Development Assessment Staff	To advise them of call for nominations and request that they also make nominations of potential items.
Community Engagement List	E-mail alert to be sent to all on the Community Engagement List
Facebook and Twitter	Heritage Review was put on Council Facebook & Twitter pages
Briefing to Heritage Community Committee	16 May 2011.
Presentation to meeting of Manly Warringah & Pittwater Historical Society	4 June 2011.
Presentation to Heritage Community Committee	6 June 2011 – Presentation and discussion of the nominations received.

TASK	DETAILS
Letter to owners of nominated properties	Letter sent 4 November 2011, attaching explanatory notes.
Progress Report to NSW Heritage	1 March 2012 – required as a condition of the grant.
Memo to Councillors	19 March 2012 - Update on Heritage Review.
Councillor Briefing	20 March 2012 – Update on Heritage Review
Letters/Emails sent to all nominators	10 April 2012 – Advising of outcome of preliminary assessments. Copy of Summary of Nominations provided to all.
Letters sent to all owners of nominated properties	12 April 2012 – Advising of outcome of preliminary assessments. Copy of Summary of Nominations provided to all. 48 owners received a NO letter; 51 owners received a YES letter
Individual letters sent to owners if reassessment changed recommendation	18 July 2012 – 22 owners - Virginia Pl/Altona Ave, Frenchs Forest 14 August 2012 – 1-3 Coastview Place, Freshwater 16 August 2012 – 6 owners – Grace Ave, Frenchs Forest 20 August 2012 – 5 Primrose Ave, Frenchs Forest 20 August 2012 – 52 Forest Way, Frenchs Forest
Project Briefing Note	24 September 2012 – Information for new Councillors
Memo to Council Property Managers	13 December 2012 – Advising of proposed listings affecting Council owned/managed property.

Appendix E

Nomination Brochure and Advertisement.

We need your help...

If you know of something of potential heritage significance to Warringah, then let us know by nominating it. Complete a Heritage Data form available online at warringah.nsw.gov.au or Council – Civic Centre, 725 Pittwater Road, Dee Why.

The more historical information you can provide, the easier it will be for Council to consider your nomination.

Nominations will be received until Friday 13 May 2011.

What will happen next?

All nominations received will be assessed to ensure they meet the established criteria for heritage listing. Council will use the various heritage experts on its Warringah Heritage Panel to assist in the assessment of these nominated items.

Any recommendations for heritage listing will then be exhibited for public comment and considered by Council before the formal listing process is commenced.

Nomination deadline

Friday 13 May 2011

Further information

warringah.nsw.gov.au

Nomination form

To nominate an item you will need to complete a Heritage Data form available online at warringah.nsw.gov.au

Copies are also available from Council – Civic Centre, 725 Pittwater Road, Dee Why.

Questions

Contact Janine Formica on 9942 2662 (Monday, Wednesday & Thursday) or by email formij@warringah.nsw.gov.au.

* Historical photographs courtesy of Warringah Library Service




Warringah

Community Based Heritage Study Review



CALL FOR NOMINATIONS

April 2011



warringah.nsw.gov.au

What does this study involve?

The purpose of this study is to review Council's existing list of European heritage items and to identify other items which should be on the heritage list.

It is a community based study and Council is asking for help from the community to identify any important items of Warringah's heritage which have not yet been recognised.

A large part of the success of the study will be the response from the Warringah community.

Why is it community based?

Often heritage items are hidden from public view. In some cases a place might be of historical significance due to its association with events or persons.

The traditional system of identifying heritage items relies a lot on it being visible to the public. As such, not all important items of heritage are identified by this method.

The local community is the best source of information on the history of an area as they have lived through the development and growth of its area and hold a wealth of collective knowledge.

Council needs the community's help to uncover and discover those hidden items of heritage which deserve identification and protection, so that they will be retained for future generations.



What is a heritage item?

Heritage items are those things identified as having heritage significance for a community. They are things which have survived from an earlier time which can illustrate how an area has grown and developed.

A heritage item can take many forms and can be a building, place, tree, garden, plaque, reserve etc.

Not everything old can qualify as a heritage item.

There are established criteria which are used to determine whether an item is of heritage significance. However, an item can be significant for a number of reasons, including historical or historical associations or it may have aesthetic, social or technical significance.

What is already listed?

Council has a responsibility to identify and protect items of heritage within its local government area.

Heritage items are listed within Council's zoning document, Warringah Local Environmental Plan 2000. Every item has a corresponding Inventory Sheet which provides more detailed information on what is listed and why it is significant.

Currently there are approximately 145 items and areas of heritage significance listed in Warringah. These include a wide variety of items including private dwellings, commercial buildings, ocean rock pools, coastal cliffs, bus shelters, memorials, street trees and parks.

You can check the current list of heritage items online at warringah.nsw.gov.au





Warringah

Community Based Heritage Study Review

Do you know of a place or thing which could be of heritage significance for Warringah?

Warringah Council is reviewing its existing list of heritage items and is interested in hearing about potential new items of heritage significance which are currently not listed.

Heritage items are places and things which have survived from an earlier time and which illustrate how an area has grown and developed. Existing heritage listings include private houses, commercial buildings, memorials, street trees, ocean rock pools, coastal cliffs and parks.

Council is asking the community for nominations of potential heritage items for future heritage listing. The community of Warringah is the best source of information on the history of the Warringah area. Many people have lived through this history and hold a wealth of collective knowledge.

If you would like to nominate a potential item of heritage, please complete a Heritage Data Form which is available on Council's website or available on request.

Nominations close on Friday 13 May 2011.

If you have any questions, please contact Janine Formica on 9942 2662 (Monday, Wednesday and Thursday) or by email formij@warringah.nsw.gov.au.

For more information go to warringah.nsw.gov.au

* Historical photographs courtesy of Warringah Library Service



warringah.nsw.gov.au

Appendix F

List of Nominations Received (in no specific order)

No	Type	Nomination	Notes
1	Built and Area	Waratah Park & Rangers Headquarters Lot 445 DP824043 13 Namba Road DUFFYS FOREST	Heritage Council recommended this site for that State listing, but deferred listing until Aboriginal land claim is determined for the site.
2	Built	House Lot 200 DP 1005008 1035 Pittwater Road COLLAROY	Previously identified in Warringah Heritage Study in 1994
3	Built	"The Black House" Lot 1 DP 733613 44 Cowan Drive COTTAGE POINT	Waterfront cottage at Cottage Point
4	Landscape	Soldiers Ave Trees Soldiers Ave FRESHWATER	Street trees already listed. This nomination requests that a nomination be made for State listing.
5	Relic	Bollards and Jetty Piers Passmore Reserve MANLY VALE	Wooden remnants in creek
6	Built	Akuna Bay Marina 9996 McCarrs Creek Road TERREY HILLS	Ownership unclear
7	Built and Landscape	Warringah Council Civic Centre & Landscaping, Lot 100 DP 1041823 Pittwater Road DEE WHY	Dee Why Library already listed. Proposal to add Civic Centre and Landscaping between the two buildings
8	Built	Laurie Short House Lot 142 DP 752017 307 McCarrs Creek Road TERREY HILLS	
9	Built	Douglas L. Murcutt House Lot 23 DP 224801 22 Yarrabin Street BELROSE	
10	Built and Area	Forest Heights Estate Nos. 2, 3, 4, 5, 6, 7, 8, 9, 10, 11, 12, 13, 14, 15A, 15B and 16 Virginia	Proposed heritage conservation area

No	Type	Nomination	Notes
		Place and Nos.34, 36, 38, 40, 42, 44 Altona Ave FORESTVILLE	
11	Built and Landscape	Former Chadwick House and Garden Lot 24 DP 605792 82 Arthur Street FORESTVILLE	
12	Built	"The Cactus" 24 Currong Circuit (aka 10 Cooyong Road) TERREY HILLS	
13	Landscape	Former Hollands Orchard Warringah Road FRENCHS FOREST	Former Hollands Orchard already listed. Nomination is for expansion of this item to include propagated fruit trees in grounds of Forest High.
14	Built	Former Hews Home 5 Primrose Ave (cnr Hilmer St) FRENCHS FOREST	
15	Relic	Headstone of James Harris French Assembly Hall - Forest High FRENCHS FOREST	This is a movable relic.
16	Built	Weatherboard dwelling 17 Blackbutts Road FRENCHS FOREST	
17	Built and Group	Dwelling Group Nos. 81, 83 & 83A Prince Charles Rd FRENCHS FOREST	
18	Built	Dwelling 52 Forest Way FRENCHS FOREST	
19	Built and Group	Group of 5 Houses Nos. 38, 40, 42, 44 and 46 Grace Avenue FRENCHS FOREST	
20	Built and Group	Group of 7 Houses Nos. 21-23, 25, 27, 29, 31, 33 and 41 Grace Avenue FRENCHS FOREST	
21	Built	Soldiers Settlement Dwelling 8 Duke Street (cnr Ryrie Ave) FORESTVILLE	

No	Type	Nomination	Notes
22	Built	Soldiers Settlement Dwelling 17 Starkey Street FORESTVILLE	
23	Built	Former Henry Goggins Home 26 Maxwell Parade FORESTVILLE	
24	Built	House - "Firle" 32 Suffolk Avenue COLLARROY	
25	Built	Church Building (and former Army Barracks) Churches of Christ 1 Weardon Road BELROSE	
26	Built	"Lockwood" home 3 Clwydon Close BELROSE	
27	Landscape	Oak Tree 44 Pringle Ave BELROSE	
28	Landscape	Streetscape (landscaping, median strip & Council reserve) 169-181 Forest Way BELROSE	
29	Built	Retail Shops 10 – 28 Lawrence Street FRESHWATER	
30	Relic	Wrought Iron Door 10 Fisher Road DEE WHY	
31	Built and Area	Harbord Diggers Club Site and McKillop Park Freshwater Headland FRESHWATER	
32	Built and Area	Harbord Diggers Club Site and McKillop Park, Freshwater Headland FRESHWATER	Nomination also requests State Heritage Listing
33	Built	House 1A Mactier Street COLLARROY	
34	Built	House 1225 Pittwater Road	

No	Type	Nomination	Notes
		COLLARROY	
35	Built	House 160 Fuller Street NARRABEEN	
36	Built	House 132 Rose Avenue COLLARROY	
37	Built	House 971 Pittwater Road COLLARROY	
38	Built	House 49 Anzac Avenue COLLARROY	
39	Built	House 51 Anzac Avenue COLLARROY	
40	Built	House 29 Hendy Avenue COLLARROY	
41	Built	House 68 Anzac Avenue COLLARROY	
42	Built	House "Sunnybank" 13 Worcester Street (cnr Ocean Grove) COLLARROY	
43	Built	House 12 Worcester Street COLLARROY	
44	Built and Group	Houses Nos. 6, 16, 18, 19, 20 Beach Road COLLARROY	Nos.16 and 18 are already heritage listed
45	Built	House 8 Ocean Grove COLLARROY	
46	Built	House "Beach Cottage" 16 Seaview Road COLLARROY	
47	Built	House 8 Seaview Pde COLLARROY	Already heritage listed

No	Type	Nomination	Notes
48	Built	House 5 Anzac Ave COLLARROY	
49	Built	House 4 Cliff Road COLLARROY	
50	Built	House "Kookaburra Cottage" 50 Hay Street COLLARROY	
51	Built	Houses 13 and 15 Hendy Ave COLLARROY	
52	Landscape	Angophora trees Anzac Ave & Hendy Ave; and also Jamieson Pde & Hay Street COLLARROY	
53	Built	House Cnr Ocean Grove and Cliff Road COLLARROY	Not able to identify which house this is referring to.
54	Built	Houses 68 and 70 Anzac Avenue COLLARROY	
55	Built and Landscape	House and angophora tree 57 Anzac Ave COLLARROY	
56	Relic	Duke Kahanomuku's Surfboard Located in Freshwater Surf Club FRESHWATER	This is a movable relic.
57	Relic	Remnant winches and vegetation at Fisherman's Hut LONG REEF	Fisherman's Hut already listed. Request is for expansion of listing to include remnant winches and vegetation.
58	Landscape	Norfolk Island Pine "Wyndora Pine" End of Wyndora Ave FRESHWATER	
59	Area	Collaroy Basin Area	
60	Landscape	Trees Large native tree, 96 Fisher Road Lilli pilli, outside 35 or 37 Oaks Ave DEE WHY	
61	Monument	WW1 Obelisk	

No	Type	Nomination	Notes
		Headland behind beach NORTH CURL CURL	
62	Area	Never Been Beaten Lime and Cement Works Wakehurst Parkway NARRABEEN	Already heritage listed Additional information provided will be added to Inventory sheet
63	Built	Residential Flat Building "Bristva" 49 Beach Road COLLARROY	
64	Landscape and Area	Brookvale Park Federal Pde, Alfred Rd, Pine Ave and Pittwater Rd BROOKVALE	
65	Landscape and Area	Morgan Road/Oxford Falls Road	
66	Built	Former "Empire Hall" 760 Pittwater Road (cnr west Street) BROOKVALE	
67	Landscape	Management of street trees generally – concern for heritage listed street trees in Wyuna Avenue, Freshwater	Raised in letter to Council in October 2010
68		Presbyterian Church of St Columba 685 Warringah Road FORESTVILLE	
69		Peter Muller house 69 Forest Way FRENCHS FOREST	

Appendix G

Heritage Assessment Template

Warringah
Council

Heritage Review 2011 – Assessment of Nominations

Item Details			
Address	No:	Street:	Suburb:
Description			
Item Type			
Use			
Date approx.			
Physical Description			
Physical Condition			
Heritage Significance			
Criterion (a)	An item is important in the course, or pattern, of NSW's cultural or natural history (or the cultural or natural history of the local area)		
YES <input type="checkbox"/> NO <input type="checkbox"/>			
Criterion (b)	An item has strong or special association with the life or works of a person, or group of persons, of importance in NSW's cultural or natural history (or the cultural or natural history of the local area)		

YES <input type="checkbox"/> NO <input type="checkbox"/>	
Criterion (c)	An item is important in demonstrating aesthetic characteristics and/or a high degree of creative or technical achievement in NSW (or the local area)
YES <input type="checkbox"/> NO <input type="checkbox"/>	
Criterion (d)	An item has strong or special association with a particular community or cultural group in NSW (or the local area) for social, cultural or spiritual reasons
YES <input type="checkbox"/> NO <input type="checkbox"/>	
Criterion (e)	An item has potential to yield information that will contribute to an understanding of NSW's cultural or natural history (or the cultural or natural history of the local area)
YES <input type="checkbox"/> NO <input type="checkbox"/>	
Criterion (f)	An item possesses uncommon, rare or endangered aspects of NSW's cultural or natural history (or the cultural or natural history of the local area)
YES <input type="checkbox"/> NO <input type="checkbox"/>	
Criterion (g)	An item is important in demonstrating the principal characteristics of a class of NSW's cultural or natural places; or cultural or natural environments (or a class of the local area's cultural or natural places; or cultural or natural environments.)

YES <input type="checkbox"/> NO <input type="checkbox"/>	
Comments	
Comments	
Recommendation	
MEETS CRITERIA FOR HERITAGE LISTING <input type="checkbox"/> DOES NOT MEET HERITAGE CRITERIA <input type="checkbox"/> FURTHER INFORMATION REQUIRED <input type="checkbox"/>	
What further information is required?	
Inspected by: _____ Date: _____	

Appendix H

Final Recommendations for all Nominations (December 2012)

No	Nomination	Assessment Details	Final Recommendation
1	Waratah Park & Rangers Headquarters 13 Namba Road DUFFYS FOREST	Meets criteria for heritage listing Heritage Council has recommended that State listing has merit, therefore local listing is also appropriate	List in LEP
2	House 1035 Pittwater Road COLLAROY	Meets criteria for heritage listing	List in LEP
3	"The Black House" 44 Cowan Drive COTTAGE POINT	Likely to meet criteria for heritage listing, but needs to be confirmed by inspection	Defer
4	Soldiers Ave Trees Soldiers Ave FRESHWATER NOTE: Trees already listed – request for State Heritage Listing	Assessment determined that State Heritage Nomination could not be substantiated. Existing listing should be expanded to include plaques and memorials and camphor laurel trees	Expand existing listing Do not nominate for State listing
5	Bollards and Jetty Piers Passmore Reserve MANLY VALE	Meets criteria for heritage listing	List in LEP
6	Akuna Bay Marina 9996 McCarrs Creek Road TERREY HILLS	May meet the criteria for heritage listing, but this needs to be confirmed by research into the degree of change which has occurred.	Defer

No	Nomination	Assessment Details	Final Recommendation
7	Warringah Council Civic Centre & Landscaping, Pittwater Road DEE WHY	Meets criteria for heritage listing	List in LEP
8	Laurie Short House 307 McCarrs Creek Road TERREY HILLS	Meets criteria for heritage listing	List in LEP
9	Douglas L. Murcutt House 22 Yarrabin Street BELROSE	Meets criteria for heritage listing	List in LEP
10	Forest Heights Estate Nos. 2, 3, 4, 5, 6, 7, 8, 9, 10, 11, 12, 13, 14, 15A, 15B and 16 Virginia Place and Nos.34, 36, 38, 40, 42, 44 Altona Ave FORESTVILLE	The heritage significance of area has been too compromised by changes and alterations. Therefore a heritage conservation area listing could not be supported.	Do not list
11	Former Chadwick House and Garden 82 Arthur Street FORESTVILLE	Meets criteria for heritage listing	List in LEP
12	"The Cactus" 24 Currong Circuit (aka 10 Cooyong Road) TERREY HILLS	Does not meet criteria for heritage listing	Do not list
13	Former Hollands Orchard Warringah Road FRENCHS FOREST NOTE: Hollands Orchard already listed – request is for expansion of existing	The heritage significance of propagations confirmed – listing should be expanded to cover these propagated trees	Expand existing listing

No	Nomination	Assessment Details	Final Recommendation
	item		
14	Former Hews Home 5 Primrose Ave (cnr Hillmer St) FRENCHS FOREST	Alterations have compromised heritage significance.	Do not list
15	Headstone of James Harris French Assembly Hall - Forest High FRENCHS FOREST	Do not list in LEP This is a movable relic and while of historical importance, movable items are not normally listed in LEP heritage schedules. Further investigation required into how to protect movable items of heritage	Do not list
16	Weatherboard dwelling 17 Blackbutts Road FRENCHS FOREST	Does not meet criteria for heritage listing	Do not list
17	Dwelling Group Nos. 81, 83 & 83A Prince Charles Rd FRENCHS FOREST	Does not meet criteria for heritage listing	Do not list
18	Dwelling 52 Forest Way FRENCHS FOREST	Comparative analysis of other examples of this type undertaken. This example not rare or particularly representative	Do not list
19	Group of 5 Houses Nos. 38, 40, 42, 44 and 46 Grace Avenue FRENCHS FOREST	Originally recommended for listing as a group but this was reassessed in light of owner comments and issues with future management of heritage group.	Do not list
20	Group of 7 Houses Nos. 21-23, 25, 27, 29, 31, 33 and 41	Originally recommended for listing as a group but this was reassessed in light of owner comments and issues with	Do not list

No	Nomination	Assessment Details	Final Recommendation
	Grace Avenue FRENCHS FOREST	future management of heritage group	
21	Soldiers Settlement Dwelling 8 Duke Street (cnr Ryrie Ave) FORESTVILLE	Meets criteria for heritage listing	List in LEP
22	Soldiers Settlement Dwelling 17 Starkey Street FORESTVILLE	Meets heritage criteria, but already subject to subdivision and demolition consent, Therefore should not be listed	Do not list
23	Former Henry Goggins Home 26 Maxwell Parade FORESTVILLE	Does not meet criteria for heritage listing	Do not list
24	House - "Firle" 32 Suffolk Avenue COLLAROY	Does not meet criteria for heritage listing	Do not list
25	Church Building (and former Army Barracks) Churches of Christ 1 Weardon Road BELROSE	Does not meet criteria for heritage listing	Do not list
26	"Lockwood" home 3 Clwydon Close BELROSE	Does not meet criteria for heritage listing	Do not list
27	Oak Tree 44 Pringle Ave BELROSE	Does not meet criteria for heritage listing	Do not list

No	Nomination	Assessment Details	Final Recommendation
28	Streetscape (landscaping, median strip & Council reserve) 169-181 Forest Way BELROSE	Does not meet criteria for heritage listing	Do not list
29	Retail Shops 10 – 28 Lawrence Street FRESHWATER	Does not meet criteria for heritage listing	Do not list
30	Wrought Iron Door 10 Fisher Road DEE WHY	Does not meet criteria for heritage listing	Do not list
31	Harbord Diggers Club Site and McKillop Park Freshwater Headland FRESHWATER	Does not meet criteria for heritage listing	Do not list
32	Harbord Diggers Club Site and McKillop Park, Freshwater Headland FRESHWATER NOTE: Also nominated for State Heritage Listing	Does not meet criteria for heritage listing As it does not meet threshold for local heritage listing, a State heritage listing nomination cannot be sustained.	Do not list
33	House 1A Mactier Street COLLARROY	Does not meet criteria for heritage listing	Do not list
34	House 1225 Pittwater Road COLLARROY	Does not meet criteria for heritage listing	Do not list

No	Nomination	Assessment Details	Final Recommendation
35	House 160 Fuller Street NARRABEEN	Does not meet criteria for heritage listing	Do not list
36	House 132 Rose Avenue COLLAROY	Does not meet criteria for heritage listing	Do not list
37	House 971 Pittwater Road COLLAROY	Meets criteria for heritage listing	List in LEP
38	House 49 Anzac Avenue COLLAROY	Does not meet criteria for heritage listing	Do not list
39	House 51 Anzac Avenue COLLAROY	Does not meet criteria for heritage listing	Do not list
40	House 29 Hendy Avenue COLLAROY	Does not meet criteria for heritage listing	Do not list
41	House 68 Anzac Avenue COLLAROY	Does not meet criteria for heritage listing	Do not list
42	House "Sunnybank" 13 Worcester Street (cnr Ocean Grove) COLLAROY	Meets criteria for heritage listing	List in LEP

No	Nomination	Assessment Details	Final Recommendation
43	House 12 Worcester Street COLLAROY	Does not meet criteria for heritage listing	Do not list
44	Houses Nos. 6, 16, 18, 19, 20 Beach Road COLLAROY	No. 6 - Does not meet criteria for heritage listing No. 16 – already heritage listed No. 18 – already heritage listed No. 19 - Does not meet criteria for heritage listing No. 20 - Does not meet criteria for heritage listing	Do not list No 6, No 19 & No 20 Nos 16 & 18 already listed
45	House 8 Ocean Grove COLLAROY	Does not meet criteria for heritage listing	Do not list
46	House “Beach Cottage” 16 Seaview Road COLLAROY	Does not meet criteria for heritage listing	Do not list
47	House 8 Seaview Pde COLLAROY	Already heritage listed	Already heritage listed
48	House 5 Anzac Ave COLLAROY	Does not meet criteria for heritage listing	Do not list
49	House 4 Cliff Road COLLAROY	Does not meet criteria for heritage listing	Do not list
50	House “Kookaburra Cottage” 50 Hay Street COLLAROY	Does not meet criteria for heritage listing	Do not list

No	Nomination	Assessment Details	Final Recommendation
51	Houses 13 and 15 Hendy Ave COLLAROY	No. 13 (also known as 1 Melody Lane) - Does not meet criteria for heritage listing No 15 - Does not meet criteria for heritage listing	Do not list
52	Angophora trees Anzac Ave & Hendy Ave; and also Jamieson Pde & Hay Street COLLAROY	Meets criteria for heritage listing in Anzac Ave and Hendy Ave (including the Sydney Pink Gum near 57 Anzac Ave) Jamieson Pde and Hay Street have no remaining native canopy trees and therefore should not be included.	List in LEP (only street trees Anzac Ave and Hendy Ave)
53	House Cnr Ocean Grove and Cliff Road COLLAROY	Not able to identify which house was nominated.	No action required
54	Houses 68 and 70 Anzac Avenue COLLAROY	No 68 - Does not meet criteria for heritage listing No 70 - Does not meet criteria for heritage listing	Do not list
55	House and angophora tree 57 Anzac Ave COLLAROY	House - Does not meet criteria for heritage listing Tree – Meets criteria for heritage listing, but not as a single tree, but part of street trees generally (see No. 52)	Do not list house Tree outside 57 Anzac Ave - list as part of street tree listing for Anzac Ave and Hendy Ave.
56	Duke Kahanomuku's Surfboard Located in Freshwater Surf Club FRESHWATER	Do not list in LEP This is a movable relic and while of historical importance, movable items are not normally listed in LEP heritage schedules. Further investigation required into how to protect movable items of heritage	Do not list
57	Remnant winches and vegetation at Fisherman's Hut	Vegetation and winches meet criteria for heritage listing.	Expand existing listing in LEP to cover vegetation and remnant

No	Nomination	Assessment Details	Final Recommendation
	LONG REEF NOTE: Fisherman's Hut already listed. Request is for expansion of listing.	Existing listing should be expanded to include the curtilage of the Fisherman's Hut.	winches
58	Norfolk Island Pine "Wyndora Pine" End of Wyndora Ave FRESHWATER	Does not meet criteria for heritage listing	Do not list
59	Collaroy Basin Area	Does not meet criteria for heritage listing	Do not list
60	Trees Large native tree, 96 Fisher Road Lilli pilli, outside 35 or 37 Oaks Ave DEE WHY	96 Fisher Rd - Does not meet criteria for heritage listing 37 Oaks Ave - Does not meet criteria for heritage listing	Do not list
61	WW1 Obelisk Headland behind beach NORTH CURL CURL	Meets criteria for heritage listing.	List in LEP
62	Never Been Beaten Lime and Cement Works Wakehurst Parkway NARRABEEN	Already heritage listed Additional information provided will be added to Inventory sheet	Already listed
63	Residential Flat Building "Bristva" 49 Beach Road COLLARROY	Defer listing to enable comparative assessment of similar buildings	Defer
64	Brookvale Park Federal Pde, Alfred Rd, Pine Ave and Pittwater Rd BROOKVALE	Perimeter plantings of Box Brush and Camphor Laurels trees meet criteria for heritage listing	List in LEP (perimeter trees only)

No	Nomination	Assessment Details	Final Recommendation
65	Morgan Road/Oxford Falls Road	Assessment deferred pending completion of <i>Oxford Falls Valley and Belrose North Strategic Review</i> , which will include a review of heritage issues.	Defer
66	Former "Empire Hall" 760 Pittwater Road (cnr west Street) BROOKVALE	Does not meet criteria for heritage listing	Do not list
67	Management of street trees generally – concern for heritage listed street trees in Wyuna Avenue, Freshwater	Still to be investigated Raised in letter to Council in October 2010	Recommend preparation of policy for street tree management
68	Presbyterian Church of St Columba 685 Warringah Road FORESTVILLE	Meets criteria for heritage listing	List in LEP
69	Peter Muller house 69 Forest Way FRENCHS FOREST	Does not meet criteria for heritage listing	Do not list

Appendix I

Proposed New Heritage Items

Suburb	Item Name	Address	Property Description	Significance
Belrose	Douglas L Murcutt House	22 Yarrabin Street	Lot 23 DP 224801	Local
Brookvale	Brush Box and Camphor Laurel Trees surrounding Brookvale Park	Pine Ave, Alfred Street, unmade section of Federal Pde and Pittwater Rd (near Pine Street intersection)	As shown on Heritage Map	Local
Collaroy	House	971 Pittwater Road	Lot 12 DP 10519	Local
Collaroy	House "Silver Mist"	1035 Pittwater Road	Lot 200 DP 1005008	Local
Collaroy	House "Sunnybank"	13 Worchester Street	Lot 1 Sec 22 DP 12012	Local
Collaroy	Remnant Native Street Trees	Anzac Ave and Hendy Ave	Road Reserve (as shown on Heritage Map)	Local
Dee Why	Warringah Civic Centre & Landscaping	Pittwater Road	Lot 100 DP 1041823	Local
Duffys Forest	Waratah Park and Rangers Headquarters	13 Namba Road	Lot 445 DP 824043	Local
Forestville	Former Chadwick House and Garden	82 Arthur Street	Lot 24 DP 605792	Local
Forestville	Soldiers Settlement Dwelling	8 Duke Street	Lot A DP 386755	Local
Forestville	Presbyterian Church of St Columba	685 Warringah Road	Lot 1514 DP 752038	Local
Manly Vale	Timber bollards and jetty remnants	Within Manly Lagoon, adjacent to Passmore Reserve	Part Lot 2743 DP 752038 (as shown on Heritage Map)	Local
North Curl Curl	WW1 Obelisk	Cliff behind North Curl Curl Beach	Lot 7356 DP 1167221 (as shown on Heritage Map)	Local
Terrey Hills	Laurie Short House	307 McCarrs Creek Road	Lot 142 DP 752017	Local

Appendix I (cont.)**Proposed Expansion of Existing Heritage Items**

Item No	Suburb	Existing Item Name	Proposed Item Name	Proposed Property Description	Proposed Change
I11	Collaroy	Fisherman's Hut	Fisherman's Hut, including winches and remnant vegetation.	As shown on Heritage Map.	Extend listing to also cover the remnant vegetation and winches associated with the Hut.
I75	Freshwater	Street Trees	Street trees, plaques and memorials	Road Reserve as shown on Heritage Map.	Extend listing to cover plaques and memorials and camphor laurel trees.
I62	Frenchs Forest	Former Holland's Orchard Trees	Former Holland's Orchard and Commemorative Grove"	Adjacent to Warringah Road and within Forest High School grounds. Lot 2 DP 234702 & Lot 2 DP 746670"	Extend listing to cover the commemorative grove located on grounds of Frenchs Forest High School.