



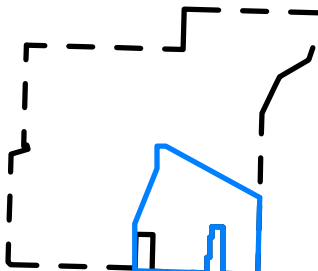
 northern
beaches
council

THIS PLAN IS TO BE READ IN
CONJUNCTION WITH
THE CONDITIONS OF DEVELOPMENT
CONSENT

MOD2021/0324

- LEGEND
- SITE BOUNDARY 207
 - DA BOUNDARY
 - SITE BOUNDARY 199
 - BAL 29
 - BAL 40
 - MIN SETBACK FOR SFPP

Key Plan:



Drawing Disclaimer:

Do not scale from drawings.
Verify all dimensions on site before commencing work.
Copying or reproduction of this drawing is strictly prohibited without the consent of PTW Architects

PTW takes no responsibility for external building elements. Anything connected with any design, materials selection, construction or installation of any cladding, facade or external building element must be checked by and remains the responsibility of others, including suitably qualified experts as may be required.

- SECTION 4.55 NOTES:
- MAIN ROOF MATERIAL CHANGE FROM COLORBOND TO CONCRETE AND MEMBRANE.
 - FFL ADJUSTED

06	SECTION 4.55	DB	DJ	210430
05	SECTION 4.55	PTW		200402
04	DA ISSUE	PTW		180808
03	DA ISSUE	PTW		180807
02	DA ISSUE	PTW		180731
01	DA ISSUE	PTW		180727
Rv	Amendment	By	Ck	Date

Consultant

Client

Lend Lease Development Service Pty, Ltd
Level 14, Tower Three Exchange Place, 300
Barangaroo Avenue, Barangaroo NSW 2000

Architect

PTW Architects
Level 11, 88 Phillip Street
Sydney NSW 2000 Australia
T +61 2 9232 5877
ptw.com.au

Peddie Thorp & Walker P/L
ABN 23 000 454 424
trading as PTW Architects

NSW Nominated Architects
S Parsons Architect No.6098
D Jones Architect No.4778

Project PA016904.01

Glenaeon Retirement Village

207 Forest Way Belrose NSW 2085

Title

SITE PLAN

Drawing Number

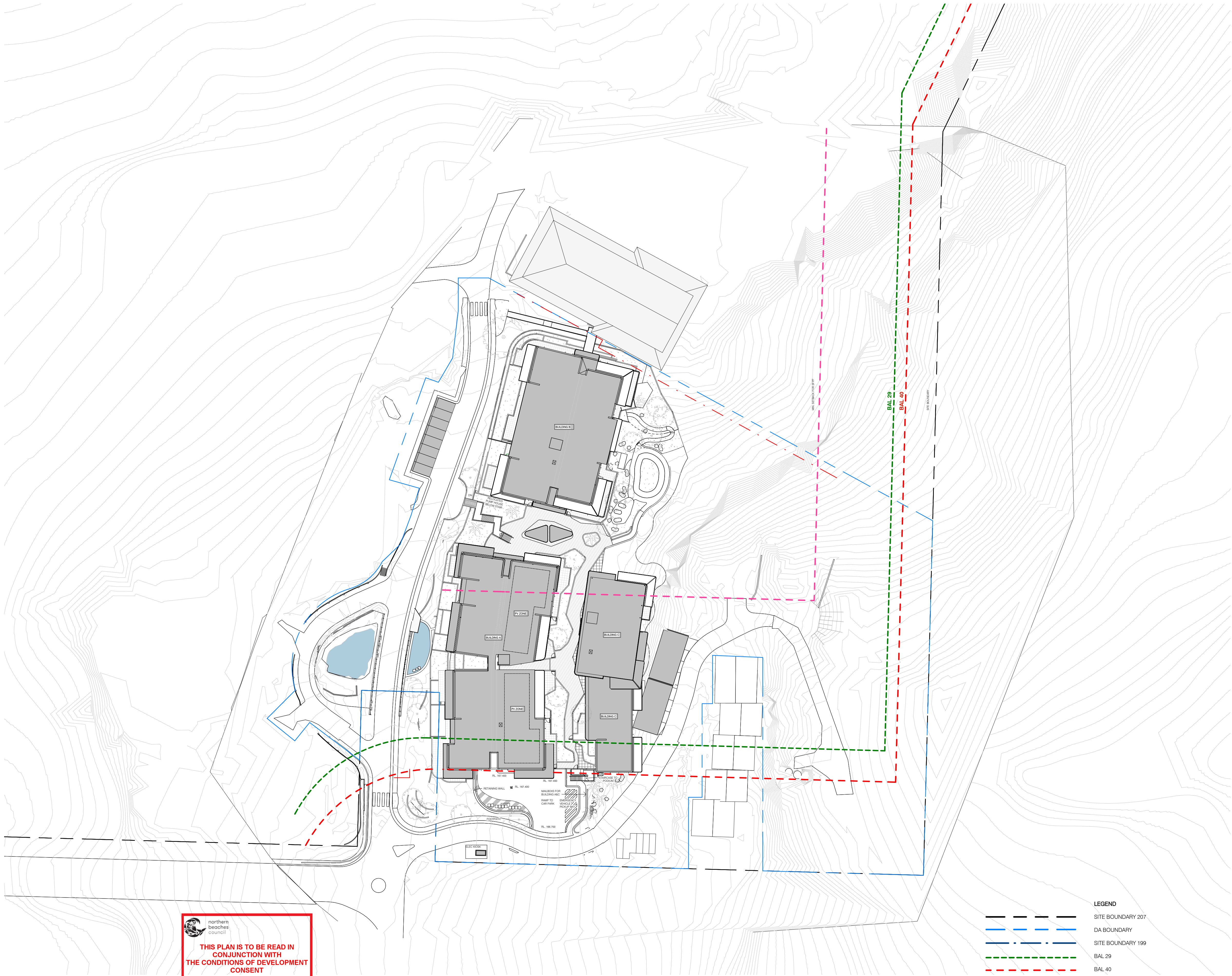
256773_ADA_002


Revision

06

Status

SECTION 4.55



 northern
beaches
council

THIS PLAN IS TO BE READ IN
CONJUNCTION WITH
THE CONDITIONS OF DEVELOPMENT
CONSENT

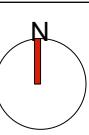
MOD2021/0324

1 SITE ROOF PLAN
1 : 500

LEGEND

--- SITE BOUNDARY 207
--- DA BOUNDARY
--- SITE BOUNDARY 199
--- BAL 29
--- BAL 40
--- MIN SETBACK FOR SFPF

Key Plan:



Drawing Disclaimer:

Do not scale from drawings.
Verify all dimensions on site before commencing work.
Copying or reproduction of this drawing is strictly prohibited without the
consent of PTW Architects

PTW takes no responsibility for external building elements. Anything
connected with any design, materials selection, construction or installation of
any cladding, facade or external building element must be checked by and
remains the responsibility of others, including suitably qualified experts as
may be required.


SECTION 4.55 NOTES:

1. MAIN ROOF MATERIAL CHANGE FROM
COLORBOND TO CONCRETE AND
MEMBRANE.
2. FFL ADJUSTED

07	SECTION 4.55	DB	DJ	210430
06	SECTION 4.55	PTW		200402
05	SECTION 4.55	PTW		200302
04	DA ISSUE	PTW		180808
03	DA ISSUE	PTW		180807
02	DA ISSUE	PTW		180731
01	DA ISSUE	PTW		180727
Rv	Amendment	By	Ck	Date

Consultant

Client

Lend Lease Development Service Pty, Ltd
Level 14, Tower Three Exchange Place, 300
Barangaroo Avenue, Barangaroo NSW 2000


Architect

PTW Architects
Level 11, 88 Phillip Street
Sydney NSW 2000 Australia
T +61 2 9232 5877
ptw.com.au

Peddie Thorp & Walker P/L NSW Nominated Architects
ABN 23 000 454 424 S Parsons Architect No.6098
trading as PTW Architects D Jones Architect No.4778

Project PA016904.01

Glenaeon Retirement Village

207 Forest Way Belrose NSW 2085

Title

SITE ROOF PLAN

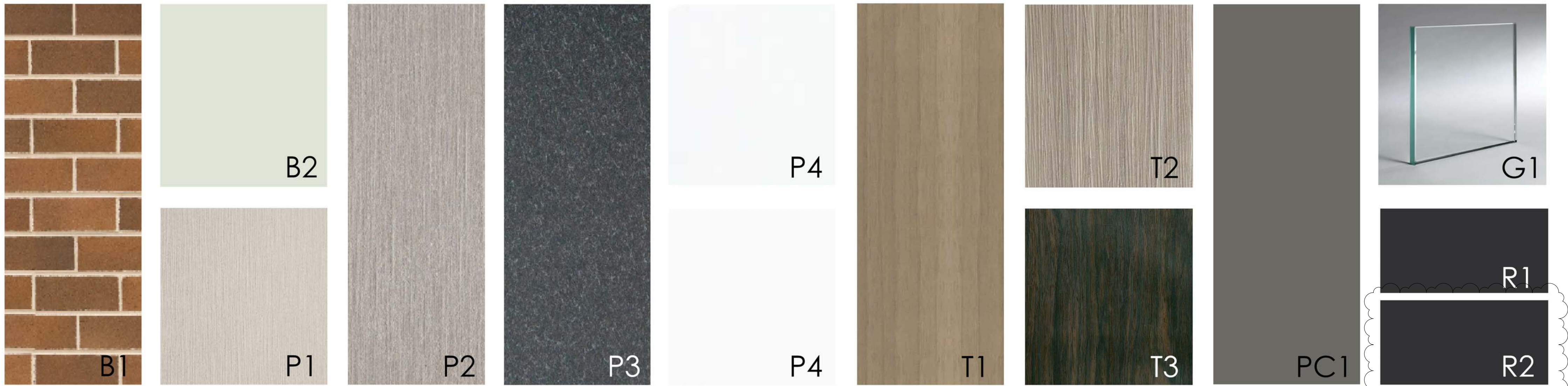
0 5 10 20 30 40m

Drawing Number Revision

256773_ADA_015 07

Status
SECTION 4.55

external materials palette



B1. Building Facade and parapets - Bowral Bricks, Dry Pressed, 230 x 110 x 76mm, Bowral Brown
B2. Building Facade and entry - Euroa Clay Products, Glazed Brick, 230 x 110 x 75mm, Satin Off White
P1. Building Facade - Equitone, (TECTIVA) TE10
P2. Building Facade - Equitone, (TECTIVA) TE60

GLENAEON RETIREMENT VILLAGE

P3. Building Facade and eaves - Equitone, (NATURA) N251
P4. White aluminium panel
T1. Timber screening and selected balcony soffits - Decowood, Timber look aluminium products, Natural Weathered Timber
T2. Timber Screening and selected balcony soffits - Covet, Ever Art Wood, Kurashikku

T3. Timber Screening - Covet, Ever Art Wood, Burakku Eboni
PC1. Aluminium window frames - Dulux, Duralloy Powder Coat Range, Wallaby Satin 2607474S
R1. Roof finish and downpipes - Colorbond steel, Monument
R2. Roof finish - Charcoal Grey
G1. Glazing - Low-e glass

northern beaches council
THIS PLAN IS TO BE READ IN CONJUNCTION WITH THE CONDITIONS OF DEVELOPMENT CONSENT
MOD2021/0324

Key Plan:

Drawing Disclaimer:

Do not scale from drawings.
Verify all dimensions on site before commencing work.
Copying or reproduction of this drawing is strictly prohibited without the consent of PTW Architects

PTW takes no responsibility for external building elements. Anything connected with any design, materials selection, construction or installation of any cladding, facade or external building element must be checked by and remains the responsibility of others, including suitably qualified experts as may be required.

- SECTION 4.55 NOTES:
- MAIN ROOF MATERIAL CHANGE FROM COLORBOND TO CONCRETE AND MEMBRANE.
 - FFL ADJUSTED

05	SECTION 4.55	DB	DJ	210430
04	DA ISSUE	PTW		180808
03	DA ISSUE	PTW		180807
02	DA ISSUE	PTW		180731
01	DA ISSUE	PTW		180727
Rv	Amendment	By	Ck	Date

Consultant

Client
Lend Lease Development Service Pty, Ltd
Level 14, Tower Three Exchange Place, 300
Barangaroo Avenue, Barangaroo NSW 2000

Architect
PTW Architects
Level 11, 88 Phillip Street
Sydney NSW 2000 Australia
T +61 2 9232 5877
ptw.com.au

NSW Nominated Architects
S Parsons Architect No.6098
D Jones Architect No.4778

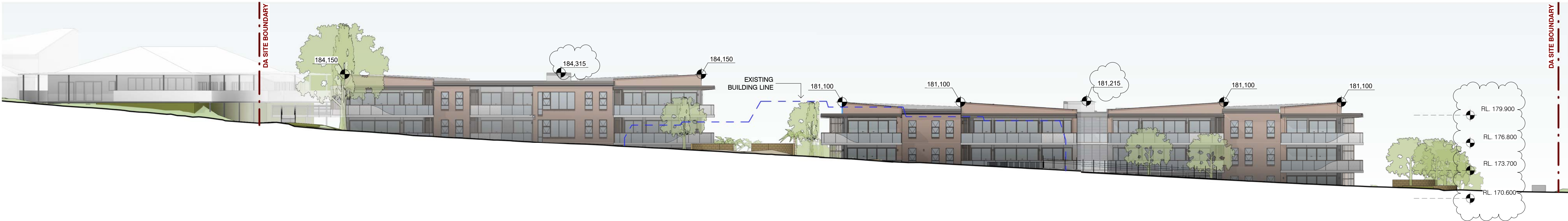
Project PA016904.01
Glenaeon Retirement Village
207 Forest Way Belrose NSW 2085

Title
MATERIALS BOARD

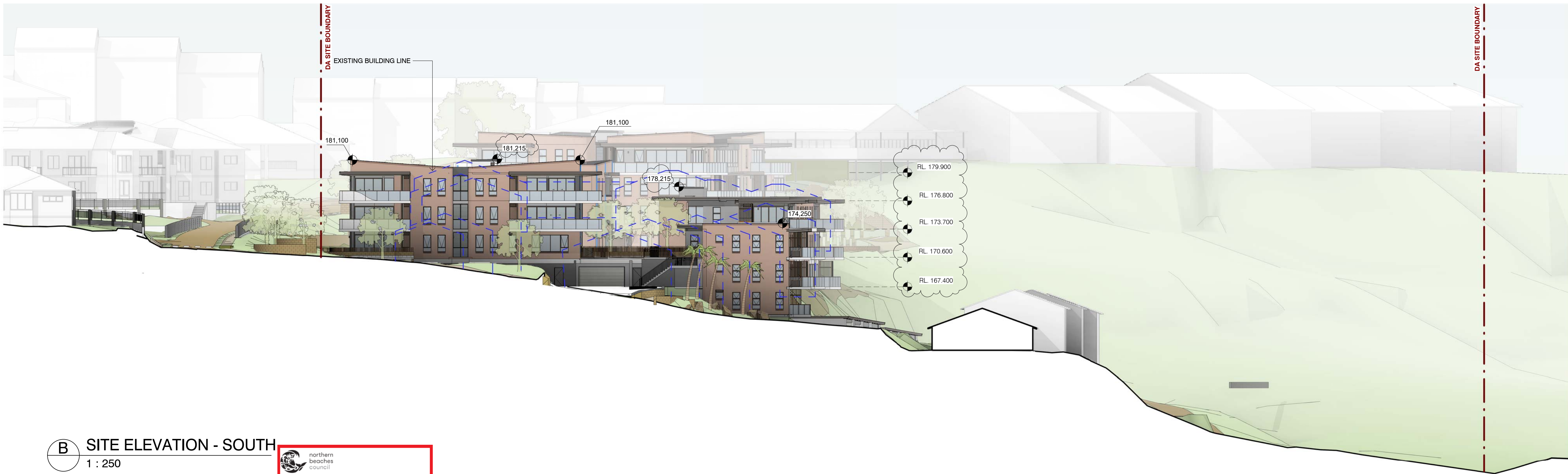
Drawing Number
256773_ADA_016

Revision
05

Status
SECTION 4.55



A SITE ELEVATION - WEST
1 : 250



B SITE ELEVATION - SOUTH
1 : 250

**THIS PLAN IS TO BE READ IN
CONJUNCTION WITH
THE CONDITIONS OF DEVELOPMENT
CONSENT**

MOD2021/0324

Key Plan:

Drawing Disclaimer:

Do not scale from drawings.
Verify all dimensions on site before commencing work.
Copying or reproduction of this drawing is strictly prohibited without the consent of PTW Architects

NOTE: REFER TO SURVEY DRAWING (11628701000) FOR RIDGE HEIGHTS OF EXISTING BUILDINGS. Section, construction or installation of any cladding, facade or external building element must be checked by and remains the responsibility of others, including suitably qualified experts as may be required.

- SECTION 4.55 NOTES:**
1. MAIN ROOF MATERIAL CHANGE FROM COLORBOND TO CONCRETE AND MEMBRANE.
 2. FFL ADJUSTED

07	SECTION 4.55	DB	DJ	210430
06	SECTION 4.55	PTW		200402
05	SECTION 4.55	PTW		200302
04	DA ISSUE	PTW		180808
03	DA ISSUE	PTW		180807
02	DA ISSUE	PTW		180731
01	DA ISSUE	PTW		180727
Rv	Amendment	By	Ck	Date

Consultant

Client
Lend Lease Development Service Pty, Ltd
Level 14, Tower Three Exchange Place, 300
Barangaroo Avenue, Barangaroo NSW 2000
lendlease

Architect
PTW Architects
Level 11, 88 Phillip Street
Sydney NSW 2000 Australia
T +61 2 9232 5877
ptw.com.au
Piedra Thorp & Walker P/L
ABN 23 000 454 424
trading as PTW Architects
NSW Nominated Architects
S Parsons Architect No.6098
D Jones Architect No.4778

Project PA016904.01
Glenaeon Retirement Village

207 Forest Way Belrose NSW 2085

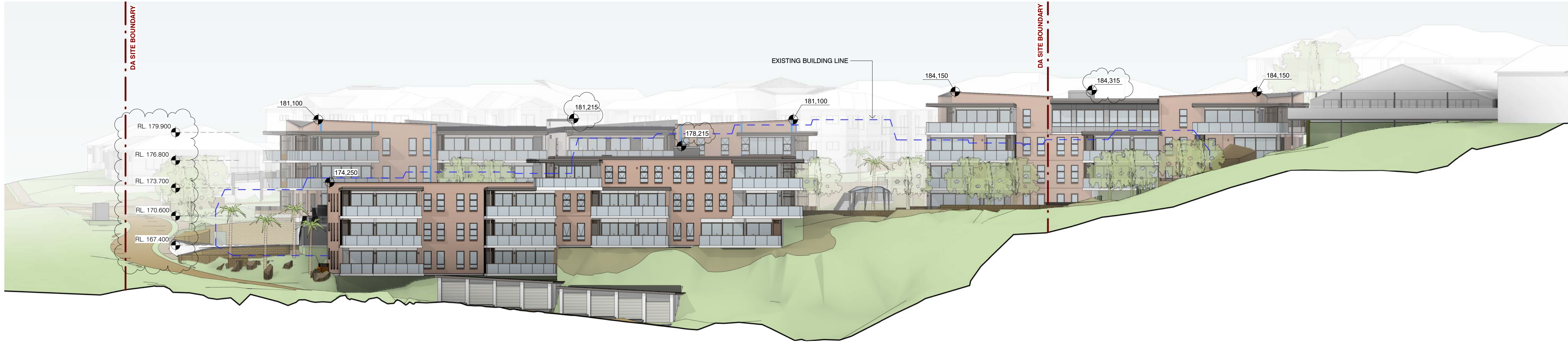
Title
SITE ELEVATIONS

0 2 5 10 20m


Drawing Number
256773_ADA_401

Revision
07

Status
SECTION 4.55



C SITE ELEVATION - EAST
1 : 250

 northern
beaches
council

THIS PLAN IS TO BE READ IN
CONJUNCTION WITH
THE CONDITIONS OF DEVELOPMENT
CONSENT

MOD2021/0324

Key Plan:

Drawing Disclaimer:

Do not scale from drawings.
Verify all dimensions on site before commencing work.
Copying or reproduction of this drawing is strictly prohibited without the consent of PTW Architects

PTW takes no responsibility for external building elements. Anything connected with any design, materials selection, construction or installation of any cladding, facade or external building element must be checked by and remains the responsibility of others, including suitably qualified experts as may be required.

- SECTION 4.55 NOTES:**
1. MAIN ROOF MATERIAL CHANGE FROM COLORBOND TO CONCRETE AND MEMBRANE.
 2. FFL ADJUSTED

07	SECTION 4.55	DB	DJ	210430
06	SECTION 4.55	PTW		200402
05	SECTION 4.55	PTW		200302
04	DA ISSUE	PTW		180808
03	DA ISSUE	PTW		180807
02	DA ISSUE	PTW		180731
01	DA ISSUE	PTW		180727
Rv	Amendment	By	Ck	Date

Consultant

Client
Lend Lease Development Service Pty, Ltd
Level 14, Tower Three Exchange Place, 300
Barangaroo Avenue, Barangaroo NSW 2000


Architect
PTW Architects
Level 11, 88 Phillip Street
Sydney NSW 2000 Australia
T +61 2 9232 5877
ptw.com.au

Peddie Thorp & Walker P/L
ABN 23 000 454 424
trading as PTW Architects

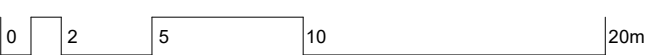
NSW Nominated Architects
S Parsons Architect No.6098
D Jones Architect No.4778

Project PA016904.01

Glenaeon Retirement Village

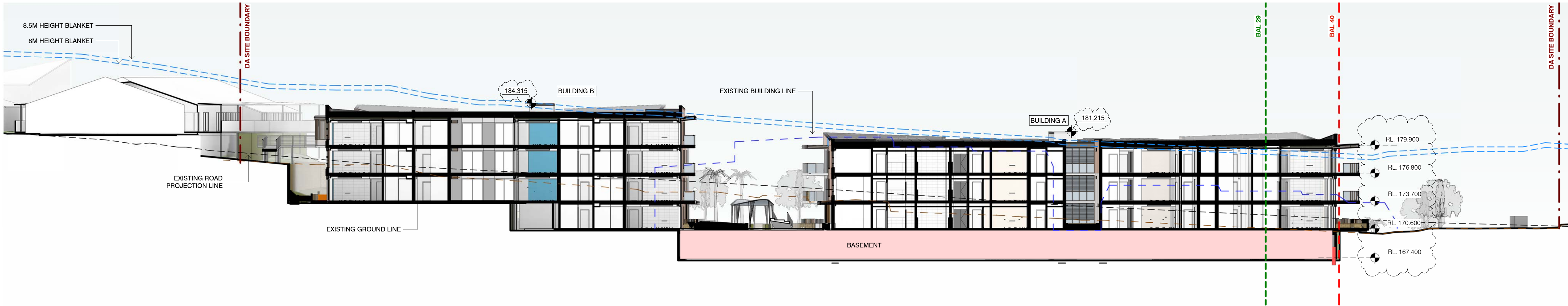
207 Forest Way Belrose NSW 2085

Title
SITE ELEVATIONS

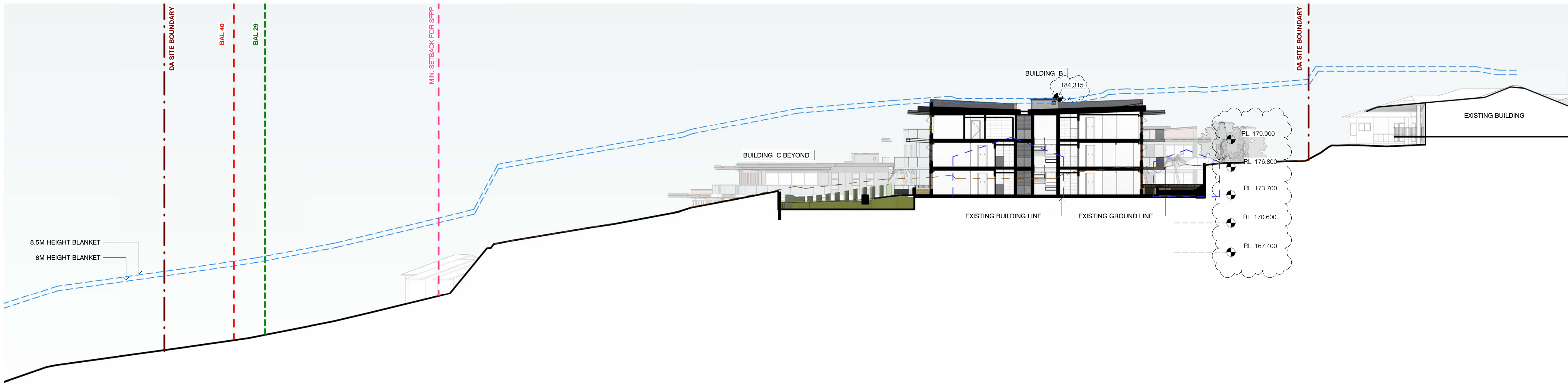


Drawing Number	Revision
256773_ADA_402	07


Status
SECTION 4.55



A SECTION A
1 : 250



B SECTION B
1 : 250


northern
beaches
council

**THIS PLAN IS TO BE READ IN
CONJUNCTION WITH
THE CONDITIONS OF DEVELOPMENT
CONSENT**

MOD2021/0324

Key Plan:

Drawing Disclaimer:
Do not scale from drawings.
Verify all dimensions on site before commencing work.
Copying or reproduction of this drawing is strictly prohibited without the
consent of PTW Architects

NOTE: REFER TO SURVEY DRAWING (11828701004) FOR RIDGE
HEIGHTS OF EXISTING BUILDINGS. Section, construction or installation of
any cladding, facade or external building element must be checked by and
remains the responsibility of others, including suitably qualified experts as
may be required.

SECTION 4.55 NOTES:

1. MAIN ROOF MATERIAL CHANGE FROM
COLORBOND TO CONCRETE AND
MEMBRANE.
2. FFL ADJUSTED

06	SECTION 4.55	DB	DJ	210430
05	SECTION 4.55	PTW		200402
04	DA ISSUE	PTW		180808
03	DA ISSUE	PTW		180807
02	DA ISSUE	PTW		180731
01	DA ISSUE	PTW		180727
Rv	Amendment	By	Ck	Date

Consultant

Client
Lend Lease Development Service Pty, Ltd
Level 14, Tower Three Exchange Place, 300
Barangaroo Avenue, Barangaroo NSW 2000


Architect
PTW Architects
Level 11, 88 Phillip Street
Sydney NSW 2000 Australia
T +61 2 9232 5877
ptw.com.au
Peddie Thorp & Walker P/L ABN 23 000 454 624 trading as PTW Architects NSW Nominated Architects S Parsons Architect No.6098 D Jones Architect No.4778

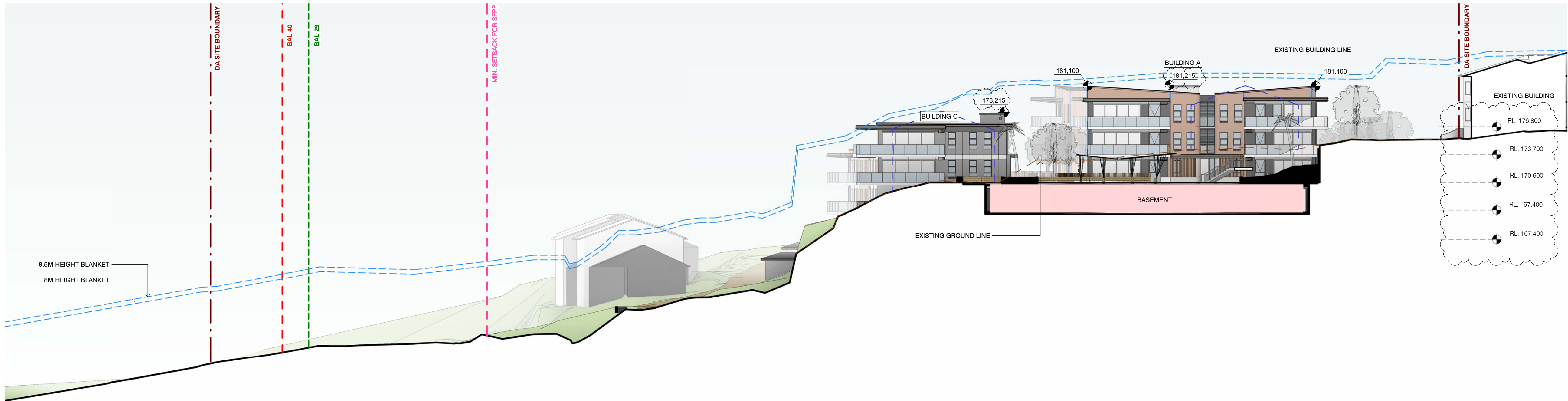
Project PA016904.01
Glenaeon Retirement Village

207 Forest Way Belrose NSW 2085

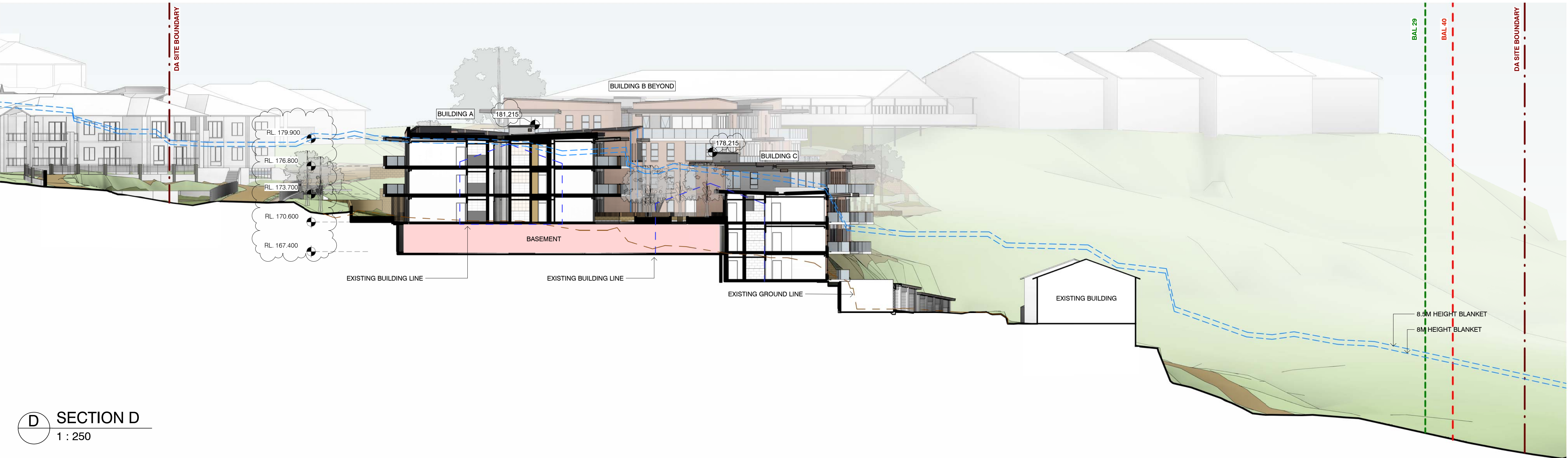
Title
SITE SECTION

Drawing Number 256773_ADA_501
Revision 06


Status
SECTION 4.55



C SECTION C
1 : 250



D SECTION D
1 : 250

 **THIS PLAN IS TO BE READ IN CONJUNCTION WITH THE CONDITIONS OF DEVELOPMENT CONSENT**
MOD2021/0324

Key Plan:

Drawing Disclaimer:


Do not scale from drawings.
Verify all dimensions on site before commencing work.
Copying or reproduction of this drawing is strictly prohibited without the consent of PTW Architects

NOTE: REFER TO SURVEY DRAWING (11628701004) FOR RIDGE HEIGHTS OF EXISTING BUILDINGS. Section, construction or installation of any cladding, facade or external building element must be checked by and remains the responsibility of others, including suitably qualified experts as may be required.

- SECTION 4.55 NOTES:**
1. MAIN ROOF MATERIAL CHANGE FROM COLORBOND TO CONCRETE AND MEMBRANE.
 2. FFL ADJUSTED

06	SECTION 4.55	DB	DJ	210430
05	SECTION 4.55	PTW		200402
04	DA ISSUE	PTW		180808
03	DA ISSUE	PTW		180807
02	DA ISSUE	PTW		180731
01	DA ISSUE	PTW		180727
Rv	Amendment	By	Ck	Date

Consultant

Client
Lend Lease Development Service Pty, Ltd
Level 14, Tower Three Exchange Place, 300
Barangaroo Avenue, Barangaroo NSW 2000


Architect
PTW Architects
Level 11, 88 Phillip Street
Sydney NSW 2000 Australia
T +61 2 9232 5877
ptw.com.au
Peddie Thorp & Walker P/L ABN 23 000 454 624 trading as PTW Architects
NSW Nominated Architects S Parsons Architect No.6098 D Jones Architect No.4778

Project PA016904.01
Glenaeon Retirement Village

207 Forest Way Belrose NSW 2085

Title
SITE SECTION

Drawing Number
256773_ADA_502

Revision
06

Status
SECTION 4.55