

# Capella

307 Sydney Road & 12 Boyle Street, Balgowlah

**LANDSCAPE ARCHITECTURE - S4.56 PACKAGE**





# BOYLE STREET

DRIVEWAY TO ARCHITECTS DETAILS

T24

1000mm HIGH OPEN FENCE IN ACCORDANCE TO CONDITION v)

NEW VIBURNUM HEDGE AND MAINTAINED AT 1.8M HIGH IN ACCORDANCE TO CONDITION i). REFER LA02 FOR PROPOSED SPECIES

EXISTING FOOTPATH

GARBAGE HOLDING AREA

LIGHTWEIGHT PERGOLA TO PATHWAY

No.10 Boyle Street

No.14 Boyle Street

2 NEW TREES IN ACCORDANCE TO CONDITION w)

NEW HEDGE TO PLANTER IN ACCORDANCE TO CONDITION u)

1m HIGH METAL PALISADE FENCE IN GARDEN BED IN ACCORDANCE TO CONDITION aa)

EXISTING DRYSTONE WALL TO BE RETAINED

1.6m HIGH HEDGE IN ACCORDANCE TO CONDITION x)

1 NEW REPLACEMENT TREE IN ACCORDANCE TO CONDITION s). REFER LA02 FOR PROPOSED SPECIES

1.8m HIGH PRIVACY SCREEN

EXISTING DRYSTONE WALL TO BE RETAINED

EXISTING GARDEN RETAINED

EXISTING GARAGE

EXISTING LAWN

No.307 SYDNEY ROAD CAPELLA BUILDING RETAINED

600mm WIDE PLANTER IN ACCORDANCE TO CONDITION bb)  
1000mm BALUSTRADE TO INTERNAL EDGE OF PLANTER

2 NEW EVERGREEN TREES IN ACCORDANCE TO CONDITION i)

MIN 500mm WIDE GARDEN IN ACCORDANCE TO CONDITION j)

DEEP SOIL ZONE WITH SPECIES WITH MAXIMUM HEIGHT OF 2m IN ACCORDANCE TO CONDITION q)

U02 3 Bed 156.76 m<sup>2</sup> RL44.20

MIN 600mm SOIL DEPTH IN ACCORDANCE TO CONDITION y)

EXISTING GARDEN RETAINED

## LEGEND

--- SITE BOUNDARY  
● EXISTING TREE RETAINED  
● TREE PROTECTION ZONE (TPZ) SHOWN IN BLUE

■ PROPOSED TURF  
■ TIMBER DECK

■ PROPOSED CRAZY PAVING  
■ STONE STEPPERS IN GRAVEL

● PROPOSED TREE  
● PROPOSED SHRUBS

■ PROPOSED GROUNDCOVERS

SCALE 1:100 @ A1  
0 2 4 8 12m

# LANDSCAPE PLAN

project: Capella 307 Sydney Rd, 12 Boyle St, Balgowlah  
client: Sun Property Group  
date: 23.06.2022  
revision: C  
drawn: CS  
checked: DMT

**TaylorBrammer**  
TAYLOR BRAMMER LANDSCAPE ARCHITECTS PTY LTD  
SYDNEY STUDIO  
218 Oxford Street Woolahra, NSW, 2025 E sydney@taylorbrammer.com.au T 61 2 9387 8855  
Copyright of Taylor Brammer Landscape Architects Pty Ltd. ABN 61 098 724 988

LA01



PLANT SCHEDULE

INDICATIVE PLANT SCHEDULE CAPELLA, BALGOWLAH

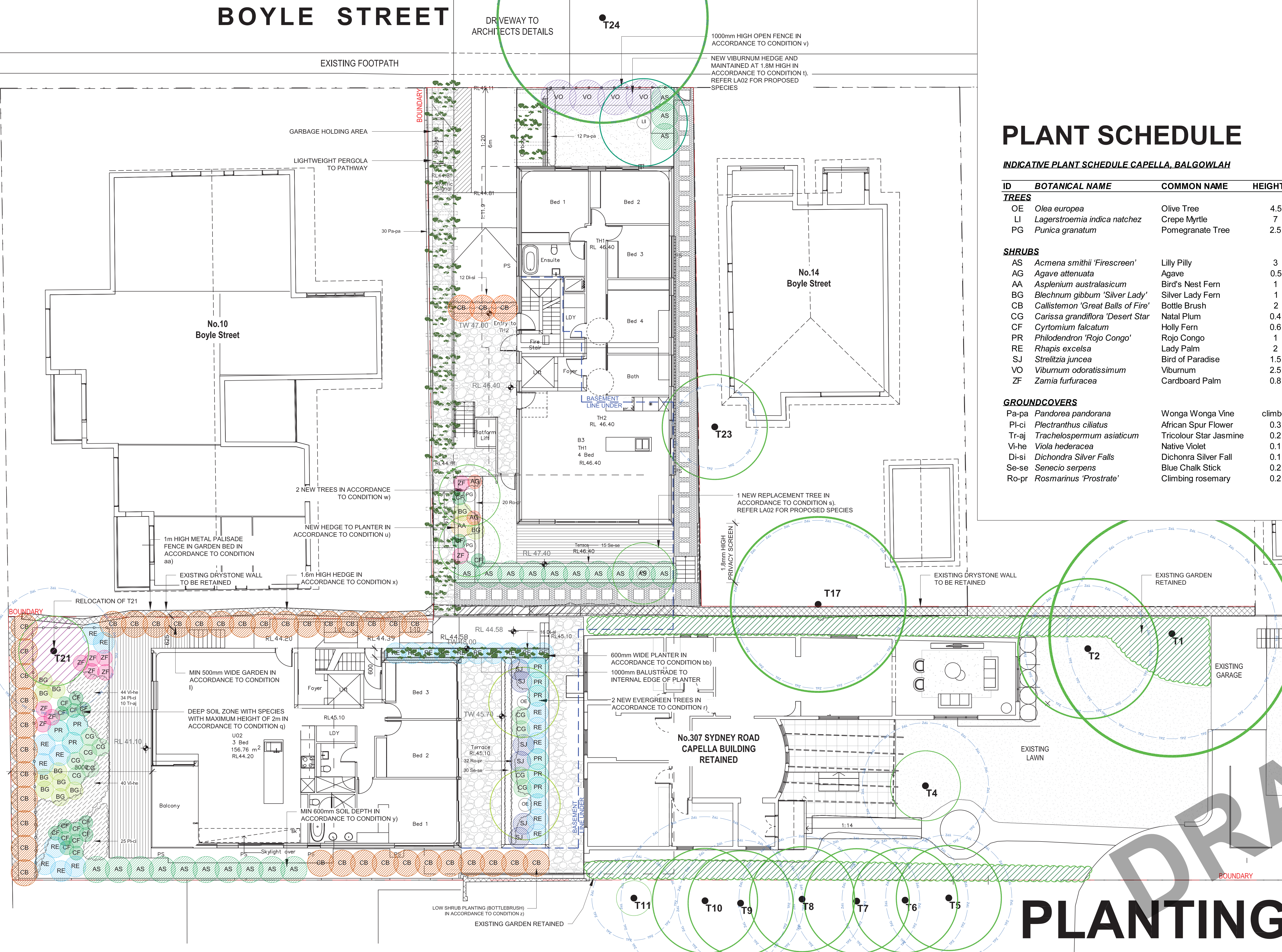
ID	BOTANICAL NAME	COMMON NAME	HEIGHT (m)	SIZE	QUANTITY
TREES					
OE	<i>Olea europaea</i>	Olive Tree	4.5	100L	2
LI	<i>Lagerstroemia indica natchez</i>	Crepe Myrtle	7	100L	1
PG	<i>Punica granatum</i>	Pomegranate Tree	2.5	75L	3

SHRUBS

AS	<i>Acmena smithii 'Firescreen'</i>	Lilly Pilly	3	45L	24
AG	<i>Agave attenuata</i>	Agave	0.5	300mm	2
AA	<i>Asplenium australasicum</i>	Bird's Nest Fern	1	300mm	1
BG	<i>Blechnum gibbum 'Silver Lady'</i>	Silver Lady Fern	1	300mm	11
CB	<i>Callistemon 'Great Balls of Fire'</i>	Bottle Brush	2	45L	40
CG	<i>Carissa grandiflora 'Desert Star'</i>	Natal Plum	0.4	300mm	10
CF	<i>Cytomium falcatum</i>	Holly Fern	0.6	300mm	17
PR	<i>Philodendron 'Rojo Congo'</i>	Rojo Congo	1	300mm	9
RE	<i>Rhapis excelsa</i>	Lady Palm	2	300mm	26
SJ	<i>Strelitzia juncea</i>	Bird of Paradise	1.5	300mm	6
VO	<i>Viburnum odoratissimum</i>	Viburnum	2.5	45L	4
ZF	<i>Zamia furfuracea</i>	Cardboard Palm	0.8	300mm	10

GROUNDCOVERS

Pa-pa	<i>Pandorea pandorana</i>	Wonga Wonga Vine	climber	150mm	42
Pl-ci	<i>Plectranthus ciliatus</i>	African Spur Flower	0.3	150mm	59
Tr-aj	<i>Trachelospermum asiaticum</i>	Tricolour Star Jasmine	0.2	150mm	10
Vi-he	<i>Viola hederacea</i>	Native Violet	0.1	150mm	84
Di-si	<i>Dichondra Silver Falls</i>	Dichondra Silver Fall	0.1	100mm	28
Se-se	<i>Senecio serpens</i>	Blue Chalk Stick	0.2	100mm	45
Ro-pr	<i>Rosmarinus 'Prostrate'</i>	Climbing rosemary	0.2	100mm	52



PLANTING PLAN

LEGEND

- SITE BOUNDARY
- EXISTING TREE RETAINED
- PROPOSED SHRUBS
- PROPOSED TREES
- PROPOSED GROUNDCOVERS

SCALE 1:100 @ A1  
0 2 4 8 12m

project: Capella 307 Sydney Rd, 12 Boyle St, Balgowlah  
client: Sun Property Group  
date: 14.06.2022  
revision: B  
drawn: CS  
checked: DMT

**TaylorBrammer**  
TAYLOR BRAMMER LANDSCAPE ARCHITECTS PTY LTD  
SYDNEY STUDIO  
218 Oxford Street, Woodlawn, NSW, 2025 E sydney@taylorbrammer.com.au  
Copyright of Taylor Brammer Landscape Architects Pty Ltd. AS/NZS 1851:2015

LA02



BOYLE STREET

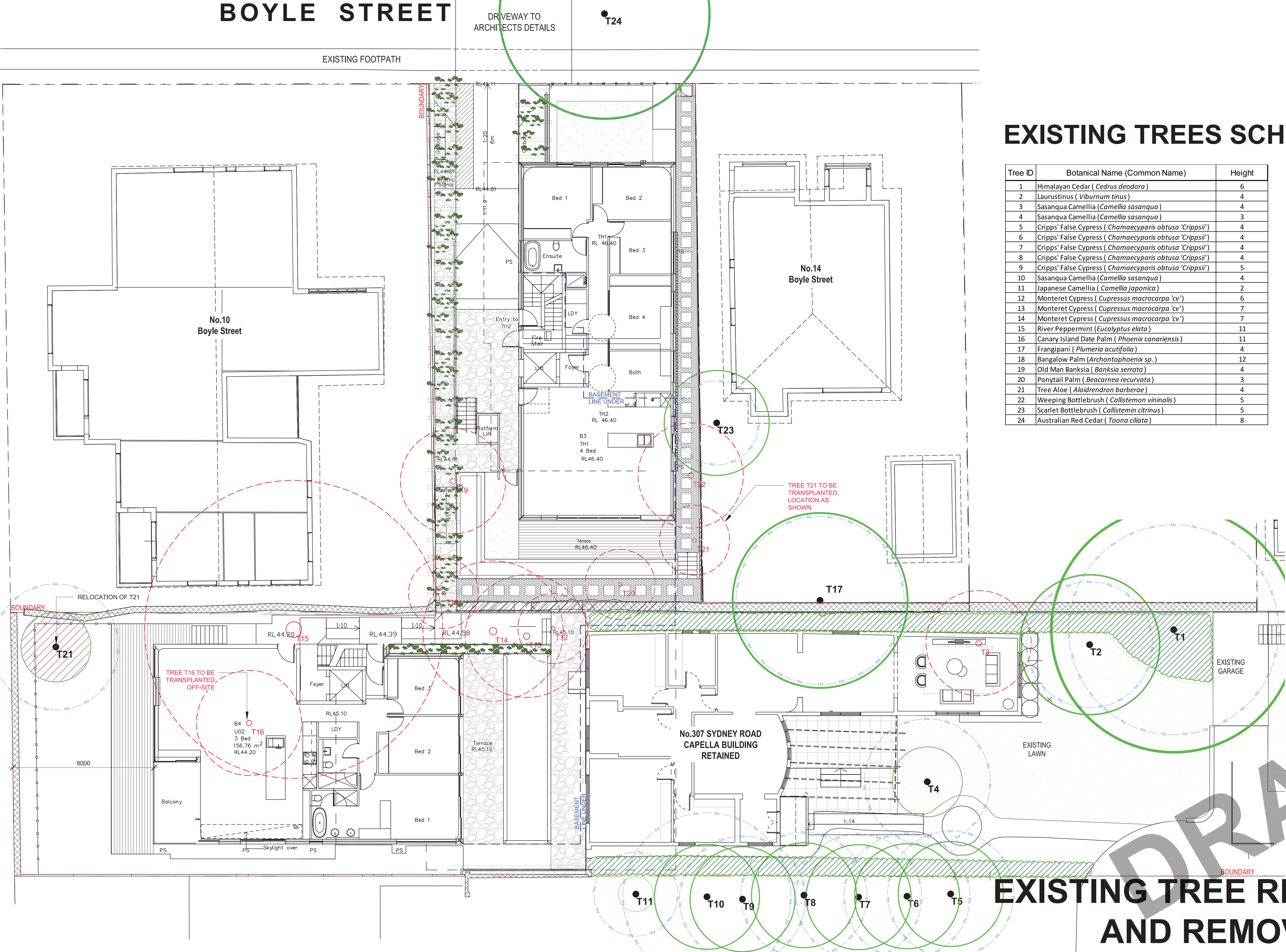
DRIVEWAY TO ARCHITECTS DETAILS

T24

EXISTING FOOTPATH

EXISTING TREES SCHEDULE

Tree ID	Botanical Name (Common Name)	Height
1	Himalayan Cedar ( <i>Cedrus deodora</i> )	6
2	Laurustinus ( <i>Viburnum tinus</i> )	4
3	Sasanqua Camellia ( <i>Camellia sasanqua</i> )	4
4	Sasanqua Camellia ( <i>Camellia sasanqua</i> )	3
5	Cripps' False Cypress ( <i>Chamaecyparis obtusa</i> 'Crippsii' )	4
6	Cripps' False Cypress ( <i>Chamaecyparis obtusa</i> 'Crippsii' )	4
7	Cripps' False Cypress ( <i>Chamaecyparis obtusa</i> 'Crippsii' )	4
8	Cripps' False Cypress ( <i>Chamaecyparis obtusa</i> 'Crippsii' )	4
9	Cripps' False Cypress ( <i>Chamaecyparis obtusa</i> 'Crippsii' )	5
10	Sasanqua Camellia ( <i>Camellia sasanqua</i> )	4
11	Japanese Camellia ( <i>Camellia japonica</i> )	2
12	Monteret Cypress ( <i>Cupressus macrocarpa</i> 'cv' )	6
13	Monteret Cypress ( <i>Cupressus macrocarpa</i> 'cv' )	7
14	Monteret Cypress ( <i>Cupressus macrocarpa</i> 'cv' )	7
15	River Peppermint ( <i>Eucalyptus elata</i> )	11
16	Canary Island Date Palm ( <i>Phoenix canariensis</i> )	11
17	Frangipani ( <i>Plumeria acutifolia</i> )	4
18	Bangalow Palm ( <i>Archontophoenix</i> sp. )	12
19	Old Man Banksia ( <i>Banksia serrata</i> )	4
20	Ponytail Palm ( <i>Beccarnea recurvata</i> )	3
21	Tree Aloe ( <i>Alaidrendron barberae</i> )	4
22	Weeping Bottlebrush ( <i>Callistemon vinalis</i> )	5
23	Scarlet Bottlebrush ( <i>Callistemin citrinus</i> )	5
24	Australian Red Cedar ( <i>Toona ciliata</i> )	8



EXISTING TREE RETENTION AND REMOVAL PLAN



SCALE 1:100 @ A1  
0 2 4 8 12m

LEGEND

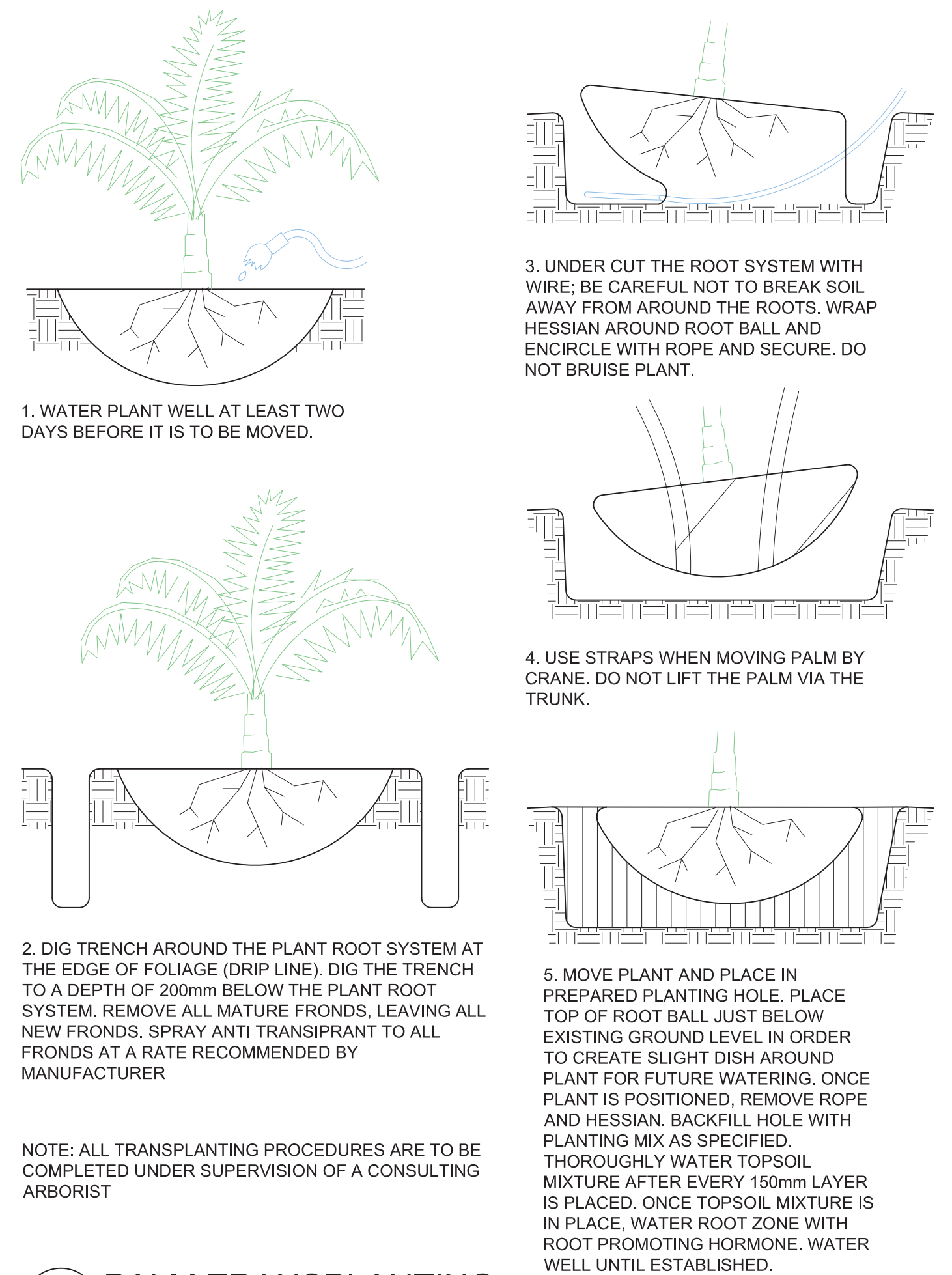
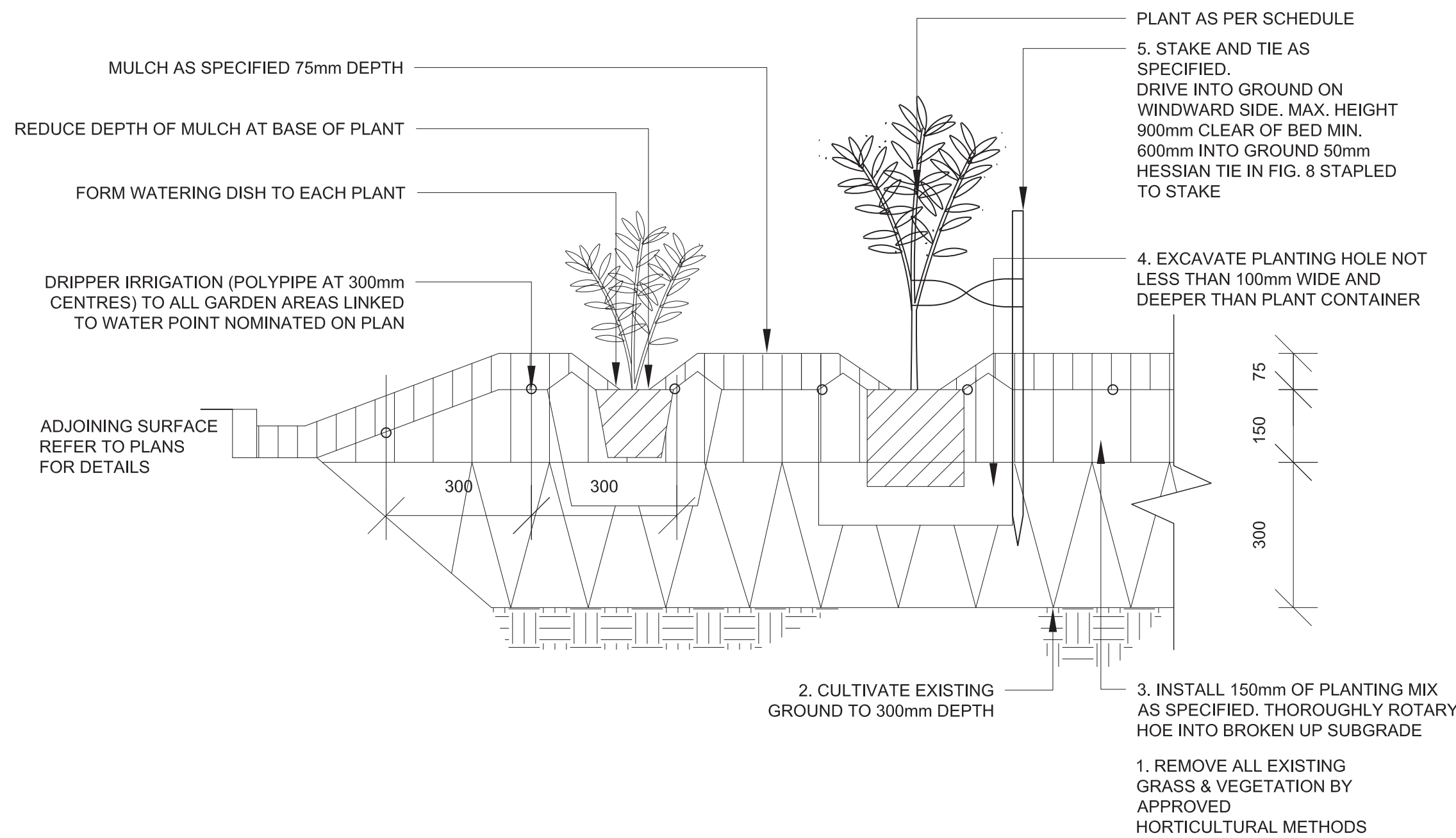
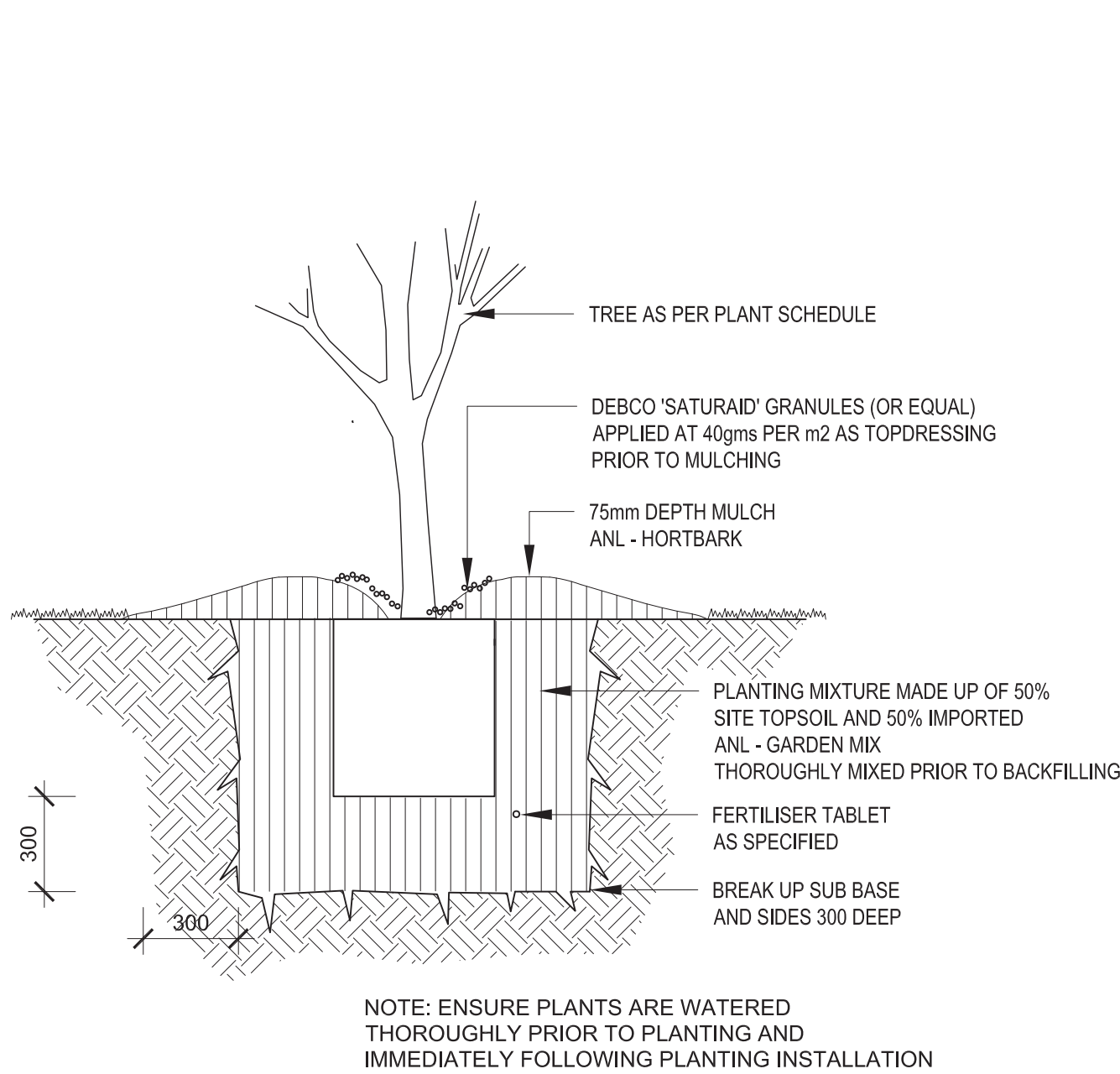
- SITE BOUNDARY
- NEW TRANSPLANT LOCATION OF EXISTING TREE
- EXISTING TREE RETAINED
- EXISTING TREE REMOVED

project: Capella 307 Sydney Rd, 12 Boyle St, Balgowlah  
client: Sun Property Group  
date: 14.06.2022  
revision: A  
drawn: CS  
checked: DMT

**TaylorBrammer**  
TAYLOR BRAMMER LANDSCAPE ARCHITECTS PTY LTD  
SYDNEY STUDIO  
210 Oxford Street Woolahra, NSW 2025 E sydney@taylorbrammer.com.au T 61 2 9387 8855  
Copyright of Taylor Brammer Landscape Architects Pty Ltd. ABN 61 098 724 988

LA03

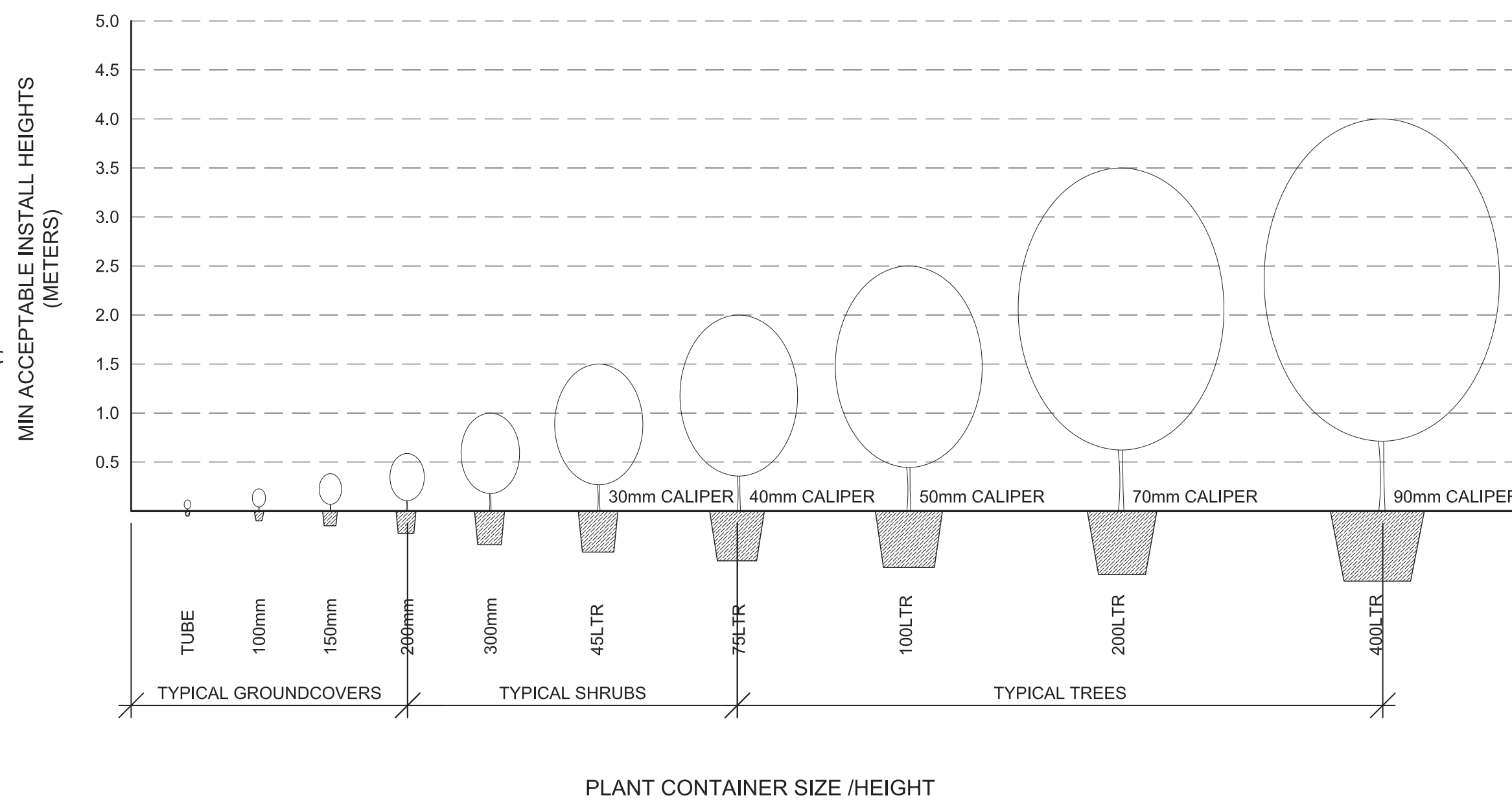
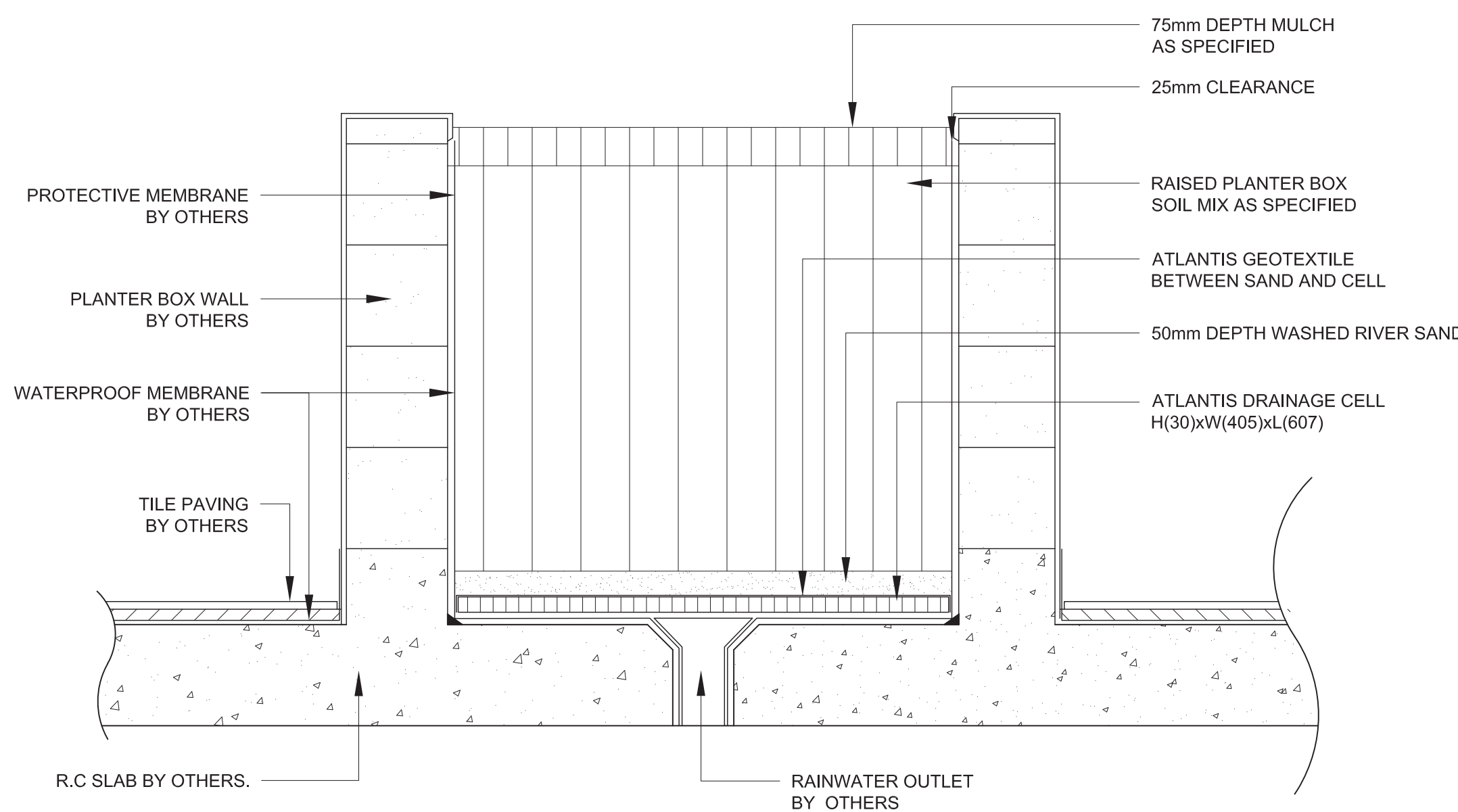




1 TREE PLANTING  
TYPICAL SECTION 1:20

2 MASS PLANTING BED (DRIPPER IRRIGATION DETAIL)  
TYPICAL SECTION 1:10

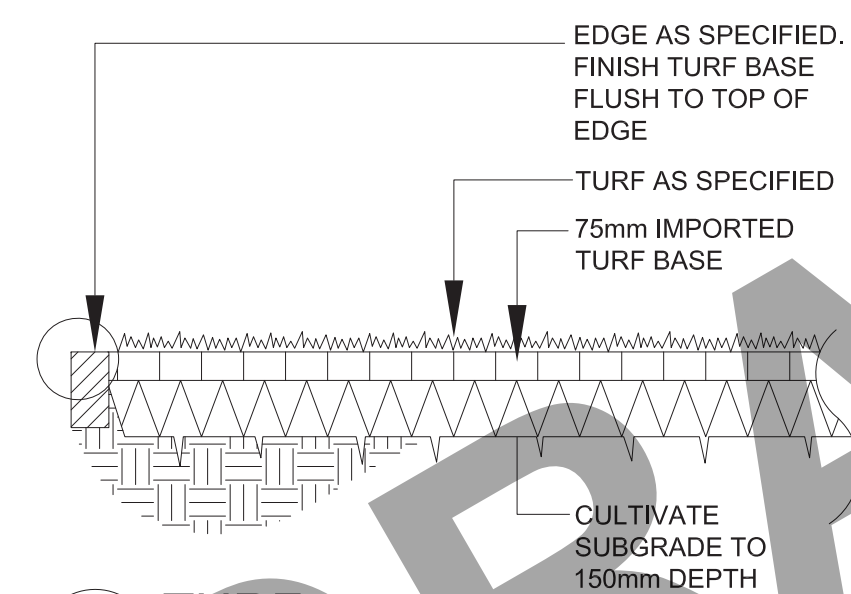
3 PALM TRANSPLANTING



4 RAISED PLANTER BOX  
TYPICAL SECTION

5 NEW PLANTING MINIMUM SIZES  
SECTION 1:50

GENERAL TREE SUPPLY AND QUALITY:  
FOLLOW THE GUIDANCE GIVEN IN NATSPEC GUIDE: SPECIFYING TREES – A GUIDE TO ASSESSMENT OF TREE QUALITY (CLARK R. 2003).



6 TURF  
SECTION 1:20

DETAILS