

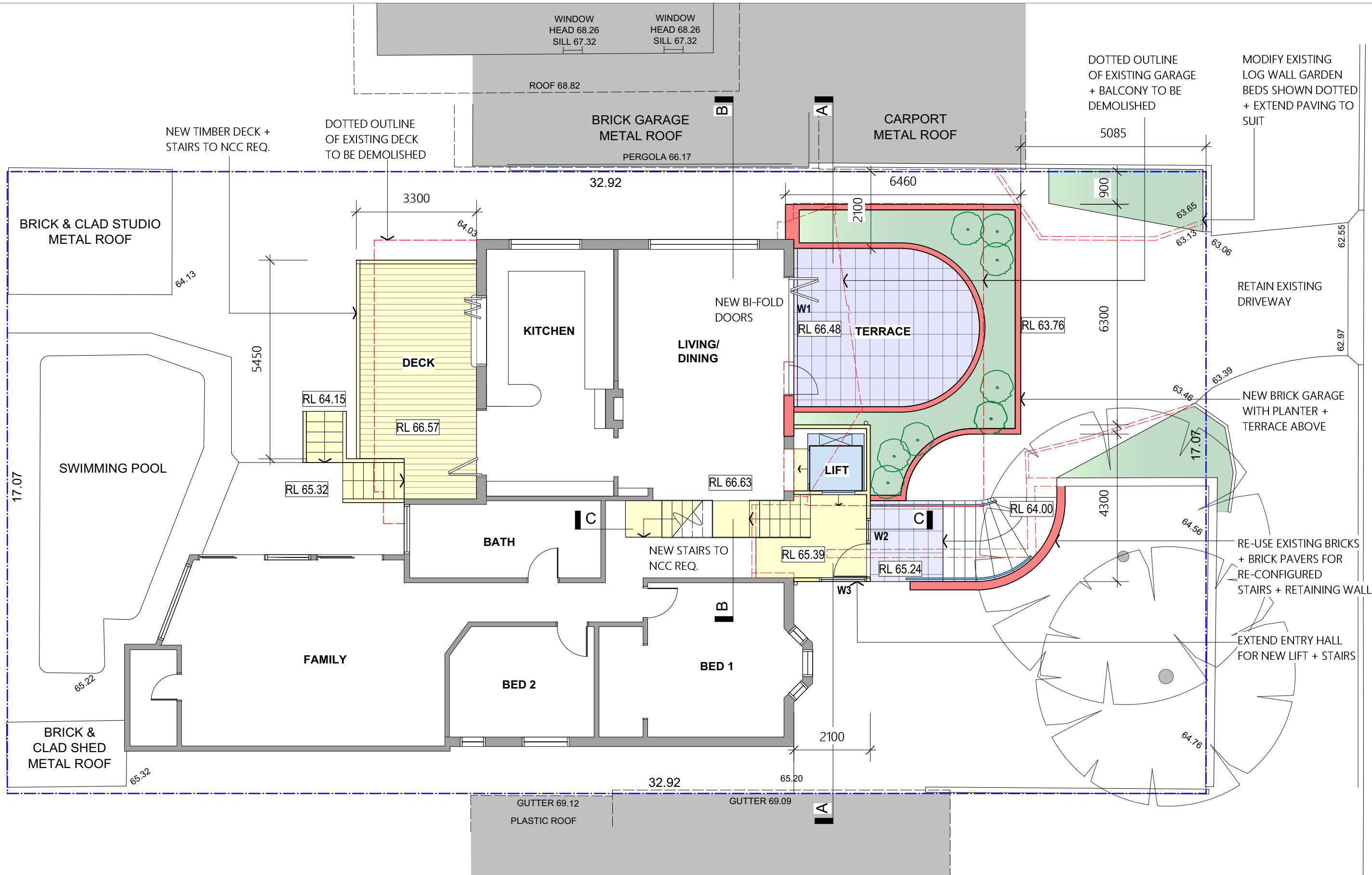
C H E S T E R P L A C E

ISSUE	DATE	REVISION
A	07.09.2021	DA

DWG

DEMOLITION PLAN

PROJECT ALTERATIONS + ADDITIONS TO 9 CHESTER PLACE, NARRAWEENA (LOT 4 DP 211930)		PROJECT # 2103	
John Greenwood + Associates Pty Ltd ARCHITECTS PROJECT MANAGERS SHADE CONSULTANTS		DWG # DEM	
Suite 1, 340 Darling Street, Balmain NSW 2041 Australia T: (02) 9818 2177 F: (02) 9818 3461 E: design@jgarchitects.com.au		Nominated Architect Reg. No. 7579 ABN 69 001 345 820	
SCALE @ A3 1:100@A3		DATE # SEP 2021	
		ISSUE A	

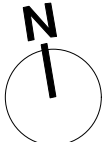


CHESTER PLACE

ISSUE	DATE	REVISION
A	07.09.2021	DA

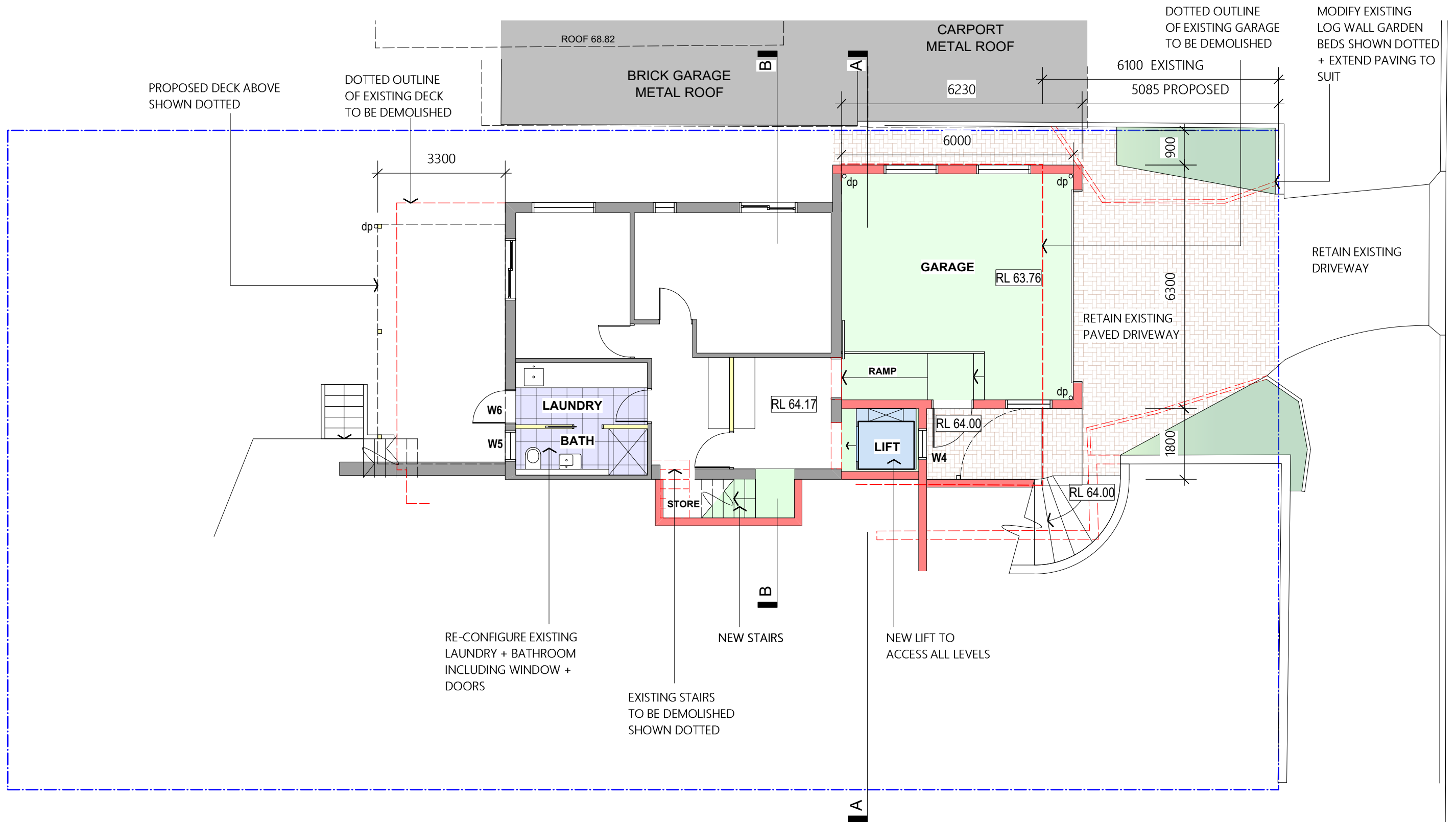
DWG

GROUND FLOOR PLAN



PROJECT ALTERATIONS + ADDITIONS TO 9 CHESTER PLACE, NARRAWEENA (LOT 4 DP 211930) John Greenwood + Associates Pty Ltd ARCHITECTS PROJECT MANAGERS SHADE CONSULTANTS Suite 1, 340 Darling Street, Balmain NSW 2041 Australia T: (02) 9818 2177 F: (02) 9818 3461 E: design@jgarchitects.com.au			Nominated Architect Reg. No. 7579 ABN 69 001 345 820	
SCALE @ A3 1:100@A3		DATE # SEP 2021		ISSUE A

PROJECT # 2103
DWG # DA02



C H E S T E R P L A C E

ISSUE	DATE	REVISION
A	07.09.2021	DA

DWG

LOWER GROUND FLOOR PLAN

NEW STAIRS

EXISTING STAIRS TO BE DEMOLISHED SHOWN DOTTED

RE-CONFIGURE EXISTING LAUNDRY + BATHROOM INCLUDING WINDOW + DOORS

NEW LIFT TO ACCESS ALL LEVELS

NEW STAIRS

EXISTING STAIRS TO BE DEMOLISHED SHOWN DOTTED

RE-CONFIGURE EXISTING LAUNDRY + BATHROOM INCLUDING WINDOW + DOORS

PROJECT

ALTERATIONS + ADDITIONS TO 9 CHESTER PLACE, NARRAWEENA (LOT 4 DP 211930)

John Greenwood + Associates Pty Ltd

ARCHITECTS PROJECT MANAGERS SHADE CONSULTANTS

Suite 1, 340 Darling Street, Balmain NSW 2041 Australia
T: (02) 9818 2177 F: (02) 9818 3461 E: design@jgarchitects.com.au

Nominated Architect
Reg. No. 7579

ABN 69 001 345 820

SCALE @ A3
1:100@A3

DATE #
SEP 2021

PROJECT #

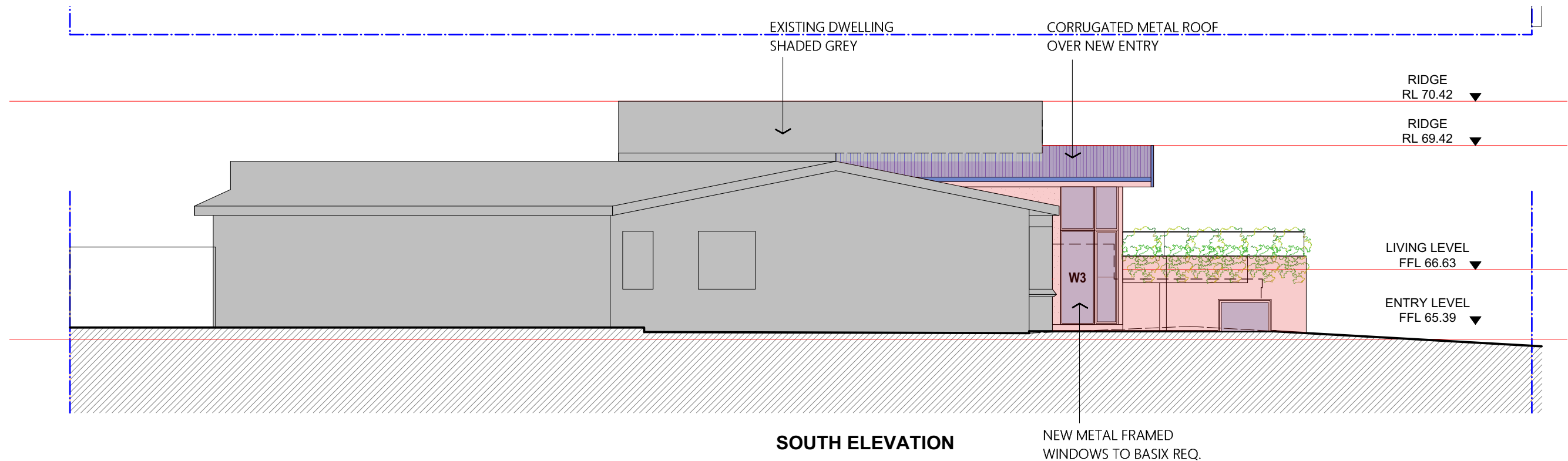
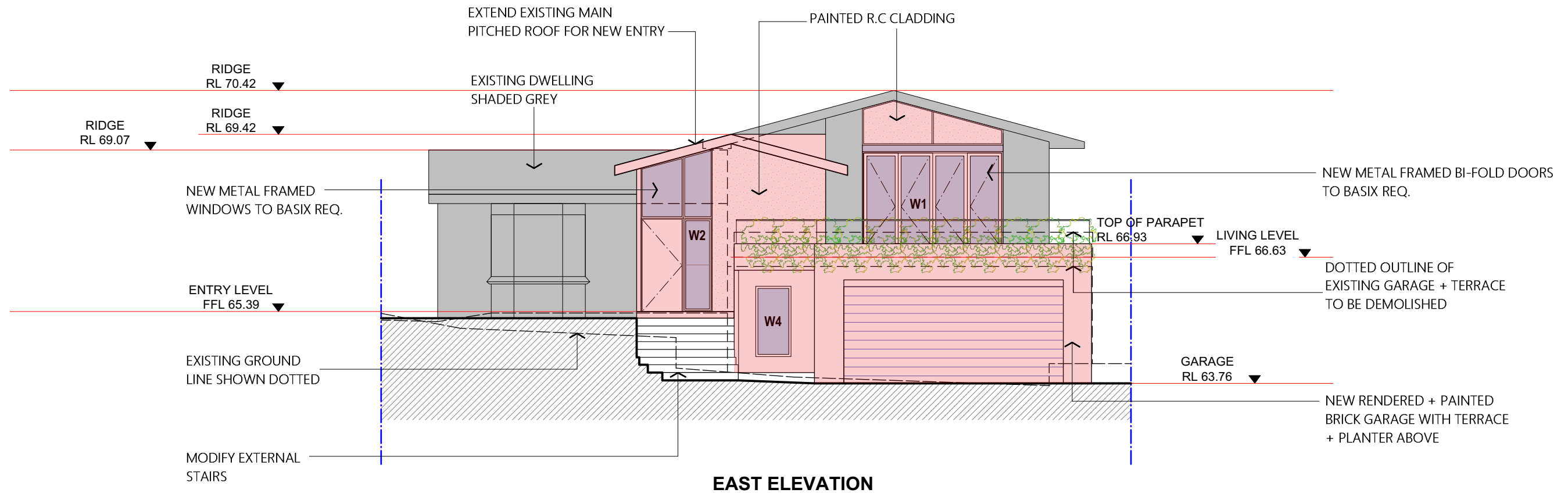
2103

DWG #

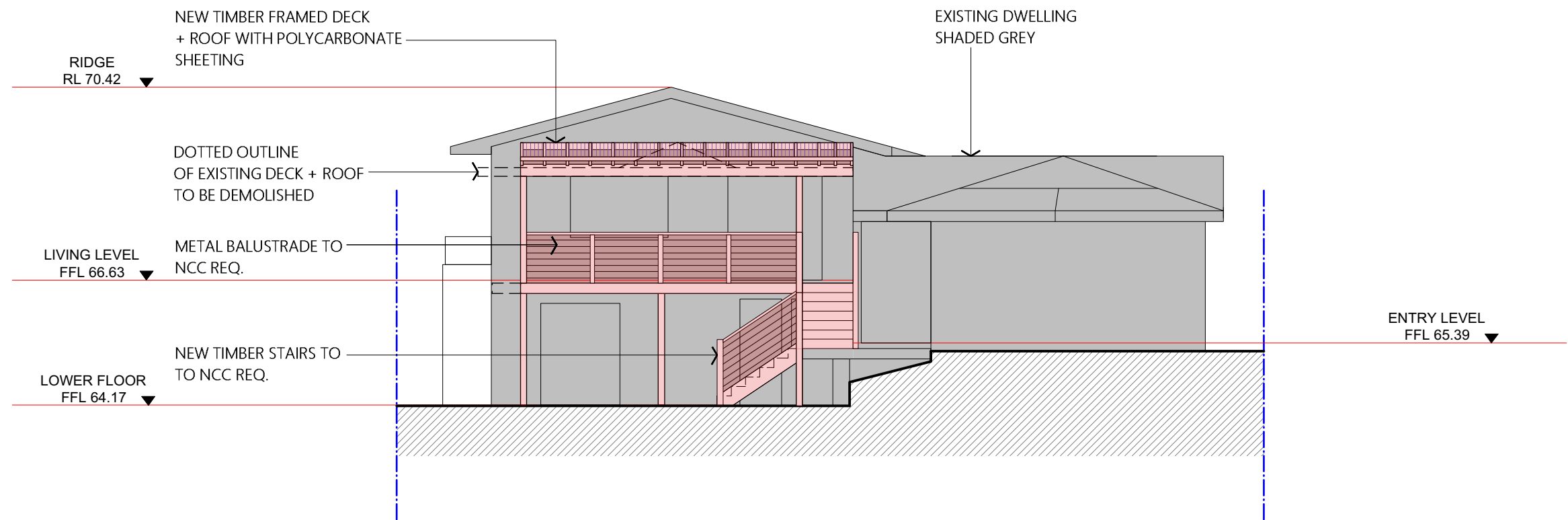
DA03

ISSUE

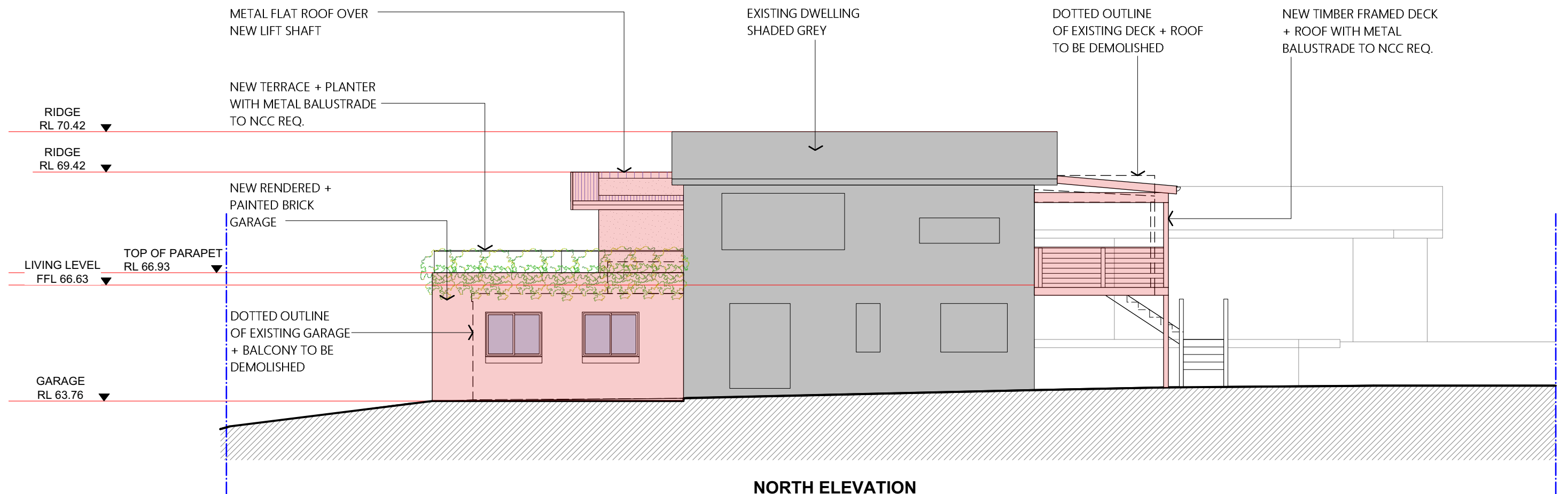
A



ISSUE	DATE	REVISION	DWG	PROJECT	PROJECT #	
A	07.09.2021	DA	ELEVATIONS	ALTERATIONS + ADDITIONS TO 9 CHESTER PLACE, NARRAWEENA (LOT 4 DP 211930)	2103	
John Greenwood + Associates Pty Ltd				Nominated Architect	DWG #	
ARCHITECTS PROJECT MANAGERS SHADE CONSULTANTS				Reg. No. 7579 <small>ABN 69 001 345 820</small>	DA04	
Suite 1, 340 Darling Street, Balmain NSW 2041 Australia T: (02) 9818 2177 F: (02) 9818 3461 E: design@jgarchitects.com.au				SCALE @ A3 1:100@A3	DATE # SEP 2021	ISSUE A

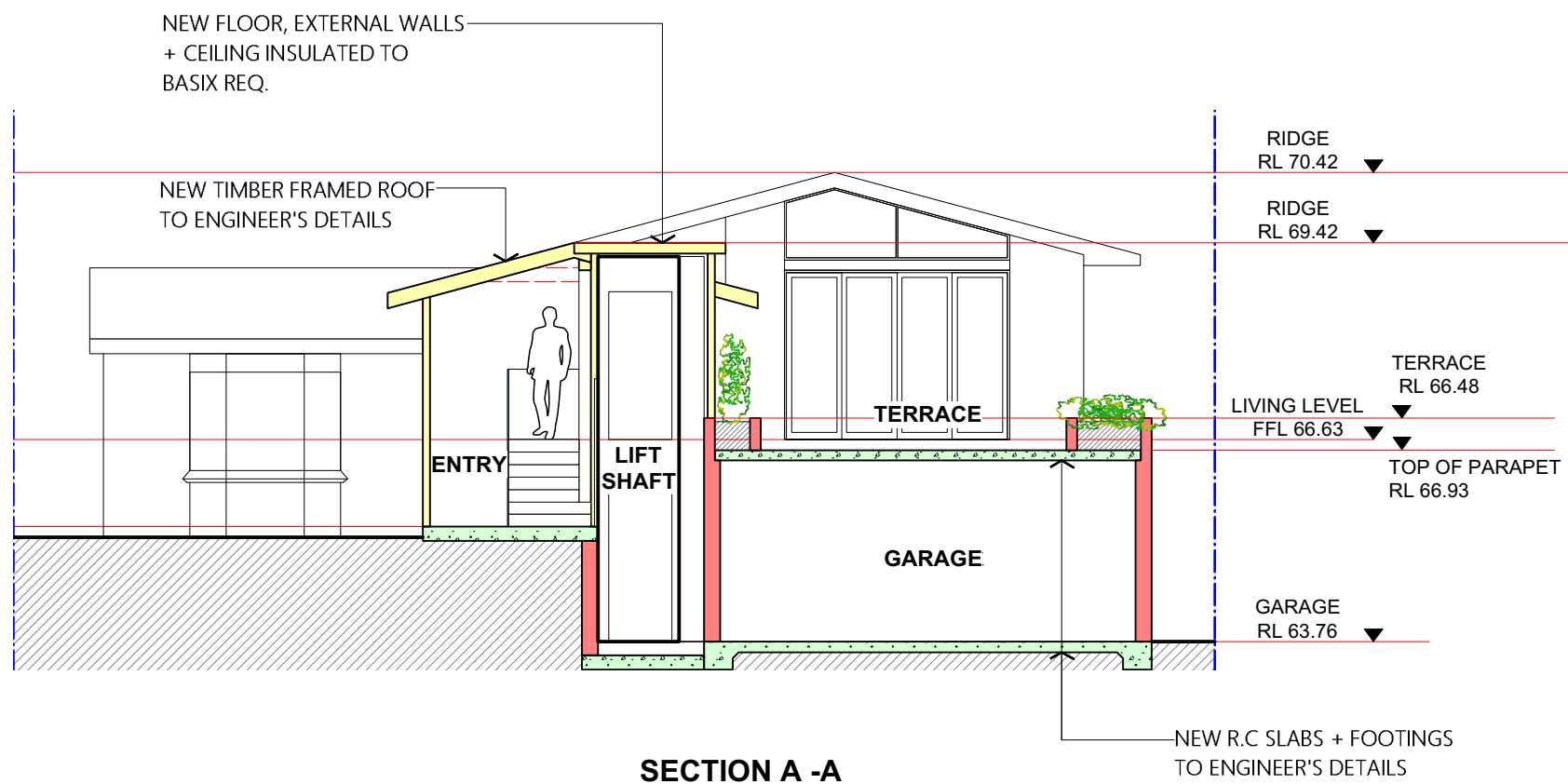
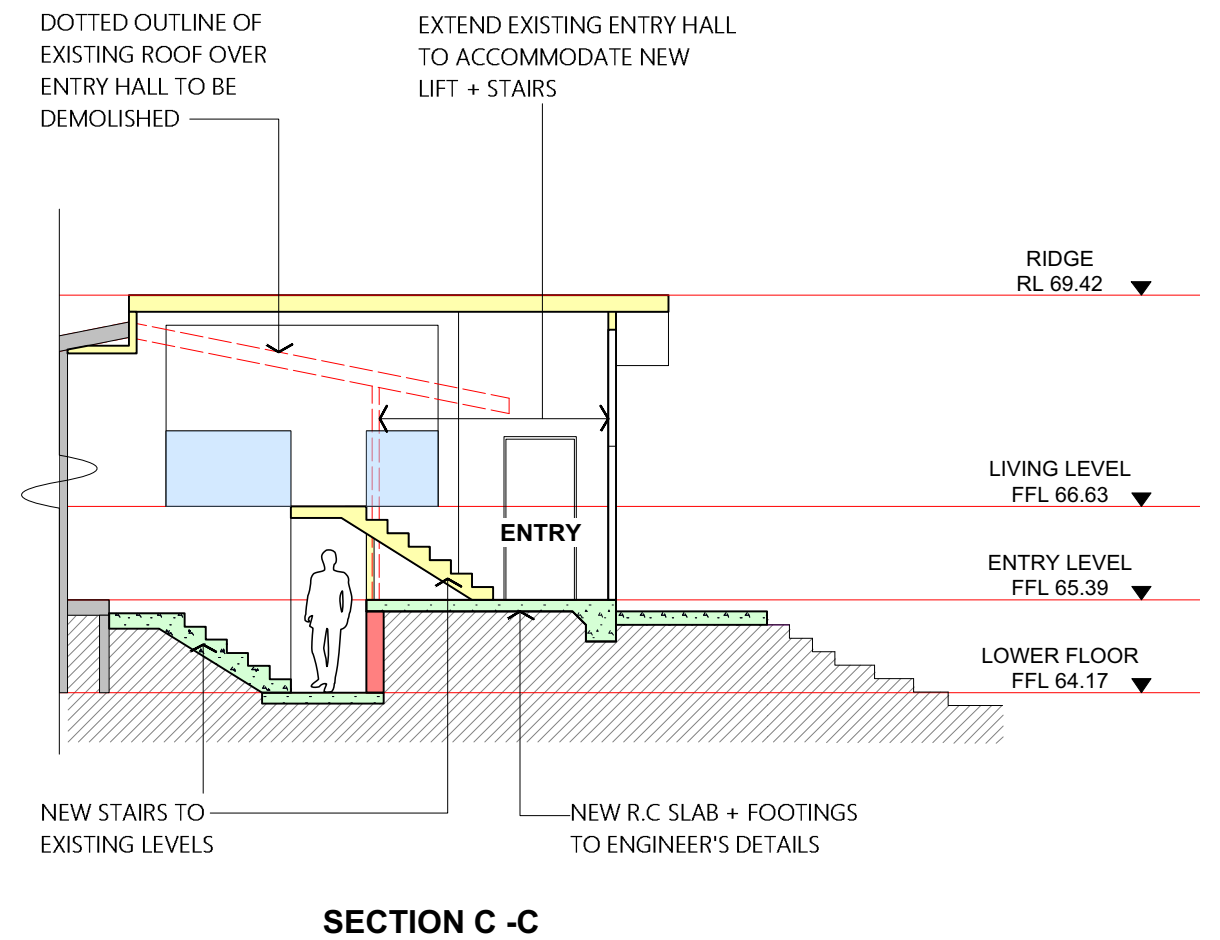
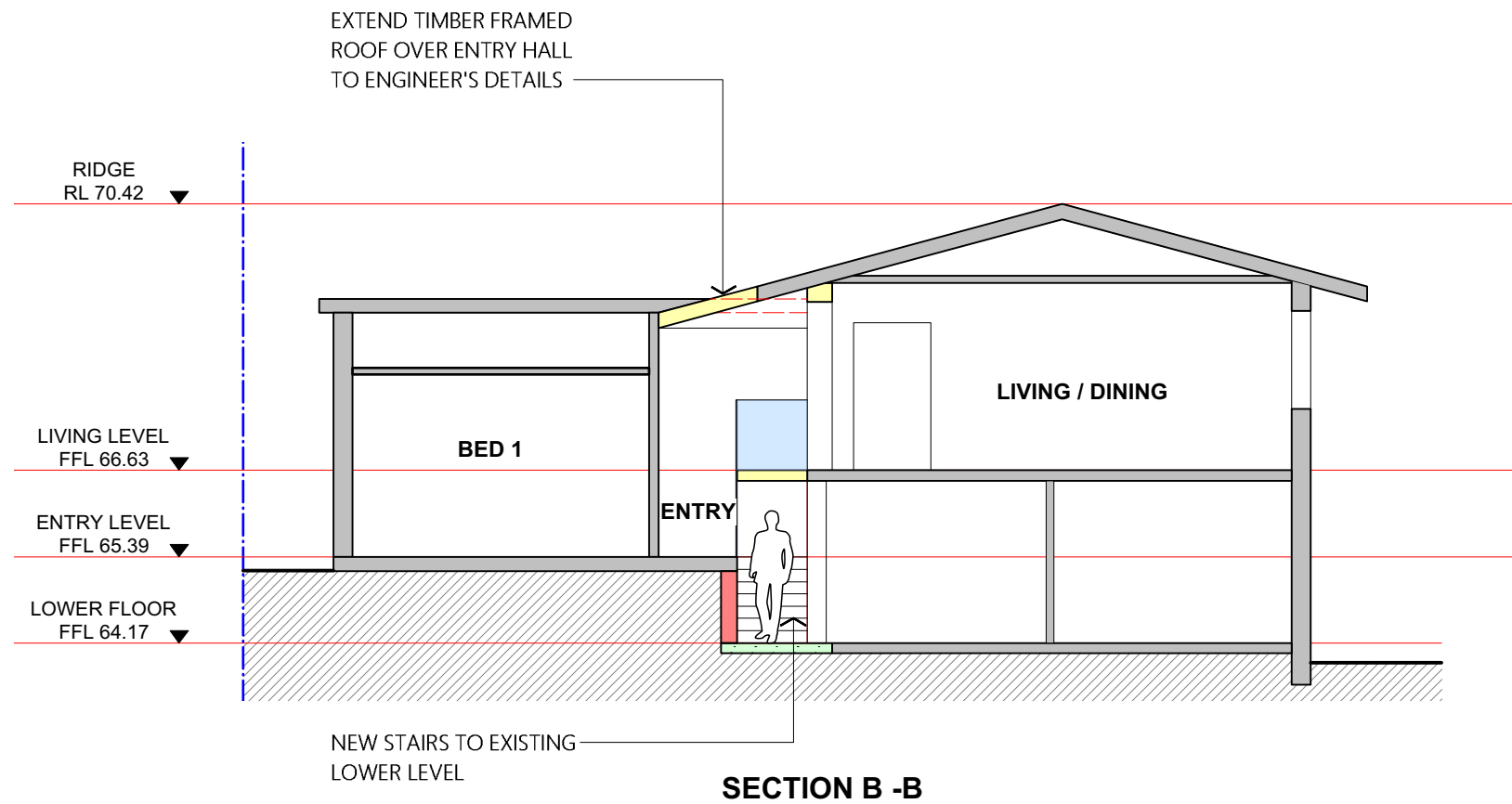


WEST ELEVATION



NORTH ELEVATION

ISSUE		DATE	REVISION	DWG	PROJECT				PROJECT #
A		07.09.2021	DA	ELEVATIONS	ALTERATIONS + ADDITIONS TO 9 CHESTER PLACE, NARRAWEENA (LOT 4 DP 211930)				2103
					John Greenwood + Associates Pty Ltd		Nominated Architect		DWG #
					ARCHITECTS PROJECT MANAGERS SHADE CONSULTANTS		Reg. No. 7579		DA05
					Suite 1, 340 Darling Street, Balmain NSW 2041 Australia T: (02) 9818 2177 F: (02) 9818 3461 E: design@jgarchitects.com.au		SCALE @ A3 1:100@A3	DATE # SEP 2021	ISSUE
								A	



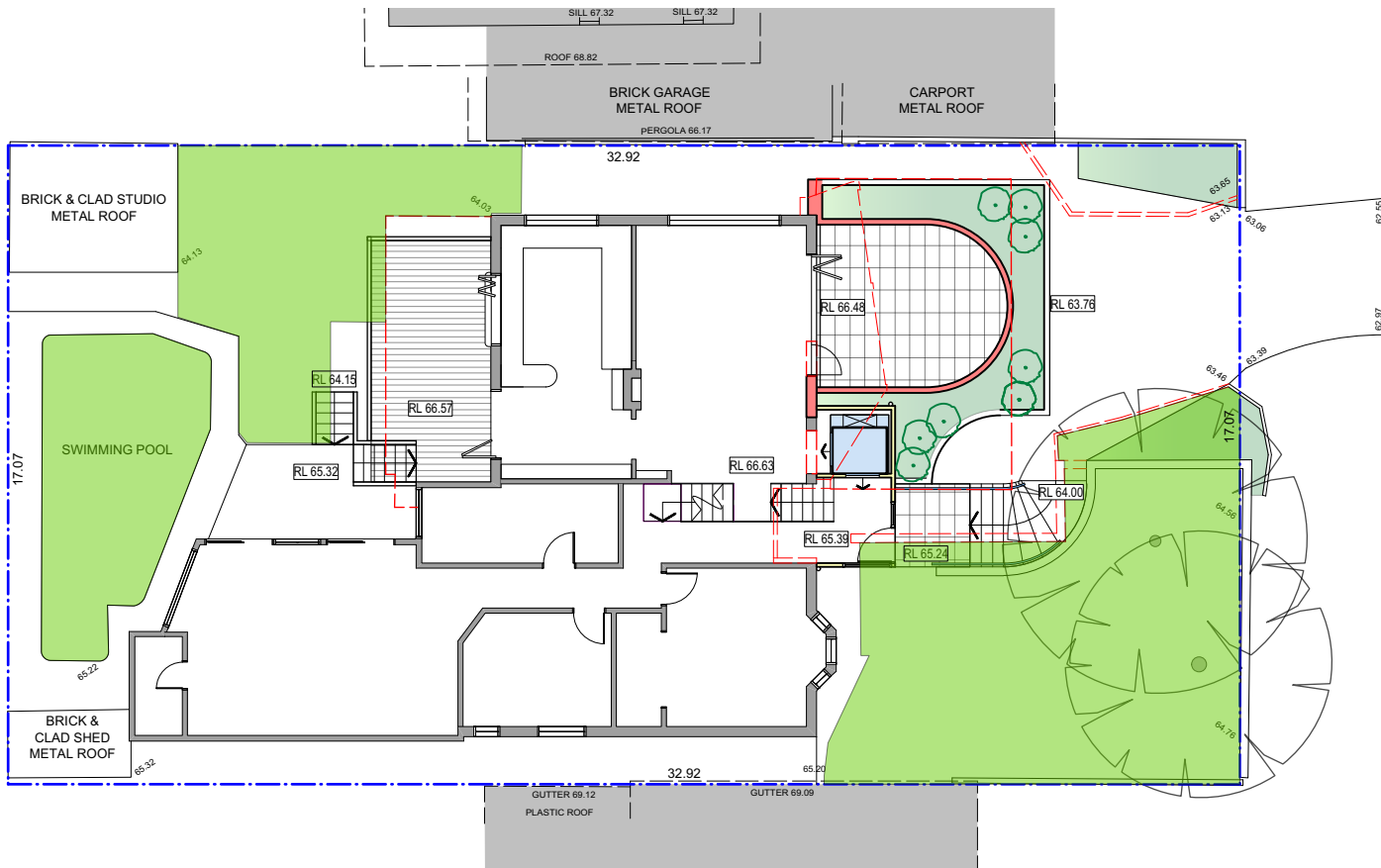
BASIX COMMITMENTS

Construction	Additional insulation required (R-value)	Other specifications
suspended floor with enclosed subfloor: framed (R0.7).	R0.60 (down) (or R1.30 including construction)	
external wall: framed (weatherboard, fibro, metal clad)	R1.30 (or R1.70 including construction)	
raked ceiling, pitched/skillion roof: framed	ceiling: R2.24 (up), roof: foil backed blanket (55 mm)	medium (solar absorptance 0.475 - 0.70)

Windows and glazed doors glazing requirements

Window / door no.	Orientation	Area of glass inc. frame (m2)	Overshadowing Height (m)	Overshadowing Distance (m)	Shading device	Frame and glass type
W1	E	8	0	0	awning (adjustable) >=900 mm	improved aluminium, single pyrolytic low-e, (U-value: 4.48, SHGC: 0.46)
W2	E	4	0	0	eave/verandah/pergola/balcony >=600 mm	improved aluminium, single pyrolytic low-e, (U-value: 4.48, SHGC: 0.46)
W3	W	4	0	0	eave/verandah/pergola/balcony >=600 mm	improved aluminium, single pyrolytic low-e, (U-value: 4.48, SHGC: 0.46)
W4	E	1	0	0	eave/verandah/pergola/balcony >=900 mm	improved aluminium, single clear, (U-value: 6.44, SHGC: 0.75)
W5	W	1	0	0	eave/verandah/pergola/balcony >=900 mm	improved aluminium, single clear, (U-value: 6.44, SHGC: 0.75)
W6	W	1.9	0	0	eave/verandah/pergola/balcony >=900 mm	improved aluminium, single clear, (U-value: 6.44, SHGC: 0.75)

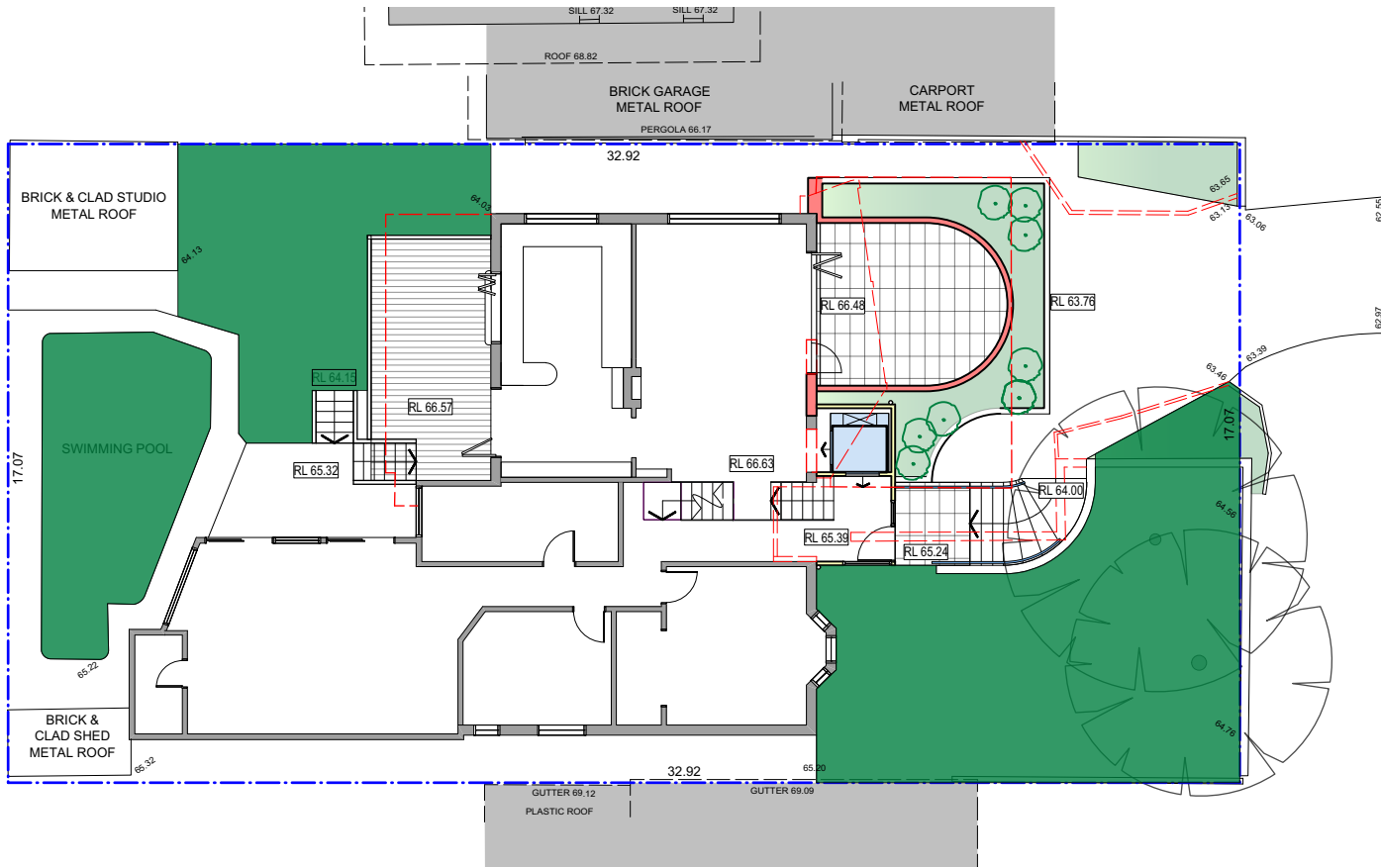
ISSUE	DATE	REVISION	DWG	PROJECT	PROJECT #
A	07.09.2021	DA	SECTIONS	ALTERATIONS + ADDITIONS TO 9 CHESTER PLACE, NARRAWEENA (LOT 4 DP 211930)	2103
				John Greenwood + Associates Pty Ltd ARCHITECTS PROJECT MANAGERS SHADE CONSULTANTS	DWG # DA06
				Nominated Architect Reg. No. 7579 ABN 69 001 345 820	ISSUE A
				Suite 1, 340 Darling Street, Balmain NSW 2041 Australia T: (02) 9818 2177 F: (02) 9818 3461 E: design@jgarchitects.com.au	SCALE @ A3 1:100@A3 DATE # SEP 2021



C
H
E
S
T
E
R

P
L
A
C
E

EXISTING LANDSCAPED AREA: 155m²



C
H
E
S
T
E
R

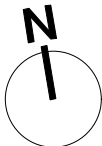
P
L
A
C
E

PROPOSED LANDSCAPED AREA: 152m²

ISSUE	DATE	REVISION
A	07.09.2021	DA

DWG

LANDSCAPE AREA CALCULATIONS



PROJECT ALTERATIONS + ADDITIONS TO 9 CHESTER PLACE, NARRAWEENA (LOT 4 DP 211930)			PROJECT # 2103	
John Greenwood + Associates Pty Ltd ARCHITECTS PROJECT MANAGERS SHADE CONSULTANTS			DWG # DA07	
Suite 1, 340 Darling Street, Balmain NSW 2041 Australia T: (02) 9818 2177 F: (02) 9818 3461 E: design@jgarchitects.com.au			ISSUE A	
Nominated Architect Reg. No. 7579 <small>ABN 69 001 345 820</small>		SCALE @ A3 1:100@A3	DATE # SEP 2021	