



1 CCTV Pty Ltd
Po Box 8, Menangle NSW 2564
Tel. 0450 251 971
Admin@1cctv.com.au

Table of Contents

Project name	Project number	Project date
3 Fazzolari avenue_ mona vale 2025_07_17		17/07/2025

Section Profile	P-1
Section: 1; SPP56061 - SPP56047	1



1 CCTV Pty Ltd
Po Box 8, Menangle NSW 2564
Tel. 0450 251 971
Admin@1cctv.com.au

Section Profile

Project name 3 Fazzolari avenue_ mona vale 2025_07_17	Project number	Project date 17/07/2025
--	----------------	----------------------------

Section No.	US MH	DS MH	Date of inspection	Address/Location	Material	Inspected Length [m]	Pipe Asset ID
1	SPP56061	SPP56047	17/07/2025	3 Fazzolari avenue	Concrete reinforced	53.71	SPI50195

1 x 450 = 53.71 Section Length [m] (53.71 Inspected Length [m])

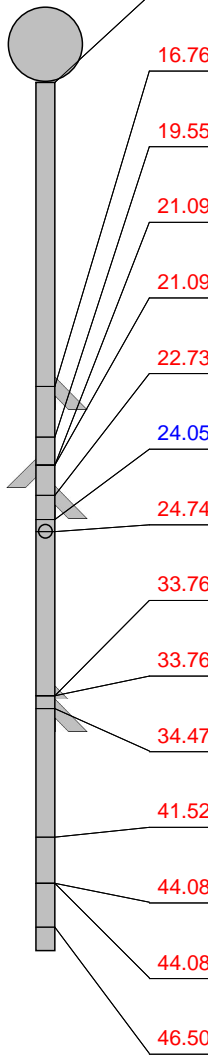
Total: 1 = 53.71 Section Length [m] (53.71 Inspected Length [m])



Section Inspection - 17/07/2025 - SPI50195

Date of inspection 17/07/2025	Time of inspection 7:38 AM	Land ownership Not known	Pipe Asset ID SPI50195	Nr. 1
Project name 3 Fazzolari avenue_ mona vale 2025_07_17	Contractor's Job Number 17	Coding Standard WSA 2020	Name of operator Caleb	Job ID 20251554

Suburb mona vale	US MH SPP56061	Unit Length 0.00 m
Address 3 Fazzolari avenue	Direction Upstream	GIS length 0.00 m
Location type Under a permanent building (Built over)	DS MH SPP56047	Inspected Length [m] 53.71 m
Operation Gravity	Use A drain designed to carry only surface water	Year Laid
Profile 450mm	Purpose of inspection Routine inspection of condition	
Lining material	Method of inspection Inspection by means of a remotely controlled television camera passed through the	
Lining type	Precipitation	
Dia/Height 450 mm	Cleaning The conduit was not cleaned prior to the inspection	
Material Concrete reinforced	Flow control No measures taken	
General comment		

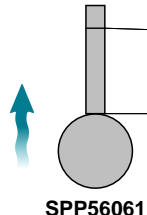
1:416	m+	Code	Observation Text	MPEG	Photo	Grade
SPP56047	0.00	STGJP	Start node, grated junction pit, Nodename:, SPP56047	00:00:00		
	16.76	CNOU	Connection, unlined, connection appears to be open, Height/Diameter (mm): 150 at 10 o'clock	00:05:48	SPI50195_c4b506c8-7b9a-4194	
	19.55	RT	Tap roots, reduction in cross sectional area, Obstruction: 10%, at joint at 4 o'clock	00:06:56	SPI50195_8f4c3fff-8801-47bd-8	
	21.09	CNOU	Connection, unlined, connection appears to be open, Height/Diameter (mm): 150 at 3 o'clock	00:07:33	SPI50195_c25cf139-651f-40a0-9	
	21.09	SCAM	The damage has extended sufficiently for several pieces of large aggregate at 3 o'clock	00:07:38	SPI50195_c70b843b-77fa-43cd-	3
	22.73	CNOU	Connection, unlined, connection appears to be open, Height/Diameter (mm): 150 at 10 o'clock	00:08:33	SPI50195_65d6a7c9-8581-4621	
	24.05	GC	General comment / Approx location of boundary	00:08:58	SPI50195_beee9a99-f10a-408c-	
	24.74	CNOU	Connection, unlined, connection appears to be open, Height/Diameter (mm): 150 at 12 o'clock	00:09:33	SPI50195_a12b57b7-9d0c-472e	
	33.76	CNOU	Connection, unlined, connection appears to be open, Height/Diameter (mm): 150 at 10 o'clock	00:12:24	SPI50195_c57dc26f-6edf-4e3e-9	
	33.76	SCRC	Surface damage concrete, reinforcement is exposed and corroded at 10 o'clock	00:12:31	SPI50195_9dd911e3-e750-4b59	3
	34.47	CNOU	Connection, unlined, connection appears to be open, Height/Diameter (mm): 150 at 10 o'clock	00:13:13	SPI50195_8ea5d1ed-199d-4735	
	41.52	LL	The conduit curves to the left	00:15:15	SPI50195_ee54ead3-a01f-40a8-	
	44.08	CL	Longitudinal cracking, at joint, width: 0.1mm at 3 o'clock	00:16:22	SPI50195_6251ddc9-0100-437a	1
	44.08	CL	Longitudinal cracking, at joint, width: 0.1mm at 10 o'clock	00:16:39	SPI50195_2649fa71-106a-47f7-	1
	46.50	CC	Circumferential cracking, width: 0.5mm from 3 o'clock to 5 o'clock	00:17:29	SPI50195_95d6b962-df2b-4011-	1



1 CCTV Pty Ltd
Po Box 8, Menangle NSW 2564
Tel. 0450 251 971
Admin@1cctv.com.au

Section Inspection - 17/07/2025 - SPI50195

Date of inspection 17/07/2025	Time of inspection 7:38 AM	Land ownership Not known	Pipe Asset ID SPI50195	Nr. 1
Project name 3 Fazzolari avenue_ mona vale 2025_07_17	Contractor's Job Number	Coding Standard WSA 2020	Name of operator Caleb	Job ID 20251554

1:416	m+	Code	Observation Text	MPEG	Photo	Grade
	49.02	DEC	The material deposited is hard or compacted e.g. concrete from 5 o'clock to 7 o'clock, Obstruction: 10%	00:18:24	SPI50195_3a4345c3-ecdb-46d9	3
	53.71	FHGJP	Finish node, grated junction pit, Nodename:, SPP56061	00:19:56		

Construction Features					Miscellaneous Features				
Structural Defects					Service & Operational Defects				
STR No. Def	STR Peak	STR Mean	STR Total	STR Grade	SER No. Def	SER Peak	SER Mean	SER Total	SER Grade
5	30.0	1.0	53.0	3	1	10.0	0.2	10.0	3



Section Pictures - 17/07/2025 - SPI50195

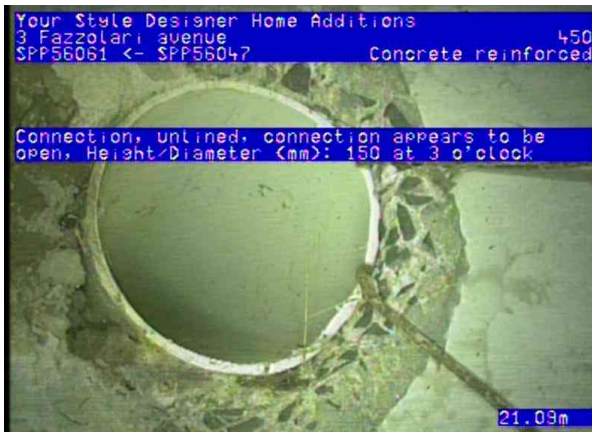
Suburb	Address/Location	Date of inspection	Pipe Asset ID	Job ID
mona vale	3 Fazzolari avenue	17/07/2025	SPI50195	20251554



SPI50195_c4b506c8-7b9a-4194-82fb-1adf6b650383_20250717_074417_076.jpg, 00:05:48, 16.76
Connection, unlined, connection appears to be open, Height/Diameter (mm): 150 at 10 o'clock



SPI50195_8f4c3fff-8801-47bd-8c30-f33521e3bfe9_20250717_074531_593.jpg, 00:06:56, 19.55
Tap roots, reduction in cross sectional area, Obstruction: 10%, at joint at 4 o'clock



SPI50195_c25cf139-651f-40a0-9c57-ffc22386b16_20250717_074618_146.jpg, 00:07:33, 21.09
Connection, unlined, connection appears to be open, Height/Diameter (mm): 150 at 3 o'clock



SPI50195_c70b843b-77fa-43cd-9401-9ed1842afa41_20250717_074627_748.jpg, 00:07:38, 21.09
The damage has extended sufficiently for several pieces of large aggregate at 3 o'clock



Section Pictures - 17/07/2025 - SPI50195

Suburb	Address/Location	Date of inspection	Pipe Asset ID	Job ID
mona vale	3 Fazzolari avenue	17/07/2025	SPI50195	20251554



SPI50195_65d6a7c9-8581-4621-866b-a4aafc08ee69_20250717_074728_528.jpg, 00:08:33, 22.73
Connection, unlined, connection appears to be open, Height/Diameter (mm): 150 at 10 o'clock



SPI50195_beee9a99-f10a-408c-acf3-afc77d3260c9_20250717_074817_159.jpg, 00:08:58, 24.05
General comment / Approx location of boundary



SPI50195_a12b57b7-9d0c-472e-825b-0966ac886c06_20250717_074858_918.jpg, 00:09:33, 24.74
Connection, unlined, connection appears to be open, Height/Diameter (mm): 150 at 12 o'clock

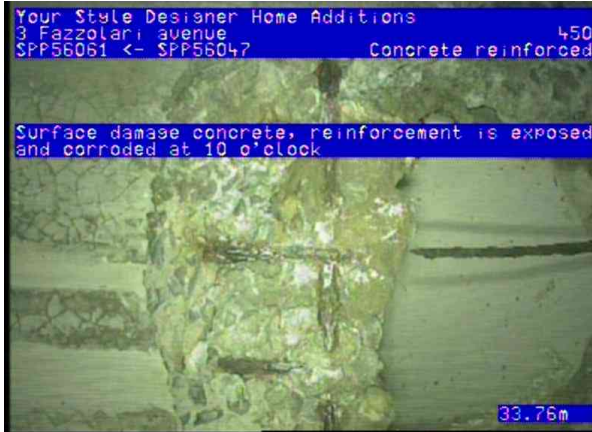


SPI50195_c57dc26f-6edf-4e3e-98ea-b8fa7592980f_20250717_075156_214.jpg, 00:12:24, 33.76
Connection, unlined, connection appears to be open, Height/Diameter (mm): 150 at 10 o'clock



Section Pictures - 17/07/2025 - SPI50195

Suburb	Address/Location	Date of inspection	Pipe Asset ID	Job ID
mona vale	3 Fazzolari avenue	17/07/2025	SPI50195	20251554



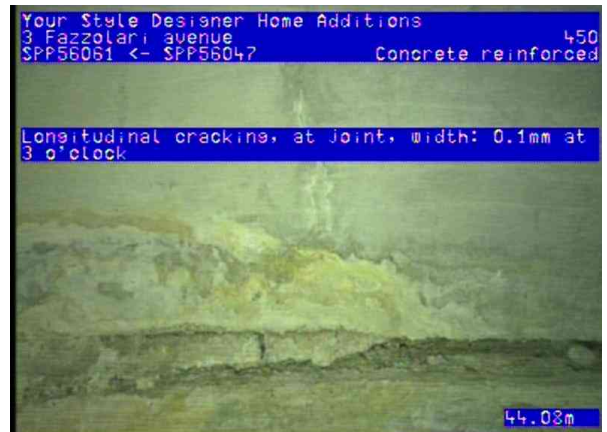
SPI50195_9dd911e3-e750-4b59-a15a-1e90ae8a19de_20250717_075208_390.jpg, 00:12:31, 33.76
Surface damage concrete, reinforcement is exposed and corroded at 10 o'clock



SPI50195_8ea5d1ed-199d-4735-98f3-bb28d7dcec5a_20250717_075256_013.jpg, 00:13:13, 34.47
Connection, unlined, connection appears to be open, Height/Diameter (mm): 150 at 10 o'clock



SPI50195_ee54ead3-a01f-40a8-bc6d-e162712ebe54_20250717_075503_204.jpg, 00:15:15, 41.52
The conduit curves to the left



SPI50195_6251ddc9-0100-437a-ad25-351bb763ffa3_20250717_075616_093.jpg, 00:16:22, 44.08
Longitudinal cracking, at joint, width: 0.1mm at 3 o'clock

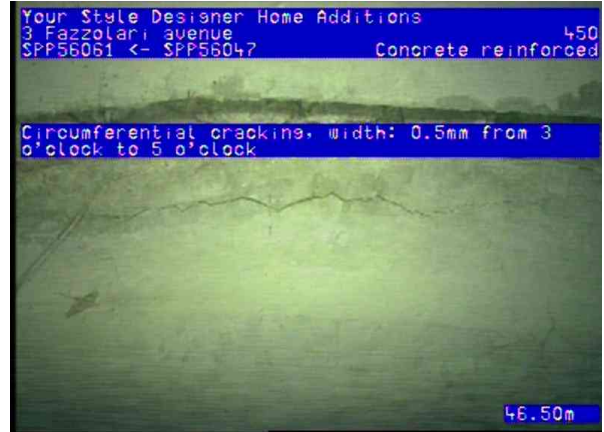


Section Pictures - 17/07/2025 - SPI50195

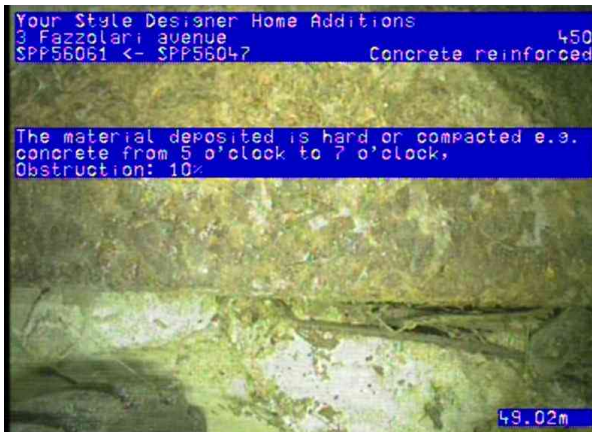
Suburb	Address/Location	Date of inspection	Pipe Asset ID	Job ID
mona vale	3 Fazzolari avenue	17/07/2025	SPI50195	20251554



SPI50195_2649fa71-106a-47f7-971c-913f5edb0f2f_20250717_075637_532.jpg, 00:16:39, 44.08
Longitudinal cracking, at joint, width: 0.1mm at 10 o'clock



SPI50195_95d6b962-df2b-4011-81a4-0d7730b077f3_20250717_075737_545.jpg, 00:17:29, 46.50
Circumferential cracking, width: 0.5mm from 3 o'clock to 5 o'clock



SPI50195_3a4345c3-ecdb-46d9-ac8e-912809074003_20250717_075841_976.jpg, 00:18:24, 49.02
The material deposited is hard or compacted e.g. concrete from 5 o'clock to 7 o'clock, Obstruction: 10%